

封面W:135mm

封面H:95mm



Smart KM-8100 Wireless SMART Keyboard & Mouse



Quick Guide
Copyright© 2018 KYE SYSTEMS CORP.



KYE Systems Corp.
#492, Sec. 5, Chongxin Rd., Sanchong Dist.,
New Taipei City 24160, Taiwan
Tel: 886-2-2995-6645
Fax: 886-2-2995-6649
Email:sim@geniusnet.com.tw
Email:csd@geniusnet.com.tw (Tech. Support)
http://www.geniusnet.com

KYE Systems America Corp. (Miami)
2090 NW 133 Avenue, Unit 2, FL 33182, USA
Tel: 1-305-468-9250
Tel: 1-305-468-9250-16 (Tech. Support)
Fax: 1-305-468-9251
Email:support@genius-kye.com
http://www.geniusnet.com

KYE International Corp. (USA & Canada)
12675 Colony Street, Chino, CA 91710, USA
Tel: 1-626-226-2678
Tel: 1-800-756-4115 (Toll Free Line)
Fax: 1-626-226-2679
http://www.geniususeta.com
http://www.geniushop.com

KYE Systems Europe GmbH.
Karl-Benz-Straße 9, D-40764 Langenfeld, Germany
Tel: 49-2173-9743-0
Tel: 49-2173-9743-21 (Tech. Support)
Fax: 49-2173-9743-17
Email:genius@genius-europe.com
http://www.genius-europe.com

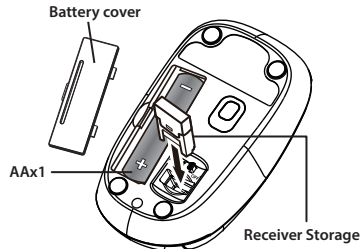
Dongguan Gaoying Computer Products Co., Ltd.
Biaodun Industrial District, Houjie Town,
Dongguan City,
Guangdong Province, 523961 China
Tel: 0769-85889876
Tel: 400697755 (Tech. Support)
Fax: 0769-85990089
http://cn.geniusnet.com



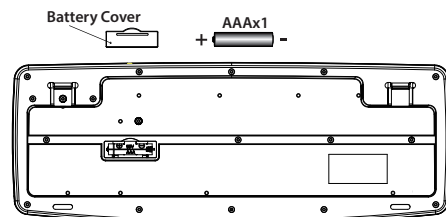
12030023400-A

Figure

**1 Remove the battery cover from the mouse.
Install one AA battery into the mouse.**



**2 Remove the battery cover from the keyboard.
Install one AAA battery into the keyboard.**



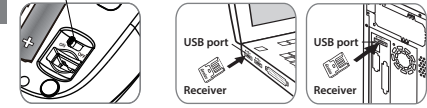
Replace Batteries

If the mouse or keyboard does not work properly, then the batteries have lost their charge, so you need to replace them.
Warning: do not mix or use different types of batteries at the same time.

Notes on Battery Usage

When you use the battery, carefully read and strictly observe the Safety Instructions and the notes described below:
• Different battery types and surrounding temperatures may affect the battery performance.
• Avoid using batteries in extremely cold environments as low temperatures can shorten the battery life and reduce wireless device performance.
• If you are using a new rechargeable battery or rechargeable battery that has not been used for an extended period of time (batteries that pass the expiry date are exceptions) it might affect the period of time according to local regulations. you can use this device. Therefore, to maximize their performance and lifetime, we recommend that you fully charge the batteries and discharge them for at least one complete cycle before use.
• The battery or wireless device may feel warm when using for an extended period of time. This is normal and not a malfunction.
• If you will not be using the batteries for an extended period of time, remove them from the wireless device to prevent leakage or corrosion.
• Always keep the terminals in a clean state.
• Risk of explosion if battery is replaced by an incorrect type.
• Dispose of used batteries according to local regulations.

3 Open the power switch Plug the receiver into your computer



Connect both devices, wait 5-10 seconds and you are ready to begin



1 2 3 Mouse Button Assignments

- 1. Left Button:** Provides traditional mouse functions like click, double click and drag.
- 2. Magic-Roller:** Scroll the button to surf the Internet and Windows documents.
- 3. Right Button:** Provides traditional mouse right click function

Symbol for Separate Collection in European Countries
This symbol indicates that this product is to be collected separately.
The following apply only to users in European countries:
• This product is designated for separate collection at an appropriate collection point.
• Do not dispose of as household waste.
• For more information, contact the retailer or the local authorities in charge of waste management.



Symbol für Mülltrennung in der Europäischen Union
Dieses Symbol bedeutet, dass dieses Produkt separat entsorgt werden muss.
Folgendes gilt nur für Benutzer in der Europäischen Union:
• Dieses Produkt muss an einem geeigneten Sammelplatz angeliefert werden.
• Entsorgen Sie das Produkt nicht im Hausmüll.
• Weitere Informationen erhalten Sie von Ihrem Einzelhändler oder von der für Entsorgung zuständigen Behörde.

Symbole de collecte séparée dans les pays européens
Ce symbole indique que ce produit doit faire l'objet d'une collecte séparée.
Ce qui suit ne s'applique qu'aux utilisateurs résidant dans les pays européens :
• Ce produit a été conçu afin de faire l'objet d'une collecte séparée dans un centre de tri adéquat.
• Ne vous débarrassez pas de ce produit avec vos ordures ménagères.
• Pour plus d'informations, contactez votre revendeur ou le service assurant l'élimination des déchets.

Simbolo per la raccolta differenziata nei paesi europei
Il simbolo indica che questo prodotto si può raccogliere separatamente.
Quanto segue si applica soltanto agli utenti dei paesi europei:
• Questo prodotto è stato progettato per la raccolta differenziata presso un punto di raccolta appropriato. Non gettarlo insieme ai rifiuti di casa.
• Per maggiori informazioni, rivolgersi al rivenditore o all'autorità locale responsabile della gestione dei rifiuti.

Simbolo de recogida selectiva en países europeos
Este símbolo indica que este producto debe eliminarse por separado.
Las cláusulas siguientes se aplican únicamente a los usuarios de países europeos:
• Este producto debe recogerse separadamente en un punto de recogida adecuado.
• No elimine este producto con la basura normal.
• Para más información, póngase en contacto con el vendedor o las autoridades locales encargadas de la gestión de residuos.

Simbolo para a recolha separada em países da Europa
Este símbolo indica que este produto tem de ser recolhido separadamente.
Os seguintes pontos aplicam-se somente a utilizadores de países europeus:
• Este produto está designado para a recolha separada num ponto de recolha apropriado.
• Não elimine este produto como lixo doméstico.
• Para mais informações contacte o vendedor ou as autoridades locais responsáveis pela gestão do lixo.

Symbol voor gescheiden afvalophaling in Europese landen
Dit symbool geeft aan dat dit product afzonderlijk moet worden opgehaald.
Het volgende geldt alleen voor inwoners van Europese landen:
• Dit product werd ontworpen voor gescheiden inzameling op een geschikt inzamelingspunt.
• Het hoort niet bij het huishoudelijk afval.
• Neem voor meer informatie contact op met de verkoper of de plaatselijke overheid, belast met het afvalbeheer.

Symbol pro třídění odpadu v evropských zemích
Tento symbol označuje, že tento výrobek je třeba zlikvidovat jako tříděný odpad.
Následující se týká pouze uživatelů v evropských zemích:
• Tento výrobek je třeba zlikvidovat jako tříděný odpad v příslušné sběrně.
• Nelikvidujte s běžným komunálním odpadem.
• Další informace vám poskytne prodejce nebo místní orgány zodpovědné za likvidaci odpadu.

Az elkülönített hulladék-elhelyezésre figyelmeztető szimbólum az európai országokban
A szimbólum arra figyelmeztet, hogy a terméket külön hulladéklerakóban kell gyűjteni.
A következő figyelmeztetés kizárólag az európai felhasználókra vonatkozik:
• A terméket az elkülönített hulladékgyűjtési felületre véve el kell juttatni.
• További információkat vegye fel a kapcsolattartó vagy a helyi hulladékgazdálkodásért felelős hatósággal.

Symbol zbiórki selektywnej w krajach europejskich
Symbol ten wskazuje, że produkt powinien być zbierany selektywnie.
Poniższe uwagi dotyczą wyłącznie użytkowników w krajach europejskich:
• Ten produkt jest przeznaczony do zbiórki selektywnej w odpowiednim punkcie zbiórki.
• Nie należy pozbywać się go razem z odpadami gospodarskimi domowymi.
• W celu uzyskania dalszych informacji należy skontaktować się ze sprzedawcą lub z miejscowymi władzami odpowiedzialnymi za gospodarkę odpadami.

Σύμβολο για χωριστή περισυλλογή στις ευρωπαϊκές χώρες
Το σύμβολο αυτό υποδηλώνει ότι το συγκεκριμένο προϊόν πρέπει να περισυλλέγεται χωριστά.
Το ακόλουθο ισχύει μόνο για χρήστες σε ευρωπαϊκές χώρες:
• Το προϊόν προορίζεται για χωριστή περισυλλογή σε κάποιο ενδεδειγμένο σημείο αποκομιδής απορριμμάτων. Μην το απορρίπτετε ως κοινό οικιακό απόβλητο.
• Για περισσότερες πληροφορίες, επικοινωνήστε με το κατάστημα λιανικής που σας προμήθευσε το προϊόν ή με τις αρχές που είναι αρμόδιες για τη διαχείριση απορριμμάτων.

Ayn birtkirlime için Avrupa Dikelerindeki kullanıcılar için geçerlidir.
Bu simvol bu ürünün ayrı toplaması gerektiğini göstermektedir.
Aşağıdaki bilgiler sadece Avrupa ülkelerindeki kullanıcılar için geçerlidir.
• Bu ürün ayrı bir noktada toplanmak üzere tasarlanmıştır. Ev çöpi olarak atmayın.
• Daha fazla bilgi için tedariçinizi veya bölgenizdeki çöp toplama otoritesine başvurun.

Sümböl eraldi kogumiseks Euroopa maaades
See sümbol näitab, et seda toodet tuleb koguda eraldi.
Alljärgnevalt kehtib ainult kasutajatele Euroopa maaades:
• Seda toodet tuleb kasutada eraldi vastavas kogumispunktis. Ärge likvideerige seda kui omapäkki.
• Kui teil on vaja enam teavet, võtke ühendust äärmjuhiga või kohaliku autoriteediga, kes on vastutav jäätmekorralduse teemadega eest.

Atseviškas atkritumu savākšanas simbols Eiropas valstīs
Šāds simbols norāda, ka izstrādājums ir jānosūta no citiem atkritumiem.
Šie norādījumi attiecas tikai uz iedzīvotājiem Eiropas valstīs:
• Izstrādājumu paratdzies savākt atsevišķi no citiem atkritumiem tam piemērotā savākšanas vietā. To nedrīkst izveikt kopā ar sadzīves atkritumiem.
• Lai iegūtu papildu informāciju, sazinieties ar mazumtirdzniecības vai vietējām institūcijām, kas atbild par atkritumu apsaimniekošanu.

Simbóla atskiram atlieku izmetimui i valstīs Eiropas šalys
Šis simbóls norāda, ka šis produkts turi būt izmetams atskiram.
Sekanti informācija ietver tikai Eiropas šalys iedzīvotājiem:
• Šis produkts savukārt atskiram izmetimui tam tikrām atlieku sūrināmo taške. Neišmesiet kopā ar citiem atkritumiem.
• Lai ņemtu vērā papildu informāciju, sazinieties ar mazumtirdzniecības vai vietējām institūcijām, kas atbild par atkritumu apsaimniekošanu.

Federal Communication Commission interference statement:
This equipment has been tested and found to comply with the limits of a Class B digital device, pursuant to Part 15 of the FCC Rules. These limits are designed to provide reasonable protection against harmful interference in a residential installation.
This equipment generates uses, and can radiate radio frequency energy and, if not installed and used in accordance with the instructions, may cause harmful interference to radio communications. However, there is no guarantee that interference will not occur in particular installations. If this equipment does cause harmful interference to radio or television reception, which can be determined by turning the equipment off and on, the user is encouraged to try to correct the interference by one or more of the following measures:
Rerorient / Relocate the receiving antenna.
Increase the separation between the equipment and receiver.
Connect the equipment into an outlet on a circuit different from that to which the receiver is connected.
Consult the dealer or an experienced radio / TV technician for help.
FCC CAUTION: Changes or modifications not expressly approved by the manufacturer responsible for compliance could void the user's authority to operate the equipment.
This device complies with Part 15 of the FCC Rules. Operation is subject to the following two conditions:
(1) this device may not cause harmful interference, and
(2) this device must accept any interference received, including interference that may cause undesired operation.

RF exposure warning: The equipment complies with RF exposure limits set forth for an uncontrolled environment. The antenna(s) used for this transmitter must not be co-located or operating in conjunction with any other antenna or transmitter.
You are cautioned that changes or modifications not expressly approved by the party responsible for compliance could void your authority to operate the equipment.

Disclaimer: The following does not apply to any country where such provisions are inconsistent with local law: KYE Systems Corp. makes no warranties with respect to this documentation, whether expressed or implied. All material is provided "as is". This includes, but is not limited to, any implied warranties of merchantability and fitness is for a particular purpose. The information covered in this document is subject to change without notice.
KYE Systems Corp. assumes no responsibility for any errors that may appear in this document. All brand names mentioned in this manual are trademarks or registered trademarks of their respective owners.
Copyright © 2017 KYE Systems Corp. All rights reserved.

Federal Komünikasyon Komisyonu Bildirgesi
Bu ürün FCC Kurallarının 15-inci Kısmıyla uyumludur. Ürünün kullanım şartı eden 2 parça bağıdır (1) bu ürünün kullanımında herhangi bir zarar görmediğimiz, ve (2) bu ürün kablosuz iletişiminde kaynaklanan diğer bir cihazdan parazitiz olabilir, parazitlerden operasyonel hatalar görülebilir. Bu cihaz test edilmiş ve FCC Kurallarının Part 15. Kısmının B limitleriyle uyumlu bulunmuştur. Bu limitler kullanımı ve kurulumu esnasında oluşabilecek zararı parazitlerden korunma amacıyla tasarlanmıştır.
Bu cihaz radio frekansı sinyalleri yayır, talimatlarına göre kurulmadığı takdirde radio iletişim sistemine zararı parazitler oluşturabilir. Parazitlerin oluşmaması için aşağıdaki bir garanti olmalıdır: 1. Cihazın yerini değiştirin / antenini yerini değiştirin. 2. Cihaz ve alıcısı arasında ki mesafeyi artırın. 3. Cihazı alıcının bağlı olduğu fişten bir noktadan bağlayın. 4. Tedarikçinizden veya radyo / TV teknisyenlerinden yardım alınuz.
DİKKAT: Üretici tarafından uyumuluğu aykırı yapılan değişiklikler veya modifikasyonlar ürünü garanti dışı bırakır.

Disclaimer
Yükarıda belirtilenler bu standartlara uymayan ve bu kanunlara uymayan ülkeler için geçerli değildir. KYE Systems Corp. Şirketin bu evrığa dayanarak verdiği veya verebileceği herhangi bir garanti yoktur.

Yükarıdaki materyeller "eğer" diye sunulan materyellerdir.
KYE Systems Corp., şirket yukarıdaki bilgilerden mesul , veya garanti veren olarak sayılmaz. Bu belgedeki her hak ve sorumluluğu devletir. KYE Systems Corp. Şirketin bu dokümanındaki herhangi bir hatadan dolayı sorumlu değildir. Adı geçen markalar şirketlerinde tescilli edilmiş markalardır.
© 2017 KYE Systems Corp., Tüm hakları saklıdır.

KYE SYSTEMS CORP.
#492, Sec. 5, Chongxin Rd., Sanchong Dist.,
New Taipei City 24160, Taiwan

Ricky Chen
Ricky Chen
QADV Department
KYE SYSTEMS CORP.



FCC ID: FSUGM2LM
RATING: DC 5V --- 100mA(Max)
MADE IN CHINA
www.geniusnet.com
KYE Systems Corp.

The frequency band of product is 2400 MHz - 2483.5 MHz and the radio-frequency transmitted maximum power (equivalent isotropic radiated power, EIRP) less than 10 mW.

Product storage conditions: Temperature: -20°C - 50°C / Humidity: 5% - 85%