

FCC ID: FSUGMZFY

EUT: MOUSE

KYE SYSTEMS CORP.

USER'S MANUAL

FEDERAL COMMUNICATIONS COMMISSION

This device complies with Part 15 of the FCC Rules. Operation is subject to the following two conditions: (1) this device may not cause harmful interference, and (2) this device must accept any interference received, including interference that may cause undesired operation.

NOTE

This equipment has been tested and found to comply with the limits for a Class B digital device, pursuant to Part 15 of the FCC Rules. These limits are designed to provide reasonable protection. This equipment generates, uses and can radiated radio frequency energy and, if not installed and used in accordance with the instructions, may cause harmful interference to radio communications. However, there is no guarantee that interference will not occur in a particular installation. If this equipment does cause harmful interference to radio or television reception, which can be determined by turning the equipment off and on, the user is encouraged to try to correct the interference by one or more of the following measures:

- Reorient or relocate the receiving antenna.
- Increase the separation between the equipment and receiver.
- Connect the equipment into an outlet on a circuit different from that to which the receiver is connected.
- Consult the dealer or an experienced radio/TV technician for help.

Shielded interface cables must be used in order to comply with emission limits.

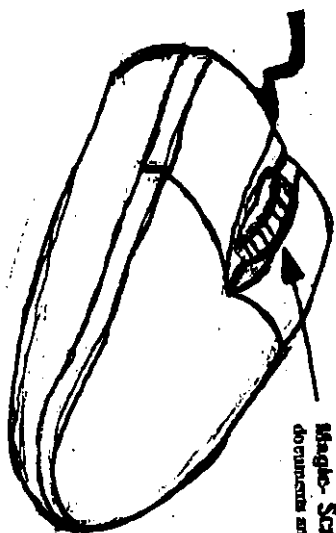
Changes or modifications not expressly approved by the party responsible for compliance could void the user's authority to operate the equipment.

Introduction	1
Getting Started	2
a. System Requirements	2
Installing Netscroll	2
Installing the Netscroll Software	4
Using Netscroll with Windows	4
Button and Magic-Scroll Functions	4
Factory Settings	4
What's New About Scrolling	4
Vertical Scrolling	5
Horizontal Scrolling	5
Customizing Netscroll	6
Special Functions	6
Using Netscroll in Windows 3.x	7
Uninstalling Netscroll	7
Troubleshooting	7
Cleaning the Genius Netscroll	8

Introduction

Netscroll is the pointing device that lets you move through windows and the Internet with amazing speed and flexibility. **Netscroll** is a professional tool that makes Windows easy to use.

Features



Magic-Scroll to scroll windows, documents and the Internet easily.

- Scroll through windows and the Internet without using the scrollbars
- Button-find, mouse trails, and big cursor options
- Simplifies Windows operations
- Pre-configured to support most popular applications
- Easy-to-use Status Panel and Setup window
- Right or left hand use
- For all Microsoft® Windows-compatible applications

Scrolling Features

Netscroll's powerful scrolling features let you quickly scroll through windows, the Internet, documents, lists and menus. **Netscroll** executes scrollbar functions without moving the cursor and clicking or dragging. Simply press the **Magic-Scroll** in the direction you want to scroll. **Netscroll** can be set to scroll line-by-line, vertically or horizontally, and execute the same functions as clicking the scrollbar arrows or the keyboard cursor movement keys. These functions can be assigned to the **Magic-Scroll** or the **Netscroll** buttons.

Getting Started

After you have installed Netscroll to your computer, install the Netscroll software. Use the Netscroll buttons and the Magic-Scroll, and scroll through the windows and dialog box lists.

Requirements

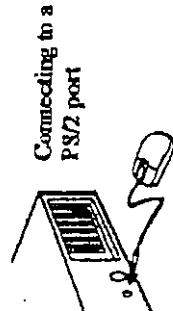
486, Pentium or compatible computer
Microsoft Windows 3.1, Windows 95. However, Windows NT is not supported at this time.
2 port (or you can connect the a 6-pin to 9-pin adapter to a serial port)
3.5-inch disk drive
Hard drive recommended

Installing Netscroll

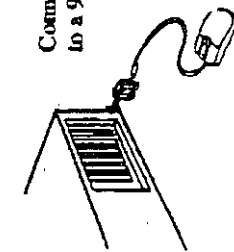
Installing Netscroll is very simple and will take only a few minutes.

Connecting Netscroll to Your Computer

If the power to your computer, have another mouse installed on your computer, disconnect it. Connect Netscroll to a PS/2 port on the back of your computer. If you have the serial and mouse model, you can connect a 6-9 pin adapter to a 9-pin serial port.



Connecting to a PS/2 port



Connecting a 6-9 pin adapter to a 9-pin serial port

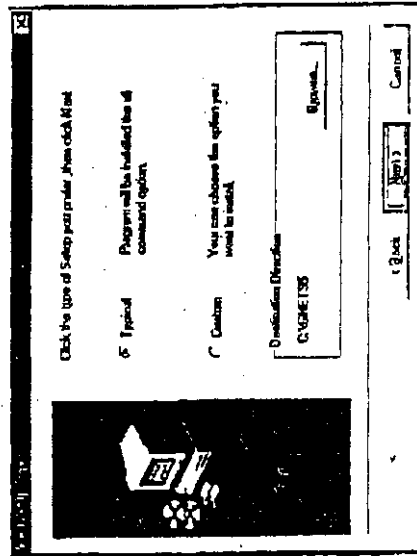
Make sure the power is ON.

Installing the Netscroll Software

The following procedure installs the Netscroll software so you can use Netscroll functions in Windows or DOS.
1. Insert the Netscroll software diskette into drive A or B.

2. For Windows 95, choose the "Start" menu (Ctrl & Esc). For Windows 3.1, in the Program Manager, choose "File" (Alt & F).
3. Select "Run".
4. Type A:SETUP (or B:SETUP) in the command line box and press Enter to select OK.
5. Follow the directions on the screen to install the software. You can choose one of type of Setup you want to install the Genius Netscroll on your hard disk (we recommend you select "Typical").

If you select the "Custom" button, you must select different components (Windows or DOS driver) to complete the installation.

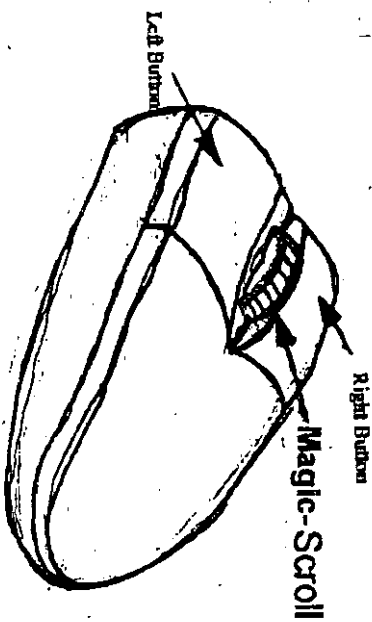


6. When installation is complete, the standard option is to restart your computer.
7. Netscroll is now active and the cursor will move when you move Netscroll. During installation, Netscroll inserts a load command into the WIN.INI file. This command loads Netscroll: each time Windows is started. The Netscroll software controls the Netscroll buttons and Magic-Scroll. If the Netscroll software isn't loaded, Netscroll functions as a traditional mouse.
 - » *NOTE: The mouse tracking speed, double-click speed, left or right hand operation, and mouse trails settings previously selected in the Mouse Control Panel are automatically used by the Netscroll software.*
 - » *In Windows 95, depending on the mouse driver installed prior to Netscroll the mouse speed, double-click speed, and left-hand settings may not be retained after Netscroll is installed. Just use the Netscroll setup panel to make the desired settings, then press the OK button to save them for all applications.*

Using Netscroll with Windows

We will now give you some hands-on practice to acquaint you with Netscroll's many time-saving features when working in Windows. This chapter describes the factory settings.

Button and Magic-Scroll Functions



Factory Settings

Magic-Scroll Scrolls up or down through the active window or list.

Left Button Provides traditional mouse functions such as click, double-click and drag.

Right Button Provides standard right button functions in applications that utilize the right button.

Netscroll has the capability of using different button and Magic-Scroll settings for applications.

What's New About Scrolling

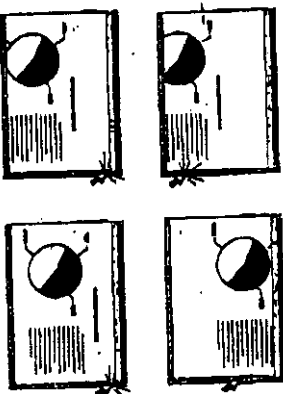
The Netscroll **Magic-Scroll** simplifies scrolling any window that has scrollbars - you no longer have to click and drag within the confines of the narrow scrollbars. Simply click the Netscroll **Magic-Scroll** to scroll through the active window or menu.

Vertical Scrolling

The old way is too slow and tedious while the Netscroll way is fast and easy.

The Old Way . . .

It usually takes multiple clicks and drags to move to the portion of the document that you want to use in the window.



The Netscroll Way . . .

Simply press the **Magic-Scroll** in the direction that you want to scroll.



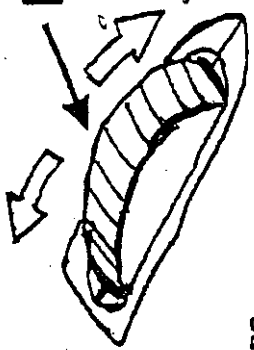
» *NOTE: You don't need to activate a window in order to use the scrolling features.*

Horizontal Scrolling

Move the cursor over the horizontal scroll bar and press the magic button.

Customizing Netscroll Mouse

This chapter shows you how to customize the Netscroll for Windows applications. Using Netscroll in Windows 95
In Windows 95, there are four basic folders for the Genius Netscroll software. You can set each function in the Control Panel.

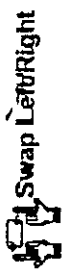


Magic-scroll

Basic Functions

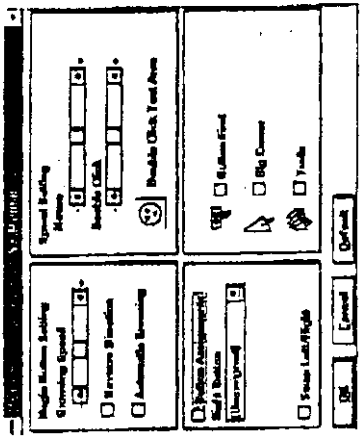
- Browsing Speed** Adjust the browsing speed of the document.
- Browsing Direction** Changes the default browsing direction to the opposite direction. You can turn the automatic browsing function on or use it manually.
- Automatic Browsing** Automatically positions the cursor on the default button, usually the OK button, when a dialog box opens.
- Button Find** Determines the mouse speed and double-click speed. This is the best area for testing the double-click performance.
- Speed Setting** Sets the speed of double click.
- Double Click**

- Big Cursor** Changes the shape of the system cursor. Applications that use their own custom cursor will override this function.
- Trails** This option makes it easier to find the cursor when using an LCD monitor. This option cannot be used if your monitor does not support it.



Using Netscroll in Windows 3.x

Because of limitations to the operating system, the function of Netscroll is different from that of Windows 95.



Magic-Button Setting

You can adjust the browsing speed as you like. Or click on the Reverse Direction/Automatic Browsing function.

Button Assignments

Allows you to define the right mouse function as described. Or you can swap the left button and right button if you are a left-hand user.

Uninstalling Netscroll Mouse

Follow the instructions below to remove the Genius Netscroll software from your hard disk. In Windows 95, click on the Start button, select Programs and move to Netscroll. Then click on Uninstall Netscroll.

or
In Windows 3.x, select Uninstall Netscroll in the Genius Netscroll group.

Troubleshooting

Why can't my Netscroll use the Magic-Scroll function after I installed the driver under Windows 95?

1. Make sure Netscroll is properly connected.
 2. Make sure there are no other driver conflicts in Windows 95. You can check this by:
 - A. Open the "Control Panel" from "My Computer".
 - B. Run "System" icon, and select the "Device Manager" folder.
 - C. Point to item list under the "Mouse" icon.
 - D. Press the "Remove" button to remove the other Mouse Driver.
 - E. Re-install the Netscroll driver.
- Q. How can I use the Magic-Scroll under DOS?
- A. The NetMouse Magic-Scroll is a special design for Windows browsing so there is no function under DOS.

Helpful Solutions

- Q. When I select True Color in the Display Mode in Windows, the function of Netscroll seems strange. Why is this?
- A. Please select Hi-Color mode to eliminate this condition.
 - B. Because True Color Mode will waste a lot of time for the display card to transfer data to the CPU. This causes the function of Auto-Browsing and Speed Control not to work properly.
- Q. Why can't I use the Magic-Scroll function in Windows NT?
- A. The Magic-Scroll function of Netscroll only works in Windows 3.X and Windows 95 at present. The software for Windows NT is being developed and will be available later this year.

Cleaning the Genius Netscroll

1. Turn your computer off and turn you mouse upside down.
2. Remove the ball cover and remove the mouse ball.
3. Occasionally, the ball compartment may collect dust or dirt to make the Netscroll work improperly. Inside the ball area, clean the two rollers with your fingers or with a tissue.
4. Put the ball back into the ball area, and lock the ball cover.