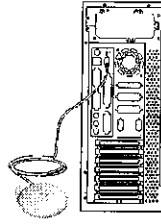
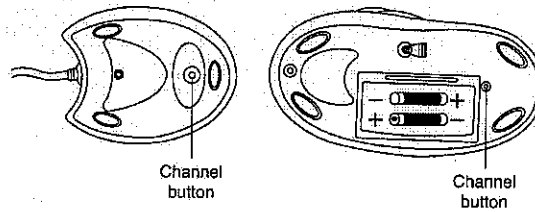

Hardware Installation

Note: Always turn off your computer before you connect or disconnect your mouse unless you're using a USB device in Win98 or above. If you have a PC with the PC 99 spec, then the mouse port is green.

1. You can connect the receiver to either a USB or PS/2 port.



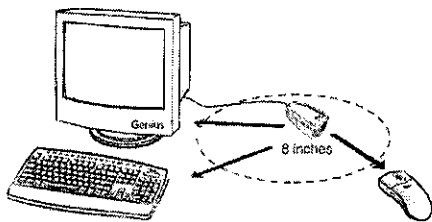
2. If you have a PS/2 mouse port and you are using the USB-PS/2 model, then you need to use the 6-pin PS/2 adapter.



3. Install two AA batteries in the mouse.
4. Turn on your computer.
5. After you open Windows, please press the button under the receiver first and then press the button under the mouse for channel setting. *Make sure each button press is for at least three seconds.*

Warning:

1. Please do not use Wireless Optical Series on a desk which is made of glass, mirror, iron, or black velvet. Also, a flat surface is necessary or the Optical Sensor will error easily.
2. When you use Wireless Optical Series on a desk that is made of metal, try using a pad and reduce the receiving distance.
3. Before the first installation is completed (channel setting ready), the mouse will not work in DOS.
4. The Wireless Optical Series channel provides 256 ID-codes, and it automatically selects the ID # for your mouse. You can only set up one Wireless Optical Series at a time. But if you have additional Wireless Optical Series sets in an area of 10 square meters, more interference will occur between the receiver and your mouse.
5. If you feel the mouse does not move smooth as usual, that the batteries have lost their charge, so please replace them.
6. The Wireless Optical Series with radio frequency gives you free movement and an enjoyable experience. For optimal performance, place the receiver at least 8 inches (about 20 cm) away from the mouse and other electrical devices, such as the computer, monitor, and etc.

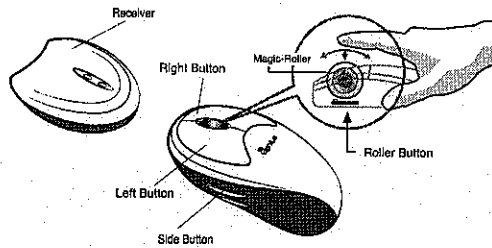


Software Installation

1. Make sure the mouse is connected to the computer.
2. Put Setup the disk (or CD) into the disk drive.
3. Follow the instructions on the screen to finish the software installation.

Factory Setting

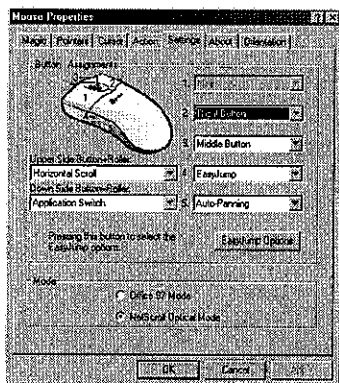
Mouse:



- Magic-Roller** Press the “Magic-Roller” to surf the Internet and Windows documents
- Left Button** Provides traditional mouse functions such as click, double click and drag.
- Right Button** You can assign this button frequently used keyboard and mouse functions in addition to features like EasyJump, Auto-Panning, Zoom, etc.
- Roller Button** You can assign this button frequently used keyboard and mouse functions in addition to features like EasyJump, Auto-Panning, Zoom, etc.
- Side Button** You can assign the following function (Application/Document, Horizontal Scroll, Last/Next Page, and Zoom in/out) to the upper or lower side button with the roller.

Button Assignments

The Button Assignment feature lets you work in a more efficient way because you can assign the most frequently used commands in Windows to the mouse buttons.



MouseMate Software Features

- Browsing Speed** You can adjust the browsing speed when you surf the Internet or Windows documents.
- Browsing Direction** Move the “Magic-Roller” forward and the screen will browse to the top of the document. Move it in reverse and the document will go in the opposite direction
- Button Find** Automatically positions the cursor on the default button, usually the OK button, when the dialog box appears on your screen.
- Trails** This option makes it easier to find the cursor when using an LCD monitor.

LIMITATION OF LIABILITY. THE WARRANTIES SET FORTH IN THIS AGREEMENT REPLACE ALL OTHER WARRANTIES. KYE EXPRESSLY DISCLAIMS ALL OTHER WARRANTIES, INCLUDING, BUT NOT LIMITED TO, THE IMPLIED WARRANTIES OF MERCHANTABILITY AND FITNESS FOR A PARTICULAR PURPOSE AND NON-INFRINGEMENT OF THIRD-PARTY RIGHTS WITH RESPECT TO THE DOCUMENTATION, SOFTWARE, AND HARDWARE. NO KYE DEALER, AGENT, OR EMPLOYEE IS AUTHORIZED TO MAKE ANY MODIFICATION, EXTENSION, OR ADDITION TO THIS WARRANTY. IN NO EVENT WILL KYE OR ITS SUPPLIERS BE LIABLE FOR ANY COSTS OF PROCUREMENT OF SUBSTITUTE PRODUCTS OR SERVICES, LOST PROFITS, LOSS OF INFORMATION OR DATA, OR ANY OTHER SPECIAL, INDIRECT, CONSEQUENTIAL, OR INCIDENTAL DAMAGES ARISING IN ANY WAY OUT OF THE SALE OF, USE OF, OR INABILITY TO USE ANY KYE PRODUCT OR SERVICE, EVEN IF KYE HAS BEEN ADVISED OF THE POSSIBILITY OF SUCH DAMAGES. IN NO CASE SHALL KYE'S LIABILITY EXCEED THE ACTUAL MONEY PAID FOR THE PRODUCTS AT ISSUE. Because some jurisdictions do not allow the limitation of implied warranties or liability for incidental, consequential, special, or indirect damages, the above limitation may not always apply. The above limitations will not apply in case of personal injury where and to the extent that applicable law requires such liability.

FCC Compliance and Advisory Statement. This hardware device complies with Part 15 of the FCC Rules. Operation is subject to the following two conditions: 1) this device may not cause harmful interference, and 2) this device must accept any interference received, including interference that may cause undesired operation. This equipment has been tested and found to comply with the limits for a Class B digital device, pursuant to Part 15 of the FCC Rules. These limits are designed to provide reasonable protection against harmful interference in a residential installation. This equipment generates, uses, and can radiate radio frequency energy and, if not installed or used in accordance with the instructions, may cause harmful interference to radio communications. However, there is no guarantee that interference will not occur in a particular installation. If this equipment does cause harmful interference to radio or television reception, which can be determined by turning the equipment off and on, the user is encouraged to try to correct the interference by one or more of the following measures: 1) reorient or relocate the receiving antenna; 2) increase the separation between the equipment and the receiver; 3) connect the equipment to an outlet on a circuit different from that to which the receiver is connected; 4) consult the dealer or an experienced radio/TV technician for help. Any changes or modifications not expressly approved by the party responsible for compliance could void the user's authority to operate the equipment. Where shielded interface cables have been provided with the product or specified additional components or accessories elsewhere defined to be used with the installation of the product, they must be used in order to ensure compliance with FCC regulations.

Canadian DOC Statement. This digital device does not exceed the Class B limits for radio noise emissions from digital apparatus specified in the interference-causing equipment standard entitled iDigital Apparatus,i ICES-003 of the Department of Communications.

Cet appareil numérique respecte les limites bruits radioélectriques applicables aux appareils numériques de Classe B prescrites dans la norme sur le matériel brouilleur: iAppareils Numériques,i NMB-003 Edictée par le Ministère des Communications.

This device complies with RSS-210 of Industry and Science Canada. Operation is subject to the following two conditions: 1) this device may not cause interference, and 2) this device must accept any interference, including interference that may cause undesired operation of the device.