

# **Bluetooth Traveler Mouse User Manual**

KYE System Corp.

# Contents

|   |           |
|---|-----------|
| <b>Welcome to Bluetooth Traveler Mouse Help Center.....</b> | <b>3</b>  |
| <b>Setup Guide.....</b>                                     | <b>3</b>  |
| <b>Setup Required.....</b>                                  | <b>3</b>  |
| <b>Setup Step.....</b>                                      | <b>4</b>  |
| <b>Find Devices .....</b>                                   | <b>7</b>  |
| <b>Auto Find Bluetooth Traveler Mouse .....</b>             | <b>7</b>  |
| <b>Find Bluetooth HID Devices.....</b>                      | <b>8</b>  |
| <b>Find Bluetooth Mouse.....</b>                            | <b>12</b> |
| <b>Getting Support .....</b>                                | <b>13</b> |
| <b>How to .....</b>   | <b>13</b> |
| <b>Troubleshooting.....</b>                                 | <b>14</b> |
| <b>Knowledge Center .....</b>                               | <b>16</b> |
| <b>Uninstall Bluetooth Traveler Mouse .....</b>             | <b>18</b> |

# Welcome to Bluetooth Traveler Mouse Help Center

The Help Center is the essential reference for customer, with much detail technical information, documentation, technical articles.

This Help Center release contains all the newest information on the Bluetooth Traveler Mouse. This documentation will guide you through setup Bluetooth Traveler Mouse.

## Setup Guide

This section describes the following topics to guide customer finishing setup procedure:

### Setup Required

To setup the Bluetooth Traveler Mouse package, you need a personal computer or notebook computer with following hardware required:

|          |  |
|----------|--|
| CPU      | PIII 800MHz  |
| RAM      | 128M   |
| KEYBOARD | Wire devices to setup the package on your computer |
| MOUSE    |  |

To setup the Bluetooth Traveler Mouse package, you also need one of the following operation system:

Windows 98 SE

Windows ME

Windows 2000

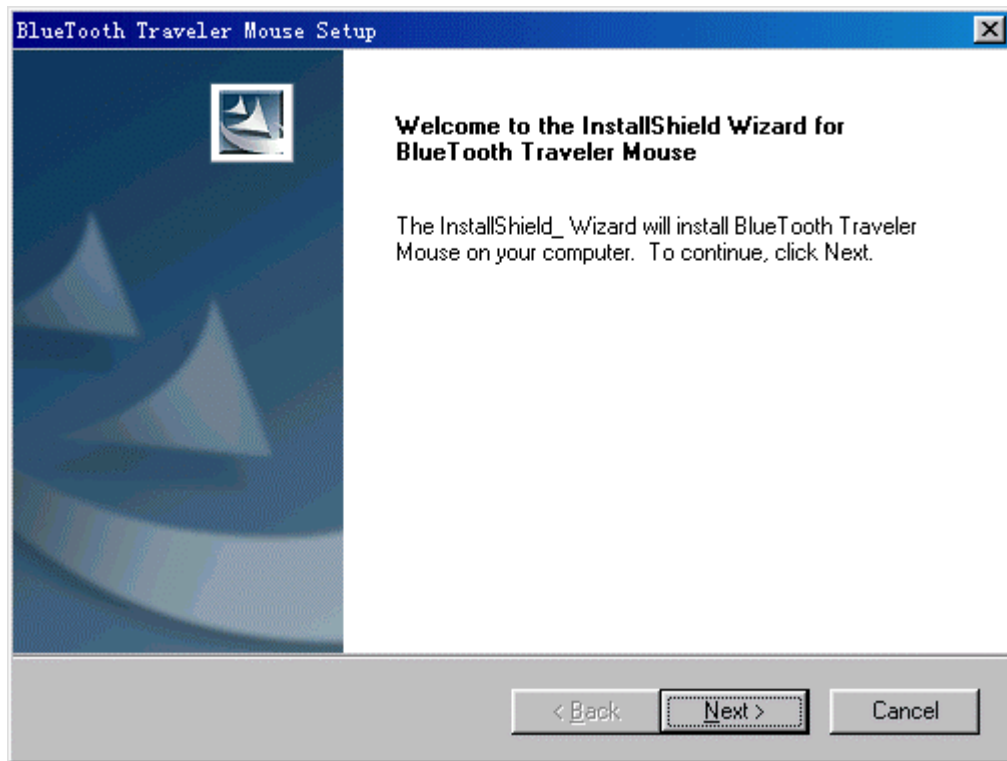
Windows XP

Windows Server 2003

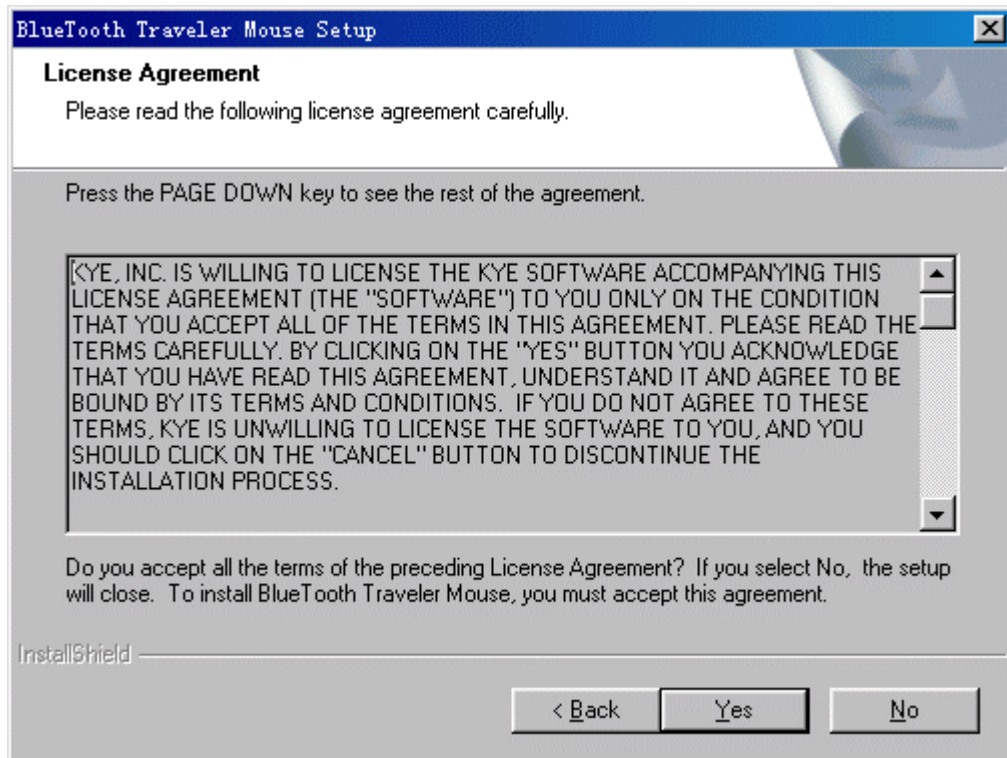
## Setup Step

To assist you in setup the package, please refer to following steps:

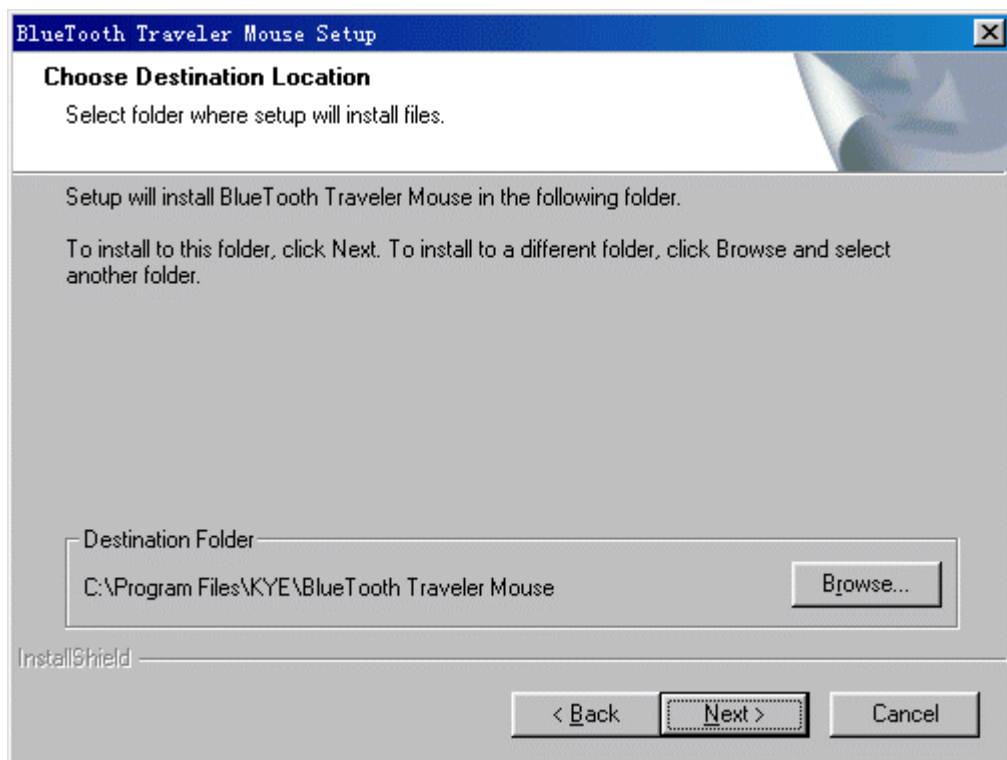
- Run Setup.exe in the Bluetooth Traveler Mouse package.  
InstallShield Wizard will help you finish the package setup.



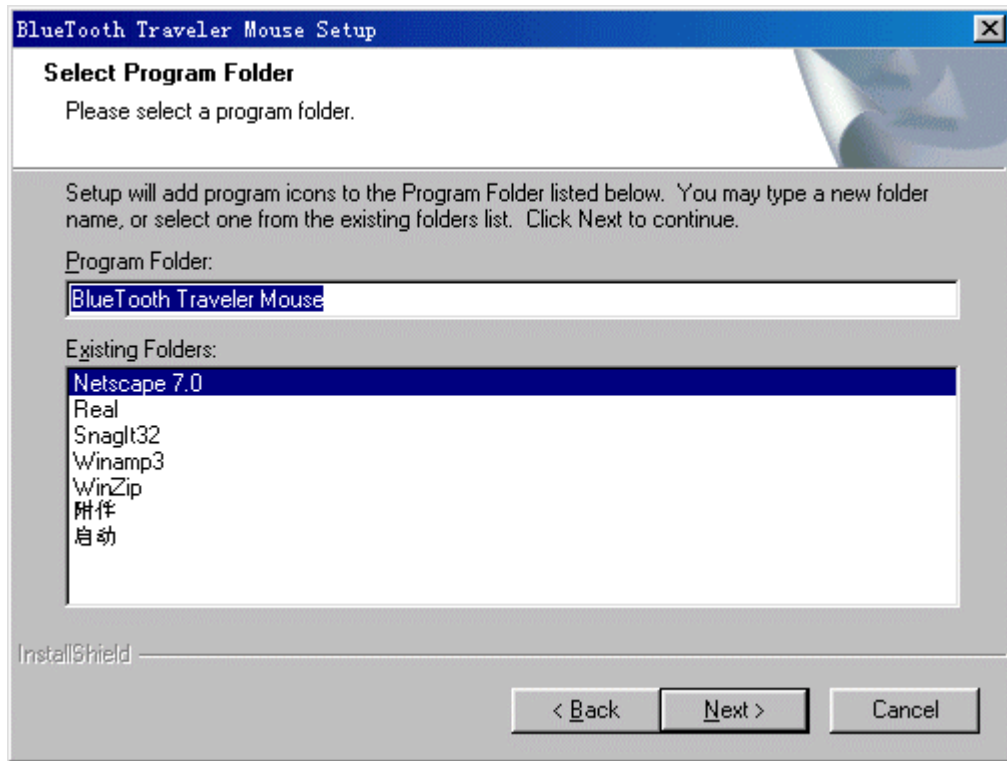
- Click 'Next' button when you already plug a bluetooth hci dongle or bluetooth hid dongle into the usb port on your computer.



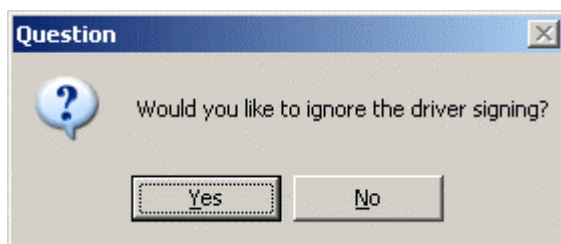
- Click 'Yes' button when you accept the license to go on.



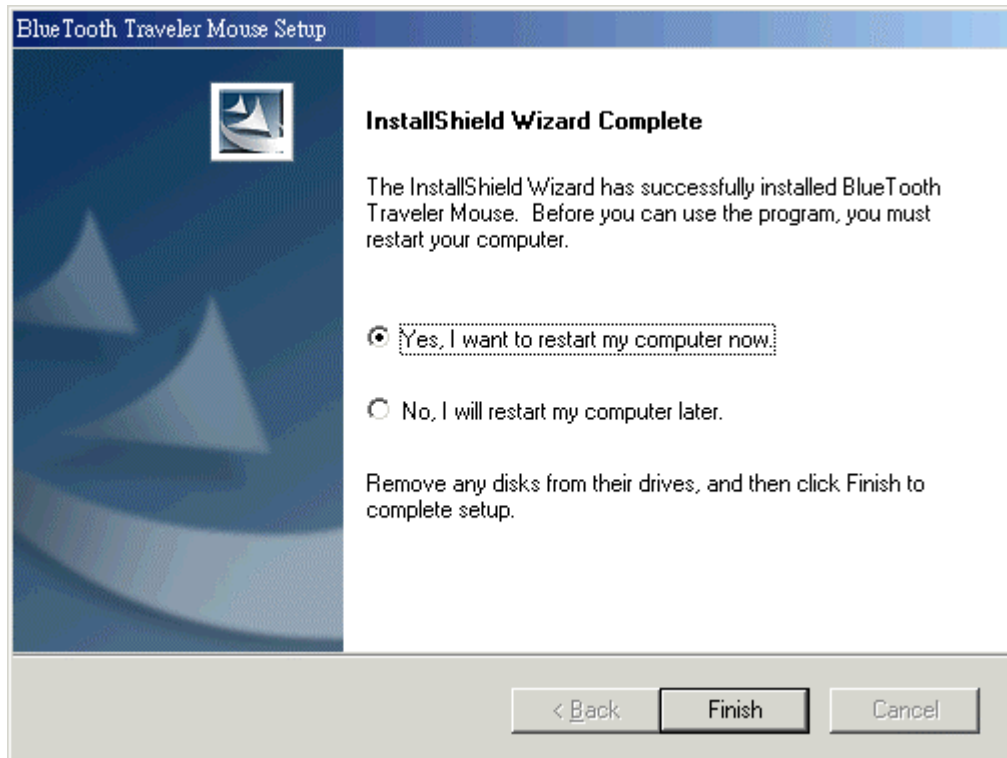
- Choose the position of the package on the computer by Click 'Browse' button, and Click 'Next' button to go on.



- Please Choose the Program Folder and then Click 'Next' button.



- Do you want to ignore the digital signing on Windows 2000 , Windows Xp or Windows Server 2003 operation system to setup the driver?
- Please refer to [Auto Find Bluetooth Traveler Mouse](#) to connect bluetooth devices



- Click 'Finish' button to finish the setup procedure.

All the package is already setup on your computer. so you will find that an icon has been added to the task bar of the operation system. Also an shortcut will be placed on the desktop. the bluetooth hid stack has been installed on your computer.

## Find Devices

This section summarizes operation setups for you to use bluetooth hid devices.

### Auto Find Bluetooth Traveler Mouse

This chapter introduce you a quickly way to connect Bluetooth Traveler Mouse. This wizard will work when no Bluetooth Traveler Mouse has been connected to system.

please refer to following steps as the picture show:

- Be sure that the Bluetooth Traveler Mouse are full power supported.
- Press the 'Connect' button on Bluetooth Traveler Mouse.
- When Bluetooth Traveler Mouse has been connected to system, the dialog wizard will disappear.



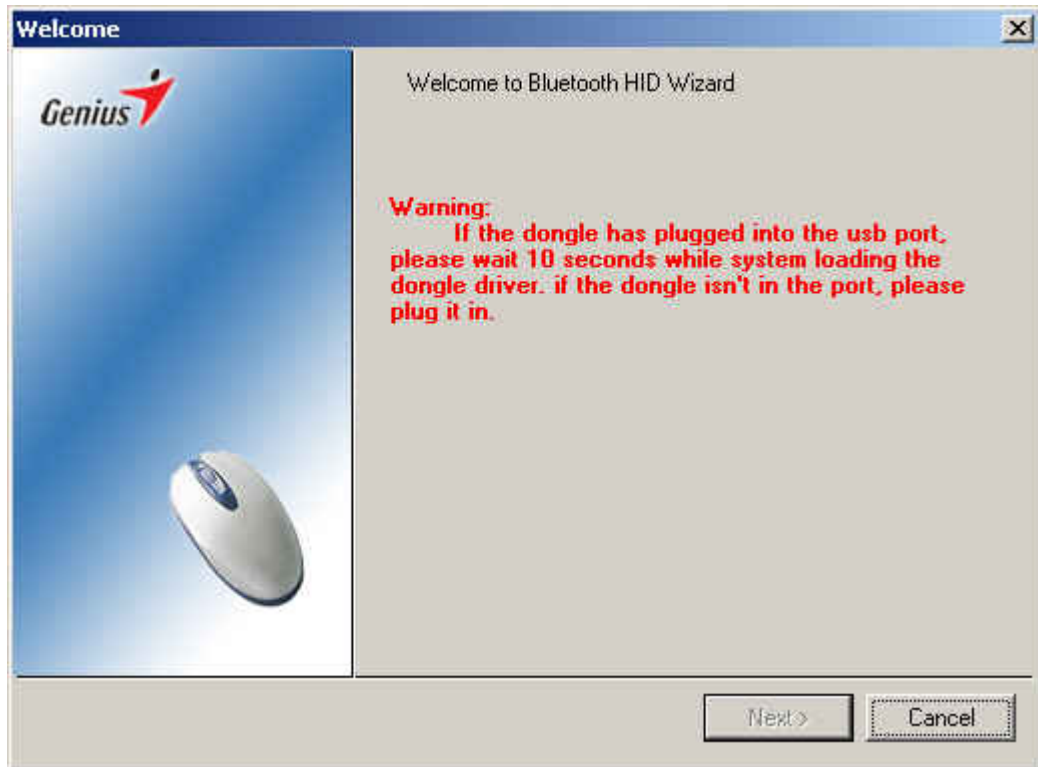
## Find Bluetooth HID Devices

This chapter assist you in finding bluetooth hid devices include mouse and keyboard.

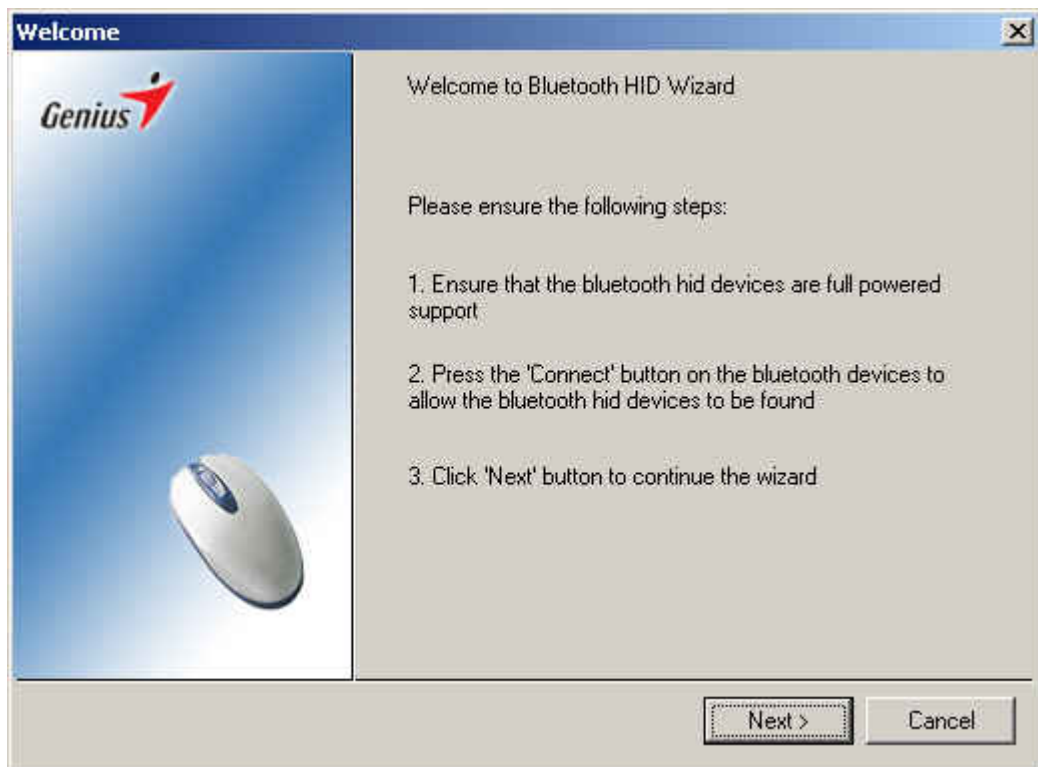
please refer to following steps:

- Click the 'Find Bluetooth HID Devices' shortcut on desktop or from program folder. A Wizard will popup on the desktop.

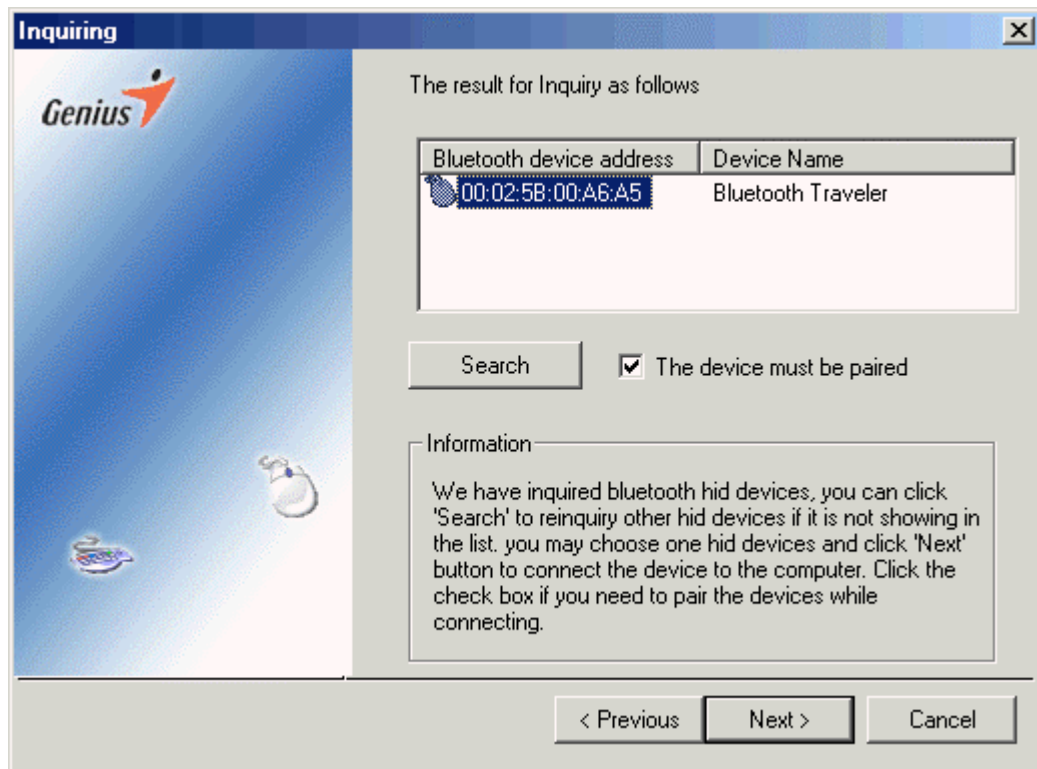




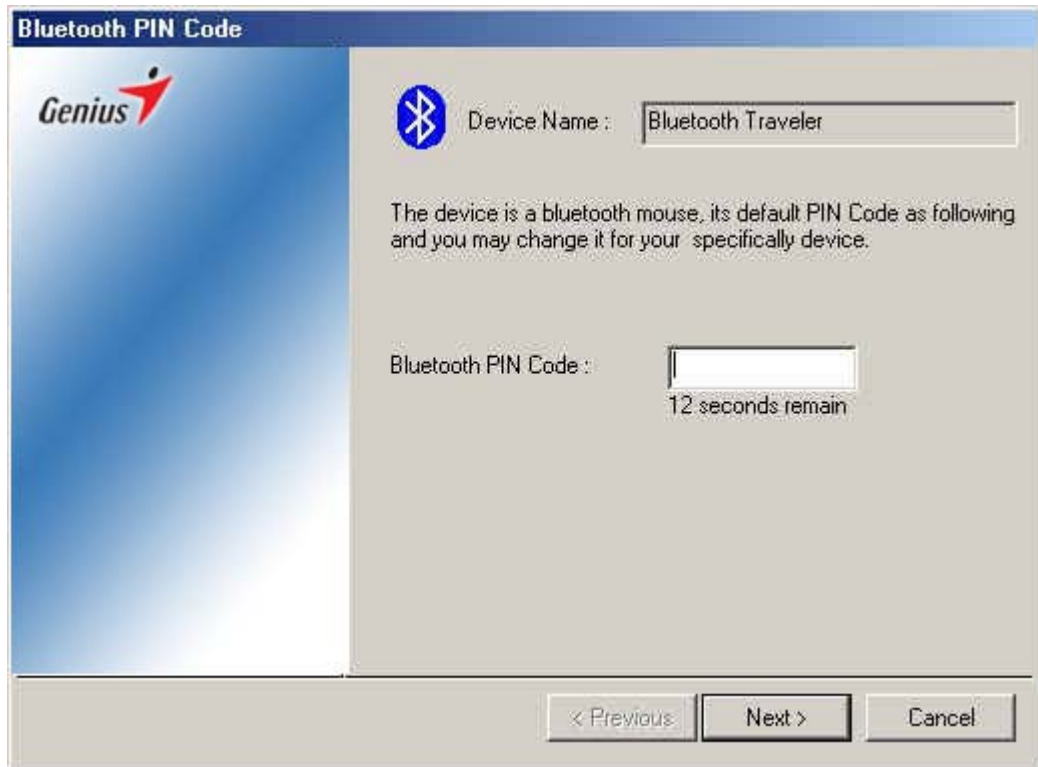
- When you see the picture above, it means that no bluetooth hci dongle plug or bluetooth hid dongle doesn't switch from hid mode to hci mode. what you do is plug a bluetooth hci dongle or wait for system switch hid dongle to hci mode.



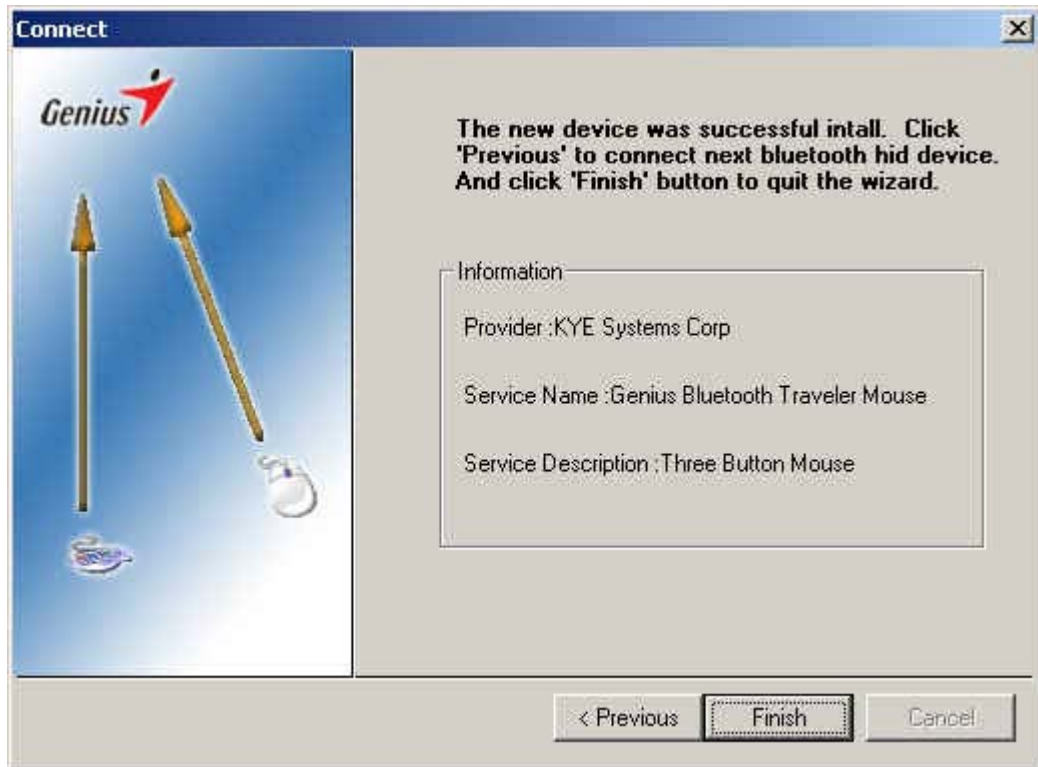
- After you plug a hci dongle or system already switch hid dongle from hid mode to hci mode, you will see the picture above. It means system get ready for inquiring any bluetooth hid devices around the dongle. Click 'Next' button when you are sure that bluetooth hid devices are full powered and you has ready pushed the 'Connect' button on the bluetooth hid devices.



- the picture above show that system inquire a hid device during the available inquired time. the list box show the bluetooth hid devices information such as BD\_ADDR, bluetooth device name.



- For information safety reason, some device need to be paired with dongle. such as bluetooth hid keyboard. to bluetooth hid mouse, the pairing procedure is optional. But if you want to use bluetooth hid devices in hid mode. you must pair the hid device with dongle. For Bluetooth Traveler Mouse, We set the PIN CODE as NULL, so you have no need to input anything in the Bluetooth PIN code dialog. you click next button and go on to connect the device.



- The Wizard connect the hid device you chose. the dialog show that the device has been registered to operation system. Click 'Finish' button.

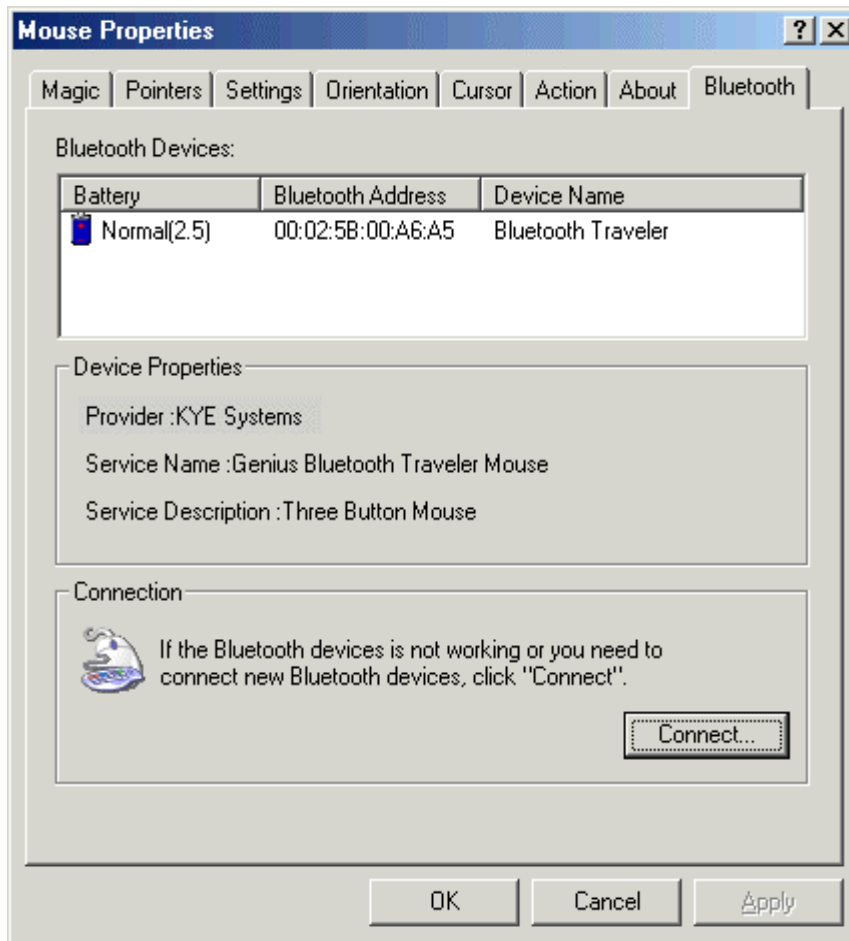
## Find Bluetooth Mouse

This section help you with finding bluetooth mouse devices, exclude bluetooth keyboard.

please refer to following steps:

- Click task icon on the taskbar and choose 'Mouse' item. or you can do this by choose mouse property from Control Panel.





- Click 'Bluetooth' property page from the mouse property
- The list box will show the bluetooth mouse connected. Click 'Connect...' button to find another new bluetooth mouse.
- And then refer to [Find Bluetooth HID Devices](#)

## Getting Support

This chapter give you the way to support.

### How to ...

This section provide you most useful method from installing to use:

#### [How to make a bluetooth device be ready?](#)

Most bluetooth hid devices have a 'Connect' button or other, it make the bluetooth hid device can be inquired in later 30 seconds according bluetooth profile. you should press the 'Connect' button before your computer begin to inquire the blueooth devices.

How to quickly use my bluetooth keyboard and mouse after reboot my computer?

The bluetooth stack support reconnecting automatically. if the bluetooth keyboard or mouse has been connect to computer and can work properly, after system reboot, the bluetooth mouse and keyboard will reconnect to computer when you press any key on bluetooth keyboard or press any button on bluetooth mouse.

## Troubleshooting

This section provide you most useful information for you to clean your most trouble:

Why bluetooth mouse can't move smoothly or stop working?

Maybe it is no power support. please exchange the battery. And touch the bluetooth device, then it will connect to operation system automatically. And when bluetooth hid devices has low power. the icon on the task bar will flash automatically.

when the operation system are very busy, the bluetooth mouse will move slowly as any other usb mouse.

Why I can't find my bluetooth device by inquiring it?

First, please ensure that your bluetooth device are full powered and transmission range is less 10 meters

Second, you must press **Connect** button on your bluetooth device to let your bluetooth device can be discovered.

If you still can't find your bluetooth device, please unplug the bluetooth dongle from the usb port on your computer. and plug it again after a few seconds.

Why I can't use my keyboard after I replace my battery in Bluetooth Keyboard?

you should reconnect your bluetooth keyboard with Wizard or from keyboard control panel. because bluetooth keyboard need a PIN code.

Why my bluetooth mouse can't be useful for a little long time after system coming back from standby mode.

when you use the hid mode dongle, it will switch from hid mode to hci mode after system coming back from standby mode, it will take you a little time.

[Why my bluetooth mouse can't scroll before installing driver package and after uninstalling driver packet?](#)

bluetooth mouse is a standard 3 buttons usb mouse before installing driver package and after uninstalling driver packet. you should install driver packet if you want scroll and more functions.

[Why my computer wake up from standby automatically soon after I sleep computer by bluetooth mouse?](#)

To save battery power, bluetooth mouse will automatically originate some events to enter lower power state soon after you didn't use the bluetooth mouse. these event will wake up computer. all these event will originate in 5seconds, so when you didn't use the bluetooth mouse for 5 seconds before you sleep computer. bluetooth mouse will not originate all these event to wake up computer until you move it.

[What's the meaning of different icons on taskbar?](#)

To make the user interface more friendly, we design different icons to show different status of bluetooth system on the machine.



No HCI dongle is on the computer or the dongle is HID mode, it hasn't been switched to HCI mode.



A bluetooth HCI dongle is on the computer or a HID dongle has been switched to HCI mode.



Bluetooth HCI dongle has connected to bluetooth hid devices.



Bluetooth hid device connected to the dongle has low power supported.

## Knowledge Center

This chapter will show you much knowledge about bluetooth technology.

### [Bluetooth](#)

Bluetooth is a standard for a **small , cheap radio chip to be plugged into computers, printers, mobile phones, etc.** A Bluetooth chip is designed to replace cables by taking the information normally carried by the cable, and transmitting it at a special frequency to a receiver Bluetooth chip, which will then give the information received to the computer, phone whatever.

### [bluetooth hid stack](#)

bluetooth hid stack is a protocol stack that defines how devices with Bluetooth wireless communications can use the HID Protocol initially to discover the feature set of a HID, and then communicate with the HID.

### [hid dongle](#)

hid dongle is a Bluetooth hardware with Universal Serial Bus (USB) port. and the hardware is working like a standard USB composite device with a HID Keyboard and a HID Mouse. Bluetooth Keyboard and Bluetooth Mouse can connected to the hid dongle automatically when they paired during connecting. and bluetooth hid devices will work like a standard USB keyboard and USB mouse. hid dongle can be switched to hci mode.

### [hid mode](#)

In this mode the device will appear as a USB Composite Device containing HID keyboard and HID mouse functionality. In this mode, USB VendorID = 0x0458 ProductID = 0x1000.

On start up, the radio will become connectable to allow the last used Bluetooth mouse and keyboard to reconnect. See Last Used Devices for details of how these are determined. The page-scan interface is set to 100ms to allow the devices to reconnect quickly.

When the mouse and keyboard become active, they will reconnect to the USB device and the Bluetooth HID reports will be translated to USB HID and passed to the host via the appropriate HID endpoint.

If the Bluetooth HID mouse or keyboard connection is lost at anytime, the dongle will enter page scan again to allow the device to reconnect.

### [hci dongle](#)



hci dongle is Bluetooth hardware with Universal Serial Bus (USB) port. and the hardware is embeded with Bluetooth Host Controller Interface.

### *hci mode*

In this mode, the dongle will behave as a standard USB HCI Bluetooth dongle. As with a standard USB dongle USB VendorID = 0x0458 ProductID = 0x0001 in this mode.

### *BD\_ADDR*

BD\_ADDR is the unique address of a Bluetooth device. Each Bluetooth transceiver is allocated a unique 48-bit Bluetooth device address (BD\_ADDR). This address is derived from the IEEE802 standard.

### *bluetooth device name*

The Bluetooth device name is the user-friendly name that a Bluetooth device presents itself with.

### *inquire*

In the Bluetooth system, an inquiry procedure is defined which is used in applications where the destination's device address is unknown to the source. One can think of public facilities like printers or facsimile machines, or access points to a LAN. Alternatively, the inquiry procedure can be used to discover which other Bluetooth units are within range. During an **inquiry** substate, the discovering unit collects the Bluetooth device addresses and clocks of all units that respond to the inquiry message. It can then, if desired, make a connection to any one of them by means of the previously described page procedure.

### *Bluetooth PIN code*

The Bluetooth PIN is used to authenticate two Bluetooth devices (that have not previously exchanged link keys) to each other and create a trusted relationship between them. The PIN is used in the pairing procedure to generate the initial link key that is used for further authentication. The PIN may be entered on UI level but may also be stored in the device; e.g.in the case of a device without sufficient MMI for entering and displaying digits.

## **Uninstall Bluetooth Traveler Mouse**

To uninstall Bluetooth Traveler Mouse package from operation system, you should click 'Uninstall Bluetooth Traveler Mouse' shortcut in the program folder from start menu. And then restart the computer.

## **Federal Communication Commission Interference Statement**

This equipment has been tested and found to comply with the limits for a Class B digital device, pursuant to Part 15 of the FCC Rules. These limits are designed to provide reasonable protection against harmful interference in a residential installation. This equipment generates, uses and can radiate radio frequency energy and, if not installed and used in accordance with the instructions, may cause harmful interference to radio communications. However, there is no guarantee that interference will not occur in a particular installation. If this equipment does cause harmful interference to radio or television reception, which can be determined by turning the equipment off and on, the user is encouraged to try to correct the interference by one of the following measures:

- Reorient or relocate the receiving antenna.
- Increase the separation between the equipment and receiver.
- Connect the equipment into an outlet on a circuit different from that to which the receiver is connected.
- Consult the dealer or an experienced radio/TV technician for help.

FCC Caution: Any changes or modifications not expressly approved by the party responsible for compliance could void the user's authority to operate this equipment.

This device complies with part 15 of the FCC Rules. Operation is subject to the following two conditions: (1) This device may not cause harmful interference, and (2) this device must accept any interference received, including interference that may cause undesired operation.