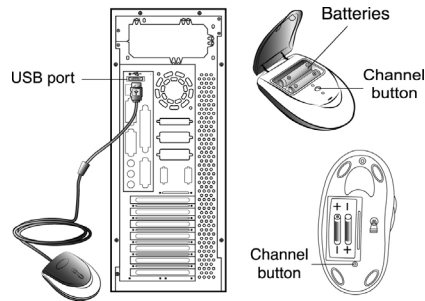
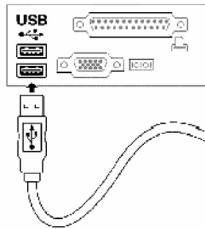


Hardware Installation

1. You can connect the receiver to a USB port of a PC
2. Install two AA batteries in the mouse.



3. Turn on your computer.
4. After you open Windows, please press the button on the receiver first and then press the button under the mouse for channel setting.

Important: You can use the battery charger receiver to recharge two AA each time when you use the PC. Plug the battery charger receiver USB connector into the PC directly and remember do not put the batteries in the wrong direction, use the same types of batteries, and do not recharge via the USB hub, that will make your receiver, main-board and hub burn or become non-usable easily. Also, keep all drinks away! If any spill occurs on the receiver, unplug the USB connector first and clean the receiver immediately. Please remove the batteries if you do not use this device for at least two weeks.

Warning: (Troubleshooting)

1. Please do not use Wireless optical mouse on a desk which is made of glass, mirror, iron, or black velvet. Also, a flat surface is necessary or the Optical Sensor will error easily. When you use Wireless optical mouse on a desk that is made of metal, try using a pad and reduce the receiving distance.
2. Before the first installation is completed (channel setting ready), the mouse will not work.
3. The Wireless optical mouse channel provides 256 ID-codes, and it automatically selects the ID # for your mouse. You can only set up one Wireless optical mouse at a time. But if you have additional Wireless optical mouse sets in an area of 10 square meters, more interference will occur between the receiver and your mouse.

-
-
- If you feel the mouse does not move smooth as usual, then the batteries have lost their charge, so please replace them. Also, the wireless icon will be blinking “red” when there is a battery-low situation. The LED on the receiver shows the battery-recharging status (from shining to LED completely “on” for battery full).



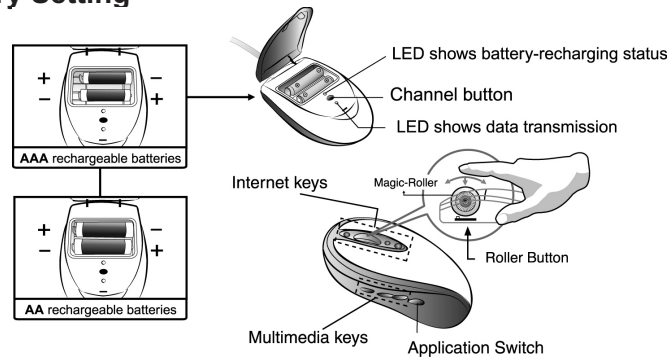
You should set up the channel every time you replace the batteries.

- If you need to buy new batteries, please choose Ni-MH (Nickel-Metal-Hydride) AA batteries, 1.2V, 1300 to 1600 mAH. **Please do not mix or use other types of batteries (Li-ion, Ni-Cd, Alkaline, etc.)**
- The Wireless optical mouse with radio frequency gives you free movement and an enjoyable experience. For optimal performance, place the receiver at least 8 inches (about 20 cm) away from the mouse and other electrical devices, such as the computer, monitor, and etc.

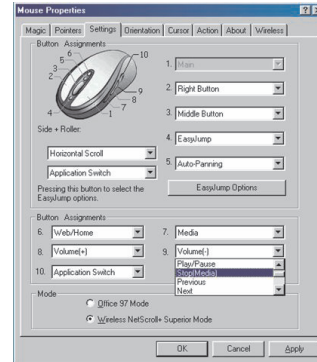
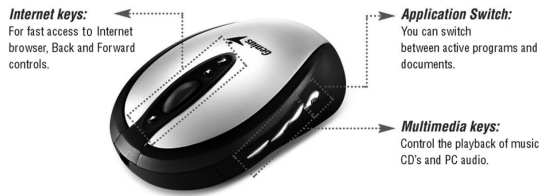
Software Installation

- Make sure the mouse is connected to the computer.
- Put the Setup disk (or CD) into the disk drive.
- Follow the instructions on the screen to finish the software installation.

Factory Setting



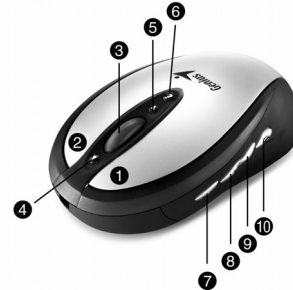
10 “One Touch” keys for fast access to multimedia, the Internet, and the application switch.



Button Assignments

The Button Assignment feature lets you work in a more efficient way because you can assign the most frequently used commands in Windows to the mouse buttons.

1. **Left Button:** Provides traditional mouse functions like click, double click and drag.
2. **Right Button:** You can assign this button to frequently used keyboard and mouse functions in addition to features like Easy Jump, Auto-Panning, Zoom, etc.
3. **Magic-Roller:** Press the “Magic-Roller” to surf the Internet and Windows documents
4. **Back:** See previous page when viewing the Internet
5. **Forward:** Go to next page when viewing the Internet
6. **WWW:** Open browser (Netscape or IE)
7. **Play & Pause:** Play and pause of audio or video CD's
8. **Vol. +:** Increase volume
9. **Vol. -:** Decrease volume
10. **Application Switch:** You can switch between active programs and documents



FCC Compliance and Advisory Statement

This device complies with Part 15 of the FCC rules. Operation is subject to the following two conditions: 1) this device may not cause harmful interference, and 2) this device must accept any interference received, including interference that may cause undesired operation.

The equipment has been certified to comply with the limits for a Class B computing device pursuant to Part 15 of the FCC Rules. These limits are designed to provide reasonable protection against harmful interference in a residential installation. This equipment generates, uses, and can radiate radio frequency energy and, if not installed or used in accordance with the instructions, may cause harmful interference to radio communications. However, there is no guarantee that interference will not occur in a particular installation. If this equipment does cause harmful interference to radio or television reception, which can be determined by switching the equipment off and on. The user can try to correct the interference by the following measures:

1. Reorient or relocate the receiving antenna.
2. Increase the separation between the equipment and receiver.
3. Connect the equipment to an outlet on a circuit different from that to which the receiver is connected.
4. Consult the dealer or an experienced radio/TV technician for help.

Changes or modification not expressly approved by the party responsible for compliance could void the user's authority to operate the equipment.