

### **FCC Compliance and Advisory Statement**

This device complies with Part 15 of the FCC rules. Operation is subject to the following two conditions: 1) this device may not cause harmful interference, and 2) this device must accept any interference received, including interference that may cause undesired operation.

The equipment has been certified to comply with the limits for a Class B computing device pursuant to Part 15 of the FCC Rules. These limits are designed to provide reasonable protection against harmful interference in a residential installation. This equipment generates, uses, and can radiate radio frequency energy and, if not installed or used in accordance with the instructions, may cause harmful interference to radio communications. However, there is no guarantee that interference will not occur in a particular installation. If this equipment does cause harmful interference to radio or television reception, which can be determined by switching the equipment off and on. The user can try to correct the interference by the following measures:

1. Reorient or relocate the receiving antenna.
2. Increase the separation between the equipment and receiver.
3. Connect the equipment to an outlet on a circuit different from that to which the receiver is connected.
4. Consult the dealer or an experienced radio/TV technician for help.

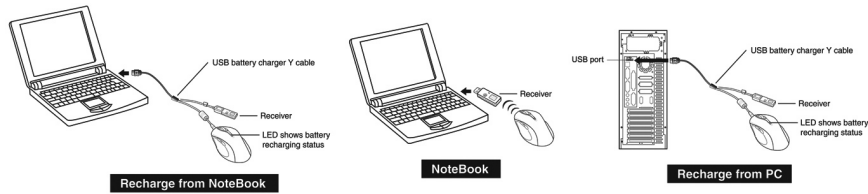
Changes or modification not expressly approved by the party responsible for compliance could void the user's authority to operate the equipment.

**FCC ID:FSUGMZH9**

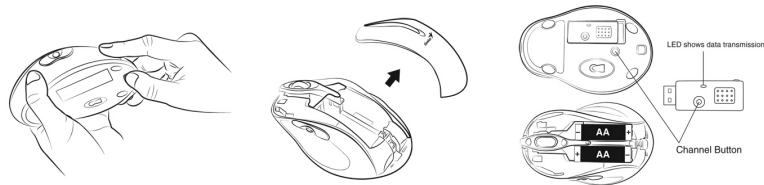
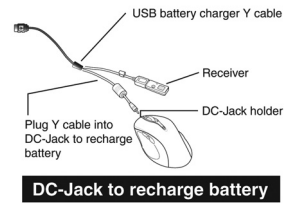
**This device complies with part 15 of the FCC rules. Operation is subject to the following two conditions: 1) this device may not cause harmful interference, and 2) this device must accept any interference received, including interference that may cause undesired operation.**

## Hardware Installation

1. You can connect the receiver to a USB port of a PC or Notebook.



2. If you want to connect the receiver to a PC or recharge the batteries, please use the USB battery charger Y cable. **(Please do not connect the receiver directly to a PC that is placed under a table, or the RF performance will decrease dramatically.)**
3. Install two AA rechargeable batteries in the mouse. **(Use only rechargeable batteries. Using any other type of battery could cause serious damage to your mouse or mainboard). Do not charge batteries unless there are other batteries in the mouse. Otherwise, you cannot use the mouse if you are charging the batteries.**



4. Turn on your computer.
5. After you open Windows, press the button on the receiver first, then press the button under the mouse for channel setting.

---

---

***Important: When you use this product for the first time, the mouse may seem to be sluggish because it takes between 12 to 16 hours of use for the batteries to be recharged to obtain full performance. The other alternative is to recharge the batteries before you use the Wireless optical mouse device. Please remove the batteries if you do not use this device for at least two weeks.***

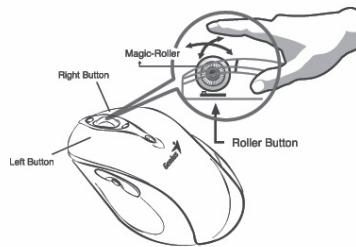
**Warning: (Troubleshooting)**

1. Please do not use Wireless optical mouse on a desk which is made of glass, mirror, iron, or black velvet. Also, a flat surface is necessary or the Optical Sensor will error easily. When you use Wireless optical mouse on a desk that is made of metal, try using a pad and reduce the receiving distance
2. Before the first installation is completed (channel setting ready), the mouse will not work.
3. The Wireless optical mouse channel provides 256 ID-codes, and it automatically selects the ID # for your mouse. You can only set up one Wireless optical mouse at a time. But if you have additional Wireless optical mouse sets in an area of 10 square meters, more interference will occur between the receiver and your mouse.
4. If you feel the mouse does not move as smooth as usual, then the batteries have lost their charge, so you need to replace them or use the USB battery charger Y cable to recharge the batteries. The LED on the mouse shows the battery-recharging status: it will shine when empty and be clear when the batteries are recharged. **You should set up the channel every time you replace the batteries.**
5. If you need to buy new batteries, please choose Ni-MH (Nickel-Metal-Hydride) AA batteries, 1300 to 1500 mAH, 1.2 V. **Please do not mix or use other types of batteries (Li-ion, Ni-Cd, Alkaline, etc.). Recycle your batteries according to local law.**
6. The Wireless optical mouse with radio frequency gives you free movement and an enjoyable experience. For optimal performance, place the receiver at least 8 inches (about 20 cm) away from the mouse and other electrical devices, such as the computer, monitor, and etc.

**Software Installation**

1. Make sure the mouse is connected to the computer.
2. Put the Setup disk (or CD) into the disk drive.
3. Follow the instructions on the screen to finish the software installation.

## Factory Setting

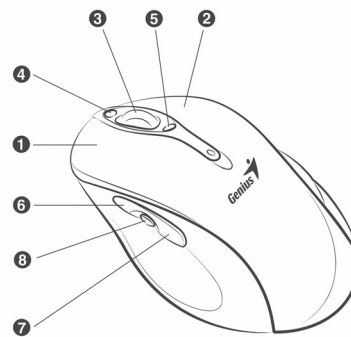


## Button Assignments

1. **Left Button:** Provides traditional mouse functions such as click, double click and drag.
2. **Right Button:** You can assign this button frequently used keyboard and mouse functions in addition to features like EasyJump, Auto-Panning, Zoom, etc.
3. **Magic-Roller:** Press the “Magic-Roller” to surf the Internet and Windows documents.

**Horizontal Scroll:** Press the roller to the left and the cursor scrolls to the left; press the roller to the right and the cursor scrolls to the right.

4. **Previous:** See previous song when viewing the media Player.
5. **Next:** Go to next song when viewing the media player.
6. **Vol. +:** Increase volume
7. **Vol. -:** Decrease volume
8. **Play & Pause:** Play and pause of audio or video CD's



NOTE : THE MANUFACTURER IS NOT RESPONSIBLE FOR ANY RADIO OR  
TV  
INTERFERENCE CAUSED BY UNAUTHORIZED MODIFICATIONS TO  
THIS  
EQUIPMENT. SUCH MODIFICATIONS COULD VOID THE USER ' S  
AUTHORITY  
TO OPERATE THE EQUIPMENT.