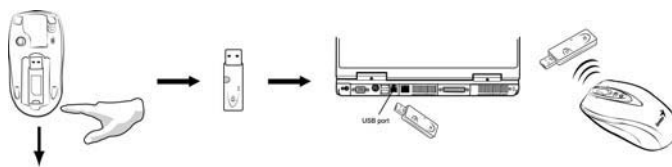


Hardware Installation

1. You can connect the receiver to a USB port of a PC



2. Install two AA batteries in the mouse.




3. Turn on your computer. The mouse can be worked.

Note: If the mouse does not have connection to the receiver, press the button on the receiver first and then press the button under the mouse for channel setting again.

Important: Remember do not put the batteries in the wrong direction; use the same types of batteries. Also, keep all drinks away! If any spill occurs on the receiver, unplug the USB connector first and clean the receiver immediately. Please switch the button to "off" under the mouse once you don't use it for a long time, and remove the batteries if you do not use this device for at least two weeks.

Warning: (Troubleshooting)

1. Please do not use wireless laser mouse on a desk, which is made of glass or mirror. Also, a flat surface is necessary or the laser sensor will error easily. When you use wireless laser mouse on a desk that is made of metal, try using a pad and reduce the receiving distance.
2. The wireless laser mouse channel provides 16 channels and 256 ID-codes, and it automatically selects the ID # for your mouse. You can only set up one wireless laser mouse at a time.

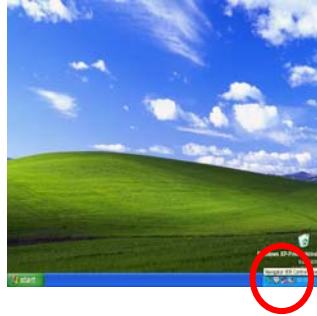
3. If the power indicator  is on (see Button Assignments), then the batteries have lost their charge, so you need to replace them.

Software Installation

1. Make sure the mouse is connected to the computer.
2. Put the CD driver into the CD drive.
3. Follow the instructions on the screen to finish the software installation.

Security Function Setting:

1. After you install software driver, please click the mouse icon on the task bar and select "Mouse".




2. Click "Settings" when the Mouse Properties appears up and click "Security Options".
3. Choose a picture from your images to display when the computer is locked. Also set your password for unlock computer. Then, press "OK", and the security setting will be finished.




ENGLISH

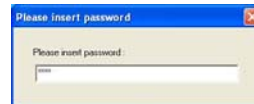
4. If you want to start the security function, just

press “”, and the picture you set pop up to hide the screen. For security, the mouse and keyboard won't work.

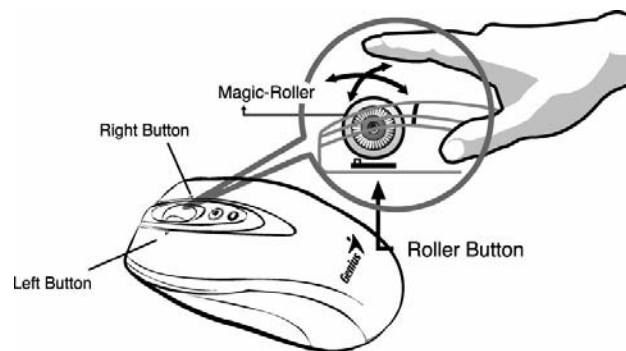


5. If you want to unlock this function, just press

“” again, and install your password.

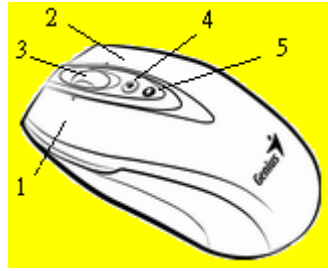


Factory Setting



Button Assignments

1. **Left Button:** Provides traditional mouse functions like click, double click and drag.
2. **Right Button:** You can assign this button to frequently used keyboard and mouse functions in addition to features like Easy Jump, Auto-Panning, Zoom, etc.
3. **Magic-Roller:** Press the “Magic-Roller” to surf the Internet and Windows documents.
Horizontal Scroll: Press the roller to the left and the cursor scrolls to the left; press the roller to the right and the cursor scrolls to the right.
4. **Security:** Lock your screen, mouse and keyboard unless you install the password.
5. **Power indicator:** If your battery power is low, the LED will brighten.



FCC RF Radiation Exposure Statement: This equipment complies with FCC RF radiation exposure limits set forth for an uncontrolled environment. This device and its antenna must not be co-located or operating in conjunction with any other antenna or transmitter.

This device complies with part 15 of the FCC rules. Operation is subject to the following two conditions.
(1) This device may not cause harmful interference, and
(2) This device must accept any interference received, including interference that may cause undesired operation.

Per FCC 15.21, you are cautioned that changes or modifications not expressly approved by the part responsible for compliance could void the user's authority to operate the equipment.