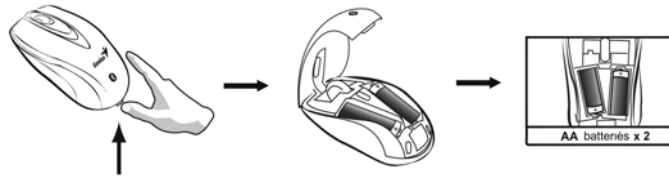


Hardware Installation

1. Push the button to open the upper cover and insert two AA batteries in the mouse.



Pairing Process in Windows XP SP2

1. Press and hold the "CONNECT" button under the mouse until the LED turns green.



2. Open the Windows control panel, then select "Bluetooth devices".



3. Click "Add....."

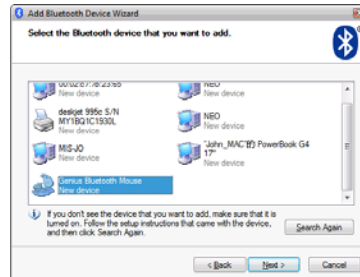


ENGLISH

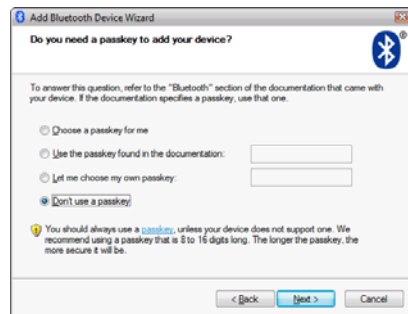
4. Select “My device is setup and ready to be found”, then click “Next”.



5. In “Peripherals (Keyboards, mice, joysticks)”, select Genius Bluetooth Mouse and click “Next”.

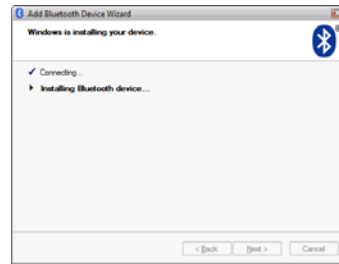


6. Select “Don’t use a passkey” and click “Next”.

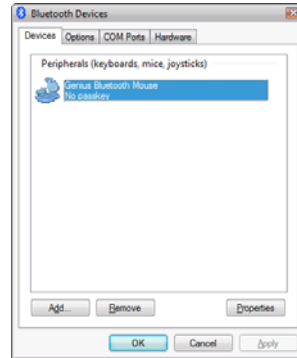


ENGLISH

7. Windows will start to connect the Genius Bluetooth Mouse automatically. Press the finish button after the connection process is completed.



Once the connection between the Genius Bluetooth Mouse and your computer is established, the connection will be kept permanently. That means the connection will re-establish automatically each time you run Windows.



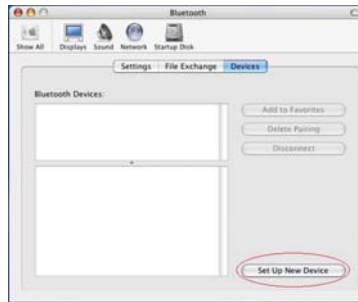
Pairing Process in Mac OS X 10.2.6 or later

1. Press and hold the “CONNECT” button under the mouse until the LED turns green.

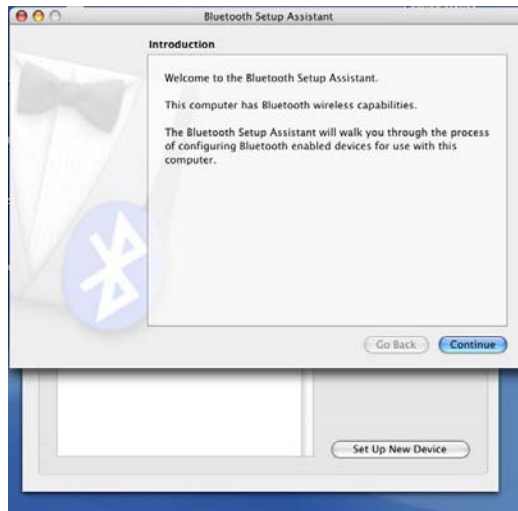


ENGLISH

2. Click the Bluetooth icon on the task bar and select “Setup Bluetooth device”.



3. Click “Continue” when the “Bluetooth Setup Assistant” appears.

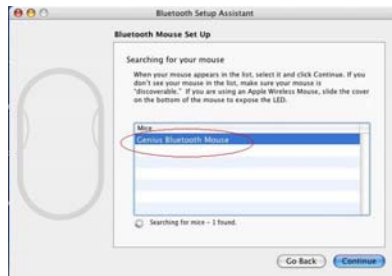


ENGLISH

4. Choose “Mouse” and press “Continue” to the next step.



5. When Bluetooth finds the “Genius Bluetooth Mouse”, please press “Continue” to the next step.

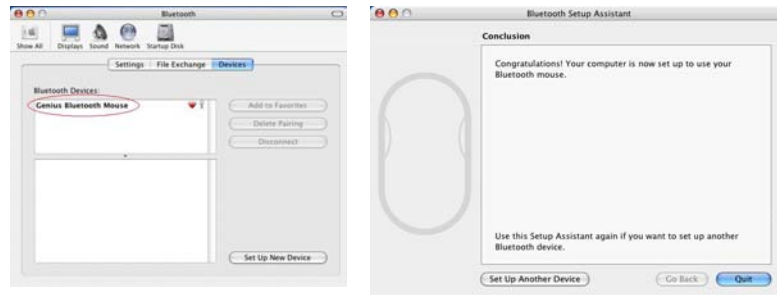


6. Click “Continue” when the “Passkey exchange with your mouse” appears.



ENGLISH

7. The connection is now successful and you can use your Genius Bluetooth Mouse.



Now you can use the Genius Bluetooth Mouse wirelessly with a Bluetooth enabled Apple computer. Afterwards, the connection of the Genius Bluetooth mouse will re-establish automatically each time Mac OS X runs.

This device complies with Part 15 of the FCC Rules. Operation is subject to the following two conditions:

- (1) This device may not cause harmful interference.
- (2) This device must accept any interference received, including interference that may cause undesired operation.

Per FCC 15.21, you are cautioned that changes or modifications not expressly approved by the part responsible for compliance could void the user's authority to operate the equipment.

ENGLISH

[R1]

This equipment has been tested and found to comply with the limits for a class B digital device, pursuant to part 15 of the FCC Rules. These limits are designed to provide reasonable protection against harmful interference in a residential installation.

This equipment generates, uses and can radiate radio frequency energy and, if not installed and used in accordance with the instructions, may cause harmful interference to radio communications. However, there is no guarantee that interference will not occur in a particular installation. If this equipment does cause harmful interference to radio or television reception, which can be determined by turning the equipment off and on, the user is encouraged to try to correct the interference by one or more of the following measures:

- Reorient or relocate the receiving antenna.
- Increase the separation between the equipment and receiver.
- Connect the equipment into an outlet on a circuit different from that to which the receiver is connected.
- Consult the dealer or an experienced radio/TV technician for help.

ENGLISH

FCC RF Radiation Exposure Statement: This equipment complies with FCC RF radiation exposure limits set forth for an uncontrolled environment. This device and its antenna must not be co-located or operating in conjunction with any other antenna or transmitter.