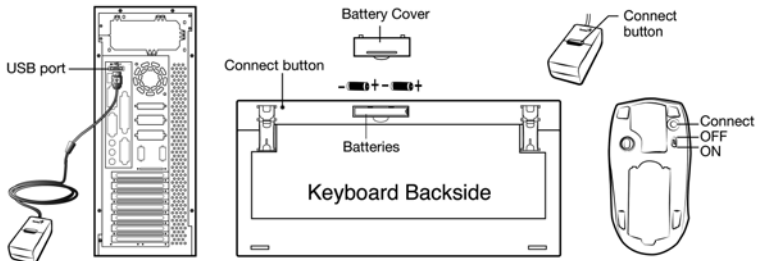


Hardware Installation

1. Install two AA batteries each into the mouse and keyboard.
2. Plug in your USB receiver to a USB port of your PC.
3. Turn on your PC.



Software Installation

1. Place your CD driver in your PC drive for software installation
2. Follow the instruction on the screen to finish the software installation

Replace Batteries

When mouse or keyboard does not work properly, then the batteries have lost their charge, so please replace them.

(Warning: please do not mix or use different types of batteries at the same time)

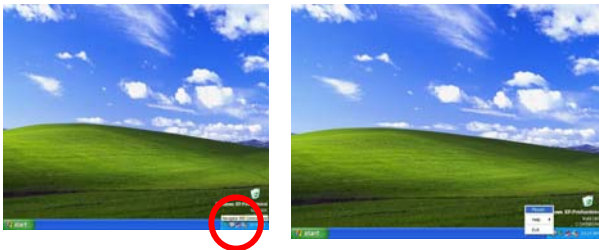
ID Channel Setting

The channel ID is factory preset. The green LED (data transmission indicator) will be lit constantly when the wireless device is in normal operation. In case your wireless devices do not work, please reset the ID channel by:

1. Press the connect button on the receiver and the LED will be blinking for connection.
2. Press the connect button of the wireless device once within 20 seconds and observe if the LED light on the receiver has gone off. If yes, it means the wireless device is ready for use.

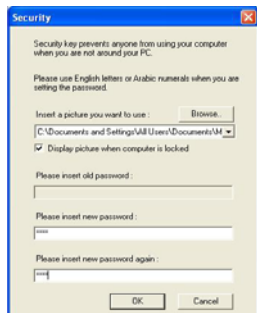
Security Function Setting:


1. After you install software driver, please click the mouse icon on the task bar and select "Mouse".




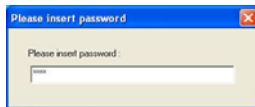
2. Click "Settings" when the Mouse Properties appears up and click "Security Options".
3. Choose a picture from your images to display when the computer

is locked. Also set your password for unlock computer. Then, press “OK”, and the security setting will be finished.



4. If you want to start the security function, just press “”, and the picture you set pop up to hide the screen. For security, the mouse and keyboard won't work.
5. If you want to unlock this function, just

press  ”again, and install your password.



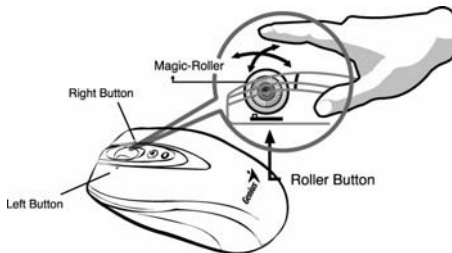
“Warning (Trouble shooting)”

1. The wireless desktop set provides 256 ID codes, and it selects the ID # for your wireless devices. You can only set up one wireless desktop at a time. When you have another 27Mhz wireless desktop set within 10 square meters, there may be interference between the wireless devices.

ENGLISH

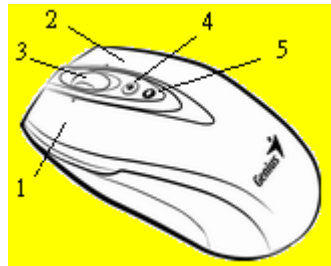
2. Although that the mouse has granted the eye safety certification, it is strongly suggested that a direct eye contact with the laser lens should be avoid.
3. To use MSN and Lock function, it requires software to be installed.
4. To re-program for other media programs, software installation is required.

Mouse Factory Setting



Button Assignments

1. **Left Button:** Provides traditional mouse functions like click, double click and drag.
2. **Right Button:** You can assign this button to frequently used keyboard and mouse functions in addition to features like Easy Jump, Auto-Panning, Zoom, etc.
3. **Magic-Roller:** Press the "Magic-Roller" to surf the Internet and Windows documents.



Horizontal Scroll: Press the roller to the left and the cursor scrolls to the left; press the roller to the right and the cursor scrolls to the right.

4. **Security:** Lock your screen, mouse and keyboard unless you install the password.
5. **Power indicator:** If your battery power is low, the LED will brighten.

Keyboard hot key definition



1. My Computer: Activate My Computer function
2. Mail: Activate *email* feature
3. WWW: Open browser in *Netscape or IE*
4. My favorite: Activate my favorite function
5. MSN: Activate internet *conversational tools* such MSN messenger, ICQ, Windows messenger, Skype, etc
6. Lock: Activate the security lock function
7. Calculator: activate *Calculator* function
8. Media player: Activate *Media Player* function
9. Volume Up: Increase volume

10. Stop: *Stop playing* music or video sources
11. Volume Down: Decrease volume level
12. Play/Pause: Play/Pause the music or video sources.

Notes on Battery Usage

When you use the battery, carefully read and strictly observe the **Safety Instructions** and the notes described below:

- Different battery types and surrounding temperatures may affect the battery performance.
- Avoid using batteries in extremely cold environments as low temperatures can shorten the battery life and reduce wireless device performance.
- If you are using the new rechargeable battery or rechargeable battery that has not been used for an extended period of time (batteries that pass the expiry date are exceptions) might affect the number of pictures that can be taken. Therefore, to maximize their performance and lifetime, we recommend that you fully charge the batteries and discharge them for at least one complete cycle before use.
- The battery may feel warm when using the wireless device for an extended period of time or using the flash continuously. This is normal and not a malfunction.
- The wireless device may feel warm when being used continuously or for an extended period of time. This is normal and not a malfunction.
- If you will not be using the batteries for an extended period of time, remove them from the wireless device to prevent leakage or corrosion.
- Always keep the terminals in a clean state.
- Never use manganese batteries.
- Risk of explosion if battery is replaced by an incorrect type.
- Dispose of used batteries according to the instructions.

ENGLISH

THIS DEVICE COMPLIES WITH PART 15 OF THE FCC RULES. OPERATION IS SUBJECT TO THE FOLLOWING TWO CONDITIONS: (1) THIS DEVICE MAY NOT CAUSE HARMFUL INTERFERENCE, AND (2) THIS DEVICE MUST ACCEPT ANY INTERFERENCE RECEIVED, INCLUDING INTERFERENCE THAT MAY CAUSE UNDESIRE OPERATION.

NOTE: THE MANUFACTURER IS NOT RESPONSIBLE FOR ANY RADIO OR TV INTERFERENCE CAUSED BY UNAUTHORIZED MODIFICATIONS TO THIS EQUIPMENT. SUCH MODIFICATIONS COULD VOID THE USER'S AUTHORITY TO OPERATE THE EQUIPMENT.