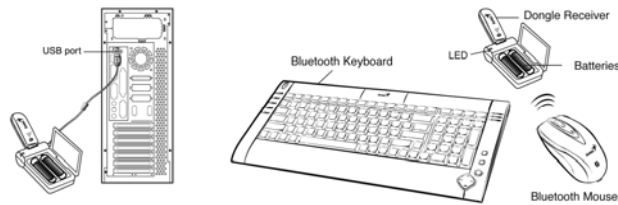


## Introduction

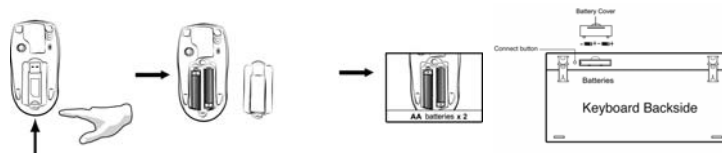
LuxeMate R910 is a Bluetooth product designed to create a total solution for a Bluetooth environment. It supports the boot mode function that allows you to activate the keyboard and mouse function before the Bluetooth driver has been installed.

## Hardware Installation

1. Connect the Bluetooth receiver to a USB port of your PC or Notebook.



2. Insert two AA batteries into the keyboard and make sure the polarity is correct.
3. Push the button to open the upper cover and insert two AA batteries in the mouse.



### **How to start when the Bluetooth driver has not been installed**

1. Press the connect button underneath the keyboard and observe the flashing LED light.
2. Press the ID switch button on the receiver for four seconds and observe the flashing light.
3. To confirm the connection status, the LED light on the keyboard will now turn off.
4. Repeat the above steps for mouse connection.

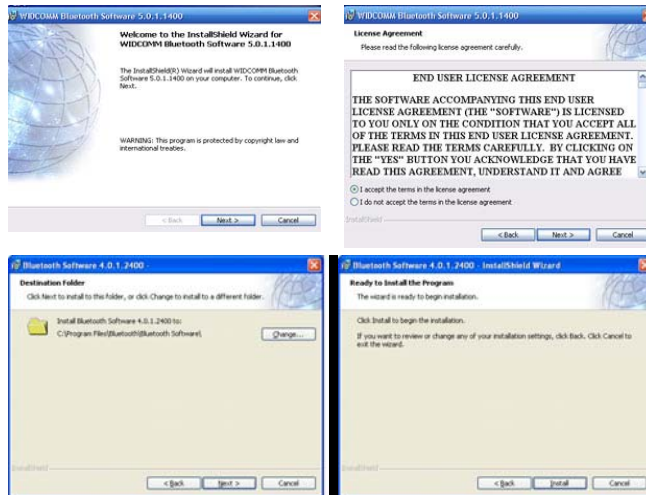
### **Software Installation (when you use Genius Bluetooth dongle receiver)**

#### **For Windows:**

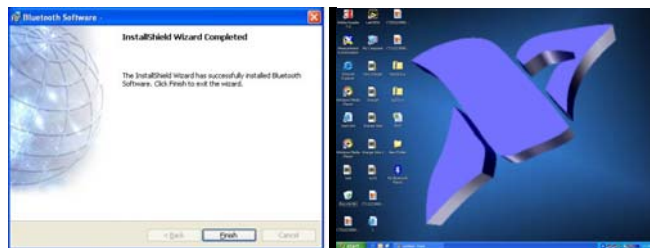
1. Make sure the Bluetooth receiver is connected to the computer.
2. Put the BTW driver into the CD/DVD-Rom drive.
3. Select “No, not this time”, then “click to install” .



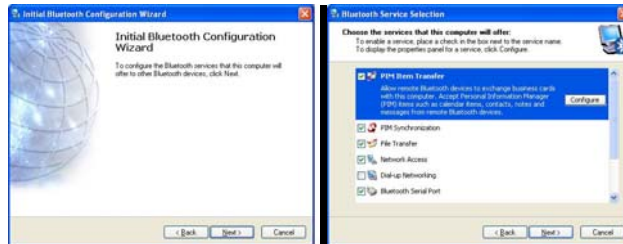
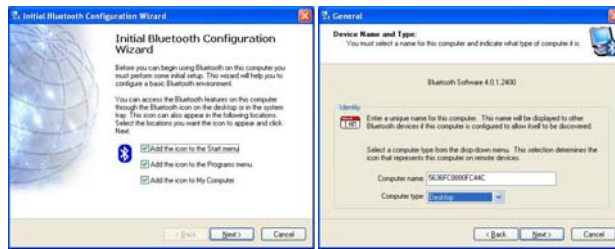
4. Follow the instructions on the screen and press “Next” and “I agree” to finish the software installation.



5. When you finish, you will find a “My Bluetooth Place” icon on the desktop or in the program folder.



- Follow the instructions on the screen and press “Next” to finish the software installation.



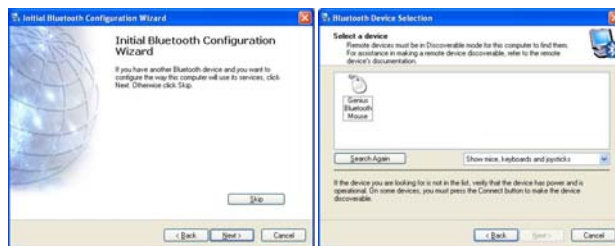
- Now press the connect button on the keyboard first, then press ‘Next’ to search for the keyboard device and click twice on the selected device (Genius Bluetooth Keyboard)



8. Type in the numbers shown on the screen through the keyboard to complete the keyboard connection.



9. Repeat Step 7 for mouse connection.

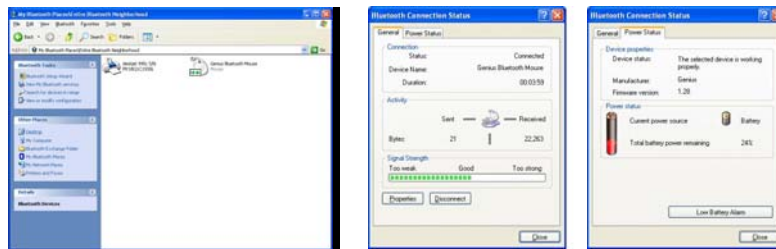


10. If the installation was successful, this window should appear.



Note:

1. If you want to check your Bluetooth mouse and keyboard status (signal or power), double click on the Genius Bluetooth mouse icon.

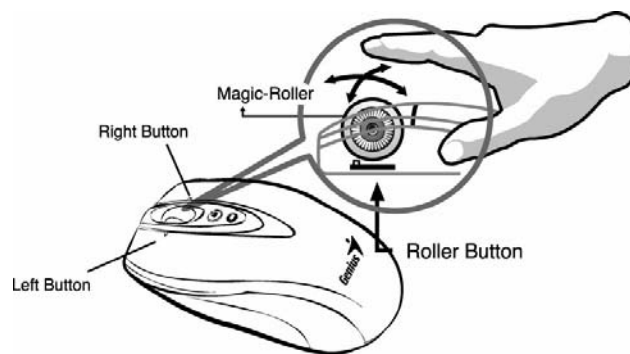


2. When the LED light on the Bluetooth device (keyboard or mouse) *flashes twice within one second when pairing* (it should be flashing once within one second normally), it indicates that battery power is insufficient, so replace with charged batteries.

## Charger and charging usage

1. The charger device can be used to recharge both AA and AAA batteries; **two batteries** must be charged simultaneously.
2. Make sure that only rechargeable batteries (NiMH-Nickle-Metal-Hydride) batteries are used and placed in the correct position.
3. For safety, the charger features a **recognition function** for alkaline batteries placed and/or when the batteries are not placed in the correct polarity direction; resulting in charger's LED Light to **blink between green and red** to indicate a warning.
4. The LED will be **red** in charging mode and **Green** when batteries are fully charged.
5. The Hub on the charger is designed for a dongle receiver or other USB accessories (such as mouse, flash memory stick)

## Mouse Factory Setting



## Keyboard hotkeys definition

1. Scrolling button: the function of mouse middle button
2. My computer: Open My Computer folder from Windows
3. Email: Open Mail function
4. WWW: Open browser in IE
5. Back: see last page when viewing the internet
6. Forward: Go to next page when b\viewing the internet
7. Sleep: Turn system into sleep mode
8. Calculator: Open calculator from Windows
9. Media: Open Media player program
10. Volume +: Turn the volume up
11. Play/Pause: Play/pause music or video from playing
12. Volume -: Turn the volume down
13. Stop: Stop music or video from playing





This device complies with Part 15 of the FCC rules, operation is subject to the following two conditions.

- (1) This device may not cause harmful interference and,
- (2) This device must accept any interference received, including interference that may cause undesired operation .

NOTE:

THE MANUFACTURER IS NOT RESPONSIBLE FOR ANY RADIO OR TV INTERFERENCE CAUSED BY UNAUTHORIZED MODIFICATIONS TO THIS EQUIPMENT. SUCH MODIFICATIONS COULD VOID THE USER' S AUTHORITY TO OPERATE THE EQUIPMENT