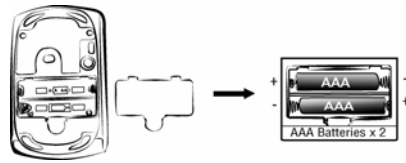


### Hardware Installation

1. Install two AAA batteries in the mouse.

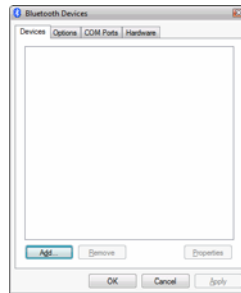


### Pairing Process in Vista and Windows XP SP2

1. Open the Windows control panel, then select "Bluetooth devices".



2. Click "Add....."

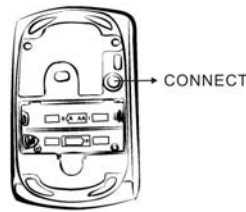


3. Select "My device is setup and ready to be found", then click "Next".

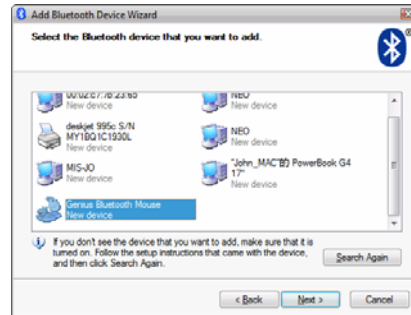


## ENGLISH

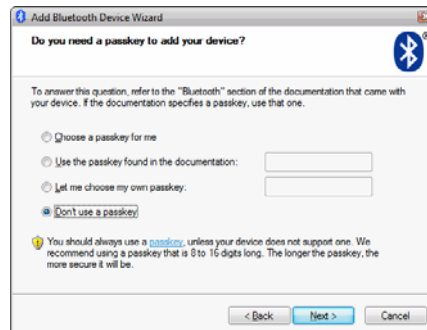
4. Press and hold the “CONNECT” button under the mouse.



5. In “Peripherals (Keyboards, mice, joysticks)”, select Genius Bluetooth Mouse and click “Next”.

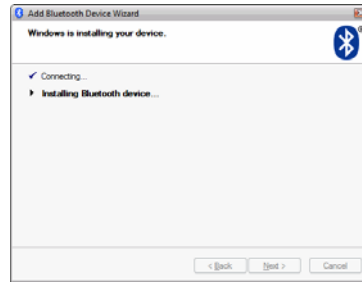


6. Select “Don’t use a passkey” and click “Next”.

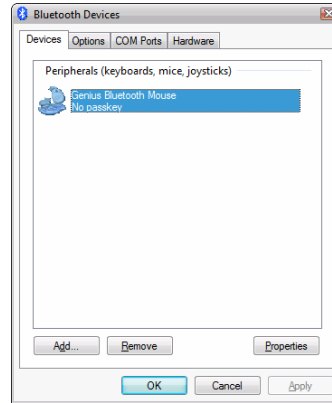


## ENGLISH

- Windows will start to connect the Genius Bluetooth Mouse automatically. Press the finish button after the connection process is completed.

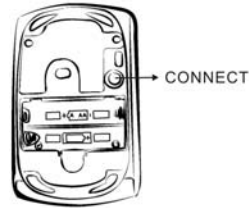


Once the connection between the Genius Bluetooth Mouse and your computer is established, the connection will be kept permanently. That means the connection will re-establish automatically each time you run Windows.



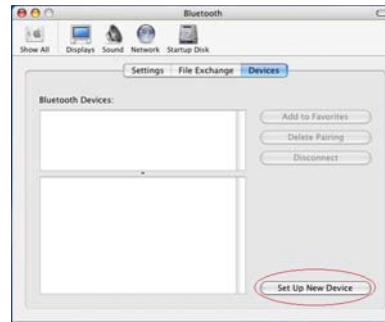
### Pairing Process in Mac OS X 10.2.6 or later

- Press and hold the "CONNECT" button under the mouse.

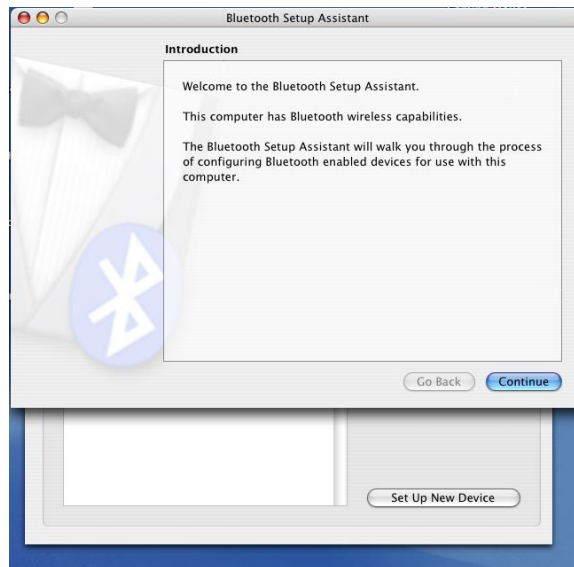


## ENGLISH

2. Click the Bluetooth icon on the task bar and select “Setup Bluetooth device”.



3. Click “Continue” when the “Bluetooth Setup Assistant” appears.

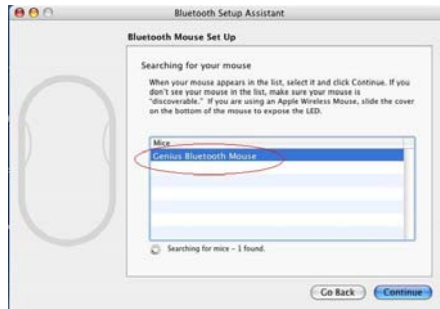


# ENGLISH

4. Choose “Mouse” and press “Continue” to the next step.



5. When Bluetooth finds the “Genius Bluetooth Mouse”, please press “Continue” to the next step.

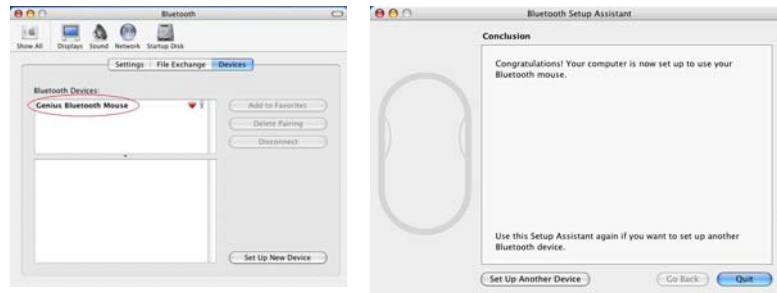


6. Click “Continue” when the “Passkey exchange with your mouse” appears.



## ENGLISH

- The connection is now successful and you can use your Genius Bluetooth Mouse.



Now you can use the Genius Bluetooth Mouse wirelessly with a Bluetooth enabled Apple computer. Afterwards, the connection of the Genius Bluetooth mouse will re-establish automatically each time Mac OS X runs.

### Software Installation (for 4D scrolling only)

- Make sure the mouse is connected to the computer.
- Put the CD driver into the CD drive.
- Follow the instructions on the screen to finish the software installation.

### Adjust dpi resolution

Press left and right button together for three seconds, the resolution will switch from 1600 to 800 dpi. Press both buttons again for three seconds and it will revert to 1600 dpi. The LED flash is shorter for 800 dpi.

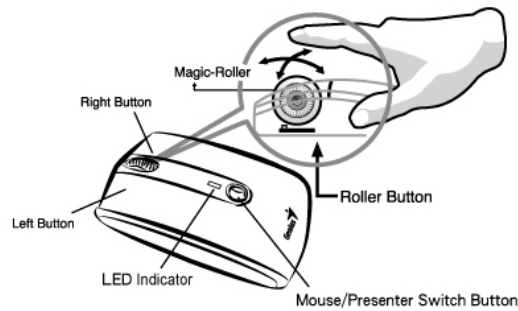


## Note:

1. **Class 1 Laser Product. Passed eye-safety regulation (IEC 60825-1)**
2. **Class 2 Laser Product. The last pointer is dangerous to eyes! Do not stare into the beam, and be sure to avoid any child using the pointer.**

## Factory Setting

Use “Switch Button” to switch from “**Mouse mode**” and “**Presenter mode**” for different functions. LED flash will show you which mode is now. When LED in “**BLUE**” is in Mouse mode and LED in “**RED**” is in Presenter mode.



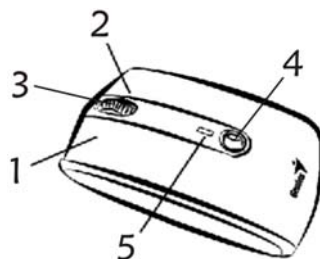
### In Mouse mode:

1. **Left Button:** Provides traditional mouse functions like click, double click and drag.
2. **Right Button:** Provides traditional mouse click functions.
3. **Magic-Roller:** Press the “Magic-Roller” to surf the Internet and Windows documents.

## ENGLISH

**Horizontal Scroll:** Press the roller to the left and the cursor scrolls to the left; press the roller to the right and the cursor scrolls to the right.

4. **Switch Button:** To switch from Mode-1(Mouse) or Mode-2(Presenter) function.
5. **LED indicator:** If your battery power is low, the LED will brighten. When LED in “BLUE” is in Mouse mode.



### In Presenter Mode:

1. **Left Button:** Next page when you are in PowerPoint.
2. **Right Button:** previous page when you are in PowerPoint.
3. **Magic-Roller:** Press the “Magic-Roller” to use laser point.



**Horizontal Scroll:** Press the roller to the right is F5 (like keyboard function) for play PowerPoint in your presentation. Press the roller to the left is ESC.

4. **Switch Button:** To switch from Mode-1(Mouse) or Mode-2(Presenter) function.
5. **LED indicator:** If your battery power is low, the LED will brighten. When LED in “Red” is in Presenter mode.



## ENGLISH

### Button Function:

Button	Mouse mode	Presenter mode
1	Left Button	Next page
2	Right Button	Previous page
3	Magic-Roller	Laser On/Off
	Horizontal Scroll	Scroll right: F5
		Scroll left: ESC
4	Mode switch	Mode switch
5	LED indicator in blue	LED indicator in red

This device complies with Part 15 of the FCC rules, operation is subject to the following two conditions.

- (1) This device may not cause harmful interference and,
- (2) This device must accept any interference received, including interference that may cause undesired operation .

NOTE:

THE MANUFACTURER IS NOT RESPONSIBLE FOR ANY RADIO OR TV INTERFERENCE CAUSED BY UNAUTHORIZED MODIFICATIONS TO THIS EQUIPMENT. SUCH MODIFICATIONS COULD VOID THE USER' S AUTHORITY TO OPERATE THE EQUIPMENT