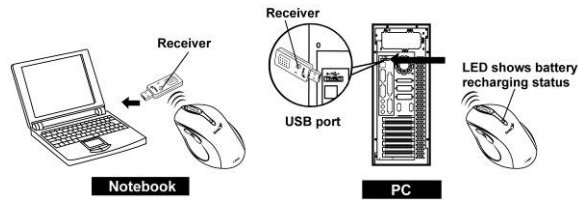
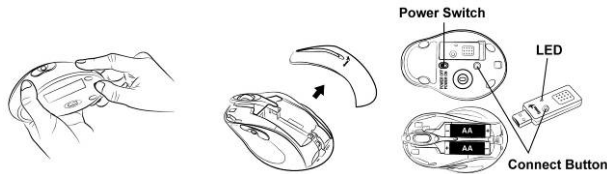


Hardware Installation

1. You can connect the receiver to a USB port of a PC or Notebook.




2. Install the enclosed two AA batteries as directed
3. Turn on your computer
4. The channel setting is factory preset. Please try on the mouse after complete above procedures; if it is not working; Please re-connect by pressing the button on the receiver first and observe for flash light and press connect button underneath the mouse, then receiver will be lit and off when connection is confirmed.



Software Installation

1. Make sure the mouse is connected to the computer
2. Place the setup disk (CD driver) into a DVD/CD Rom drive
3. Follow the instruction on the screen to complete the software installation

Warning (Trouble shooting)

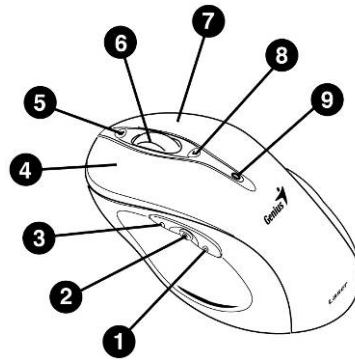
1. Please do not use the wireless laser out on a desk that is made of glass or mirror
2. Although that the mouse has granted the eye safety certification, it is strongly suggested that a direct eye contact with the laser lens should be avoid.
3. The wireless laser mouser gives you free movement and an enjoyable wireless experience. For Optimal performance, place the receiver at least 8 inches (20cm) away from the mouse device.
4. For “HELP: of the Genius driver, please double  click the icon right hand side.

Mouse button definition:

1. **Smart-search button** Using the mouse to mark “key words” and press the button for fast access to open Yahoo, Google webpage or your PC system(Yahoo is the default webpage, you can change it in ioCentre software). All the information or files you searched will be listed.
2. **Flip 3D button** Provides fast access to scan all open windows in one easy view.
3. **Zoom in/out button** Press this button, then scroll the middle button. Scrolling up is “Zoom-in” and scrolling down is “Zoom-out”. Press the button again to release the function.

ENGLISH

4. **Left Button** Provides traditional mouse functions such as click, double click and drag.
5. **Turbo roller button** Provides quick roller- up
6. **Roller button/Middle button** Scroll the button to surf the Internet and Windows documents.
7. **Right button** Provides traditional mouse click function
8. **Turbo roller button** Provides quick roller down
9. **Battery low indicator** The LED will be lit /flash when battery power is low.



10. FCC Notices

This device complies with Part 15 of the FCC Rules. Operation is subject to the following two conditions:

- (1) This device may not cause harmful interference
- (2) This device must accept any interference received, including interference that may cause undesired operation.

CAUTION: Change or modification not expressly approved by the party responsible for compliance could void the user's authority to operate this equipment.