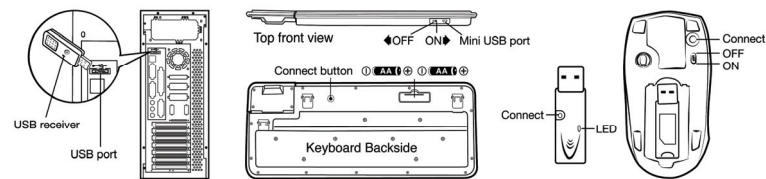


Introduction

SlimStar 820 Solargizer is a keyboard kit designed to comply with green environment by transforming solar energy into wireless keyboard operation and using power saving technology on the mouse to reduce the frequent replacement of batteries.

Hardware Installation

1. Connect the dongle receiver to a USB port of your PC.
2. Connect the enclosed USB cable charger to your PC and keyboard to charge the keyboard before you begin operation.
3. Insert two AA batteries each into the keyboard (Optional when start up with USB charger) and mouse; making sure that the polarity is correct.
4. Make sure the power switch is set to ON.



Important:

1. Please start up the keyboard with the USB cable charger.
2. When fully charged and working under an environment with no light absorption, the capacitors embedded within the keyboard will supply enough power for continuous operation for approximately five hours.

3. The batteries enclosed are used for back up power ONLY, when working under a limited or no light source environment. (You can auto switch to battery supply (ON/OFF switch) when capacitors are do not have enough power)
4. When using the USB cable charger, the LED light on the keyboard will be ON; and OFF when fully charged. It takes approximately 10 minutes to get the capacitors charged.
5. Although the mouse has been granted eye safety certification, we strongly suggest you avoid direct eye contact with the laser lens.

Software Installation

1. Make sure that the mouse and keyboard are connected to the PC properly
2. Put the CD driver into the disc drive
3. Follow the instructions on the screen to complete the software installation

Replacing batteries

The mouse is equipped with a low battery indicator, batteries at low charge result in a constant lit LED when using the mouse, so you need to replace the batteries immediately.

ID Channel Setting

The channel ID is factory preset. The green LED (data transmission indicator) will be lit constantly when the wireless device is in normal operation. In case your wireless devices do not work, please reset the ID channel by:

1. Press the connect button on the receiver and the LED will be blinking for connection.
2. Press the connect button of the wireless device once within 20 seconds and observe if the LED light on the receiver has gone off. If yes, it means the wireless device is ready for use.

Warning (Trouble shooting)

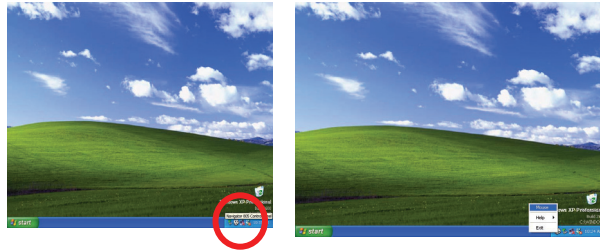
1. In case the wireless device was not connected when you set the ID channel setting, check if you have installed the batteries with the positive (+) and negative (-) polarity in the correct position, then repeat the ID channel setting again.
2. For optimum performance, please make sure that the distance between the wireless device and the dongle receiver does not exceed 10M.

Cleaning on keyboard's solar device

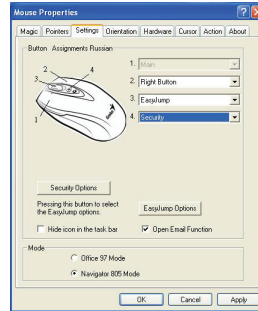
1. To clean the solar bezel, please use only silk or cotton materials and gently wipe this area.


Security Function Setting:

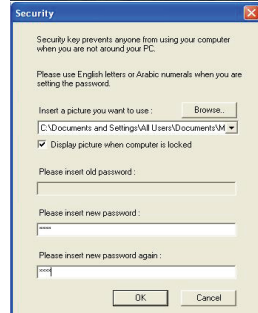
1. After you install the software driver, please click the mouse icon on the task bar and select "Mouse".




2. Click "Settings" when the Mouse Properties appears up and click "Security Options".
3. Choose a picture from your images to display when the computer is locked. Also set your password to unlock the computer. Then, press "OK", and the security setting will be finished.
4. If you want to start the security function,

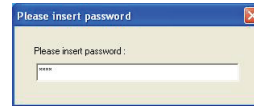


just press "  ", and the picture you set pop up to hide the screen. For security, the mouse and keyboard won't work.

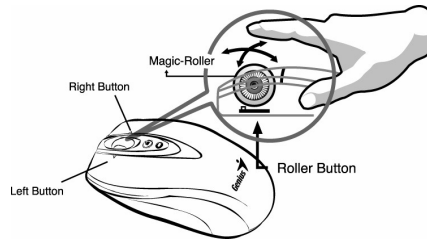


5. If you want to unlock this function, just

press “” again, and install your password.

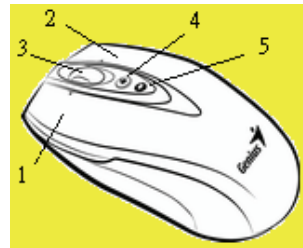


Mouse Factory Setting



Button Assignments

1. **Left Button:** Provides traditional mouse functions like click, double click and drag.
2. **Right Button:** You can assign this button to frequently used keyboard and mouse functions in addition to features like Easy Jump, Auto-Panning, Zoom, etc.
3. **Magic-Roller:** Press the “Magic-Roller” to surf the Internet and Windows documents. **Horizontal Scroll:** Press the roller to the left and the cursor scrolls to the left; press the roller to the right and the cursor scrolls to the right.
4. **Security:** Lock your screen, mouse and keyboard unless you install the password.
5. **Power indicator:** If your battery power is low, the LED will brighten.



Keyboard Features



1. Media Player: Activate Media Player function
2. Stop: Stop playing music or video sources
3. Mute: Remove sound
4. Play/Pause: Play/Pause the music or video sources
5. Volume Up: Increase volume level
6. Volume Down: Decrease volume level
7. Word: Open office Word feature
8. Excel: Open office Excel feature
9. Power point: Open Power Point feature
10. MSN: Activate Internet conversational tools such MSN messenger, ICQ, Windows messenger, Skype, etc
11. Refresh: Refresh the Internet pages
12. Internet Explorer: Open browser in Netscape or IE
13. Mail: Activate email feature

14. Copy: Activate copy function
15. Paste: Activate paste function
16. Save: Activate save function
17. Print: Activate Print function

Notes on Battery Usage:

- Different battery types and surrounding temperatures may affect the battery performance.
- Avoid using batteries in extremely cold environments as low temperatures can shorten the battery life and reduce wireless device performance.
- If you are using the new rechargeable battery or rechargeable battery that has not been used for an extended period of time (batteries that pass the expiry date are exceptions) might affect the number of pictures that can be taken. Therefore, to maximize their performance and lifetime, we recommend that you fully charge the batteries and discharge them for at least one complete cycle before use.
- The battery may feel warm when using the wireless device for an extended period of time or using the flash continuously. This is normal and not a malfunction.
- The wireless device may feel warm when being used continuously or for an extended period of time. This is normal and not a malfunction.
- If you will not be using the batteries for an extended period of time, remove them from the wireless device to prevent leakage or corrosion.
- Always keep the terminals in a clean state.
- Never use manganese batteries.
- Risk of explosion if battery is replaced by an incorrect type.
- Dispose of used batteries according to the instructions.

FCC RF Radiation Exposure Statement: This equipment complies with FCC RF radiation exposure limits set forth for an uncontrolled environment. This device and its antenna must not be co-located or operating in conjunction with any other antenna or transmitter.

This device complies with Part 15 of the FCC Rules. Operation is subject to the following two conditions:

- (1) This device may not cause harmful interference.
- (2) This device must accept any interference received, including interference that may cause undesired operation.

Per FCC 15.21 you are cautioned that changes or modifications not expressly approved by the part responsible for compliance could void the user's authority to operate the equipment.

This equipment has been tested and found to comply with the limits for a class B digital device, pursuant to part 15 of the FCC Rules. These limits are designed to provide reasonable protection against harmful interference in a residential installation. This equipment generates, uses and can radiate radio frequency energy and, if not installed and used in accordance with the instructions, may cause harmful interference to radio communications. However, there is no guarantee that interference will not occur in a particular installation. If this equipment does cause harmful interference to radio or television reception, which can be determined by turning the equipment off and on, the user is encouraged to try to correct the interference by one or more of the following measures:---Reorient or relocate the receiving antenna.---Increase the separation between the equipment and receiver.---Connect the equipment into an outlet on a circuit different from that to which the receiver is connected.---Consult the dealer or an experienced radio/TV technician for help.