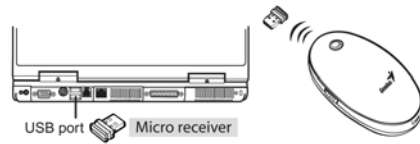
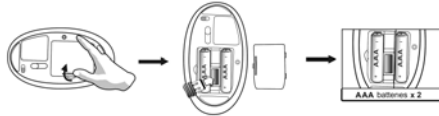


Hardware Installation

1. You can connect the receiver to a USB port of a PC.



2. install two AA batteries in the mouse.



3. Turn on your computer. The mouse can now work.

Software Installation

1. Make sure the mouse is connected to the computer.
2. Put the CD driver into the CD drive.
3. Follow the instructions on the screen to finish the software installation.

Warning: (Troubleshooting)

1. Please do not use wireless laser mouse on a desk, which is made of glass or mirror.
2. The wireless laser mouse automatically selects the channel for your mouse.
3. If you feel the mouse does not move smooth as usual, please check the battery indicator on the mouse. If the batteries have lost their charge, replace them. Remember do not put the batteries in the wrong direction.

Note : Class 1 Laser Product. Passed eye-safety regulation.(IEC 60825-1)

Button Assignments

1. Press the side button as indicated and gently slide your finger over the crystal sensing area of the OptoWheel to activate the turbo scroll function and release the side button to disable.
2. **Left Button:** Provides traditional mouse functions such as click, double click and drag.
3. **8 way scroll function or Middle button:** Gently slide your finger over the OptoWheel to scroll in eight different directions to surf the Internet and Windows documents or press the OptoWheel down to activate the middle button function.
4. **Right button:** Provides traditional mouse click function



Note: Adjust dpi resolution

Press left and right button together for three seconds, the resolution will switch from 1600 to 800 dpi. Press both buttons again for three seconds and it will revert to 1600 dpi. The LED flash is shorter for 800 dpi.



FEDERAL COMMUNICATIONS COMMISSION INTERFERENCE STATEMENT

This equipment has been tested and found to comply with the limits for a Class B digital device, pursuant to Part 15 of the FCC Rules. These limits are designed to provide reasonable protection against harmful interference in a residential installation. This equipment generates, uses and can radiate radio frequency energy and, if not installed and used in accordance with the instructions, may cause harmful interference to radio communications. However, there is no guarantee that interference will not occur in a particular installation. If this equipment does cause harmful interference to radio or television reception, which can be determined by turning the equipment off and on, the user is encouraged to try to correct the interference by one or more of the following measures:

- Reorient or relocate the receiving antenna.
- Increase the separation between the equipment and receiver.
- Connect the equipment into an outlet on a circuit different from that to which the receiver is connected.
- Consult the dealer or an experienced radio/TV technician for help.

CAUTION:

Any changes or modifications not expressly approved by the party responsible for compliance could void the user's authority to operate the equipment.

This device complies with Part 15 of the FCC Rules. Operation is subject to the following two conditions:

- (1) This device may not cause harmful interference and
- (2) This device must accept any interference received, including interference that may cause undesired operation.