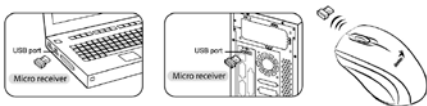


Hardware Installation

Note: Supports Windows 7/Vista/XP/2000

1. You can connect the receiver to a USB port of a PC.



2. Install one AA battery in the mouse.



3. Turn on your computer. The mouse can now work.

Warning: (Troubleshooting)

1. Do not use the wireless optical/laser mouse on a desk which is made of glass or mirror.
2. The connection of the wireless device is **factory preset**, so when you plug the USB receiver into any USB port, the connection between the micro receiver and the mouse **will**

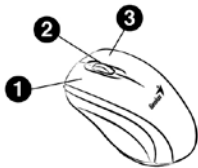
English

be established automatically.

3. In case your PC did not install the hardware successfully, remove the micro receiver from the USB port and go **Human Interface Devices** under **Device Manager** to remove the mouse then plug in the micro receiver to a USB port again.
4. If you feel the mouse does not move smooth as usual, it is possible the batteries have lost their charge so you need to replace them. Remember to put the batteries in the correct direction.

Factory Settings

1. **Left Button:** Provides traditional mouse functions like click, double click and drag.
2. **Magic-Roller:** Press the “Magic-Roller” to surf the Internet and Windows documents.
3. **Right Button:** Provides traditional mouse click functions



English

Note:

Changes or modifications not expressly approved by the party responsible for compliance could void the user's authority to operate the equipment. (15.21)

This device complies with part 15 of the FCC Rules. Operation is subject to the following two conditions: (1) This device may not cause harmful interference, and (2) this device must accept any interference received, including interference that may cause undesired operation.(15.19(a)(3))

This equipment has been tested and found to comply with the limits for a Class B digital device, pursuant to Part 15 of the FCC Rules. These limits are designed to provide reasonable protection against harmful interference in a residential installation. This equipment generates, uses and can radiate radio frequency energy and, if not installed and used in accordance with the instructions, may cause harmful interference to radio communications.

However, there is no guarantee that interference will not occur in a particular installation.

If this equipment does cause harmful interference to radio or television reception, which can be determined by turning the

English

equipment off and on, the user is encouraged to try to correct the interference by one or more of the following measures:

- Reorient or relocate the receiving antenna.
- Increase the separation between the equipment and receiver.
- Connect the equipment into an outlet on a circuit different from that to which the receiver is connected.
- Consult the dealer or an experienced radio/TV technician for help.