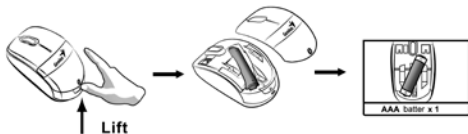


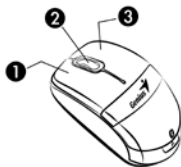
## Hardware Installation

1. Install one AA battery in the mouse.



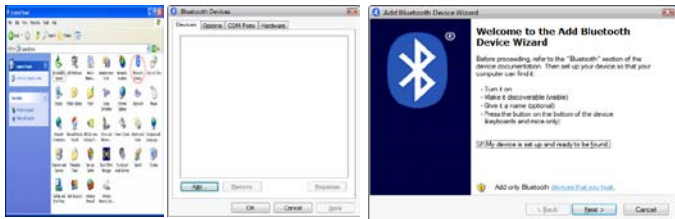
## Factory Settings

1. **Left Button:** Provides traditional mouse functions: double click and drag.
2. **Magic-Roller:** Press the “Magic-Roller” to scroll through Windows documents.
3. **Right Button:** Provides traditional mouse functions.



## Pairing Process in Windows 7, Vista and Windows XP SP2

1. Open the Windows control panel, then select “Bluetooth devices”.
2. Click “Add....”
3. Select “My device is setup and ready to be found”, then click “Next”.



4. Press and hold the “CONNECT” button under the mouse.
5. In “Peripherals (Keyboards, mice, joysticks)”, select Genius Bluetooth Mouse and click “Next”.
6. Select “Don’t use a passkey” and click “Next”.
7. Windows will start to connect the Genius Bluetooth Mouse automatically. Press the finish button after the connection process is completed.



Once the connection between the Genius Bluetooth Mouse and your computer is established, the connection will be kept permanently. That means the connection will re-establish automatically each time you run Windows.

### Pairing Process in Mac OS X 10.2.8 or later

1. Press and hold the “CONNECT” button under the mouse.
2. Click the Bluetooth icon on the task bar and select “Setup Bluetooth device”.
3. Click “Continue” when the “Bluetooth Setup Assistant” appears.
4. Choose “Mouse” and press “Continue” to the next step.
5. When Bluetooth finds the “Genius Bluetooth Mouse”, please press “Continue” to the next step.
6. Click “Continue” when the “Passkey exchange with your mouse” appears.
7. The connection is now successful and you can use your Genius Bluetooth Mouse.

Now you can use the Genius Bluetooth Mouse wirelessly with a Bluetooth enabled Apple computer. Afterwards, the connection of the Genius Bluetooth mouse will re-establish automatically each time Mac OS X runs.

#### Note:

Changes or modifications not expressly approved by the party responsible for compliance could void the user's authority to operate the equipment. (15.21)

This device complies with part 15 of the FCC Rules. Operation is subject to the following two conditions: (1) This device may not cause harmful interference, and (2) this device must accept any interference received, including interference that may cause undesired operation.(15.19(a)(3))