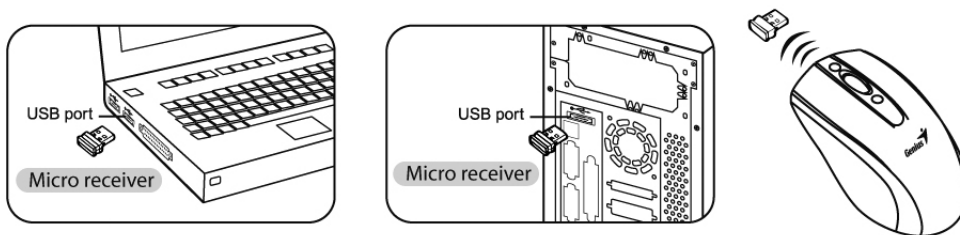


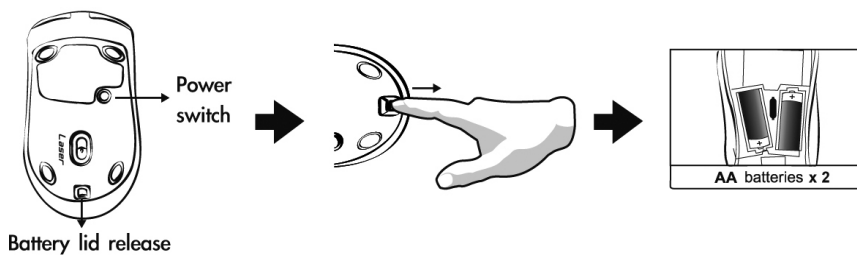
## Hardware Installation

*Note: Supports Windows 7/Vista/XP/2000*

1. You can connect the receiver to a USB port of a PC.



2. Install two AA batteries in the mouse.



3. Turn on your computer. The mouse can now work.

### **Warning: (Troubleshooting)**

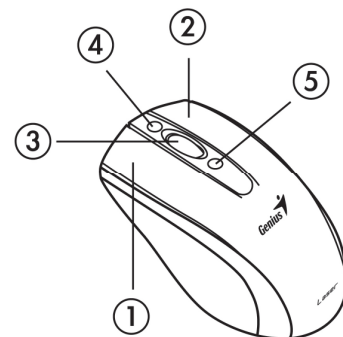
1. Do not use the wireless optical/laser mouse on a desk which is made of glass or mirror.
2. The connection of the wireless device is **factory preset**, so when you plug the USB receiver into any USB port, the connection between the micro receiver and the mouse **will be established automatically**.

## English

3. If you feel the mouse does not move smooth as usual, it is possible the batteries have lost their charge so you need to replace them. Remember to put the batteries in the correct direction.
4. In case your mouse connection has been accidentally lost, a ‘Binding File’ is available on the Genius website. Go to [www.genisunet.com](http://www.genisunet.com), select “Service & Support”, “Drivers” to down load the driver, and double click on the file for the product you purchased, and the wireless connection will be re-established.

### Mouse Button Assignments

1. **Left Button:** Provides traditional mouse functions like click, double click and drag.
2. **Right Button:** Provides traditional mouse click function
3. **Magic-Roller:** Scroll the button to surf the Internet and Windows documents.
4. **Turbo scroll button:** Provides quick roller up.
5. **Turbo scroll button:** Provides quick roller down.



Note:

Changes or modifications not expressly approved by the party responsible for compliance could void the user's authority to operate the equipment.  
(15.21)

This device complies with part 15 of the FCC Rules. Operation is subject to the following two conditions: (1) This device may not cause harmful interference, and (2) this device must accept any interference received, including interference that may cause undesired operation.(15.19(a)(3))