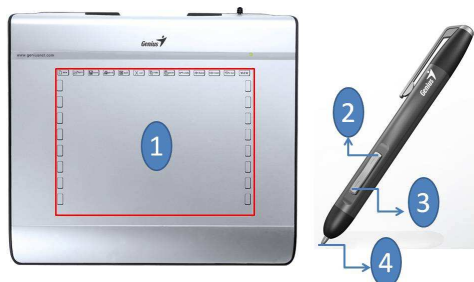


## GENIUS GRAPHIC TABLET QUICK INSTALLATION GUIDE

**CAUTION: PLEASE INSERT THE DRIVER CD INTO YOUR COMPUTER FIRST AND THEN FOLLOW THE INSTRUCTIONS TO COMPLETE YOUR SETUP PROCESS.**

### INTRODUCTION



- 1. Working area
- 2. Button 2
- 3. Button 1
- 4. Pen tip

### DRIVER INSTALLATION

#### Windows:

1. Insert the driver disc into your computer's CD-ROM drive. When prompted, select "Driver Setup", and press OK to install driver.

**Note:** In most systems, the Setup Wizard will start automatically. If Automatic Setup does not begin, start the Setup program manually by selecting "Start/Run", type "E:\setup", where "E:" represents the location of the CD-ROM drive, then press "Enter".

**Note:** In certain cases, Windows might ask for your permission because it cannot recognize the driver you are downloading. If this occurs, select "Continue Anyway" and continue to install.

2. Please insert the driver CD into your computer first and then follow the instructions to complete your setup process.

#### Macintosh:

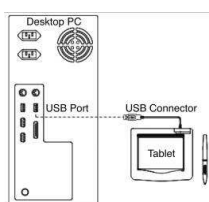
1. Insert the driver disc into your computer's CD-ROM drive.
2. Check to see if the "Genius Tablet" is shown on the screen. Double click the icon then follow the instruction.
3. Enter your administrator name and password to process the next step till it's finished.

**Note:** For more information, refer to the MAC user manual on the driver disc.

**CAUTION: ONCE THE INSTALLATION HAS BEEN COMPLETED, REBOOT YOUR MACINTOSH BEFORE PLUGGING THE DEVICE INTO YOUR COMPUTER.**

### HARDWARE INSTALLATION

**CAUTION: MAKE SURE THAT YOU HAVE INSTALLED THE DRIVER SOFTWARE (SEE ABOVE) INTO YOUR COMPUTER BEFORE INSTALLING THE HARDWARE.**




1. Plug the Graphic Tablet USB cable into your computer's USB port (located on the computer, display, or keyboard). The Graphic Tablet's LED light will indicate the operational status, and your computer screen will display a "found new hardware" message.

**VERIFYING THE INSTALLATION**

To ensure that everything has been installed properly, please follow the procedures below. Check the User’s manual on the CD-ROM for more information.

**VERIFYING HARDWARE AND DRIVER FUNCTIONS**

The LED light on the Tablet Plate is the main indicator for hardware operation. The light normally stays off, and will come on and off in response to various conditions. Watch the status of the Tablet Plate LED light as you go through these steps. None of the tests, except the last two, require the tablet driver to be installed.

1. For the cordless pen (stylus) or the wireless mouse , tap on any surface or press the left button of the mouse to “wake it up”, in case the pen or the mouse has gone to "sleep" after it is not used for a few minutes.
2. As soon as the Tablet Plate receives power, the LED light will come on briefly, and will normally stay off.
3. When the working area (Plate) detects the presence of the pen, the LED light will flash slowly. This happens when the pen tip is directly above the working area of the tablet plate and is low enough.
4. When you press a button on the body of the pen or the mouse, the LED light will come on.
5. When you press the pen tip against the tablet plate anywhere in the working area, the light will also come on.
6. If the tablet driver has been properly installed, a small tablet icon (  ) will appear in system Task Bar area, normally at the lower right corner of the screen.
7. With the tablet driver properly installed, moving the pen tip or the mouse over the working area will cause the cursor on the screen to move accordingly.

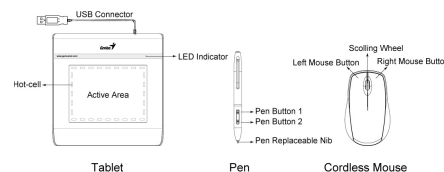
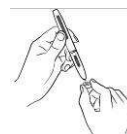


Figure 1 Tablet Plate components

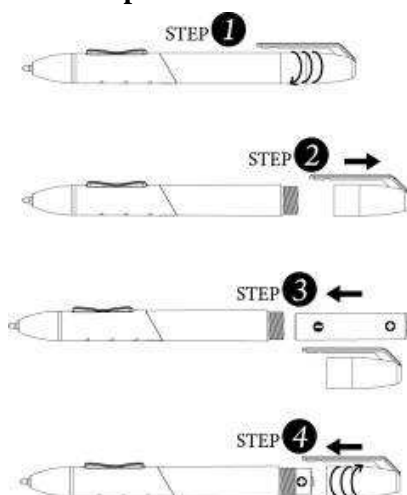
**TO CHANGE THE PEN TIP**

1. Place the Pen tip into the tip remover.
2. Simply pull the Pen up, and then insert a new tip.



**Note:** Pliers (not included in package) may also be used to remove the pen tip.

**To replace the Tablet Pen battery:**



- (1) Twist the pen cap.
- (2) Pull the pen cap to open it.
- (3) Put one AAA battery into the pen.
- (4) Twist the pen cap back on the pen.

**Note:** Changes or modifications not expressly approved by the party responsible for compliance could void the user's authority to operate the equipment. (15.21)

This device complies with part 15 of the FCC Rules. Operation is subject to the following two conditions: (1) This device may not cause harmful interference, and (2) this device must accept any interference received, including interference that may cause undesired operation.(15.19(a)(3))