



EasyPen M406W

User Manual

For Windows 7/Vista/XP

***The driver may already be updated to a newer version before/after packaging. If your installation screen does not match the contents of this manual, you may need to download the driver, just refer to your software screen after installation.**

I. General Information

1. Overview

Welcome to the world of tablet and digital pen! You are able to discover how easy to control your personal computer by using a wireless digital pen to instead of a mouse:

The function of the digital pen is able to draw a line very thin, thick, light or dark (called pressure sensitivity). You also can write, sign, annotate documents, and draw, sketch or paint as easily as you would on normal paper and simulate the functions like pencil, mark pen, brush, or watercolor pen by using the commercial software packages such as Adobe® PhotoShop™, Corel® Painter™ and Paint Shop™. If MSN Messenger 8.5 or newer is installed, you create and send digital handwritings and hand drawn pictures, making communication much more fun and entertaining.

Note: If you cannot enable the handwriting mode in MSN Messenger, download the relevant handwriting component from Microsoft's website.

2. Pen Tablet Functions

After installing the device driver, your pen tablet features has the following functions:

- 2.1. Direct pointing – You can move the cursor to any location on the screen by hovering the digital pen tip over the tablet' s surface.
- 2.2, Three-buttons mouse commands - Your pen tablet provides all functions of a three- buttons' mouse by using its pen tip and two buttons.
- 2.3. Pen scrolling – You can scroll documents and Web pages by pressing the middle button of the digital pen over the tablet' s working area.
- 2.4. Pressure sensitivity – This feature allows you to emulate various brushes and pencils and you can press down the pen tip harder, lighter, stronger or thicker, and subtle pencil lines you will receive.

3. System Requirements

- **Windows 7/XP/Vista**
- **USB port**
- **DVD-ROM drive**

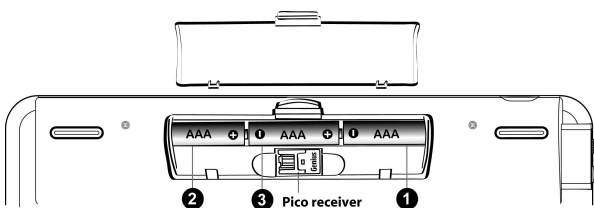
4. Driver Installations

For Microsoft Windows7, XP and Vista operating systems:

- 4.1. Insert the Driver CD into the CD-ROM drive, and wait for the main installation screen to appear.
- 4.2. The main installation screen should appear automatically, or you can manually start the installation by opening **【My Computer】** ▶ **【CD/DVD Rom】** ▶ then click on the **【Setup】** program.
- 4.3. When installing the driver, follow the installation instructions on screen and press the “ Enter” key.

After the installation has completed, reboot the computer.

5. Hardware Installations



5.1. Put the batteries into the back of the wireless tablet:


5.1.1. Put two batteries on each side of the battery slot.

5.1.2. Put the third battery into the middle..

★ **Do not mix or use different types of batteries at the same time such as LI-Ion, Alkaline, etc; and remember do not put the batteries in the wrong direction.**

5.2. Connect the dongle to your USB port (as shown).

5.3. Turn on the wireless tablet.

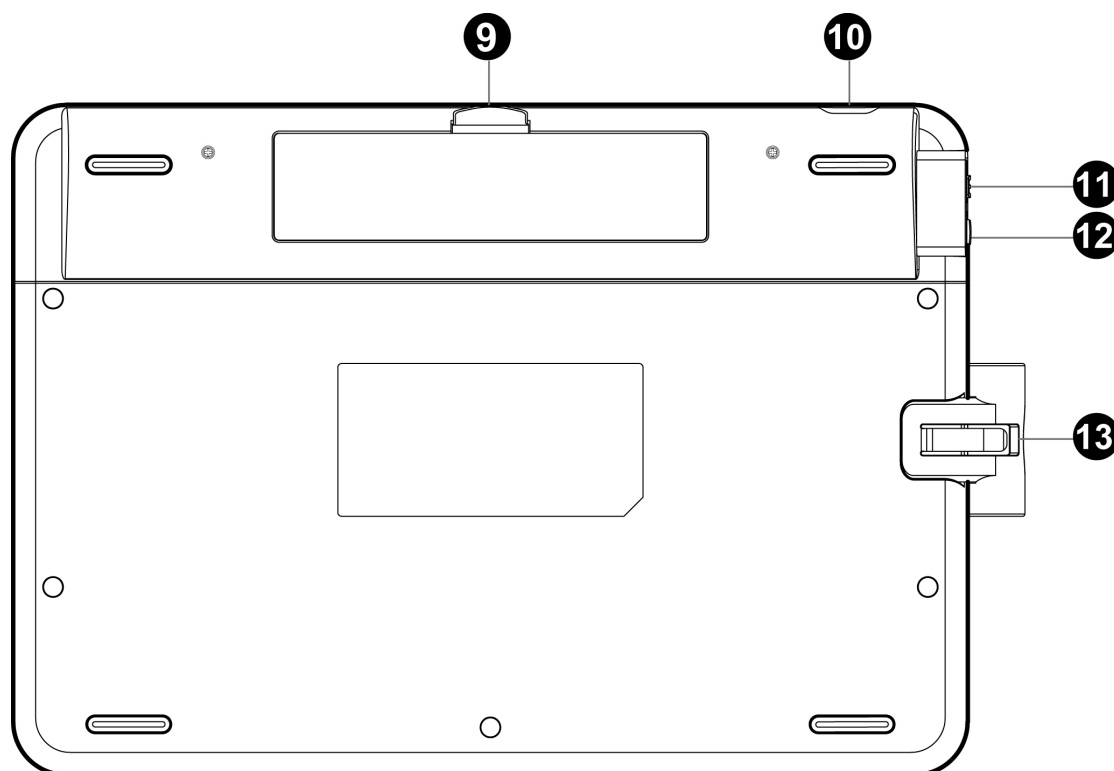
5.4. After you connect a pen tablet into the PC, you will see a small tablet icon () appear in the system tray, which is normally at the lower right corner of the screen.

★ **Install your driver first, then connect your dongle to the USB port. This will avoid any driver installation error or delay while the system is detecting new hardware**

6. Verifying Hardware and Driver Functions

Follow these steps to verify if the wireless tablet is installed properly:






- 1 — LED Indicator
- 2 — Express Key
- 3 — Digital Pen clip
- 4 — Working Area
- 5 — Button 2
- 6 — Button 1
- 7 — Pen tip
- 8 — Dongle
- 9 — Dongle and battery slot
- 10 — USB Port (for charging only)
- 11 — Power switch
- 12 — Resume button
- 13 — Pen clip slot

6.1. After you reboot your computer, move the cordless pen to make sure the cursor shown on the screen is moving.

6.2. The green LED light on the wireless tablet is the main indicator for hardware operation and depending on your pen wireless tablet model may be located at a different place that shown in the above diagram. This LED normally stays off, and will only turn on or off in response to various conditions. Watch the state of the LED on the wireless tablet as you go through these test steps:

6.2.1. Tap on any surface with the tip of the pen to start working if it has gone into standby mode. A built-in power saving function may have forced the pen into standby mode if it is not used within five minutes..

- 6.2.2. Press any express key on the tablet to “wake it up” if it has gone into sleep mode. A built-in power saving function may have forced the pen into sleep mode if it is not used after five minutes.
- 6.2.3. Turn the power on the wireless tablet, the LED will be lit briefly for three seconds, then will stay off, now the wireless tablet is in work mode.
- 6.2.4. When the wireless tablet detects the presence of the digital pen, the LED will stay on. This happens either when pen tip is hovering or within the working area which above the wireless tablet.
- 6.2.5. When you press a button on the pen barrel, the LED will light up.
- 6.2.6. Hovering and moving the pen in the working area will cause the cursor on the screen to move accordingly.
- 6.2.7. Press the Resume button for three seconds to put the wireless tablet in sleep mode. You can press the Resume button or any express key on the tablet to “wake it up” from sleep mode to work mode.

★ **Note: After the Wireless tablet’s device driver has been properly installed, a small tablet icon () will appear in the system tray, which is normally at the lower right corner of the screen.**

7. Usage Tips

7.1 Tapping before you use the digital pen

Before you use the digital pen, tap the pen on any surface of the tablet to start working from standby mode.

7.2 Pressing resume button or express key before you use the digital pen

If you have not used the digital pen for five minutes, press the Resume button or any express key on the tablet to “wake” it up from the sleep mode to work mode.

7.3 Double tapping

When you double tap with the digital pen (equivalent to a double click with a mouse), try to keep the pen tip away from the tablet’s surface, or at least try to lift the pen tip as fast as possible before the second tap.

7.4 Storing the digital pen

To store the pen, make sure the pen tip does not touch anything, and especially do not let the pen stand in a cup or penholder with the tip down. Place the pen in a penholder, or turn the pen tip pointing upward or horizontally with the pen tip free of any pressure by other objects.

7.5 Scrolling function of digital pen


The digital pen has the same function as a normal mouse when scrolling pages. Press the first button of the digital pen (same function as the mouse middle button) over the tablet’s working area.

7.6 Using a pen without a mouse

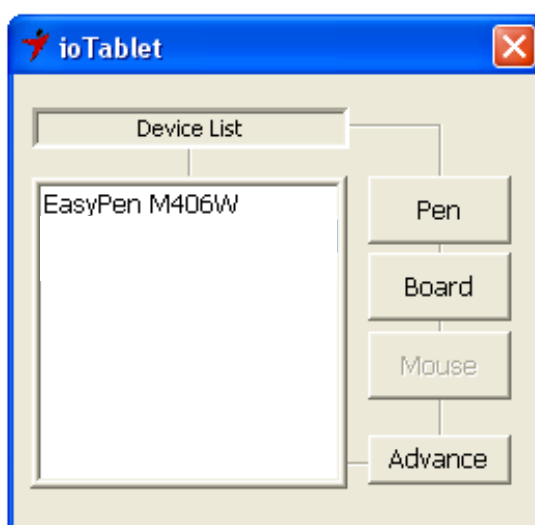
You may install the digital pen, digital mouse, and a regular mouse in your computer at the same time and you can also remove them to a different computer as well. However, only one device is able to work at a time.

★ **Note: Do not use more than two devices at the same time in case the screen cursor is jittering or not moving.**

II. Pen tablet configuration

You may configure the pen tablet by modifying the functions of the pen tip and the two barrel buttons. Tap **[Start] > [All programs] > [io Tablet]**, and double-tap the **[io Tablet ) in the system tray, usually located at the lower right corner of the screen. You may also adjust the pressure sensitivity of the pen by determining the scope of the tablet's working area, or (re-) program the hot-cells of your pen tablet by modifying device driver.**

1. **The Info Tab:** The Info tab displays the devices you can choose to operate your tablet, including the pen, the tablet itself and any interface language.

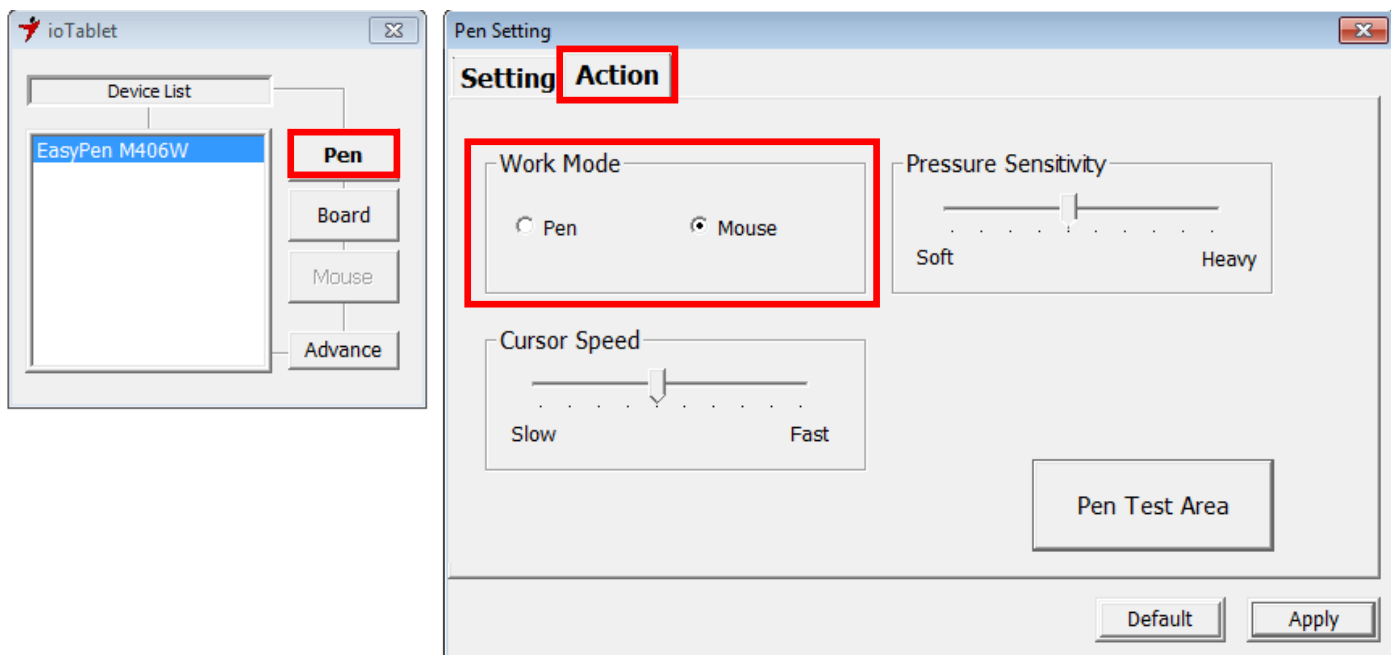


- After the tablet driver is installed in Windows, the Tablet PC function setting will support pressure in MS Journal, OneNote (2003 - 007), etc.

2. Cordless Pen

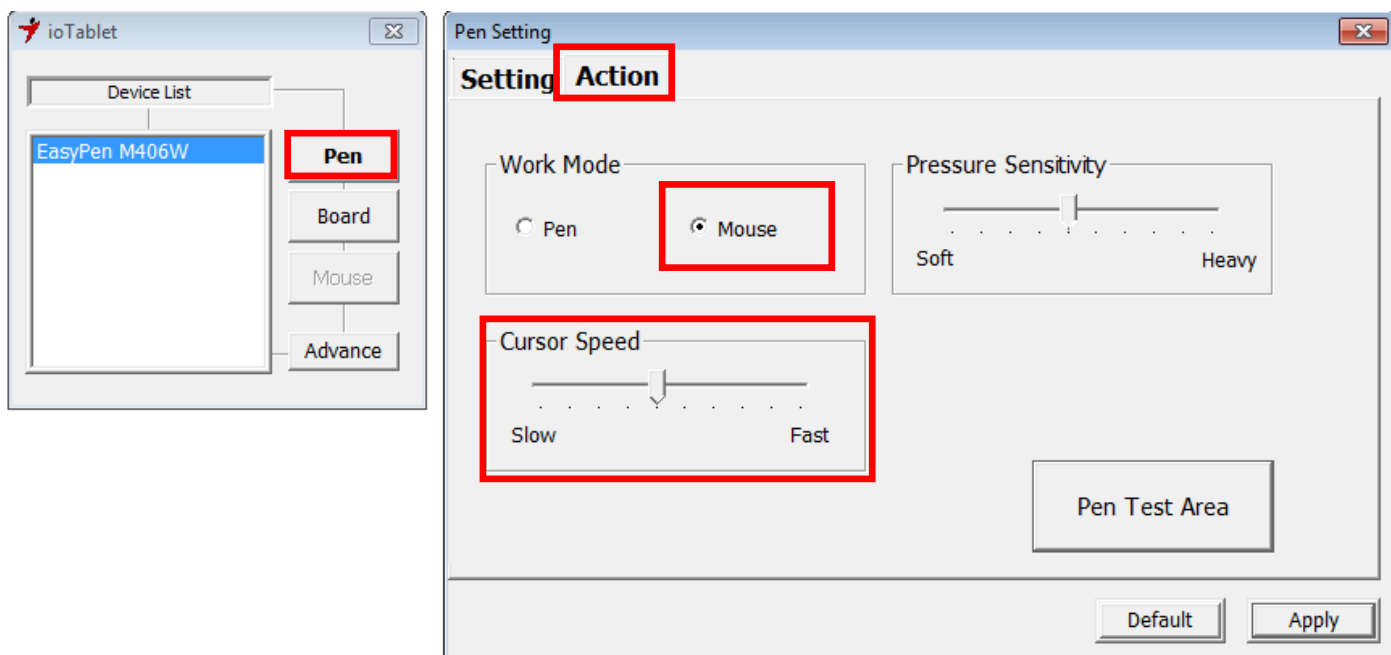
2.1 Button Name:

2.2.1. Pen Mode (Absolute mode): Use the pen to draw, point, click and sign as you wish.



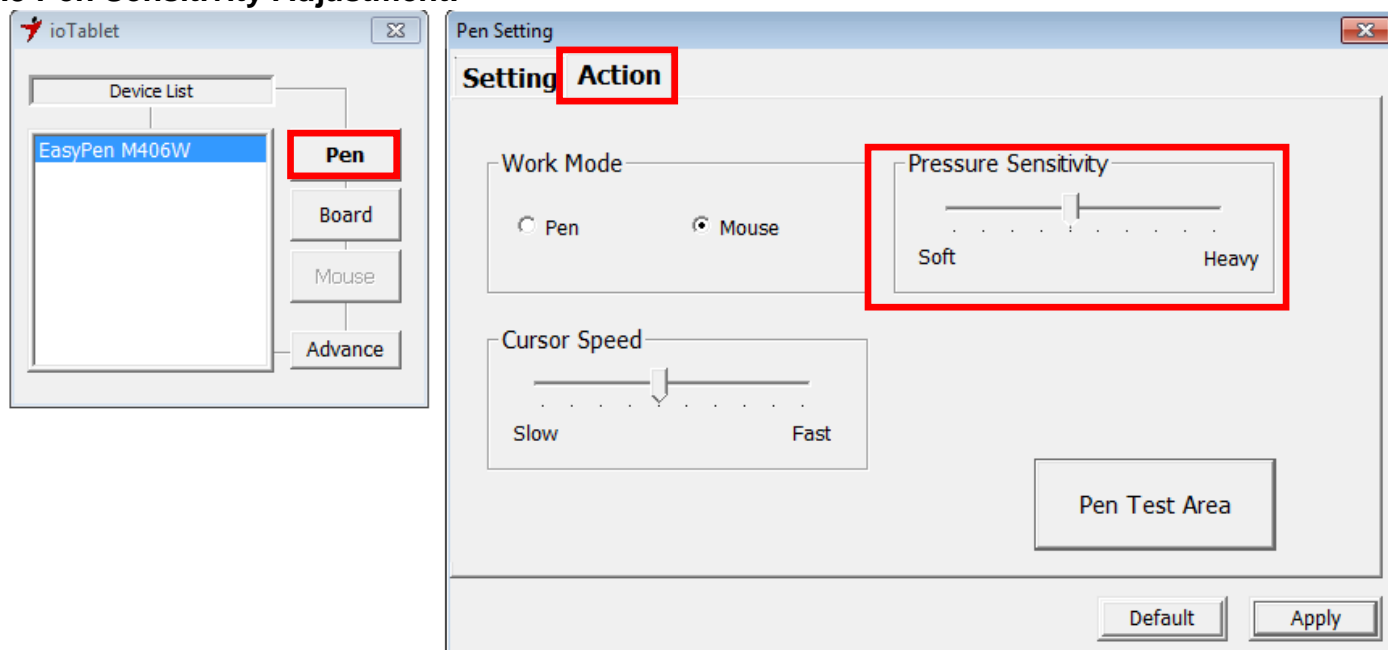
2.2.2. Mouse Mode (Relative mode): Use the pen as a traditional mouse.

2.2.2.1 Cursor Speed Adjustment:



In Mouse mode, you may move the cursor speed between slow and fast to adjust the speed.

2.3 Pen Sensitivity Adjustment:



The pen has 1024 pressure levels sensitivity for all kinds of shapes and thickness. Under either Pen Mode or Mouse Mode you can adjust pressure sensitivity. Move the slider in the sensitivity bar to adjust the levels. There is a test area to draw a line by pressing the pen tip on the tablet pad.

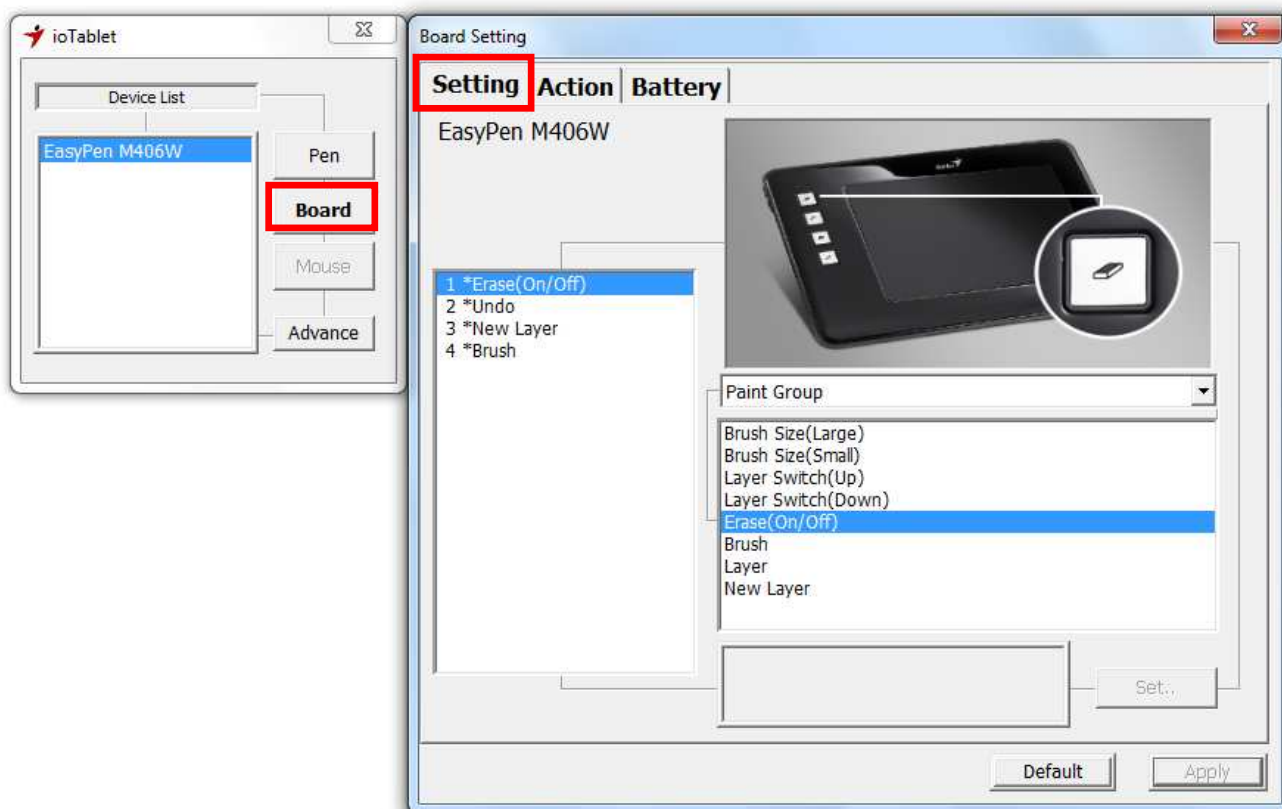
Simply chose the function you require and press “Apply” to activate it.

2.4 Default:

Tap on the **Default** button to return to the manufacturer settings.

3. Tablet

3.1 Re-define Express keys:



All the available express keys are shown on the left side of the menu. Click on any of them to find out the icon and location. You may re-program any express key from the drop down menu below the tablet picture.

3.2 For Tablet express keys definition:

You may choose any:

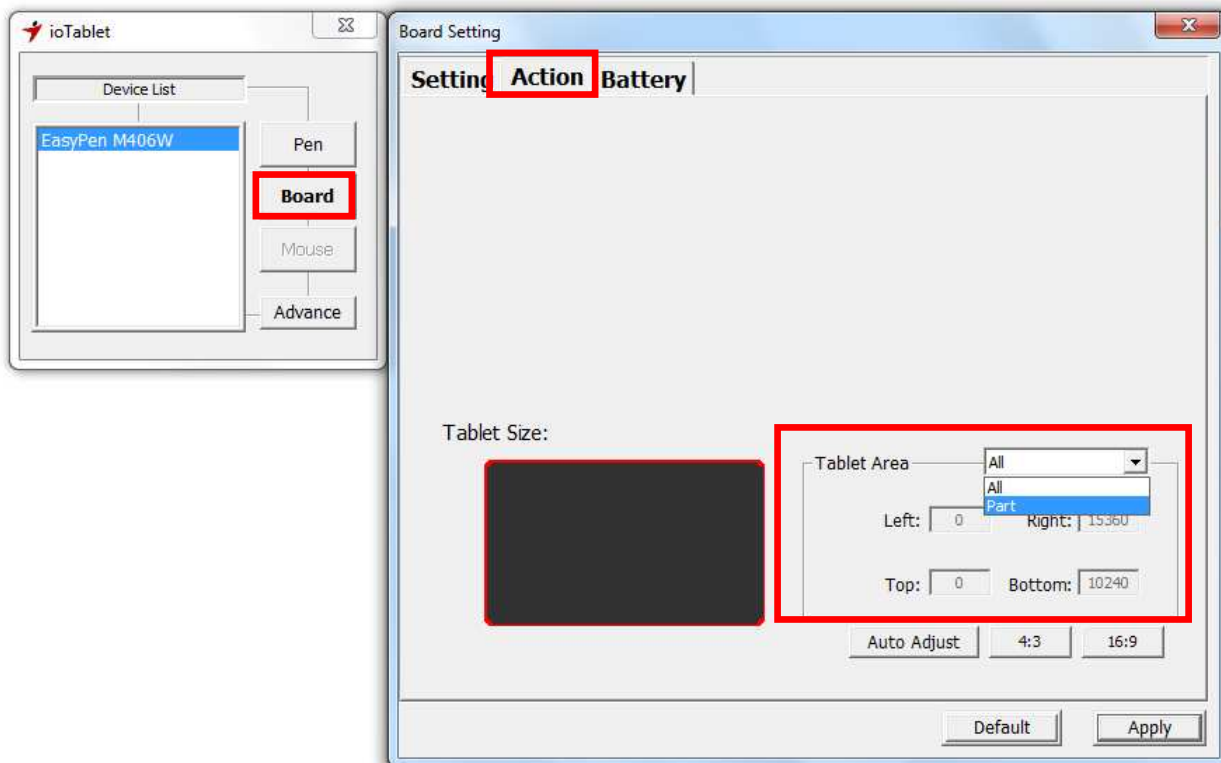
- Click Group: Click Scroll, Lock, etc.
- Office Group: Copy, Save, Undo, etc.
- System Group: My Computer, My pictures, Media Player, etc.
- Browser Group: Back, Forward, Refresh, etc.
- Audio Group: Play, Stop, Mute, etc.

Simply chose the function you require and press “Apply” to activate it.

3.3 Default

Return the Express Keys to the default settings.

3.4 Tablet working area:

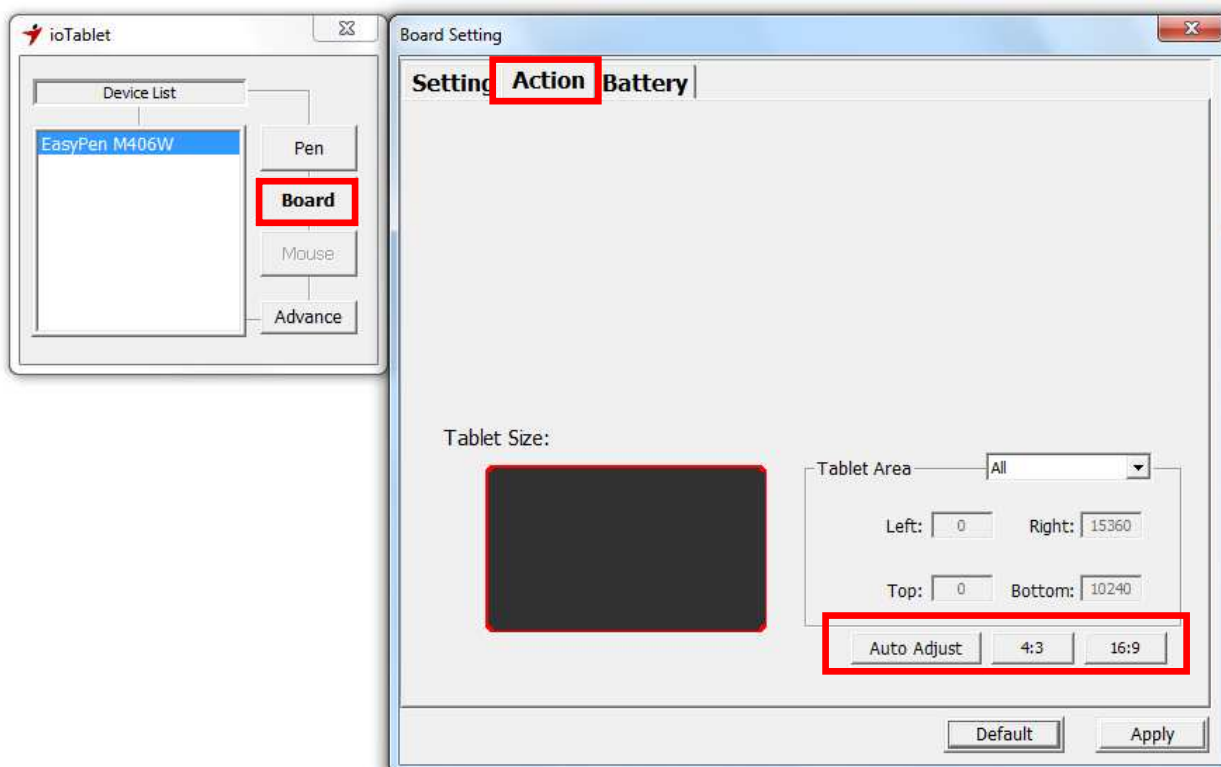


There are two modes available to define the working area, click “Apply” to activate it.

3.4.1. All (Full Area): Select the largest possible working area depends on the tablet size.

3.4.2. Part (Programmable Area): Allows you to define the dimensions for top, bottom, left and right. Define the size by inputting any numbers in the blank bars.

3.5 Change Screen Ratio:



This tablet can be adjusted according to your LCD display.

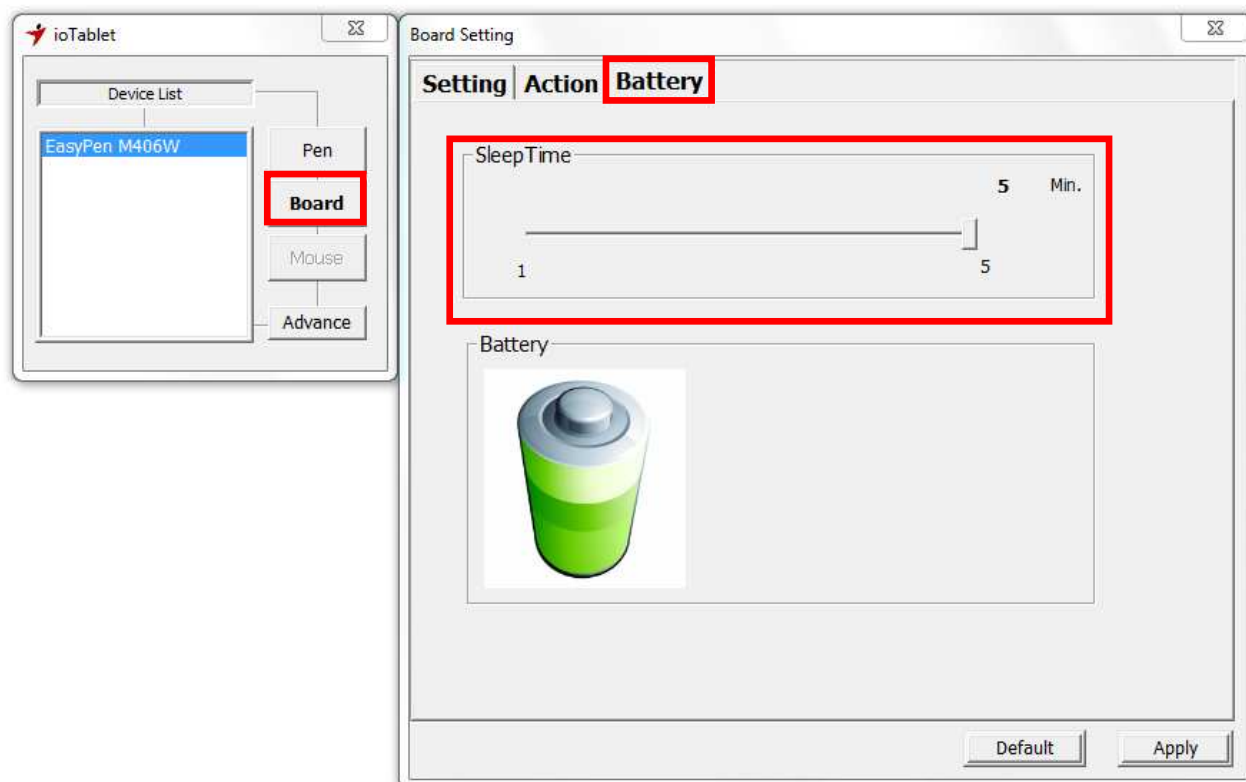
- A. Set the tablet working area the same as the screen size by clicking “Auto Adjust”.
- B. Switch the screen ratio by selecting 4:3 (Standard) or 16:9 (Wide).

Simply chose the function you require and press “Apply” to activate it.

3.6 Default:

Tap on the **Default** button to return to the manufacturer settings.

3.7 Change the length of sleep time:



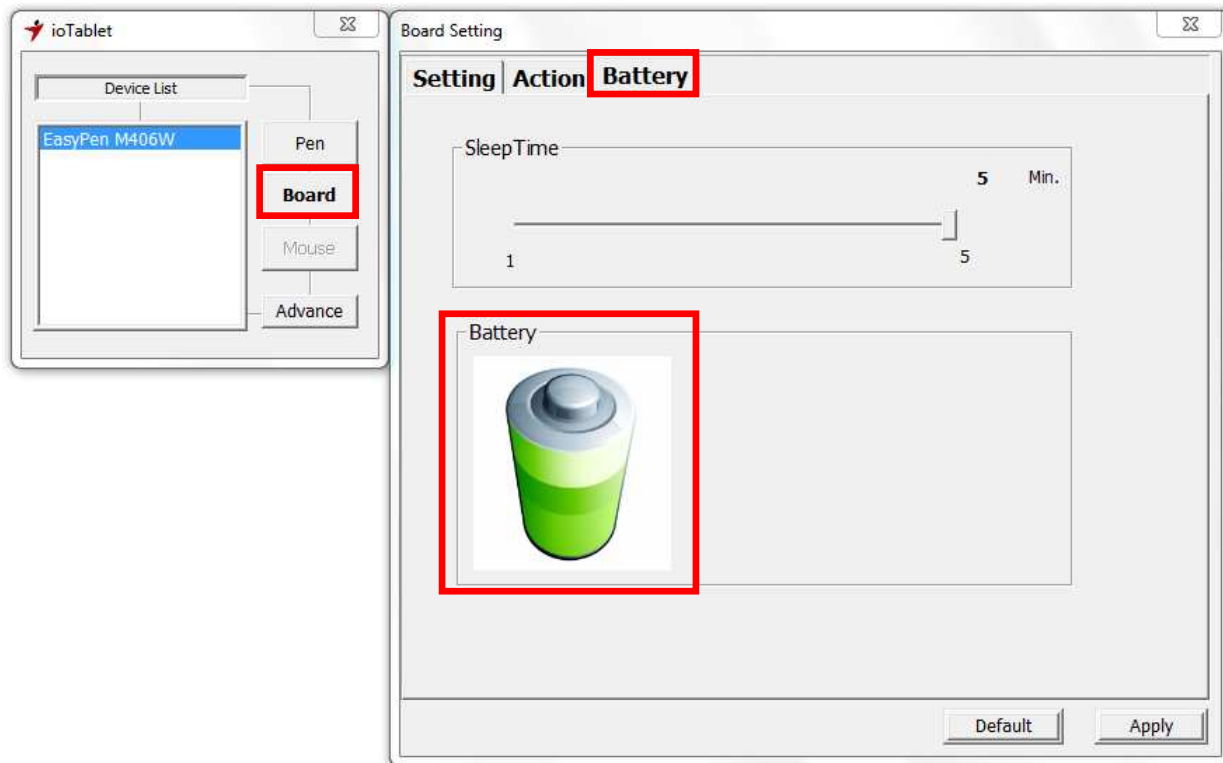
Move the slider in the Sleep Time bar to adjust the length of time, click “Apply” to activate it.

3.8 Default:

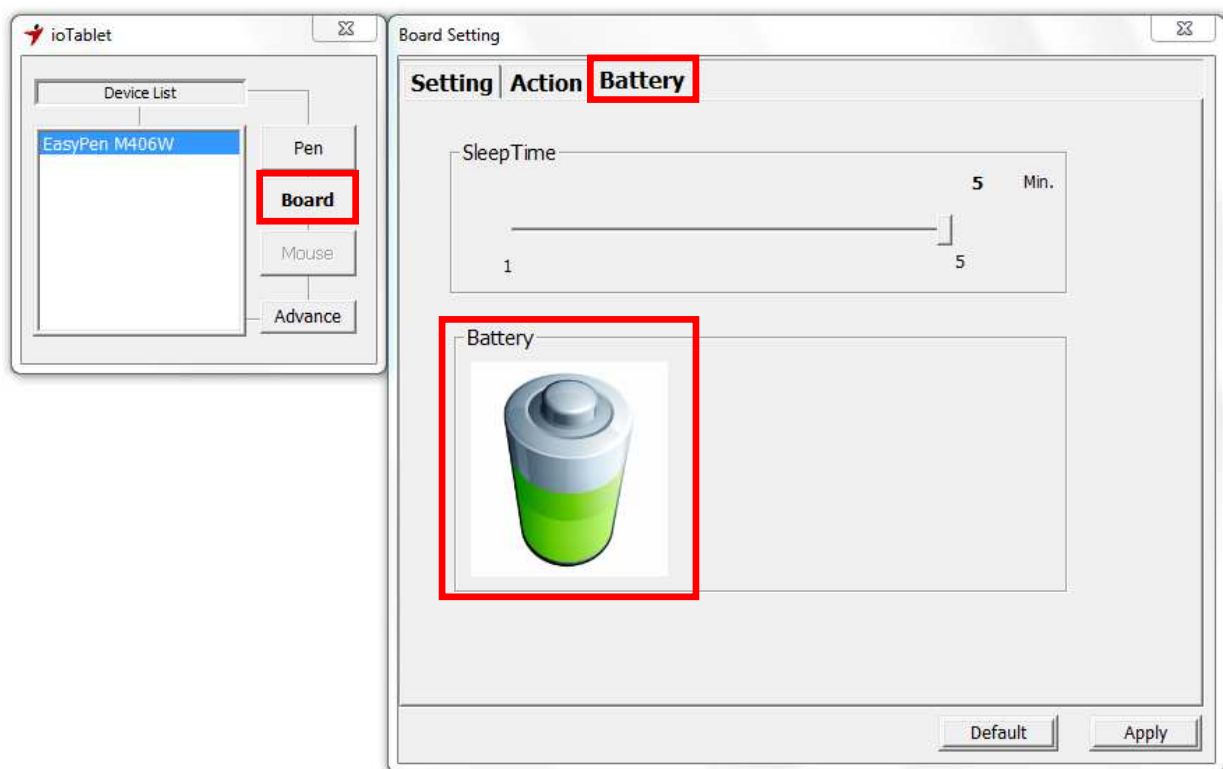
Tap on the **Default** button to return to the manufacturer settings.

3.9 Watch the battery capacity status in the info tab:

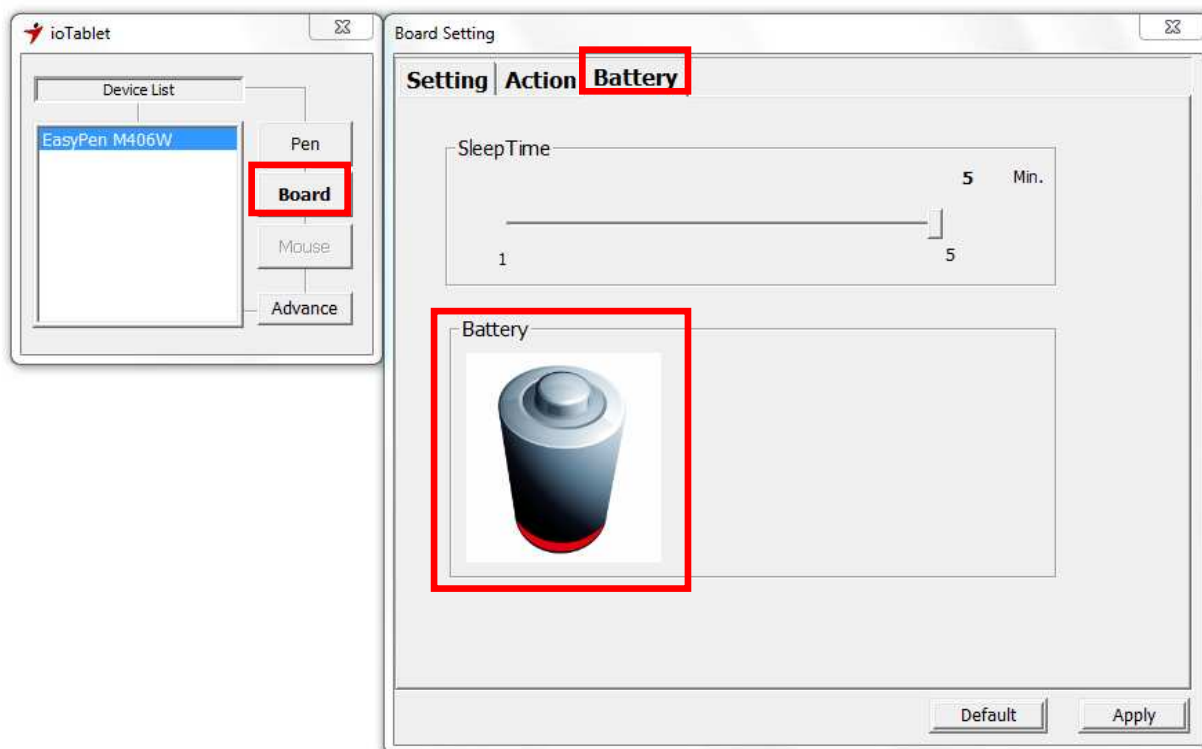
3.9.1. Full power



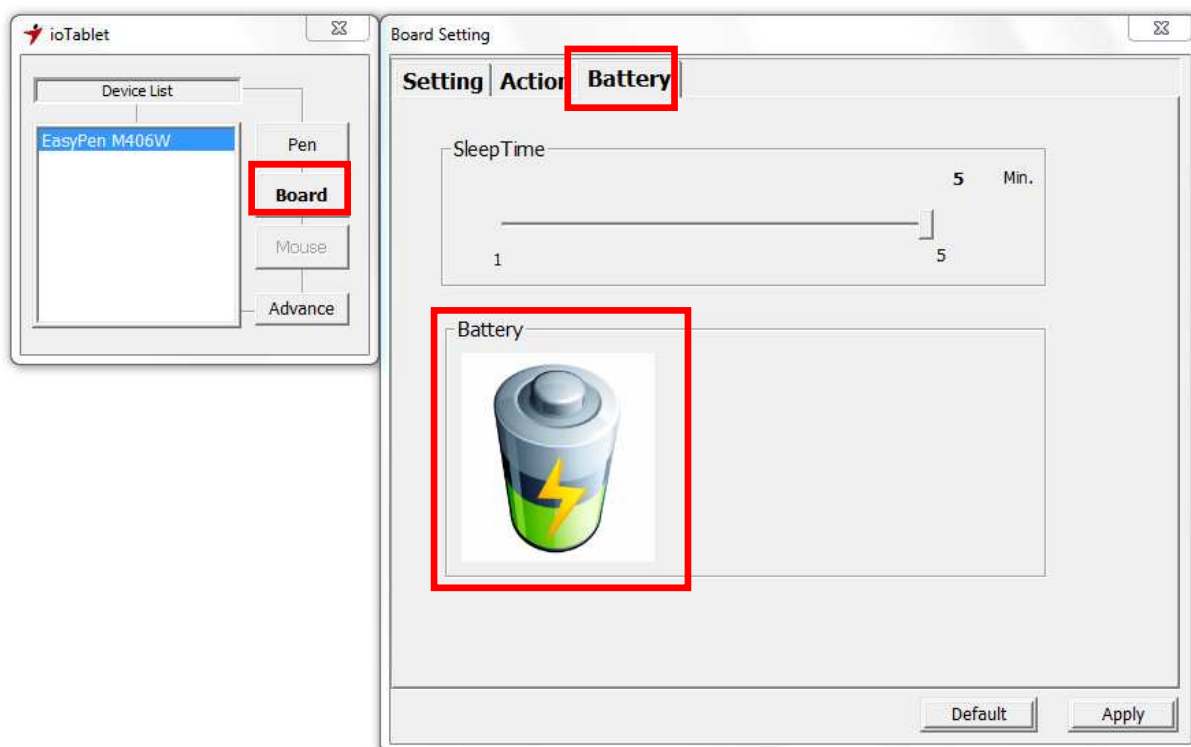
3.9.2. 50% power



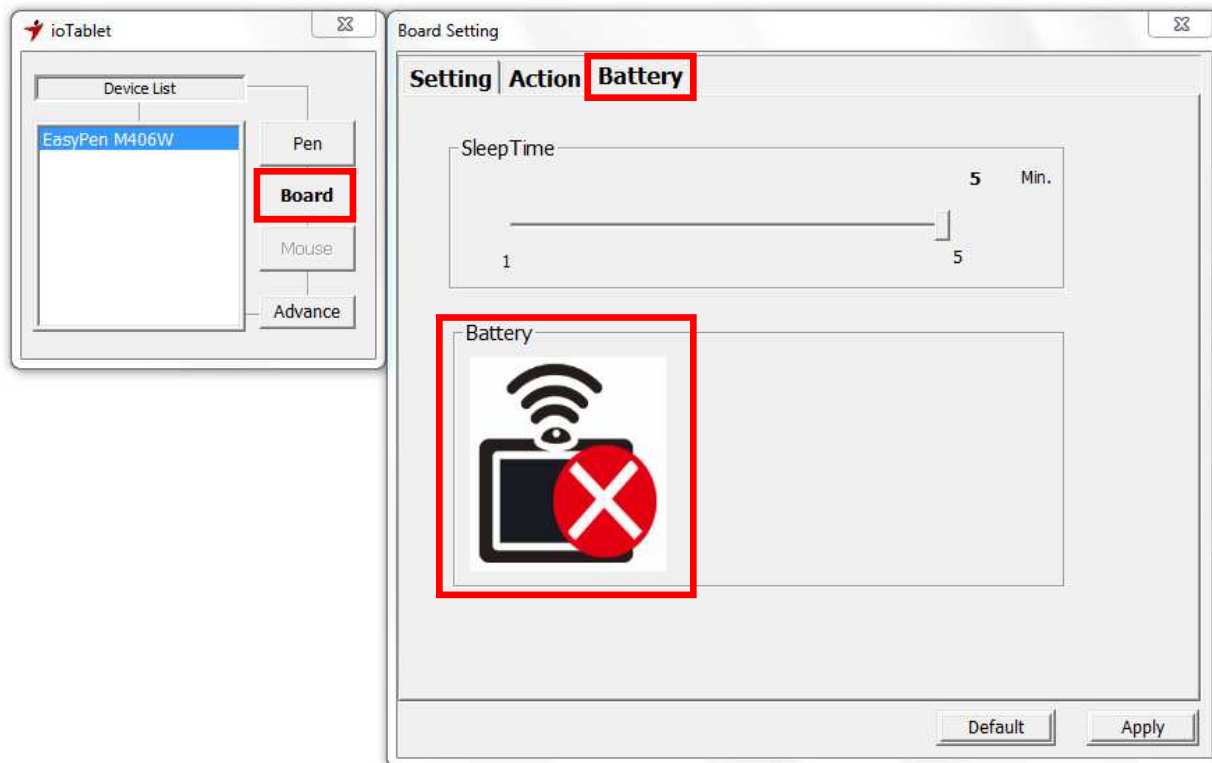
3.9.3. Battery low



3.9.4. Charging the rechargeable batteries

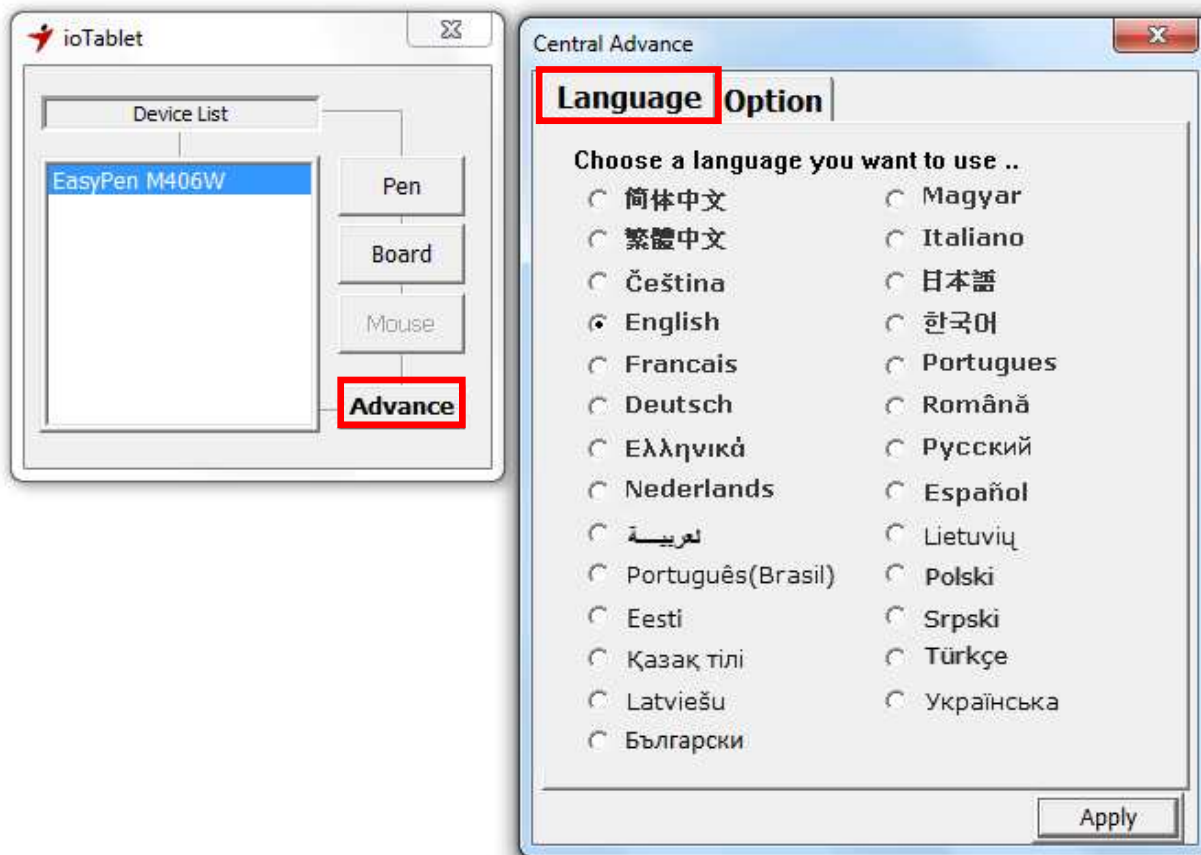


3.10. Wireless tablet is not connected to your PC:



4. Advance

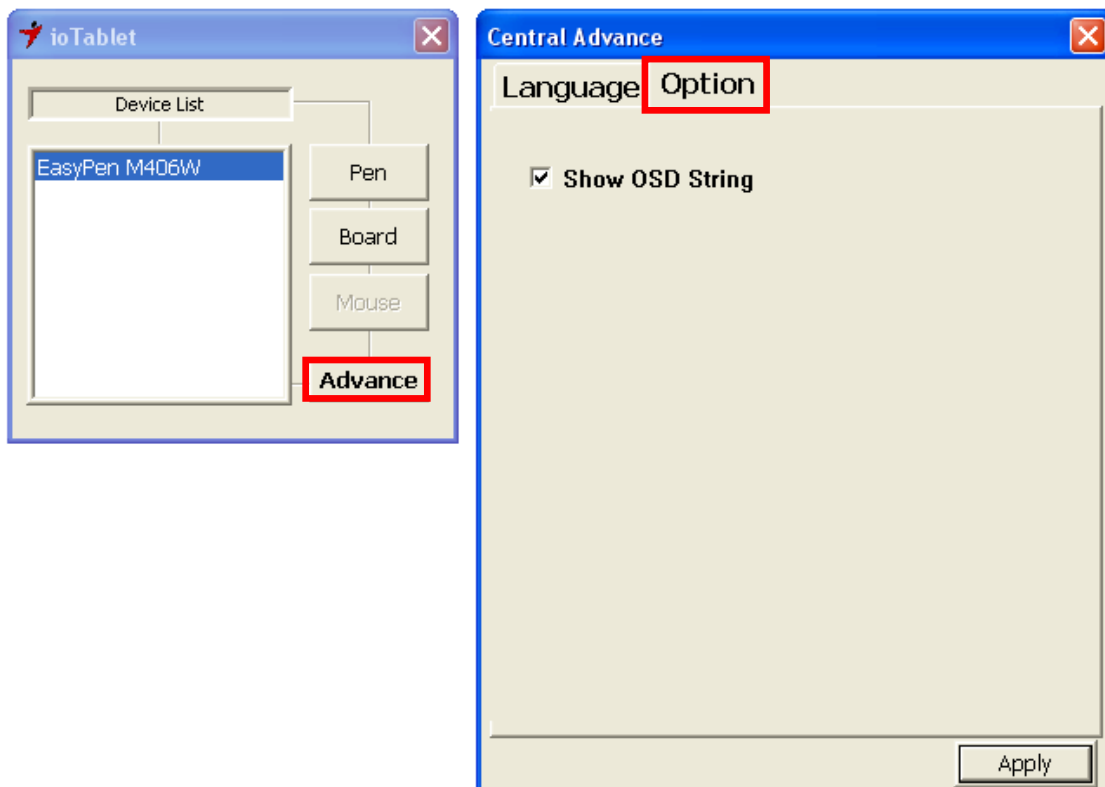
4.1 Change interface language:



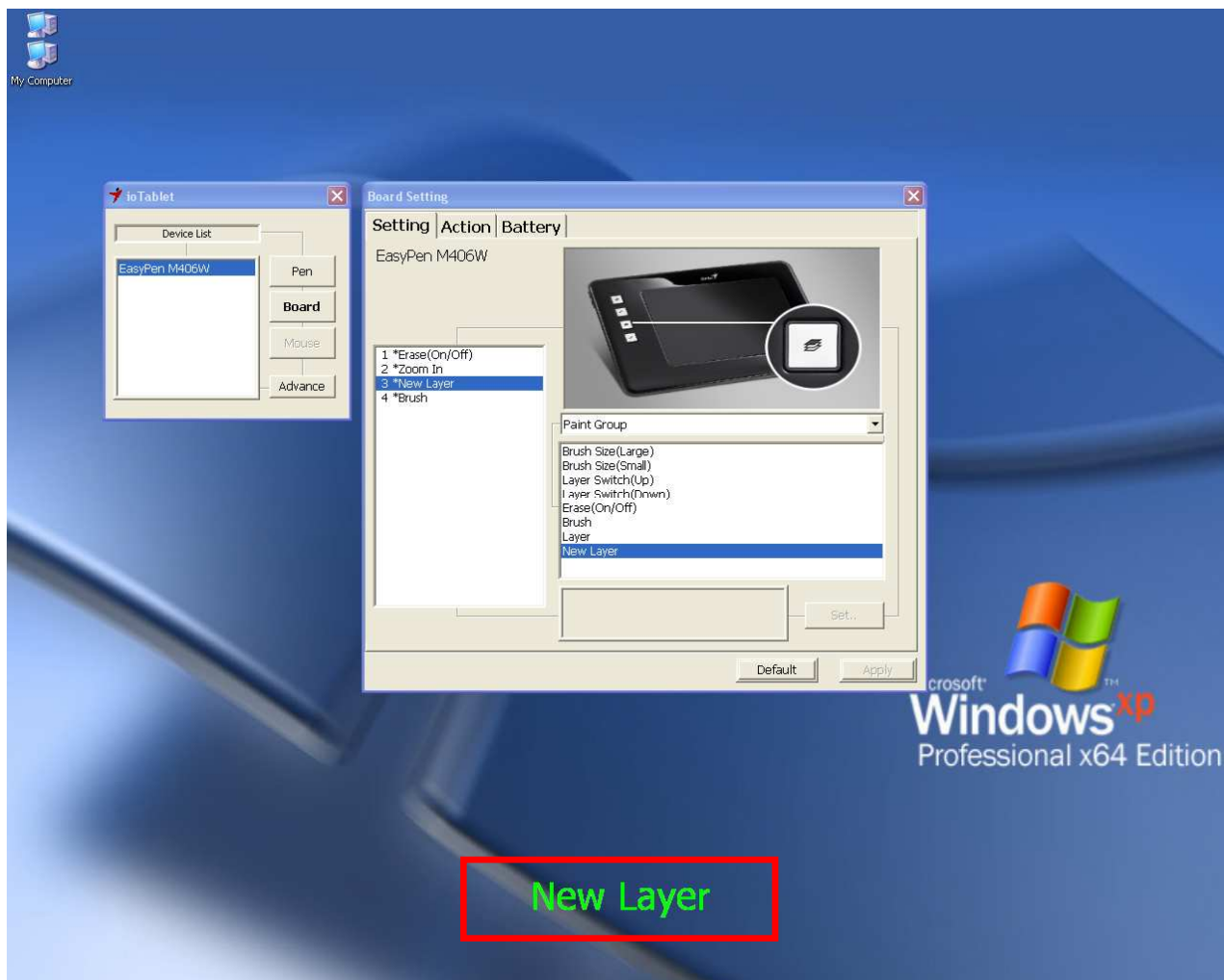
You can click any column for the language of your preference. Click “Apply” to activate it.

4.2 Disable OSD String:

You can click on the column not showing the OSD string, click “Apply” to activate it.



The OSD string shows the function of any express key or button on the pen barrel, which is normally at the lower middle of the screen.



III. Charging the rechargeable batteries

1. Charging the Wireless Tablet rechargeable batteries

Test your wireless stylus pen in the tablet working area, if it doesn't work, use new batteries or charge the rechargeable batteries of the wireless tablet using the micro USB cable and plug it into your PC.

When the green LED of the wireless tablet LED is blinking when the pen tip is hovering or in the working area above the tablet, the tablet will be out of power within 30 minutes.

To charge the rechargeable batteries inside the tablet, plug the micro USB cable into your PC.



When charging the batteries, the red LED of the tablet will be blinking, it will stay on when the batteries are completed charged. You can remove the micro USB cable from your PC and the tablet.

- ★ **Note: DO NOT charge your tablet if you are not using rechargeable batteries, it may cause fire, explosion or burst.**
- ★ **Do not mix or use different types of batteries at the same time such as LI-Ion, Alkaline, etc; and remember do not put the batteries in the wrong direction.**

IV. Storing the Digital pen and changing the Pen Battery & Tip

1. Storing the digital pen properly

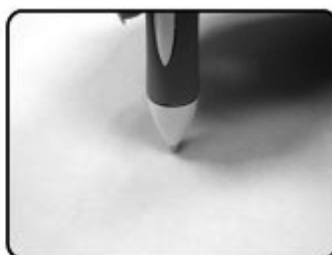
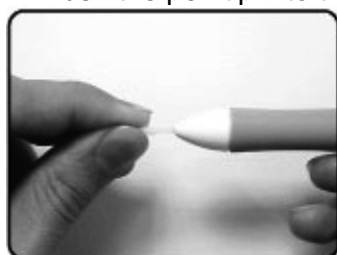
To store the digital pen, make sure that the tip does not touch anything, especially, do not let the pen stand in a cup or penholder with the tip down. It is recommended to place the pen in a pen holder or store it with the pen tip pointing upward, or place it horizontally with the pen tip free of any other objects.

2. Changing the wireless stylus pen tip

A: Pull out the pen tip from the digital pen by using the Pen Clip..



B: Push the pen tip into the digital pen.



V. Notes on Battery Usage

When you use the battery, carefully read and strictly observe the Safety Instructions and the notes described below:

- Different battery types and surrounding temperatures may affect the battery performance.
- Avoid using batteries in extremely cold environments as low temperatures can shorten the battery life and reduce wireless device performance.
- If you are using a new rechargeable battery or rechargeable battery that has not been used for an extended period of time (batteries that pass the expiry date are exceptions) it might affect the period of time you can use this device. Therefore, to maximize their performance and lifetime, we recommend that you fully charge the batteries and discharge them for at least one complete cycle before use.
- The battery may feel warm when using the wireless device for an extended period of time or using the flash continuously. This is normal and not a malfunction.
- The wireless device may feel warm when being used continuously or for an extended period of time. This is normal and not a malfunction.
- If you will not be using the batteries for an extended period of time, remove them from the wireless device to prevent leakage or corrosion.
- Always keep the terminals in a clean state.
- Never use manganese batteries.
- Risk of explosion if battery is replaced by an incorrect type.
- Dispose of used batteries according to the instructions.

VI. Question & Answer

Question 1: How can I get the latest update or uninstall the software ?

Answer: You can download the new driver from our website.

1. **Before uninstalling the driver, remove your dongle from the USB port. It will avoid any driver installation error when you install a new driver.**
2. Uninstall your old driver: Click [Start] ► [All Programs] ► [io Tablet] ► [Uninstall].
3. Download the latest version of driver in the download section and save it into your hard disk.
4. Unzip the file in a folder on your hard disk (with Windows built-in unzip utility or a program like Winzip for instance).
5. Double-click the Setup.exe in the folder where you unzipped the file.

Question 2: The tablet cannot work. What can I do?

Answer: Check if the following is okay.

1. Remove the tablet's USB dongle from the computer.
2. Uninstall the tablet driver from the system.
3. Re-connect the tablet's USB dongle to the computer.
 - 3.1 Test your wireless stylus pen in the tablet working area, if it can work as a mouse, that means the

hardware is OK. If it doesn't work, you need to change the batteries or charge your rechargeable batteries using the micro USB cable and plug it into your PC.

3.2 After you changed new batteries for the tablet or charged your rechargeable batteries of the wireless tablet, if it is still not working, that means the hardware is at fault.


★ **Note: DO NOT charge your tablet if you are not using rechargeable batteries, it may cause fire, explosion or burst.**

★ **Do not mix or use different types of batteries at the same time such as LI-Ion, Alkaline, etc; and remember do not put the batteries in the wrong direction.**


4. You can download for free the latest version of driver directly from our website www.geniusnet.com.

5. Setup the new version of driver; and you need to restart your computer.

6. After you restart your computer, on bottom right of the screen, you can find the tablet icon ().

6.1 If you can't find the tablet icon () on the bottom right of the screen, it means the driver failed in startup, and there could be an incompatible issue.

6.2 Check [My Computer] ► [Properties] ► [Hardware] ► [Device Manager], if you see an exclamation mark, it means the installed driver of the tablet is incompatible with the Windows system.

7. By clicking the tablet icon () on the bottom right of the screen, you can test the pressure sensitivity to see whether the pen pressure function works or not. (Check the Pen tablet configuration section for more details).

☆ If you do not have pen pressure, it means the pen might be faulty.

Question 3 : Why does the green LED blink when the pen tip is hovering or within the working area of the tablet?

Answer: This is a low battery reminder, so you need to change the batteries or charge the rechargeable batteries using the micro USB cable and plug it into your PC.

★ **Note: DO NOT charge your tablet if you are not using rechargeable batteries, it may cause fire, explosion or burst.**

★ **Do not mix or use different types of batteries at the same time such as LI-Ion, Alkaline, etc; and remember do not put the batteries in the wrong direction.**

FCC ID: FSUGMZJM

FCC Compliance and Advisory Statement

This device complies with Part 15 of the FCC rules. Operation is subject to the following two conditions:(1) this device may not cause harmful interference, and (2) this device must accept any interference received, including interference that may cause undesired operation.

This equipment has been tested and found to comply with the limits for a Class B digital device,

according to Part 15 of the FCC rules. These limits are designed to provide reasonable protection against harmful interference in a residential installation. This equipment generates, uses and can radiate radio frequency energy and if not installed and used in accordance with the instructions, may cause harmful interference to radio communications. However, there is no guarantee that interference will not occur in a particular installation. If this equipment does cause harmful interference to radio or television reception, which can be determined by turning the equipment off and on, the user is encouraged to try correct the interference by one or more of the following measures:

- 1.Reorient the receiving antenna.
- 2.Increase the separation between the equipment and receiver.
- 3.Connect the equipment into and outlet on a circuit different from that to which the receiver is connected.
- 4.Consult the dealer or an experienced radio/TV technician for help.

Any special accessories needed for compliance must be specified in the instruction manual.

Warning: A shielded-type power cord is required in order to meet FCC emission limits and also to prevent interference to the nearby radio and television reception. It is essential that only the supplied power cord be used. Use only shielded cables to connect I/O devices to this equipment.

CAUTION: Any changes or modifications not expressly approved by the party responsible for compliance could void your authority to operate the equipment.

IC statementThis Class B digital apparatus complies with Canadian ICES-003.Cet appareil numérique de la classe B est conforme à la norme NMB-003 du Canada.