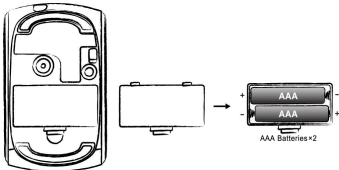


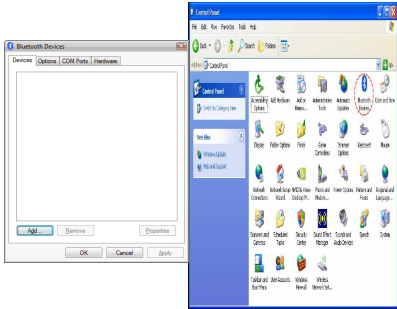
Hardware Installation

- 1. Install two AAA batteries in the mouse.



Pairing Process in Vista and Windows XP SP2

- 1. Open the Windows control panel, then select "Bluetooth devices".



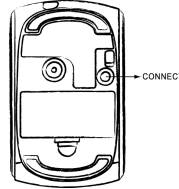
- 2. Click "Add....."

ENGLISH

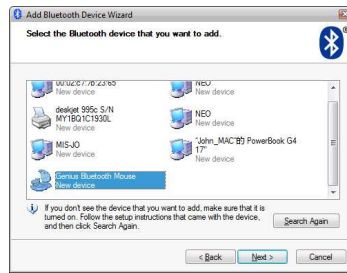
3. Select "My device is setup and ready to be found", then click "Next".



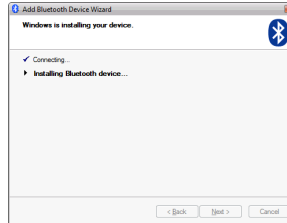
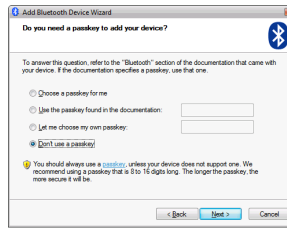
4. Press and hold the "CONNECT" button under the mouse.



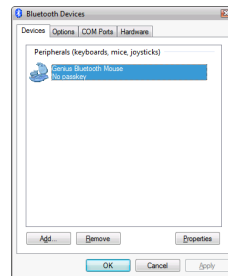
5. In "Peripherals (Keyboards, mice, joysticks)", select Genius Bluetooth Mouse and click "Next".



6. Select “Don’t use a passkey” and click “Next”.
7. Windows will start to connect the Genius Bluetooth Mouse automatically. Press the finish button after the connection process is completed.

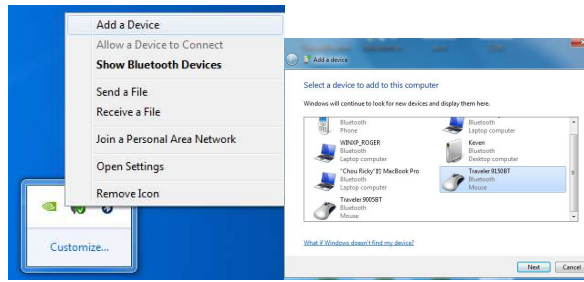


Once the connection between the Genius Bluetooth Mouse and your computer is established, the connection will be kept permanently. That means the connection will re-establish automatically each time you run Windows.

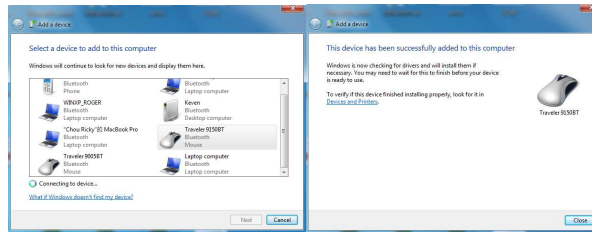


Pairing Process in Windows 7

1. Select the Bluetooth device icon and click the right mouse button to open the function list, then select “Add a Device”.
2. Press and hold the “CONNECT” button under the mouse.
3. Select Genius Bluetooth Mouse, and click “Next”.



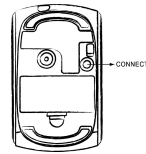
4. Windows will start to connect the Genius Bluetooth Mouse automatically. Press the “Close” button after the connection process is completed.



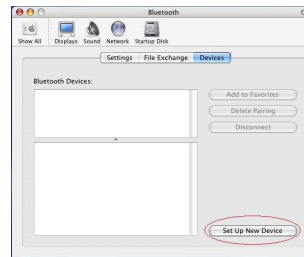
ENGLISH

Pairing Process in Mac OS X 10.2.8 or later

1. Press and hold the “CONNECT” button under the mouse.



2. Click the Bluetooth icon on the task bar and select “Setup Bluetooth device”.



3. Click “Continue” when the “Bluetooth Setup Assistant” appears.

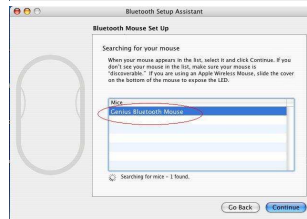


ENGLISH

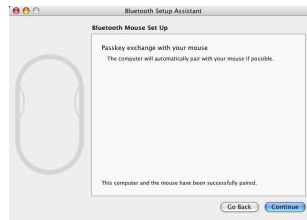
4. Choose "Mouse" and press "Continue" to the next step.



5. When Bluetooth finds the "Genius Bluetooth Mouse", please press "Continue" to the next step.



6. Click "Continue" when the "Passkey exchange with your mouse" appears.

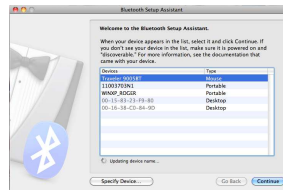
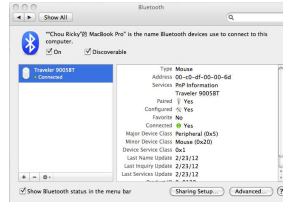


7. The connection is now successful and you can use your Genius Bluetooth Mouse.



Pairing Process in Mac OS X 10.5 or later

1. Click the Bluetooth icon in the task bar and click the + sign to "Setup new device".
2. Press and hold the "CONNECT" button under the mouse.
3. When Bluetooth finds the "Genius Bluetooth Mouse", press "Continue" to the next step.



4. When Mac connects with the Genius Bluetooth Mouse, press "Quit" and return to the Bluetooth setup screen.



5. The connection is now successful and you can use your Genius Bluetooth Mouse.

Now you can use the Genius Bluetooth Mouse wirelessly with a Bluetooth enabled Apple computer. Afterwards, the connection of the Genius Bluetooth mouse will re-establish automatically each time Mac OS X runs.

Software Installation (for 4D scrolling only)

1. Make sure the mouse is connected to the computer.
2. Put the CD driver into the CD drive.
3. Follow the instructions on the screen to finish the software installation.

Adjust dpi resolution

Press left and right button together for three seconds, the resolution will switch from 1600 to 800 dpi. Press both buttons again for three seconds and it will revert to 1600 dpi. The LED flash is shorter for 800 dpi.

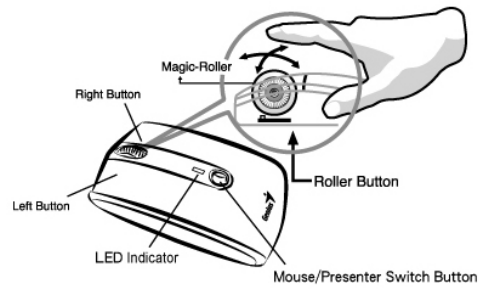


Note:

- **Class 2 Laser Product.** The last pointer is dangerous to eyes! Do not stare into the beam, and be sure to avoid any child using the pointer. (IEC 60825-1)

Factory Setting

Use “Switch Button” to switch from “**Mouse mode**” and “**Presenter mode**” for different functions. LED flash will show you which mode you are in now. When LED is “BLUE”, it is in Mouse mode and when LED is in “RED”, it is in Presenter mode.

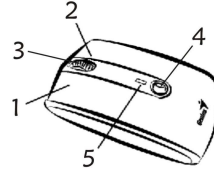


In Mouse mode:

1. **Left Button:** Provides traditional mouse functions like click, double click and drag.
2. **Right Button:** Provides traditional mouse click functions.

ENGLISH

3. **Magic-Roller:** Press the “Magic-Roller” to surf the Internet and Windows documents.
Horizontal Scroll: Press the roller to the left and the cursor scrolls to the left; press the roller to the right and the cursor scrolls to the right.
4. **Switch Button:** To switch between Mode-1 (Mouse) and Mode-2 (Presenter) function.
5. **LED indicator:** If your battery power is low, the LED will brighten. When LED is “BLUE” it is in Mouse mode.



In Presenter Mode:

1. **Left Button:** Next page when you are in PowerPoint.
2. **Right Button:** Previous page when you are in PowerPoint.
3. **Magic-Roller:** Press the “Magic-Roller” to use laser point. ■



ENGLISH

Horizontal Scroll: Press the roller to the right is F5 (like keyboard function) to use PowerPoint in your presentation. Press the roller to the left to ESC.

4. **Switch Button:** To switch between Mode-1 (Mouse) and Mode-2 (Presenter) function.
5. **LED indicator:** If your battery power is low, the LED will brighten. When LED is "Red" it is in Presenter mode.

Button Function:

Button	Mouse mode	Presenter mode
1	Left Button	Next page
2	Right Button	Previous page
3	Magic-Roller	Laser On/Off
	Horizontal Scroll	Scroll right: F5
		Scroll left: ESC
4	Mode switch	Mode switch
5	LED indicator is blue	LED indicator is red

Remark:

- If not in use for a while, the Bluetooth Mouse will go into sleep mode. Move or click any button on the Bluetooth Mouse to wake it up, it takes less than three seconds for it to work again.

ENGLISH

- If not in use for 30 minutes or longer, the Bluetooth Mouse will disconnect from your computer. Move or click any button on the Bluetooth Mouse for reconnection, it takes about six seconds for the mouse to start working normally.

- **Note:** Changes or modifications not expressly approved by the party responsible for compliance could void the user's authority to operate the equipment. (15.21)

-
- This device complies with part 15 of the FCC Rules. Operation is subject to the following two conditions: (1) This device may not cause harmful interference, and (2) this device must accept any interference received, including interference that may cause undesired operation. (15.19(a)(3))

-
-

- **FEDERAL COMMUNICATIONS COMMISSION**
- **INTERFERENCE STATEMENT**

- This equipment has been tested and found to comply with the limits for a Class B digital device, pursuant to Part 15 of the FCC Rules. These limits are designed to provide reasonable protection against harmful interference in a residential installation. This equipment generates, uses and can radiate radio frequency energy and, if not installed and used in accordance with the instructions, may cause harmful interference to radio communications. However, there is no guarantee that interference will not occur in a particular installation. If this equipment does cause harmful interference to radio or television reception, which can be determined by turning the equipment off and on, the user is encouraged to try to correct the interference by one or more of the following measures:

- – Reorient or relocate the receiving antenna.
- – Increase the separation between the equipment and receiver.
- – Connect the equipment into an outlet on a circuit different from that to which the receiver is connected.
- – Consult the dealer or an experienced radio/TV technician for help.

- **CAUTION:**

- Any changes or modifications not expressly approved by the party responsible for compliance could void the user's authority to operate the equipment.