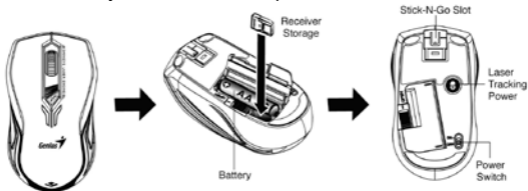


## Hardware Installation

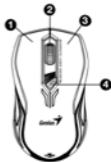
1. Connect the receiver to a USB port of a PC.
2. Install one AA or AAA battery in the mouse as instructed.
3. Make sure that you have switched on the power switch underneath the mouse.



## Mouse Button Assignments

1. **Left Button:** Provides traditional mouse functions like click, double click and drag.
2. **Magic-Roller:** Press the “Magic-Roller” to surf the Internet and Windows documents.
3. **Right Button:** Provides traditional mouse click functions.
4. **DPI adjustment:** Default is 1200 dpi, 800 dpi (1 flash), 1200dpi (2 flashes), 1600 dpi (3 flashes)

**Note:** Download the programmable driver from our website: [www.geniusnet.com](http://www.geniusnet.com)



## Warning: (Troubleshooting)

1. The connection of the wireless device is **factory preset**, so when you plug the USB receiver into any USB port, the connection between the micro receiver and the mouse **will be established automatically**.
2. In case your PC did not install the hardware successfully, remove the micro receiver from the USB port and go **Human Interface Devices** under **Device Manager** to remove the mouse then plug in the micro receiver to a USB port again.
3. If you feel the mouse does not move smooth as usual, it is possible the battery has lost its charge so you need to replace it. Remember to put the battery in the correct direction.

**FCC ID: FSUGMZKF****FCC Compliance and Advisory Statement**

This device complies with Part 15 of the FCC rules. Operation is subject to the following two conditions: (1) this device may not cause harmful interference, and (2) this device must accept any interference received, including interference that may cause undesired operation.

This equipment has been tested and found to comply with the limits for a Class B digital device, according to Part 15 of the FCC rules. These limits are designed to provide reasonable protection against harmful interference in a residential installation. This equipment generates, uses and can radiate radio frequency energy and if not installed and used in accordance with the instructions, may cause harmful interference to radio communications. However, there is no guarantee that interference will not occur in a particular installation. If this equipment does cause harmful interference to radio or television reception, which can be determined by turning the equipment off and on, the user is encouraged to try correct the interference by one or more of the following measures:

1. Reorient the receiving antenna.
2. Increase the separation between the equipment and receiver.
3. Connect the equipment into an outlet on a circuit different from that to which the receiver is connected.
4. Consult the dealer or an experienced radio/TV technician for help.

Any special accessories needed for compliance must be specified in the instruction manual.

**Warning:** A shielded-type power cord is required in order to meet FCC emission limits and also to prevent interference to the nearby radio and television reception. It is essential that only the supplied power cord be used. Use only shielded cables to connect I/O devices to this equipment.

**CAUTION:** Any changes or modifications not expressly approved by the party responsible for compliance could void your authority to operate the equipment.

**IC statement:** This Class B digital apparatus complies with Canadian ICES-003. Cet appareil numérique de la classe B est conforme à la norme NMB-003 du Canada.