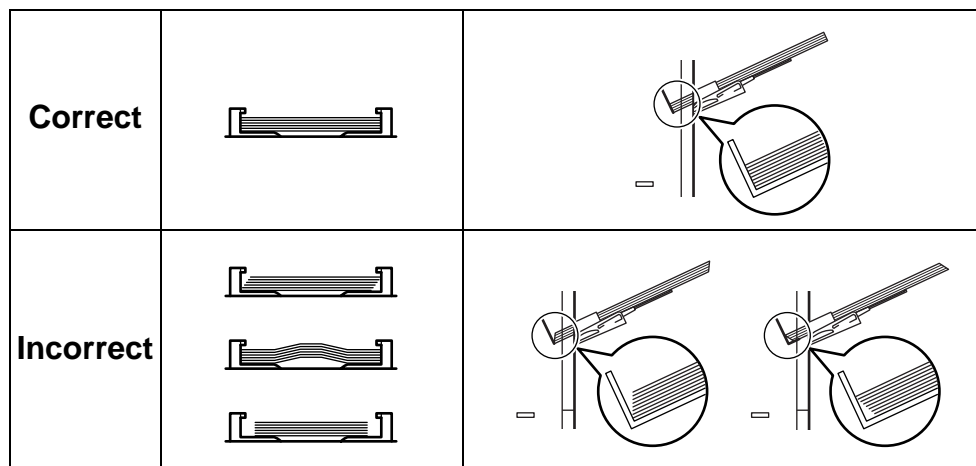


NOTE: If the paper is considerably curled in one direction, for example, if the paper is already printed on one side, try to roll the paper in the opposite direction to counteract the curl. Printed sheets will then come out flat.



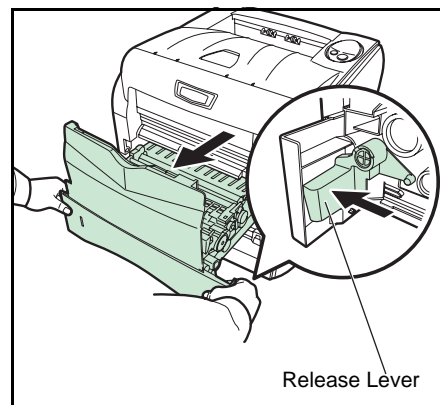
- 6** Set the MP tray paper size using *KM-NET for Clients* or *COMMAND CENTER*. Refer to the utility manuals for further information.

Loading Thick Paper and Envelopes into the MP (Multi-Purpose) Tray

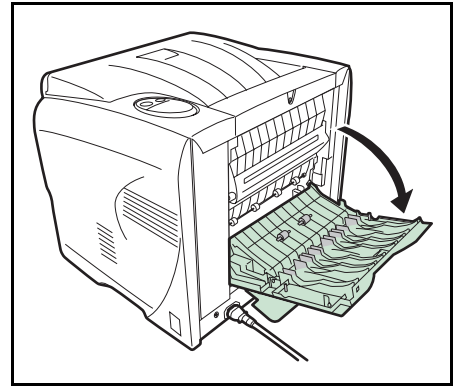
To print on thick paper and envelopes, follow the instructions below.

- 1** While pulling the green release lever, pull out the paper transfer unit.

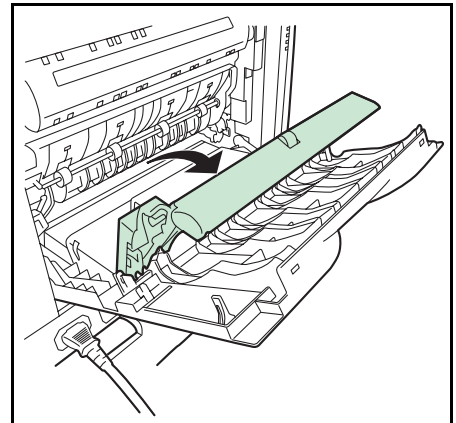
NOTE: When you pull out the transfer unit together with the paper cassette, a bottom plate of the paper cassette may lift. Push the bottom plate down until it locks.



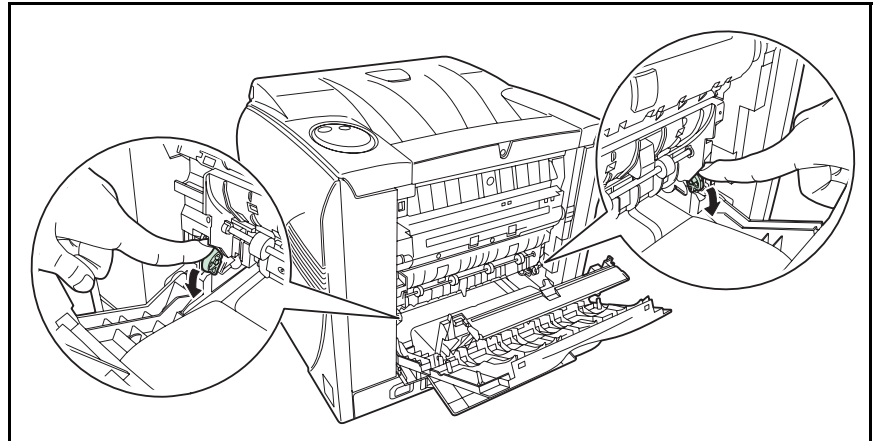
- 2** Open the rear cover.



- 3** Pull the rear paper path and open it.



- 4 Press the green levers to change the thickness of paper.



CAUTION: The fuser unit inside the printer is hot. Do not touch it, as it may result in burn injury.

- 5 Close the rear paper path and rear subcover, then push the paper transfer unit back in completely.

NOTE: Leave the rear cover open to print on the envelope.

- 6 Fan the media (thick paper/envelopes), then tap it on a level surface to avoid media jams or skewed printing.
- 7 Pull the MP tray towards you until it stops.
- 8 Pull out the subtray.
- 9 Adjust the position of the paper guides on the MP tray. Standard paper sizes are marked on the MP tray. For standard paper sizes, slide the paper guides to the corresponding mark.
- 10 Align the paper with the paper guides and insert as far as it will go.
- 11 Set the MP tray paper size using *KM-NET for Clients* or *COMMAND CENTER*. Refer to the utility manuals for further information.

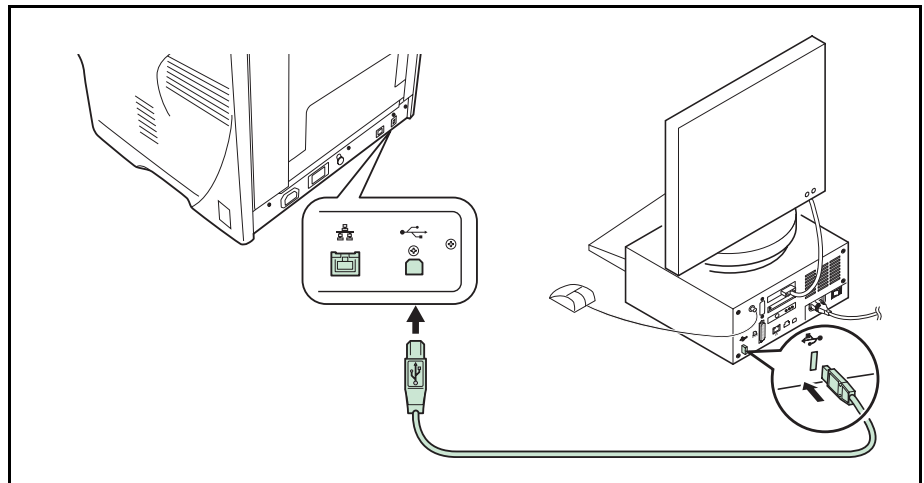
3 Printing

This chapter contains explanations on the following topics:

- Connections 3-2
- Resolving IP address 3-4
- Loading Software 3-6
- Configuring Printer Settings 3-7
- Printing from Application Software 3-8

Connections

Connecting the USB Cable

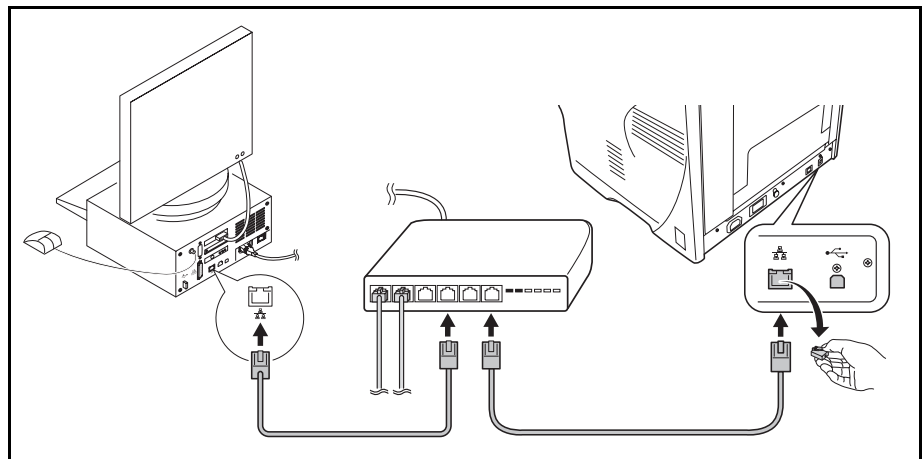


- 1 Connect the USB cable (not included) to the USB Interface Connector.

NOTE: Use a USB cable with a rectangular Type A plug and a square Type B plug. The USB cable should be shielded and no longer than 5 meters (16 feet) long.

- 2 Connect the other end of the USB cable to the computer's USB interface connector.

Connecting the Network Cable



- 1 Remove the cap and connect the shielded network cable (not included) to the computer and the hub (concentrator).

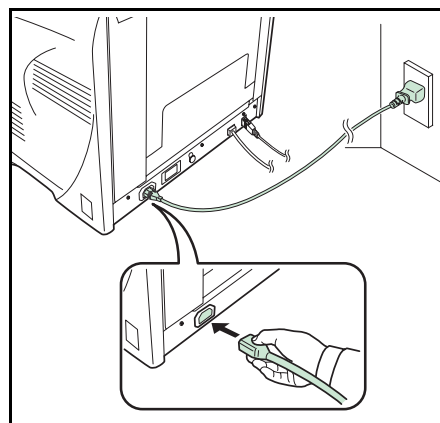
- 2 Connect the other side of the network cable to the Network Interface Connector at the rear of this machine and the hub.

Connecting to Power

Install the printer close to an AC wall outlet. If an extension cord is used, the total length of the power cord plus extension should be 5 meters (16 feet) or less.

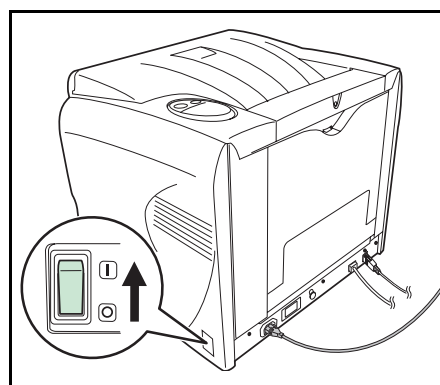
NOTE: Ensure the printer's power switch is off. Only use the power cord supplied with the printer.

- 1 Connect the power cord to the Power Cord Connector at the rear of this printer.



- 2 Connect the other end of the power cord to a power outlet.

- 3 Press the Power Switch to On (|). The printer will begin to warm up.



IMPORTANT: If you install the Toner Container and switch on the power, four indicators will start rapidly flashing. When the printer is first switched on after toner installation, there will be a delay of approximately 20 minutes before the printer is ready to print. Once the Ready indicator lights up, printer installation is complete.

If you turn the power off, you have to wait for an interval of five or more seconds before turning it back on.

Resolving IP address

After you connected the machine with a network cable, you can change or verify the network settings such as IP address and default gateway using *KYOCERA COMMAND CENTER* (hereinafter referred to as *COMMAND CENTER*). *COMMAND CENTER* refers to the home page embedded in this printer.

Requirements

If the printer is used on a TCP/IP network and has a valid IP address, it may be managed from any web browser. The web browser allows full configuration of all printer settings.

When accessing *COMMAND CENTER*, make sure that:

- The TCP/IP protocol is installed on the PC to access *COMMAND CENTER*.
- DHCP server is configured to assign the IP address.
- The IP address is configured for the printer.

Required operating systems (OS) for using *COMMAND CENTER*:

- Microsoft Windows 98SE/Me/2000/XP, Microsoft Windows NT 4.0
- Apple Macintosh OS X 10.x

COMMAND CENTER has been tested with the following web browsers.

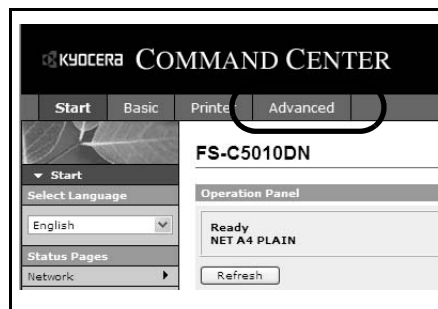
OS	Web Browser
Microsoft Windows	Microsoft Internet Explorer 5.5 and 6.0
	Netscape 7.1 or later
	Opera 7 or later
	Mozilla 1.5 or later
Apple Macintosh	Netscape 7.1 or later
	Safari 1 (OS X 10.2 and later)

Changing or verifying the network settings

Follow these steps to access to *COMMAND CENTER* with a web browser and change or verify the network settings.

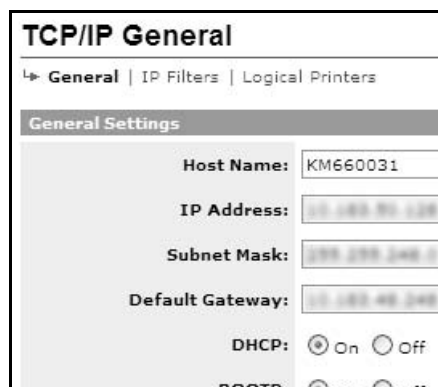
- 1** Press **[Go]** for 3 to 10 seconds to print a status page. For more details, refer to *Keys on page 1-6*.
- 2** Run the web browser.

- 3 In Address, enter the printer's IP address printed on a status page as the URL. The home page displays basic information about the printer.
- 4 Click **Advanced** to open the **Advanced** page which includes advanced settings apply to the printer and is comprised primarily of advanced network settings.



- 5 In General Settings, change the network settings such as IP Address, Subnet Mask, and Default Gateway if necessary.

NOTE: You can also change the other settings using *COMMAND CENTER*. For details, refer to *KYOCERA COMMAND CENTER OPERATION GUIDE*.



Loading Software

Ensure the printer is plugged in and connected to the PC before installing the printer driver and the other utilities from the CD-ROM.

- 1** Switch on the PC and start Windows.

NOTE: When the printer is connected to the PC with a USB cable, if the **Welcome to the Found New Hardware Wizard** dialog box displays, select Cancel.

- 2** Insert the CD-ROM supplied with the printer into the optical drive of the computer.

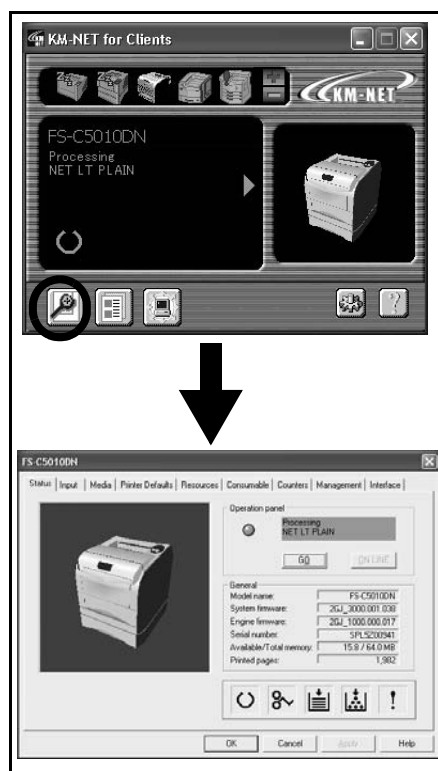
- 3** The installation program starts.

NOTE: If the installation program fails to start, use Windows Explorer to access the CD-ROM and double-click Setup.exe.

- 4** Perform the procedures displayed on the installation program to install the *KX Driver* and the other utilities.

Configuring Printer Settings

You can also rely on other printer utilities such as *KM-NET for Clients* if you need to change settings that are not available on the printer driver. It will allow remote access to printer settings. Printer utilities are supplied in the CD-ROM supplied with the printer.



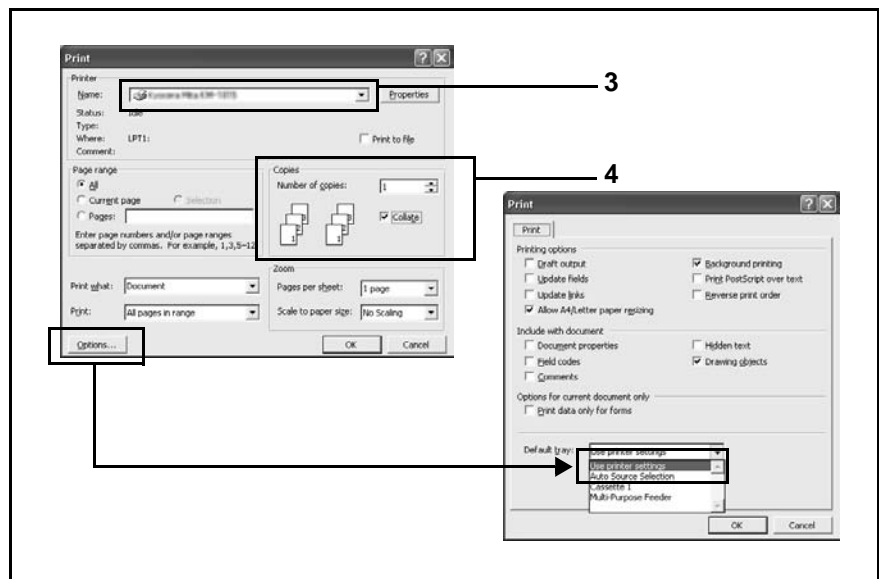
Printing from Application Software

The steps required to print a document created with an application are explained below. You can select the printing paper size.

NOTE: You can also select the various settings by clicking **Properties** to open the **Properties** dialog box.

- 1 Load the paper required into the paper cassette.
- 2 From the application's *File* menu, select **Print**. The **Print** dialog box appears.
- 3 Click the drop-down list of printer names. All the installed printers are listed. Click the name of the printer.
- 4 Use **Number of copies** to enter the number of copies required. Up to 999 copies can be printed.

For Microsoft Word, we recommend that you click **Options** and specify **Use printer settings** for the **Default tray**.



- 5 To start printing, click **OK**.

4 Maintenance

This chapter contains explanations on the following topics:

- General Information..... 4-2
- Toner Container Replacement..... 4-3
- Cleaning the Neighboring Part of the Toner Container. 4-9
- Cleaning the Paper Transfer Unit..... 4-10
- Prolonged Non-Use and Moving the Printer..... 4-12

General Information

This chapter describes basic maintenance tasks you can perform for the printer. You can replace the following components according to the printer's status:

- Toner Containers
- Waste Toner Box

Also, the internal parts need periodic cleaning.

NOTE: Information Collection on Memory Chips — The memory chip attached to the toner container is designed to improve convenience for the end user; to support the recycling operation of empty toner containers; and to gather information to support new product planning and development. The information gathered is anonymous — it cannot be associated to any specific individual and the data is intended to be used anonymously.

Toner Container Replacement

Frequency of toner container replacement

The life of the toner containers depends on the amount of toner required to accomplish your printing jobs. When 5% coverage (a typical business document) of individual toner colors is assumed for A4 or letter size paper:

- Black toner containers last an average of 5,000 monochrome pages.
- The cyan, magenta, and yellow toner containers last an average of 4,000 or 2,000 color images.

You can print a status page to check how much toner remains in the toner container. The Toner Gauge in the consumables status section on the status page shows a progress bar, which roughly represents how much toner is left in the toner container.

Starter Toner Container

The toner containers packed with new printer are starter toner containers. The black starter toner container lasts an average of 2,000 monochrome pages. The cyan, magenta, and yellow starter toner containers last an average of 2,000 color images for each.

Toner Kits

It is strongly recommended that you use the new toner kit supplied from the manufacturer to prevent printer problems and ensure a long printer life.

The toner kits are supplied in 4 different colors: cyan, magenta, yellow and black.

A new toner kit contains the following items:

- Toner Container
- Cleaning cloth
- Three plastic waste bags for old toner container and old waste toner box
- Waste toner box
- Installation Guide

NOTE: Do not remove the toner container from the carton until you are ready to install it in the printer.

Understanding Indicators Requesting Toner Container Replacement

The toner indicator identifies the toner status at two stages of toner usage.

- When the printer becomes low on toner, the toner indicator flashes. Note the replacement is not always necessary at this stage.

- If you ignore the above status and continue printing, the indicator lights up — just before the toner is used up. The toner container must then be replaced immediately.

In either case, replace the toner container, refer to *Toner Container Replacement* on page 4-3.

Replacing the Toner Container

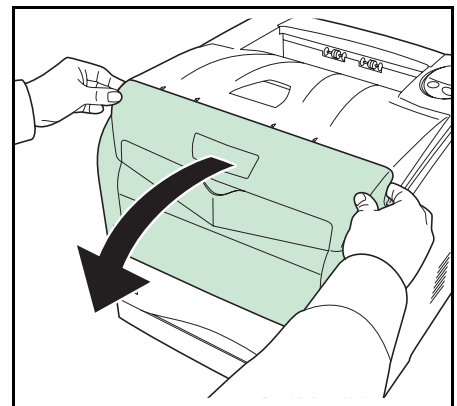
NOTE: During toner container replacement, temporarily move storage media and computer supplies (such as floppy disks) away from the toner container. This is to avoid damaging media by the magnetism of toner.

This section explains how to replace the toner container. When replacing the toner container, always replace the waste toner box at the same time. If this box is full, the printer may be damaged or contaminated by the waste toner that may spill out of the box.

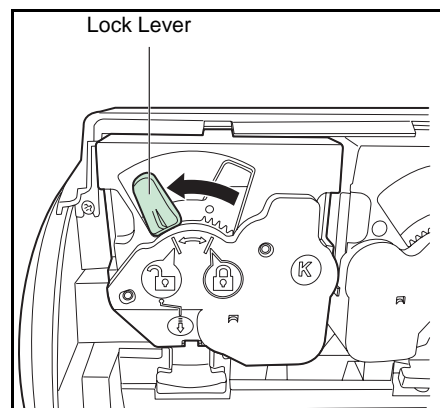
NOTE: You do not have to turn printer power off before starting the replacement. Any data that may be processing in the printer will be deleted if you turn printer the power off.

To replace the toner container, first verify the color of the toner container requiring replacement. The following example is for replacing a black toner container.

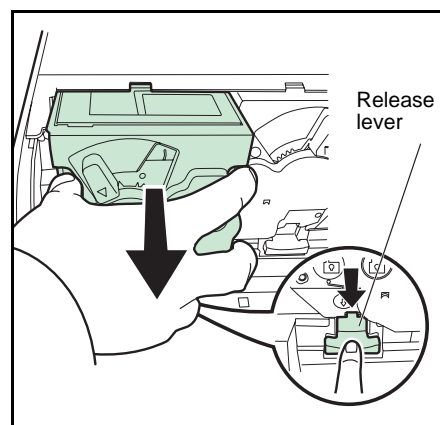
- 1 Open the front cover.



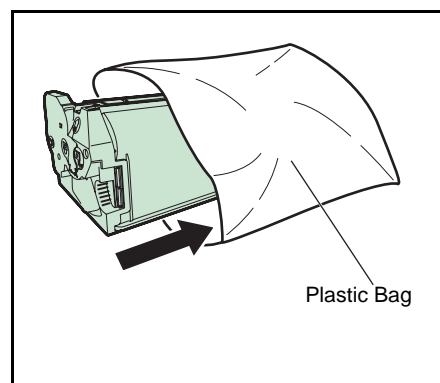
- 2** Turn the blue lock lever on the toner container towards the unlocked symbol.



- 3** Push the release lever and pull out the toner container.

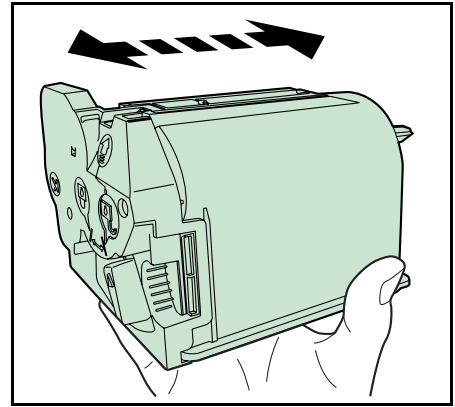


- 4** Put the old toner container in the plastic bag (supplied with the new toner kit) and discard it later according to the local code or regulations for waste disposal.

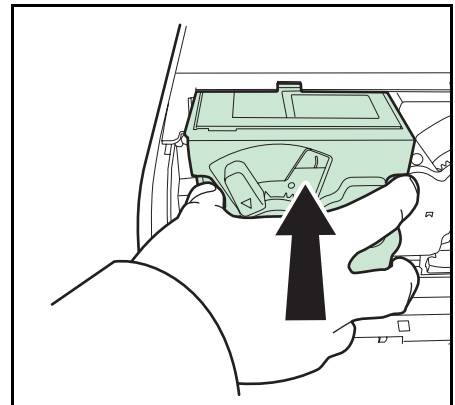


- 5** Take the new toner container out of the toner kit.

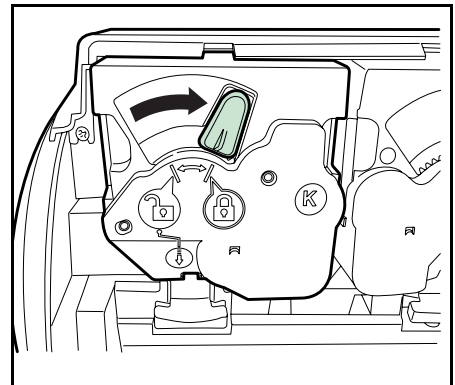
- 6** Shake the new toner container at least 10 times as shown in the figure in order to distribute the toner evenly inside the container.



- 7** Insert the new toner container into the printer. You will hear the container lock into place with a click when it is seated properly.



- 8** Turn the blue lock lever on the toner container towards the locked symbol.

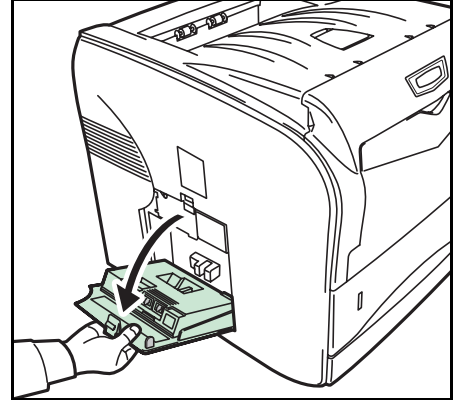


- 9** Close the front cover.
Proceed to the next section.

Replacing the Waste Toner Box

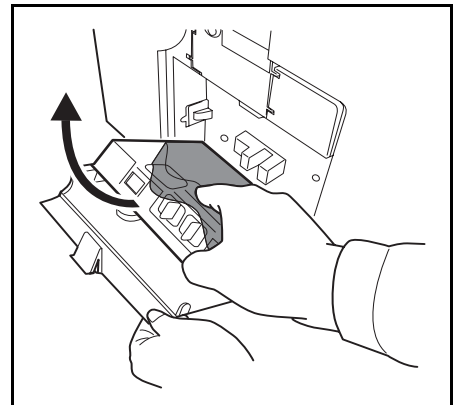
When replacing the toner container, the used waste toner box in the printer should also be replaced with the new one from the new toner kit. The two waste toner boxes are included with the black toner kit. The printer will not operate without replacing the waste toner box.

- 1 Open the left cover.

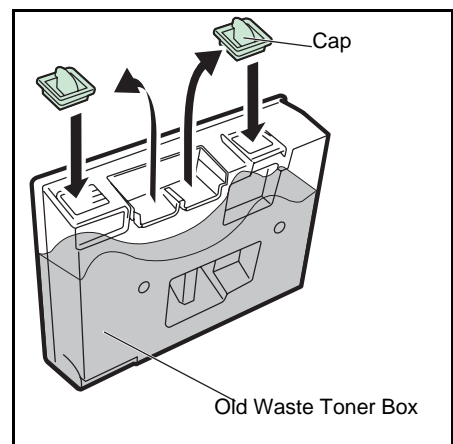


- 2 Gently remove the waste toner box.

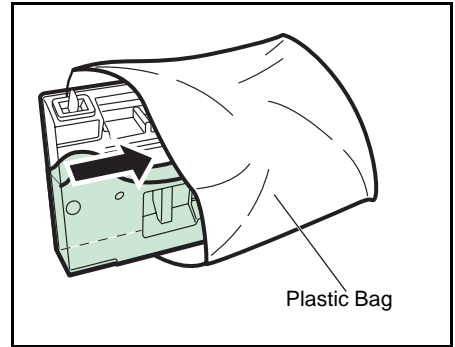
NOTE: Remove the waste toner box as gently as possible so as not to scatter the toner inside. Do not let the opening of the waste toner box face downward.



- 3 Close the cap to the old waste toner box after removing the box from the printer.



- 4** To prevent toner from spilling, put the old waste toner box in the plastic bag (contained in the toner kit) and discard it later according to the local code or regulations for waste disposal.



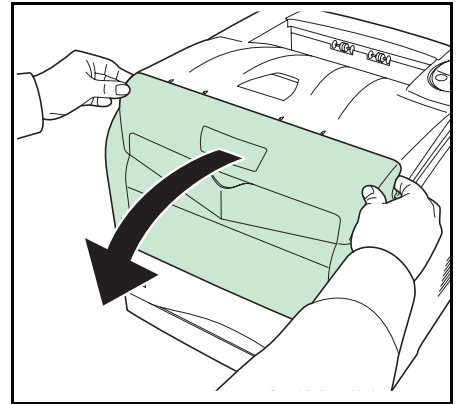
- 5** Insert the new waste toner box and close the left cover.

After replacing the toner containers and the waste toner box, clean the internal parts. For instructions, refer to *Cleaning the Neighboring Part of the Toner Container* on page 4-9 and *Cleaning the Paper Transfer Unit* on page 4-10.

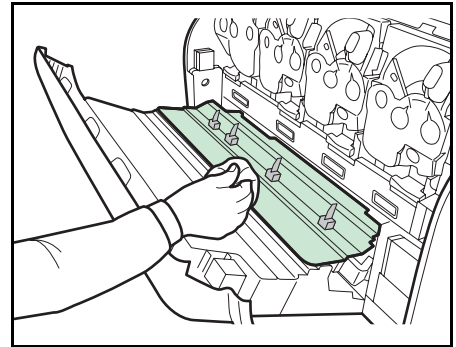
Cleaning the Neighboring Part of the Toner Container

To keep the interior of the printer clean, clean the neighboring part of the toner container.

- 1** Open the front cover.



- 2** Use a lint free cloth to wipe away the neighboring part of the toner container.



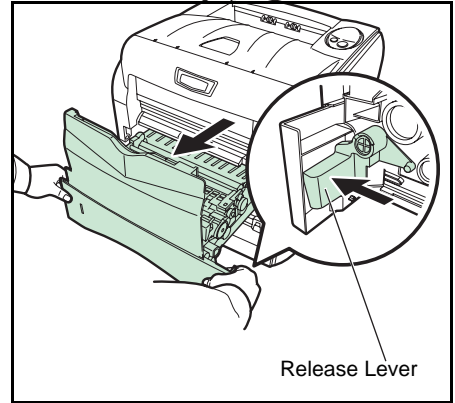
- 3** Close the front cover.

Cleaning the Paper Transfer Unit

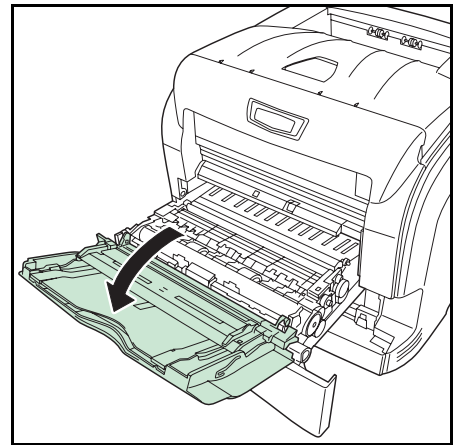
Print problems such as soiling of the reverse side of printed pages may occur if the paper transfer unit becomes dirty. To clean the paper transfer unit, you must use the cleaning cloth included in the toner kit.

- 1** While pulling the green release lever, pull out the paper transfer unit.

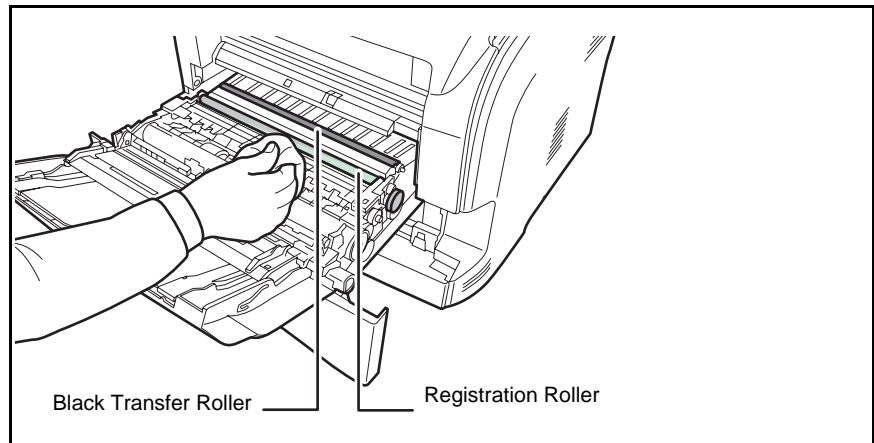
NOTE: When you pull out the transfer unit altogether with the paper cassette, a bottom plate of the paper cassette may lift. Push the bottom plate down until it locks.



- 2** Fold forward the cover of the transfer unit.



- 3 Wipe away the paper dust on the registration roller (metal) using the lint free cloth.



IMPORTANT: Be careful not to touch the black transfer roller as this may adversely affect print quality.

- 4 Push the paper transfer unit back in completely.

Prolonged Non-Use and Moving the Printer

Prolonged Non-use

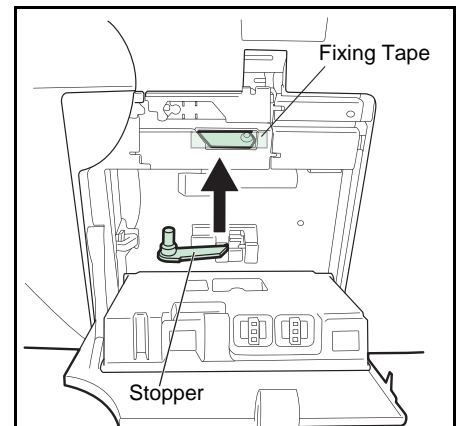
If you ever leave the printer unused for a long period of time, remove the power cord from the wall outlet.

We recommend you consult with your dealer about the additional actions you should take to avoid possible damage that may occur when the printer is used next time.

Moving the Printer

When you move the printer:

- Move it gently.
- Keep it as level as possible to avoid spilling toner inside the printer.
- Attach a stopper to the left side of the printer with fixing tape as shown on the right. The stopper is attached near the waste toner box after unpacking the printer.



IMPORTANT: Be sure to consult a service technician before attempting long-distance transportation of the printer.

5 Troubleshooting

This chapter contains explanations on the following topics:

- General Guidelines..... 5-2
- Print Quality Problems..... 5-4
- Clearing Paper Jams..... 5-7

If a problem cannot be corrected, contact the nearest service technician.

General Guidelines

The table below provides basic solutions for problems you may encounter with the printer. We suggest you consult this table to troubleshoot the problems before calling for service repairs.

Symptom	Check Items	Corrective Action
The printer will not print from the computer	Check the Ready indicator.	Using the information on <i>page 1-5</i> , check if an error has occurred and clear the error.
	Check if a status page can be printed.	If the status page was printed successfully, there may be a problem with the connection to the computer. Refer to the <i>Installation Guide</i> and check the connection.
	Check that the indicators display in a recognized combination. Refer to <i>page 1-5</i> for further information.	Turn the power switch Off (O) and then On () again. Print the job again.
Print quality is poor		Refer to <i>page 5-4</i> for information.
Paper is jammed		Refer to <i>page 5-7</i> for information on clearing paper jams.
The indicators are off and the fan is not working	Check the power cord.	Connect both ends of the power cord securely. Try replacing the power cord. Refer to <i>Installation Guide</i> for information.
	Check the power switch is in the On () position.	Refer to the <i>Installation Guide</i> for more information.
The printer prints a status page but data from the computer is not being printed	Check program files and application software.	Try printing another file or using another print command. If the problem occurs with a specific file or application, check the printer settings for that application.
	Check the interface cable.	Connect both ends of the interface cable securely. Try replacing the printer cable. Refer to the <i>Installation Guide</i> for more information.

Tips

Printer problems may be solved easily by following the tips below. When you have encountered a problem that cannot be solved following the guidelines above, try the following:

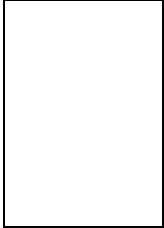


- Turn the printer power off and wait for several seconds. Then, turn on the printer.
- Restart the computer you are using to send print jobs to the printer.

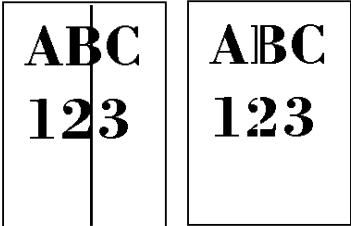
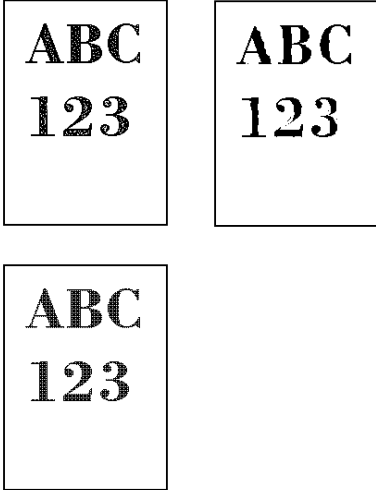
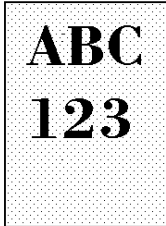
- Obtain and use the latest version of the printer driver. The latest versions of printer drivers and utilities are available at:
<http://www.kyoceramita.com/download/>.
- Make sure that the procedures for printing are correctly followed in the application software. Consult the documentation supplied with the application software.

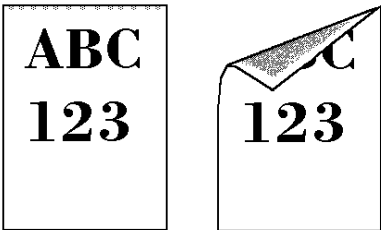
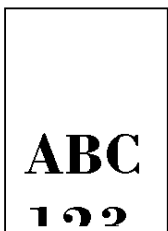
Print Quality Problems

The tables and diagrams in the following sections define print quality problems and the corrective action you can conduct to solve the problems. Some solutions may require cleaning or replacing parts of the printer.

If the suggested corrective action will not solve the problem, call for service.

Printed Results	Corrective Action
<p>Completely blank printout</p> 	<p>Verify that the application software is being used correctly. Even if the problem is not solved, contact your service technician.</p>
<p>Full single-color printout</p> 	<p>Contact your service technician.</p>
<p>Single-color printout with unwanted additional color</p> 	<p>Contact your service technician.</p>

Printed Results	Corrective Action
<p>Vertical streaks</p> 	<p>Refresh drum. Perform the following procedures on the operation panel and try cleaning the drum surface using the printer's built-in cleaning system.</p> <ol style="list-style-type: none"> 1 Press and hold [GO] and [Cancel] for at least 3 seconds when the Ready indicator lights up. All indicators flash slowly. 2 Press [Cancel]. The Attention, Data, and Ready indicators flash slowly, and toner indicator (K) lights up. 3 Press [GO]. Drum refreshing starts. The toner indicators light and flash in order of K, C, M, and Y. Drum refreshing stops after approx.4 minutes, and the Ready indicator lights up. <p>If the corrective action above will not solve the problem, contact your service technician.</p>
<p>Faint or blurred printing</p> 	<p>Make sure the paper type setting is for the correct the paper being used.</p> <p>Try adjusting the color control settings using the printer driver.</p> <p>Check the EcoPrint setting. When the PDL setting is KPDL and the EcoPrint setting is 75% or 50% in the printer driver, turn EcoPrint Off.</p> <p>Refresh drum. Perform the following procedures on the operation panel and try cleaning the drum surface using the printer's built-in cleaning system.</p> <ol style="list-style-type: none"> 1 Press and hold [GO] and [Cancel] for at least 3 seconds when the Ready indicator lights up. All indicators flash slowly. 2 Press [Cancel]. The Attention, Data, and Ready indicators flash slowly, and toner indicator (K) lights up. 3 Press [GO]. Drum refreshing starts. The toner indicators light and flash in order of K, C, M, and Y. Drum refreshing stops after approx.4 minutes, and the Ready indicator lights up. <p>If color difference occurs in the printouts, contact a service technician.</p>
<p>Gray background</p> 	<p>If the toner indicator (K/C/M/Y) flashes, install a new toner kit. To replace the toner container, refer to <i>Toner Container Replacement on page 4-3</i>. If color difference occurs in the printouts, contact a service technician.</p>

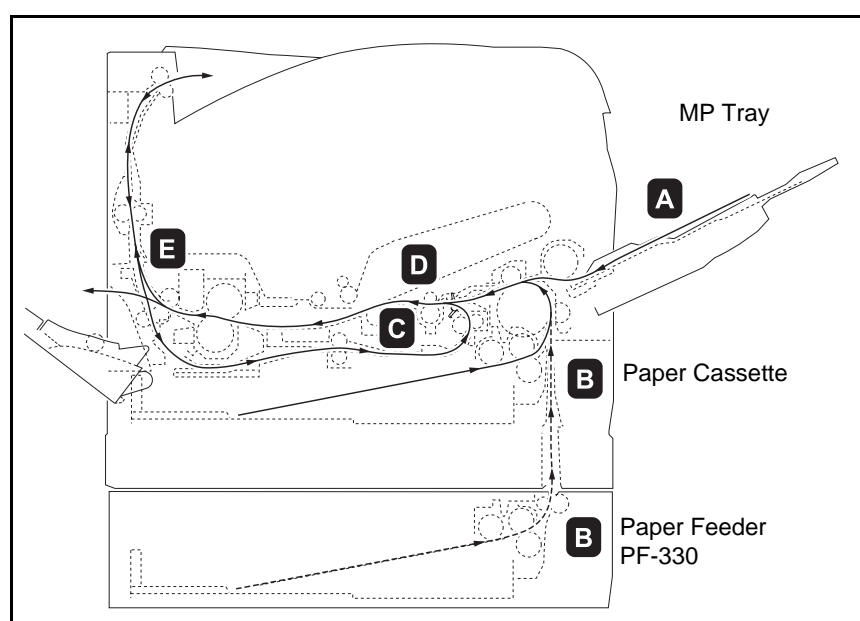
Printed Results	Corrective Action
<p data-bbox="156 264 596 327">Dirt on the top edge or back of the paper</p> <div data-bbox="162 349 545 577">  </div>	<p data-bbox="647 264 979 295">Clean the registration roller.</p> <hr/> <p data-bbox="647 318 1404 380">Check the transfer roller. If the transfer roller is dirty with toner, try printing several pages.</p>
<p data-bbox="156 631 526 694">Printing incomplete or out of position</p> <div data-bbox="162 716 331 945">  </div>	<p data-bbox="647 631 1362 694">Check that the printing settings are correct in the application software and the printer driver.</p> <hr/> <p data-bbox="647 716 960 748">Refer to <i>Tips on page 5-2</i>.</p>

Clearing Paper Jams

If paper jams in the paper transport system, or no paper sheets are fed at all, the printer automatically goes offline, and the attention indicator will flash rapidly. *KM-NET for Clients* or *COMMAND CENTER* can indicate the location of the paper jam (the component where the paper jam has occurred). Remove the paper jam. After removing the paper jam, the printer will resume printing.

Possible Paper Jam Locations

The figure below shows the printer's paper paths including the optional devices. The locations where paper jams might occur are also shown here, with each location explained in the table below. Paper jams can occur in more than one component on the paper paths.



Paper jam location	Description	Reference page
A	Paper jam at the MP tray.	<i>page 5-9</i>
B	Paper jam at the paper cassette. The cassette number can be 1.	<i>page 5-9</i>
C	Paper jam inside the duplex section.	<i>page 5-10</i>
D	Paper jam inside the paper transfer unit.	<i>page 5-11</i>
E	Paper jam inside the fuser unit.	<i>page 5-12</i>

General considerations for clearing jams

Bear in mind the following considerations when attempting paper jam removal:



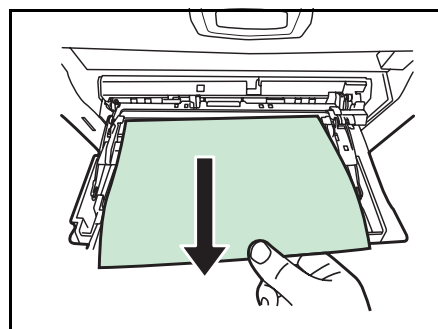
CAUTION: When pulling the paper, pull it gently so as not to tear it. Torn pieces of paper are difficult to remove and may be easily overlooked, deterring the paper jam recovery.

- If paper jams occur frequently, try using a different type of paper, replace the paper with paper from another ream, or flip the paper stack over. The printer may have problems if paper jams recur after the paper is replaced.
- Whether or not the jammed pages are reproduced normally after printing is resumed, depends on the location of the paper jam.

MP Tray

Paper is jammed at the MP tray. Remove the jammed paper using the procedure given below.

- 1 Remove the paper jammed at the MP tray.

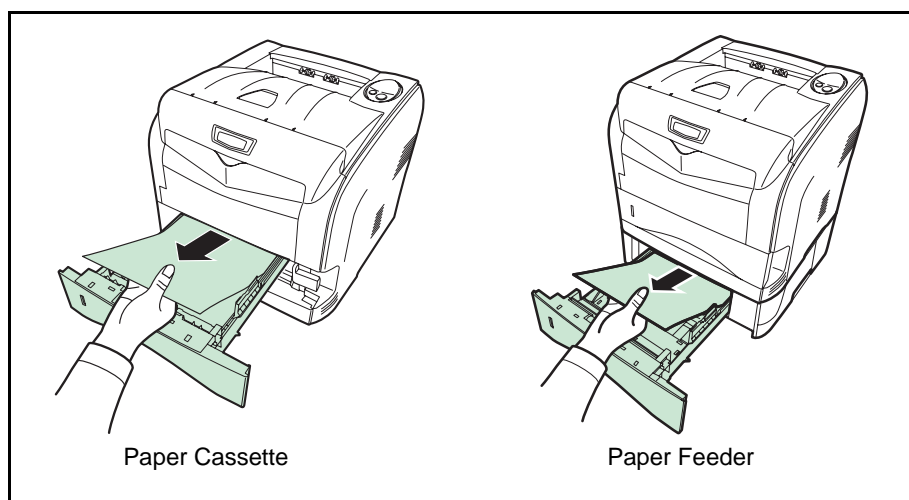


IMPORTANT: Do not try to remove paper that has already been partially fed. Proceed to **Paper Transfer Unit** on page 5-11.

- 2 Open and close the front cover to clear the error and the attention indicator will stop flashing.

Paper Cassette/Paper Feeder

- 1 Pull out the paper cassette or optional paper feeder.
- 2 Remove any partially fed paper.



Check to see if paper is loaded correctly. If not, reload the paper.

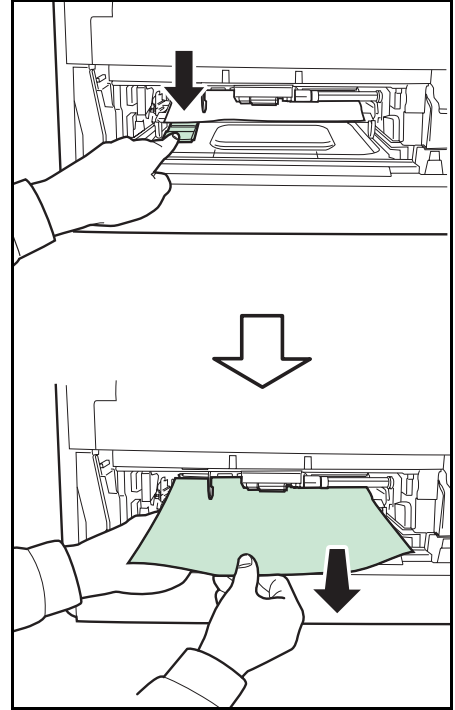
- 3 Push the paper cassette back in securely. The printer resumes printing.

IMPORTANT: If the jammed paper appears inside of the printer, proceed to **Paper Transfer Unit** on page 5-11.

Duplexer

Paper is jammed in the duplex section. Remove the jammed paper using the procedure given below.

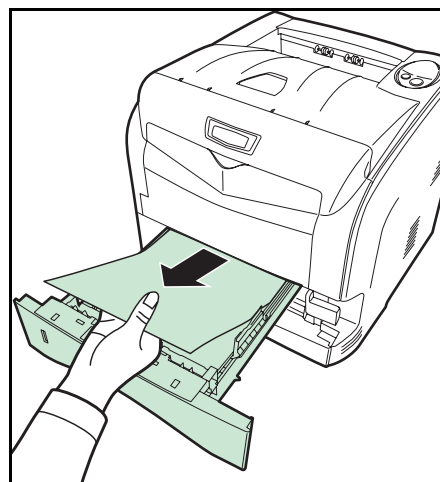
- 1** Pull the paper cassette all the way out of the printer.
- 2** Open the duplexer's cover and remove any jammed paper.



- 3** Insert the paper cassette into the slot in the printer. The printer resumes printing.

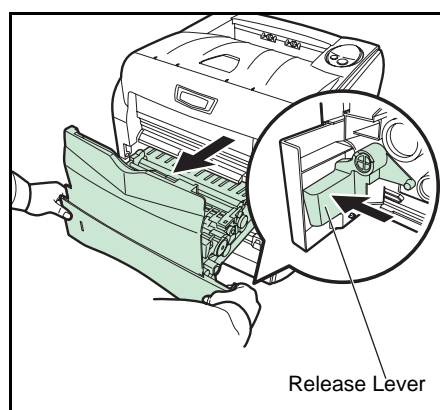
Paper Transfer Unit

- 1 Pull out the paper cassette and remove the jammed paper.

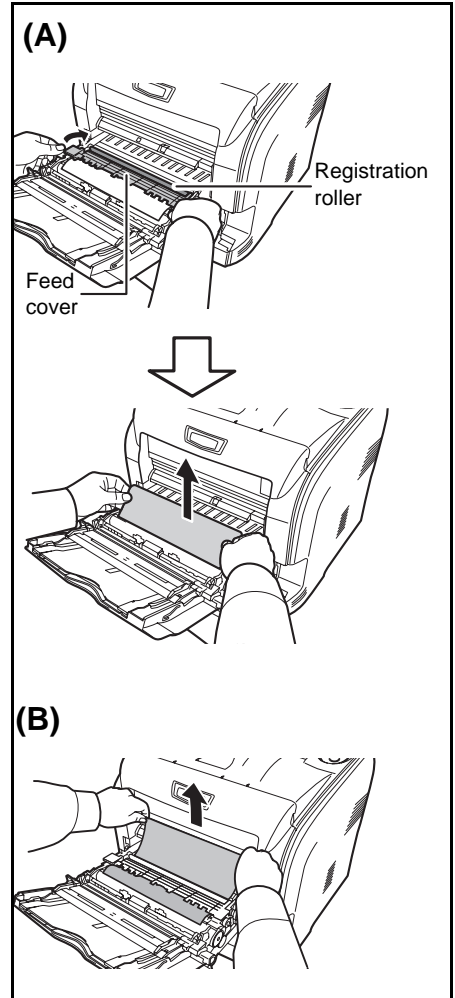


- 2 While pulling the green release lever, pull out the paper transfer unit.

NOTE: When you pull out the transfer unit together with the paper cassette, a bottom plate of the paper cassette may lift. Push the bottom plate down until it locks.



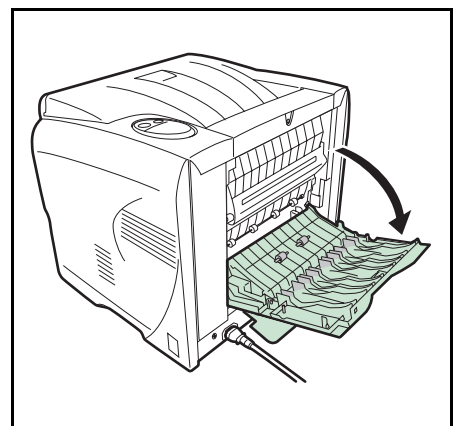
- 3** If paper is jammed as shown in A, remove the paper by lifting the feed cover and pulling the paper from the center of it. If paper is jammed as shown in B, remove the paper by pulling the edge of it.



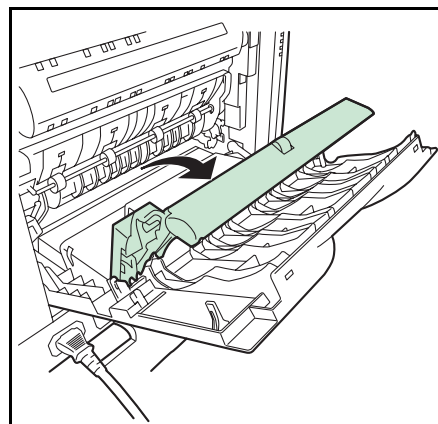
- 4** Push the paper transfer unit back in completely. The printer warms up and resumes printing.

Fuser Unit

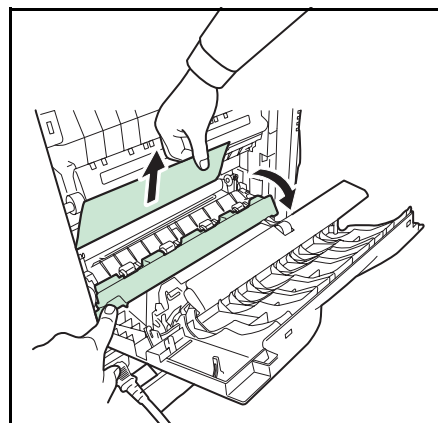
- 1** If paper is not completely ejected into the output tray, open the rear cover.



- 2 Pull the rear paper path and open it.



- 3 Open the fuser cover and remove the jammed paper by pulling it out.



CAUTION: The fuser unit inside the printer is hot. Do not touch it, as it may result in burn injury.

- 4 Close the fuser cover, rear paper path, rear cover, and rear subcover. The printer warms up and resumes printing.

6 Options

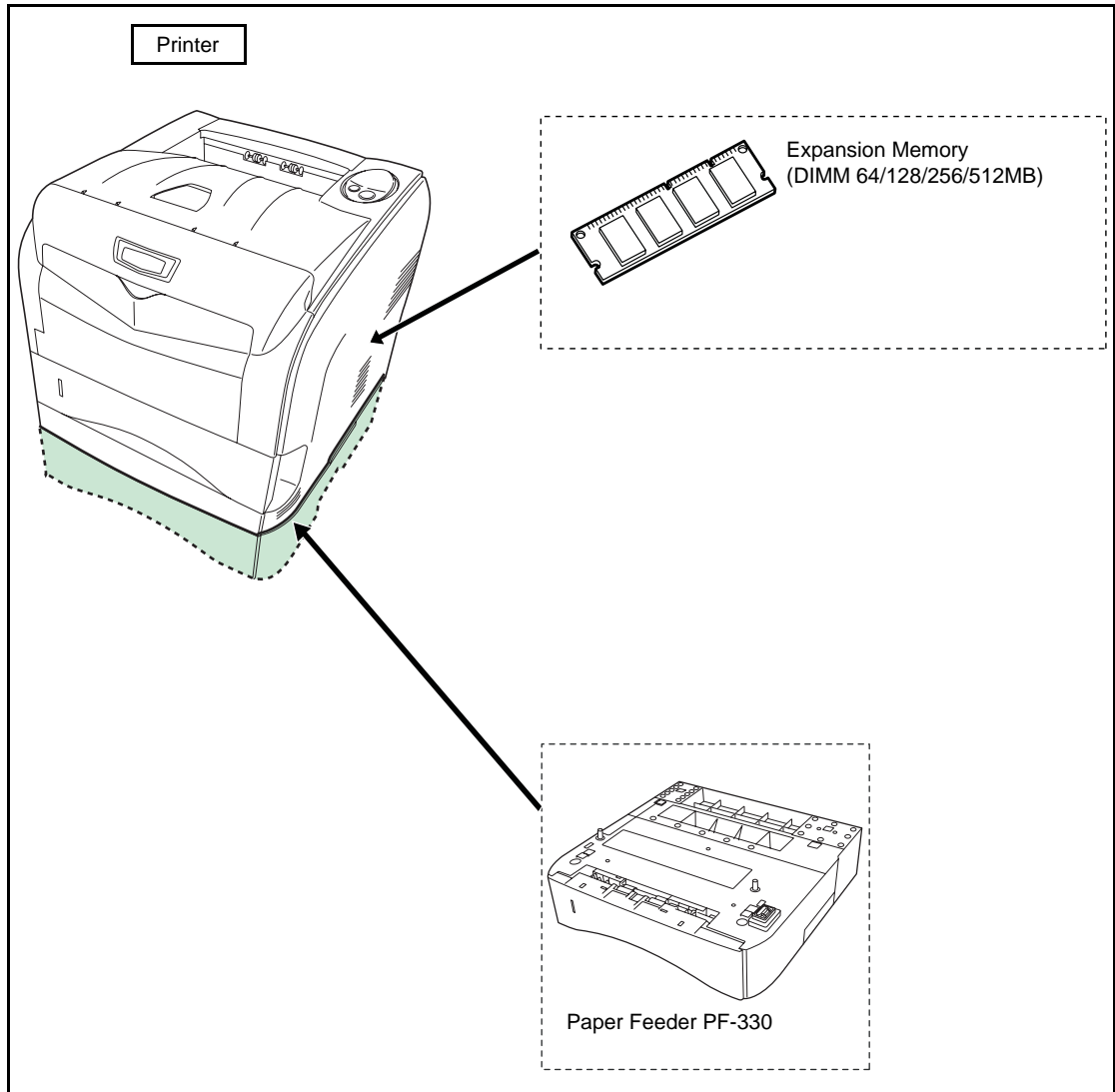
This chapter contains explanations on the following topics:

- General Information..... 6-2
- Expansion Memory Modules 6-3
- PF-330 Paper Feeder..... 6-6

For availability of the options, consult a service technician.

General Information

The printers have the following options available to satisfy your printing requirements. For instructions on installing individual options, refer to the documentation included with the option. Some options are explained in the following sections..



Expansion Memory Modules

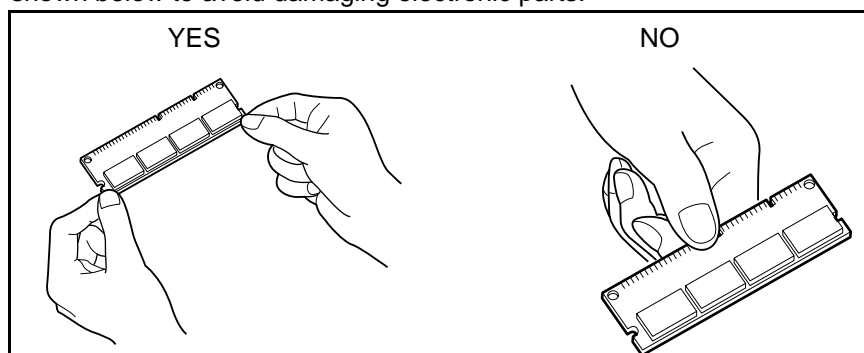
To expand the printer memory for more complex print jobs and faster print speed, you can plug in optional memory module (dual in line memory module) in the memory slot provided on the printer main controller board. You can select additional memory module from 64, 128, 256 or 512MB. The maximum memory size is 576MB.

NOTE: The expansion memory should only be installed by your service technician. We shall not be liable for any damages caused by improper installation of expansion memory.

Precautions for handling the printer's main controller board and memory module.

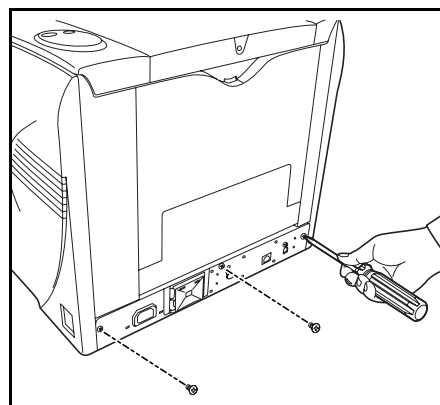
To protect electronic parts, discharge static electricity from your body by touching a water pipe (faucet) or other large metal object before handling the memory module. Or, wear an antistatic wrist strap, if possible, when you install the memory module.

Always hold the main controller board or a memory module by its edges as shown below to avoid damaging electronic parts.

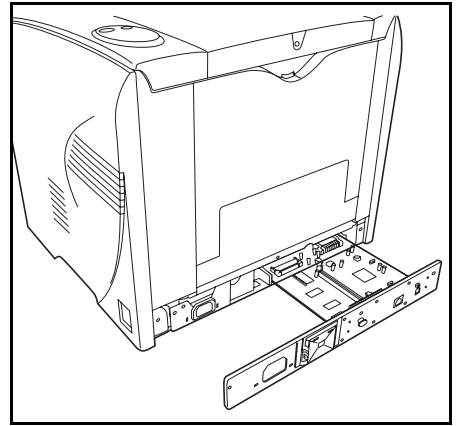


Installing the Memory Module

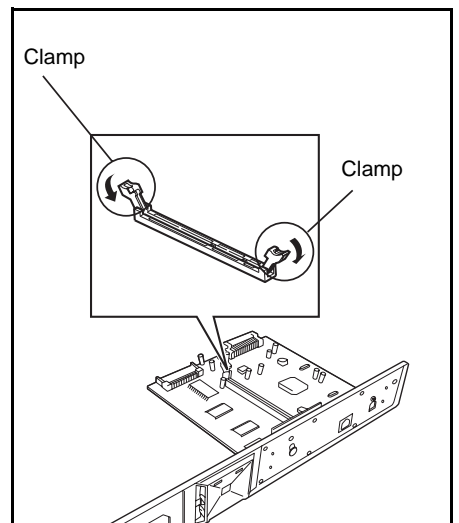
- 1** Turn off the printer and disconnect the power cord and printer cable.
- 2** Remove three screws from the rear of the printer.



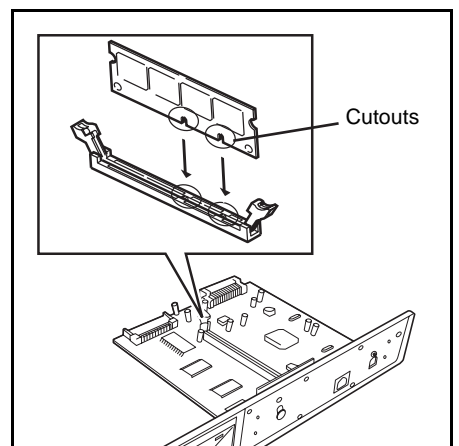
- 3** Pull out the main controller board gently.



- 4** Push out the clamps on both ends of the memory socket on the main controller board.



- 5** Remove the memory module from its package. Aligning the cutouts of the memory module with the matching keys of the socket, carefully plug the memory module into the memory socket until it clicks in place.



- 6** Push the two socket clamps to secure the memory module.

- 7** After you finish installing the memory module, reinstall the main controller board and fasten it with screws.

Removing a Memory Module

To remove a memory module, remove three screws from the rear of the printer, pull out the main controller board gently, then carefully push out the two socket clamps. Ease the memory module out of the socket to remove.

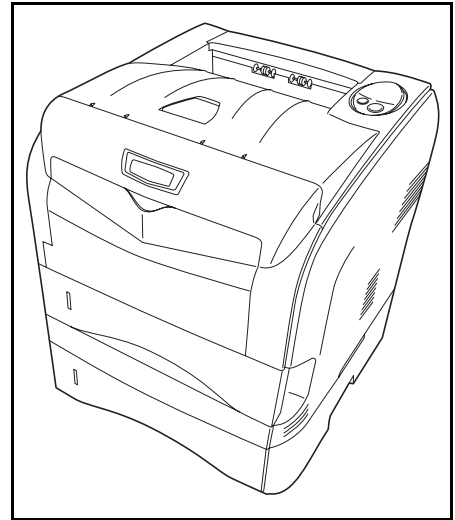
Testing the expanded memory

To verify that the memory module is working properly, test it by printing a status page.

PF-330 Paper Feeder

Holds approximately 250 sheets of A5 to A4/Letter and Legal size paper. Up to one paper feeder can be attached to the bottom of the printer.

The PF-330 paper feeder allows you to add one more paper cassette to the bottom of the printer for continuous feeding of a large volume of paper. Each paper cassette can hold up to approximately 250 sheets of ISO A4, ISO A5, JIS B5, Letter, or Legal size (80g/m²) paper. This feeder is attached at the bottom of the printer as shown on the right.



7 Specifications

NOTE: Specifications are subject to change without notice.

Item	Description									
Type	Desktop									
Printing Method	Electrostatic four color (CMYK) printing using Advanced Beam Array									
Paper Weight - Cassette	60 to 105 g/m ² (Duplex: 60 to 90 g/m ²)									
- MP Tray	80 to 220 g/m ²									
Paper Type - Cassette	Plain, Preprinted, Bond, Recycled, Rough, Letterhead, Color, Prepunched, High quality, and Custom									
- MP Tray	Plain, Transparency, Preprinted, Labels, Bond, Recycled, Vellum, Rough, Letterhead, Color, Prepunched, Envelope, Cardstock, Coated, Thick, High quality, and Custom									
Paper Size - Cassette	Legal, Oficio II, Letter-R, Folio, ISO A4-R, JIS B5-R, ISO A5, 16K									
- MP Tray	Executive, Statement, Envelope #10, Envelope #9, Envelope Monarch, Envelope #6, Envelope C5, Envelope DL, Legal, Oficio II, Letter-R, Folio, ISO A4-R, JIS B5-R, ISO B5-R, ISO A5, JIS B6, ISO A6, Hagaki, Ofuku-Hagaki, Youkei 2, Youkei 4, 16K, Custom (70 × 148 to 216 × 356mm (2-13/16 × 5-13/16 to 8-1/2 × 14 inches))									
Printing Speed - Simplex	<table> <thead> <tr> <th></th> <th>Monochrome</th> <th>Color</th> </tr> </thead> <tbody> <tr> <td>A4/Letter :</td> <td>24 ppm</td> <td>6 ppm</td> </tr> <tr> <td>A5 :</td> <td>12 ppm</td> <td>6 ppm</td> </tr> </tbody> </table>		Monochrome	Color	A4/Letter :	24 ppm	6 ppm	A5 :	12 ppm	6 ppm
	Monochrome	Color								
A4/Letter :	24 ppm	6 ppm								
A5 :	12 ppm	6 ppm								
- Duplex	<table> <tbody> <tr> <td>A4/Letter:</td> <td>4.8 ppm</td> <td>3 ppm</td> </tr> <tr> <td>A5:</td> <td>4 ppm</td> <td>3 ppm</td> </tr> </tbody> </table>	A4/Letter:	4.8 ppm	3 ppm	A5:	4 ppm	3 ppm			
A4/Letter:	4.8 ppm	3 ppm								
A5:	4 ppm	3 ppm								
First Print Out (At polygon motor steady-state)	10 seconds or less (monochrome) 20 seconds or less (color)									
Warm-up Time (22°C, 60%RH) - Power on	45 seconds or less									
- Sleep	45 seconds or less									
Resolution	600dpi									

Item	Description
Paper Capacity - Cassette	250 sheets (80g/m ²)
- MP Tray	50 sheets (80g/m ²)
Output Tray Capacity - Top Tray	100 sheets (80g/m ²)
Monthly Duty - Average	1,000 pages
- Maximum	30,000 pages
Operation Environment	Temperature: 10 to 32.5 °C (50 to 90.5°F) Relative Humidity: 15 to 80% Altitude: 2,500m (8202 feet) maximum Brightness: 1,500lux maximum
Dimensions (W × D × H)	415 × 415 × 360mm 16 11/32 × 16 11/32 × 14 11/64"
Weight (without toner container and waste toner box)	26kg/57.3 lb
Controller	PowerPC 440 400MHz
Supported OS	Microsoft Windows 95/98/Me/2000/XP Microsoft Windows NT4.0 Microsoft Windows Server 2003 Apple Macintosh OS 8 Apple Macintosh OS 9 Apple Macintosh OS X
Interface - Standard	Hi-Speed USB for printer connections: 1 Network: 1, 10BASE-T/100BASE-TX
Memory - Standard - Maximum	64MB 576MB
Option	Paper feeder (PF-330)
Power Source	120 V AC, 60 Hz, 8.0A/220 to 240 V AC, 50 HZ, 4.5 A
Power Consumption	Maximum: 1000 W During printing: 311 W or less (313 W or less, with PF-330) During standby: 71 W or less During sleep mode: 6 W or less (7 W or less, with PF-330)
Operating noise (in accordance with EN ISO7779 [Bystander Position, sound pressure level at the front])	During printing: LpA = 55dB (A) During standby: LpA = 40dB (A) During sleep mode: immeasurably low

Index

A

Adhesive label **2-8**
Attention indicator **1-5**
 operation panel **1-4**

C

Cancel key **1-6**
 operation panel **1-4**
Cassette
 paper size **2-4**
Cassette
 basis weight **2-5**
 paper size **7-1**
 paper type **7-1**
 paper weight **7-1**
Caution labels **Legal and Safety-xvi**
CF card **6-6**
Changing or verifying the network settings
3-4
Cleaning
 neighboring part of the toner container
 4-9
 paper transfer unit **4-10**
Clearing paper jams
 Duplexer **5-10**
 fuser unit **5-12**
 MP tray **5-9**
 paper cassette **5-9**
 paper feeder **5-9**
 paper transfer unit **5-11**
Colored paper **2-10**
COMMAND CENTER **3-4**
Components
 at the front of the printer **1-2**
 at the left of the printer **1-2**
 at the rear of the printer **1-3**
 internal **1-2**
Configuring printer settings **3-7**
 KM-NET for Clients **3-7**
Conventions **Legal and Safety-xxiii**

D

Data indicator **1-5**
 operation panel **1-4**
Duplexer
 clearing paper jams **5-10**

E

Envelope **2-10**
Expanded memory
 verifying **6-5**

F

Face up tray
 components **1-3**
Fuser unit
 change the thickness of paper **2-21**
 clearing paper jams **5-12**

G

GO key **1-6**
 operation panel **1-4**

H

Handling
 Main controller board **6-3**
 Memory module **6-3**

I

Indicator
 At error **1-5**
Indicators
 Ready, Data, Attention, Toner **1-5**

K

Key
 At error **1-6**

- Cancel **1-6**
- GO **1-6**
- Keys
 - GO, Cancel **1-6**
- KM-NET for Clients
 - configuring printer settings **3-7**

L

- Label **2-8**
- Left cover
 - components **1-2**
- Loading Paper
 - Cassette **2-13**
 - MP (Multi-Purpose) tray **2-17**
- Loading software **3-6**
- Loading thick paper and envelopes
 - MP (Multi-purpose) tray **2-19**
- Lock lever **4-5**

M

- Machine parts **1-1**
- Main controller board
 - expanding memory **6-3**
- Maintenance
 - Toner container replacement, cleaning **4-1**
- Memory
 - expanding memory **6-3**
 - installing memory modules **6-3**
- Memory module
 - Removing **6-5**
- Message display
 - for replacing toner containers **4-3**
- Moving the printer **4-12**
- MP Tray
 - paper type **7-1**
- MP tray
 - basis weight **2-5**
 - clearing paper jams **5-9**
 - components **1-2**
 - loading paper **2-17**
 - loading thick paper and envelopes **2-19**
 - minimum and maximum paper sizes **2-3**
 - paper size **7-1**
 - paper sizes **2-4**
 - paper specifications **2-2**

- paper type **2-12**
- paper weight **7-1**

N

- Network indicators
 - components **1-3**
- Network interface connector
 - components **1-3**
- non-use of printer for long period of time **4-12**
- Number of copies
 - entering the number of prints required **3-8**

O

- Offline **1-5**
- Online **1-5**
- Operation panel
 - components **1-2**
 - indicators, keys, overview **1-4**
 - refreshing drum **5-5**
- Options **6-2**

P

- Paper
 - general guidelines **2-2**
 - loading **2-13**
 - minimum and maximum sizes **2-3**
- Paper cassette
 - clearing paper jam **5-11**
 - clearing paper jams **5-9**
 - components **1-2**
 - loading paper **2-13**
 - minimum and maximum page sizes **2-3**
- Paper feeder
 - clearing paper jams **5-9**
 - diagrammed **6-6**
 - PF-330 **6-6**
- Paper gauge
 - loading paper into the cassette **2-16**
- Paper Input
 - Specifications **2-2**
- Paper jam **1-5**
 - general considerations **5-8**
 - messages and corrective actions, diagrammed **5-11**
 - possible locations, diagrammed **5-7**

- Paper jams
 - clearing **5-7**
- Paper length guide
 - loading paper **2-14**
- Paper sizes
 - MP tray, Casette **2-4**
- Paper Specifications **2-2**
- Paper stopper
 - components **1-2**
- Paper transfer unit
 - changing the thickness of paper **2-19, 4-10, 5-11**
 - cleaning **4-10**
- Paper type **2-12**
- Paper weight **2-5**
- Parallel interface
 - connector, location **1-3**
- PF **6-6**
- PF-330
 - paper feeder(option) **6-6**
- Postcard **2-9**
- Power cord connector
 - components **1-3**
- Power switch
 - components **1-3**
- Precautions for use **Legal and Safety-xix**
- Preprinted paper **2-11**
- Printer driver
 - configuring the printer settings **3-7**
 - EcoPrint setting **5-5**
 - loading software **3-6**
- Printing
 - from application software **3-8**
 - status page **1-6**
- Printing problems
 - print quality problems, blank printing, etc. **5-4**
 - table of general guidelines **5-2**
- Printing service status page **1-6**
- Prolonged non-use **4-12**

R

- Ready indicator **1-5**
 - operation panel **1-4**
- Rear cover

- components **1-3**
- Rear subcover
 - components **1-3**
- Recycled paper **2-11**
- Removing a memory module **6-5**
- Resolution
 - specifications **7-1**
- Resolving IP address
 - COMMAND CENTER **3-4**

S

- Selecting the right paper **2-4**
- Service status page
 - how to print **1-6**
- Sleep mode **1-5**
- Special paper **2-7**
- Specifications
 - Paper **2-2**
- Starter container
 - toner container **4-3**
- Status page **5-2**
 - how to print **1-6**

T

- Testing the expanded memory **6-5**
- Thick paper **2-10**
- Toner container
 - components **1-2**
 - how to replace **4-4**
- Toner containers
 - replacement **4-3**
 - replacement, indicators **4-3**
 - service life **4-3**
- Toner indicator **1-5**
 - operation panel **1-4**
- Toner kit
 - toner container **4-3**
- Top cover
 - components **1-2**
- Top tray
 - components **1-2**
- Transfer roller **4-11**
- Transparency **2-7**
- Troubleshooting **5-1**

U

USB interface connector
components **1-3**

W

Waste toner box

components **1-2**
how to replace **4-7**
Width guides
loading paper **2-14**
Wiper cloth
cleaning registration roller **4-11**

**QUALITY
CERTIFICATE**

This machine has passed
all quality controls and
final inspection.

KYOCERA MITA AMERICA, INC.

Headquarters:

225 Sand Road,
Fairfield, New Jersey 07004-0008
TEL : (973) 808-8444
FAX : (973) 882-6000

New York Branch:

1410 Broadway 23rd floor
New York, NY 10018
TEL : (917) 286-5400
FAX : (917) 286-5402

Northeastern Region:

225 Sand Road,
Fairfield, New Jersey 07004-0008
TEL : (973) 808-8444
FAX : (973) 882-4401

Midwestern Region:

201 Hansen Court Suite 119
Wood Dale, Illinois 60191
TEL : (630) 238-9982
FAX : (630) 238-9487

Western Region:

14101 Alton Parkway,
Irvine, California 92618-7006
TEL : (949) 457-9000
FAX : (949) 457-9119

Southeastern Region:

1500 Oakbrook Drive,
Norcross, Georgia 30093
TEL : (770) 729-9786
FAX : (770) 729-9873

Southwestern Region:

2825 West Story Road,
Irving, Texas 75038-5299
TEL : (972) 550-8987
FAX : (972) 252-9786

National Operation Center & National Training Center:

2825 West Story Road,
Irving, Texas 75038-5299
TEL : (972) 659-0055
FAX : (972) 570-5816

Latin America Division:

8240 N.W. 52nd. Terrace Dawson Building,
Suite 108 Miami, Florida 33166
TEL : (305) 421-6640
FAX : (305) 421-6666

KYOCERA MITA CANADA, LTD.

6120 Kestrel Road, Mississauga,
Ontario L5T 1S8, Canada
TEL : (905) 670-4425
FAX : (905) 670-8116

KYOCERA MITA MEXICO, S.A. DE C.V.

Av. 16 de Septiembre #407
Col. Santa Inés,
Azcapotzalco México,
D.F. 02130, México
TEL : (55) 5383-2741
FAX : (55) 5383-7804

KYOCERA MITA EUROPE B.V.

Hoeksteen 40, 2132 MS Hoofddorp,
The Netherlands
Phone: +31.20.654.0000
Home page: <http://www.kyoceramita-europe.com>
Email: info@kyoceramita-europe.com

KYOCERA MITA NEDERLAND B.V.
Beechavenue 25, 1119RA Schiphol-Rijk
The Netherlands
Phone: +31.20.58.77.200

KYOCERA MITA (UK) LTD
8 Beacontree Plaza
Gillette Way Reading Berks RG2 0BS,
U.K.
Phone: +44.1189.311.500

KYOCERA MITA ITALIA S.p.A.
Via G. Verdi, 89 / 91, 20063 Cernusco s/N
Milano, Italy
Phone: +39.02.92179.1

S.A. KYOCERA MITA BELGIUM N.V.
Hermesstraat 8A, 1930 Zaventem,
Belgium
Phone: +32.2.720.9270

KYOCERA MITA FRANCE S.A.
Parc Les Algorithmes Saint Aubin
91194 GIF-SUR-YVETTE,
France
Phone: +33.1.6985.2600

KYOCERA MITA ESPAÑA S.A.
Edificio Kyocera, Avda de Manacor No. 2,
28290 Las Matas (Madrid),
Spain
Phone: +34.91.631.8392

KYOCERA MITA FINLAND OY
Kirvesmiehenkatu 4, 00880 Helsinki,
Finland
Phone: +358.9.4780.5200

KYOCERA MITA (SCHWEIZ)
Hohlstrasse 614, 8048 Zürich
Switzerland
Phone: +41.1.908.4949

KYOCERA MITA DEUTSCHLAND GMBH
Mollsfeld 12, 40670 Meerbusch,
Germany
Phone: +49.2159.918.0

KYOCERA MITA GMBH AUSTRIA
Eduard-Kittenberger-Gasse 95,
1230 Wien,
Austria
Phone: +43.1.86338.210

KYOCERA MITA SVENSKA AB
Vretenvägen 2, 6tr, 17 154 Solna,
Sweden
Phone: +46.8.546.55000

KYOCERA MITA NORGE
Postboks 150 Oppsal, NO 0619 Oslo
Olaf Helsetsvei 6, NO 0694 Oslo,
Norway
Phone: +47.22.62.73.00

KYOCERA MITA DANMARK A/S
Ejby Industrivej 1, DK-2600 Glostrup,
Denmark
Phone: +45.5687.1100

KYOCERA MITA PORTUGAL LDA.
Rua do Centro Cultural, 41 (Alvalade) 1700-106 Lisbon,
Portugal
Phone: +351.21.842.9100

KYOCERA MITA SOUTH AFRICA (PTY) LTD.
527 Kyalami Boulevard,
Kyalami Business Park Midrand,
South Africa
Phone: +27.(0)11.540.2600

KYOCERA MITA AMERICA, INC.

Headquarters:
225 Sand Road,
Fairfield, New Jersey 07004-0008,
U.S.A.
Phone: (973) 808-8444

KYOCERA MITA AUSTRALIA PTY. LTD.
Level 3, 6-10 Talavera Road, North Ryde,
N.S.W. 2113 Australia
Phone: (02) 9888-9999

KYOCERA MITA NEW ZEALAND LTD.
1-3 Parkhead Place, Albany
P.O. Box 302 125 NHPC, Auckland,
New Zealand
Phone: (09) 415-4517

KYOCERA MITA (THAILAND) CORP., LTD.
9/209 Ratchada-Prachachem Road,
Bang Sue, Bangkok 10800, Thailand
Phone: (02) 586-0320

KYOCERA MITA SINGAPORE PTE LTD.
121 Genting Lane, 3rd Level,
Singapore 349572
Phone: 67418733

KYOCERA MITA HONG KONG LIMITED
11/F., Mita Centre,
552-566, Castle Peak Road,
Tsuen Wan, New Territories,
Hong Kong
Phone: 24297422

KYOCERA MITA TAIWAN Corporation.
7F-1~2, No.41, Lane 221, Gangchi Rd.
Neihu District, Taipei, Taiwan, 114. R.O.C.
Phone: (02) 87511560

KYOCERA MITA Corporation

2-28, 1-chome, Tamatsukuri, Chuo-ku
Osaka 540-8585, Japan
Phone: (06) 6764-3555
<http://www.kyoceramita.com>

©2006 KYOCERA MITA Corporation

 **KYOCERA** is a trademark of Kyocera Corporation

