



Full Height Turnstiles & Gates

We make access in
life smart and secure.

dormakaba 

Full Height Turnstiles and Gates

For reliable security.



Robust Full Height Turnstiles and Gates from dormakaba are especially suitable for securing the perimeter of buildings and property.

Contents

| | |
|----|--|
| 04 | Full Height Turnstiles and Gates |
| 06 | FTS-E01 /FTS-E02 Full Height Turnstiles |
| 07 | FTS-E06/FTS-E03 Full Height Turnstiles |
| 08 | FTS-E04/FTS-E05 Full Height Turnstiles |
| 09 | FTS-M02/FTS-M03 Full Height Turnstiles |
| 10 | FTS-M05 Full Height Turnstiles |
| 11 | FTS Series optional canopies |
| 13 | FTS Series options |
| 14 | Optional components |
| | Installation examples |
| 15 | FGE-M01 Full Height Gates |
| 16 | FGE-M01 optional canopies |
| 17 | FGE-M01 options |
| | FGE-M01 installation examples |
| 18 | Architectural and design consultation |
| 19 | Service and installation |

Entrance solutions by dormakaba

Security. Sustainability. Reliability.

dormakaba stands for security, sustainability and reliability. Our mission is to make the lives of our customers smart and secure. Holding true to our mission, we invest in innovation to develop entrance solutions that exceed your demands and expectations.

The commitment to develop innovative yet practical products is what differentiates dormakaba. Our full Height Turnstiles and Gates are powerful examples of our dedication to providing premium physical access systems that perform as designed throughout the life of your building.

"The commitment to develop innovative yet practical solutions is what differentiates dormakaba."

To ensure our entrance solutions perform at the highest level, we provide the most comprehensive offering of services in the industry. You can trust dormakaba for exceptional product support, including installation, retrofit, replacement and maintenance.

We will continue to deliver systems that define security and convenience. Together with first class service, on-going training and aftermarket sales support, our priority will always be adding value for our customers and esteem to our brands.



Full Height Turnstiles and Gates

Secure, durable, and modular.

The ideal solution for perimeter security

These robust Full Height Turnstiles and Gates are especially suitable for securing the perimeter of buildings and property. Modular versions enable individual combinations of multiple units. The end-point locking system developed by dormakaba prevents people from being trapped in the gates.

Versatility

dormakaba Full Height Turnstiles and Gates feature a modular design. Two, three, and four-winged units with straight or U-shaped bars can be combined. The same applies for units with bicycle doors, integrated doors, an emergency egress, or of resistance class WK2. The canopies fit with any of the single, multiple, or space-saving double units.

Minimal power consumption

The quiet low-energy drive consumes very little power and adapts to the speed of the person entering.

Safe passage

Turnstiles with integrated end-point clocking prevent people from being trapped or jammed. After release the turnstile may be stopped at any time and rotated backward, providing it has not yet completed half of its rotation. Once the turnstile has completed half of its rotary motion, the unit can only be exited in the released direction.

| | |
|-----------------|-----------------------|
| Throughput rate | = up to 20 per minute |
| Security level | = ●●●●○ |
| Comfort | = ●●●○○ |



Full Height Gate as goods entrance

The right combination of security, user comfort, and personal safety.



Full Height Gates in a matching design offer a fitting solution for ADA compliance.



Advantages of dormakaba Full Height Turnstiles and Gates

- Our end-point locking system prevents people from being trapped.
- Versions with integrated bicycle door.
- Full Height Gates for barrier-free access or as a goods entrance.
- An emergency egress function or in resistance class WK2.
- Space-saving double units.
- Modular combination of bars, canopies, guiding, and barrier elements.
- Lasting quality for indoor and outdoor applications.
- Turnstile column and bars made of stainless steel.
- Rotating speed adapts to the pedestrian.
- Low-energy drive.
- Low power consumption.
- Performance in the event of a power failure can be freely determined.
- Can be used in regions with harsh environmental conditions.
- Integrated random generator.
- Optional secondary identification for additional security.
- Spacing between shearing edges eliminates risk of injury.



Full Height Turnstile on pallet with integrated door allows controlled access to authorized laborers, offering construction site protection.



Full Height Turnstiles allow safe access to underground parking garage, securing vehicles and protecting residents and employees.



Additional functions include versions with Integrated bicycle door with power assist function.

FTS-E01 / FTS-E02

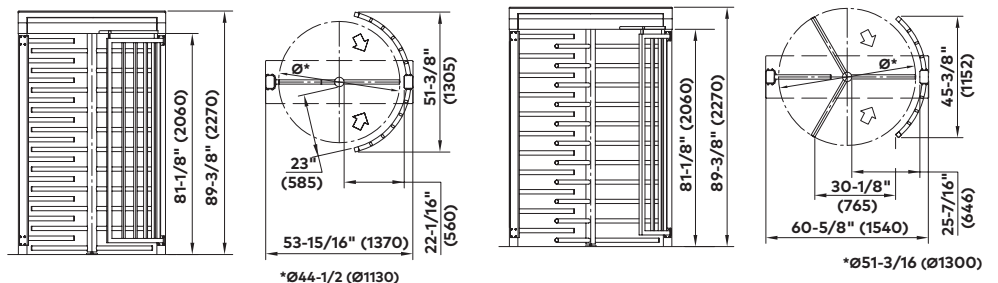
Full Height Turnstiles



| Standard units | FTS-E01 | FTS-E02 | Option |
|---|--|--|--------|
| Construction column diameter | 44-1/2" (1130 mm) | 51-13/16" (1300 mm) | |
| Portal width | 53-15/16" (1370 mm) | 60-5/8" (1540 mm) | |
| Total height | 89-3/8" (2270 mm) | 89-3/8" (2270 mm) | |
| Total height with | | | |
| optional canopy D1 | 94-1/16" (2390 mm) | 94-1/16" (2390 mm) | |
| optional canopy D2 | 95-1/4" (2420 mm) | 95-1/4" (2420 mm) | |
| optional canopy D3 | 95-1/4" (2420 mm) | 95-1/4" (2420 mm) | |
| Passage height | 81-1/8" (2060 mm) | 81-1/8" (2060 mm) | |
| Passage width | 22-1/16" (560 mm) | 25-7/16" (646 mm) | |
| Portal and housing | Steel | Steel. | |
| Lockable maintenance opening | Aluminum | Aluminum. | |
| Rotating unit with tubular column, Ø3-1/2" (Ø89 mm) | 180° each with 11 straight crossbars Ø1-9/16" (Ø40 mm), made of glossy AISI 304 stainless steel with black plastic cover caps. | 120° each with 11 straight crossbars Ø1-9/16" (Ø40 mm), made of glossy AISI 304 stainless steel with black plastic cover caps. | |
| Barrier element | With 11 straight horizontal crossbars Ø1-5/8" (Ø42 mm), made of steel. | With 11 straight horizontal crossbars Ø1-5/8" (Ø42 mm), made of steel. | |
| Passage limitation | With steel columns. | With steel columns. | |
| Additional function | — | — | |
| Finish | Rotating unit made of glossy stainless steel, hot-dip galvanized steel elements, aluminum elements in RAL 9006 (white aluminum). | Rotating unit made of glossy stainless steel, hot-dip galvanized steel elements, aluminum elements in RAL 9006 (white aluminum). | |
| Function (see Notes below) | Power assist | Mechanical (Manual) Electronic (1) Electronic (2) Power assist | |
| Electrical equipment | Control system integrated in the unit. | Control system integrated in the unit. | |
| Power supply | 100 - 240 VAC, 50/60 Hz, 253 VA. | 100 - 240 VAC, 50/60 Hz, 253 VA. | |
| Standby power consumption | 20 VA. | 10 VA. | |
| Installation | In sleeve foundation, measure X = 5-15/16" (150 mm) | In sleeve foundation, measure X = 5-15/16" (150 mm) | |
| Protection classes | Housing IP33, components conducting supply voltage IP43. | Housing IP33, components conducting supply voltage IP43. | |

Notes

- **Manual**—Mechanical operation, free in one direction/opposite direction blocked.
- **Electronic (1)**—One direction electronically controlled/opposite direction blocked (behavior in event of power failure: both directions blocked or one direction free, one direction blocked).
- **Electronic (2)**—Electronically controlled in both directions (behavior in event of power failure: both directions blocked or both directions free).
- **Power assist**—Power-assisted motion; servo-positioning drive/ electronically controlled in both directions (behavior in event of power failure can be selected for each direction: free or blocked).

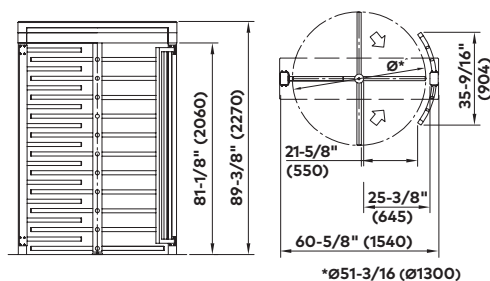
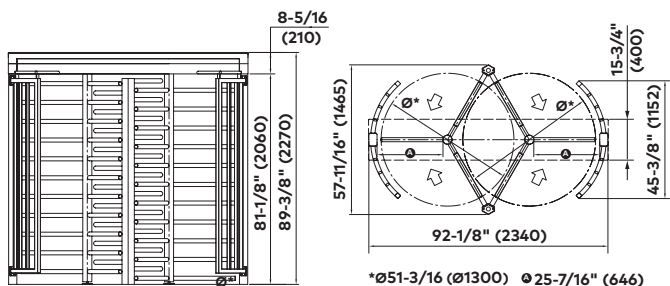


FTS-E06 / FTS-E03

Full Height Turnstiles



| Standard units | FTS-E06 | FTS-E03 |
|---|--|--|
| Construction column diameter | 51-13/16" (1300 mm) | 51-13/16" (1300 mm) |
| Portal width | 92-1/8" (2340 mm) | 60-5/8" (1540 mm) |
| Total height | 89-3/8" (2270 mm) | 89-3/8" (2270 mm) |
| Total height with | | |
| optional canopy D1 | 94-1/16" (2390 mm) | 94-1/16" (2390 mm) |
| optional canopy D2 | 95-1/4" (2420 mm) | 95-1/4" (2420 mm) |
| optional canopy D3 | 95-1/4" (2420 mm) | 95-1/4" (2420 mm) |
| Passage height | 81-1/8" (2060 mm) | 81-1/8" (2060 mm) |
| Passage width | 25-7/16" (646 mm) | 21-5/8" (550 mm) |
| Portal and housing | Steel. | Steel. |
| Lockable maintenance opening | Aluminum. | Aluminum. |
| Rotating unit with tubular column, Ø3-1/2" (Ø89 mm) | 120° each with 11 straight crossbars Ø1-9/16" (Ø40 mm), made of glossy. AISI 304 stainless steel with black plastic cover caps. | 90° each with 11 straight crossbars Ø1-9/16" (Ø40 mm), made of glossy. AISI 304 stainless steel with black plastic cover caps. |
| Barrier element | In middle part with 21 straight crossbars, Ø1-5/8" (Ø42 mm) made of steel. | With 11 straight horizontal crossbars Ø1-5/8" (Ø42 mm), made of steel. |
| Passage limitation | With steel columns. | With steel columns. |
| Additional function | Minimal space requirement due to interlocking rotating units. | — |
| Finish | Rotating unit made of glossy stainless steel, hot-dip galvanized steel elements, stainless steel maintenance opening in RAL 9006 (white aluminum). | Rotating unit made of glossy stainless steel, hot-dip galvanized steel elements, aluminum elements in RAL 9006 (white aluminum). |
| Function (see Notes on page 6) | Mechanical (Manual) Electronic (1) Electronic (2) Power assist | Mechanical (Manual) Electronic (1) Electronic (2) Power assist |
| Electrical equipment | Control system integrated in the unit. | Control system integrated in the unit. |
| Power supply | 100 - 240 VAC, 50/60 Hz, 253 VA. | 100 - 240 VAC, 50/60 Hz, 253 VA. |
| Standby power consumption | 10 VA. | 10 VA. |
| Installation | In sleeve foundation, measure X = 5-15/16" (150 mm). | In sleeve foundation, measure X = 5-15/16" (150 mm). |
| Protection classes | Housing IP33, components conducting supply voltage IP43. | Housing IP33, components conducting supply voltage IP43. |



Note
In illustrations, measurements are shown as inches followed by millimeters; for example, 1" (25).

FTS-E04 / FTS-E05

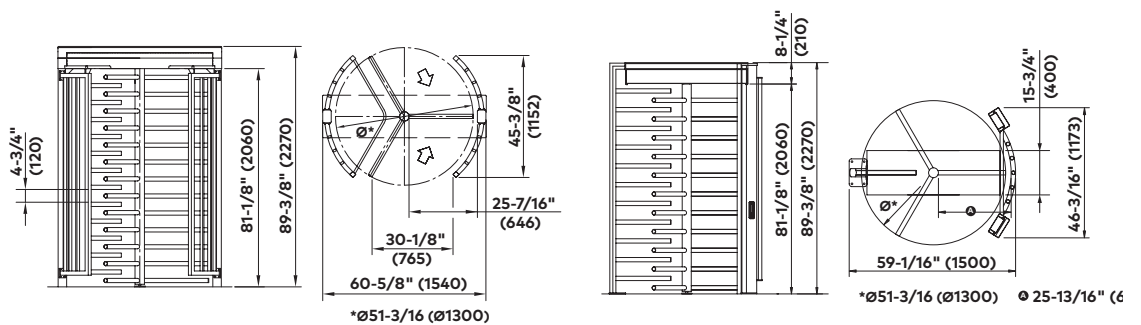
Full Height Turnstiles



| Standard units | FTS-E04 | FTS-E05 |
|---|--|---|
| Construction column diameter | 51-13/16" (1300 mm) | 51-13/16" (1300 mm) |
| Portal width | 60-5/8" (1540 mm) | 59-1/16" (1500 mm) |
| Total height | 89-3/8" (2270 mm) | 89-3/8" (2270 mm) |
| Total height with | | |
| optional canopy D1 | - | - |
| optional canopy D2 | - | - |
| optional canopy D3 | - | - |
| Passage height | 81-1/8" (2060 mm) | 81-1/8" (2060 mm) |
| Passage width | 25-7/16" (646 mm) | 25-7/16" (646 mm) |
| Portal and housing | Steel | Steel. |
| Lockable maintenance opening | AISI 304 stainless steel | Aluminum. |
| Rotating unit with tubular column, Ø3-1/2" (Ø89 mm) | 120° each with 13 straight crossbars Ø1-9/16" (Ø40 mm), made of glossy AISI 304 stainless steel with black plastic cover caps. | 120° each with 11 bar-shaped crossbars Ø1-9/16" (Ø40 mm) in hot-dip galvanized steel with black plastic cover caps. |
| Barrier element | Curved with 12 steel bars and protection against sawing through in the vertical tubes. | With 11 straight horizontal crossbars Ø1-5/8" (Ø42 mm), made of steel. |
| Passage limitation | With steel columns. | With steel columns. |
| Additional function | The unit complies with resistance class WK2. | - |
| Finish | Rotating unit made of glossy stainless steel, hot-dip galvanized steel elements, stainless steel maintenance opening in RAL 9006 (white aluminum). | Rotating unit made of steel, hot-dip galvanized steel elements. |
| Function (see Notes on page 6) | Power assist | Electronic (2) Power assist |
| Electrical equipment | Control system integrated in the unit. | Control system integrated in the unit. |
| Power supply | 100 - 240 VAC, 50/60 Hz, 253 VA. | 100 - 240 VAC, 50/60 Hz, 253 VA. |
| Standby power consumption | 20 VA. | 10 VA. |
| Installation | In sleeve foundation, measure X = 5-15/16" (150 mm). | On finished floor level FFL. |
| Protection classes | Housing IP33, components conducting supply voltage IP43. | Housing IP33, components conducting supply voltage IP43. |

Note

In illustrations, measurements are shown as inches followed by millimeters; for example, 1" (25).



FTS-M02 / FTS-M03

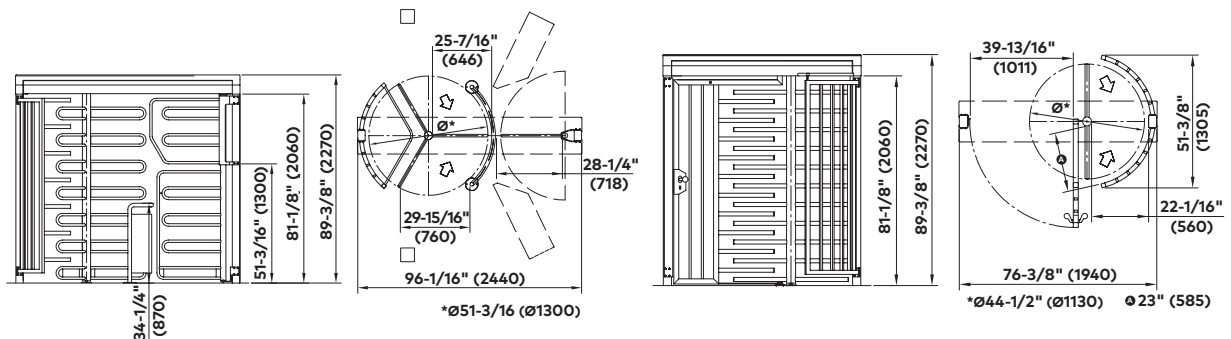
Full Height Turnstiles



| Standard units | FTS-M02 | FTS-M03 |
|---|---|--|
| Construction column diameter | 51-13/16" (1300 mm) | 44-1/2" (1130 mm) |
| Portal width | 92-1/8" (2340 mm) | 76-3/8" (1940 mm) |
| Total height | 89-3/8" (2270 mm) | 89-3/8" (2270 mm) |
| with optional canopy D1 | 94-1/16" (2390 mm) | 94-1/16" (2390 mm) |
| with optional canopy D2 | 95-1/4" (2420 mm) | 95-1/4" (2420 mm) |
| with optional canopy D3 | 95-1/4" (2420 mm) | 95-1/4" (2420 mm) |
| Passage height | 81-1/8" (2060 mm) | 81-1/8" (2060 mm) |
| Passage width | 25-7/16" (646 mm) | 22-1/16" (560 mm) |
| Portal and housing | Steel. | Steel. |
| Lockable maintenance opening | Aluminum. | Aluminum. |
| Rotating unit with tubular column, Ø3-1/2" (Ø89 mm) | 120° each with 7 U-shaped crossbars Ø1-1/16" (Ø27 mm), made of glossy AISI 304 stainless steel. | 180° each with 11 straight crossbars Ø1-9/16" (Ø40 mm), made of glossy AISI 304 stainless steel with black plastic cover caps. |
| Barrier element | Curved with 7 horizontal steel bars. | Integrated swing door with 10 straight horizontal steel crossbars Ø1-5/8" (Ø42 mm), and continuous frame with steel columns. Equipped with knob on both sides and latch bolt lock (prepared for on-site profile cylinder). |
| Passage limitation | Half-height made of curved tubular AISI 304 stainless steel with plate panel. | With steel columns. |
| Additional function | Automatic bike door with three U-shaped crossbars Ø1-1/16" (Ø27 mm) and guard plate at bottom. Tube frame, guard plate and crossbars made of AISI 304 glossy stainless steel. Fixed barrier element above the bike door with two U-shaped crossbars Ø1-1/16" (Ø27 mm) and tube frame made of steel. | Integrated door that can be opened when required. |
| Finish | Rotating unit made of glossy stainless steel, hot-dip galvanized steel elements, aluminum elements in RAL 9006 (white aluminum). | Rotating unit made of glossy stainless steel, hot-dip galvanized steel elements, aluminum elements in RAL 9006 (white Aluminum). |
| Function (see Notes on page 6) | Power assist. Automatic bicycle door with two induction loops and loop detector, electronically controlled in two directions. | Mechanical (Manual) Power assist The rotating unit turns automatically 90° in passage direction when the door is opened. |
| Electrical equipment | Control system integrated in the unit. | Control system integrated in the unit. |
| Power supply | 100 - 240 VAC, 50/60 Hz, 506 VA. | 100 - 240 VAC, 50/60 Hz, 253 VA. |
| Standby power consumption | 10 VA. | 10 VA. |
| Installation | In sleeve foundation, measure X = 5-15/16" (150 mm). | In sleeve foundation, measure X = 5-15/16" (150 mm). |
| Protection classes | Housing IP33, components conducting supply voltage IP43. | Housing IP33, components conducting supply voltage IP43. |

Note

In illustrations, measurements are shown as inches followed by millimeters; for example, 1" (25).



FTS-M05

Full Height Turnstiles

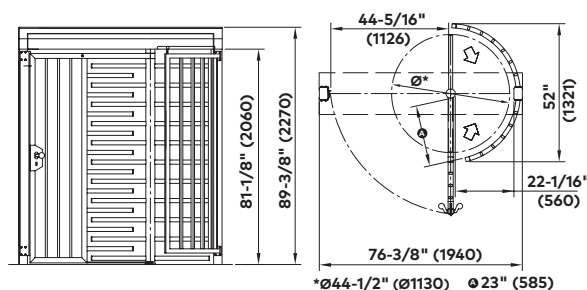


| Standard units | FTS-M04 |
|---|---|
| Construction column diameter | 44-1/2" (1130) |
| Portal width | 76-3/8" (1940) |
| Total height | 89-3/8" (2270) |
| Total height with | |
| optional canopy D1 | 94-1/16" (2390) |
| optional canopy D2 | 95-1/4" (2420) |
| optional canopy D3 | 95-1/4" (2420) |
| Passage height | 81-18" (2060) |
| Passage width | 22-1/16" (560) |
| Portal and housing | Steel. |
| Lockable maintenance opening | Aluminum. |
| Rotating unit with tubular column, Ø3-1/2" (Ø89 mm) | 180° each with 11 straight crossbars Ø1-9/16" (Ø40 mm), made of glossy AISI 304 stainless steel with black plastic cover caps. |
| Barrier element | Integrated swing door with 10 straight horizontal steel crossbars Ø1-5/8" (Ø42 mm), and continuous frame with steel columns. Equipped with knob on both sides and emergency release mortise lock (prepared for on-site profile cylinder), electric emergency door opener, currentless open. |
| Passage limitation | With steel columns. |
| Additional function | The unit has an emergency egress function. |
| Finish | Rotating unit made of glossy stainless steel, hot-dip galvanized steel elements, aluminum elements in RAL 9006 (white aluminum). |
| Function | Power assist.* Emergency egress function: "individual authorization" must be granted by the highest authority on building supervision. The rotating unit turns automatically 90° in passage direction when the door is opened. |
| Electrical equipment | Control system integrated in the unit. |
| Power supply | 100 - 240 VAC, 50/60 Hz, 335 VA. |
| Standby power consumption | 20 VA. |
| Installation | In sleeve foundation, measure X = 5-15/16" (150 mm). |
| Protection classes | Housing IP33, components conducting supply voltage IP43. Door terminal IP44. |

***Power assist**—Power-assisted motion; servo-positioning drive/electronically controlled in both directions (behavior in event of power failure can be selected for each direction: free or blocked).

Note

In illustrations, measurements are shown as inches followed by millimeters; for example, 1" (25).



FTS Series optional canopies

Canopies prevent people from climbing over and provide weather protection.

| Canopy | FTS-E01 | FTS-E02 | FTS-E03 | FTS-E04 | FTS-E05 | FTS-E06 | FTS-M02 | FTS-M03 | FTS-M05 |
|---|---------|---------|---------|---------|---------|---------|---------|---------|---------|
| Canopy D1 Depth 59-1/16" or 109-1/6" (1500 mm or 2770 mm) Total height 4-3/4" (120 mm) | | | | | | | | | |
| Width | | | | | | | | | |
| 64-15/16" (1650 mm) | ○ | - | - | - | - | - | - | - | - |
| 71-5/8" (1820 mm) | - | ○ | ○ | - | - | - | - | - | - |
| 87-3/8" (2220 mm) | - | - | - | - | - | - | - | ○ | ○ |
| 103-3/16" (2620 mm) | - | - | - | - | - | ○ | - | - | - |
| 107-1/16" (2720 mm) | - | - | - | - | - | - | ○ | - | - |
| Canopy D2 / Canopy D3 Depth 111" or 147-1/4" (2820 mm or 3740 mm) with 7-7/8" (200 mm) canopy edge or Depth 183-1/16" (4650 mm) with 15-3/4" (400 mm) canopy edge | | | | | | | | | |
| Width | | | | | | | | | |
| 72-1/16" (1830 mm) | ○ | - | - | - | - | - | - | - | - |
| 78-3/4" (2000 mm) | - | ○ | ○ | - | - | - | - | - | - |
| 94-1/2" (2400 mm) | - | - | - | - | - | - | - | ○ | ○ |
| 110-1/4" (2800 mm) | - | - | - | - | - | ○ | - | - | - |
| 114-3/16" (2900 mm) | - | - | - | - | - | - | ○ | - | - |

○ optional – not available

Canopy D1

- Hot-dip galvanized steel substructure, trapezoidal sheet cover in RAL 9002 grey-white (optional plastic coating in an RAL color).
- For multiple units we supply one continuous canopy. For four units or more, a central water outlet is required.
- The distance between units is 2" (50 mm).

Canopy D2

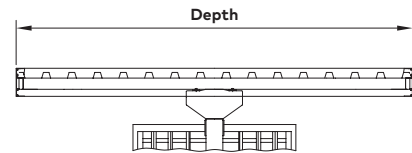
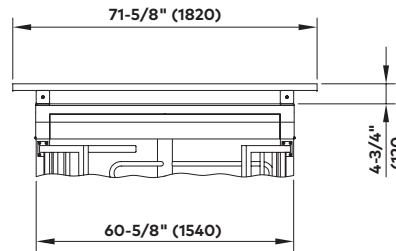
- Hot-dip galvanized steel substructure, trapezoidal sheet cover in RAL 9002 grey-white (optional plastic coating in an RAL color).
- With silver anodized canopy edge and water outlet in grey PVC.
- From depth 147-1/4" (3740 mm) and above, the unit has to be installed in the sleeve foundation and equipped with reinforced posts.
- For multiple units, we supply one continuous canopy. The distance between units is 2" (50 mm).
- The canopy edge is continuous with a length of max. 20' 11/32" (6.4 m).

Canopy D3

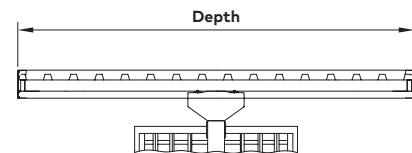
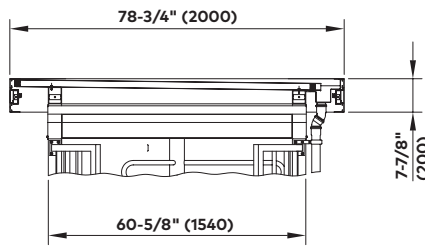
- Hot-dip galvanized steel substructure, trapezoidal sheet cover in RAL 9002 grey-white (optional plastic coating in an RAL color).
- With silver anodized canopy edge and water outlet in grey PVC.
- Canopy underside with aluminum cladding in lotus white.
- From depth 147-1/4" (3740 mm) and above, the unit has to be installed in the sleeve foundation and equipped with reinforced posts.
- For multiple units we supply one continuous canopy. The distance between units is 2" (50 mm).
- The canopy edge is continuous with a length of max. 20' 11/32" (6.4 m).

FTS Series optional canopies

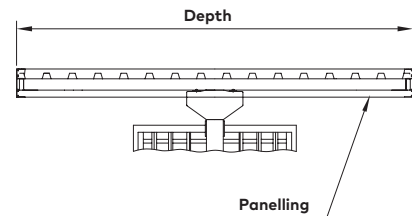
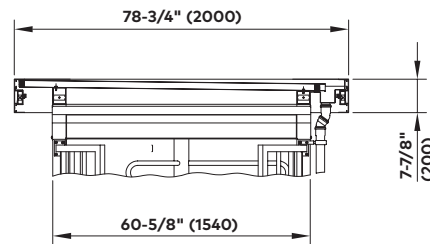
Canopy D1 with trapezoidal sheet cover.



Canopy D2 with trapezoidal sheet cover, canopy edge profile, and water outlet.



Canopy D3 with trapezoidal sheet cover, canopy edge profile, panelling, and water outlet.



Note

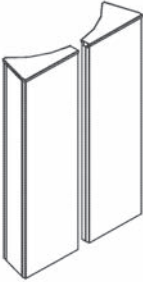
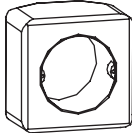
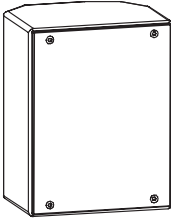
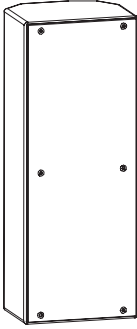
In illustrations, measurements are shown as inches followed by millimeters; for example, 1" (25).

FTS Series options

| | FTS-E01 | FTS-E02 | FTS-E03 | FTS-E04 | FTS-E05 | FTS-E06 | FTS-M02 | FTS-M03 | FTS-M05 |
|---|---------|---------|---------|---------|---------|---------|---------|---------|---------|
| Construction | | | | | | | | | |
| Housing with lockable front panel made of silver anodized light metal, light metal plastic-coated according to RAL or glossy stainless steel. | - | o | - | - | - | o | - | - | - |
| Canopies D1, D2 and D3. Versions depending on unit type: hot-dip galvanized steel substructure and aluminum canopy edge 200 or 400 and trapezoidal sheet, available plastic-coated in RAL color. The water outlet can be in stainless steel or plastic-coated in a RAL color instead of grey. | o | o | o | - | - | o | o | o | o |
| Curved barrier element, hot-dip galvanized or plastic-coated according to RAL, instead of straight crossbars. | - | o | o | - | - | - | - | - | - |
| Rotating unit with curved crossbars including curved barrier element. | - | o | - | - | - | - | - | - | - |
| Rotating unit made of AISI 316 or AISI 304 stainless steel. | o | o | o | - | - | o | o | o | o |
| For each direction: mechanical pivoted lever unlocking with profile half cylinder, installed in maintenance opening. | o | o | o | - | - | o | o | o | o |
| Finish | | | | | | | | | |
| Steel and aluminum parts: additional plastic coating according to RAL. | o | o | o | o | o | o | o | o | o |
| Function | | | | | | | | | |
| Door opener currentless open/currentless closed. | - | - | - | - | - | - | - | o | - |
| Door check with slide bar installed in portal housing or drive for each integrated door. | - | - | - | - | - | - | - | o | o |
| Two concrete blocks with embedded induction loops instead of loops supplied loose. | - | - | - | - | - | - | o | - | - |
| Counter. | - | - | - | - | - | - | - | o | o |
| Random generator with or without horn. | o | o | o | o | o | o | o | o | o |
| Electrical equipment | | | | | | | | | |
| Plug-in power supply unit to supply external nodes, 24 VDC/1A. | - | - | - | - | - | - | - | o | o |
| Installation preparation on flat surface as rectangular cut-out for components provided by the customer. | o | o | o | - | - | o | - | o | o |
| Different consoles made completely of stainless steel or plastic or aluminum in color of unit or in RAL 9006. Front panels of aluminum consoles available in plastic or stainless steel. | o | o | o | o | - | o | - | o | o |
| Button for manual single release. | o | o | o | o | o | o | - | - | - |
| Electric key-operated push button for single or continuous release. | - | - | - | - | - | - | - | o | o |
| Operating panels and frames or surface mount housing. | o | o | o | o | o | o | o | o | o |
| Additional circuit boards for expanding existing inputs and outputs on power assist units. | o | o | o | o | o | o | o | o | o |
| Various signal devices. | o | o | o | - | o | o | o | o | o |
| Star hub to connect a maximum of four OPL 05s. | - | - | - | - | - | - | - | o | o |
| Various LED lighting and twilight switch options | o | o | o | - | - | o | o | o | o |
| Installation | | | | | | | | | |
| Turnstile unit can be assembled at the factory for "finished floor level" and "sub floor level" mounting. | o | o | o | - | o | - | - | - | - |
| Mounting on finished floor level X = 0. | o | o | o | - | o | o | o | o | o |
| Mounting on sub floor level X = 5-15/16" (150 mm). | o | o | o | - | o | o | o | o | o |

o optional - not available

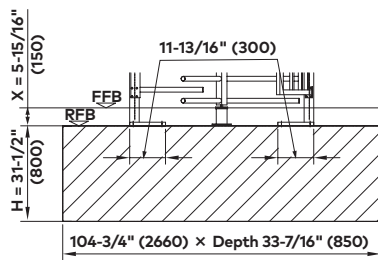
FTS Series optional components

| Housing | Console 1 | Console 2 | Console 3 |
|---|---|--|--|
|  |  |  |  |
| Housing with lockable front panel made of silver anodized aluminum, plastic-coated according to RAL or glossy stainless steel | Plastic in color of unit or in RAL 9006 Width 3-11/16" (94 mm) Height 3-11/16" (94 mm) Depth 2-9/16" (65 mm) | Aluminum in color of unit or in RAL 9006 Width 5-1/2" (140 mm) Height 7-1/16" (180 mm) Depth 4-5/16" (110 mm) | Aluminum in color of unit or in RAL 9006 Width 5-1/2" (140 mm) Height 14-3/8" (365 mm) Depth 4-5/16" (110 mm) |

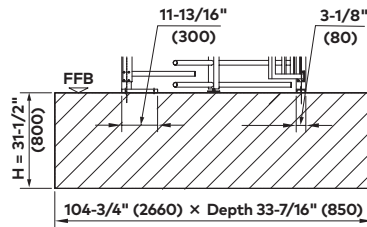
Installation examples

Based on FTS-E02 turnstile

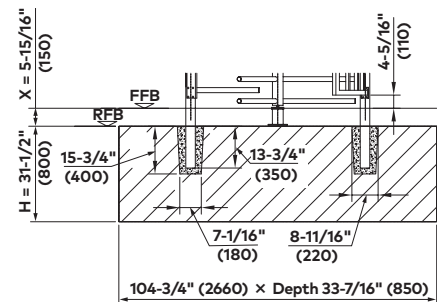
Sub floor level



Finished floor level



Sleeve foundation



Note

In illustrations, measurements are shown as inches followed by millimeters; for example, 1" (25).

FGE-M01

Full Height Gate

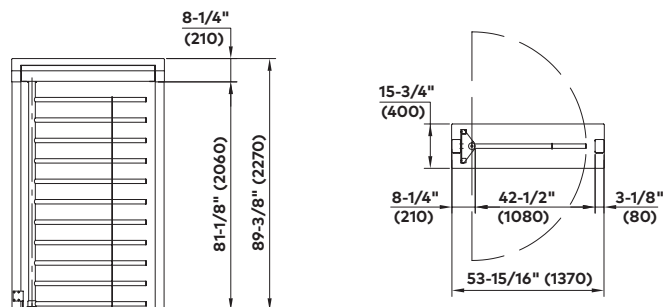


| Standard unit | FGE-M01 |
|--|---|
| Application | Passage of persons and material handling |
| Construction | |
| Portal width | 53-15/16" (1370) |
| Total height | 89-3/8" (2270) |
| Total height with | |
| optional canopy D1 | 94-1/16" (2390) |
| optional canopy D2 | 95-1/4" (2420) |
| optional canopy D3 | 95-1/4" (2420) |
| Passage height | 81-1/8" (2060) |
| Passage width | 41-1/2" (1080) |
| Portal and housing | Steel. |
| Lockable maintenance opening | Aluminum. |
| Hinge door with tubular column \varnothing 3-1/2" (\varnothing 89 mm) | With 11 straight crossbars \varnothing 1-9/16" (\varnothing 40 mm) and vertical reinforcement plate made of glossy AISI 304 stainless steel. |
| Finish | Hinge door made of glossy stainless steel. Hot-dip galvanized steel elements. Aluminum elements in RAL 9006 (white aluminum). |
| Function | Power assist* |
| Electrical equipment | Control system integrated in the unit. |
| Power supply | 100 - 240 VAC, 50/60 Hz, 253 VA. |
| Installation | In sleeve foundation, measure X = 5-15/16" (150 mm). |
| Protection classes | Housing IP33, components conducting supply voltage IP43. |

***Power assist**—Power-assisted motion; servo-positioning drive/ electronically controlled in both directions (behavior in event of power failure can be selected for each direction: free or blocked).

Note

Full-height gates in a matching design offer a fitting solution for ADA compliance.



FGE-M01 optional canopies

Canopies prevent people from climbing over and provide weather protection.

Canopy D1

Hot-dip galvanized steel substructure, trapezoidal sheet cover in RAL 9002 grey-white (optional plastic coating in a RAL color). For multiple units we supply one continuous canopy. For four units or more, a central water outlet is required. The distance between units is 2" (50 mm).

Canopy D2

Hot-dip galvanized steel substructure, trapezoidal sheet cover in RAL 9002 grey-white (optional plastic coating in a RAL color). With silver anodized canopy edge and water outlet in grey PVC. For multiple units, we supply one continuous canopy. The distance between units is 2" (50 mm). The canopy edge is continuous with a length of max. 20' 11/32" (6.4 m).

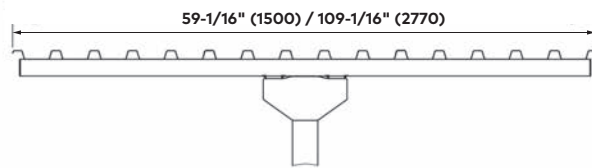
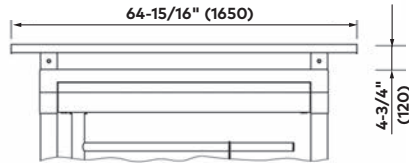
Canopy D3

Hot-dip galvanized steel substructure, trapezoidal sheet cover in RAL 9002 grey-white (optional plastic coating in a RAL color). With silver anodized canopy edge and water outlet in grey PVC. Canopy underside with aluminum cladding in lotus white. For multiple units we supply one continuous canopy. The distance between units is 50 mm. The canopy edge is continuous with a length of max. 20' 11/32" (6.4 m).

Canopy D1 with trapezoidal sheet cover.

Depth: 59-1/16" (1500) or 89-3/8" (2700)

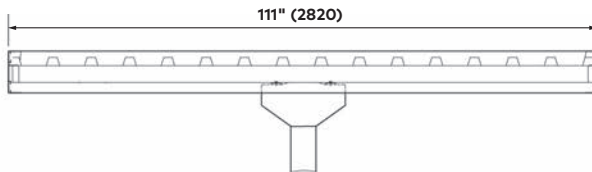
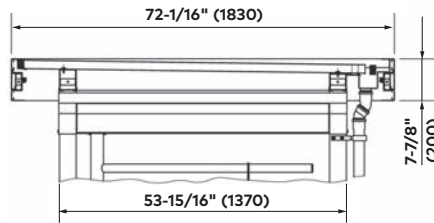
Total height: 64-15/16" (1650)



Canopy D2 with trapezoidal sheet cover, canopy edge profile and water outlet.

Depth: 111" (2820) (canopy edge 7-7/8" [200])

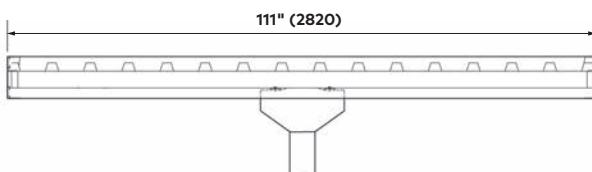
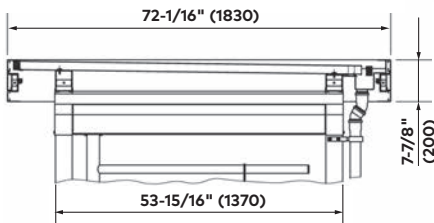
Total height: 72-1/16" (1830)



Canopy D3 with trapezoidal sheet cover, canopy edge profile, panelling and water outlet.

Depth: 111" (2820) (canopy edge 7-7/8" [200])

Total height: 72-1/16" (1830)



Note

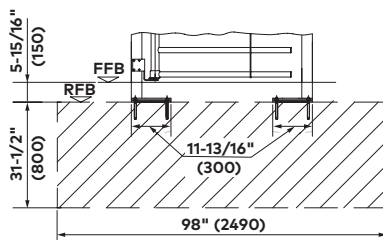
In illustrations, measurements are shown as inches followed by millimeters; for example, 1" (25).

FGE-M01 options

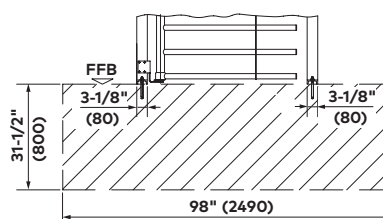
| Option | FGE-M01 |
|----------------------|---|
| Construction | For each direction: mechanical pivoted lever unlocking with profile half cylinder, installed in maintenance opening. |
| Finish | Steel and aluminum parts: additional plastic coating according to RAL. |
| Electrical equipment | <p>Installation preparation on flat surface as rectangular cut-out for components provided by the customer.</p> <p>Different consoles made completely of stainless steel or plastic or aluminum in color of unit or in RAL 9006.</p> <p>Operating panels and frames or surface mount housing.</p> <p>Additional circuit boards for expanding existing inputs and outputs.</p> <p>Various signal devices.</p> <p>Heating.</p> <p>Various lighting and twilight switch options.</p> |
| Installation | <p>Mounting on finished floor level X = 0.</p> <p>Mounting on sub floor level X = 5-15/16" (150 mm).</p> |

FGE-M01 installation examples

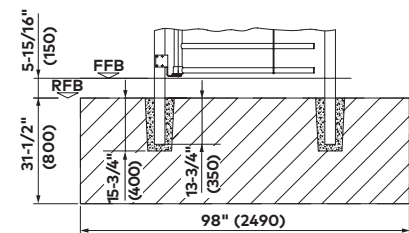
Sub floor level



Finished floor level



Sleeve foundation



Note

In illustrations, measurements are shown as inches followed by millimeters; for example, 1" (25).

Architectural and design consultation

Project support at every phase.



We provide the most comprehensive project support services in the industry. From specification and new installation to dependable maintenance, our goal is your satisfaction.

For comprehensive project support, call dormakaba at **844-SPECNOW (844-773-2669)**

We provide unparalleled support at every phase of your project—from design consultation and specifications to installation and maintenance.

Our in-house consultants are here to assist you from the start of your project with design and writing non-proprietary specifications and schedules. Next, you can rely on our customer service team to provide exceptional product support, while our nationwide network of service professionals can help with the final phases of installation and proper maintenance.

Our comprehensive specification writing services include consultation on our complete range of entrance solutions:

- Automatic door systems (sliding, swinging, and revolving doors)
- Glass systems and hardware
- Architectural hardware
- Operable walls

Consulting services include:

- Developing code-compliant access solution specifications and schedules
- Developing detailed specifications for all other product groups
- Meeting with the design professional and/or owner to discuss project requirements and security coordination
- Assisting with development of a professional key system
- Preparing budgets
- Reviewing substitution requests
- Reviewing submittals
- Responding to RFIs, owner's comments, and comments from other entities
- Assisting with punch list development and administration

Service and installation

A commitment to excellence.

Our nationwide network of service professionals is certified by the American Association of Automatic Door Manufacturers.

With an emphasis on service excellence, dormakaba is committed to delivering, installing and servicing automatic, revolving, and manual doors and hardware for commercial applications.

dormakaba's nationwide network of service professionals provides responsive and comprehensive sales, technical, project management, and maintenance support. Dedicated to the highest level of expertise, all our service technicians are certified by the American Association of Automatic Door Manufacturers (AAADM).

With more than 28 offices throughout North America, our certified professionals are ready to respond to your service needs.

Visit go.dormakaba.com/ServiceAMER to learn more about dormakaba Service and Installation.





www.dormakaba.com

DORMA USA, Inc.
Dorma Drive,
Drawer AC
Reamstown, PA 17567
844-SPECNOW

KAA1365 0217 1.5M CT