



# **WA-54U Pro**

Wireless USB Dongle

**ENGLISH**

User Manual

Model: WA-54U Pro

FCC ID: W8ONW06-WA54UP

THIS DEVICE COMPLIES WITH PART 15 OF THE FCC RULES.

OPERATION IS SUBJECT TO THE FOLLOWING TWO CONDITIONS:

- (1) THIS DEVICE MAY NOT CAUSE HARMFUL INTERFERENCE AND
- (2) THIS DEVICE MUST ACCEPT ANY INTERFERENCE RECEIVED,  
INCLUDING INTERFERENCE THAT MAY CAUSE UNDESIRE  
OPERATION.

Made in China

Brand Name: KAIOMY

### **Federal Communication Commission Interference Statement**

This equipment has been tested and found to comply with the limits for a Class B digital device, pursuant to Part 15 of the FCC Rules. These limits are designed to provide reasonable protection against harmful interference in a residential installation.

This equipment generates, uses and can radiate radio frequency energy and, if not installed and used in accordance with the instructions, may cause harmful interference to radio communications. However, there is no guarantee that interference will not occur in a particular installation. If this equipment does cause harmful interference to radio or television reception, which can be determined by turning the equipment off and on, the user is encouraged to try to correct the interference by one of the following measures:

- . Reorient or relocate the receiving antenna.
- . Increase the separation between the equipment and receiver.
- . Connect the equipment into an outlet on a circuit different from that to which the receiver is connected.
- . Consult the dealer or an experienced radio/TV technician for help.

***FCC Caution:*** To assure continued compliance, any changes or modifications not expressly approved by the party responsible for compliance could void the user's authority to operate this equipment. (Example - use only shielded interface cables when connecting to computer or peripheral devices).

### ***FCC Radiation Exposure Statement***

This equipment complies with FCC RF radiation exposure limits set forth for an uncontrolled environment. This equipment should be installed and operated with a minimum distance of 20 centimeters between the radiator and your body.

This transmitter must not be co-located or operating in conjunction with any other antenna or transmitter.

The antennas used for this transmitter must be installed to provide a separation distance of at least 20 cm from all persons and must not be co-located or operating in conjunction with any other antenna or transmitter.

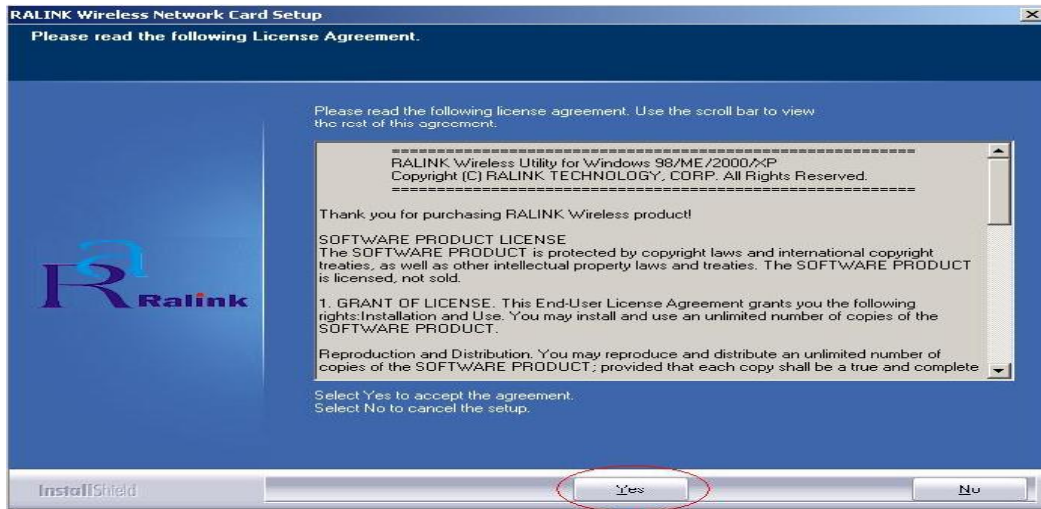
# Ralink USB Wireless LAN Adapter User's Manual

## 1 Install the driver

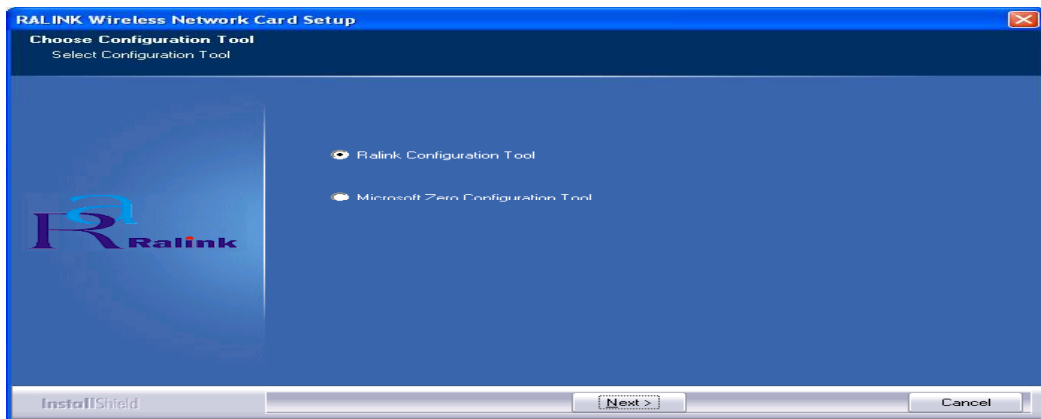
a Insert the installation CD into your CD-ROM driver, Double click the icon



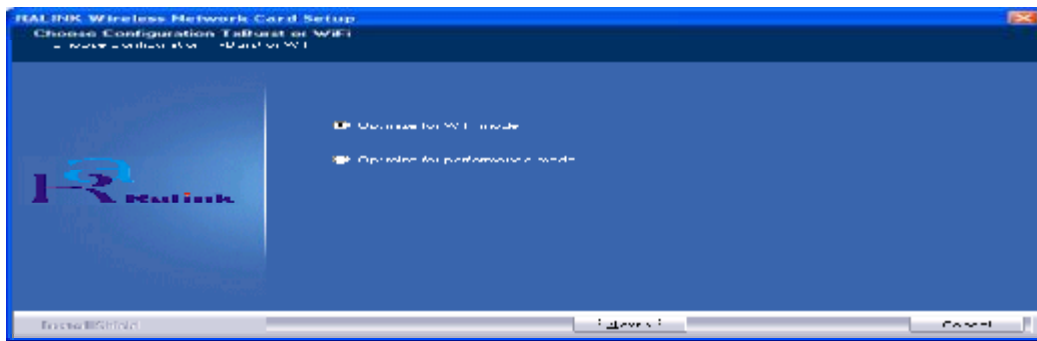
b



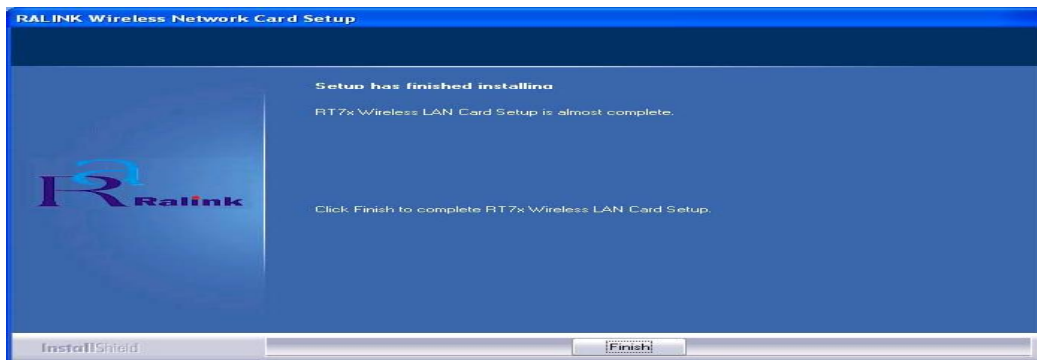
c Choose *Ralink Configuration Tool* and click *next* to go on



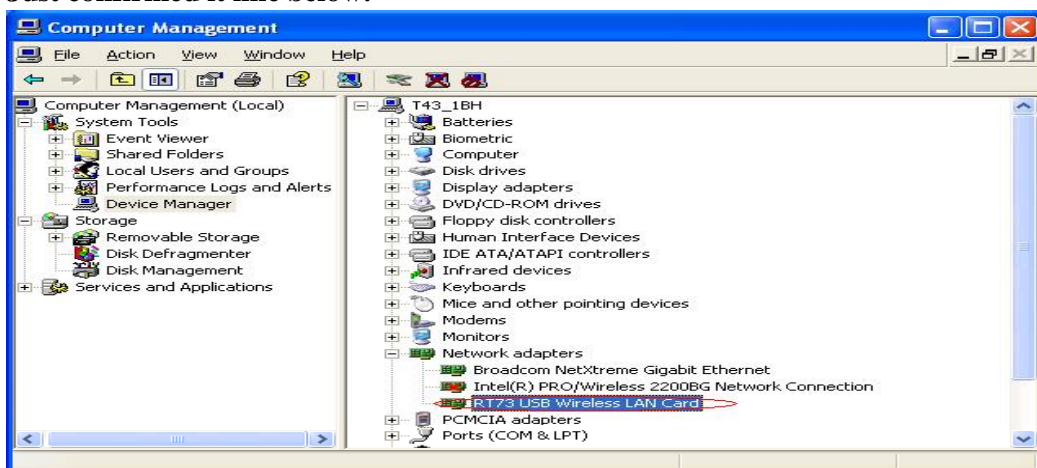
d Choose *Optimize for WiFi mode* and click *next* to go on



f Click *Finish* to end the setup



2 Plug in your usb wireless LAN adapter, it will be recognized and auto installed.  
Just confirmed it like below:

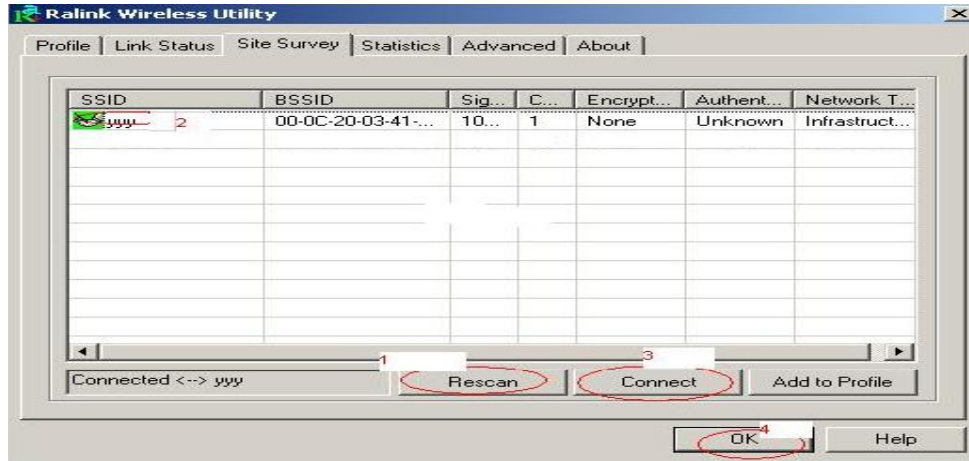


3 Make infrastructure connection

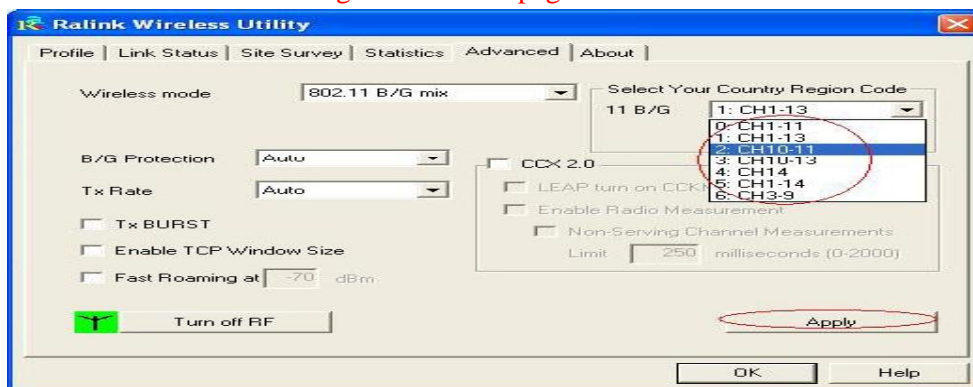
- Double click the icon in red circle



➤ You will see:

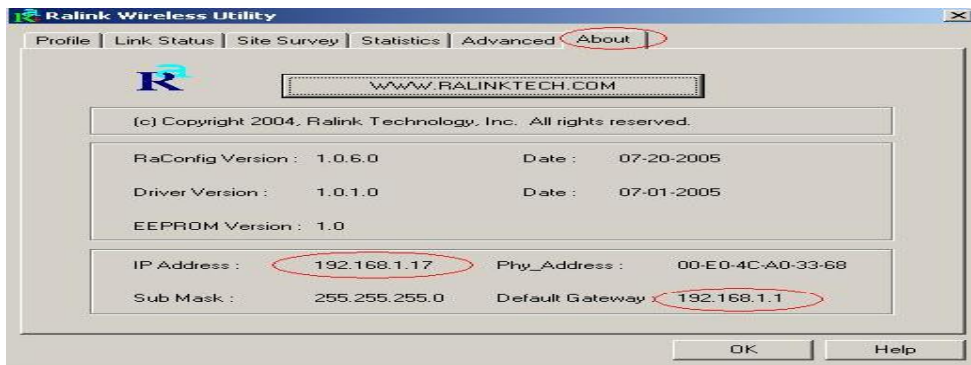


- You can click the button **Rescan** to find which AP is in range, they will show on the window, choice one you want to connect, and click the button **connect**, and click **ok** to finish the connection operation.
- An infrastructure connection is accomplished.
- Note, please choose correct channel setting up to your law, for example, ch13 is permitted in your country, and you set your router at ch13, while you choose ch1-ch11 (default setting), you will never find the AP, and you will have to choose ch1-ch13 setting in **Advanced** page as below

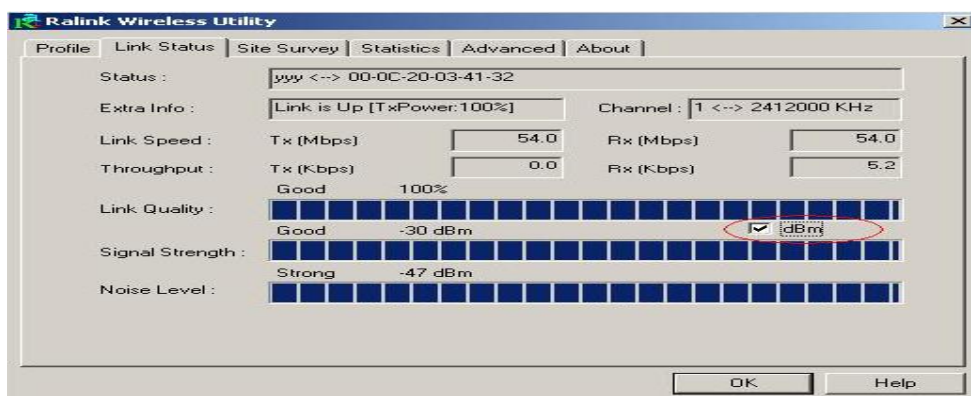
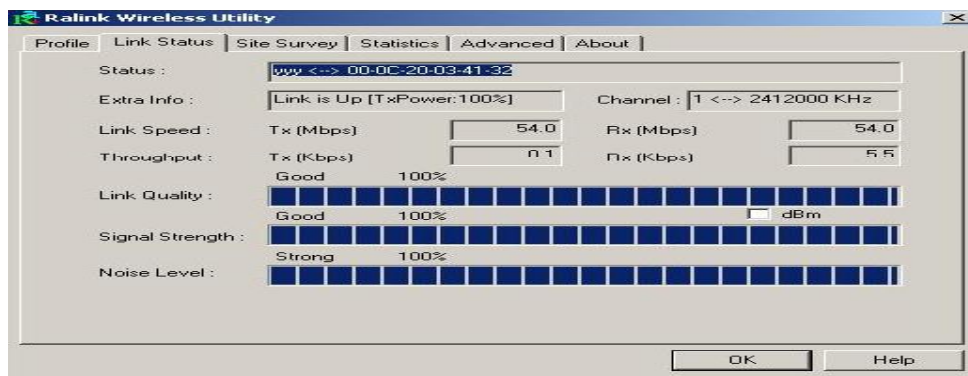


#### 4 Some help information in *Rlink Wireless Utility*

- How to find out your IP address:

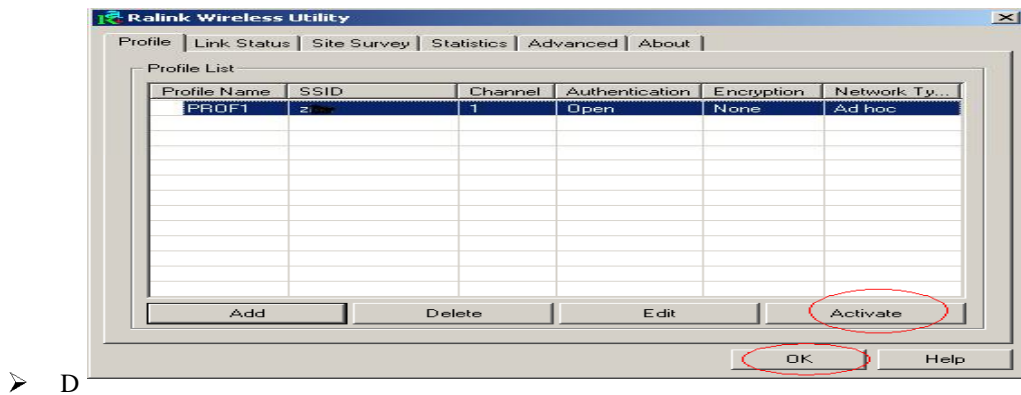
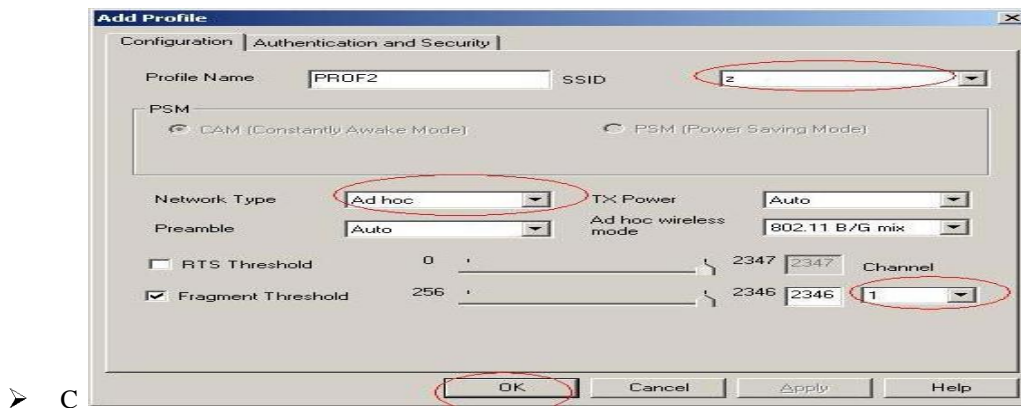
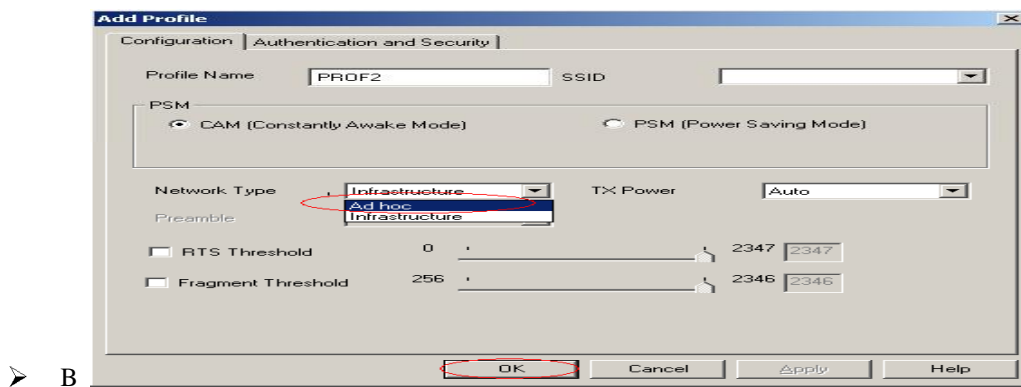
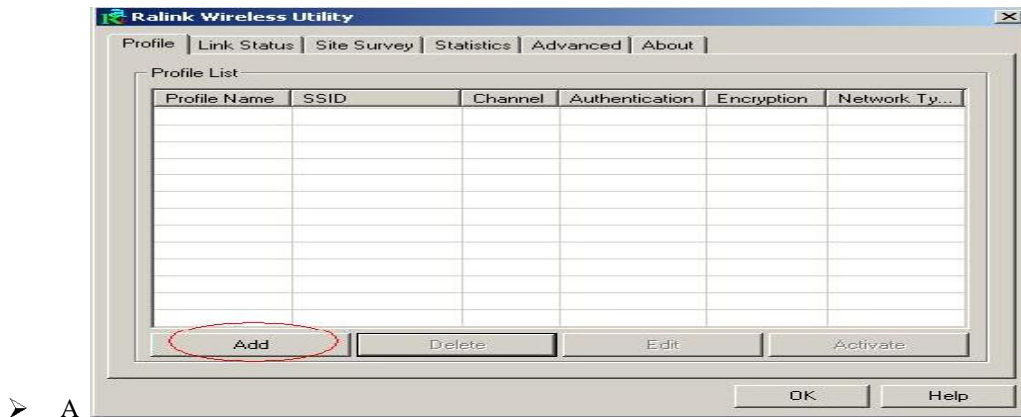


- How to find out which a WIFI environment you are inside



## 5 Make Ad-Hoc mode connection

- 5.1 Make an Ad-Hoc SSID

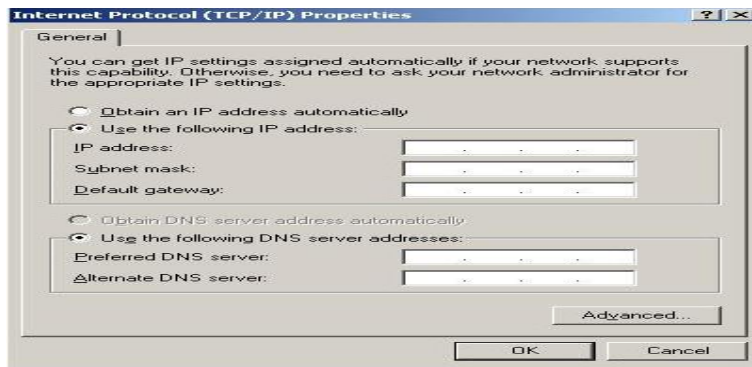


● 5.2 Setup static IP address for the Ad-Hoc link

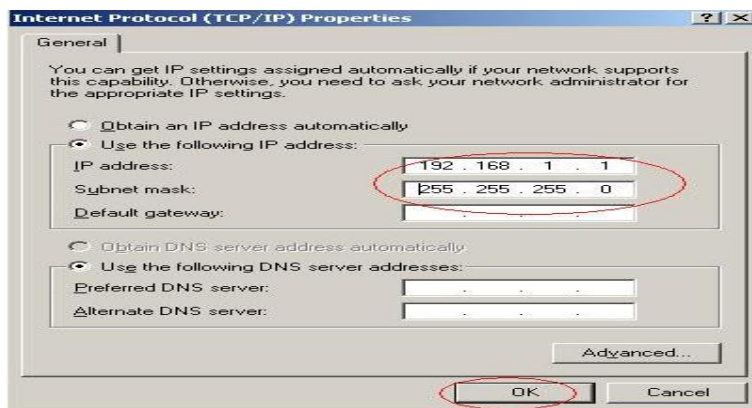
- A At its property page, double click item *Internet Protocol (TCP/IP)*



- B You will get

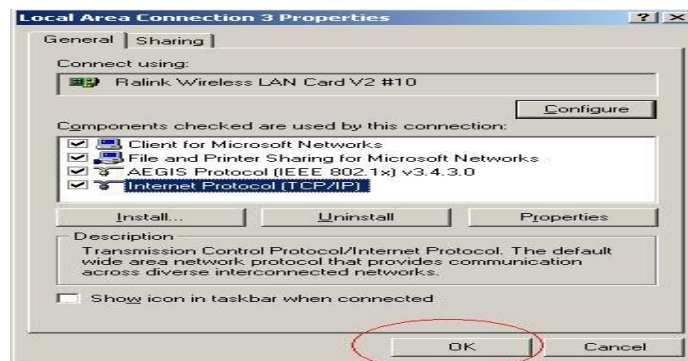


- C Fill the IP address blank, example as below:



- D Click *ok* to finish the setup





- 5.3 Ad-Hoc setup for one point accomplished
- 5.4 Setup another Ad-Hoc point as step A,B,C,D.
- 5.5 Ad-Hoc mode link accomplished. And you can visit each other.

Note: To make an Ad-Hoc mode link, Do remember to choice the same channel, its static IP address should be in the same netsub, and the SSID should be the same too.