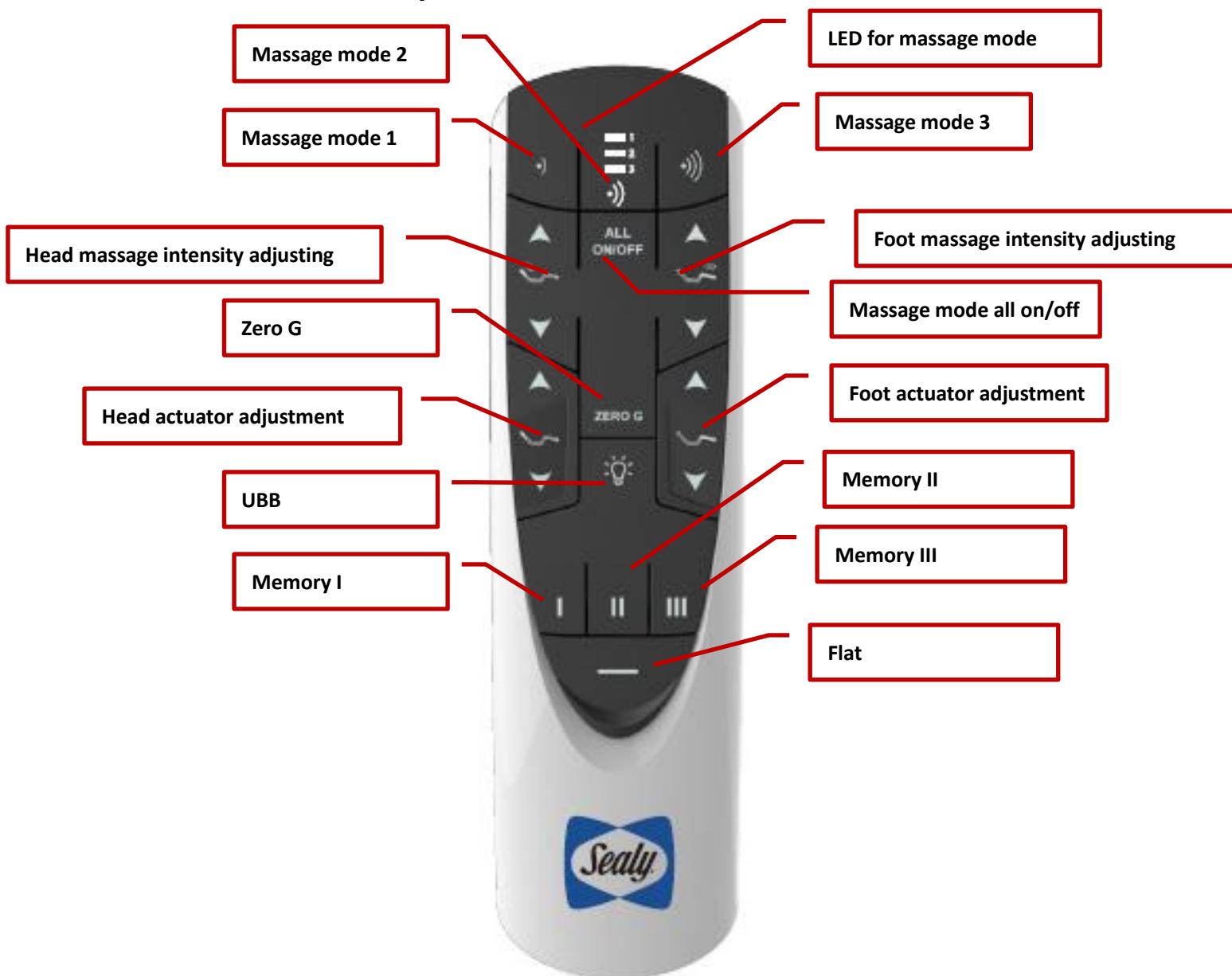


	Issuing Department: Bedding Division	Date:	2016-11-28
	Function Test Instructions	Author:	Jarek
		Model: RF358B	
Function Test Instructions of JLDK.33.03.14		Edition:	1.0
		Page 1 of 7	

Function Instructions of JLDK.33.03.14

1. Product description



	Issuing Department: Bedding Division	Date:	2016-11-28
	Function Test Instructions	Author:	Jarek
		Model: RF358B	
Function Test Instructions of JLDK.33.03.14		Edition:	1.0
		Page 2 of 7	

2. Function description

1.1. LED flashes when power on

Power supply by control box, PAIRINGLED of control box turns off after flashes for 4 times , and POWER LED turns on.

1.2. Paring code

Process of paring code:

Double click RESET button on control box, pairing LED turns on, The control box enters the mode of code paring;

Press and hold the code paring button under battery cover, the backlight of paring LED flashes, and the backlight of remote flashes, the remote enters into mode of code paring;

The backlight of paring LED stops flashing and the paring LED of control box turns off, it indicates that the code paring is successful;

If fails, repeat all the steps above;

1.3. Head actuator moves out

Press and hold the head up button, head actuator moves out, stop when released;

1.4. Head actuator moves in

Press and hold the head down button, head actuator moves in, stop when released;

1.5. Foot actuator moves out

Press and hold foot up button, foot actuator moves out, stop when released;

1.6. Foot actuator moves in

Press and hold foot down button, head actuator moves in, stop when released;

	Issuing Department: Bedding Division	Date:	2016-11-28
	Function Test Instructions	Author:	Jarek
		Model: RF358B	
Function Test Instructions of JLDK.33.03.14		Edition:	1.0
		Page 3 of 7	

1.7. Underbed lighting

Click underbed lighting button, turn on (or turn off) the undered lighting, it switches its status once when click the button every time;


1.8. FLAT function

Click FLAT button, head and foot actuators move to the lowest position(when the actuators are free, you can stop the massage motor, turn off the massage motor LED), running can be stopped by clicking any button;


1.9. ZERO G position

Click ZERO G button, head and foot actuators move to the memory position which is preset, running can be stopped by clicking any button;


1.10. ANTISNORE position

Click  ANTISNORE button, head and foot actuator actuators move to the memory position which is preset, running can be stopped by clicking any button;

1.11. LOUNGE position

Click  LOUNGE button, head and foot actuators move to the memory position which is preset, running can be stopped by clicking any button;

1.12. TV position

Click  TV button, head and foot actuators move the memory position which is preset, running can be stopped by clicking any button;

	Issuing Department: Bedding Division	Date:	2016-11-28
	Function Test Instructions	Author:	Jarek
		Model: RF358B	
Function Test Instructions of JLDK.33.03.14	Edition:	1.0	
Page 4 of 7			

1.13. Customized position button (ANTISNORE , LOUNGE, TV)

The custom setting processes are as follows:

1. Click FLAT button, flat the actuator;
2. Operate the head up or head down or foot up or foot down button, adjust the head actuator and foot actuator to an expected position;
3. Press and hold the button that needs customize position, hold for 5s, the LED on the top of the remote cycle flashes;
4. Release the button, LED stops flashing, it indicates that the customization is finished.

The default position setting can be restored to the default setting. Press and hold the ZERO G + FLAT button for about 5 seconds. The LED on the top of the remote cycle flashes, when the LED stops flashing, it indicates that the setting to the default position is finished.

1.14. Description of massage mode 1



Every time when click "MODE 1" button, the LED1 of remote turns on, the intensity of head and foot massage motors enhances by one level, there are three massage intensities totally. When in the third intensity, click "MODE 1" button again, the intensity level switches to 0, the mode cycles;

1.15. Description of massage mode 2



Every time when click "MODE 2" button, LED2 of the remote turns on,, the intensity of head and foot massage motors enhances by one level, there are three massage intensities totally. When in the third intensity, click "MODE 2" button again, the intensity level switches to 0, the mode cycles;

	Issuing Department: Bedding Division	Date:	2016-11-28
	Function Test Instructions	Author:	Jarek
		Model: RF358B	
Function Test Instructions of JLDK.33.03.14		Edition:	1.0
		Page 5 of 7	

1.16. Description of message mode 3



Every time when click "MODE 3" button, LED3 of the remote turns on,, the intensity of head and foot massage motors enhances by one level, there are three massage intensities totally. When in the third intensity, click "MODE 3" button again, the intensity level switches to 0, the mode cycles;

1.17. Head massage adjustment function



Every time when click "HEAD +" button, the intensity of head massage motor enhances by one level, there are three massage intensities totally. When in the third intensity, click "HEAD +" button again, the intensity level switches to 0, the mode cycles;

Every time when click "HEAD -" button, the intensity of head massage motor weakenes by one level, there are three massage intensities totally. When in the 0 intensity, click "HEAD -" button again, the intensity level switches to the third level, the mode cycles;

1.18. Foot massage adjustment function



Every time when click "FOOT +" button, the intensity of head massage motor enhances by one level, there are three massage intensities totally. When in the third intensity, click "FOOT +" button again, the intensity level switches to 0, the mode cycles;

Every time when click "FOOT -" button, the intensity of head massage motor weakenes by one level, there are three massage intensities totally. When in the 0 intensity, click "FOOT -" button again, the intensity level switches to the third level, the mode cycles;

	Issuing Department: Bedding Division	Date:	2016-11-28
	Function Test Instructions	Author:	Jarek
		Model: RF358B	
Function Test Instructions of JLDK.33.03.14		Edition:	1.0
		Page 6 of 7	

1.19. Message all on/off test



Click message all on/off button, if it is in a state that there is already a message motor on, then the operation will close message directly; if it is in a state that no message motor is on, then the operation will start the head and foot massage simultaneously (general mode, the first intensity)

Note: The message mode and LED instructions are as follows:

- 1** LED turns on, enters into message mode 1
- 2** LED turns on, enters into message mode 2
- 3** LED turns on, enters into message mode 3

Note: The default massage time is 10min;

1.20. Description of remote control current and backlight

After power on, observe the work current of remote (<40mA);

After the key operation, place still for 5s, the backlight of remote turns off and the remote enters into sleep mode. Observe the sleep current of remote control (< 10uA).

If the remote control enters into sleep mode, the remote can be wakened up by pressing any button or shaking; Continues to wake it up for 6 times and do not press any button, then you can only wake up the remote control by key operation.

Note: When the actuator is in flat position, and you press the memory position button, the motor can move to the theoretical angle or theoretical stroke, the error range will no more than 3 ° or 5mm.

	Issuing Department: Bedding Division	Date:	2016-11-28
	Function Test Instructions	Author:	Jarek
		Model: RF358B	
Function Test Instructions of JLDK.33.03.14		Edition:	1.0
		Page 7 of 7	

FCC warning:

Any Changes or modifications not expressly approved by the party responsible for compliance could void the user's authority to operate the equipment.

This device complies with part 15 of the FCC Rules. Operation is subject to the following two conditions: (1) This device may not cause harmful interference, and (2) this device must accept any interference received, including interference that may cause undesired operation.

For IC

This device complies with Innovation, Science and Economic Development Canada licence-exempt RSS standard (s). Operation is subject to the following two conditions: (1) this device may not cause interference, and (2) this device must accept any interference, including interference that may cause undesired operation of the device.

Le présent appareil est conforme aux CNR d'Innovation, Science and Economic Development Canada applicables aux appareils radio exempts de licence.

L'exploitation est autorisée aux deux conditions suivantes:

- (1) l'appareil ne doit pas produire de brouillage, et
- (2) l'utilisateur de l'appareil doit accepter tout brouillage radioélectrique subi, même si le brouillage est susceptible d'en compromettre le fonctionnement.