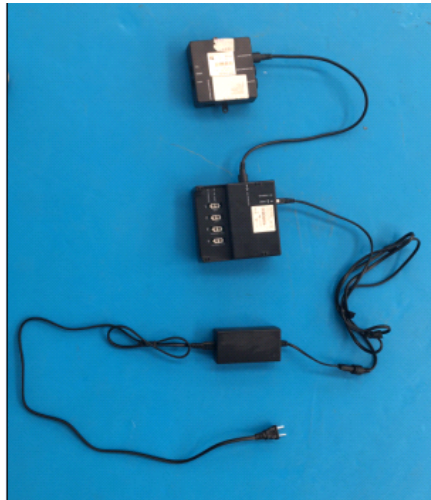


WiFi Control box UserManual

Connect the WiFi box cable to the control box Multifunction interface. Connect the control box to the 120V through the power supply.



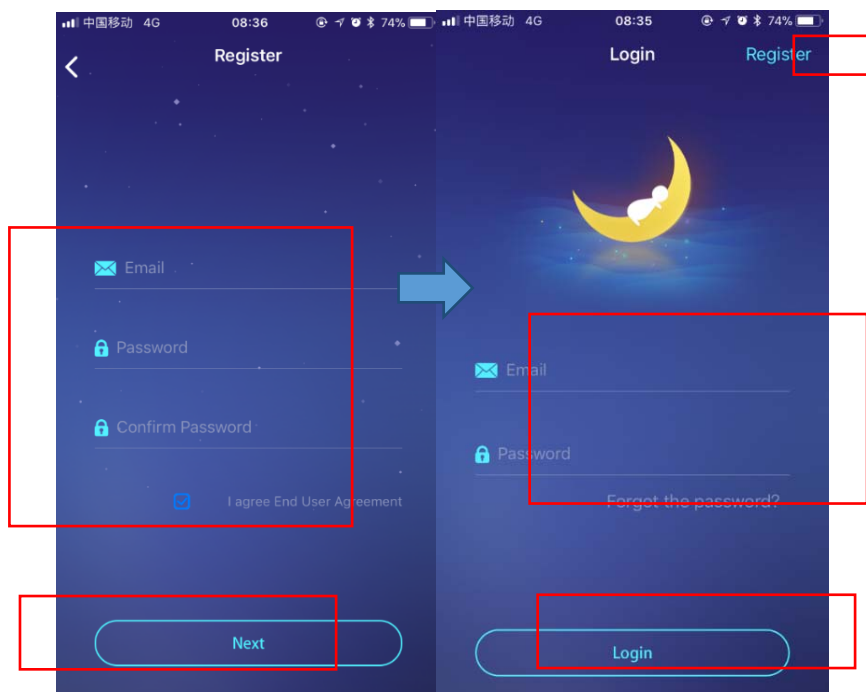
1. APP download

APP name: *GoSleeping*

You can download the APP from Apple app store and Google Play store.

2. User registration(via email)

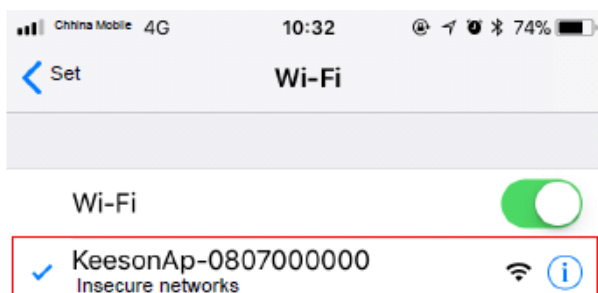
Register a new account and login.




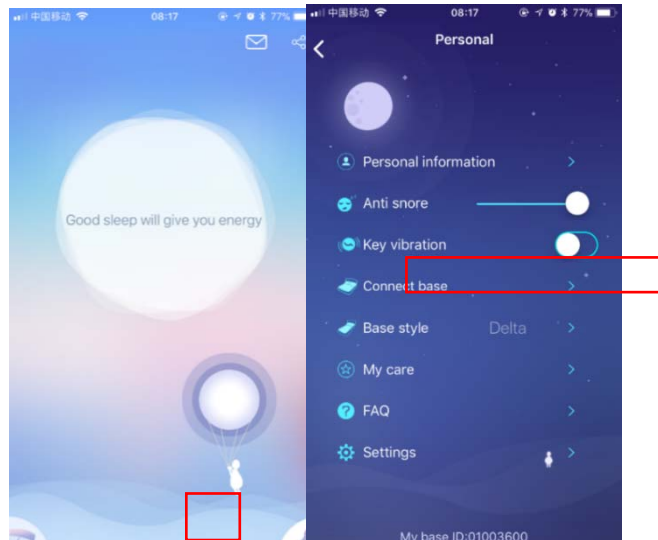
- ## 3. Press foot-up and foot-down on the remote about 5 seconds. The buzzer will make a sound of "Bee" every 3 seconds.



4. Open the WiFi settings interface on the phone. Select the WiFi with the name of "KeesonAp-xxxxxxx" . Wait for the WiFi connection to complete.



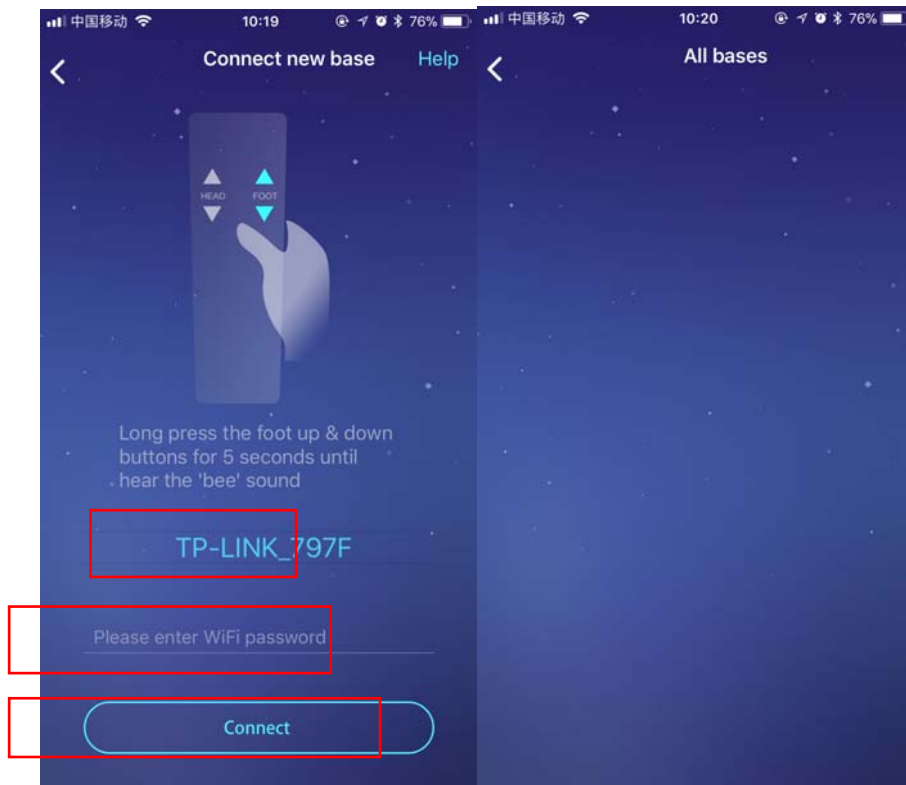
5. Open the GoSleeping,click the right corner button  to connect a base.



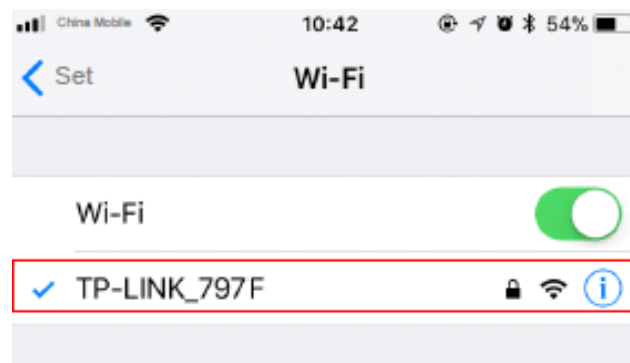
6. On the *Connect base* interface, click the *Connect new bed* button to enter the *Connect new base* interface.



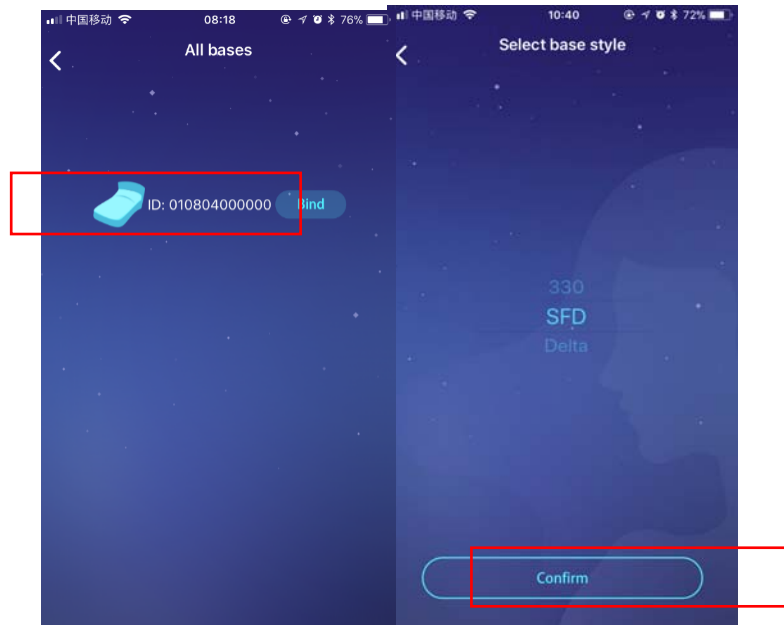
7. On the *Connect new base* interface, select the WiFi name that the WiFi box will connect to. Input WiFi Password, click the *Connect* button to enter the *All bases* interface. Wait for the WiFi box connect to the WiFi signal. When the WiFi box makes sound of "Bee-Bee" , it completes the connection.



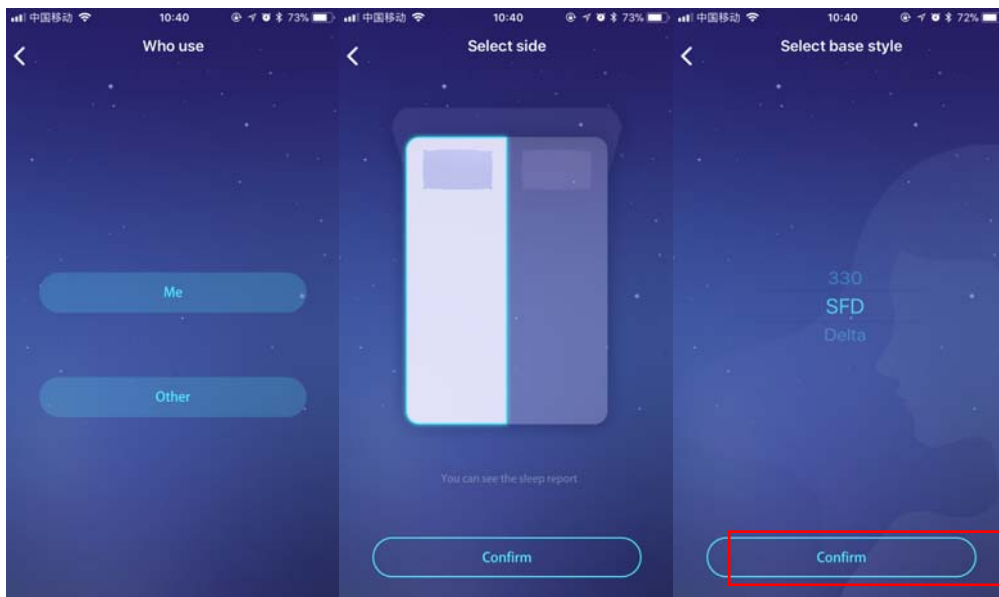
8. Open the WiFi settings interface on the phone. Select the WiFi name that the WiFi box has connected.




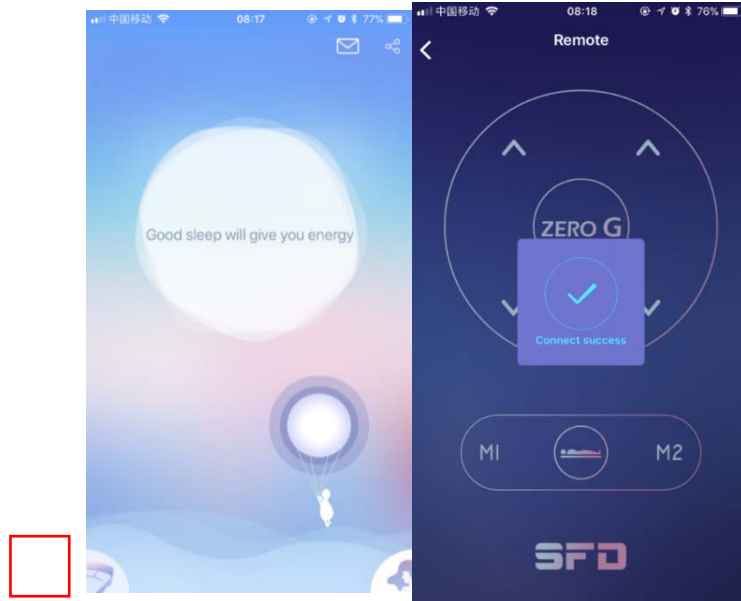
9. Return to the APP, on the *All bases* interface, wait for a moment, the WiFi box will be found, the ID will be displayed. Click the *Bind* button, then select the base type, click the *Confirm* button to finish the connection operation.



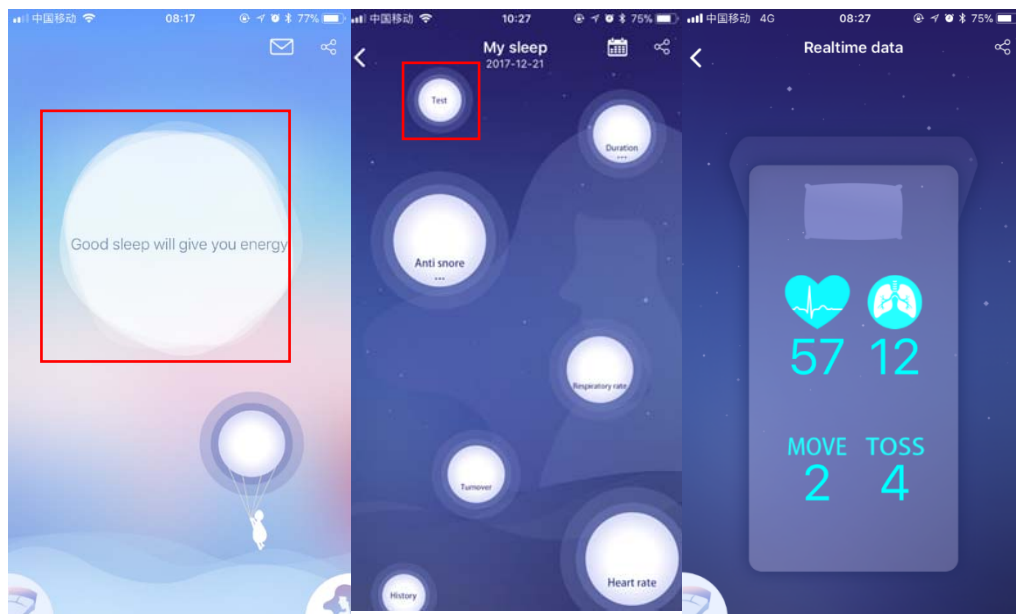
10. If the base is a double bed, after binding, select the side and base type click the *Confirm* button to finish the connection operation.



11. Return to the APP main interface,click the bottom left corner button  to control the base.



12. Return to the APP main interface, click the central button, then click the Test to view the real time vital sign data.



FAQ

Now WiFi dongle only support 2.4G WiFi network.

FCC Statement

Any Changes or modifications not expressly approved by the party responsible for compliance could void the user's authority to operate the equipment.

This device complies with part 15 of the FCC Rules. Operation is subject to the following two conditions: (1) This device may not cause harmful interference, and

(2) This device must accept any interference received, including interference that may cause undesired operation.

FCC Radiation Exposure Statement:

This equipment complies with FCC radiation exposure limits set forth for an uncontrolled environment. This equipment should be installed and operated with minimum distance 20cm between the radiator & your body.

ISED RSS Warning:

This device complies with Innovation, Science and Economic Development Canada licence-exempt RSS standard(s). Operation is subject to the following two conditions: (1) this device may not cause interference, and (2) this device must accept any interference, including interference that may cause undesired operation of the device.

Le présent appareil est conforme aux CNR d'ISED applicables aux appareils radio exempts de licence. L'exploitation est autorisée aux deux conditions suivantes: (1) l'appareil ne doit pas produire de brouillage, et (2) l'utilisateur de l'appareil doit accepter tout brouillage radioélectrique subi, même si le brouillage est susceptible d'en compromettre le fonctionnement.

ISED RF exposure statement:

This equipment complies with ISED radiation exposure limits set forth for an uncontrolled environment. This equipment should be installed and operated with minimum distance 20cm between the radiator & your body. This transmitter must not be co-located or operating in conjunction with any other antenna or transmitter.

Le rayonnement de la classe b respecte ISED fixaient un environnement non contrôlés. Installation et mise en œuvre de ce matériel devrait avec échangeur distance minimale entre 20 cm ton corps. Lanceurs ou ne peuvent pas coexister cette antenne ou capteurs avec d'autres.