



# Ci50R

## Information Sheet



Imagine a speaker that's no more obtrusive than a standard 50mm (2") low voltage downlighter, yet powerful enough to flood a sizeable space with high definition sound and designed to smoothly integrate and architecturally match with existing downlighting. Impressively vocal and superbly balanced, the Ci50R is a masterpiece of intelligent miniaturisation - and thanks to the design and specification

of the drive unit, a deceptively accomplished performer in real rooms. It is available with White, Chrome, Brass or Brushed Steel bezels to suit your tastes and décor. As visually discreet as a speaker can possibly be, the Ci50R delivers the listening pleasure to match its outstanding value for all but the most demanding installations. Small is beautiful.

### Features and Benefits:

Purpose-built for flush mounting into walls and ceilings, the Ci50R delivers KEF audio quality as unobtrusively as possible, and with KEF's standard lighting style fitting, you'll also find them amazingly easy and rapid to install.

**Ci series**  
custom installation speakers



KEF Audio (UK), Eccleston Road, Tovil, Maidstone, Kent, ME15 6QP U.K. Telephone: + 44 (0) 1622 672261. Fax: + 44 (0) 1622 750653

[www.kef.com](http://www.kef.com)

KEF America, 10 Timber Lane, Marlboro, New Jersey, 07746 USA. Telephone: + 1 732 683 2356. Fax: + 1 732 683 2358

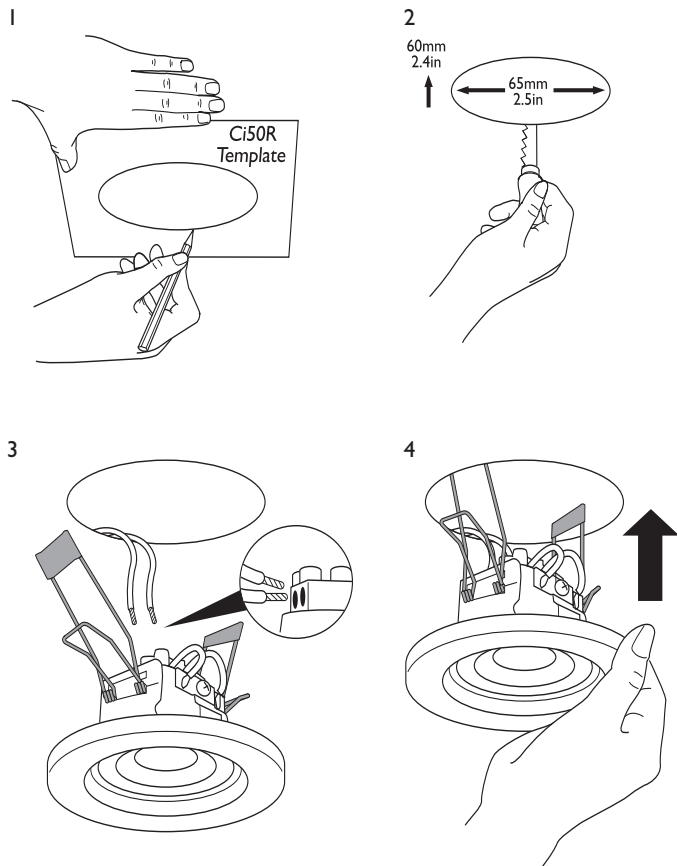
[www.kefamerica.com](http://www.kefamerica.com)

GP Acoustics GmbH, Heinrichstraße 51, D-44536 Lünen, Deutschland. Telephone: +49 (0) 231 9860-320. Fax: +49 (0) 231 9860-330.

[www.kefaudio.de](http://www.kefaudio.de)

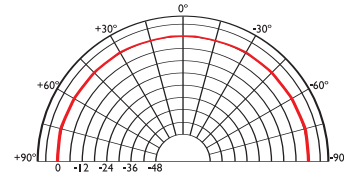
# Ci50R

## Installation

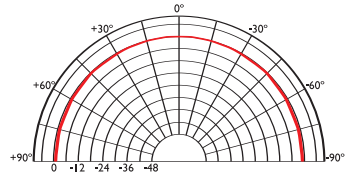


## Polar graphs

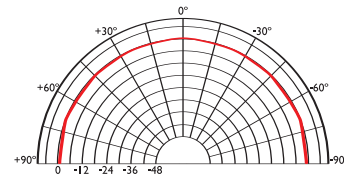
500Hz



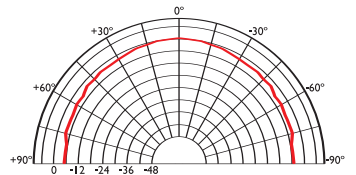
1kHz



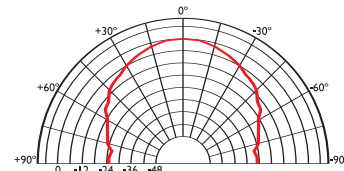
2kHz



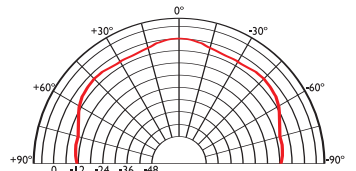
4kHz



8kHz



16kHz



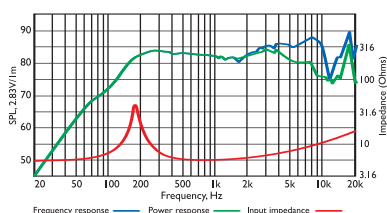
### Architectural specifications:

The Ci Series Ci50R comprises a 50mm full range speaker. Performance should meet or exceed the following criteria: frequency response 1 metre on-axis with swept sinewave shall be 155Hz to 20kHz, system sensitivity shall be at least 82dB

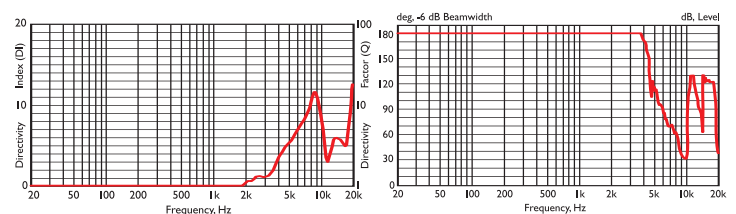
for 2.83V@1m. The driver impedance shall be 6 ohms. The Ci Series Ci50R is best suited for plastered or suspended ceilings where high quality background music and speech reinforcement applications require hi-fi performance such as:

- Multi Room systems.
- Lounges, Bars, Boutiques.
- Boardrooms & Offices.

## Frequency / Power response, Input impedance



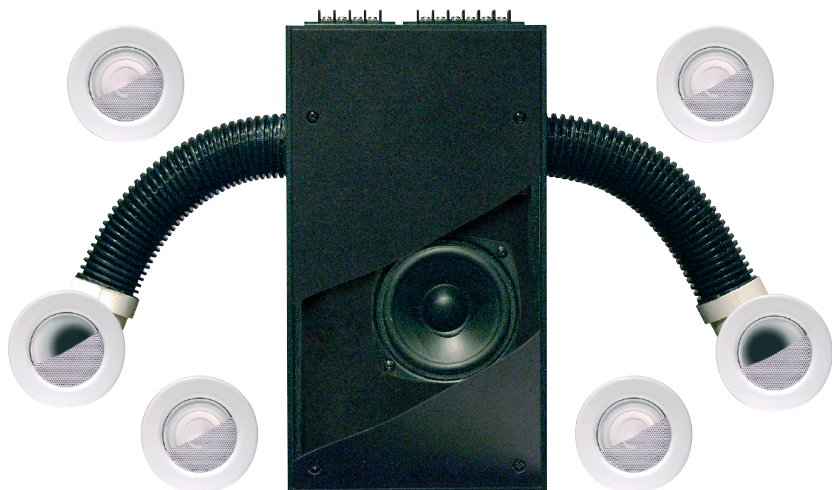
## Directivity Index / Beamwidth



## Specifications

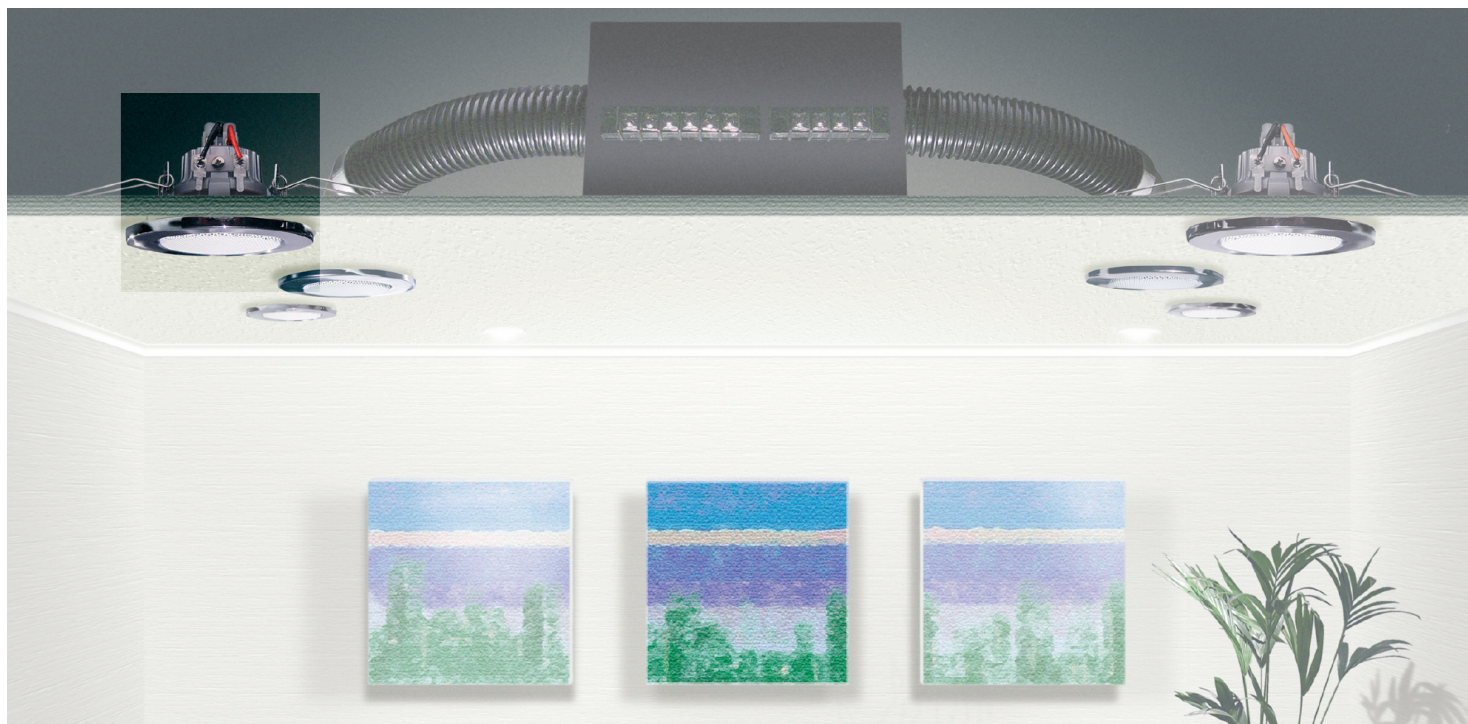
Frequency range	155Hz - 20kHz
Sensitivity (2.83v @ 1m)	82dB
Rec. amplifier power	10 - 30W
Nominal Impedance	6Ω (min. 5.5Ω)
Crossover Frequency	N/A

Enclosure material	N/A
Terminals	terminal blocks up to Ø2.5mm (0.1") conductor
Dimensions (Ø x depth)	Ø80mm x 55 mm, 3 x 2.25 in.
Net weight	0.135kg (0.3lbs)



## Ci50 SOUNDlight™ System

### Information Sheet



Loudspeaker installations don't come more discreet than the Ci50 Soundlight System. A full bandwidth sound system consisting of four satellite speakers and a twin-ported subwoofer, the only visible components are designed to be virtually indistinguishable from a standard 50mm low voltage light fitting once installed. The subwoofer itself is hidden out of sight in the ceiling void, with a 100mm (4") dual

coil bass driver pumping sound into the room via two ingenious flexible ports. There's nothing discreet about the way it performs, though - by combining high quality drivers with innovative KEF engineering, response is fluid and accurate across the frequency range and the sound image has astonishing clarity and power for the speaker size.

#### Features and Benefits:

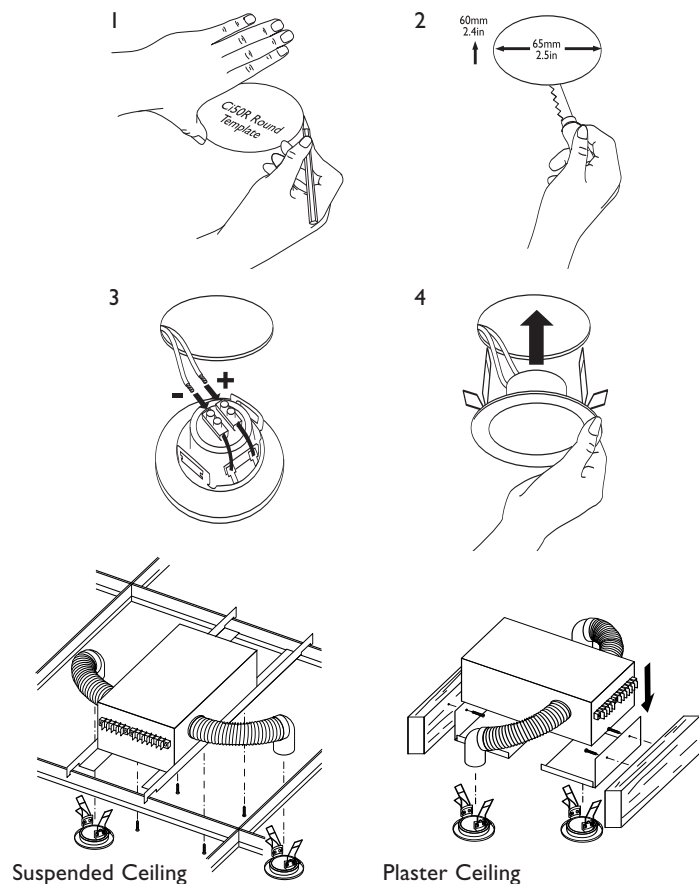
The Ci50 Soundlight System combines 10-100W per channel power handling and 88dB sensitivity, for a maximum in-room SPL of 92dB. The Ci50 Soundlight System is purpose-built for flush mounting into walls and ceilings. The Ci50R speakers are mounted with KEF's standard lighting style fitting. It is available in White, Chrome, Brass or Brushed Steel bezels. The Ci50SW subwoofer is ceiling mounted by using the joist or suspended ceiling brackets included.

**Ci series**  
custom installation speakers

**KEF®**

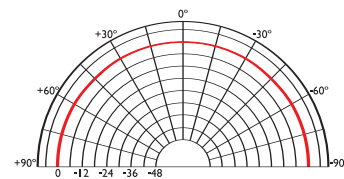
# Ci50 SOUNDlight™ System

## Installation

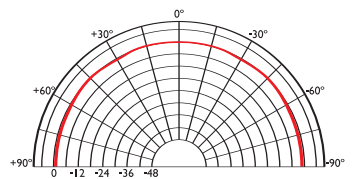


## Polar graphs

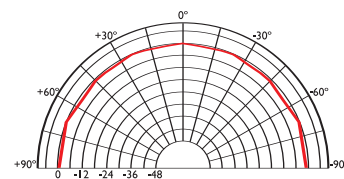
500Hz



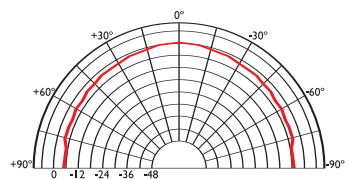
1kHz



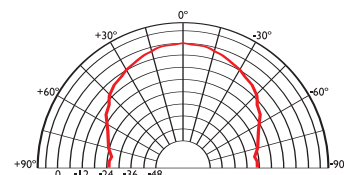
2kHz



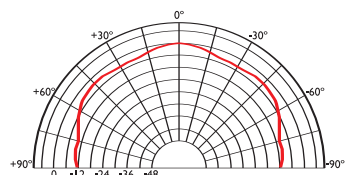
4kHz



8kHz



16kHz



### Architectural specifications:

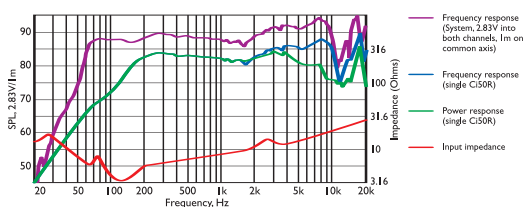
The Ci Series Ci50 Soundlight System comprises four satellite Ci50R 50mm full range speakers and a band pass, dual ported Ci50SV subwoofer with a 100mm, dual coil bass unit, and passive crossovers, for in-ceiling void installation.

System performance should meet or exceed the following criteria: frequency response 1 metre on-axis with swept sine wave shall be 62Hz to 20kHz, system sensitivity shall be at least 88dB for 2.83V@1m, both channels driven. The system impedance shall be 4 ohms.

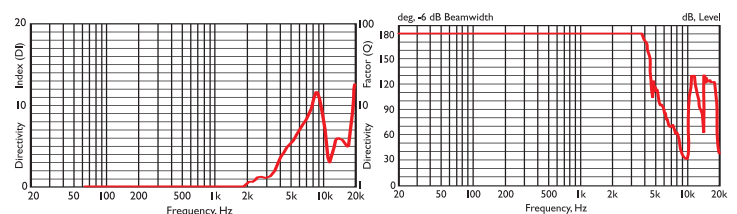
The Ci Series Ci50 Soundlight System is best suited where high quality background music and speech reinforcement applications require hi-fi performance such as:

- Multi Room systems.
- Lounges, Bars, Boutiques.
- Boardrooms & Offices.

## Frequency / Power response, Input impedance



## Directivity Index / Beamwidth



## Specifications

Frequency range	62Hz - 20kHz
Sensitivity (2.83v @ 1m)	88dB
Rec. amplifier power	10 - 100W
Nominal Impedance	4Ω (min. 3.2Ω)
Crossover Frequency	220Hz

Enclosure material (Subwoofer)	MDF
Terminals	terminal blocks up to Ø2.5mm (0.1") conductor
Dimensions (Full range)	Ø80 x 55 mm deep, Ø3 x 2.25 in. deep
(Subwoofer H x W x D)	342 x 180 x 104 mm, 13.5 x 7 x 4 in.
Net weight	4.14kg (9.1lbs) (System)



# Ci80QR

## Information Sheet



The quality of a speaker is no less important just because it's out of sight - in fact, with ceiling-mounted units, it can be more so. Designed to smoothly integrate and architecturally match with existing downlighting sharing the same size bezel, KEF's trademark Uni-Q® technology has a decisive performance advantage in these applications, because each point source

driver array evenly disperses the sound, ensuring a smooth frequency response over a large area to create a spacious three-dimensional soundscape with genuine texture and depth. With a Uni-Q array of 80mm (3"), the Ci80QR is as satisfyingly musical to hear as it is neat in appearance.

### Features and Benefits:

Purpose built for flush mounting into walls and ceilings these are the latest addition to the KEF Uni-Q Custom Installation series. Providing a compact solution to the problem of Hi-Fi quality sound from an in-wall/ceiling speaker, the 80QR consists of a polypropylene cone LF driver with the HF unit mounted at the acoustic centre of the LF unit.

The bezel and grill can be painted to match the interior décor.

**Ci series**  
custom installation speakers

**KEF®**

KEF Audio (UK), Eccleston Road, Tovil, Maidstone, Kent, ME15 6QP U.K. Telephone: + 44 (0) 1622 672261. Fax: + 44 (0) 1622 750653

[www.kef.com](http://www.kef.com)

KEF America, 10 Timber Lane, Marlboro, New Jersey, 07746 USA. Telephone: + 1 732 683 2356. Fax: + 1 732 683 2358

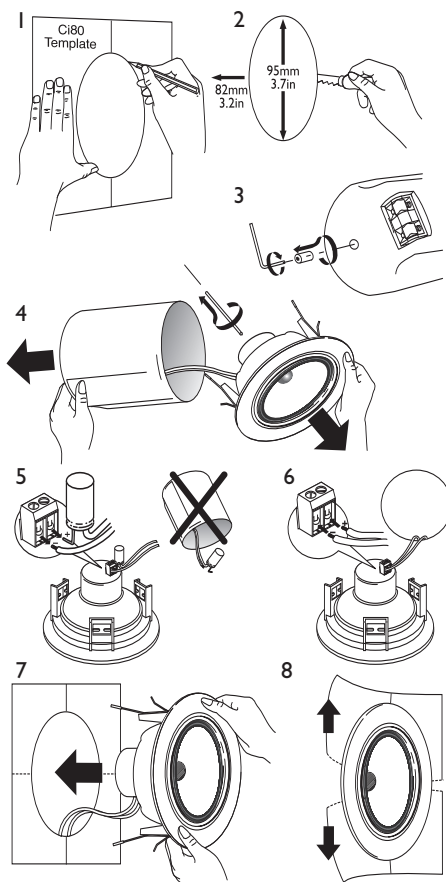
[www.kefamerica.com](http://www.kefamerica.com)

GP Acoustics GmbH, Heinrichstraße 51, D-44536 Lünen, Deutschland. Telephone: +49 (0) 231 9860-320. Fax: +49 (0) 231 9860-330.

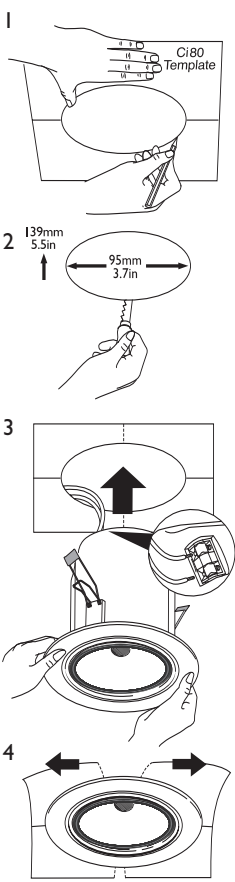
[www.kefaudio.de](http://www.kefaudio.de)

# Ci80QR

## Installation

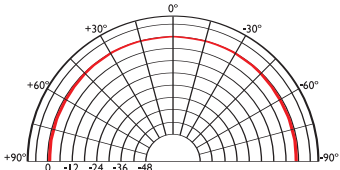


## (Ceiling Install)

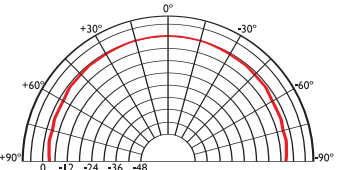


## Polar graphs

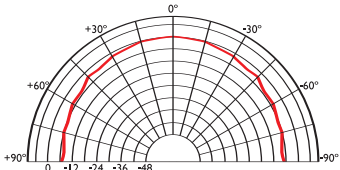
500Hz



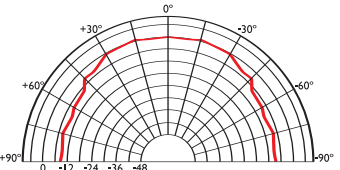
1kHz



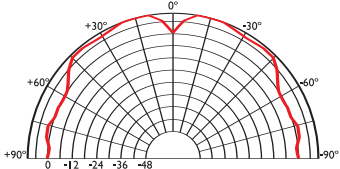
2kHz



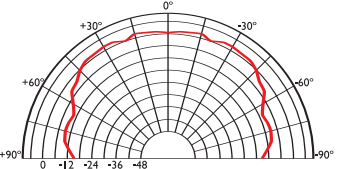
4kHz



8kHz



16kHz



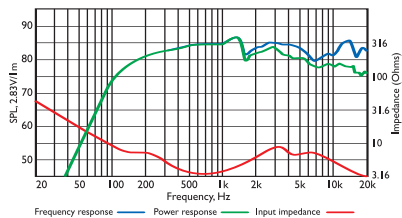
## Architectural specifications:

The Ci Series Ci80QR comprises Uni-Q® 15mm aluminium dome tweeter with 80mm white polypropylene bass/mid unit with double neo compound magnet system. Performance should meet or exceed the following criteria: frequency response

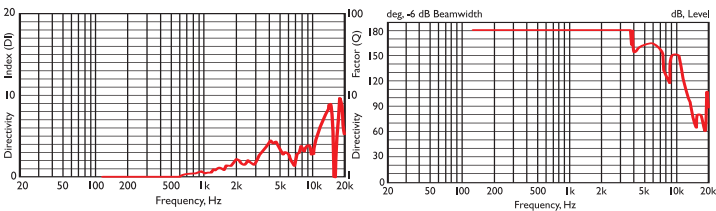
1 metre on-axis with swept sinewave shall be 130Hz to 27kHz, sensitivity shall be at least 85dB for 2.83V@1m. The impedance shall be 4 ohms. The Ci Series Ci80QR is best suited where high quality music and speech reinforcement applications require hi-fi performance such as:

- Multi Room systems.
- Home Theatre systems.
- Lounges, Bars, Boutiques.
- Boardrooms & Offices.

## Frequency / Power response, Input impedance



## Directivity Index / Beamwidth



## Specifications

Frequency range	130Hz - 27kHz*	100Hz - 27kHz**
Sensitivity (2.83v @ 1m)	85dB	
Rec. amplifier power	10 - 50W	
Nominal Impedance	4Ω (min. 3.2Ω)	
Crossover Frequency	3kHz	

\*With back can \*\*Without back can

Enclosure material	ABS
Terminals	spring terminals up to Ø2.5mm (0.1") conductor
Dimensions (Ø x depth)	Ø103 x 138 mm, 4.1 x 5.5 in.*    Ø103 x 30 mm, 4.1 x 1.2 in.**
Net weight	0.7kg (1.54lbs)*    0.6kg (1.32lbs)**



# Ci 100QR

## Information Sheet



The quality of a speaker is no less important just because it's out of sight - in fact, with ceiling-mounted units, it can be more so. Designed to smoothly integrate and architecturally match with existing downlighting sharing the same size bezel, KEF's trademark Uni-Q® technology has a decisive performance advantage in these applications, because each point source

driver array evenly disperses the sound, ensuring a smooth frequency response over a large area to create a spacious three-dimensional soundscape with genuine texture and depth.

With a two-way Uni-Q driver of 100mm (4"), the Ci100QR is as satisfyingly musical to hear as it is neat in appearance.

### Features and Benefits:

Purpose built for flush mounting into walls and ceilings these are the latest addition to the KEF Uni-Q Custom Installation series. Providing a compact solution to the problem of Hi-Fi quality sound from an in-wall/ceiling speaker, the Ci100QR consists of a polypropylene cone LF driver with the HF unit mounted at the acoustic centre of the LF unit.

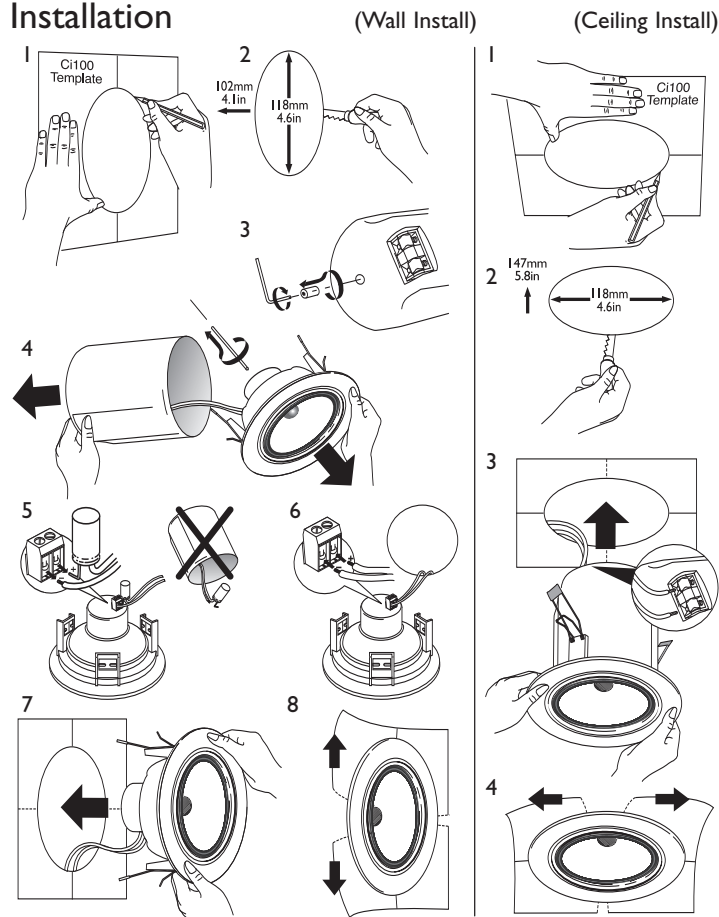
The bezel and grill can be painted to match the interior décor.

**Ci series**  
custom installation speakers

**KEF®**

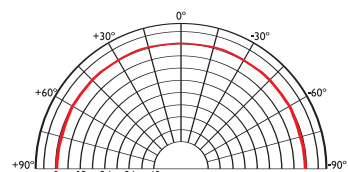
# Ci 100QR

## Installation

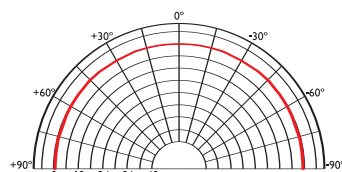


## Polar graphs

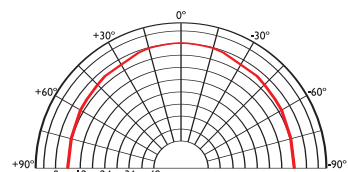
500Hz



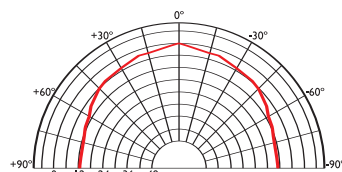
1kHz



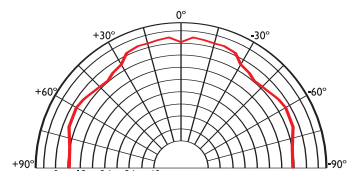
2kHz



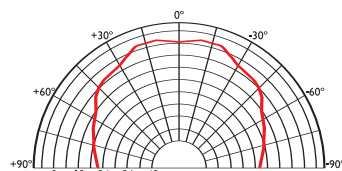
4kHz



8kHz



16kHz



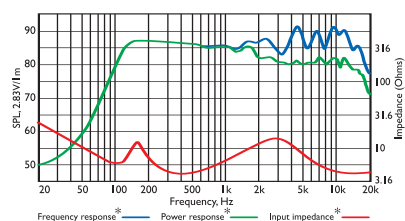
## Architectural specifications:

The Ci Series Ci100QR comprises Uni-Q® 19mm aluminium dome tweeter with 100mm white polypropylene bass/mid unit with double neo compound magnet system. Performance should meet or exceed the following criteria: frequency response

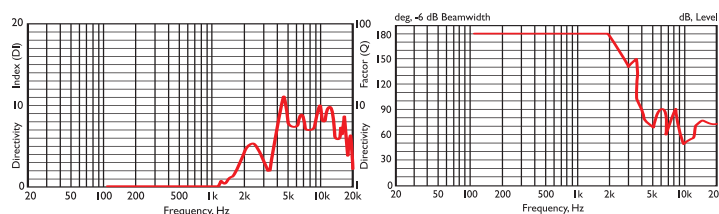
1 metre on-axis with swept sinewave shall be 80Hz to 27kHz, sensitivity shall be at least 88dB for 2.83V@1m. The impedance shall be 4 ohms. The Ci Series Ci100QR is best suited where high quality music and speech reinforcement applications require hi-fi performance such as:

- Multi Room systems.
- Home Theatre systems.
- Lounges, Bars, Boutiques.
- Boardrooms & Offices.

## Frequency / Power response, Input impedance



## Directivity Index / Beamwidth



## Specifications

Frequency range	110Hz - 27kHz*	80Hz - 27kHz**
Sensitivity (2.83v @ 1m)	88dB	
Rec. amplifier power	10 - 50W	
Nominal Impedance	4Ω (min. 4.1Ω)	
Crossover Frequency	3kHz	

Enclosure material	ABS	
Terminals	spring terminals up to Ø2.5mm (0.1") conductor	
Dimensions (Ø x depth)	Ø127 x 153 mm, 5 x 6 in.*	Ø127 x 100 mm, 5 x 4 in.**
Net weight	0.8kg (1.76lbs)*	0.7kg (1.54lbs)**

\*With back can \*\*Without back can



# Ci130DS

## Information Sheet



When partnering with others in the range try the Ci130DS as the perfect companion for creating a high performance built-in home theatre.

A 2-way, 3 driver, flush-mount dipole loudspeaker, it can be mounted in the walls or ceiling allowing far greater flexibility in positioning than any of the competition. Housed in the enclosure to ensure optimum performance regardless of the volume of cavity placement, the pair of

mid/HF units are angled 80° apart - to obtain a dipolar radiation pattern - with the bass unit firing on-axis to the listening position. The driver configuration is set into a moulded baffle with smooth contours to improve dispersion. With its unique properties such as switchable bipole/dipole radiation pattern the Ci130DS makes a versatile partner with others in the range such as the Ci200.2QT.

### Features and Benefits:

Ci130DS combines 60W power handling and 88dB sensitivity for a maximum output of 106dB.

The 3-driver configuration has a mounting depth of just 88mm (3½").

Best suited to high quality Music Surround and Home Theatre applications, for all the usual surround sound (including digital) formats.

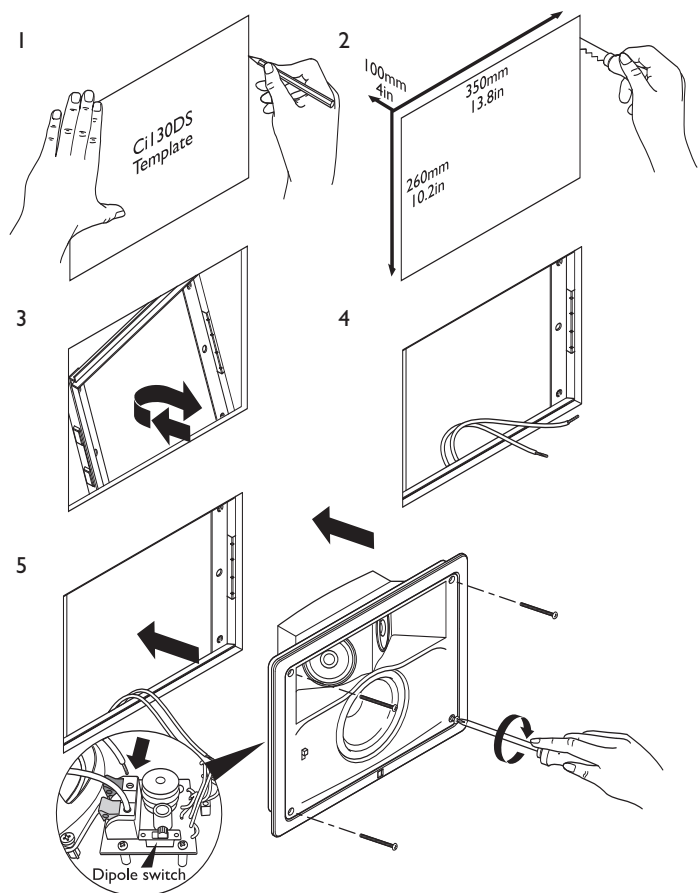
The stainless steel bezel and grille can be painted or covered by fabric to match the interior décor.

**Ci series**  
custom installation speakers



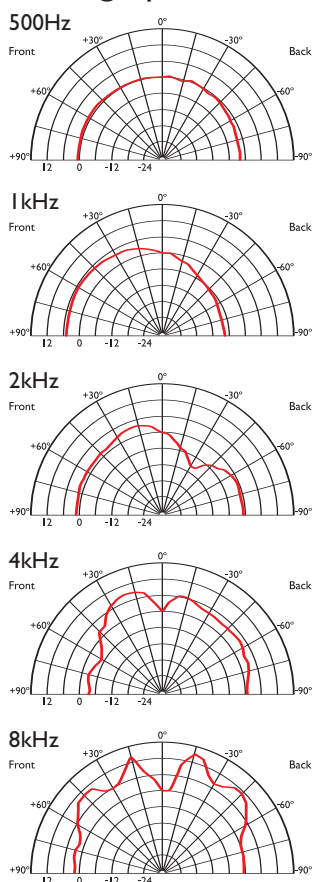
# Ci130DS

## Installation

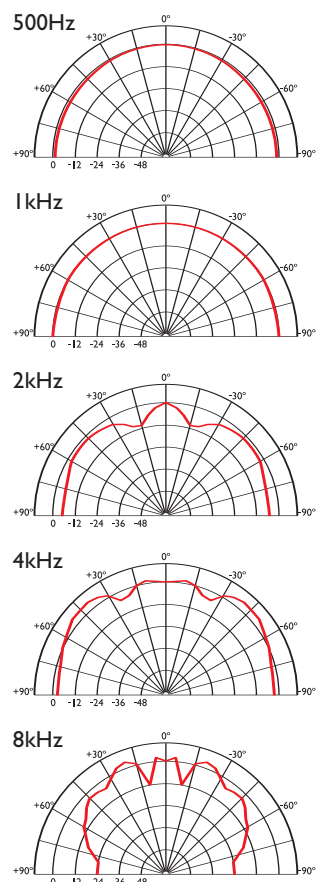


## Polar graphs

### Dipole



### Bipole



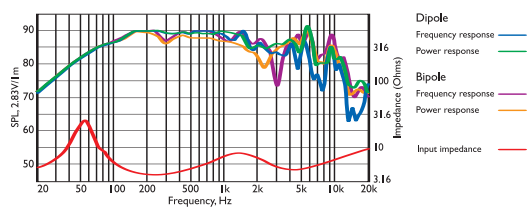
## Architectural specifications:

The Ci Series Ci130DS comprise two 80mm polypropylene mid/HF units and one 130mm polypropylene bass unit. Performance should meet or exceed the following criteria: frequency response 1 metre on-axis with swept sinewave shall be 70Hz to 8kHz, sensitivity shall be at

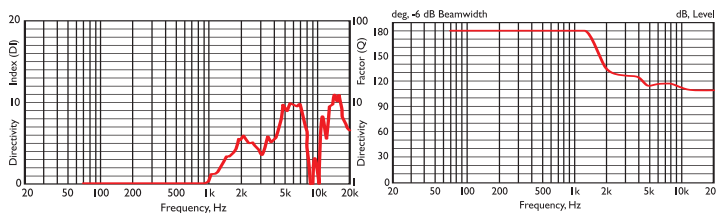
least 88dB for 2.83V@1m. The impedance and maximum power shall be 60W at 4 ohms. The Ci Series Ci130DS is a bipole/dipole loudspeaker, best suited at the rear side or back walls or rear of ceilings where high quality theatre applications require hi-fi performance such as:

- Multi Room systems.
- Home Theatre systems.
- Boardrooms & Offices.

## Frequency / Power response, Input impedance



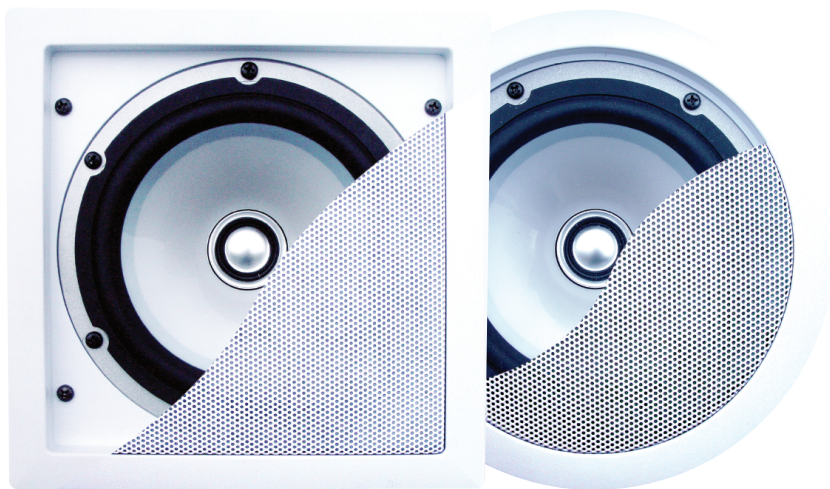
## Directivity Index / Beamwidth (Bipole mode)



## Specifications

Frequency range	70Hz - 8kHz
Sensitivity (2.83v @ 1m)	88dB
Rec. amplifier power	10 - 60W
Nominal Impedance	4Ω (min. 3.9Ω)
Crossover Frequency	750Hz

Enclosure material	N/A
Terminals	spring terminals up to Ø2.5mm (0.1") conductor
Dimensions (H x W x D)	277 x 367 x 103 mm, 10.9 x 14.4 x 4 in.
Net weight	2.8kg (6.2lbs)



# Ci130.2QS/QR

## Information Sheet



Intended to be as unobtrusive as possible, the Ci Series Ci130.2QS and Ci130.2QR are high-fidelity flush-mount loudspeakers utilising KEF's Uni-Q® driver array technology. This gives the round and square bezel speakers the inherent smooth dispersion characteristics to fill any normal room with an expansive, generous and rich sound stage.

Equally at home - the square speaker in the wall or round speaker in the ceiling - the driver array is mounted into a moulded ABS baffle and can be easily and quickly installed with the moisture-resistant bracket and fixings allowing placement in the harshest environments, such as bathrooms or even outside (under eaves).

### Features and Benefits:

The Ci130.2QS and Ci130.2QR combine 50W power handling and 86dB sensitivity. A 130mm (5¼") bass/mid driver giving good bass extension along with a 19mm (¾") aluminium dome tweeter provide excellent power handling and smooth response.

The bezel and grille can be painted or covered by fabric to match the interior décor.

**Ci series**  
custom installation speakers

**KEF®**

KEF Audio (UK), Eccleston Road, Tovil, Maidstone, Kent, ME15 6QP U.K. Telephone: + 44 (0) 1622 672261. Fax: + 44 (0) 1622 750653

[www.kef.com](http://www.kef.com)

KEF America, 10 Timber Lane, Marlboro, New Jersey, 07746 USA. Telephone: + 1 732 683 2356. Fax: + 1 732 683 2358

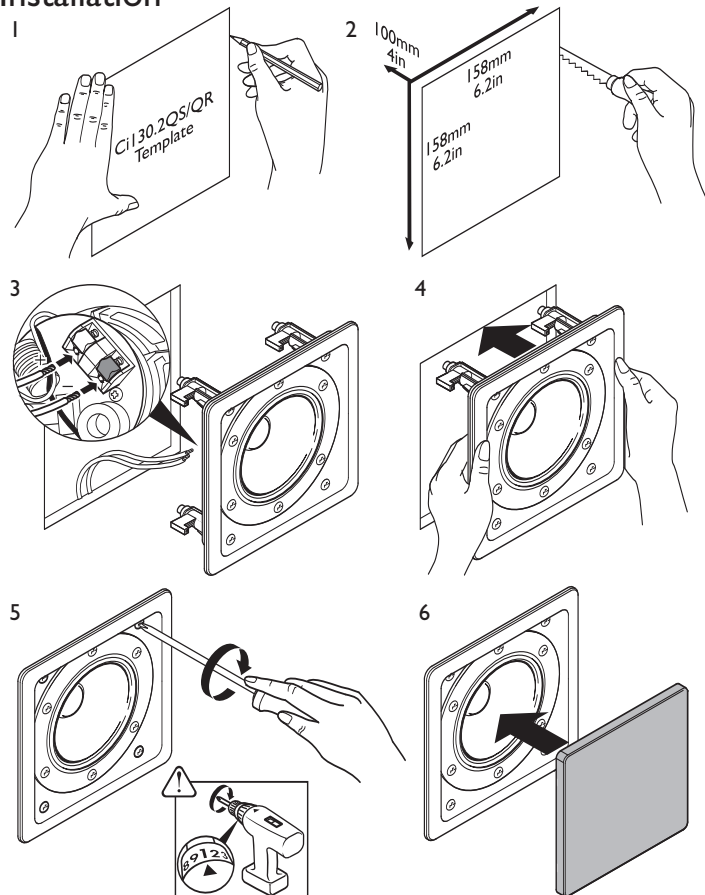
[www.kefamerica.com](http://www.kefamerica.com)

GP Acoustics GmbH, Heinrichstraße 51, D-44536 Lünen, Deutschland. Telephone: +49 (0) 231 9860-320. Fax: +49 (0) 231 9860-330.

[www.kefaudio.de](http://www.kefaudio.de)

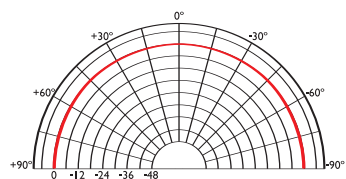
# Ci130.2QS/QR

## Installation

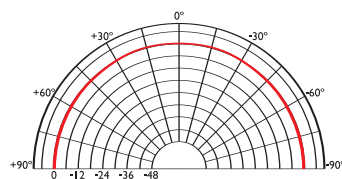


## Polar graphs

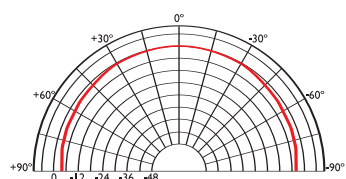
500Hz



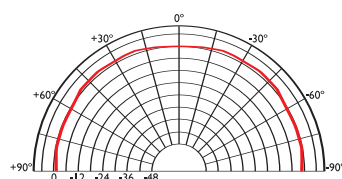
1kHz



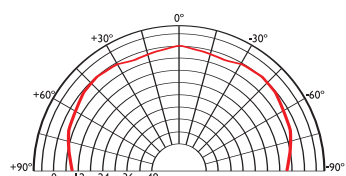
2kHz



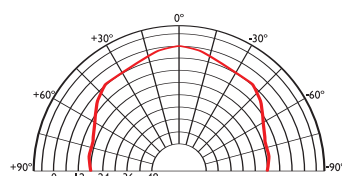
4kHz



8kHz



16kHz



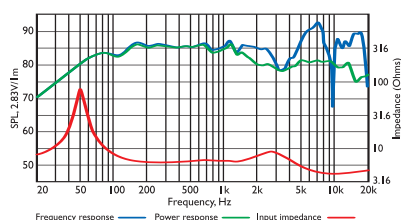
## Architectural specifications:

The Ci Series Ci130.2QS and Ci130.2QR comprise a Uni-Q® coincident mounted 19mm aluminium dome tweeter with a 130mm white polypropylene bass/mid unit. Performance should meet or exceed the following criteria: frequency response 1 metre on-axis with swept sine wave shall

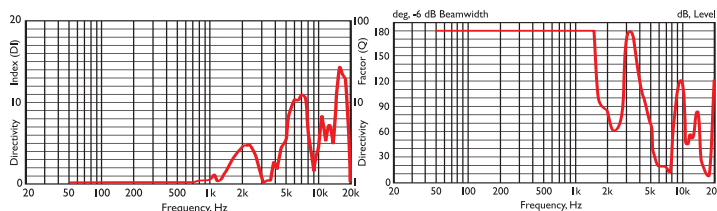
be 50Hz to 40kHz QS, 100Hz to 40kHz QR, sensitivity shall be at least 86dB for 2.83V@1m. The impedance and maximum power shall be 50W at 8 ohms. The Ci Series Ci130.2QS and Ci130.2QR is best suited where high quality music and speech reinforcement applications require hi-fi performance such as:

- Multi Room systems.
- Home Theatre systems.
- Lounges, Bars, Boutiques.
- Boardrooms & Offices.
- Airports, Convention Centres, Hotels.

## Frequency / Power response, Input impedance



## Directivity Index / Beamwidth



## Specifications

Frequency range $\pm 3\text{dB}$	QS: 50Hz - 40kHz, QR: 100Hz - 40kHz
Sensitivity (2.83v @ 1m)	86dB
Rec. amplifier power	10 - 50W
Nominal Impedance	8 $\Omega$ (min. 3.2 $\Omega$ )
Crossover Frequency	2.8kHz

Enclosure material	Steel with QR
Terminals	spring terminals up to $\varnothing 2.5\text{mm}$ (0.1")*
Dimensions (H x W x D)	180 x 180 x 105 mm, 7.1 x 7.1 x 4.1 in QS $\varnothing 180 \times 105 \text{ mm}$ , 7.1 x 4.1 in QR**
Net weight	1.3kg (2.9lbs) QS, 1.7kg (3.7lbs) QR

\* Block terminals up to  $\varnothing 2.5\text{mm}$  with Ci130.2QR enclosure.

\*\* Depth 154mm (6in) with Ci130.2QR enclosure.



## KEF UNI-Q® LOUDSPEAKERS

# Ci160.2QS/QR

## Information Sheet



These are the Ci160.2QS and Ci160.2QR. Like KEF's smaller version Ci130QS/QR these share the same Uni-Q® driver array technology that provides your living space with an expansive soundscape, excellent bass extension thus creating the perfect sound stage.

You have the versatility of either placing square speakers in the walls or round speakers in the ceiling and, thanks to KEF's

simple and ingenious screw down clamping system, you'll also find them easy and quick to install.

Designed with moisture-resistant fixings allowing placement in the harshest environments such as bathrooms or even outside (under eaves).

The Ci160.2QS and Ci160.2QR give genuine performance - and great value.

### Features and Benefits:

The 2-way Ci160.2QS and Ci160.2QR combine 100W power handling and 89dB sensitivity, for a maximum output of 108dB. A 160mm (6½") polypropylene cone bass/mid unit with a coincident mounted 25mm (1") soft dome, ferrofluid cooled high-frequency unit gives superb off-axis dispersion characteristics.

The bezel and grille can be painted or covered by fabric to match the interior décor.

**Ci series**  
custom installation speakers

**KEF®**

KEF Audio (UK), Eccleston Road, Tovil, Maidstone, Kent, ME15 6QP U.K. Telephone: + 44 (0) 1622 672261. Fax: + 44 (0) 1622 750653

KEF America, 10 Timber Lane, Marlboro, New Jersey, 07746 USA. Telephone: + 1 732 683 2356. Fax: + 1 732 683 2358

GP Acoustics GmbH, Heinrichstraße 51, D-44536 Lünen, Deutschland. Telephone: +49 (0) 231 9860-320. Fax: +49 (0) 231 9860-330.

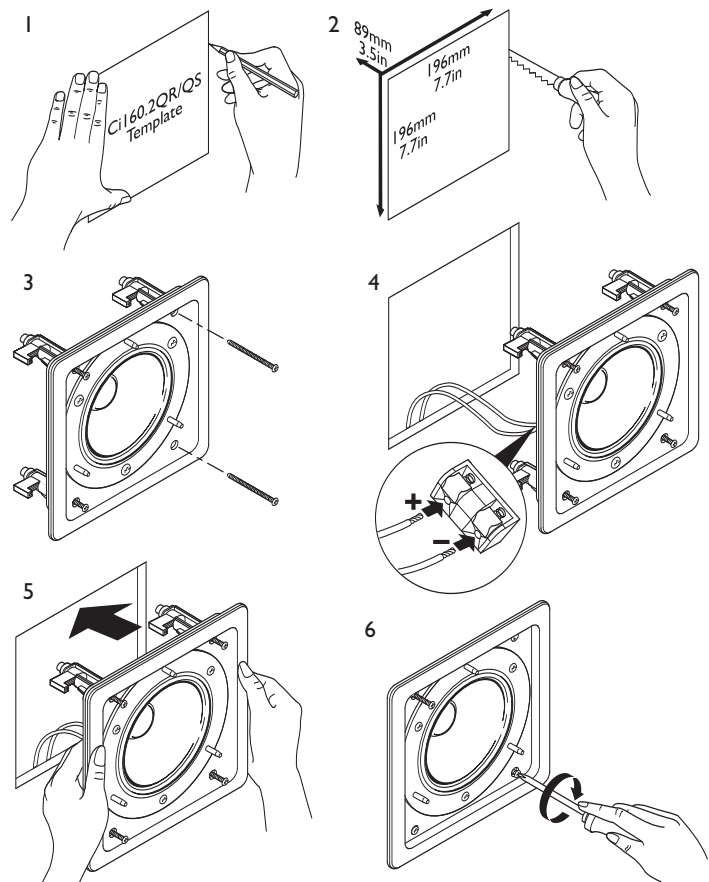
[www.kef.com](http://www.kef.com)

[www.kefamerica.com](http://www.kefamerica.com)

[www.kefaudio.de](http://www.kefaudio.de)

# Ci160.2QS/QR

## Installation



### Architectural specifications:

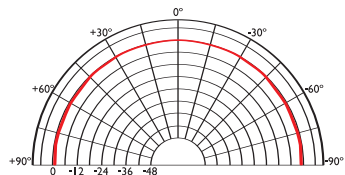
The Ci Series Ci160.2QS and Ci160.2QR comprise a Uni-Q® coincident mounted 25mm soft dome ferrofluid cooled tweeter with 160mm white polypropylene bass/mid unit. Performance should meet or exceed the following criteria: frequency response 1 metre on-axis with swept

sinewave shall be 60Hz to 20kHz, sensitivity shall be at least 89dB for 2.83V@1m. The impedance and maximum power shall be 100W at 8 ohms. The Ci Series Ci160.2QS and Ci160.2QR is best suited where high quality music and speech reinforcement applications require hi-fi performance such as:

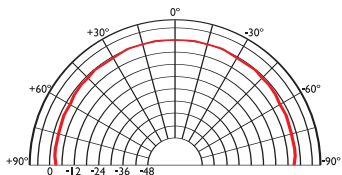
- Multi Room systems.
- Home Theatre systems.
- Lounges, Bars, Boutiques.
- Boardrooms & Offices.
- Airports, Convention Centres, Hotels.
- Live Theatre/Concert Hall fill-in.
- Houses of Worship.
- Sports Arenas.

## Polar graphs

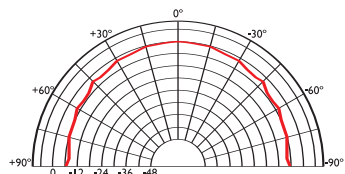
500Hz



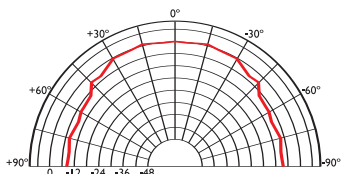
1kHz



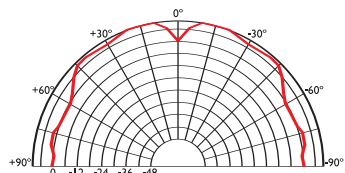
2kHz



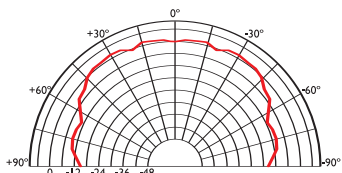
4kHz



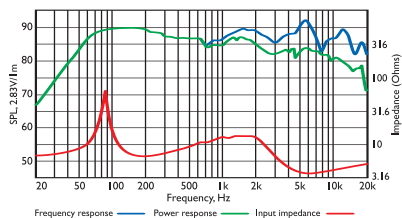
8kHz



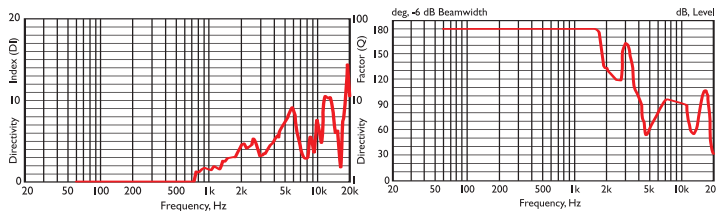
16kHz



## Frequency / Power response, Input impedance



## Directivity Index / Beamwidth



## Specifications

Frequency range	60Hz - 20kHz
Sensitivity (2.83v @ 1m)	89dB
Rec. amplifier power	10 - 100W
Nominal Impedance	8Ω (min. 3.7Ω)
Crossover Frequency	2.8kHz

Enclosure material	N/A
Terminals	spring terminals up to Ø2.5mm (0.1") conductor
Dimensions (H x W x D)	220 x 220 x 93 mm, 8.7 x 8.7 x 3.7 in.
Net weight	1.5kg (3.3lbs)



# Ci160.2FS/FR

## Information Sheet



The full range Ci160.2FS and Ci160.2FR share with the smaller Ci130FS/FR, KEF's ideal to produce serious custom installation speakers at an affordable yet competitive price.

They are perfectly suited for the high quality music and speech reinforcement applications where good hi-fi performance is required.

Add to that the versatility of flush mounting the square speaker in walls or the round speaker in the ceiling.

Easy and quick installation is provided by KEF's simple and ingenious screw down clamping system.

Designed with moisture-resistant fixings allowing placement in the harshest environments such as bathrooms or even outside (under eaves).

There is virtually no limit to the design possibilities that these custom installation speakers can offer.

The full range Ci160.2FS and Ci160.2FR. Economic on price, never on performance.

### Features and Benefits:

Ci160.2FS and Ci160.2FR combines 100W power handling and 89dB sensitivity, for a maximum output of 108dB.

A 160mm (6½") full range driver provides smooth high frequency output.

The bezel and grille can be painted or covered by fabric to match the interior décor.

**Ci series**  
custom installation speakers

**KEF®**

KEF Audio (UK), Eccleston Road, Tovil, Maidstone, Kent, ME15 6QP U.K. Telephone: + 44 (0) 1622 672261. Fax: + 44 (0) 1622 750653

KEF America, 10 Timber Lane, Marlboro, New Jersey, 07746 USA. Telephone: + 1 732 683 2356. Fax: + 1 732 683 2358

GP Acoustics GmbH, Heinrichstraße 51, D-44536 Lünen, Deutschland. Telephone: +49 (0) 231 9860-320. Fax: +49 (0) 231 9860-330.

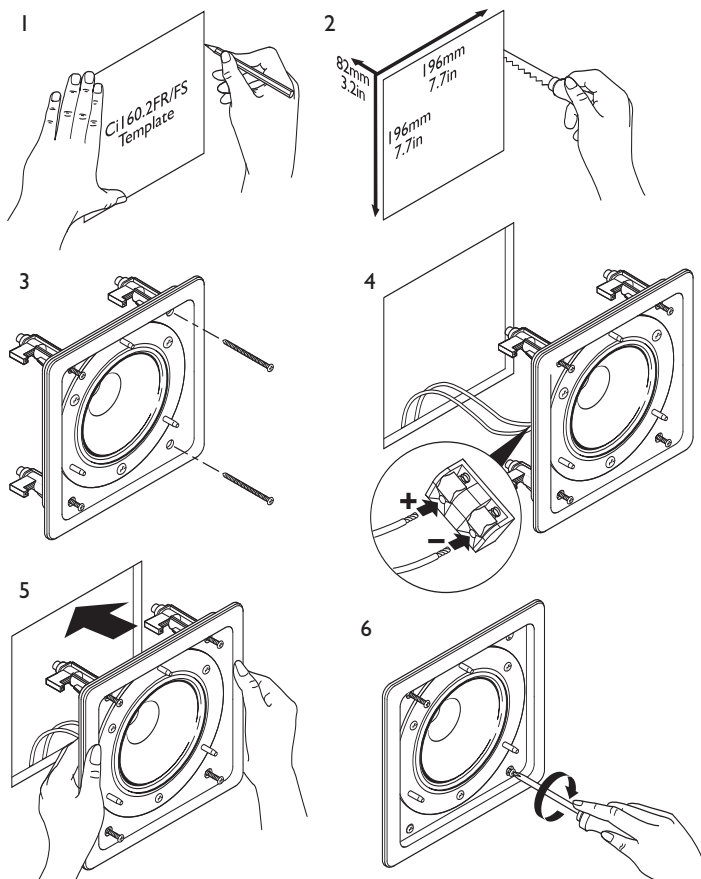
[www.kef.com](http://www.kef.com)

[www.kefamerica.com](http://www.kefamerica.com)

[www.kefaudio.de](http://www.kefaudio.de)

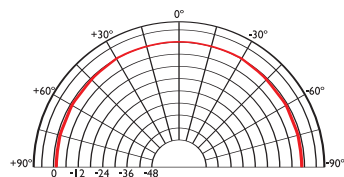
# Ci160.2FS/FR

## Installation

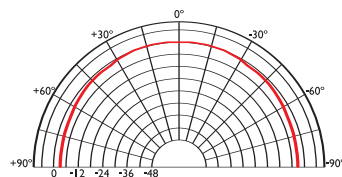


## Polar graphs

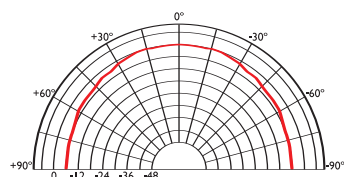
500Hz



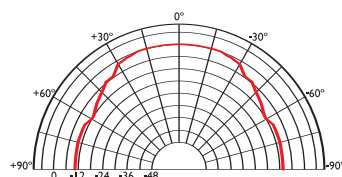
1kHz



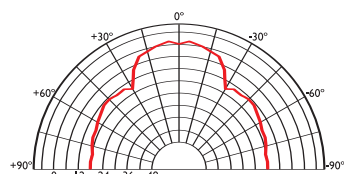
2kHz



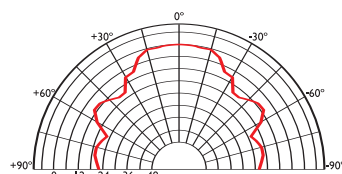
4kHz



8kHz



16kHz



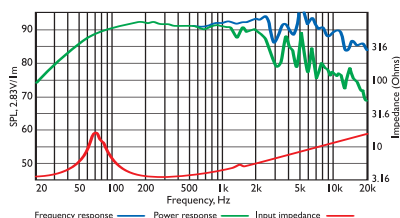
### Architectural specifications:

The Ci Series Ci160.2FS and Ci160.2FR comprise a 160mm full range speaker. Performance should meet or exceed the following criteria: frequency response 1 metre on-axis with swept sinewave shall be 60Hz to 16kHz, system sensitivity shall

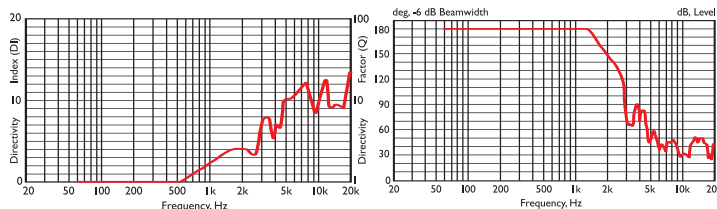
be at least 89dB for 2.83V@1m. The driver impedance and maximum power handling shall be 100W at 4 ohms. The Ci Series Ci160.2FS and Ci160.2FR is best suited where high quality music and speech reinforcement applications require hi-fi performance such as:

- Multi Room systems.
- Lounges, Bars, Boutiques.
- Boardrooms & Offices.
- Airports, Convention Centres, Hotels.
- Live Theatre/Concert Hall fill-in.
- Houses of Worship.

## Frequency / Power response, Input impedance



## Directivity Index / Beamwidth



## Specifications

Frequency range	60Hz - 16kHz
Sensitivity (2.83v @ 1m)	89dB
Rec. amplifier power	10 - 100W
Nominal Impedance	4Ω (min. 3.5Ω)
Crossover Frequency	N/A

Enclosure material	N/A
Terminals	spring terminals up to Ø2.5mm (0.1") conductor
Dimensions (H x W x D)	220 x 220 x 89 mm, 8.7 x 8.7 x 3.5 in.
Net weight	1.3kg (2.8lbs)



KEF UNI-Q® LOUDSPEAKERS

# Ci200.2QS/QR

Information Sheet



These are the Ci200.2QS and Ci200.2QR, generous in size and outstanding in performance. Audiophile quality sound is derived from KEF's Uni-Q® driver array technology, providing your room with an expansive soundscape, excellent bass extension and so creating the perfect sound stage.

Deciding whether to place the Ci200.2QS and Ci200.2QR in the walls or ceiling has

never been more simple. Thanks to KEF's simple and ingenious screw down clamping system you'll find them easy and quick to install.

Designed with moisture-resistant fixings allowing placement in the harshest environments such as bathrooms or even outside (under eaves).

The Ci200.2QS and Ci200.2QR offer excellent quality with no sacrifice.

## Features and Benefits:

The 2-way Ci200.2QS and Ci200.2QR combine 100W power handling and 89dB sensitivity, for a maximum output of 108dB. A 200mm (8") polypropylene cone bass/mid unit with a coincident mounted 25mm (1") soft dome, ferrofluid cooled high-frequency unit provide superb off-axis dispersion characteristics.

The bezel and grille can be painted or covered by fabric to match the interior décor.

**Ci series**  
custom installation speakers

**KEF®**

KEF Audio (UK), Eccleston Road, Tovil, Maidstone, Kent, ME15 6QP U.K. Telephone: + 44 (0) 1622 672261. Fax: + 44 (0) 1622 750653

KEF America, 10 Timber Lane, Marlboro, New Jersey, 07746 USA. Telephone: + 1 732 683 2356. Fax: + 1 732 683 2358

GP Acoustics GmbH, Heinrichstraße 51, D-44536 Lünen, Deutschland. Telephone: +49 (0) 231 9860-320. Fax: +49 (0) 231 9860-330.

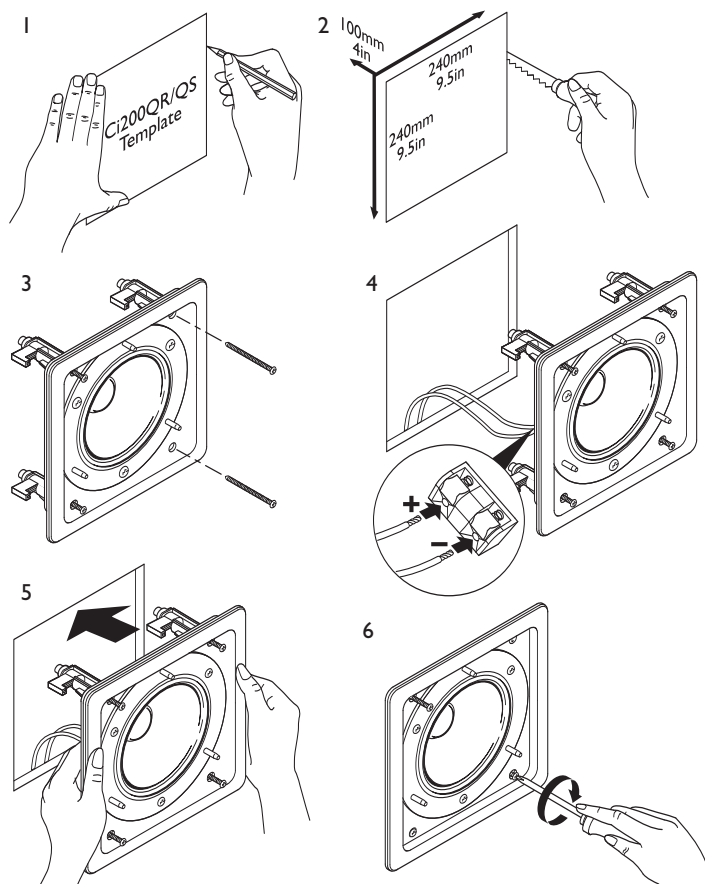
[www.kef.com](http://www.kef.com)

[www.kefamerica.com](http://www.kefamerica.com)

[www.kefaudio.de](http://www.kefaudio.de)

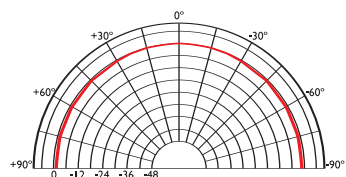
# Ci200.2QS/QR

## Installation

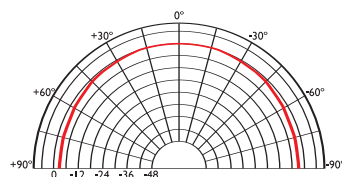


## Polar graphs

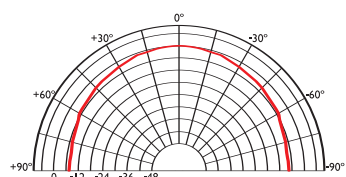
500Hz



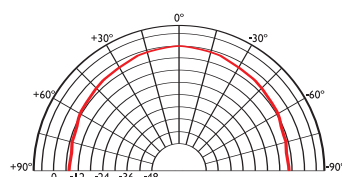
1kHz



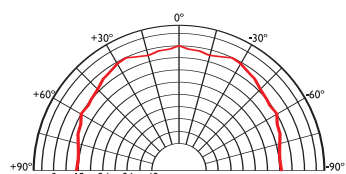
2kHz



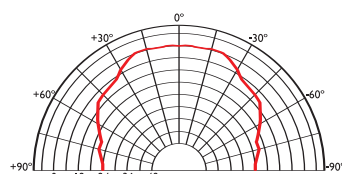
4kHz



8kHz



16kHz



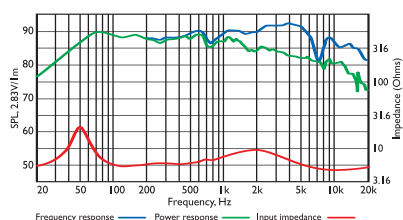
## Architectural specifications:

The Ci Series Ci200.2QS and Ci200.2QR comprise Uni-Q® coincident mounted 25mm soft dome ferrofluid cooled tweeter with 200mm white polypropylene bass/mid unit. Performance should meet or exceed the following criteria: frequency response 1 metre on-axis with swept

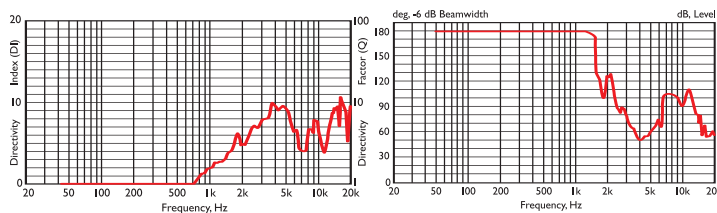
sinewave shall be 43Hz to 20 kHz, sensitivity shall be at least 89dB for 2.83V@1m. The impedance and maximum power shall be 100W at 8 ohms. The Ci Series Ci200.2QS and Ci200.2QR is best suited where high quality music and speech reinforcement applications require hi-fi performance such as:

- Multi Room systems.
- Home Theatre systems.
- Lounges, Bars, Boutiques.
- Boardrooms & Offices.
- Airports, Convention Centres, Hotels.
- Live Theatre/Concert Hall fill-in.
- Houses of Worship.
- Sports Arenas.

## Frequency / Power response, Input impedance



## Directivity Index / Beamwidth



## Specifications

Frequency range	43Hz - 20kHz
Sensitivity (2.83v @ 1m)	89dB
Rec. amplifier power	10 -100W
Nominal Impedance	8Ω (min. 4.8Ω)
Crossover Frequency	2.7kHz

Enclosure material	N/A
Terminals	spring terminals up to Ø2.5mm (0.1") conductor
Dimensions (H x W x D)	265 x 265 x 107 mm, 10.4 x 10.4 x 4.2 in.
Net weight	2.1kg (4.6lbs)



# Ci200.2QT

## Information Sheet



Sometimes custom installation needs something extra special and KEF's Ci200.2QT is just that. Easily configured for infrared remote control an integral DC motor allows you to position the speaker at the optimum angle with the press of a button. When fully retracted it can be operated as a conventional ceiling flush mounted speaker.

Providing the perfect sound stage is KEF's patented Uni-Q® driver array producing audiophile quality sound with an expansive soundscape and excellent bass extension. When partnering with others in the range such as the Ci130DS it is the perfect companion for creating a high performance built-in home theatre.

### Features and Benefits:

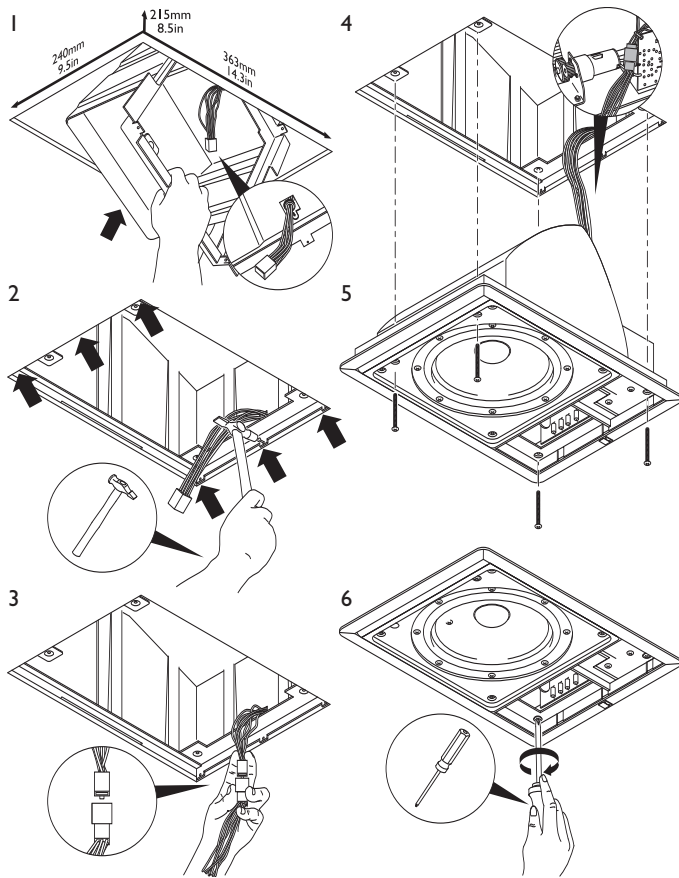
The 2-way Ci200.2QT combines 100W power handling and 88dB sensitivity, for a maximum output of 108dB. A 200mm (8") polypropylene cone bass/mid unit with a coincident mounted 25mm (1") soft dome, ferrofluid cooled high-frequency unit gives superb off-axis dispersion characteristics. Five pre-set tilt positions with music sensing mode provides a unique touch of sophistication for the discerning client. The bezel and grill can be painted to match the interior décor.

**Ci series**  
custom installation speakers



# Ci200.2QT

## Installation



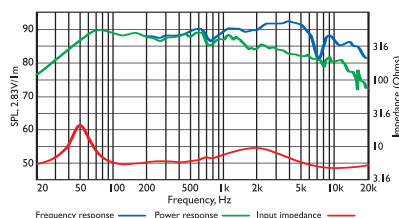
### Architectural specifications:

The Ci Series Ci200.2QT comprise a coincident mounted 25mm soft dome ferrofluid cooled tweeter with a 200mm polypropylene cone bass/mid unit. Performance should meet or exceed the following criteria: frequency response 1 metre on-axis with swept sinewave

shall be 43Hz to 20 kHz, sensitivity shall be at least 88dB for 2.83V@1m. The impedance and maximum power shall be 100W at 8 ohms. The Ci Series Ci200.2QT is best suited where high quality music and speech reinforcement applications require hi-fi performance such as:

- Multi Room systems.
- Home Theatre systems.
- Lounges, Bars, Boutiques.
- Boardrooms & Offices.
- Airports, Convention Centres, Hotels.
- Live Theatre/Concert Hall fill-in.
- Houses of Worship.
- Sports Arenas.

## Frequency / Power response, Input impedance

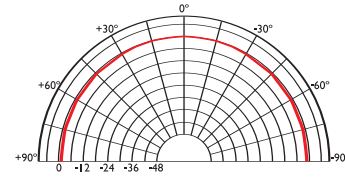


## Specifications

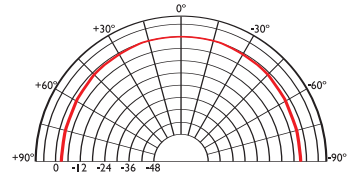
Frequency range	43Hz - 20kHz
Sensitivity (2.83v @ 1m)	88dB
Rec. amplifier power	10 - 100W
Nominal Impedance	8Ω (min. 4.8Ω)
Crossover Frequency	2.5kHz

## Polar graphs

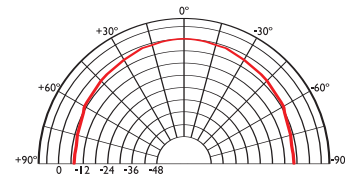
500Hz



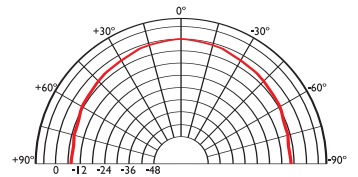
1kHz



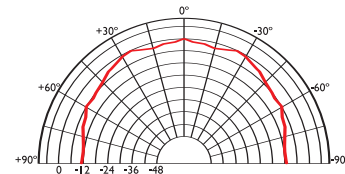
2kHz



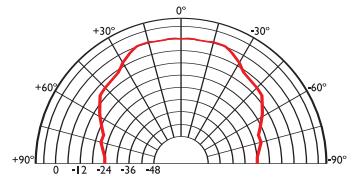
4kHz



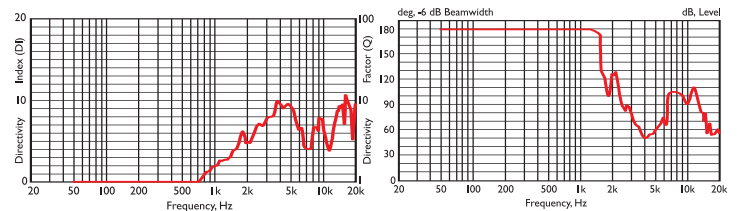
8kHz



16kHz



## Directivity Index / Beamwidth



Enclosure material	N/A
Terminals	terminal blocks up to Ø2.5mm (0.1") conductor
Dimensions (H x W x D)	381 x 279 x 215 mm, 15 x 11 x 8.5 in.
Net weight	5.52kg (12.1lbs)



# Ci400/400T

## Information Sheet



KEF has taken a new style direction in custom installation with the Ci400 and the Ci400T.

Developed from the proven multi-award winning KHT2005, the innovative and stylish cast aluminium loudspeakers offer many advantages and benefits to the professional installer.

Using high-grade crossover components in conjunction with the Uni-Q® array contributes to hi-fi sound quality across the full frequency range, making the product ideal for both foreground and background music.

Choose the Ci400 with its adjustable ball joint and you have flexibility in positioning. Use it on its own base, mounted horizontally or vertically on walls, on ceilings or, using the heavy duty mounting bracket, attached to poles.

Decide on the Ci400T and you have the additional transformer mounted within the base, providing an option for use with 70/100v line systems.

Commercial installations requiring hi-fi performance will benefit from these stylish speakers.

### Features and Benefits:

The 2-way Ci400 combines 50W power handling and 88dB sensitivity, for a maximum output of 104dB.

A stylish cast aluminium reflex ported enclosure with 100mm (4") polypropylene bass/mid cone and coincident mounted, twin neodymium magnet, 19mm (¾") aluminium dome, high-frequency unit.

A choice of silver, soft black or pearl white finishes to suit architectural requirements.

**Ci series**  
custom installation speakers

**KEF®**

KEF Audio (UK), Eccleston Road, Tovil, Maidstone, Kent, ME15 6QP U.K. Telephone: + 44 (0) 1622 672261. Fax: + 44 (0) 1622 750653

KEF America, 10 Timber Lane, Marlboro, New Jersey, 07746 USA. Telephone: + 1 732 683 2356. Fax: + 1 732 683 2358

GP Acoustics GmbH, Heinrichstraße 51, D-44536 Lünen, Deutschland. Telephone: +49 (0) 231 9860-320. Fax: +49 (0) 231 9860-330.

[www.kef.com](http://www.kef.com)

[www.kefamerica.com](http://www.kefamerica.com)

[www.kefaudio.de](http://www.kefaudio.de)

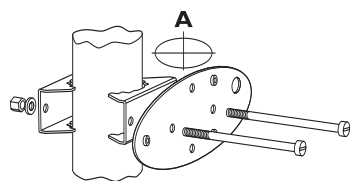
# Ci400/400T

## Installation

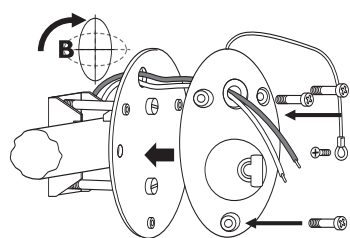
(Tube Mount)

(Wall Mount)

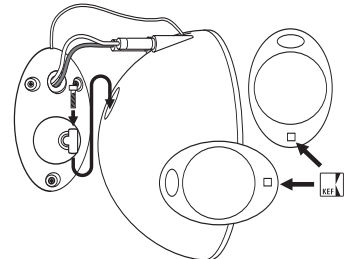
1 Ci400 / Ci400T



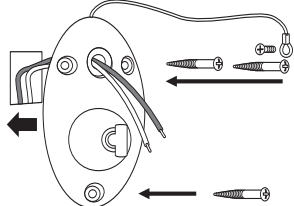
2 Ci400 / Ci400T



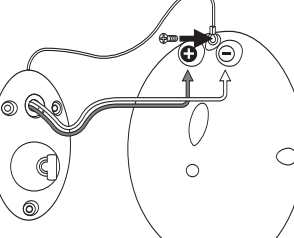
5 Ci400 / Ci400T



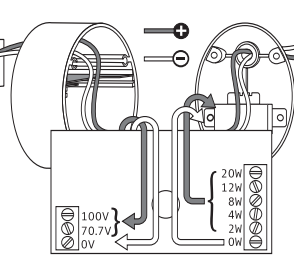
1 Ci400 / Ci400T



2 Ci400 / Ci400T

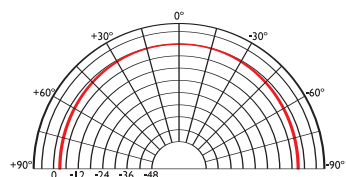


6 Ci400T

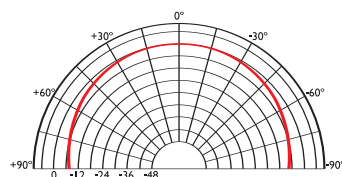


## Polar graphs

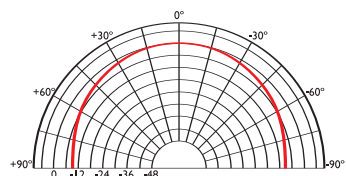
500Hz



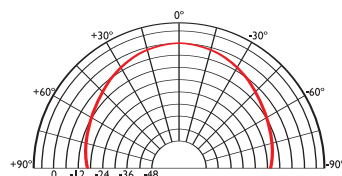
1kHz



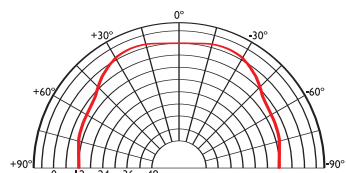
2kHz



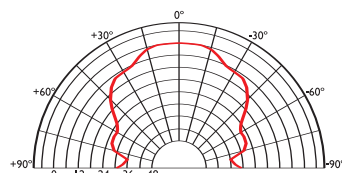
4kHz



8kHz



16kHz



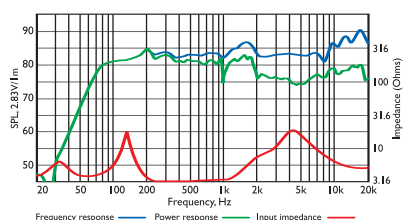
## Architectural specifications:

The Ci Series Ci400 and Ci400T comprise a 19mm aluminium dome tweeter and 100mm white polypropylene bass/mid unit with double neo compound magnet system. Performance should meet or exceed the following criteria: frequency response 1 metre on-axis with swept

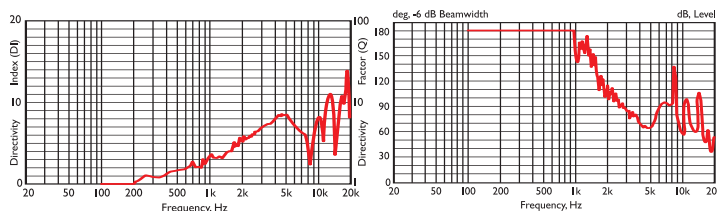
sinewave shall be 80Hz to 27 kHz, sensitivity shall be at least 88dB for 2.83V@1m. The impedance and maximum power shall be 50W at 4 ohms. The Ci Series Ci400 and Ci400T is best suited where high quality music and speech reinforcement applications require hi-fi performance such as:

- Multi Room systems.
- Home Theatre systems.
- Lounges, Bars, Boutiques.
- Boardrooms & Offices.
- Airports, Convention Centres, Hotels.
- Live Theatre/Concert Hall fill-in.
- Houses of Worship.
- Sports Arenas.

## Frequency / Power response, Input impedance



## Directivity Index / Beamwidth



## Specifications

Frequency range	80Hz - 27kHz
Sensitivity (2.83v @ 1m, 2π)	88dB
Rec. amplifier power	10 - 50W
Nominal Impedance	4Ω (min. 3.2Ω)
Crossover Frequency	2.8kHz

Enclosure material	aluminium alloy
Terminals	binding posts up to Ø5mm (0.2") conductor
Dimensions (H x W x D)	198 x 130 x 150 mm, 7.8 x 5.2 x 6 in.
Net weight	2.0kg (4.4lbs)



# Ci500AW

## Information Sheet



For a serious all-weather loudspeaker look to KEF's Ci Series Ci500AW.

In the summerhouse or by the pool, this is a complete all-rounder, featuring an ABR box design with an integral, swivelling mounting bracket.

Along with the drivers, both the terminals and mounting bracket are weather-resistant,

making positioning of this loudspeaker, even in the harshest environments like patios or even ocean-going yachts, extremely versatile.

Imagine KEF acoustic quality in outdoor sound and think of the Ci500AW delivering a solid, richly detailed sound virtually anywhere you care to place it.

### Features and Benefits:

The 2-way Ci500AW combines 70W power handling and 87dB sensitivity for a maximum output of 105dB.

A 130mm (5¼") polypropylene bass/mid driver working in conjunction with an Auxiliary Bass Radiator (ABR) for increased low frequency output, is partnered by a 25mm (1") soft dome tweeter.

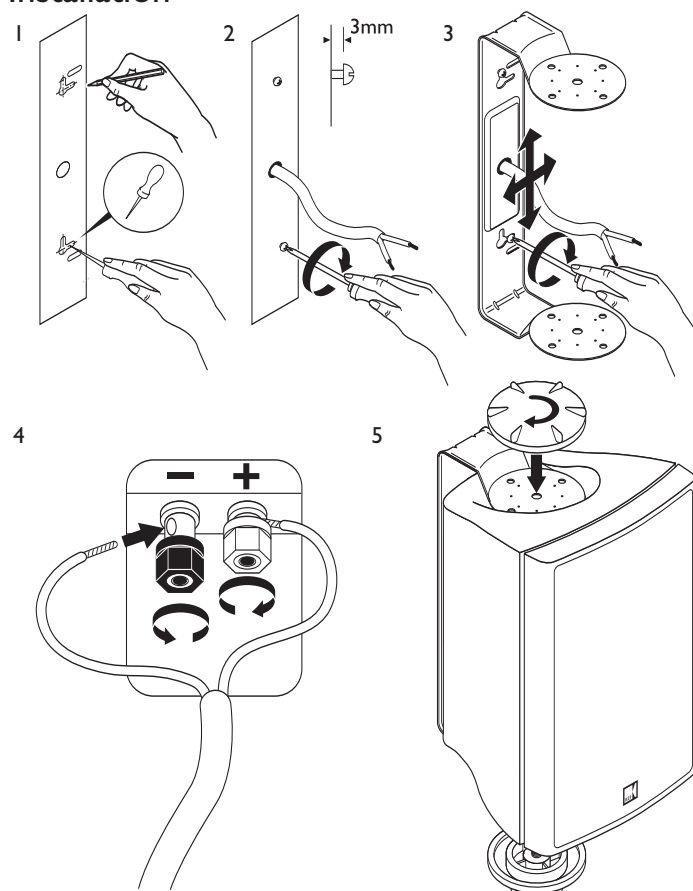
The white, moulded ABS enclosure and stainless steel grille are easily paintable.

**Ci series**  
custom installation speakers



# Ci500AW

## Installation



### Architectural specifications:

The Ci Series Ci500AW comprise a 25mm soft dome ferrofluid cooled tweeter with 130mm polypropylene bass/mid unit and Auxiliary Bass Radiator. Performance should meet or exceed the following criteria: frequency response 1 metre on-axis with swept sinewave shall

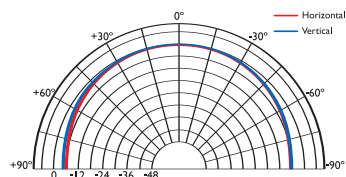
be 60Hz to 20 kHz, sensitivity shall be at least 87dB for 2.83V@1m.

The impedance and maximum power shall be 70W at 4 ohms. The Ci Series Ci500AW is best suited where high quality music and speech reinforcement applications require hi-fi performance in all weather such as:

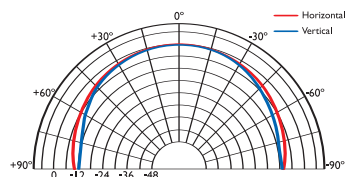
- Patios.
- Maritime and Sailing.
- Zoos.
- Theme Parks.
- Sports Arenas.

## Polar graphs

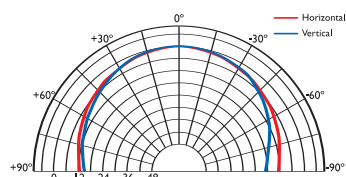
500Hz



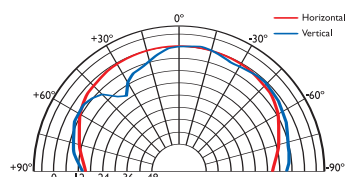
1kHz



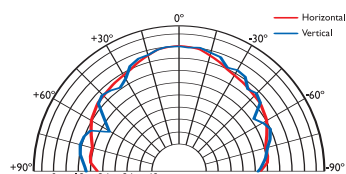
2kHz



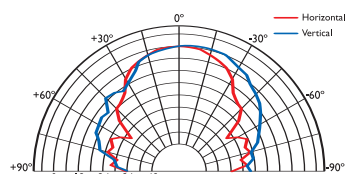
4kHz



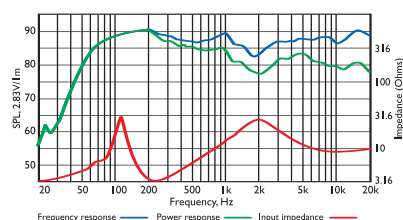
8kHz



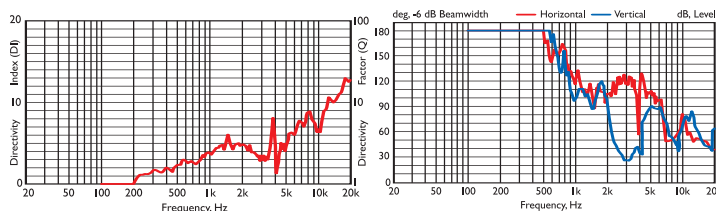
16kHz



## Frequency / Power response, Input impedance



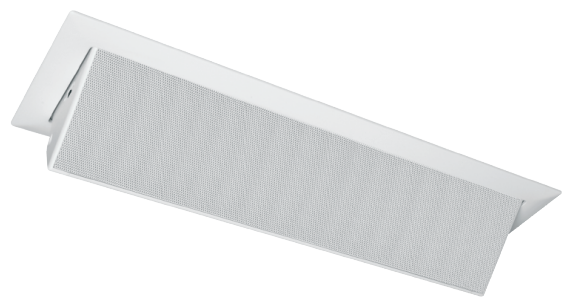
## Directivity Index / Beamwidth



## Specifications

Frequency range	60Hz - 20kHz
Sensitivity (2.83v @ 1m)	87dB
Rec. amplifier power	10 - 70W
Nominal Impedance	4Ω (min. 3.2Ω)
Crossover Frequency	3kHz

Enclosure material	Polycarbonate
Terminals	binding posts up to Ø5mm (0.2") conductor
Dimensions (H x W x D)	290 x 180 x 173 mm, 11.5 x 7.1 x 6.9 in.
Net weight	3.5kg (7.7lbs)



# Ci3-80QT

## Information Sheet



The most elegant design solution to the perennial problem of where to place the all-important front speakers in a high-end home theatre installation, the motorised Ci3-80QT purrs down into position from the ceiling. With a 75mm (3") Uni-Q® array flanked by a pair of long-throw bass drivers of the same size, it combines

Uni-Q's exceptionally wide dispersion characteristics with fluent and accurate response right across the frequency range.

Whispered or shouted, on-screen dialogue and vocals become transparently clear, subtly nuanced and as perfectly located as the speakers themselves.

### Features and Benefits:

Purpose built for flush mounting into ceilings the Ci3-80QT is the latest addition to the KEF Uni-Q Custom Installation series. The 3-way, Ci3-80QT combines 100W power handling and 87dB sensitivity and consists of a polypropylene cone LF driver with the HF unit mounted between two matched size LF units.

Will require an additional 12 volt supply. The bezel and grill can be painted to match the interior décor.

**Ci series**  
custom installation speakers

**KEF®**

KEF Audio (UK), Eccleston Road, Tovil, Maidstone, Kent, ME15 6QP U.K. Telephone: + 44 (0) 1622 672261. Fax: + 44 (0) 1622 750653

KEF America, 10 Timber Lane, Marlboro, New Jersey, 07746 USA. Telephone: + 1 732 683 2356. Fax: + 1 732 683 2358

GP Acoustics GmbH, Heinrichstraße 51, D-44536 Lünen, Deutschland. Telephone: +49 (0) 231 9860-320. Fax: +49 (0) 231 9860-330.

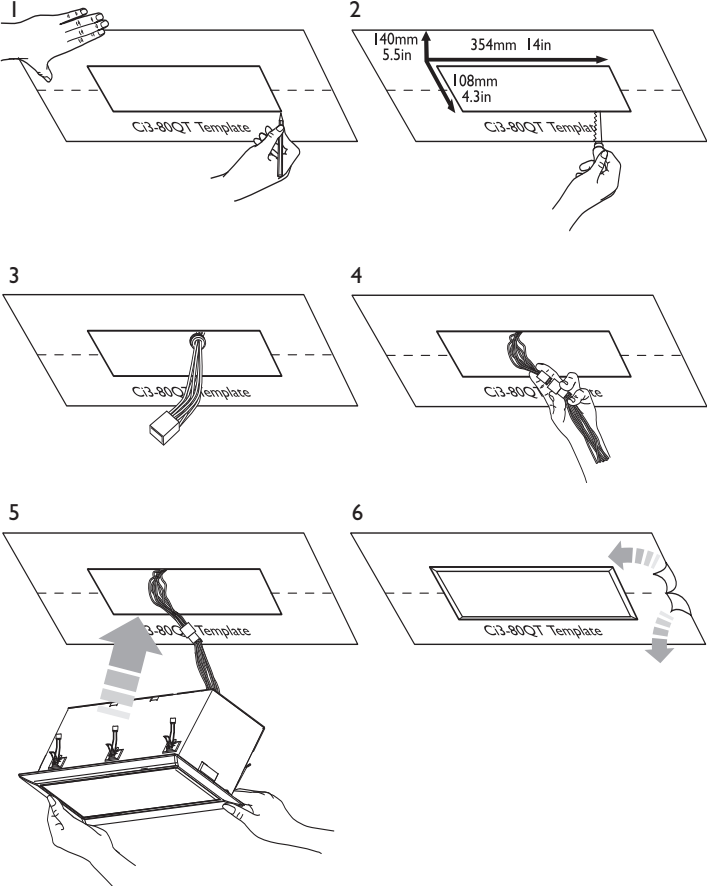
[www.kef.com](http://www.kef.com)

[www.kefamerica.com](http://www.kefamerica.com)

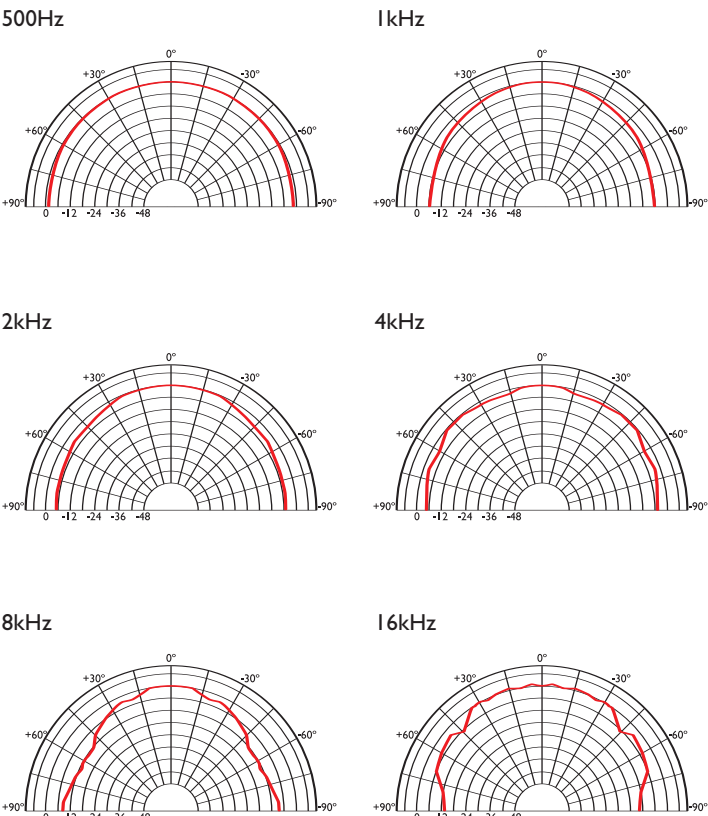
[www.kefaudio.de](http://www.kefaudio.de)

# Ci3-80QT

## Installation



## Polar graphs



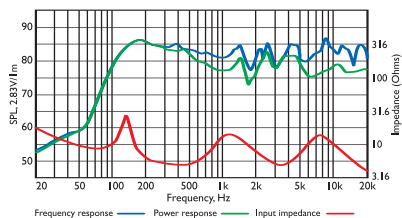
## Architectural specifications:

The Ci3-80QT comprises a Uni-Q® array with a coincident mounted, twin neodymium magnet, 15mm (5/8") aluminium dome, high-frequency unit, a 75mm polypropylene midrange unit and two 75mm bass drivers. Performance should meet or exceed the following criteria:

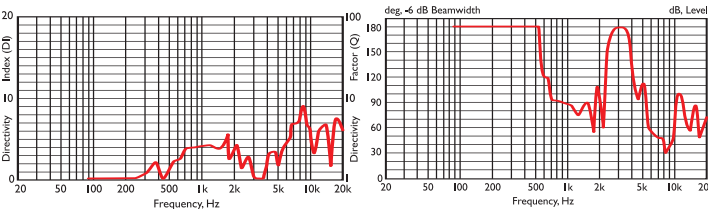
frequency response 1 metre on-axis with swept sinewave shall be 87Hz to 27kHz, sensitivity shall be at least 87dB for 2.83V@1m. The impedance and maximum power shall be 100W at 8 ohms. The Ci3-80QT is best suited for high quality music and home theatre applications where hi-fi performance is required, such as:

- Multi Room systems.
- Home Theatre systems.
- Boardrooms & Offices.
- Hotels.

## Frequency / Power response, Input impedance



## Directivity Index / Beamwidth



## Specifications

Frequency range	87Hz - 27kHz
Sensitivity (2.83v @ 1m)	87dB
Rec. amplifier power	10 - 100W
Nominal Impedance	8Ω (min. 3.2Ω)
Crossover Frequency	300Hz - 3kHz

Enclosure material	Steel
Terminals	terminal blocks up to Ø2.5 mm (0.1") conductor
Dimensions (H x W x D)	377 x 127 x 122 mm, 14.8 x 5 x 4.8 in.
Net weight	3.14kg (6.9lbs)



# CiFDT

## Information Sheet



A motorised dipole surround sound speaker, the CiFDT combines genuinely unobtrusive installation with the ability to create stunningly realistic background effects. Lying flush with the wall when not in use, a sophisticated flat panel driver moves into position when switched on, radiating higher frequencies equally front and back to diffuse the sound evenly throughout the room, while low frequency

effects are being faithfully reproduced by the integral 130mm (5") bass driver. Acoustically, the two technologies complement each other perfectly to generate a richly detailed ambient soundfield; aesthetically, the appearance couldn't be more discreet. As an architectural audio solution, it's imaginative, impeccably engineered and incredibly satisfying.

### Features and Benefits:

Purpose built for flush mounting into walls, the CiFDT combines 100W power handling and 86dB sensitivity. A 110mm x 180mm (4 1/8" x 7") Flat panel with a 130mm (5") bass driver.

Will require an additional 12 volt supply. The bezel and grille can be painted or covered by fabric to match the interior décor.

**Ci series**  
custom installation speakers

**KEF**®

KEF Audio (UK), Eccleston Road, Tovil, Maidstone, Kent, ME15 6QP U.K. Telephone: + 44 (0) 1622 672261. Fax: + 44 (0) 1622 750653

[www.kef.com](http://www.kef.com)

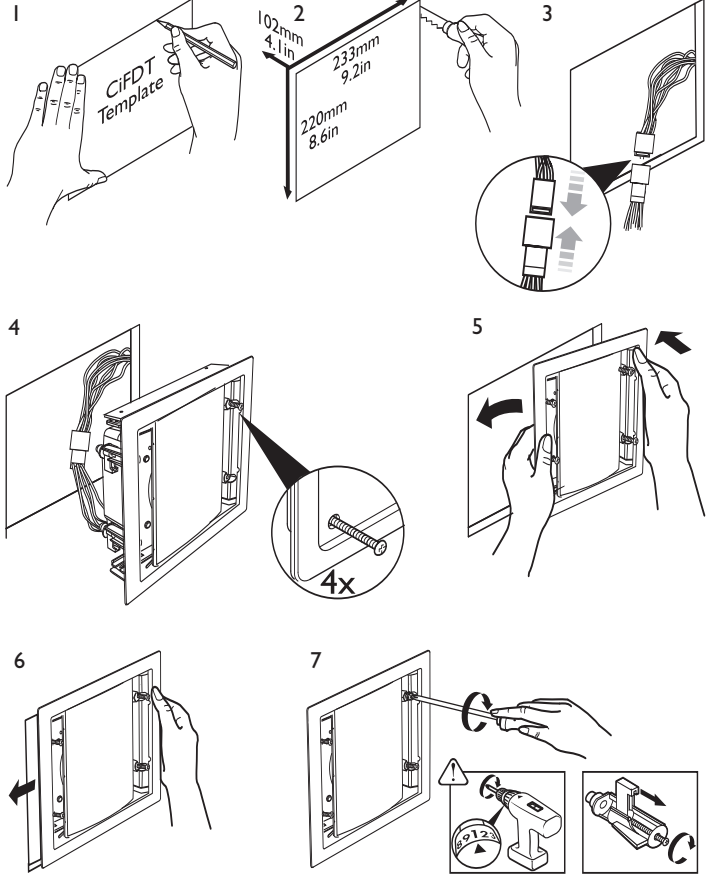
KEF America, 10 Timber Lane, Marlboro, New Jersey, 07746 USA. Telephone: + 1 732 683 2356. Fax: + 1 732 683 2358

[www.kefamerica.com](http://www.kefamerica.com)

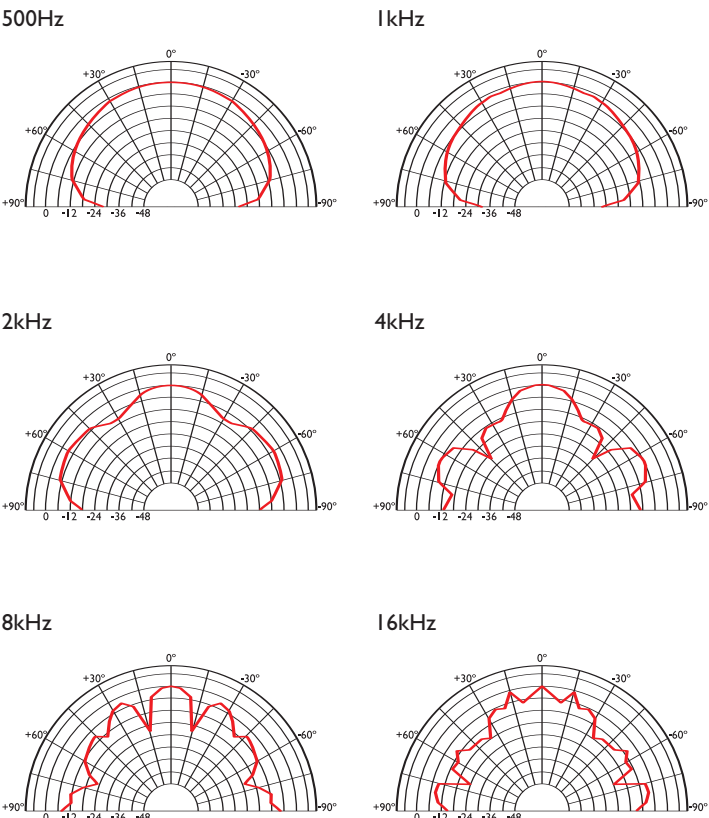
GP Acoustics GmbH, Heinrichstraße 51, D-44536 Lünen, Deutschland. Telephone: +49 (0) 231 9860-320. Fax: +49 (0) 231 9860-330.

[www.kefaudio.de](http://www.kefaudio.de)

## Installation



## Polar graphs



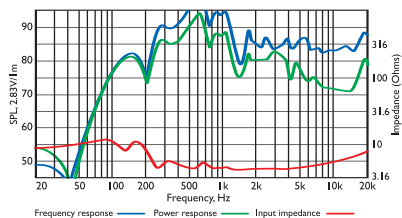
## Architectural specifications:

The CiFDT comprises a 110mm x 180mm (4 1/8" x 7") Flat panel with a 130mm (5") bass driver. Performance should meet or exceed the following criteria: frequency response 1 metre on-axis with swept sinewave shall be 80Hz to 20kHz, sensitivity

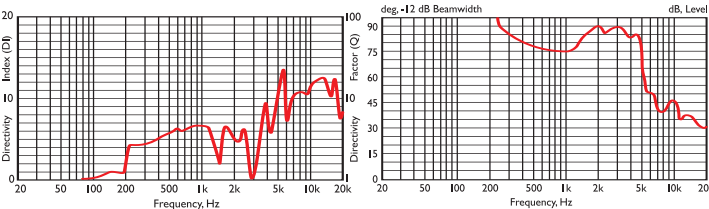
shall be at least 86dB for 2.83V@1m. The impedance and maximum power shall be 100W at 8 ohms. The CiFDT is best suited for high quality music and home theatre applications where hi-fi performance is required, such as:

- Multi Room systems.
- Home Theatre systems.

## Frequency / Power response, Input impedance



## Directivity Index / Beamwidth



## Specifications

Frequency range	80Hz - 20kHz
Sensitivity (2.83v @ 1m)	86dB
Rec. amplifier power	20 - 100W
Nominal Impedance	8Ω (min. 3.2Ω)
Crossover Frequency	180Hz

Enclosure material	Steel
Terminals	terminal blocks up to Ø2.5 mm (0.1") conductor
Dimensions (H x W x D)	248 x 248 x 103 mm, 9.75 x 9.75 x 4 in.
Net weight	1.5kg (3.3lbs)



## KEF UNI-Q® LOUDSPEAKERS

# Ci 9000ACE

## Information Sheet



The in-wall Ci Series 9000ACE from KEF is a innovative new advance into custom installed loudspeakers. The 165mm (6½") Uni-Q® driver array brings out the full emotional depth and texture of vocals, whether sung, shouted, spoken or whispered - hardly surprising, since it's exactly the same unit as you'll find on the XQ series. On either side, a matching pair of long throw bass drivers with ultra-low distortion motors for low frequency response that's as lucid as it is gutsy - and thanks to KEF's Acoustic Compliance

Enhancement technology, (ACE) what you actually hear is a level of bass extension that's normally only obtainable with much larger speakers.

Ci Series 9000ACE comes with two grille options: The pictured black cloth covered grille and a white overhanging grille. Also included is a plain grille frame, if a fabric or covering of personal choice is required.

The new Ci Series 9000ACE.  
More range, more depth. More alive.

### Features and Benefits:

Purpose built for flush mounting into walls, the 3-way, Ci9000ACE combines 150W power handling and 88dB sensitivity. A 165mm (6½") polypropylene cone midrange unit with a coincident mounted, twin neodymium magnet, 19mm (¾") aluminium dome, high-frequency unit and two 165mm (6½") bass drivers in a sealed back-box.

HF output can be increased through alternative terminal connection to compensate for grille coverings.

**Ci series**  
custom installation speakers

**ace**  
acoustic compliance enhancement

**KEF®**

KEF Audio (UK), Eccleston Road, Tovil, Maidstone, Kent, ME15 6QP U.K. Telephone: + 44 (0) 1622 672261. Fax: + 44 (0) 1622 750653

KEF America, 10 Timber Lane, Marlboro, New Jersey, 07746 USA. Telephone: + 1 732 683 2356. Fax: + 1 732 683 2358

GP Acoustics GmbH, Heinrichstraße 51, D-44536 Lünen, Deutschland. Telephone: +49 (0) 231 9860-320. Fax: +49 (0) 231 9860-330.

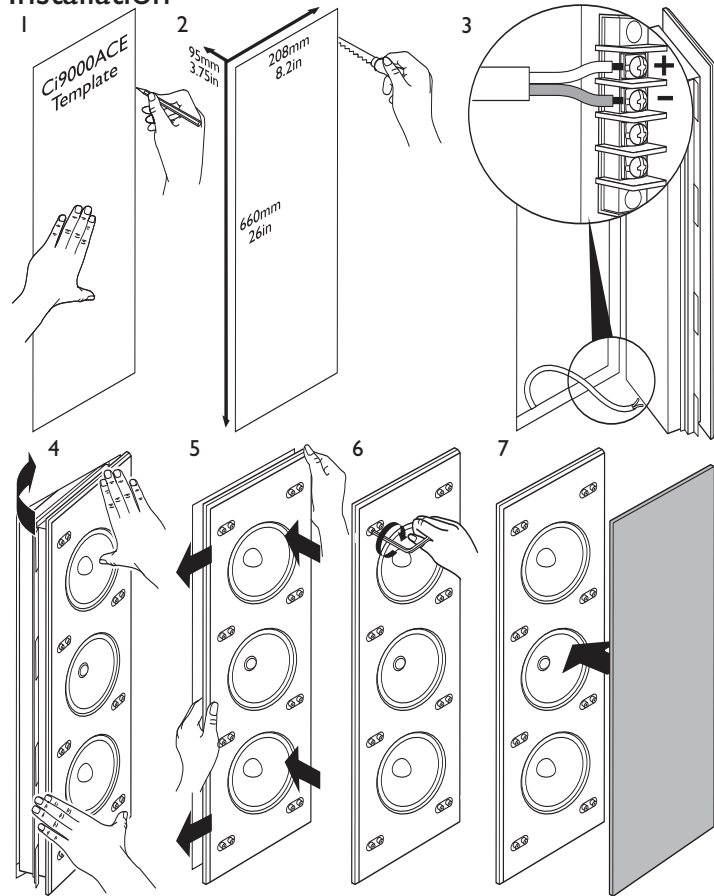
[www.kef.com](http://www.kef.com)

[www.kefamerica.com](http://www.kefamerica.com)

[www.kefaudio.de](http://www.kefaudio.de)

# Ci9000ACE

## Installation



## Architectural specifications:

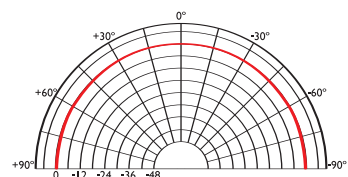
The Ci9000ACE comprises a Uni-Q® array with a coincident mounted, twin neodymium magnet, 19mm (¾") aluminium dome, high-frequency unit, a 165mm polypropylene midrange unit and two 165mm bass drivers. Performance should meet or exceed the following criteria:

frequency response 1 metre on-axis with swept sinewave shall be 60Hz to 27kHz, sensitivity shall be at least 88dB for 2.83V@1m. The impedance and maximum power shall be 150W at 8 ohms. The Ci9000ACE is best suited for high quality music and home theatre applications where hi-fi performance is required, such as:

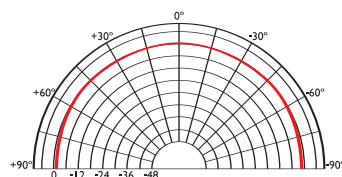
- Multi Room systems.
- Home Theatre systems.
- Lounges, Bars, Boutiques.
- Boardrooms & Offices.

## Polar graphs

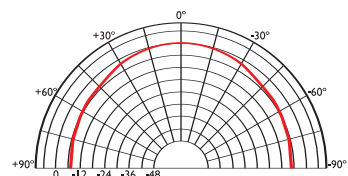
500Hz



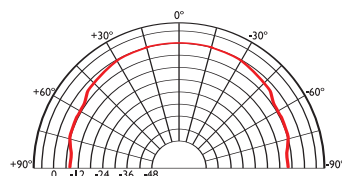
1kHz



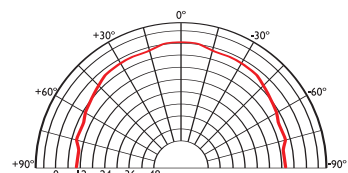
2kHz



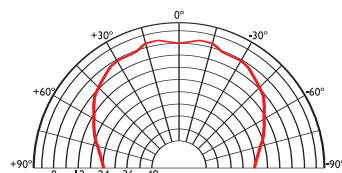
4kHz



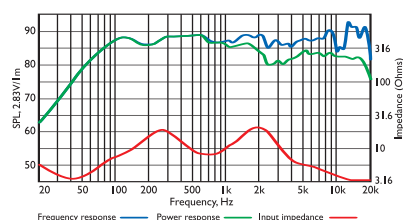
8kHz



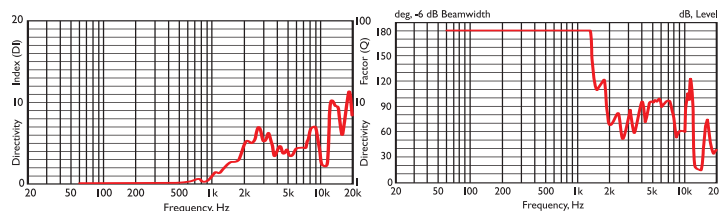
16kHz



## Frequency / Power response, Input impedance



## Directivity Index / Beamwidth



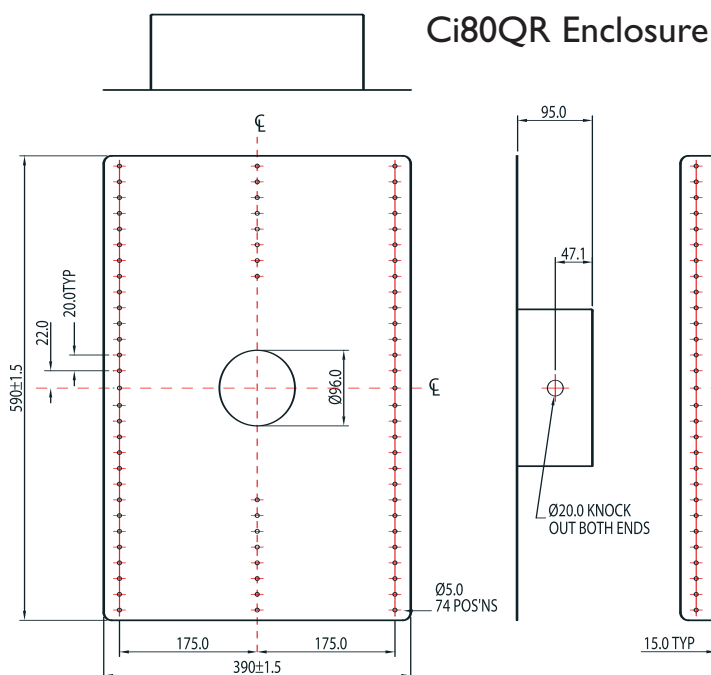
## Specifications

Frequency range	60Hz - 27kHz
Sensitivity (2.83v @ 1m)	88dB
Rec. amplifier power	30 - 150W
Nominal Impedance	8Ω (min. 3.2Ω)
Crossover Frequency	350Hz, 3kHz

Enclosure material	Steel
Terminals	screw type
Dimensions (H x W x D)	680 x 230 x 106 mm, 26.75 x 9 x 4.2 in.
Net weight	12.5kg (27.5lbs)

# Ci Rear Enclosures

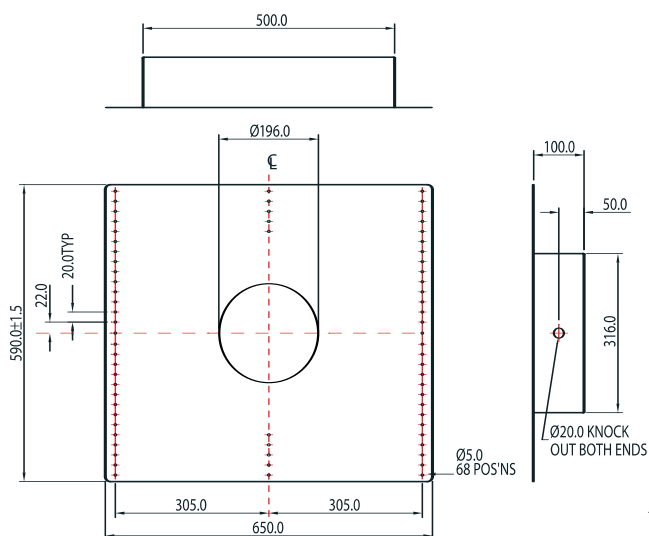
## Information Sheet



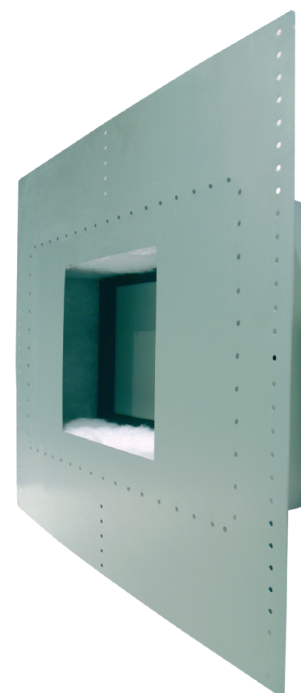
**Ci100QR Enclosure**



**Ci160.2QR Enclosure**



**Ci200.2QS Enclosure**



The new range of purpose built and acoustically optimised rear enclosures are designed to provide consistent output from any KEF Ci Series loudspeakers wherever they are situated within the installation. Each has been specially created to complement the output

capabilities of the Ci Series in-wall/ceiling range, whether round or square. Easy to install at the first fix stage of room construction with variable mounting plate dimensions and fixings to suit any bespoke or standard joist beam configurations.

“Rough-in” frames are also available to speed up the installation of KEF Ci Series products into any single or multi-room system.

The new range of rear enclosures and rough-in frames, designed to make custom installations easier and acoustically perfect.

**Ci series**  
custom installation speakers



KEF Audio (UK), Eccleston Road, Tovil, Maidstone, Kent, ME15 6QP U.K. Telephone: + 44 (0) 1622 672261. Fax: + 44 (0) 1622 750653

[www.kef.com](http://www.kef.com)

KEF America, 10 Timber Lane, Marlboro, New Jersey, 07746 USA. Telephone: + 1 732 683 2356. Fax: + 1 732 683 2358

[www.kefamerica.com](http://www.kefamerica.com)

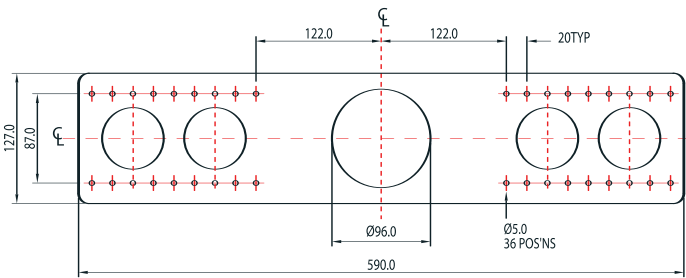
GP Acoustics GmbH, Heinrichstraße 51, D-44536 Lünen, Deutschland. Telephone: +49 (0) 231 9860-320. Fax: +49 (0) 231 9860-330.

[www.kefaudio.de](http://www.kefaudio.de)

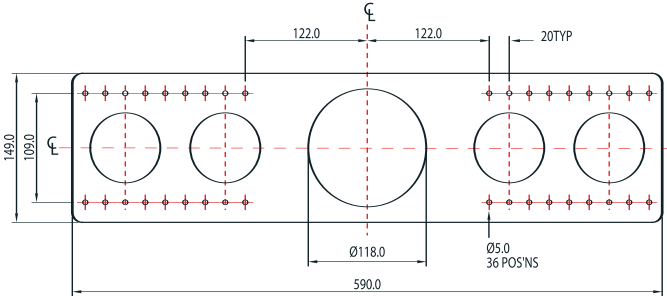
# Ci Rough-In Frames

## Information Sheet

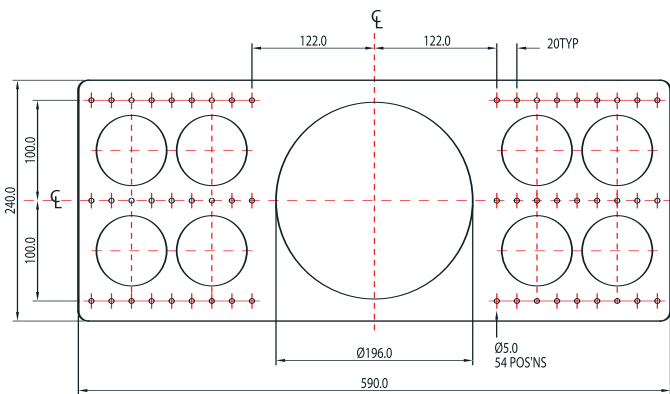
Ci80QR Rough-In frame



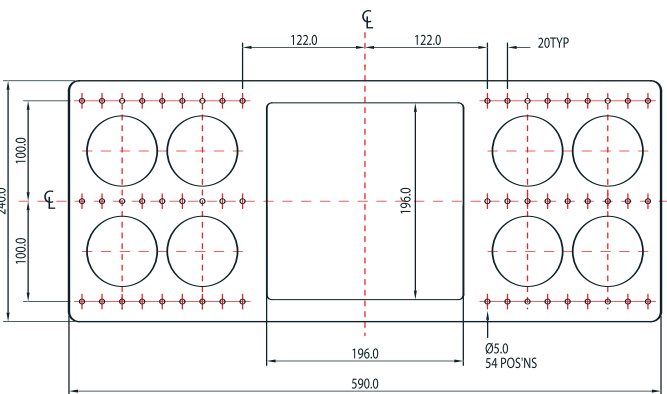
Ci100QR Rough-In frame



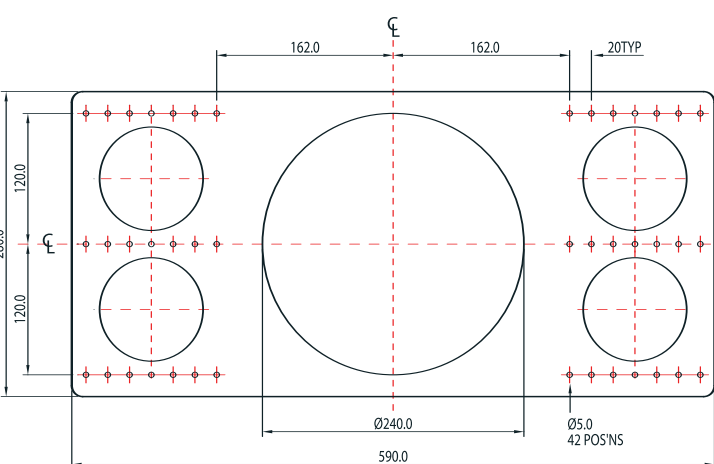
Ci160.2FR Rough-In frame



Ci160.2FS Rough-In frame



Ci200.2QR Rough-In frame



Ci200.2QS Rough-In frame

