



Animal Pals

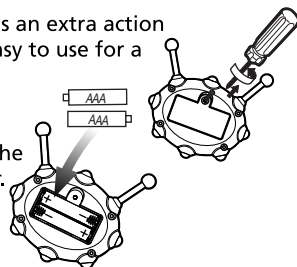
User Manual

INTRODUCTION

Animal Pals has a unique "spin n' go" action plus an extra action for each animal. The two button controller is easy to use for a preschooler.

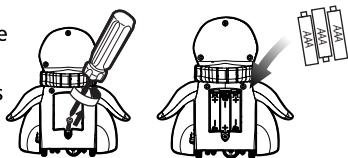
CONTROLLER

- Unscrew the battery cover on the backside of the handheld controller with a Philips screw driver.
- Insert 2 "AAA" batteries with polarities as shown inside battery compartment.
- Replace battery cover and screw shut.



ANIMAL PAL

- Unscrew the battery cover on the backside of the animal with a Philips screwdriver.
- Insert 3 "AAA" batteries with polarities as shown inside battery compartment.
- Replace battery cover and screw shut.



OPERATION

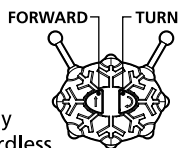
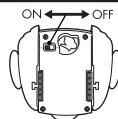
- Turn **Animal Pal** over and slide the switch to the "on" position.

- Press the left button on the controller, the animal will move forward while each animal does the following:

- * **Penguin** opens and closes its mouth while wings flap up and down.
- * **Panda** opens and closes its mouth while arms flap up and down.

- If your **Animal Pal** loses power, it may experience loss of function and performance. If this happens, simply replace batteries in animal and controller.

- Your animal operates by radio waves. It is possible that it may not perform properly due to interference from devices as cordless phones, hair dryer, radio, walkie talkie or other radio controlled toys.



SAFETY PRECAUTIONS

- Please read safety precautions thoroughly before operating this toy.
- Always select a safe place to play. Never operate your Animal Pal on popular streets or in water areas.
- Keep finger, hair and loose clothing away from tires, wheel hubs and motors while the toy is switched on.
- Batteries must be inserted with the correct polarities as shown in the battery compartment.
- Exhausted batteries should be removed from the toy and disposed of properly.
- Batteries should be replaced by an adult.
- Please keep these instructions for future reference.

FCC NOTICE

Warning: Changes or modifications to this unit not expressly approved by the party responsible for compliance could void the user authority to operate the equipment.

NOTE: This equipment has been tested and found to comply with the limits for a Class B digital device, pursuant to Part 15 of the FCC Rules. These limits are designed to provide reasonable protection against harmful interference in a residential installation. This equipment generates, uses and can radiate radio frequency energy and, if not installed and used in accordance with the instructions, may cause harmful interference to radio communications.

However, there is no guarantee that interference will not occur in a particular installation. If this equipment does cause harmful interference to radio or television reception, which can be determined by turning the equipment off and on, the user is encouraged to try to correct the interference by one or more of the following measures:

- Reorient or relocate the receiving antenna.
- Increase the separation between the equipment and receiver.
- Connect the equipment into an outlet on a circuit different from that to which the receiver is connected.
- Consult the dealer or an experienced radio/TV technician for help.

CAUTION!

- Do not mix old and new batteries.
- Do not mix alkaline, standard (Carbon-Zinc), or rechargeable (Nickel-Cd) batteries.
- Battery insertion must be done by an adult.
- Do not short circuit battery contacts.
- Do dispose of batteries safely and correctly.
- Do not attempt to burn batteries. Remove exhausted batteries.
- Remove batteries if the product will not be used for a long period of time.

NOTE: Changes or modifications to this unit not expressly approved by the party responsible for compliance could void the user's authority to operate the equipment.

Toll Free Hot Line: 800-816-1135

www.kidgalaxy.com

Kid Galaxy

WARNING:
CHOKING HAZARD - Small parts
Not for children under 3 years.

Copyright © 2009 Kid Galaxy, Inc.