



建 业 制 品 厂
建业实业（香港）有限公司

Model:	P-1203
Part Number	VYB-KYP1203
Product Name	iTrip for 3G Nano
Description:	FM Transmitter
Date:	12.12,2007

Operation FCC ID: VYB-P1203

iTrip for iPod nano User Guide

Thank you for buying Griffin Technology's iTrip® for iPod nano, the simple way to play your iPod on any FM radio.

Here's how to get started.

1. Connect iTrip to your iPod®.
2. Press Play.
3. Tune your FM radio to a clear frequency (see p. 3).
4. Use iTrip's ◀ and ▶ buttons to tune iTrip to the same frequency (see p. 4).
5. That's it. Enjoy.

1

Technical Specifications

- ▶ Built-in antenna
- ▶ Power: no batteries required, powered by your iPod
- ▶ Modulation: FM stereo
- ▶ Frequencies: 88.1 - 107.9 MHz
- ▶ Operation range: 10-30 ft (3m - 9.1m)

GRIFFIN



"Made for iPod" means that an electronic accessory has been designed to connect specifically to iPod and has been certified by the developer to meet Apple performance standards. Apple is not responsible for the operation of this device or its compliance with safety and regulatory standards.

This device complies with Part 15 of the FCC Rules. Operation is subject to the following two conditions: (1) this device may not cause harmful interference, and (2) this device must accept any interference received, including interference that may cause undesired operation. The manufacturer is not responsible for any radio or TV interference caused by unauthorized modifications to this equipment. Such modifications could void the user's authority to operate the equipment.



Warranty details at www.griffintech.com/support/

Griffin stands behind every product with the industry's best customer service, backed by a simple, fair warranty. Please read our warranty details at www.griffintech.com/support/ before using this Griffin product.

© 2008 Griffin Technology, Inc. • www.griffintech.com • iTrip is a registered trademark of Griffin Technology, Inc. • SmartSound is a trademark of Griffin Technology, Inc. • iPod is a trademark of Apple Inc., registered in the U.S. and other countries. • Patents pending
Made in China • Designed in Tennessee **Please recycle this package anywhere paper, #5 PP, and #3 PVC plastic are accepted. Thanks!**

Connect

Snap iTrip nano into the dock connector on your iPod.

Note: iTrip for iPod nano works with:

- ▶ iPod nano video (3rd generation)
- ▶ iPod classic
- ▶ iPod touch
- ▶ iPod nano (2nd generation)
- ▶ iPod video (5th generation)
- ▶ iPod with color display
- ▶ iPod photo (4th generation)
- ▶ iPod nano (1st generation)
- ▶ iPod mini

2



Play

1. On your FM radio, select a frequency on which you hear nothing but static. The ideal choice would have nothing on either of the neighboring frequencies, so listen for 3 in a row with static and select the middle frequency. (Example - you find that 106.7, 106.9 and 107.1 are unused frequencies. Select 106.9.)



3

Problem's not solved?

Call Griffin Technology's Customer Support at 800-208-5996.

Monday -Thursday 9 am – 6 pm and Friday, 9 am to 5 pm Central time.

Your call will be answered by real human beings who actually know and use Griffin products.

12

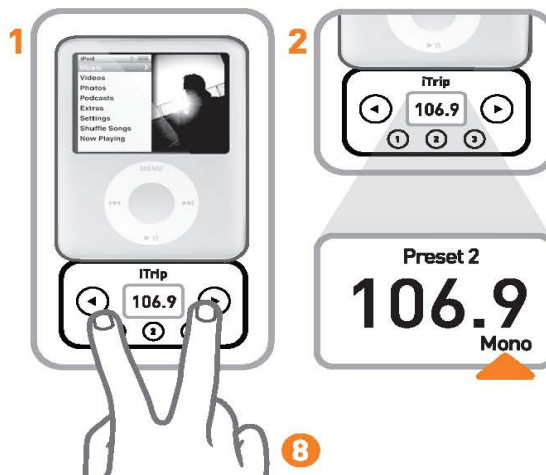
Listen

iTrip for iPod nano uses SmartSound™ to optimize the sound from your iPod to your FM radio.

Depending on what you're listening to, you can also switch between stereo and mono sound. Here's how:

1. Press both ◀ and ▶ buttons and hold for two seconds. Then release.
2. Mode will switch between mono and stereo.

7



8

MONO

results in a stronger signal than stereo.

- ▶ Use for podcasts, talk radio, audiobooks and similar tracks.
- ▶ Use in heavily populated areas where numerous FM stations crowd the dial.

STEREO

results in more realistic audio.

- ▶ Use for music and musical podcasts.
- ▶ Use for best possible Right/Left Channel stereo separation.

9

Setting and using the presets

1. Once you've found a useable frequency, press and hold any of the three preset buttons to save that frequency. (iTrip will exit this menu automatically after about 3 seconds.)
2. To change frequencies, press a preset, then tune your FM radio to the new frequency displayed on iTrip's screen.

6

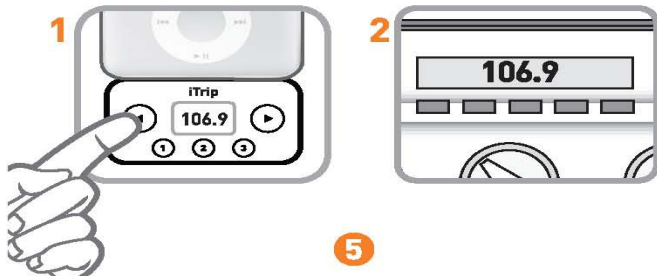
iTrip

1. Fully plugged in to your iPod dock connector?
2. Has iTrip gone into low-power mode? iTrip goes into a power-saving state after an extended period of no music. To get the music going again, just press Play on your iPod, or disconnect and reconnect iTrip to your iPod.
3. Are iTrip and radio tuned to matching frequencies?

11

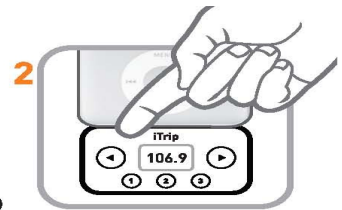
Using Presets

In areas with numerous overlapping radio stations, you may need to switch frequencies to get the best possible sound, depending on your location. iTrip's presets make switching easy.



5

2. Press ◀ or ▶ repeatedly to set iTrip to match the selected frequency on the radio. Press and hold the ◀ or ▶ to move through the frequencies quickly.



2

HINT: What are some of the best frequencies for where you are or where you're headed? Visit Griffin's StationFinder (<http://stationfinder.griffintechology.com/>) and get a list of of the best frequencies with just a few clicks.

4

Troubleshooting

Problems? No problem. Check these tips for a quick fix:

FM Radio

1. On?
2. Tuned to an unused frequency?
3. Radio volume adjusted?

iPod

1. Hold switch off?
2. Play button depressed? Song not paused?
3. iPod battery completely drained? If so, your iPod must recharge for a few short minutes before iTrip senses your iPod. (iPod must have partial charge to power iTrip.)

10