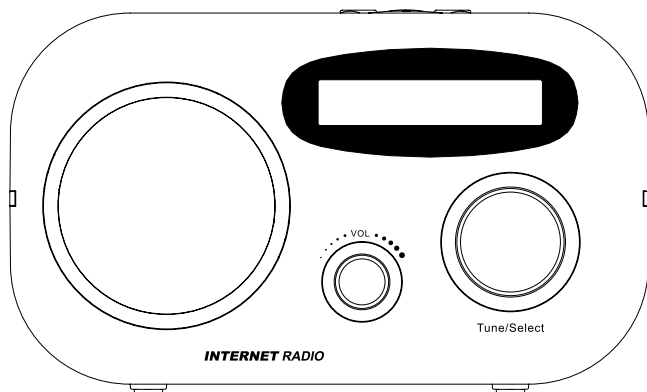


User Manual

PORTABLE INTERNET RADIO



IR-80

Please read this user manual carefully before using the receiver

Functional Modes and Features

The **product** is a small, lightweight and stylish design battery operated Internet Radio. This **product** incorporate an Internet radio and Music streaming features to be use with a Lan or Wi-Fi network. Other features include a Music Player and a FM radio. Powered by an external battery and optional DC Power Adaptor, the **product** provides hours of network audio streaming from Internet radio stations and music steaming from your own networked PC connected to your Lan or Wi-Fi access point.

A brief description of the features is listed below:

<Internet Radio> Media Stream

Internet Radio gets you connected to various radio stations around the world through the Lan or Wi-Fi .

Internet Radio <Media Stream >

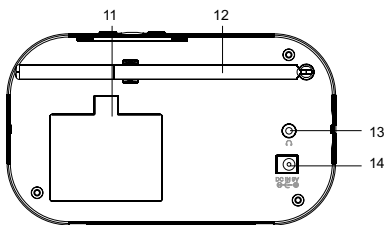
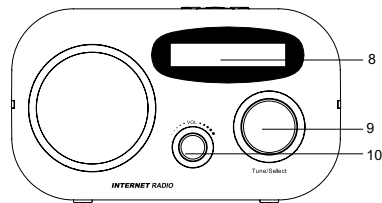
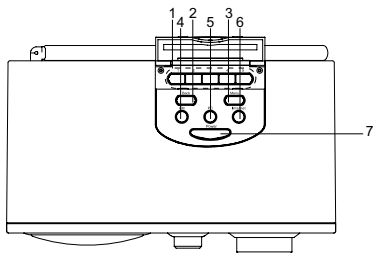
Media Stream play music streams from your Windows media player version11 application in your PC or Notebook running Windows XP or Vista OS over the Lan or Wi-Fi connection.

<FM Setting >

FM, connects to the local FM Radio Stations

FM <Setting >

Setting, used for performing all the settings in your **product**



Product Button Definition

1	P1 – P5	Preset Station Buttons. Press and hold to save a station to that preset number, and press particular Preset button to call back the saved station.
2	BACK	Press to go up one list screen level or to return to previous menu
3	MENU	Press this button to bring you back to top main menu
4	FM	Press this button to enter the "FM" mode directly
5	PC	Press this button to enter the "Media stream" mode directly
6	Internet	Press this button to enter the "Internet Radio" mode directly
7	Power	Power On/Off
8	Dot Matrix	2X16 dot matrix LCM display
9	NAVI knob/ Enter II	Turn to scroll through the menu listing in down or up directions / play previous or next song / go down or up in pop up menu list and use to as Enter key to select an item. / To select an item
10	Volume NAVI	Turn to increase or decrease volume level this button to bring you back to top main menu
11	Battery Compartment	To hold 6 X AA-size battery dry cell or rechargeable NiMH/NiCd (External battery charger required)
12	Telescopic Antenna	
13	Earphone Jack	3.5 Earphone Jack, For connecting the Earphones. Insert the Jack pin until it clicks it the place.
14	DC input	+9V DC Input

Getting Started

Package contents

Your **product** package includes:

- **Product**
- Adaptor
- User Manual

Powering ON your product

To Power on your **product**, press and hold the Power key, you will see the " King Champion Internet Radio " screen.

To Power off your **product**, press and hold Power key, you will see the " Internet Radio Power off " screen.

After the startup is complete, you will see the Main Menu screen that shows you the Internet Radio, Media Stream, FM Radio and Setting modes as option in a list. Use the Navigation Knob to scroll through the list as you like and press the Navigation Knob to confirm the selection.

At any time in any of this mode, if you press the Menu button it will bring you back to the Main Menu.

Setting up the Wi-Fi

Your **product** can be easily connected to the Wi-Fi networks. When a Wi-Fi connection is required (for instance, to play Internet Radio or Media stream) the **product** will automatically look for a network and try to connect to it.

When you are connecting the **product** for the first time, you will have to setup the network by select the Network Configure option from the Setting mode in the Main Menu. To do this please following the steps listed below:

- From the main menu select the **Setting** option by using the **NAVI Knob** to navigate and select it.



- Next select the Network Configure option from the list using the **NAVI Knob**.

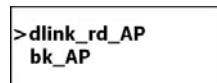


- Select Wi-Fi Setup from the menu list by using the **NAVI Knob** to navigate and select it.



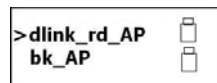
Of course, if you directly enter into the "Internet radio" menu, the unit can pop up the wizard also as below

- For the case of using the Wi-Fi network you will see this screen that list two options for you, the Load profile and Search network option respectively.
- The Load profile option let you load back a profile that you have saved in the previous section, please use the **NAVI Knob** to navigate and select it. If the saved profile has the correct information that match to the current AP you are going to connect to, **product** will try to connect to it and put a tick beside the AP name once the **product** successfully connected to the AP.



To search for a new wireless Access Point before using the Wi-Fi connectivity, please select the Search network from the above screen.

- Then you will see a screen showing "Searching" while the product trying to search and show you all the available Access Points that the **product** able to find. The product will then show all the Wi-Fi networks SSID in the range as shown in the screen for example.



- Once you have gets the list of Wi-Fi networks AP SSID use the **NAVI Knob** to navigate and select the AP SSID that you wish to use. Once the network AP is selected the product will prompts you for the Default Network key which is the WEP/WPA default secure key of the Wi-Fi Access point.

<01234 5 6789AB>

- Use **NAVI** to key in the network key. Turning the NAVI knob left and right will change the numbers, characters and symbols that you wish to have to show in the center of upper line of the screen, in this example, the number '5' is the current active number, to select it press the NAVI knob once. Turning the NAVI knob to the left (counter clock wise) or right will shift the 'character' to the center of the screen for selection and pressing the **NAVI** Knob will select it.
- Use the Back button to delete the selected character.

<01234 5 6789AB>
55555555

- Once the Network Key has been completed key in, next press-and-holds the **NAVI** Knob to confirm the Network key.
- Now the product should try to access the Access point that you have selected.
- Once the product managed to connect to the AP it will now put a star next to the network AP SSID name that you have selected. Press the **NAVI** Knob and save the profile. So that the future connection to this Wi-Fi AP you don't have to go through the Wi-Fi AP selection process again, if you are using the same Wi-Fi AP for Internet Radio or Media Streaming

>dlink_rd_AP *
bk_AP

- Once you select to save the profile, it will prompt where to save as shown. Use the NAVI Knob to select Yes or No.

Save Profiles?
No Yes

Now your Wi-Fi AP connection is setup.

Setting up the LAN

Select LAN Setup from the menu list by using **NAVI** Knob to Select it.

If you directly enter into use lan,the unit will connect to network automatical with DHCP server.

Use Wi-Fi
< **Use LAN** >

Internet Radio

Internet radio gives you the access to all the Radio stations available worldwide. Once your **product** is connected to the lan or Wi-Fi, you can listen to either all the preset channels by direct press the preset buttons, P1 to P5 listen to the Internet Radio station worldwide from **Radio Search** option, from which it has all your favorite Radio channels being arranged in different categories, please refer to **Radio Search** section below for details.

Listening to the Internet Radio

To listen to the Internet Radio, first the product must connected to Internet as explained on the above section, then select **Internet Radio**, from the **Main Menu**.

Radio Search is an advance search which is organized into different categories. Please read on the below section on Radio Search for details.

Press "Preset" to access to the saved preset station, then you turning NAVI knob button to the left or right to select one preset station, then pressing NAVI knob button to confirm. If you want to save the current station to preset., you can turn NAVI knob button to the left or right and select the position, then press NAVI knob button to save it.

>Radio Search
Preset 1: Empty

Preset 1: empty
P2: Energy FM

Radio Search

The Radio Search is organized to search the stations in the following groups:

Local stations includes stations organized by the type of stations(All stations, Adult contemporary, Business news, Classical, Comedy, News , News Talk, Sports , Talk, Top 40, Variety, World Asia)

Genres includes stations organized by the type of music played (e.g. Ambient Big Band, Blues, Classic Rock, Classical, Country, Dance, Electronic, Folk, Hard Rock, Hip Hop, Jazz, New Age, News, Oldies, Public, Religious, RnB, Rock, Soft Rock, Soundtracks, Sports, Talk, Weather, Web Audio and World).

Countries are a search based on the different geographical locations of the world.

New Stations Contains list of new Radio Stations.

Most Popular Stations include stations based on the popularity.

Note: All above listings are Music Portal side dependent it may vary from time to time.

>+Genres
+Countries

>+New Stations
+Most Popular

In the Internet Radio mode, if you turn the NAVI knob, it will show the options - Radio Search and Preset 1 to 5.

Media Streaming

Now that your connection is setup, you can access any songs from your PC that running Windows Media Player Version 11 in Windows XP or Vista OS.

Listening to Media Stream

Select the **Media Stream** from the Main Menu. It will access the lan or Wi-Fi scans for the PC server. It will prompt you the menu screen as shown after successful connection to PC. If previously you already successfully managed to scan some server than the product will directly shown you the list of found servers.

Now you can select the server that you want to access to by using **NAVI** Knob to scroll through it and lastly confirm by pressing it.

Depend on the Media Server you are accessing it may be organized into a few folders and you can select the Music or Playlists to stream your favorite music

Select the folder using **NAVI** Knob and confirm by pressing the same Knob.

Below may be the folder that you may see:

Music, has the list of the Music

Scanning Servers

**<Server1: Name:
Server2: Name:**

> + Music

NOTE

Make sure that you have your PC or Notebook turned-on and it is running the Windows Media Player (Version 11) in Windows XP or the Vista OS. You should also share the Music streaming to new device in your PC or Notebook Media Player. [See Setting up PC Media Player 11.

Or it will display "sever" id not available after scanning, then back to previous menu.

Streaming the Music

Once you select the Music folder in your PC server, you can stream and listen to all the music from your PC's Media Player over the lan or Wi-Fi.

Select the Music Folder or Song that you wish to listen to by turn and press the NAVI Knob and the product will start to play the song as shown.

After a song has finished it will continue to play the next song under the same folder.

**> Highway Blues
All my roads**

**Highway Blues
...**

**Highway Blues
>>>>>>**

**Highway Blues
- 64kbs**

Now you can stream your favorite music from your PC, acting as your Juke Box for the **product**.

Setting up Windows Media Player version 11

You should be running Windows XP OS on your PC/laptop, and Windows Media Player version 11. Now open the Windows Media Player, and choose **Library**. From the drop down list of the menu select the **Media sharing**.

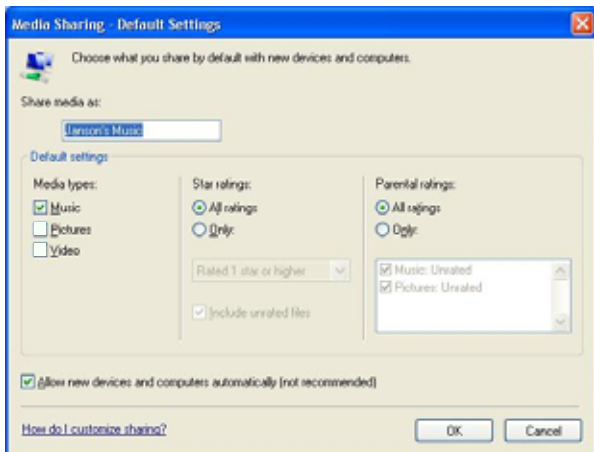


Now tick the 'Share my media to' and select settings



Please un-tick Pictures and video under Media type.

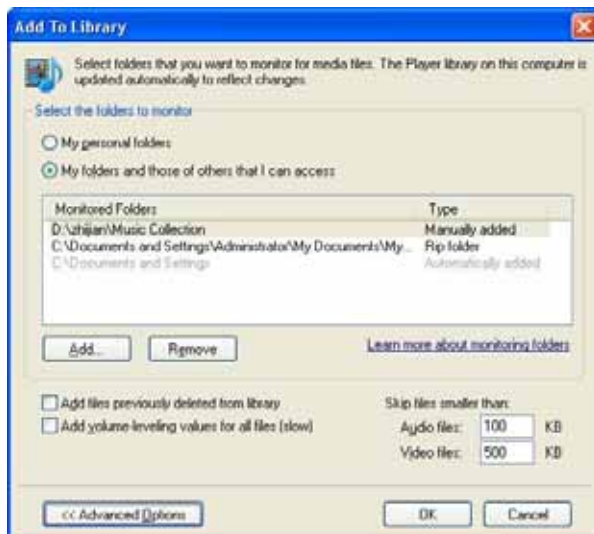
Next tick the 'Allow new devices and computers automatically and press OK



To select the folders for monitor and for sharing, choose **Library**.

From the drop down list of the menu select the **Add to Library**.

Select the folders to monitor as below



After selected the folders to monitor and share in the Player Library, click OK

FM Radio

FM Radio connects you to the local radio channels available in your city. To listen to the FM Radio, select the **FM Radio**, from the main menu and it will start playing the last played channel.

To change the channels use **NAVI Knob**. Press the NAVI knob once you will get the "Auto Scan" appear at the bottom line of the screen, this show you that currently you are in the "Auto Scan" Mode and if you press the second time you will get the "Fine Tune" option, from there you can enter to the Auto or Fine tune option respectively.

FM: 95.0 MHz

Auto Scan, allows you to do auto scan for available channel by using the NAVI Knob to scan forward or backward from a current channel to next available channel.

FM: 95.0 MHz
Auto Scan

Fine tune, allows you to do fine tuning on a channel by using the NAVI Knob to adding or subtracting by 0.1MHz from a channel station.

FM: 95.0 MHz
Fine Tune

Preset Station Buttons allow you save and call back those prefer stations:

To save a station while listening to a radio station to a preset number just press and hold that preset button.

Press a particular Preset button to call back the saved station and listen to it.

To play next available station just turns the NAVI knob.

Setting

Setting allow you to customize the settings of your **product**. Select the **Setting** from the main menu and you will see the settings menu. It includes the following categories:

Network Configuration, helps you set up and disconnect from the **Wi-Fi** network and show you the current network status of the product, for more details on how to do **Wi-Fi Setup** please refer Setting up the **Wi-Fi** section above.

Disconnect, will disconnect product from the **Wi-Fi** Network and Internet Connection.

Networks Status, show you the below:

- **SSID** the SSID of the AP that currently the product is connected to
- **IP** the IP of the product assigned to by the **Wi-Fi AP** and can configure
- **MAC** the MAC Address of your product

Sample Screens shown the SSID IP and MAC address of the product that connected to an AP

Language, let you choice the preferred languages to use

<Network Config>
Language

< User Wi-Fi >
Use Lan

<Wi-Fi Setup >
Disconnect

<Networks Status>

<SSID:bkap >
IP:10.10.1.114

<IP:10.10.1.114>
MAC:00:1D:DF:A

Network Config
<Language >

<English >
Francais

<Espanol >
Deutsch

<Dansk >
Italiano

<Nederlands >
Portuguesa

<Suomi >
Svenska

<Norsk >

<Factory Reset >
About

Factory Reset, allow you set bring back all the setting to the default factory settings. Use the NAVI knob to select the Yes or No option.

Factory reset?
No Yes

About, details of the player Model name and the firmware version.

See the sample screen shot shown.

Factory Reset
<About >

HW:IR-80
SW:999.999.999

Glossary

Wi-Fi

Wi-Fi, popularly known as an acronym for wireless fidelity, was originally a brand licensed by the Wi-Fi Alliance to describe the embedded technology of wireless local area networks (WLAN) based on the IEEE 802.11 specifications. Use of the term has now broadened to generically describe the wireless interface of mobile computing devices, such as laptops in LANs. Wi-Fi is now increasingly used for more services, including Internet and VoIP phone access, gaming, and basic connectivity of consumer electronics such as televisions, DVD players, and digital cameras.

Source - <http://en.wikipedia.org/wiki/Wi-Fi>

WEP

Wired Equivalent Privacy (WEP) is a scheme to secure IEEE 802.11 wireless networks. It is part of the IEEE 802.11 wireless networking standard. Because wireless networks broadcast messages using radio, they are susceptible to eavesdropping.

Source - http://en.wikipedia.org/wiki/Wired_Equivalent_Privacy

WPA – Enterprise Version

Wi-Fi Protected Access (WPA and WPA2) is a class of Settings to secure wireless (Wi-Fi) computer networks. It was created in response to several serious weaknesses researchers had found in the previous Setting, Wired Equivalent Privacy (WEP). WPA implements the majority of the IEEE 802.11i standard, and was intended as an intermediate measure to take the place of WEP while 802.11i was prepared. WPA is designed to work with all wireless network interface cards, but not necessarily with first generation wireless access points. WPA2 implements the full standard, but will not work with some older network cards. Both provide good security, with two significant issues:

Source - http://en.wikipedia.org/wiki/Wi-Fi_Protected_Access

DHCP

DHCP is a set of rules used by communications devices such as a computer, router or network adapter to allow the device to request and obtain an IP address from a server which has a list of addresses available for assignment.

DHCP is a protocol used by networked computers (*clients*) to obtain IP addresses and other parameters such as the default gateway, subnet mask, and IP addresses of DNS servers from a DHCP server. It facilitates access to a network because these settings would otherwise have to be made manually for the client to participate in the network.

Source - http://en.wikipedia.org/wiki/Dynamic_Host_Configuration_Protocol

SSID

In Wi-Fi Wireless LAN computer networking, a **service set identifier (SSID)** is a code attached to all packets on a wireless network to identify each packet as part of that network. The code is a case sensitive text string which consists of a maximum of 32 alphanumeric characters. All wireless devices attempting to communicate with each other must share the same SSID. Apart from identifying each packet, SSID also serves to uniquely identify a group of wireless network devices used in a given "Service Set".

Source - <http://en.wikipedia.org/wiki/SSID>

Troubleshooting and FAQ

Question: When browsing the Internet Radio I got the message 'Unformatted Channel'. What does that mean?

Answer: That's because the station is closed.

Question: Why can't I play the Music even when I have selected my Media Player?

Answer: Please check whether you have shared the Music streaming of the entire new device in the Media Player 11 in Windows XP or Vista. Please read setting the Windows media player 11 on page 8

Question: Why is my player not streaming even I have done the setup of the Windows media player 11?

Answer: Please check if your PC or Notebook has gone to Hibernate mode. The Media streaming does not work in the hibernate mode.

Question: Can I download the music folder or music file to my **Music Player**?

Answer: No the device do not support music file download

Question: What is Radio search? And am I required to subscribe to Radio search service for my product in order to listen to Internet Radio?

Answer: Radio search service provides online internet radio directory which aggregates tens of thousands of radio stations and podcasts. The directory maintained by Radio search are updated time to time in order to make sure the maximum level of accessibility of individual Internet Radio channel. Your product product is shipped with bundling Radio search service to make sure customer have seamless user experience. So, customer needs not have individual subscription for Radio search service.

Question: How do I connect my product to a Wi-Fi network?

Answer: When you use a feature that requires an internet connection, like Internet Radio and Media Stream, the product will automatically connect to available network. This process is called "Wi-Fi zero-configuration". Once the network is connected, you can automatically enter into the function modes.

Question: What is product Wi-Fi zero-configuration? How does it work?

Answer: product Wi-Fi zero-configuration is an intelligent service used to provide end customer like you a harass-free user experience on Wi-Fi setup. It will automatically connect to open Wi-Fi access point or load saved profiles.

Question: What is product Wi-Fi profile?

Answer: product Wi-Fi profile is a configuration set for your Wi-Fi connection. It contains all the information you need to access a Wi-Fi access point. The profile helps you to ease the trouble to remember all the details regarding access point.

Question: What is Wi-Fi setup wizard?

Answer: Wi-Fi setup wizard will help you setup up Wi-Fi network in step by step manner in certain special case, like when you access a fresh access point with security protection for the very first time.

Question: How do I bring up Wi-Fi setup wizard?

Answer: When Wi-Fi zero-configuration is in progress, you can switch it to choose Wi-Fi setup wizard by press the "NAVI" Knob once. Also, you may like to go into "Setting" then "Network" menu then choose the "Use LAN" or "Use WIFI" option from there.

Question: How do I input password for Wi-Fi security?

Answer: An input screen (Soft keypad) will automatically come up when necessary. Simple soft keypad interface gives a quick way to key in letters, numeric and symbols. You can also do simple editing like cursor locating, delete, etc.

Question: What wireless standards are compatible with my product?

Answer: product is an 802.11 wireless b/g compatible device. It includes support for WEP and WPA/WPA2 Personal authentication security standards. WPA/WPA2 Enterprise authentication security is not supported.

Question: Why does my product only have Wi-Fi antenna icon but no signal bar?

Answer: Please check your Wi-Fi access point and network server configuration on DHCP portion. This indicates there is no DHCP server is presented in the network environment.

Question: Can I connect to public access Wi-Fi networks (hot-spot)?

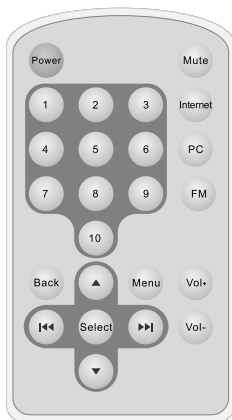
Answer: You can not connect to hot-spot access point because it usually needs an application level web-based authentication.

Question: Which bit rate will my product player support?

Answer: The product player will support 64-320Kbps for MP3 and 32-320 Kbps for WMA.

Changes or modifications not expressly approved by the party responsible for compliance could void the user's authority to operate the equipment."

Remote control



IR controller

1. Power: Only power off button
2. 1-10: preset button
3. Mute: mute the voice
4. Internet: internet mode
5. pc: Media player mode
6. FM: FM mode
7. back: Press to back pre_menu
8. menu: Press to display main menu
9. vol+: Increase the volume
10. vol-: decrease the volume
11. Select: Press to select a displayed option
12. UP/Down: Use to search for stations, and use to change the option showed on the disp