



**Kinpo Electronics, Inc.**

**User's Guide  
to the  
Modem Icon Utility**

**Model No.: A200A(A2)**

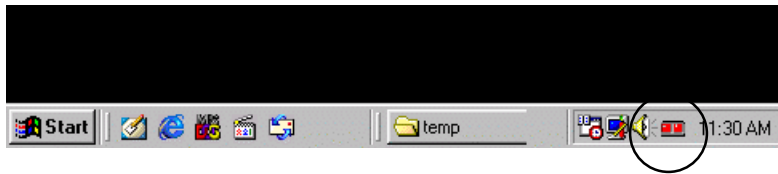
Version : E1  
Date : Oct. 22, 1999  
Software: Itex

## User's Guide to the ITeX Modem Icon Utility

The Modem Icon Utility will allow the user to monitor the ADSL modem's connection and ATM/ADSL states, setup the PVC values, and run a few diagnostics tests.

### Getting Started

Before proceeding forward, please make sure that the modem has been installed correctly. Contact your network administrator if help is required. The Modem Icon Utility is displayed as an icon on the task bar of the windows desktop screen. As shown below.



### Using the Modem Icon

The Modem Icon serves two purposes: 1. To display the modem status and 2. To allow the user to monitor the ADSL modem.

### Modem Status

The Modem Icon consists of two lights side by side. These lights are used to display the state of the modem. The left light signifies data is being transmitted whereas the right light signifies information is being received. The state of the modem can be determined as follows:

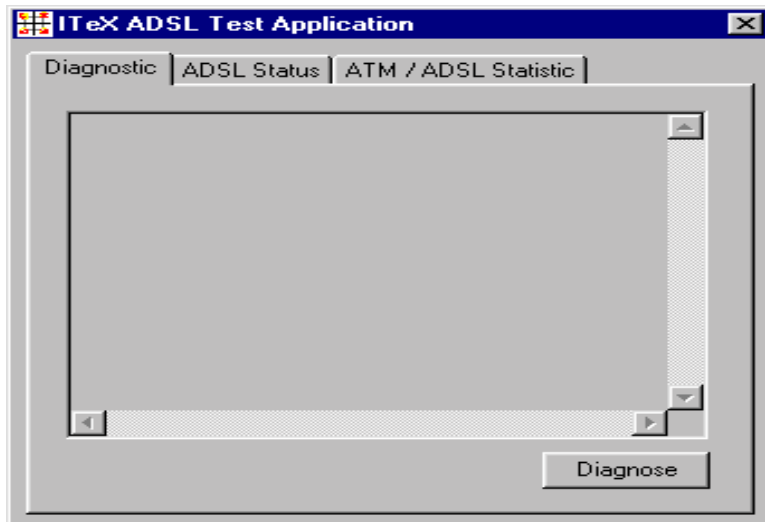
Code	Description
Red, Red	No signal
Black/Yellow or Yellow/Blk flashing	Modem is connecting
Green, Black	Modem is transmitting data
Black, Green	Modem is receiving data
Green,Green	Modem is transmitting and receiving data
Black, Black	Modem is idle, connected
∅	Modem is disconnected, or a problem exists



Placing the mouse cursor on the Modem Icon will show a summary of the modems status by displaying the modem's state, upstream line rate and downstream line rate.

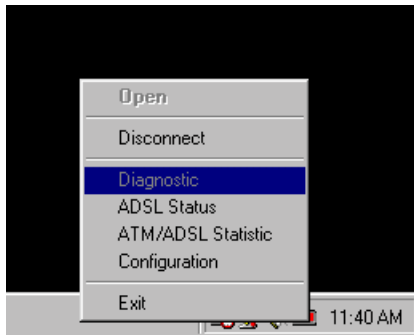
## Monitoring the ADSL Modem

### ITeX ADSL Test Application



Pointing to the Modem Icon, and clicking on the left mouse button will display the ITeX ADSL Test Application window. From this window, the user will be able to run Diagnostics, review the ADSL modem status and view the ATM/ADSL Statistics. For a more detailed explanation of each window, turn to the appropriate section in this manual for each menu.

## Modem Icon Menu

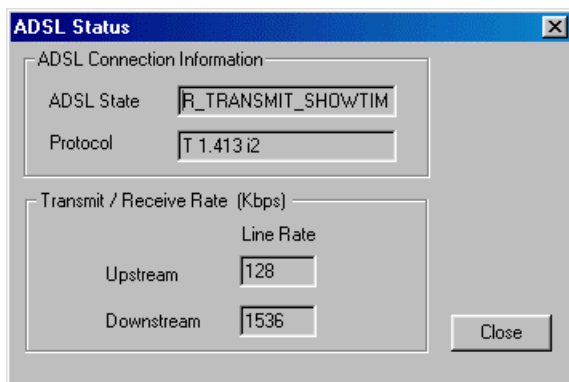


Pointing to the Modem Icon and clicking on the right mouse button will display the Modem Icon options window. From this window, the user will be able to: a) "Disconnect" the modem from or "Connect" the modem to the central office equipment; b) Run a diagnostic test to test the modem; c) Monitor the ADSL modem status; d) Monitor various ATM/ADSL statistics and e) configure the PVC values for RFC1577 and RFC1483.

## Connecting and Disconnecting the ADSL Modem

This option will allow the user to connect to or disconnect from the central office equipment. If the modem is disconnected, simply choose the connect option and the ADSL modem will start to connect. To disconnect the modem, simply select the disconnect option.

## ADSL Status Menu



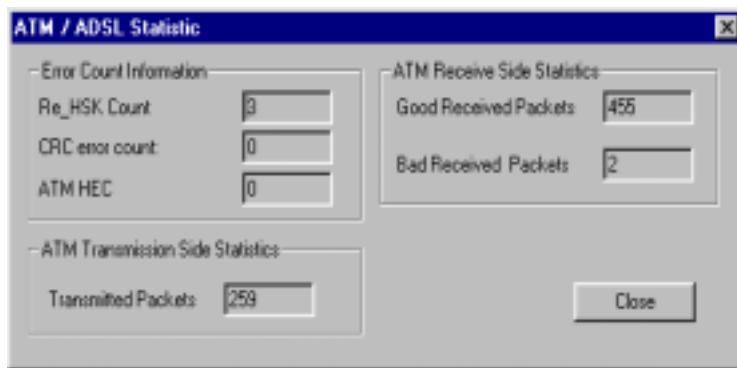
The ADSL Status menu allows the user to monitor the ADSL connection as well as monitor the transmit and receive line rates.

ADSL State - displays the current status of the modem. These states are: Connected, Connecting, and Disconnected.

Protocol - The protocol section displays which ADSL standard is being used.

Transmit /Receive Rate - In the Transmit and Receive section, the user will be able to see what kind of line rate is being achieved for both upstream and downstream line rates.

### ATM / ADSL Statistics Menu



From this menu, the user will be able to see Error Count Information, ATM Transmission statistics and ATM Receive statistics.

#### Error Count Information

Re\_HSK Count - The number of times handshaking has occurred.

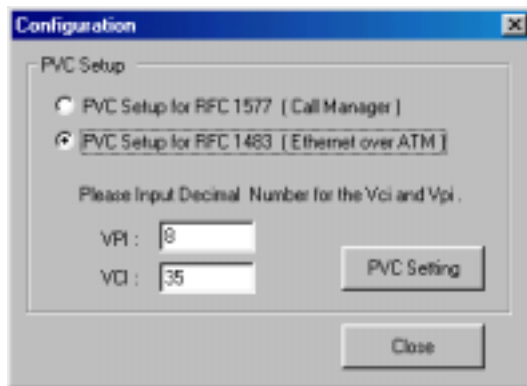
CRC error count - The number of cyclic redundancy check (CRC) errors accumulated during showtime. The count will be reset to zero after the next handshaking. During showtime, the receiver keeps checking the CRC check sum for each received superframe. If there is a mismatch between the received check sum and the locally calculated check sum, a CRC error has occurred.

ATM HEC - The number of ATM header error check (HEC) errors accumulated during showtime. The count will be reset to zero after the next handshaking. After entering showtime, the ATM TC layer at the receiver will undergo a cell delineation hunting process by finding the header of each received ATM cell. After successfully finding the cell delineation, the ATM TC layer will keep checking the HEC check sum for each received ATM cell. If there is a mismatch between the received check sum and the locally calculated check sum, an ATM HEC error has occurred.

ATM Transmission Side Statistics - displays the number of packets transmitted.

ATM Receive Side Statistics - displays the number of good and bad packets received.

## Configuration Menu



The Configuration menu will allow the user to check or change the ADSL network modems PVC values for RFC1577 and RFC1483. To change the PVC values, simply select one of the RFC protocols, enter the VPI and VCI values, and then click on the PVC Setting button. Click Yes when asked to reboot the system. Click on the Close button to close the configuration window.

## FCC Information

### Radio Frequency Interference Statement

This equipment has been tested and found to comply with the limits for a Class B digital device, pursuant to Part 15 of the FCC Rules. These limits are designed to provide reasonable protection against harmful interference in a residential installation. This equipment generates radio frequency energy and if not installed and used in accordance with the instructions, may cause harmful interference to radio communications. However, there is no guarantee that interference will not occur in a particular installation. If this equipment does cause harmful interference to radio or television reception, which can be determined by turning the equipment off and on, the user is encouraged to try to correct the interference by one or more of the following measures:

- ★ Reorient or relocate the receiving antenna.
- ★ Increase the separation between the equipment and receiver.
- ★ Connect the equipment into an outlet on a circuit different from that to which the receiver is connected.
- ★ Consult the dealer or an experienced radio/TV technician for help.

Notice: Any change or modification not expressly approved by the Guarantee of the equipment authorization could void the user's authority to operate the equipment.

This device complies with part 15 of the FCC rules. Operation is subject to the following two conditions:

- (1) This device may not cause harmful interference and,
- (2) This device must accept any interference received, including interference that may cause undesired operation.

The class B digital apparatus meets all requirements of the Canadian Interference - Causing Equipment Regulation.

Cet appareil numérique de la class B respecte toutes les exigences du règlement sur le matériel brouilleur du Canada.