

Chapter 9

Internet Explorer

- 9.1 Using Internet Explorer
- 9.2 Viewing Mobile Favorites
- 9.3 Changing Settings

9.1 Using Internet Explorer


You can use Internet Explorer Mobile to view Web pages on your mobile device in two ways:

- downloading pages through synchronization (See Chapter 11.)
- connecting to the Internet (see Chapter 8)

To switch to the program, tap  > **Internet Explorer Mobile**. The Internet Explorer Mobile home page appears.



Sending a Link via Email

1. Tap  > **Internet Explorer Mobile**.
2. Go to the page you want to send.
3. Tap **Menu** > **Tools** > **Send Link via E-mail**. A new message is created with the page address inserted in the message body.

9.2 Viewing Favorites

Your Pocket PC Phone has incorporated some of the useful favorites for your use.

On the Internet Explorer screen, tap **Favorites** to open the favorite list.

If you are using Microsoft Internet Explorer 4 or greater on the desktop computer, you can synchronize favorite links. If you are using Microsoft Internet Explorer 5 or later versions on the desktop computer, you can also synchronize mobile favorites. Synchronizing favorite links enable you to have the URLs of your favorite Web sites at your fingertips. Synchronizing a mobile favorite enables you to view Internet content on your device while you are disconnected from your Internet service provider and desktop computer. Favorites are stored in the Mobile Favorites subfolder of Favorites in Internet Explorer on the desktop computer. This folder will be created when you select the Favorites information type for synchronization in ActiveSync on your desktop computer. Favorites must be stored in this folder to be synchronized.

Synchronizing a Favorite Link

1. In ActiveSync on your desktop computer, click **Tools** > **Options**, and select **Favorite**. For more information on using ActiveSync, see ActiveSync Help.
2. In Internet Explorer on your desktop computer, save or move favorite links to the Mobile Favorites subfolder in the Favorites list. For more information on using Internet Explorer, see Internet Explorer Help on the desktop computer.
3. Connect your mobile device to your desktop computer. If synchronization does not start automatically, in ActiveSync on your desktop computer, click **Sync**.

Synchronizing a Mobile Favorite

1. In ActiveSync on your desktop computer, click **Tools > Options**, and select **Favorite**. For more information on using ActiveSync, see ActiveSync Help.
2. In Internet Explorer 5 or later versions on your desktop computer, browse to the page you want to view offline.
3. Click **Tools > Create Mobile Favorite**.
4. To change the link name, enter a new name in the **Name** box.
5. In the **Update** box, select a desired update schedule to keep the page in the Mobile Favorites folder up to date. You can also update content by clicking **Tools > Synchronize** in Internet Explorer.
6. To save the link in a subfolder of Mobile Favorites, click **Create In** and select the desired subfolder.
7. Click **OK**. Internet Explorer will download the latest version of the page.
8. To download the pages that are linked to the mobile favorite you just created, in Internet Explorer on the desktop computer, right-click the mobile favorite and then click **Properties**. On the **Download** tab, specify the number of links deep you want to download. To conserve device memory, only go one level deep.
9. Connect your Pocket PC Phone to the desktop computer. If synchronization between your device and desktop computer does not start, in ActiveSync on your desktop computer, click **Sync**.

9.3 Changing Settings

You can tap **Menu > View** on the main page of Internet Explorer Mobile to change the display settings.



You can also tap **Menu > Tools > Options** on the main page of Internet Explorer Mobile to customize more settings.

Item	Description
General	Enables you to change the home page or the displayed language.
Memory	Enables you to set the period before clearing the visiting history, and delete temporary files.
Security	Enables you to accept or clear cookies, and send out a warning when visiting unsecure Web pages.

Chapter 10


Microsoft Pocket Outlook

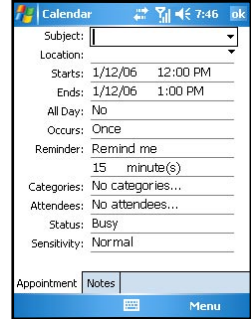
- 10.1 Calendar
- 10.2 Tasks
- 10.3 Notes
- 10.4 Messaging (Outlook, SMS, MMS)
- 10.5 MMS Messages

10.1 Calendar

Use Calendar to schedule appointments, including meetings and other events. You can check your appointments in one of several views (Agenda, Day, Week, Month and Year) and set Calendar to remind you of appointments with a sound or other method. Appointments for the day can be displayed on the Today screen.

Creating an Appointment

1. Tap  > **Calendar**.
2. Tap **Menu** > **New Appointment**.
3. To select a new date from a pop-up calendar, tap the display date. To enter or select a new time, tap the display time. Enter other appointment details. You will need to hide the Input panel to see all available fields.
4. You can assign an appointment to a category so that you can use these groupings to quickly display only the information you want.
Tap **Categories**. Select the categories that you want to assign the appointment to. To create a new category, tap **New**, enter the category name, and then tap **Done**. Tap **OK** to return to the previous screen.
5. Tap **Notes**. You can add written or typed notes and even recordings to an appointment. For information on Notes, see Section 10.3.
6. Tap **OK** to save the change.



The screenshot shows the 'Calendar' application window with the 'New Appointment' form open. The form contains the following fields and values:

- Subject: [Empty text box]
- Location: [Empty text box]
- Starts: 1/12/06 12:00 PM
- Ends: 1/12/06 1:00 PM
- All Day: No
- Occurs: Once
- Reminder: Remind me
- 15 minute(s)
- Categories: No categories...
- Attendees: No attendees...
- Status: Busy
- Sensitivity: Normal

At the bottom of the form, there are three buttons: 'Appointment', 'Notes', and 'Menu'.

- You can view appointments in one of several views. To change the view mode, tap the appropriate view icons on the command bar.
- Tap the Down arrow in the **Subject** and **Location** fields to quickly select from built-in or previous entries.
- If you set a reminder for an appointment, the Pocket PC Phone will remind you according to the settings in **Sounds & Notifications**.
- To make an appointment recurring, tap **Occurs** and select a pattern from the list. Or, to create a new pattern, tap **Edit pattern**, and follow the steps in the wizard.

View Modes

You can view appointments in one of several views (Agenda, Day, Week, and Month).

Agenda View

In Agenda view, upcoming appointments are displayed in bold.

Day View

In Day view, the subject of an appointment is displayed on the right of the appointment's time.

Week View

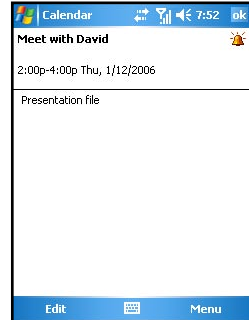
Week view displays blue boxes to indicate the dates and time of appointments.

Month View

Month view displays symbols to indicate the types of appointments you have on a given day. An upward triangle indicates a morning appointment; a downward triangle indicates an afternoon appointment. If you have appointments in the morning and afternoon, a solid square is displayed. If you have an all day event not marked **Free**, a hollow square is displayed.

Using the Calendar Summary Screen

When you tap an appointment in Calendar, a summary screen is displayed. To change the appointment, tap **Edit**.

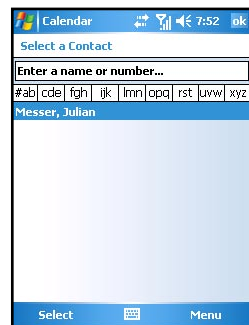


Sending Meeting Requests

Use Calendar to schedule meetings with people who use Outlook or Pocket Outlook. When attendees receive a meeting request, they can accept or decline the meeting. If they accept, the meeting is automatically added to their schedule. In addition, their response is sent back to you, and your calendar is updated.

Before you can send a meeting request, you must enter email addresses in Contacts and set up Messaging to send and receive messages.

1. Tap > **Calendar**.
2. Tap **Menu** > **New Appointment**.
3. Enter the meeting information.
4. Tap **Attendees** (you will need to hide the input panel to see this box).
5. Select the contacts you want to invite. Only those contacts with email addresses will be displayed.
6. Tap **OK**. Messaging automatically creates a meeting request and sends it to the attendees the next time you synchronize with your desktop computer. Any textual notes entered in the Notes tab (excluding writing or recordings) will be sent also.



- If you are sending the meeting request through a connection to an ISP or the network, rather than through synchronization with your desktop computer, tap **Menu** > **Options** > **Appointments**. In **Send meeting requests via**, tap the service you want to use to send the meeting request.

10.2 Tasks

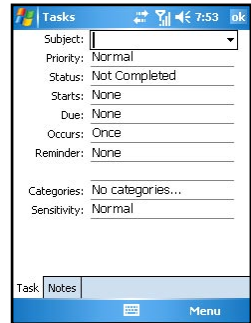
Use Tasks to keep track of things you need to do. A variety of task information can be displayed on the Today screen.



- To see the start and due date for a task in the task list, tap **Tools > Options**.

Creating a Task

1. Tap **Windows logo > Programs > Tasks**.
2. Tap **Menu > New Task**.
3. Enter detailed information, such as start and due dates. You will need to hide the Input panel to see all available fields.
4. You can assign a task to a category so that you can use these groupings to quickly display only the information you want. Tap **Categories**. Select the categories that you want to assign the appointment to. To create a new category, tap **New**, enter the category name, and then tap **Done**. Tap **OK** to return to the previous screen.
5. Tap **Notes**. You can add written or typed notes and even recordings to an appointment. For information on Notes, see Section 10.3.
6. Tap **OK** to save the change.



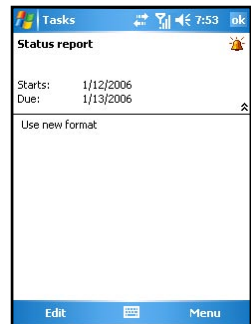
- If you set a reminder for a task, the Pocket PC Phone will remind you according to the settings in **Sounds & Notifications**.
 - To quickly create a task, enter text in the “Tap here to add a new task” field at the top of the screen. If you don’t see this box, tap **Menu > Options > Show Tasks entry bar**.

Using the Tasks Summary Screen

The task list displays a list of your tasks. Overdue tasks are displayed in bold and in red.

If you have a long list of tasks, tap **Menu > Sort By** and select the option you want to sort on.


To see more task information, tap the task. To change a task, tap it in the task list, and then tap **Edit**.



10.3 Notes

Notes may help you quickly capture your ideas, notes, and thoughts. You can create a note using written and typed text, drawings, and recordings. You can also share your notes with others through email, infrared, and synchronization with your desktop computer.

Creating a Note

1. Tap  > **Programs** > **Notes**.
2. Tap **New**.
3. Enter your note information. For information on entering information, see Section 2.11.

Viewing Notes

The note list displays a list of your notes and recordings. If you have a long list, tap **Sort By** and select the option you want to sort on. To open a note or play a recording, tap it.



10.4 Messaging (Outlook, SMS, MMS)

You can receive Internet email messages, text messages (SMS) and multimedia messages (MMS) in Messaging. Internet email messages are sent by using an address you receive from your Internet service provider (ISP) or your employer. SMS and MMS messages are sent and received through your wireless phone service provider by using a phone number as the message address.

You can send and receive email by synchronizing with your desktop computer, or by connecting to a Post Office Protocol 3 (POP3) or Internet Message Access Protocol 4 (IMAP4) mail server. You need to set up an email account for each method that you use except for an Outlook email account, which is set up by default. The Outlook Email account on your device is used to store messages that you send and receive through synchronization with a desktop computer. Account names will appear when you open the folder list (located on the left, under the navigation bar) in the message list view.

With synchronization, messages are synchronized between the device Inbox folder for the Outlook Email account and the desktop computer Inbox by using ActiveSync and Microsoft Exchange or Microsoft Outlook. For more information, see the “Synchronizing Outlook Email Messages” section later in this chapter.

When connecting to a POP3 or IMAP4 server, use a modem to connect to your Internet service provider (ISP), or a modem or Ethernet card to connect to the local area network that your email server is connected to. You can also use your phone to connect by using a cellular line connection. For more information, see Chapter 8.

Synchronizing Outlook Email Messages

After selecting Inbox for synchronization in ActiveSync, Outlook email messages are synchronized as part of the general synchronization process.

During synchronization:

- Messages are copied from the Inbox folder on your desktop computer or the Microsoft Exchange server to the Inbox folder of the Outlook Email account on your device. (Note that you can only synchronize information directly with an Exchange Server if your company is running Microsoft Mobile Information Server 2003 or later.) By default, you'll receive messages from the last three days only, the first 100 lines of each new message, and file attachments of less than 100 KB in size.
- Messages in the Outbox folder on your device are transferred to Exchange or Outlook and then sent from those programs.
- The messages on the two computers are linked. When you delete a message on your device, it's deleted from your desktop computer the next time you synchronize.
- Messages in subfolders in other email folders in Outlook are synchronized only if they have been selected for synchronization in ActiveSync.



- For information on initiating Outlook email synchronization or changing synchronization settings, see ActiveSync Help on the desktop computer.
- Text messages are not received through synchronization. Instead, they are sent to your device via your service provider.

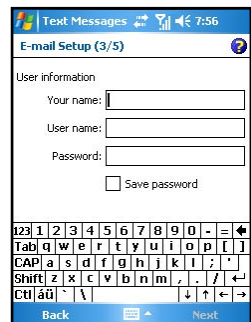
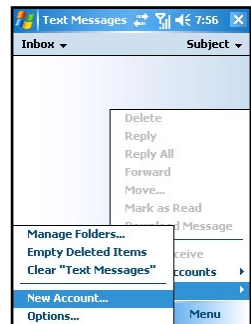
Connecting to a Mail Server

Setting up a POP3 or IMAP4 Email Account

1. Tap > **Messaging**.
2. Tap **Menu** > **Tools** > **New Account**.
3. Enter the email address and then tap **Next**.
4. The Pocket PC Phone will start the auto configuration. Auto configuration attempts to connect to your email server and download necessary settings so that you do not need to enter them manually. If auto configuration is successful, you may begin downloading messages from the server.
5. If auto configuration is unsuccessful, tap **Next** for manual configuration. Enter the displayed name, the user name and password provided by your ISP or network administrator. You can select **Save password** to avoid having to reenter it later.
6. In the **Account type** list, tap **POP3** or **IMAP4**. (POP3 is the most common mail protocol for ISPs.)

In **Your name**, enter a unique name for the account, such as Work or Home. This name cannot be changed later.

Then Tap **Next**.



- In **Incoming mail**, enter the name of your email server.
In **Outgoing mail**, enter the name of your Simple Mail Transfer Protocol (SMTP) host.
If you are using a network connection, in **Domain**, enter your domain name.
- Select if you want to download the messages of this account immediately.



Deleting an Account

- Tap **Messaging**.
- Tap **Menu > Tools > Options**.
- Tap and hold the name of the account, and then tap **Delete**.



- You can set up several email accounts including your Outlook email account, but you can set up only one text message account.
- You cannot delete your text message account.

Downloading Messages from the Server

- In Messaging, tap **Accounts > Connect** to open a connection to the Internet or your corporate network, depending on the account. For information on connections, see Chapter 8.
- The messages on your device and email server are synchronized: new messages are downloaded to the device Inbox folder, messages in the device Outbox folder are sent, and messages that have been deleted from the server are removed from the device Inbox.
- Tap a message in the message list to open it.
- If you read a message and decide that you need the full copy:
 - Tap **Edit > Mark for Download** while in the message window.
 - If you are in the message list, tap and hold the message, and then tap **Mark for Download**.
- When finished, tap **Accounts > Disconnect**.



- If you selected some items when setting up an email account, then the mail attachments or entire messages may be downloaded.
- Receiving entire messages consumes storage memory.
- The size column in the message list displays the local size and server size of a message. Even when a message has been downloaded fully, these numbers may differ, because the size of a message can vary between the server and the device.


Reading and Responding to Messages

Downloading Messages

The way you download copies of messages depends on how you are receiving messages:

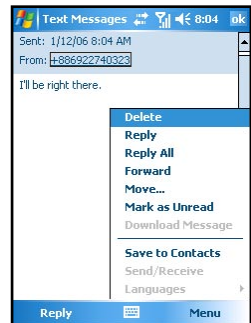
- If you receive email messages through ActiveSync, synchronization will be started.
- If you receive email messages through a remote email server, see the “Downloading Messages from the Server” section earlier in this chapter.
- Text messages will be automatically received when your phone is turned on. Otherwise, messages will be held by your service provider until the next time your phone is turned on.

Replying to or Forwarding a Message

1. Tap  > **Messaging**.
2. Tap to open the message.
3. Tap **Menu**, and then tap **Reply**, **Reply All**, or **Forward**.
4. Enter your response. To quickly add common messages, tap **My Text** and tap a desired message.
5. Tap **Send**.



- Selections in **Menu > Tools > Options > Message** determine whether the original text is included.




Receiving Attachments

An attachment sent with an email message or downloaded from the server appears as an icon at the bottom of the message in its own window pane. Tapping the attachment icon opens the attachment if it has been fully downloaded. You can mark an attachment for downloading (IMAP4 account only) the next time when the phone is connected.

If you receive messages through synchronization:

1. Start ActiveSync on your desktop computer.
2. Click **File > Mobile Device**, and then select your Pocket PC Phone.
3. Click **Tools > Options**.
4. Select the message account, and then click **Settings > Include File Attachments**.

If you receive messages through a remote email server and have an IMAP4 account:

1. Tap  > **Messaging**.
2. Tap **Menu** > **Switch Accounts** > **IMAP4**.
3. Tap **Next** until you reach **Server Information**, and then tap **Options**.
4. Tap **Next** twice, and then select **Get full copy of messages** and **When getting full copy, get attachments**.



- Embedded images and objects cannot be received as attachments.
- An embedded message can be viewed as an attachment when you are using IMAP4 to receive email. However, this feature will not work if TNEF is enabled so that you can receive meeting requests.

Receiving Meeting Requests

If you receive your email messages through ActiveSync, you will automatically receive meeting requests. If you connect directly to an email server, the server must be running Microsoft Exchange Server 5.5 or 2000 for you to receive meeting requests. If you are running Microsoft Exchange Server 2000, you will automatically receive meeting requests in your Inbox.

To receive meeting requests on Microsoft Exchange Server 5.5:


- Ask your system administrator to activate Rich Text Format and TNEF support for your account. If TNEF is enabled, you will not receive messages that are included in other messages as attachments, and you will not be able to tell if a message has an attachment until you get the full copy. In addition, download time may be longer.
- While setting up your mail account, select **Get file attachments**.

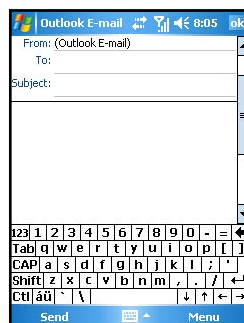
After you are set up to receive meeting requests:

1. If you connect directly to an email server and only receive message headers and/or a limited number of lines per message, tap and hold the message that you think is a meeting request, and then tap **Mark for Download**.
2. Open the meeting request.
3. Tap **Menu** > **Accept**, **Tentative**, or **Decline**. If you want, you can also include a written message with the response. The response will be sent the next time that you synchronize or connect to your email server, and your device Calendar will be updated.

Composing and Editing a Message

Composing and Sending a Message

1. Tap  > **Messaging**.
2. In the message list, tap **Menu** > **Switch Accounts**, and select the desired email account.
3. Tap **New**.
4. Enter the email address or text message address of one or more recipients, separating them with a semicolon. To access addresses and phone numbers from Contacts, tap **To**.
5. Enter your message. To quickly add common messages, tap **My Text** and tap a desired message.
6. Tap **Send**. If you are working offline, the message will be moved to the Outbox folder and will be sent the next time you connect.

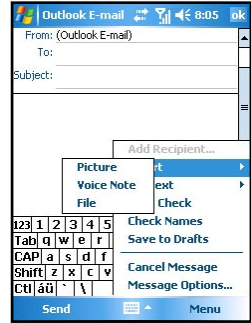




- If you are sending a text message and want to know whether it was received, before sending the message, tap **Menu > Tools > Options > Text Messages**, and select **Request delivery notifications**.

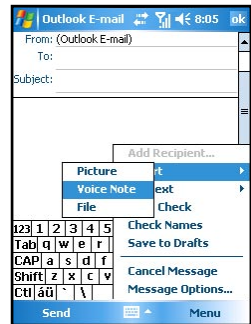
Attaching a File to a Message

1. Tap **Messaging**.
2. In the message list, tap **Menu > Switch Accounts**, and select the desired email account.
3. Tap **New**.
4. Enter the email address or text message address of one or more recipients, separate them with a semicolon. To access addresses and phone numbers from Contacts, tap **To**.
5. Enter your message. To quickly add common messages, tap **My Text** and tap a desired message.
6. Tap **Menu > Insert > File**.
7. Select the file you want to attach. OLE objects cannot be attached to Messaging messages. Messaging automatically converts Pocket Word files that you attach to messages to .doc format and Pocket Excel files to .xls format.
8. Tap **Send**. If you are working offline, the message will be moved to the Outbox folder and will be sent the next time you connect.




Inserting a Recording

1. Tap **Messaging**.
2. In the message list, tap **Menu > Switch Accounts**, and select the desired email account.
3. Tap **New**.
4. Enter the email address or text message address of one or more recipients, separate them with a semicolon. To access addresses and phone numbers from Contacts, tap **To**.
5. Enter your message. To quickly add common messages, tap **My Text** and tap a desired message.
6. Tap **Menu > Insert > Voice Note**.
7. Tap the Recording button to start recording, and the Stop button to stop. The recording will appear as an attachment.
8. Tap **Send**. If you are working offline, the message will be moved to the Outbox folder and will be sent the next time you connect.

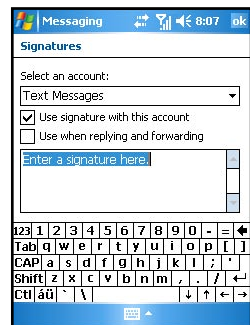
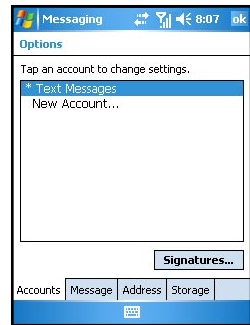


Creating a Signature

1. Tap  > **Messaging**.
2. Tap **Menu** > **Tools** > **Options**.
3. Tap **Signatures**.
4. Select an account for which you want to create or change a signature.
5. Select **Use signature with this account** if the check box is not selected.
6. Select **Use when replying and forwarding** if wanted.
7. Enter a signature in the box.
8. Tap **OK** twice to return to the message list.



- To stop using a signature, clear the **Use signature with this account** check box.
- You can use a different signature with each account.



Message Folders

Each email account and text message account has its own folder hierarchy with five default folders: Inbox, Outbox, Deleted Items, Drafts, and Sent Items. The messages you receive and send through the mail account are stored in these folders. You can also create additional folders within each hierarchy. The Deleted Items folder contains messages that have been deleted from the device. The behavior of the Deleted Items and Sent Items folders depends on the Messaging options you have chosen.


The behavior of the folders you create depends on whether you are using an Outlook email, text message, POP3, or IMAP4 account.

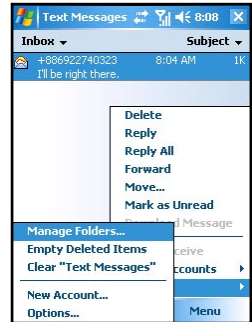
- If you use an Outlook email account, email messages in the Inbox folder in Outlook will automatically be synchronized with your device. You can select to synchronize additional folders by designating them for ActiveSync. The folders you create and the messages you move will then be mirrored on the server. For example, if you move two messages from the Inbox folder to a folder named Family, and you have designated Family for synchronization, the server will create a copy of the Family folder and copies the messages into that folder. You can then read the messages while away from your desktop computer.
- If you use a text message account, messages will be stored in the Inbox folder.
- If you use a POP3 account and you move email messages to a folder you created, the link will be broken between the messages on the device and their copies on the mail server. The next time you connect, the mail server will see that the messages are missing from the device Inbox folder and delete them from the server. This prevents you from having duplicate copies of a message, but it also means that you will no longer access messages that you move to folders created from anywhere except the device.

- If you use an IMAP4 account, the folders you create and the email messages you move will be mirrored on the server. Therefore, messages are available anytime while you connect to your mail server, whether it is from your device or desktop computer. This synchronization of folders occurs whenever you connect to your mail server, create new folders, or rename/delete folders when connected.

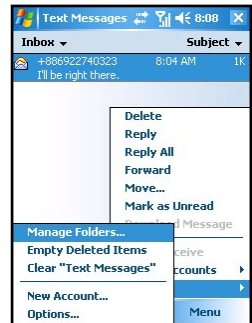
Managing Folders

For all accounts except Outlook Email, you can access folder options by tapping **Menu > Tools > Manage Folders**.

1. Tap  > **Messaging**.
2. Tap **Menu > Switch Accounts**, and then select the correct account.
3. Tap **Menu > Tools > Manage Folders**.




4. Tap and hold the desired folder to:
 - Tap **New Folder** to create a new folder under the folder that is currently selected.
 - Tap a current folder, and then tap **Rename** to change the folder name. Default folders, such as Inbox, cannot be renamed.
 - Tap **Delete** to delete a folder and its contents.
 - Tapping **Folder Options** to set folder synchronization settings on a per-folder basis by selecting the check box next to the folder you want to synchronize.



- You must be online to delete or rename an IMAP4 folder.

10.5 MMS Messages

The MMS program has been incorporated into the Messaging feature of your Pocket PC Phone.

Tap  > **Messaging** > **Accounts** > **MMS** to access the MMS folders.

To compose an MMS message:

1. Tap **New** > **Custom**.
2. Enter the email address or mobile phone number of one or more recipients
3. Enter the message subject.
4. Tap the photo insertion area to select a picture or video.
5. Tap the text insertion area to enter text information.
6. Tap the audio insertion area to create an audio file.
7. When it is completed, tap **Send**.



- You need to subscribe to the GPRS and MMS services with your service provider and configure your Pocket PC Phone properly before you can send and receive MMS messages.



Chapter 11

Microsoft ActiveSync

- 11.1 Installing Microsoft ActiveSync
- 11.2 Connecting to Your Desktop Computer
- 11.3 Synchronizing with Your Desktop Computer
- 11.4 Synchronizing Directly with Exchange Server
- 11.5 Changing the Synchronization Schedule
- 11.6 Backup and Restore

11.1 Installing Microsoft ActiveSync

With Microsoft ActiveSync on both your desktop computer and Pocket PC Phone, you can exchange information between a desktop computer or server and your Pocket PC Phone. To synchronize your Pocket PC Phone with your desktop computer, you must install ActiveSync on the desktop computer.

Using ActiveSync, you can:

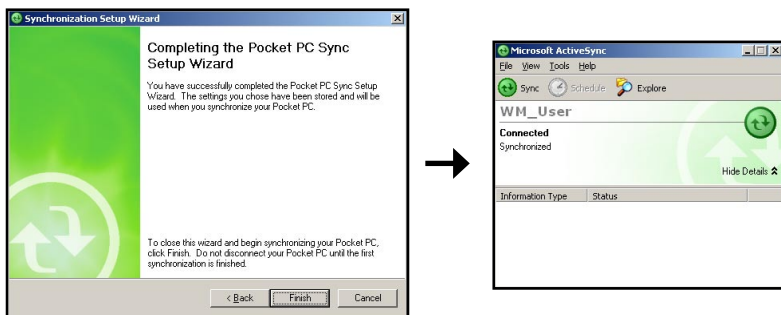
- Synchronize information between your Pocket PC Phone and desktop computer or server so that you have the latest information in all locations.
- Change synchronization settings and synchronization schedule.
- Copy files between your Pocket PC Phone and desktop computer.
- Add or remove programs to/from your Pocket PC Phone.

An Microsoft Companion CD is supplied with your Pocket PC Phone. You need to use the CD to install ActiveSync on the desktop computer before performing synchronization.

Follow this procedure:

1. Turn on the desktop computer.
2. Insert the Companion CD into the CD-ROM drive of the desktop computer.
3. On the first screen, click the arrow to enter the main screen and click **Start Here**.
4. On the next screen, click **Next** to pop up Get Ready to Synchronize screen.
5. The Microsoft © ActiveSync® installation wizard appears. Click **Next**.
6. The License Agreement appears, choose 'I accept the terms in the license agreement', and click **Next**.
7. The Customer Information screen appears, please enter user name and organization, and click **Next**.
8. The Destination Folder screen appears, click **Next**.
9. The Ready to Install the Program screen appears, click **Install**.
10. After the file transfer is completed, the installation is finished. Click **Finish**.
11. Click **Close back** to Windows to start ActiveSync.
12. When prompted, connect one end of the USB cable to the converter, and then connect the converter to the USB port on the bottom of your Pocket PC Phone.
13. Connect the other end of the USB cable to the USB port of the desktop computer.
14. Follow the on-screen instructions to establish a partnership between your Pocket PC Phone and your desktop computer. Select the types of information for synchronization. After your first synchronization, the data you have stored on your desktop computer such as Calendar, Contacts and Tasks are copied to your Pocket PC Phone.







- If you do not establish a standard partnership with the desktop computer, then you cannot perform synchronization between two devices, and you will need to select a desired partnership every time you connect to the desktop computer.

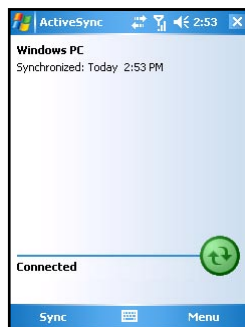
11.2 Connecting to Your Desktop Computer

You can connect your Pocket PC Phone to a desktop computer in several ways:

- Use the USB cable or an optional cradle.
- Use the IR port in place of using a cable. (For complete instructions on connecting to your desktop computer by infrared, see the ActiveSync Help on your desktop computer.)
- Use a network or dial-up connection.

11.3 Synchronizing with Your Desktop Computer

1. Connect your Pocket PC Phone to your desktop computer.
2. On your Pocket PC Phone, tap  > **Programs > ActiveSync.**
3. Tap  to start synchronization.



11.4 Synchronizing Directly with Exchange Server

1. Make sure that the Pocket PC Phone is not turned on.
2. Connect to the Internet. (See Chapter 8 for more information.)
3. In ActiveSync on the device, tap **Menu > Add Server Source**.
5. In **Server address**, enter the name of the server running Exchange Server, and tap **Next**.
6. Enter your name, password, and domain, and tap **Next**.
7. Select the check boxes for the types of information items that you want to synchronize with Exchange Server.
8. To change available synchronization settings, select the type of information and tap **Settings**.
9. Tap **Finish**.
10. Make sure that the server is powered on.
11. Connect the Pocket PC Phone to the Internet. (See Chapter 8 for more information.)

11.5 Changing the Synchronization Schedule

1. In ActiveSync on the device, tap **Menu > Schedule**.
2. Do one or more of the following:
 - When you are working or e-mail volume is high, select a shorter interval in the **Peak times** list.
 - When e-mail volume is low, select a longer interval or **As items arrive** in the **Off-peak times** list.
 - While roaming, tap **Use above settings while roaming**.
 - When you select Send in Messaging on the device, select the **Send outgoing items immediately** check box.

11.6 Backup and Restore

Use the USB cable to connect the SP70 to your PC.

The icon appears on the taskbar. Click guest partnership and click Next.

Use the backup/restore function of Active Sync\Tools.

Update your data for backup and then perform the backup procedure.

When the backup procedure is completed, click OK. If you select the restoring function, click Restore.

Click guest partnership and click OK.

Select to execute the restoring program.

When the restoring procedure is completed, click OK to restart the device.

Start the file menu of the device and exit.

Chapter 12

Today Plus

- 12.1 Programs
- 12.2 Media Content
- 12.3 Games
- 12.4 Phone Records
- 12.5 Settings

12.1 Programs

Tap **Today Plus** on the Today screen and then tap the Programs icon.

Programs provides shortcuts to items in Start\Programs, such as Word Mobile, Excel Mobile, PowerPoint Mobile, File Explorer, Tasks, Notes, etc.



12.2 Media Content

Tap **Today Plus** on the Today screen and then tap the Media Content icon.

Media Content provides shortcuts to items in the Media Content folder, such as Music, Album, Media Player, Java, and Wallpaper.



12.3 Games

Tap **Today Plus** on the Today screen and then tap the Games icon.

Games allows you to select and execute items in the Start\Programs\Games folder quickly.



12.4 Phone Records

Tap **Today Plus** on the Today screen and then tap the Phone Records icon.

Phone Records provide shortcuts to select options in Missed Call, Received Call, Dialed Call, SMS, MMS, E-Mail, Call Guard, and Call Answer.



12.5 Settings

Tap **Today Plus** on the Today screen and then tap the Settings icon.

Settings provides shortcuts to items in Start\Settings.



Chapter 13


VideoCam

- 13.1 Using the Camera
- 13.2 Using the DV
- 13.3 Changing VideoCam Settings

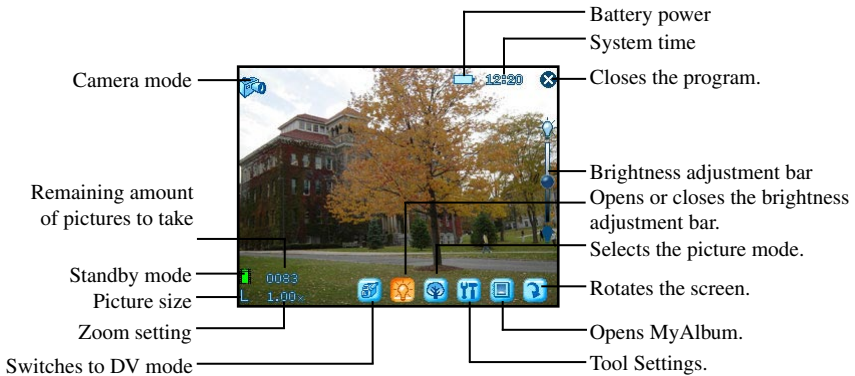
13.1 Using the Camera

The Pocket PC Phone is installed with the VideoCam program for you to take pictures.

Taking a Picture





1. Press the Capture key on the side of the Pocket PC Phone, or tap  **Programs > VideoCam**, to enter the Camera mode.
2. By default, the screen is displayed in the landscape mode.

You can use one hand to hold the Pocket PC Phone's bottom for easy operations. Be careful not to let your fingers cover the camera lens. You can press the Volume/Zoom key to adjust the size of the image.




3. Frame the subject to be photographed in the viewing window. When it is ready, press the Capture key on the side of the Pocket PC Phone to capture the picture.

The Pocket PC will preview the picture on the screen shortly. You can:

- Tap  to save the picture and continue taking pictures
- Tap  to send the picture in an email.
- Tap  to delete the picture.
- Tap  to switch to MyAlbum.


(You can also press the Left/Right key to switch between the four icons.)

By default, the new picture is stored in the My Device\My Documents\My Album folder on the Pocket PC Phone in five seconds. The picture is stored in the JPEG format, and its filename starts with DSC00001 and goes on in the ascending order until the Pocket PC Phone is out of storage space.


4. 6. To view the picture you took, tap  to switch to MyAlbum. (See Chapter 14 for information on MyAlbum.)

Taking Continuous Pictures

VideoCam allows you to take continuous pictures. By default, VideoCam takes one single picture. Therefore, you need to change the setting first.


1. After you start VideoCam, tap  on the screen.
2. Tap **Camera**.
3. In **Shooting Mode**, select **Continuous Shooting** and tap **OK**.
4. Take pictures according to the procedure described in the “Taking a Picture” section earlier in this chapter.


After the pictures are captured, the screen displays the thumbnail view of these continuous pictures. The time interval for the continuous pictures is 0.7 second.

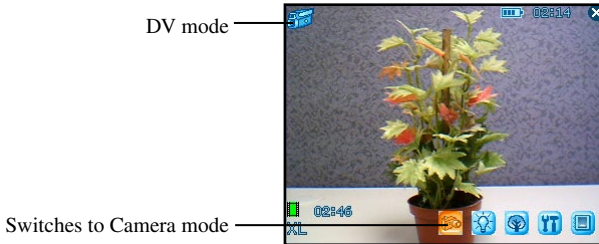
-  You cannot use the Record key in the Camera mode.
- You cannot use the Camera and DV features at the same time.

13.2 Using the DV

The VideoCam program also allows you to record videos.





1. Press the Capture key on the side of the Pocket PC Phone, or tap  **Programs > VideoCam**, to enter the Camera mode.
2. By default, the screen is displayed in the landscape mode.

Tap  to switch to the DV mode. You can use one hand to hold the Pocket PC Phone’s bottom for easy operations. Be careful not to let your fingers cover the camera lens.




3. Frame the subject to be photographed in the viewing window. When it is ready, press the Capture key on the side of the Pocket PC Phone to start recording. Press the Capture key again to stop recording.


The Pocket PC will preview the first picture of the video on the screen shortly. You can:

- Tap  to save the video and continue recording.
- Tap  to send the video in an e-mail.
- Tap  to delete the video.
- Tap  to switch to MyAlbum.

(You can also press the Left/Right key to switch between the four icons.)

By default, the new video is stored in the My Device\My Documents\My Album folder of the Pocket PC in five seconds. The video is stored in the MPEG4/3GP format, and its filename starts with DV00001 and goes on in the ascending order until the Pocket PC is out of storage space.

4. To view the video you recorded, tap  to switch to MyAlbum. (See Chapter 14 for information on MyAlbum.)

-  The DV mode indicator glows in orange when you using the DV feature.
- If you answer a call in the DV mode, then the video will be saved and VideoCam closed. If you reject the call, the screen will remain the same.

13.3 Changing VideoCam Settings

In the Camera/DV mode, you can tap  on the screen to access the setting items.

Standard Settings

On the Setting screen, tap **Standard**.



Item	Description
Backlight for Preview	Sets whether to turn on the backlight for picture/video preview.
Preview Image or Video	Sets whether to keep the preview for five seconds before the next shooting.
Glitter Frequency	While using VideoCam, please setup Glitter Frequency according to your environment for improving the preview quality of the VideoCam.

Camera Settings

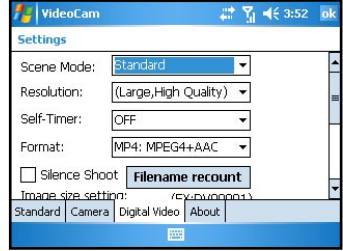
On the Setting screen, tap **Camera**.



Item	Description
Scene Mode	Selects the desired scene mode: Standard, Nightshot, Portrait, Grayscale, Sepia, or Document.
Resolution	Selects the desired image resolution: 1600*1280, 1280*1024, 640*480 (Normal), 320*240 (Basic), or 176*144 (Compact).
Self-Timer	Sets the time lag between releasing the shutter and shooting the picture. The options are 5 sec, 10 sec or 15 sec.
Flash	Turns on or off the flash.
White Balance	Changes the setting for white balance.
Shooting Mode	Selects the single or continuous shooting.
Filename recount	Resets the filename counter, starting from DSC00001.
Folder	Selects the storage location for the picture.

Digital Video Settings

On the Setting screen, tap **Digital Video**.



VideoCam

Item	Description
Scene Mode	Selects the desired scene mode: Standard, Nightshot, Grayscale or Sepia.
Resolution	Selects the desired image resolution: Large, High Quality; Large, Long Time; Small, High Quality; Small, Long Time.
Self-Timer	Sets the time lag between releasing the shutter and shooting the picture. The options are 5 sec, 10 sec or 15 sec.
Format	Selects the desired video format: MP4:MPEG4+ACC, MP4:MPEG4+AMR, 3GP:MPEG4+AMR, or 3GP:H.263+AMR.
Silence Shoot	Allows you to record only images without sounds.
Filename recount	Resets the filename counter, starting from DV00001.
Image size setting	Allows you to set the size limit for recorded videos.
Folder	Selects the storage location for the videos.

Chapter 14



Using MyAlbum

- 14.1 Starting MyAlbum
- 14.2 Opening a Picture or Video
- 14.3 Editing Pictures
- 14.4 Using the FaceMagic Feature
- 14.5 Using Effects
- 14.6 Sending Files
- 14.7 View Modes

14.1 Starting MyAlbum

The MyAlbum program is very useful for viewing picture and video files. The supported formats include: .bmp, .png, .jpeg, .gif, .3gp and .mpeg4.

To start MyAlbum, you can:

- Tap  > **Programs** > **MyAlbum**.
- Tap  in the Camera/DV mode.
- **Today plus** > **Media Content** > **Album**.

The startup screen of MyAlbum displays the file list.



The top of the screen displays the name of the current folder (the default setting is the My Device\My Document\My Album folder) and the sorting method (the default setting is Name). The middle of the screen displays the information about the picture: the preview of the pictures on the left; the filename, resolution, saving time, file format and file size on the right.



- You can tap **Edit** and **Menu** on the command bar for advanced features. See the later sections in the chapter.

14.2 Opening a Picture or Video







To have a closer view of a picture or video, tap the specific thumbnail view in the Report mode of MyAlbum.

Below is the screen of an opened picture:

Number of current file —  — Total number of files



In this mode, you can:

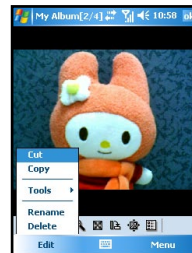
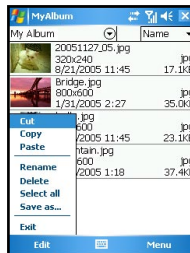
- Tap  or press the Left/Right key to browse for the previous/next file of the current folder.
- Tap  or press the Up/Down key to zoom in/out of the image.
- Tap  to zoom the picture to best fit the screen.
- Tap  to rotate the picture at 90 degrees.
- Tap  to switch to full screen.
- Tap  to return to the Report mode.



- You can tap **Edit** and **Menu** on the command bar for advanced features. See the later sections in the chapter.

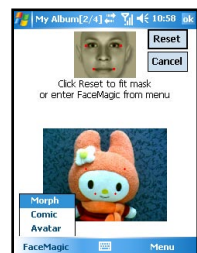
14.3 Editing Pictures

In the Report mode or opened picture mode, you can tap **Edit** on the command bar to cut, copy, paste, rename or delete the selected or opened file. You can also select all files, or save the selected file as a new file.

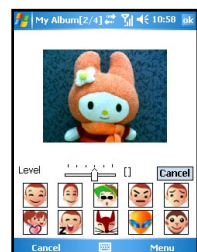


14.4 Using the FaceMagic Feature

Tapping **Menu > FaceMorph** on the command bar allows you to create special changes on the person's expression. On the positioning screen, tap **Reset**, and follow the screen tips to perform positioning on the person's face.



After positioning, tap **FaceMagic > Morph** (as an example). The screen displays the expression items and the adjustment bar for you to customize and create special effects. You can also tap **FaceMagic > Comic** or **Avatar** for more special expression effects.

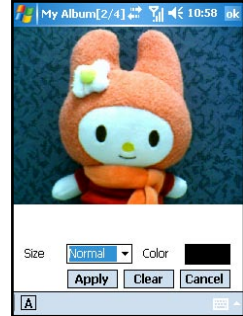


14.5 Using Effects

Tap **Effect** on the command bar to create special effects on the selected or opened picture. The picture with effects will be saved as a new file with “-1” added to the filename.

Painting

1. Tap **Menu > Effect > Painting**.
2. You can paint on the picture.
Or, tap **A** to add text on the picture. Tap the screen, and an editing cursor will appear. You can start to enter the texts and change the text's font, font size and color.
3. Press the OK key or tap OK to save the changes as a new file.



Effect

1. Tap **Menu > Effect > Effect**.
2. Tap the desired effect: Normal (📷), Black/White (🖼️), Sepia (📷), Emboss (📷), Blur (📷) or Mosaic (📷).
3. Press the OK key or tap OK to save the changes as a new file.
Selecting Normal (icon) will not save the picture as a new file.



Frame

1. Tap **Menu > Effect > Frame**.
2. Tap the desired picture frame from the option bar at the bottom of the screen. The screen will display the applied picture for viewing immediately. You can tap the arrows on both sides of the option bar for more frame options.
3. Press the OK key or tap OK to save the changes as a new file.



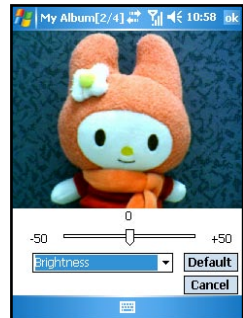
Stamp

1. Tap **Menu > Effect > Stamp**.
2. Tap the desired stamp from the option bar at the bottom of the screen. The screen will display the applied picture for viewing immediately. You can tap the arrows on both sides of the option bar for more stamp options.
3. Press the OK key or tap OK to save the changes as a new file.



Adjustment

1. Tap **Menu > Effect > Adjustment**.
2. Tap the list to select the item for adjustment: Brightness, Contrast, Saturation, Smart Color, Portrait, Landscape and Document.
3. Adjust the value by tapping and dragging on the adjustment bar.



Note

1. Tap **Menu > Effect > Note**.
2. You can enter note text in the box, or tap the recording button to create a recording as a note. The added text or recording will be saved as a stand-alone file.
3. Tap **OK** to save the note.
4. The note icon (📝) in the list mode indicates that a note has been added to the picture.



14.6 Sending Files

Tapping **Menu > Send** on the command bar allows you to send the file by:

- **MMS**
Send an MMS message including the selected picture.
- **E-Mail**
Send an email message including the selected picture.
- **Beam File**
Use the infrared or bluetooth to beam picture.

14.7 View Modes

MyAlbum provides four view modes for viewing picture and video files.

- Large mode
- Middle mode
- Small mode
- Report mode (default mode)

Chapter 15


More Programs

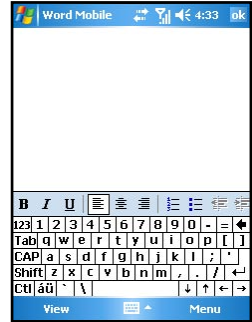
- 15.1 Word Mobile
- 15.2 Excel Mobile
- 15.3 PowerPoint Mobile
- 15.4 Windows Media Player
- 15.5 Pictures & Videos
- 15.6 MIDlet Manager
- 15.7 File Explorer
- 15.8 Calculator
- 15.9 Pocket MSN
- 15.10 IE Favorites
- 15.11 Media Content
- 15.12 SIM Contacts
- 15.13 Search
- 15.14 Games
- 15.15 Voice Commander
- 15.16 Profiles
- 15.17 SmartX

15.1 Word Mobile

You can create and edit documents and templates in Microsoft Word Mobile just as you do in Microsoft Word on your desktop computer.

Creating a Document


1. Tap  > **Programs** > **Word Mobile**.
2. Tap **New**. You'll see either a blank document or a template.
3. You can enter information by working in different modes, which you select from the **View** menu.
4. When you have finished entering the information and tap **OK**, the document is automatically saved. Word documents are usually saved as .psw files, but you can also save them in other file formats, such as .doc, .rtf or .txt.



Opening an Existing Document

In the document list, tap the document you want to open. If you don't see the document in the list, make sure you've chosen the correct folder in the folder list (labeled **All Folders** by default).


You can have only one document open at a time. When you open a second document, the first one is saved and closed automatically.

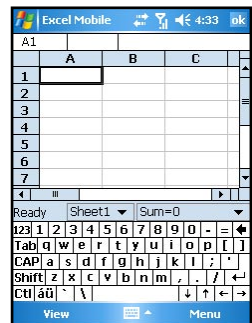
-  If you're opening a Word document that was created on a desktop computer, you may want to select **View** > **Wrap to Window** so that you can see the entire document.

15.2 Excel Mobile

You can create and edit workbooks and templates in Microsoft Excel Mobile just as you do in Microsoft Excel on your desktop computer.

Creating a Workbook

1. Tap  > **Programs** > **Excel Mobile**.
2. Tap **New**. You'll see either a blank workbook or template.
3. You can enter formulas and functions, and then filter data to see the subset of information.
4. When you have finished entering the information and tap **OK**, the document is automatically saved. Excel Mobile workbooks are usually saved as .pxl files, but you can also save them in .xls format.



Opening an Existing Workbook


In the workbook list, tap the file you want to open. If you don't see the workbook in the list, make sure you've chosen the correct folder in the folder list (labeled **All Folders** by default).



- You can open only one workbook at a time; when you open a second workbook, you will be asked to save the first.

15.3 PowerPoint Mobile

With PowerPoint Mobile, you can open and view slide show presentations created on your desktop computer. Whether the presentation is opened from an email message, downloaded from a file share or the Internet, copied to the Pocket PC Phone via a storage card, or obtained by synchronizing with your desktop computer, slide shows created in *.ppt and *.pps format with PowerPoint '97 and later can be viewed on your Pocket PC Phone. Note that PowerPoint Mobile is a viewer only.

Tap  > **Programs** > **Word Mobile**. In the presentation list, tap the presentation you want to open. If you don't see the presentation in the list, make sure you've chosen the correct folder in the folder list (labeled **All Folders** by default).




15.4 Windows Media Player

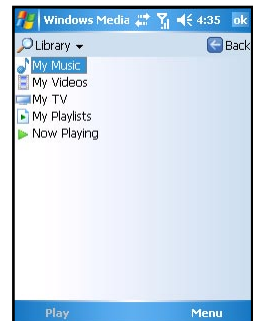
Use Microsoft® Windows Media® Player 10 Mobile for Pocket PC Phone to play digital audio and video files that are stored on your device or on the Web.

By default, Windows Media Player can play Windows Media or MP3 files (including files with the extensions .asf, .wma, .wmv, .mp3).

Starting Windows Media Player

To start Windows Media Player, tap  > **Windows Media**.

By default, Windows Media Player displays the Library screen as the startup screen after the Pocket PC Phone is turned on.



Screens and Menus

Windows Media Player has three primary screens:

- **Playback screen**

The screen that displays the playback controls (such as Play, Pause, Next, Previous, and Volume), the album art window, and the video window. You can change the appearance of this screen by choosing a different skin.

- **Now Playing screen**

The screen that displays the Now Playing playlist. This special playlist indicates the currently playing file and any files that are “queued up” to play next.

- **Library screen**

The screen that lets you quickly find your audio files, video files, and playlists. It contains categories such as My Music, My Video, My TV, and My Playlists.

At the bottom of each screen is Menu. The commands on this menu change depending upon which screen you are viewing.

- **Playback screen menu**

Item	Description
Play/Pause	Starts or pauses playback.
Repeat	Plays the items in the Now Playing playlist repeatedly.
Stop	Stops playback.
Full Screen	When a video is playing, displays it by using the entire screen.
Library	Displays the Library screen so you can choose a file to play.
Open URL	Lets you play a file on a network, such as the Internet.
Options	Lets you adjust various Windows Media Player options, including network, skin, and hardware button options. (See the “Changing Windows Media Player Settings” section later in the chapter.)
Properties	Displays information about the currently playing file.
About	Displays information about Windows Media Player, such as the version number.

- **Now Playing screen menu**

Item	Description
Library	Displays the Library screen so you can choose a file to play.
Move Up	Moves the selected item up in the playlist order.
Move Down	Moves the selected item down in the playlist order.
Delete from Playlist	Deletes the selected item from the playlist.
Clear Now Playing	Deletes all items from the Now Playing playlist.
Error Details	Displays error information about the selected item (an exclamation mark appears before the item name if error details are available).
Properties	Displays information about the selected file.

■ Library screen menu

Item	Description
Queue Up	Adds the selected item to the end of the current (Now Playing) playlist.
Delete from Library	Deletes the selected item from the library.
Update Library	Adds new items to the library by searching your device or storage card.
Open File	Lets you find and play files that are stored on your device or storage card but that are not in the library.
Properties	Displays information about the selected file.

Libraries

The library contains links to your audio files, video files, and playlists. As in the desktop Player, you will be allowed to sort your content by criteria such as artist name, album title, genre, or actor.

Unlike the desktop Player, the Pocket PC Phone Player can have multiple libraries. Each library represents an available storage location. For example, if you store some content in the internal storage location on the device (known as random access memory or RAM), the My Device library will contain links to those files.

If you also store content on removable storage cards, you will have additional libraries for each of those cards.

On the Library screen, you can switch between the My Device library and any other libraries that are available to your device.


By default, Windows Media Player automatically searches the internal storage location of your device for compatible digital media files. If it finds any, they will be added to the My Device library.

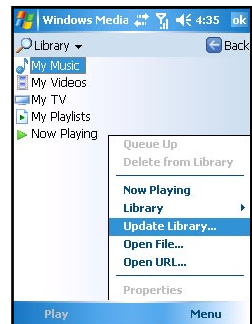
Similarly, when you insert a removable storage card into your device, Windows Media Player automatically searches it for content and adds it to a Storage Card library.

If the Player does not detect new files that you copy to your device, you can manually update the library by using the Update Library command.

Updating a Library

In most cases, Windows Media Player automatically updates your libraries as necessary. However, you can manually update a library to ensure that it has links to any new files that you might have recently copied to your Pocket PC Phone or a removable storage card.


1. Tap  > **Windows Media**.
2. If you are not already on the Library screen, tap **Menu** > **Library**.
3. On the Library screen, tap the Library arrow (near the top of the screen), and then tap the library that you want to update (for example, Storage Card).
4. Tap **Menu** > **Update Library**.
5. Tap **Search**, wait for the files to be added, and then tap **Done**.

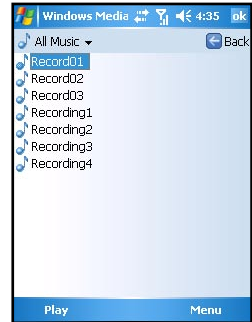


Playback

Playing Items on Your Pocket PC Phone

Use the library to find and play songs, videos, and playlists that are stored on your Pocket PC Phone or removable storage card.

1. Tap  > **Windows Media**.
2. If you are not already on the Library screen, tap **Menu** > **Library**.
3. On the Library screen, tap the Library arrow (near the top of the screen), and then tap the library that you want to update (for example, Storage Card).
4. Tap a category (for example, My Music or My Playlists), tap and hold the item that you want to play (such as a song, album, or artist name), and then tap **Play** or **Queue Up**.














5. Tap **Play** to start playing back the selected file.



- To play a file stored on your device but that is not in a library, on the Library screen, tap **Menu** > **Open File**. Tap and hold the item that you want to play (such as a file or a folder), and then tap **Play** or **Queue Up**.


Controls

Item	Description
	Plays a file.
	Pauses a file.
	Skips to the beginning of the current file or to the previous file.
	Skips to the next file.
	Adjusts the playback progress of a selected file.
	Increases the volume level.
	Decreases the volume level.

Item	Description
	Turns the sound on or off.
	Displays a video by using the entire screen (full screen).
	Displays a Web site, such as WindowsMedia.com, where you can find music and videos to play.
	If your device hardware supports it, you can rewind and fast-forward files by pressing and holding the Left/Right controls.

Playing an Item on a Network

Use the Open URL command to play a song or video that is stored on the Internet or on a network server.

1. Tap  > **Programs** > **Windows Media**.
2. If you are not on the Playback screen, tap **OK** to close the current screen and display the Playback screen.
3. Tap **Menu** > **Open URL**.
4. In the URL box, enter a network address. Or, in the History box, tap a URL that you have previously used.



- To play an item on a network, the phone must be connected to a network. For more information on creating a remote connection between your portable device and a network, see Chapter 8.

Playlists

A playlist is a list of digital media files that play in a specified order. By using the playlist, you can group audio and video files together for convenient playback.

For example, in the desktop Player, you can create a playlist of upbeat songs to listen to when you exercise or a playlist of soothing songs to enjoy during a long flight. When you synchronize with the desktop version of Windows Media Player 10, your favorite playlists are automatically copied to your Pocket PC Phone.

Your playlists are available in the library (in the My Playlists category). A temporary playlist, called Now Playing, is available from the Now Playing menu. It lists the currently playing file, as well as any files that have been “queued up” to play next.

Synchronization

Use the Sync feature in the desktop version of Windows Media Player 10 to automatically copy your favorite audio files, video files, and playlists from your desktop Player library to your Pocket PC Phone library every time you connect your Pocket PC Phone to your computer.

For more information on synchronization, see the Windows Media Player Help on the desktop computer.

Copying Files to Your Pocket PC Phone

Use the desktop version of Windows Media Player 10 to synchronize digital media files to your Pocket PC Phone (instead of dragging a file from a folder on your desktop computer to a folder on your Pocket PC Phone, for example). Using the desktop Player ensures that licenses are copied with protected files.

For more information on copying files to your Pocket PC Phone, see the Windows Media Player Help on the desktop computer.

Licenses and Protected Files

Protected files are digital media files that are secured with a license to prevent unauthorized distribution or playback.

The license specifies how you can use the file. For example, a license can specify how many times you can play a file. A license can also specify whether you can burn the file to a CD or synchronize (copy) the file to a portable device.

The terms of the license are specified by the person or company that provided the file. Most people obtain protected files from online stores, such as MSN Music and Napster.

When copying a protected file from your computer to your Pocket PC Phone, always use the desktop version of Windows Media Player 10 to synchronize (copy) the file to your Pocket PC Phone. For example, do not use Windows Explorer to drag and drop files from your computer to your Pocket PC Phone.

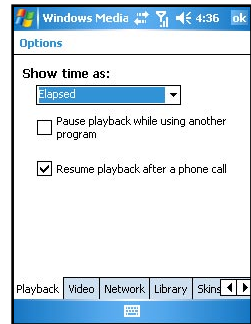
For more information on copying files to your Pocket PC Phone, see the Windows Media Player Help on the desktop computer.



- You can view the protection status for a file by checking its file properties (**Menu > Properties**).

Changing Windows Media Player Settings

- Tap **Programs > Windows Media**.
- If you are not on the Playback screen, tap **OK** to close the current screen and display the Playback screen.
- Tap **Menu > Options** to customize Windows Media Player settings.






Item	Description
Change player appearance	Tap Skins . Tap Previous or Next until you find the skin that you want to use.
Shrink oversized video	Tap Audio/Video . Select the Shrink to fit window check box.
Play video in full screen	Tap Audio/Video . In Play video in full screen , select the desired option.
Change background playback	Tap Playback . Select or clear the Pause playback while using another program check box.
Change how time is displayed	Tap Playback . In the Show time as box, select the desired option.
Change playback after a phone call	Tap Playback . Select or clear the Resume playback after a phone call check box.
Change network connection speed	Tap Network . In the Internet Connection Speed box, tap the speed of your network connection.

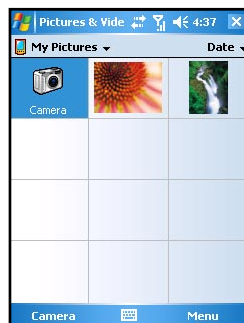
Item	Description
Change network protocol options	Tap Network . In Protocol , select the check box for each protocol you want to enable.
Change the startup screen	Tap Library . Select the Start Player on Library screen check box to show the Library screen when you start Windows Media Player. Clear the Start Player on Library screen check box to show the Playback screen when you start Windows Media Player.

15.5 Pictures & Videos

Use Pictures & Videos to view pictures or videos stored on your device or on a storage card, send pictures or videos to others, view a slideshow of your pictures, or set a picture as the background on the Today screen.


Viewing Pictures and Videos

1. You can copy pictures or videos from your desktop computer to the My Pictures folder, within the My Documents folder on your Pocket PC Phone. For more information on copying files from your desktop computer to your Pocket PC Phone, see ActiveSync Help on your desktop computer.
2. To view pictures or videos in a storage card, insert the card.
3. Tap  > **Programs** > **Pictures & Videos**.
4. By default, the program displays thumbnails of the pictures and videos in the My Pictures folder, within the My Documents folder on your Pocket PC Phone. To view the pictures and videos in a storage card, tap the  icon. To view pictures and videos on the Pocket PC Phone, tap the  icon.
5. Thumbnails of pictures and videos appear on the screen. You can tap one of them to view the picture in full screen.





Sending Pictures and Videos

You can send a .jpg picture to others as an email attachment. The picture is resized to approximately 30 KB, making it easier to send over wireless connections.


1. Tap  > **Programs** > **Pictures & Videos**.
2. Tap the picture you want to send as an email attachment.
3. Tap **Tools** > **Send** via Email to create an email message with the picture attached.

Slideshow of Pictures

You can view your pictures as a slideshow on your device. Pictures & Videos will display slides of the pictures shown in thumbnail view with 5-second intervals between slides.


1. Tap  > **Programs** > **Pictures & Videos**.
2. Tap the  icon to view pictures as a slideshow.
3. Tap anywhere on the screen to display the Slideshow toolbar, which you can use to pause the slideshow, rotate the view, and more.

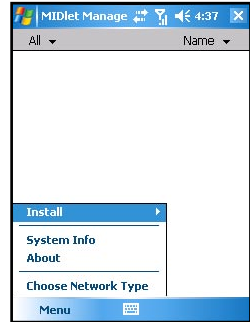
Setting a Picture as Background

1. Tap  > **Programs** > **Pictures & Videos**.
2. Tap the picture you want to set as the background.
3. Tap **Tools** > **Set as Today Wallpaper**.

15.6 Java


Java is a programming environment targeting various applications running on mobile devices, such as games and useful applets. Downloading Java applications may be charged or free of charge. For free Java applications, download them from the Internet or WAP sites. For charged Java applications, consult your mobile phone service provider for purchase. To use Java, you need to subscribe to the GPRS or LAN service from your mobile phone service provider, and make sure that you have set up the GPRS or WLAN connection on the Pocket PC Phone.

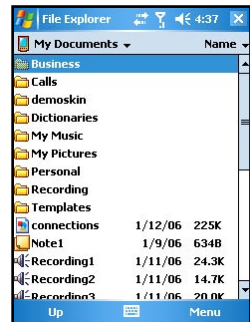
You can use the Java program to download Java games or applications. Tap  > **Programs** > **Java**.



15.7 File Explorer

File Explorer allows you to explore and manage the folders and files stored on the Pocket PC Phone or storage card.


1. Tap  > **Programs** > **File Explorer**.
2. Tap the folder list (labeled **My Documents** by default) and then the folder that you want to view.
3. To open an item, tap it.
4. To quickly delete, rename, copy, or move an item, tap and hold. Then, on the pop-up menu, tap **Copy**, **Delete**, or **Rename**.

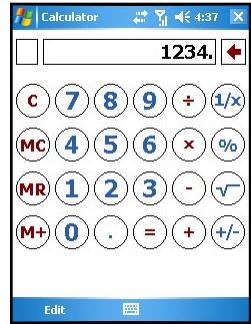


- To select multiple items, tap and drag.

15.8 Calculator

You can use Calculator to perform any of the standard operations for which you would normally use a handheld calculator.

1. Tap  > **Programs** > **Calculator**.
2. Use the Calculator buttons or the input panel to enter numbers and perform calculations.
 - To clear the current calculation or the displayed number, tap **C**.
 - To clear the last digit entered in a multidigit entry, tap the arrow to the right of the entry box.
 - To clear memory, tap **MC**.



15.9 Pocket MSN

Pocket MSN on your Pocket PC Phone provides practically instant access to your up-to-date MSN Hotmail Inbox, your MSN Messenger Contacts list, and options for customizing your Pocket MSN experience.

You need to connect the Pocket PC Phone to the Internet to access the Pocket MSN web site. (See information in Chapter 8.)

Sign in to Pocket MSN

The sign-in process helps to maintain secure access to your MSN Hotmail and MSN Messenger accounts.

1. To sign in to Pocket MSN, go to the Today screen, and then tap **Tap here to sign in to Pocket MSN**.
2. Type the e-mail address and password you use to sign in to MSN Mobile.
3. Tap **Sign in**.

MSN Messenger

MSN Messenger on your mobile device provides the same chat environment as MSN Messenger on your desktop computer. These features include:

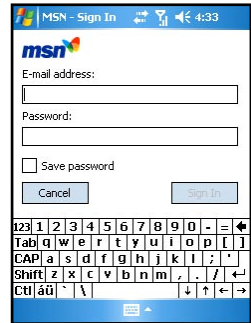
- Seeing who is online.
- Sending and receiving instant messages.
- Having an instant message conversation with a group of contacts.
- Telling contacts that you are unavailable.
- Blocking contacts from seeing your status or sending you messages.

Setting Up an Account

Before you can use MSN Messenger, you must set up the instant messaging account(s) to use. For MSN Messenger Service, you must have a Microsoft Passport or Hotmail account. For Exchange Instant Messaging, you must have an Exchange account.

To set up a Microsoft Passport account, go to <http://www.passport.com>. To set up a Hotmail account, go to <http://www.hotmail.com>. To set up an Exchange account, see your network administrator.

1. Create a connection for your Pocket PC Phone. (See Chapter 8 for more information.)
2. In MSN Messenger, tap **Menu > Options > Messenger**.
3. Select **Enable MSN Messenger Service**. Your sign-in name and password are established the first time you sign in to Pocket MSN.
4. Select **Enable MSN Messenger Service** and/or **Enable Exchange Instant Messaging**.
5. If necessary, select which account to sign in to first, under **Sign in using this account first**.



Signing In and Out

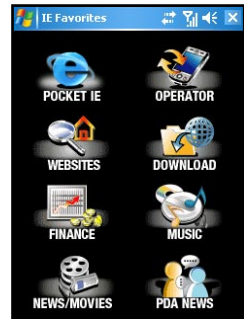
1. Tap **Start > Programs > MSN Messenger**.
2. To sign in, tap anywhere on the screen. Follow the directions on the screen.
3. To sign out, tap **Menu > Sign out**.

15.10 IE Favorites

Tap Start>Programs>IE Favorites to access the IE Favorites main page.

IE Favorites provides several categories of links for quick access.

- POCKET IE
- WEBSITES
- FINANCE
- NEWS/MOVIES
- OPERATOR
- DOWNLOAD
- MUSIC
- PDA NEWS



15.11 Media Content

To access Media Content, tap Today Plus on the Today screen, and then tap the Media Content icon. Media Content includes Music, Album, Media Player, Java and Wallpaper items.

The main page of Media Content is shown to the right.



Media Content Items

Music

On the main page of Media Content, tap **Music** to quickly access the contents in the My Device\My Documents\My Music folder.

Tap the desired item for playback. Your Pocket PC Phone will use Windows Media Player to play the selected item.

For information on Windows Media Player, see Section 15.5.



Album

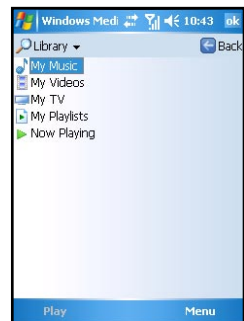
On the main page of Media Content, tap **Album** to quickly start MyAlbum.

For information on MyAlbum, see Chapter 14.

Media Player

On the main page of Media Content, tap **Media Player** to quickly start Windows Media Player.

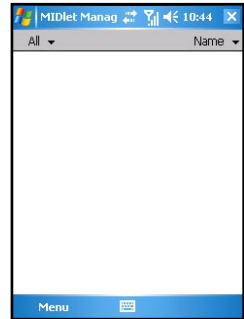
For information on Windows Media Player, see Section 15.5.



Java

On the main page of Media Content, tap **Java** to quickly start the Java program.

For information on Java, see Section 15.7.



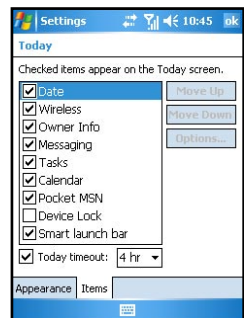
Wallpaper

On the main page of Media Content, tap **Wallpaper** to quickly access the setting items of the Today screen.

- Tap **Appearance** to change the theme picture of the Today screen.




- Tap **Items** to set the items to be displayed on the Today screen. You can also set the time for the Pocket PC Phone to automatically return to the Today screen after a period of inactivity (4 hours by default).



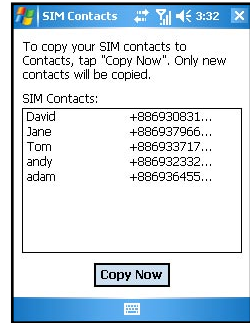
For information on Settings, see Chapter 6.

15.12 SIM Contacts

On your Pocket PC Phone, there can be two kinds of independent contact lists. One is stored in the Pocket PC Phone's memory by Microsoft Contacts; the other is stored in the SIM card. By default, you can use Contacts to load the contact information stored in the Pocket PC Phone's memory (see Chapter 4 for information on Contacts), and use SIM Contacts to load the contact information stored in the SIM card.


Tap  > **Programs** > **SIM Contacts**. When running SIM Contacts for the first time after turning the Pocket PC Phone on, it may take a few minutes to load the contact information.

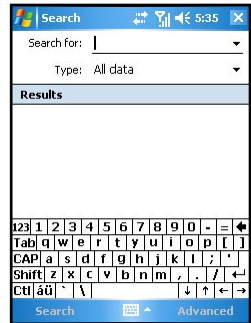
After the loading is completed, you can tap **Copy Now** to copy your contacts to Contacts.



15.13 Search

The Search feature on your Pocket PC Phone helps you quickly locate information.


1. Tap  > **Programs** > **Search**.
2. Enter the text you want to find, and select a data type.
3. Tap **Search** to start the search.
4. Tap the desired item to open on the result list.

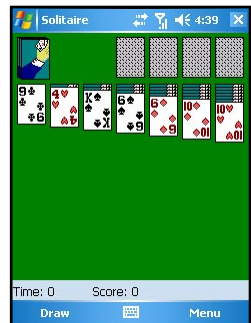


15.14 Games

Solitaire

The object of Solitaire is to use all the cards in the deck to build up the four suit stacks in ascending order, beginning with the aces.

1. To open Solitaire, tap  > **Programs** > **Games** > **Solitaire**.
2. A new game is started. You can also tap **Menu** > **New Game** on the command bar to start a new game.

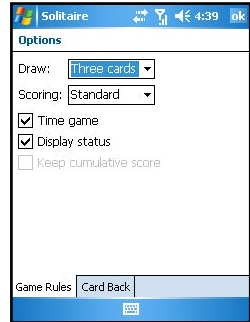


3. You can:

- To move a card to one of the stacks, drag the card. Build the row stacks in descending order, from king to two, alternating between red and black cards.
- To display cards in the upper-left stack, tap the stack.
- In the row stacks, turn a card face-up by tapping it. You can move a king to an empty row stack.
- To undo a move, tap **Menu > Undo**.

Setting Solitaire Options

To change the setting options, tap **Menu > Options**.



■ Game Rules

- **Draw** selects one card or three cards for each draw.
- **Scoring** selects the Standard or Vegas scoring system, or no scoring.
- **Time game** enables the timing function.
- **Display status** shows the elapsed time and scores of games.
- **Keep cumulative score** keeps a cumulative score when using the Vegas scoring system.

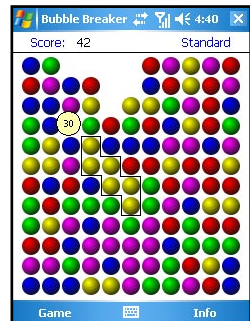
■ Card Back

You can select a desired card back.

Bubble Breaker

To play Bubble Breaker, you need to align similar bubbles in order to form large blocks of bubbles before bursting them. The more bubbles in the block before they are burst, the greater number of points you will receive.

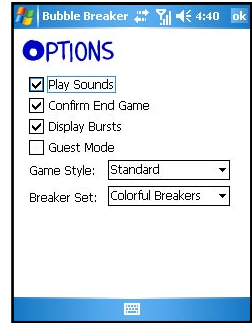
1. To open Bubble Breaker, tap > **Programs > Games > Bubble Breaker**.
2. Tap a bubble that is connected to other similar bubbles. Those connected bubbles (at least two bubbles) will be highlighted, and a new bubble will pop up displaying that block's potential bubble points.
3. Tap on your selection again in order to burst the bubbles. All bubbles above your burst block will now fall down.
To take back the last move you have made, tap the icon.
4. To start a new game, tap **Games > New Game**.
5. To view the statistics, tap **Info > Statistics**.



Setting Bubble Breaker Options

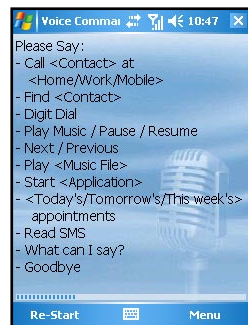
To change the setting options, tap **Game > Options**.

- **Play Sounds** sets whether or not you want Bubble Breaker to make sounds.
- **Confirm End Game** sets Bubble Breaker to pop up a confirmation dialog when the “End Game” menu item is selected.
- **Display Burst** sets to display the burst of bubbles or not.
- **Guest Mode** plays the game without affecting the statistics
- **Game Style** selects one of the following game styles.
 - **Standard** The default mode of play where there is a set number of bubble that will not increase.
 - **Continuous** In this style, whenever a vertical set of bubbles has been burst and the remaining bubbles have shifted over to the right, a new randomly selected column of bubbles will pop up on the left, thereby allowing a game to be played for an extended amount of time.
 - **Shifter** In this style, when a set of bubbles has been burst, all remaining bubbles to the top and left will shift down and to the right.
 - **MegaShift** This style is a combination of the shifter and continuous styles in that bubbles will shift down and to the right while empty columns will fill on the left.
- **Breaker set** changes the color of the bubbles.



15.15 Voice Commander

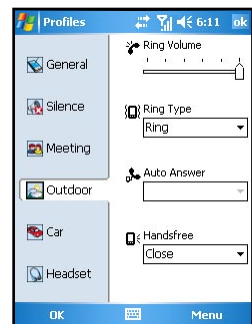
According to the command instructions, users may activate applications, dial phone numbers, and inquire contacts or conferences, etc., by voice commander.



15.16 Profiles

Profiles allows you to select a desired ring tone setting that suits your need.

The available Profiles options include: General, Silence, Meeting, Outdoor, Car and Headset.



15.17 SmartX

Your Pocket PC Phone has a smart close (SmartX) function to quickly close running programs.

Tap and hold on the top-right corner of the screen to display the SmartX menu.

By default, the SmartX menu displays the following items:

- **Close** closes the current program.
 - **Minimize** minimizes the current program.
 - **Close All** closes all running programs.
 - **Close Inactive** closes inactive programs.
 - **[program name]** displays the running program(s).
 - **Settings** displays the SmartX settings.
- By default, the SmartX function is enabled. You can clear the **Enable Smart Close function** item to disable the SmartX function.



You can customize the displayed items on the SmartX menu. The items for selection include:

- **Auto close**
- **Close All**
- **Close Inactive**
- **Running Program**
- **Rotate screen left** (disabled by default)
- **Rotate screen right** (disabled by default)
- **Settings**

Chapter 16

Troubleshooting

- 16.1 Resetting the Pocket PC Phone
- 16.2 Restoring Factory Defaults
- 16.3 Power Problems
- 16.4 Memory Problems
- 16.5 Screen Problems
- 16.6 Connection Problems
- 16.7 Hardware Problems
- 16.8 Software Problems
- 16.9 Other Problems

16.1 Resetting the Pocket PC Phone

Occasionally, you may need to reset your Pocket PC Phone when your Pocket PC Phone stops responding (it appears to be “frozen” or “locked up”).

1. Remove the miniSD card (if installed).
2. Use the stylus to press the Reset button on the rear of your Pocket PC Phone.

16.2 Restoring Factory Defaults

In some cases, you may need to restore your Pocket PC Phone to the factory default state by clearing the memory of your Pocket PC Phone. For example, you should clear the memory:

- When your Pocket PC Phone cannot be powered on, even if you remove and then re-install the battery.
- When you forget your password.
- When you want to remove the additional programs that you installed by yourself.

Before clearing the Pocket PC Phone memory and restoring the factory default state, make sure that you have copied your data to the desktop computer or miniSD card.


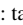



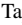


- Pressing the Power key, Reset button and Call button at the same time will restore the factory defaults, and clear the data and programs in the memory. You need to reinstall the additional programs.



16.3 Power Problems

Problem	Solution
The device cannot be powered on when using battery power.	The remaining battery power may be too low to run your SP70. Connect the AC charger to your SP70 and to external AC power. Then, turn on your SP70.
Battery runs out of power quickly.	You might be using your SP70 in a manner that drains power quickly. Use SP70 with the AC adaptor.
SP70 keeps showing the low battery power messages.	Make sure SP70 is fully charged. In such cases, backup your data via Activesync, restore the device to the factory default state (see Section 16.1), and then fully charge the device. If the problem persists, send your SP70 to the authorized dealer for inspection.
Battery does not work correctly.	When the battery fails to charge and discharge, and it is not man-made damage and still in the warranty period, send it to the authorized dealer for replacement.


16.4 Memory Problems

Problem	Solution
SP70 sends out warnings of insufficient memory.	<p>Please perform the following:</p> <ul style="list-style-type: none"> ■ Delete files that you no longer need: tap  > Programs > File Explorer. ■ Delete programs that you no longer need: tap  > Settings > System > Remove Programs. ■ Delete all files and history in Internet Explorer: tap  > Programs > Internet Explorer > Menu > Tools > Options > Memory. ■ Stop running programs: tap  > Settings > System > Memory > Running Programs; or tap  on the Today screen. ■ Save data to a miniSD card.
How to find out the memory capacity after resetting?.	Tap  > Settings > System > Memory > Main .

16.5 Screen Problems

Problem	Solution
Screen is off.	<ul style="list-style-type: none"> ■ Connect the AC charger to your device and to external AC power. ■ Remove the battery and then reinstall it.
Screen responds slowly.	<ul style="list-style-type: none"> ■ The battery power may be low. Connect the AC charger to your device and to external AC power. ■ Probably too many programs are in use. Stop the running programs: tap  > Settings > System > Memory > Running Programs.
Screen is not clear or is hard to read.	<ul style="list-style-type: none"> ■ Turn on the backlight of the display. ■ Move to a location with enough light.
Inaccurate response to stylus taps.	<ul style="list-style-type: none"> ■ Realign the touch panel: tap  > Settings > System > Screen > Align Screen. ■ If there's a screen protective film supplied, please apply it firmly and properly on the screen.

16.6 Connection Problems


Problem	Solution
Synchronization with the desktop computer fails.	<ul style="list-style-type: none"> ■ Make sure that you have installed the correct version of ActiveSync on your desktop computer. ActiveSync version 4.1 or later is recommended. ■ Make sure that the cable connection is correct. ■ Disconnect and then re-connect the cable. ■ Remove the driver for SP70 and ActiveSync on the desktop computer, and then reinstall them. Do not connect the cable during ActiveSync installation.
Using infrared to beam information fails.	<ul style="list-style-type: none"> ■ Transfer only one file, or no more than 25 contact cards, at a time. ■ When using IR, make sure nothing is between the two IR ports. ■ Adjust the room lighting or move to another location (some types of light interfere with beaming).
Network connection is not working properly.	<ul style="list-style-type: none"> ■ Make sure the network connection settings are correct: tap  > Settings > Connections > Connections. ■ Consult the network administrator if the user name and password are correct.

Problem	Solution
Connection to the desktop computer automatically disconnects.	Disconnect the USB cable from the desktop computer, and then re-connect it. Allow the desktop computer to find SP70 again. If the network is still automatically disconnected, send SP70 to an authorized dealer for inspection. If necessary, the dealer will update the firmware of SP70 for you. Make sure to back up your data first because updating firmware will restore the factory default state.
The device cannot receive various beamed information from other devices via infrared. Only contact information and picture exchange could work.	Infrared information exchange is mainly for contact information exchange with other mobile devices. Currently, most traditional mobile phones could only exchange contact information and group pictures. The resources and compatibility of information exchange with SP70 is still limited. However, regarding data sharing and program installation, you can still make use of the connection to the desktop computer.
When the wireless network is unavailable	<ul style="list-style-type: none"> ■ Please make sure the wireless network is enabled. ■ Check whether there's any wireless network available and ensure messages are transmitted correctly.
When Bluetooth is not recognized	Please ensure both identification codes are correct.

16.7 Hardware Problems

Problem	Solution
What is the CPU and memory of SP70?	The CPU of your device is ARM iMX21 350MHz, with memory containing 128MB RAM.
How to clean the camera lens?	There is an acrylic material protecting the camera lens inside. Therefore, you only need to clean the external acrylic material.
What miniSD cards are compatible with SP70?	SP70 supports miniSD cards manufactured by SanDisk, KingMAX, Transcend, A-DaTa, and so on.
The infrared information exchange only applies to contact information and picture receipt?	Infrared information exchange is mainly for contact information exchange with other mobile devices. Currently, most traditional mobile phones could only exchange contact information and group pictures. The resources and compatibility of information exchange with SP70 is still limited. SP70 may often connect to the desktop computer using the USB cable for data sharing and program installation. Due to the above fact, the USB cable is supplied as a standard accessory for your use.

16.8 Software Problems

Problem	Solution
Is there a limit for assigning ring tone groups?	No, there is no such limit on your SP70.
Does SP70 support Java and Bluetooth?	<ol style="list-style-type: none"> 1. Yes, Java (MIDP 2.0) is supported. 2. Yes, the device supports Bluetooth.
How to play back MPEG files from desktop computer on SP70?	To play back MPEG files from the desktop computer, you need to use Microsoft codecs to transfer them for playback on SP70.
How to use key words to find a contact?	Take "John" for example: enter John .
Cannot log in to MSN Messenger from SP70?	If your device is not updated since October 15, 2003, you will need to update your device and MSN Messenger. Connect to Microsoft Web site for updates. After updating, press the Reset button to complete the update procedure. Then restart SP70 and log in to MSN Messenger.
How to copy MP3 files to SP70?	You can copy files from the desktop computer to your SP70 using ActiveSync or Card Reader. See ActiveSync Help on the desktop computer.
How to set up the GPRS configuration on SP70?	Tap  > Settings > Connections > GPRS Auto Configuration . Select Auto Configuration , select your mobile phone service provider, and then tap OK .
Why is it not working to copy data and MP3 files from the supplied miniSD card to a newly-purchased miniSD card?	You cannot copy files between two miniSD cards. Follow this procedure: <ol style="list-style-type: none"> 1. Format the new card. 2. Install ActiveSync using the supplied CD on the desktop computer. 3. Use ActiveSync to copy files from the supplied miniSD card to the desktop computer, and then copy those files from the desktop computer to the new card.
Some MP3 files cannot play back on SP70.	Your SP70 supports the standard MP3 format only. You need to purchase an audio format transfer program to transfer files using non-standard codecs.
SP70 can send but cannot receive text messages.	There may be too many text messages stored in SP70. Clear the non using text messages in SP70 for receiving new text messages.
How does SP70 connect to the Internet via the desktop computer?	Connect to the desktop computer using the USB cable. In ActiveSync on the desktop computer, click File > Connection Settings > This computer connects to , and change the connection to Internet.
Failure occurs during program installation on SP70.	The possible reasons are: <ol style="list-style-type: none"> 1. There is not enough memory. Delete the programs you no longer need. 2. There are some running programs.

Problem	Solution
SP70 cannot switch to the GSM mode from the flight mode.	After switching to the flight mode, wait for 20 seconds to one minute before switching back to the GSM mode.
Can I save the text messages and contact information to a miniSD card?	Due to the limits of the operating system, you cannot save the text messages and contact information to a miniSD card.
Why can't I zoom in/out and change brightness when using the camera feature?	Please close the VideoCam application, and check if the zoom in/out keys and navigation keys are working normally. Note that the zoom in/out function is not available in DV mode.

16.9 Other Problems

Problem	Solution
Some peripheral devices are not compatible with SP70.	Your SP70 uses the new Windows Mobile Version 5.0 operating system. The drivers of some peripheral devices may not support the operating system. Contact the dealers of the peripheral devices to see if they can provide drivers supporting the operating system.
The programs are missing after removing the battery.	When you remove the battery for over five minutes or reset SP70, it will restore the factory default state. All data stored in the memory will be erased. You are strongly recommended to back up your data regularly.
SP70 is broken, and I cannot access the data.	If SP70 is broken and unable to restart, you have to restore it to the factory default state and all unsaved data will be lost. To protect the data on your SP70 (including all files, system settings and additional programs), we strongly recommend you to back up your data regularly.
SP70 retains the contact information from the old SIM card after changing the SIM card.	SP70 loads the contact information from the SIM card to SP70. When changing the SIM card, SP70 will compare the contact information of the new SIM card with the old one, and then remove the old information. Wait for about two minutes for the comparison and deletion to complete. Otherwise, the old contact information may not be deleted. In this case, insert another SIM card into SP70. Turn the Pocet PC Phone on and wait for two minutes for SP70 to load and update the contact information. Then replace the old SIM card and wait for two minutes for SP70 to delete old contact information completely.

Chapter 17

Appendix

17.1 European Declaration of Conformity

17.1 European Declaration of Conformity

Products with the CE marking comply with Radio & Telecommunication Terminal Equipment Directive (R&TTE) (1995/5/EEC), the Electromagnetic Compatibility Directive (89/336/EEC) and the Low Voltage Directive (73/23/EEC) issued by the Commission of the European Community.

Compliance with these directives implies conformity to the following European Standards:

- EN 60950 (IEC 60950)
Safety of information technology equipment.
- ETSI EN 301 511
Candidate Harmonized European Standard (Telecommunications series) Global System for Mobile communications (GSM); Harmonized standard for mobile stations in the GSM 900 and DCS 1800 bands covering essential requirements under article 3.2 of the R&TTE directive (1999/5/EC).
- ETSI EN 301 489-1
Electronic compatibility and Radio spectrum Matters, ElectroMagnetic Compatibility (Common technical requirements); Part 1: Common Technical Requirements.
- ETSI EN 301 489-7
Electro Magnetic Compatibility and Radio spectrum Matters (ERM); Electro Magnetic Compatibility (EMC) standard for radio equipment and services; Part 7: Specific conditions for mobile and portable radio and ancillary equipment of digital cellular radio telecommunications systems (GSM and DCS).
- ETSI EN 301 489-17
Electronic compatibility and Radio spectrum Matters, ElectroMagnetic Compatibility (Specific conditions for Wideband data and HIPERLAN equipment); Part 17: Specific Requirements for Wideband Data and Hyperlan.
- ETSI EN 300 328
Electronic compatibility and Radio spectrum Matters, Wideband Transmission system; Data transmission equipment operating in the 2.4GHz ISM band and using spread spectrum modulation techniques.
- GSM11.10
- EN50360, EN50361 for SAR
Specific Absorption Rate (SAR).

According to the testing standards of the Directorate General of Telecommunications (DGT) of the Ministry of Transportation and Communications (MOTC), this product has passed the following tests:

1. PLMN01 GSM900 and DCS1800 Mobile Equipment Technical Specifications.
2. CN13438 Limits and Methods of Measurement of Radio Interference Characteristics of Information Technology Equipment.
3. SAR (GPRS:900/1800MHz) (OET65) Specific Absorption Rate (SAR) Test.
4. SAFETY LVD/EN60950 Safety of Information Technology Equipment.
5. RTTE01 2.4GHz Radio-frequency Telecommunications Terminal Equipment Technical Specifications.

The SAR limit set by the FCC is 1.6W/kg; the highest SAR value for this product is 0.235W/Kg @10g.

WARNING: To reduce the influences of the radio waves, please use this product carefully and properly.

This product meets the government's requirements for exposure to radio waves.

FCC Regulations:

- This device complies with part 15 of the FCC Rules. Operation is subject to the following two conditions: (1) This device may not cause harmful interference, and (2) this device must accept any interference received, including interference that may cause undesired operation.

- This device has been tested and found to comply with the limits for a Class B digital device, pursuant to Part 15 of the FCC Rules. These limits are designed to provide reasonable protection against harmful interference in a residential installation. This equipment generates, uses and can radiate radio frequency energy and, if not installed and used in accordance with the instructions, may cause harmful interference to radio communications. However, there is no guarantee that interference will not occur in a particular installation. If this equipment does cause harmful interference to radio or television reception, which can be determined by turning the equipment off and on, the user is encouraged to try to correct the interference by one or more of the following measures:
 - Reorient or relocate the receiving antenna.
 - Increase the separation between the equipment and receiver.
 - Connect the equipment into an outlet on a circuit different from that to which the receiver is connected.
 - Consult the dealer or an experienced radio/TV technician for help.

Changes or modifications not expressly approved by the party responsible for compliance could void the user's authority to operate the equipment.

RF Exposure Information (SAR)

This device meets the government's requirements for exposure to radio waves. This device is designed and manufactured not to exceed the emission limits for exposure to radio frequency (RF) energy set by the Federal Communications Commission of the U.S. Government.

The exposure standard for wireless devices employs a unit of measurement known as the Specific Absorption Rate, or SAR. The SAR limit set by the FCC is 1.6W/kg. *Tests for SAR are conducted using standard operating positions accepted by the FCC with the device transmitting at its highest certified power level in all tested frequency bands. Although the SAR is determined at the highest certified power level, the actual SAR level of the device while operating can be well below the maximum value. This is because the device is designed to operate at multiple power levels so as to use only the power required to reach the network. In general, the closer you are to a wireless base station antenna, the lower the power output.

The highest SAR value for the device as reported to the FCC when tested for use at the ear is 0.191 W/kg@1g for PCS Head SAR and when worn on the body, as described in this user guide, is 0.651 W/kg@1g for PCS Body SAR and 0.47 W/kg@1g for WLAN Body SAR. (Body-worn measurements differ among device models, depending upon available enhancements and FCC requirements.)

While there may be differences between the SAR levels of various devices and at various positions, they all meet the government requirement.

The FCC has granted an Equipment Authorization for this device with all reported SAR levels evaluated as in compliance with the FCC RF exposure guidelines. SAR information on this device is on file with the FCC and can be found under the Display Grant section of <http://www.fcc.gov/oet/fccid> after searching on FCC ID: ESN-SP70.

For body worn operation, this device has been tested and meets the FCC RF exposure guidelines for use with an accessory that contains no metal and the positions the handset a minimum of 1.5 cm from the body. Use of other enhancements may not ensure compliance with FCC RF exposure guidelines. If you do not use a body-worn accessory and are not holding the device at the ear, position the handset a minimum of 1.5 cm from your body when the device is switched on.