

12.1 Microsoft ActiveSync

With Microsoft ActiveSync on both your desktop computer and Pocket PC Phone, you can exchange information between a desktop computer or server and your Pocket PC Phone. To synchronize your Pocket PC Phone with your desktop computer, you must install ActiveSync on the desktop computer. Using ActiveSync, you can:

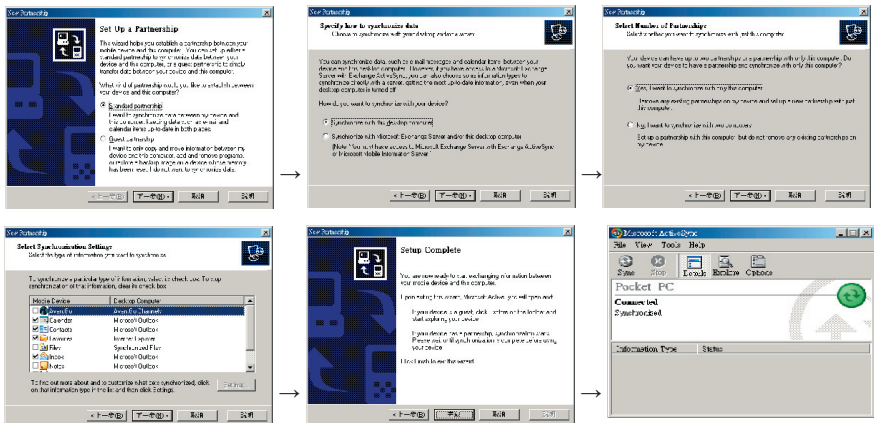
- Synchronize information between your Pocket PC Phone and desktop computer or server so that you have the latest information in all locations.
- Change synchronization settings and synchronization schedule.
- Copy files between your Pocket PC Phone and desktop computer.
- Back up and restore device information.
- Add/remove programs to/from your Pocket PC Phone.

Installing Microsoft ActiveSync

An Microsoft Companion CD is supplied with your Pocket PC Phone. You need to use the CD to install ActiveSync on the desktop computer before performing synchronization.

Follow this procedure:

1. Turn on the desktop computer.
2. Insert the Companion CD into the CD-ROM drive of the desktop computer.
3. On the first screen, click the arrow to enter the main screen and click **Start Here**.
4. On the next screen, click **Install ActiveSync 3.x** on the left column.
5. On the next screen, click **Install** to start installation.
6. When prompted, connect one end of the USB cable to the converter, and then connect the converter to the USB port on the bottom of your Pocket PC Phone.
7. Connect the other end of the USB cable to the USB port of the desktop computer.
8. The Add New Hardware Wizard should automatically install the USB driver. (If you need to specify the location of the driver, click **Browse** and select the CD-ROM drive containing the Companion CD.)
9. Follow the on-screen instructions to establish a partnership between your Pocket PC Phone and your desktop computer. Select the types of information for synchronization. After your first synchronization, the data you have stored on your desktop computer such as Calendar, Contacts and Tasks are copied to your Pocket PC Phone.





• If you do not establish a standard partnership with the desktop computer, then you cannot perform synchronization between two devices, and you will need to select a desired partnership every time you connect to the desktop computer.

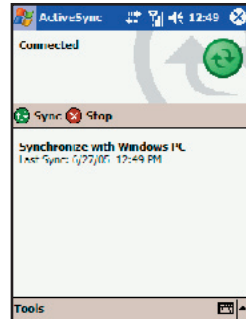
Connecting to Your Desktop Computer

You can connect your Pocket PC Phone to a desktop computer in several ways:

- Use the USB cable or an optional cradle.
- Use the IR port in place of using a cable. (For complete instructions on connecting to your desktop computer by infrared, see the ActiveSync Help on your desktop computer.)
- Use a network or dial-up connection.


Synchronizing with Your Desktop Computer

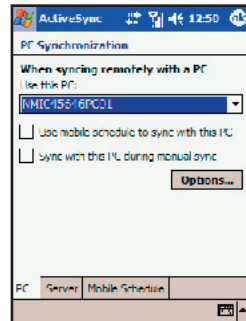
1. Connect your Pocket PC Phone to your desktop computer.
2. On your Pocket PC Phone, tap  → **ActiveSync**.
3. Tap  to start synchronization.




Setting up Remote Synchronization

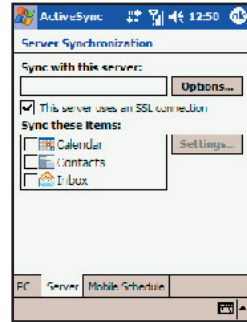
Synchronizing Remotely with a Desktop Computer

1. Make sure that the desktop computer is powered on.
2. Connect to the corporate network. (See Chapter 13 for more information.)
3. On the Pocket PC Phone, tap  → **ActiveSync**.
4. Tap **Tools** → **Options** → **PC**.
5. In **When syncing remotely with a PC**, select your computer name in the **Use this PC** list.
6. Select one or both of the items: **Use mobile schedule to sync with this PC** and **Sync with this PC during manual sync**.
7. Tap **OK**.



Synchronizing Remotely with a Server

1. Make sure that the server is powered on.
2. Connect to the Internet. (See Chapter 13 for more information.)
3. On the Pocket PC Phone, tap  → **ActiveSync**.
4. Tap **Tools** → **Options** → **Server**.
5. Select the types of information, such as Calendar, Contacts, or Inbox, that you want to synchronize with the server.
6. To change synchronization settings, such as the amount synchronized, select the type of information and tap **Settings**. Note that there are no synchronization settings for Contacts.
7. In **Sync with this server**, enter the name of the Microsoft Exchange server to which you want to connect.
8. Tap **Options** → **Connection**.
9. Enter your user name, password, and domain name. If you want to perform automatic synchronization, select **Save password**.
10. Tap **OK**.




Synchronizing Automatically

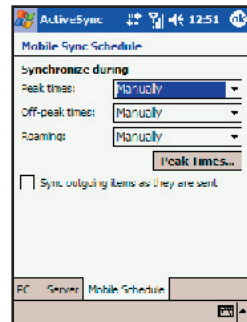
With ActiveSync, you can schedule automatic synchronization between your Pocket PC Phone and a server every time when an item arrives or is changed at the server. Your Pocket PC Phone is informed of that event and synchronizes automatically to retrieve those items, making your device always up-to-date.

Using ActiveSync, you can schedule synchronization of your device on two separate schedules.

- Use the peak times schedule to synchronize during working hours or other times when you have higher mail volumes.
- Use the off-peak schedule to synchronize during times when you have lower mail volumes.
- When you are roaming, you can synchronize manually to reduce roaming charges, or you can synchronize using the mobile schedules.

To set up the schedule for automatic synchronization:


1. Make sure not to connect your Pocket PC Phone to the desktop computer.
2. On the Pocket PC Phone, tap  → **ActiveSync**.
3. Tap **Tools** → **Options** → **Mobile Schedule**.
4. To synchronize periodically during peak times, select the frequency of synchronization in the **Peak times** list. To synchronize periodically during off-peak times, select the frequency of synchronization in the **Off-peak times** list. To synchronize while roaming, select a frequency in the **Roaming** list.
5. To set the days and hours for peak times, tap **Peak Times**.
6. Tap **OK**.



12.2 Pocket Word

You can create and edit documents and templates in Microsoft Pocket Word just as you do in Microsoft Word on your desktop computer.

Creating a Document

1. Tap  → **Programs** → **Pocket Word**.
2. Tap **New**. You'll see either a blank document or a template.
3. You can enter information by working in different modes, which you select from the **View** menu.
4. When you have finished entering the information and tap **OK**, the document is automatically saved. Word documents are usually saved as .psw files, but you can also save them in other file formats, such as .doc, .rtf or .txt.



Opening an Existing Document

In the document list, tap the document you want to open. If you don't see the document in the list, make sure you've chosen the correct folder in the folder list (labeled **All Folders** by default).

You can have only one document open at a time. When you open a second document, the first one is saved and closed automatically.




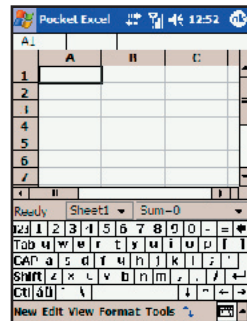
- If you're opening a Word document that was created on a desktop computer, you may want to select **View > Wrap** to Window so that you can see the entire document.

12.3 Pocket Excel

You can create and edit workbooks and templates in Microsoft Pocket Excel just as you do in Microsoft Excel on your desktop computer.

Creating a Workbook

1. Tap  → **Programs** → **Pocket Excel**.
2. Tap **New**. You'll see either a blank workbook or template.
3. You can enter formulas and functions, and then filter data to see the subset of information.
4. When you have finished entering the information and tap **OK**, the document is automatically saved. Pocket Excel workbooks are usually saved as .pxl files, but you can also save them in .xls format.



Opening an Existing Workbook

In the workbook list, tap the file you want to open. If you don't see the workbook in the list, make sure you've chosen the correct folder in the folder list (labeled **All Folders** by default).



- You can open only one workbook at a time; when you open a second workbook, you will be asked to save the first.

12.4 MSN Messenger


MSN Messenger on your mobile device provides the same chat environment as MSN Messenger on your desktop computer. These features include:

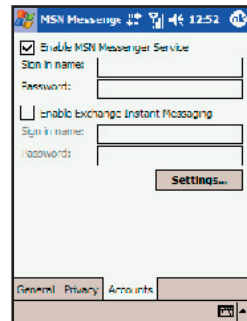
- Seeing who is online.
- Sending and receiving instant messages.
- Having an instant message conversation with a group of contacts.
- Telling contacts that you are unavailable.
- Blocking contacts from seeing your status or sending you messages.

Setting Up an Account


Before you can use MSN Messenger, you must set up the instant messaging account(s) to use. For MSN Messenger Service, you must have a Microsoft Passport or Hotmail account. For Exchange Instant Messaging, you must have an Exchange account.

To set up a Microsoft Passport account, go to <http://www.passport.com>. To set up a Hotmail account, go to <http://www.hotmail.com>. To set up an Exchange account, see your network administrator.

1. Create a connection for your Pocket PC Phone. (See Chapter 13 for more information.)
2. Tap  → **Programs** → **MSN Messenger**.
3. Tap **Tools** → **Options** → **Accounts**.
4. Select **Enable MSN Messenger Service** and/or **Enable Exchange Instant Messaging**.
5. Enter your sign-in name and password for the selected account(s). Your sign-in name is usually in the form of: `username@domain.com`.
6. If you select both accounts, tap **Settings**, and then select which account to sign in to first.



Signing In and Out

1. Tap  → **Programs** → **MSN Messenger**.
2. To sign in, tap anywhere on the screen. Follow the directions on the screen.
3. To sign out, tap **Tools** → **Sign out**.

Managing Contacts

The MSN Messenger window shows all of your messenger contacts at a glance and is divided into Online and Offline categories. From this view, while connected, you can chat, send email, block the contact from chatting with you or delete contacts from your list using the pop-up menu.

Chatting With Contacts


Tap a contact name to open a chat window. Enter your message in the text entry area at the bottom of the screen or tap **My Text** to enter a preset message and tap **Send**. To invite another contact to a multi-user chat, in the **Tools** menu, tap **Invite** and tap the contact you want to invite.

12.5 Windows Media Player

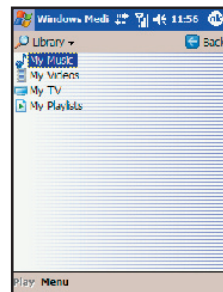
Use Microsoft® Windows Media® Player 10 Mobile for Pocket PC Phone to play digital audio and video files that are stored on your device or on the Web.

By default, Windows Media Player can play Windows Media or MP3 and MP4 files (including files with the extensions .asf, .wma, .wmv, .mp3 and .mp4).

Starting Windows Media Player

To start Windows Media Player, tap  → **Programs** → **Windows Media**.

By default, Windows Media Player displays the Library screen as the startup screen after the Pocket PC Phone is turned on.



Screens and Menus

Windows Media Player has three primary screens:

- **Playback screen**
The screen that displays the playback controls (such as Play, Pause, Next, Previous, and Volume), the album art window, and the video window. You can change the appearance of this screen by choosing a different skin.
- **Now Playing screen**
The screen that displays the Now Playing playlist. This special playlist indicates the currently playing file and any files that are “queued up” to play next.
- **Library screen**
The screen that lets you quickly find your audio files, video files, and playlists. It contains categories such as My Music, My Video, My TV, and My Playlists.

At the bottom of each screen is Menu. The commands on this menu change depending upon which screen you are viewing.

- **Playback screen menu**

Item	Description
Play/Pause	Starts or pauses playback.
Repeat	Plays the items in the Now Playing playlist repeatedly.
Stop	Stops playback.
Full Screen	When a video is playing, displays it by using the entire screen.
Library	Displays the Library screen so you can choose a file to play.

Item	Description
Open URL	Lets you play a file on a network, such as the Internet.
Options	Lets you adjust various Windows Media Player options, including network, skin, and hardware button options. (See the “Changing Windows Media Player Settings” section later in the chapter.)
Properties	Displays information about the currently playing file.
About	Displays information about Windows Media Player, such as the version number.

- Now Playing screen menu

Item	Description
Library	Displays the Library screen so you can choose a file to play.
Move Up	Moves the selected item up in the playlist order.
Move Down	Moves the selected item down in the playlist order.
Delete from Playlist	Deletes the selected item from the playlist.
Clear Now Playing	Deletes all items from the Now Playing playlist.
Error Details	Displays error information about the selected item (an exclamation mark appears before the item name if error details are available).
Properties	Displays information about the selected file.

- Library screen menu

Item	Description
Queue Up	Adds the selected item to the end of the current (Now Playing) playlist.
Delete from Library	Deletes the selected item from the library.
Update Library	Adds new items to the library by searching your device or storage card.
Open File	Lets you find and play files that are stored on your device or storage card but that are not in the library.
Properties	Displays information about the selected file.

Libraries

The library contains links to your audio files, video files, and playlists. As in the desktop Player, you will be allowed to sort your content by criteria such as artist name, album title, genre, or actor.

Unlike the desktop Player, the Pocket PC Phone Player can have multiple libraries. Each library represents an available storage location. For example, if you store some content in the internal storage location on the device (known as random access memory or RAM), the My Device library will contain links to those files.

If you also store content on removable storage cards, you will have additional libraries for each of those cards.

On the Library screen, you can switch between the My Device library and any other libraries that are available to your device.


By default, Windows Media Player automatically searches the internal storage location of your device for compatible digital media files. If it finds any, they will be added to the My Device library.

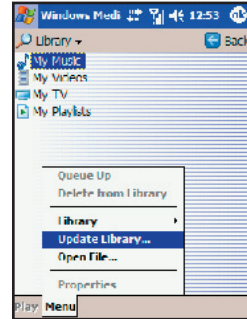
Similarly, when you insert a removable storage card into your device, Windows Media Player automatically searches it for content and adds it to a Storage Card library.

If the Player does not detect new files that you copy to your device, you can manually update the library by using the Update Library command.

Updating a Library

In most cases, Windows Media Player automatically updates your libraries as necessary. However, you can manually update a library to ensure that it has links to any new files that you might have recently copied to your Pocket PC Phone or a removable storage card.


1. Tap  → **Programs** → **Windows Media**.
2. If you are not already on the Library screen, tap **Menu** → **Library**.
3. On the Library screen, tap the Library arrow (near the top of the screen), and then tap the library that you want to update (for example, Storage Card).
4. Tap **Menu** → **Update Library**.
5. Tap **Search**, wait for the files to be added, and then tap **Done**.

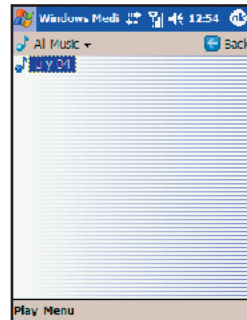


Playback

Playing Items on Your Pocket PC Phone

Use the library to find and play songs, videos, and playlists that are stored on your Pocket PC Phone or removable storage card.

1. Tap  → **Programs** → **Windows Media**.
2. If you are not already on the Library screen, tap **Menu** → **Library**.
3. On the Library screen, tap the Library arrow (near the top of the screen), and then tap the library that you want to update (for example, Storage Card).
4. Tap a category (for example, My Music or My Playlists), tap and hold the item that you want to play (such as a song, album, or artist name), and then tap **Play** or **Queue Up**.














5. Tap **Play** to start playing back the selected file.




To play a file stored on your device but that is not in a library, on the Library screen, tap **Menu** → **Open File**. Tap and hold the item that you want to play (such as a file or a folder), and then tap **Play** or **Queue Up**.

Controls

Item	Description
	Plays a file.
	Pauses a file.
	Skips to the beginning of the current file or to the previous file.
	Skips to the next file.
	Adjusts the playback progress of a selected file.
	Increases the volume level.
	Decreases the volume level.
	Turns the sound on or off.
	Displays a video by using the entire screen (full screen).
	Displays a Web site, such as WindowsMedia.com, where you can find music and videos to play.
	If your device hardware supports it, you can rewind and fast-forward files by pressing and holding the Left/Right controls.

Playing an Item on a Network

Use the Open URL command to play a song or video that is stored on the Internet or on a network server.

1. Tap  → **Programs** → **Windows Media**.
2. If you are not on the Playback screen, tap **OK** to close the current screen and display the Playback screen.
3. Tap **Menu** → **Open URL**.
4. In the URL box, enter a network address. Or, in the History box, tap a URL that you have previously used.



- To play an item on a network, the phone must be connected to a network. For more information on creating a remote connection between your portable device and a network, see Chapter 13.

Playlists

A playlist is a list of digital media files that play in a specified order. By using the playlist, you can group audio and video files together for convenient playback.

For example, in the desktop Player, you can create a playlist of upbeat songs to listen to when you exercise or a playlist of soothing songs to enjoy during a long flight. When you synchronize with the desktop version of Windows Media Player 10, your favorite playlists are automatically copied to your Pocket PC Phone.

Your playlists are available in the library (in the My Playlists category). A temporary playlist, called Now Playing, is available from the Now Playing menu. It lists the currently playing file, as well as any files that have been “queued up” to play next.

Synchronization

Use the Sync feature in the desktop version of Windows Media Player 10 to automatically copy your favorite audio files, video files, and playlists from your desktop Player library to your Pocket PC Phone Player library every time you connect your Pocket PC Phone to your computer.

For more information on synchronization, see the Windows Media Player Help on the desktop computer.

Copying Files to Your Pocket PC Phone

Use the desktop version of Windows Media Player 10 to synchronize digital media files to your Pocket PC Phone (instead of dragging a file from a folder on your desktop computer to a folder on your Pocket PC Phone, for example). Using the desktop Player ensures that licenses are copied with protected files.

For more information on copying files to your Pocket PC Phone, see the Windows Media Player Help on the desktop computer.

Licenses and Protected Files

Protected files are digital media files that are secured with a license to prevent unauthorized distribution or playback.

The license specifies how you can use the file. For example, a license can specify how many times you can play a file. A license can also specify whether you can burn the file to a CD or synchronize (copy) the file to a portable device.

The terms of the license are specified by the person or company that provided the file. Most people obtain protected files from online stores, such as MSN Music and Napster.

When copying a protected file from your computer to your Pocket PC Phone, always use the desktop version of Windows Media Player 10 to synchronize (copy) the file to your Pocket PC Phone. For example, do not use Windows Explorer to drag and drop files from your computer to your Pocket PC Phone.

For more information on copying files to your Pocket PC Phone, see the Windows Media Player Help on the desktop computer.



• You can view the protection status for a file by checking its file properties (**Menu** → **Properties**).

Codecs

High-quality digital media files can require a large amount of storage space. To minimize file size, digital media files are often compressed by using software called a codec (short for compressor/decompressor). To play the file, it must be decompressed by using the same codec that compressed the file.

Windows Media Player for Pocket PC Phone can play files that have been compressed by using any of the following audio and video codecs. You can determine which codecs a file uses by checking its file properties (**Menu** → **Properties**).

Audio codecs

- Microsoft Windows Media Audio codec versions 1.0, 2.0, 7, 8, and 9

Although Windows Media Player for Pocket PC Phone supports all variants of the Windows Media Audio 9 codec (including the Windows Media Audio 9, Windows Media Audio 9 Professional, Windows Media Audio 9 Voice, and Windows Media Audio 9 Lossless codecs), the following variants are only partially supported:

- Windows Media Audio 9 Professional codec

Multiple channels are combined into a stereo mix during playback. Depending upon the audio playback capabilities of your device, content with an audio sampling rate higher than 48 kilohertz (KHz) may be played as 48 KHz.


- Windows Media Audio 9 Lossless codec

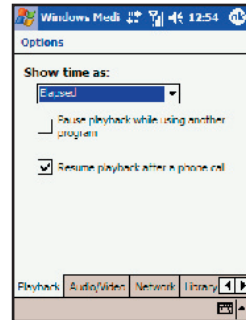
Depending upon the audio playback capabilities of your device, content with an audio sampling rate higher than 48 kilohertz (KHz) may be played as 48 KHz.

Video codecs

- Microsoft Windows Media Video codec versions 7, 8, and 9
- Microsoft Windows Media Video 9 Image codec versions 1.0 and 2.0
- Microsoft MPEG-4 codec version 2.0 and 3.0
- ISO MPEG-4 video codec version 1.0

Changing Windows Media Player Settings

1. Tap  → **Programs** → **Windows Media**.
2. If you are not on the Playback screen, tap **OK** to close the current screen and display the Playback screen.
3. Tap **Menu** → **Options** to customize Windows Media Player settings.






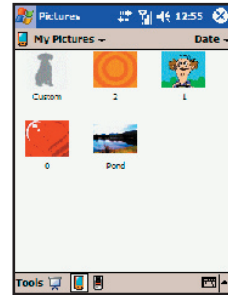
Item	Description
Change player appearance	Tap Skins . Tap Previous or Next until you find the skin that you want to use.
Shrink oversized video	Tap Audio/Video . Select the Shrink to fit window check box.
Play video in full screen	Tap Audio/Video . In Play video in full screen , select the desired option.
Change background playback	Tap Playback . Select or clear the Pause playback while using another program check box.
Change how time is displayed	Tap Playback . In the Show time as box, select the desired option.
Change playback after a phone call	Tap Playback . Select or clear the Resume playback after a phone call check box.
Change network connection speed	Tap Network . In the Internet Connection Speed box, tap the speed of your network connection.
Change network protocol options	Tap Network . In Protocol , select the check box for each protocol you want to enable.
Change the startup screen	Tap Library . Select the Start Player on Library screen check box to show the Library screen when you start Windows Media Player. Clear the Start Player on Library screen check box to show the Playback screen when you start Windows Media Player.

12.6 Pictures

Use Pictures to view .jpg pictures stored on your device or on a storage card, send pictures to others, view a slideshow of your pictures, or set a picture as the background on the Today screen.


Viewing Pictures

1. You can copy .jpg pictures from your desktop computer to the My Pictures folder, within the My Documents folder on your Pocket PC Phone. For more information on copying files from your desktop computer to your Pocket PC Phone, see ActiveSync Help on your desktop computer.
2. To view pictures in a storage card, insert the card.
3. Tap  → **Programs** → **Pictures**.
4. By default, the program displays thumbnails of the .jpg pictures in the My Pictures folder, within the My Documents folder on your Pocket PC Phone. To view the .jpg pictures in a storage card, tap the  icon. To view pictures on the Pocket PC Phone, tap the  icon.
5. Thumbnails of pictures appear on the screen. You can tap one of them to view the picture in full screen.





Sending Pictures

You can send a .jpg picture to others as an email attachment. The picture is resized to approximately 30 KB, making it easier to send over wireless connections.


1. Tap  → **Programs** → **Pictures**.
2. Tap the picture you want to send as an email attachment.
3. Tap **Tools** → **Send** via Email to create an email message with the picture attached.

Slideshow of Pictures

You can view your .jpg pictures as a slideshow on your device. Pictures will display slides of the pictures shown in thumbnail view with 5-second intervals between slides.

1. Tap  → **Programs** → **Pictures**.
2. Tap the  icon to view pictures as a slideshow.
3. Tap anywhere on the screen to display the Slideshow toolbar, which you can use to pause the slideshow, rotate the view, and more.

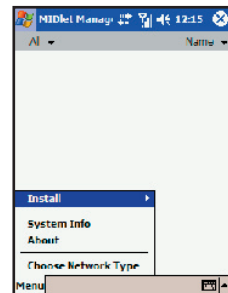
Setting a Picture as Background

1. Tap  → **Programs** → **Pictures**.
2. Tap the picture you want to set as the background.
3. Tap **Tools** → **Set as Today Wallpaper**.

12.7 JAVA


Java is a programming environment targeting various applications running on mobile devices, such as games and useful applets. Downloading Java applications may be charged or free of charge. For free Java applications, download them from the Internet or WAP sites. For charged Java applications, consult your mobile phone service provider for purchase. To use Java, you need to subscribe to the GPRS service from your mobile phone service provider, and make sure that you have set up the GPRS connection on the Pocket PC Phone.

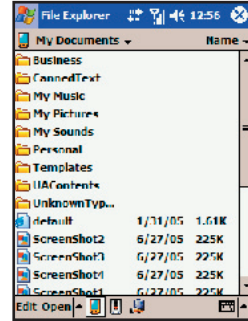
You can use the Java program to download Java games or applications. Tap  → **Programs** → **Java**.



12.8 File Explorer

File Explorer allows you to explore and manage the folders and files stored on the Pocket PC Phone or storage card.


1. Tap  → **Programs** → **File Explorer**.
2. Tap the folder list (labeled **My Documents** by default) and then the folder that you want to view.
3. To open an item, tap it.
4. To quickly delete, rename, copy, or move an item, tap and hold. Then, on the pop-up menu, tap **Copy**, **Delete**, or **Rename**.



- To select multiple items, tap and drag.

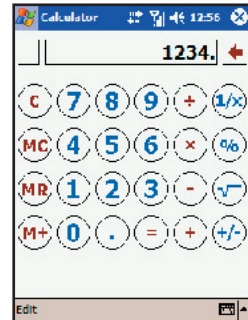
12.9 Calculator

You can use Calculator to perform any of the standard operations for which you would normally use a handheld calculator.

1. Tap  → **Programs** → **Calculator**.
2. Use the Calculator buttons or the input panel to enter numbers and perform calculations.




- To clear the current calculation or the displayed number, tap **C**.
- To clear the last digit entered in a multidigit entry, tap the arrow to the right of the entry box.
- To clear memory, tap **MC**.

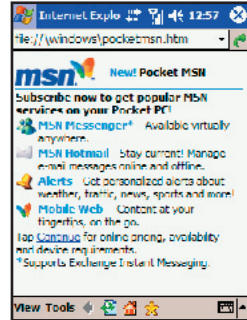


12.10 Pocket MSN

You can access the Pocket MSN web site where you can subscribe to get popular MSN services on your Pocket PC Phone.


You need to connect the Pocket PC Phone to the Internet to access the Pocket MSN web site. (See information in Section 12.1 or Chapter 13.)

1. Tap  → **Programs** → **Pocket MSN**.
2. Tap Continue at the lower-left of the screen.
3. Select the desired language for display.

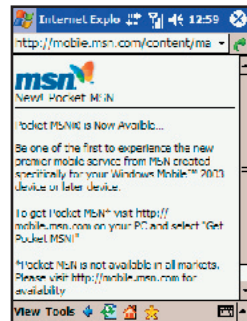


4. The screen displays the Pocket MSN web site.

Tap and hold on the screen to add the page to the Favorites list.

To add a page to the Favorites list, tap  → **Add/Delete** → **Add**, enter the name and address of the page, select the storage location and then tap **Add**.

You can subscribe to services from the web site.

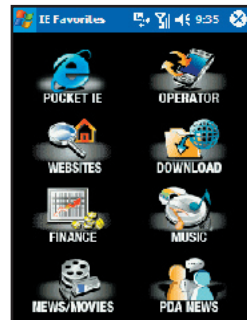


12.11 IE Favorites

There is an IE Favorites hot key on your Pocket PC Phone. Press this key to access the IE Favorites main page.

IE Favorites provides several categories of links for quick access.

- POCKET IE
- WEBSITES
- FINANCE
- NEWS//MOVIES
- OPERATOR
- DOWNLOAD
- MUSIC
- PDA NEWS




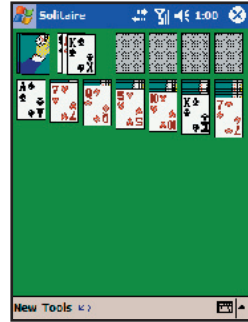
12.12 Games




Solitaire

The object of Solitaire is to use all the cards in the deck to build up the four suit stacks in ascending order, beginning with the aces.

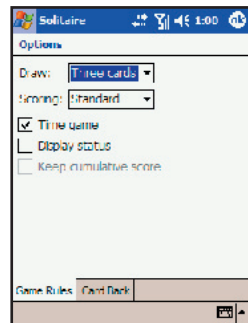
1. To open Solitaire, tap  → **Programs** → **Games** → **Solitaire**.
2. A new game is started. You can also tap **New** on the command bar to start a new game.



3. You can:
 - To move a card to one of the stacks, drag the card. Build the row stacks in descending order, from king to two, alternating between red and black cards.
 - To display cards in the upper-left stack, tap the stack.
 - In the row stacks, turn a card face-up by tapping it. You can move a king to an empty row stack.
 - To undo a move, tap the  icon.

Setting solitaire Options

To change the setting options, tap **Tools** → **Options**.



■ Game Rules



- **Draw** selects one card or three cards for each draw.
- **Scoring** selects the Standard or Vegas scoring system, or no scoring.
- **Time game** enables the timing function.
- **Display status** shows the elapsed time and scores of games.
- **Keep cumulative score** keeps a cumulative score when using the Vegas scoring system.

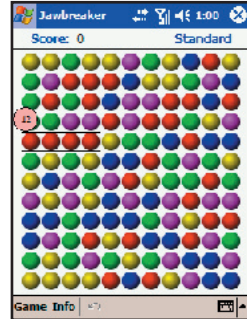
■ Card Back

You can select a desired card back.

Jawbreaker

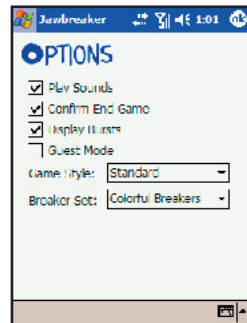
To play Jawbreaker, you need to align similar jawbreakers in order to form large blocks of jawbreakers before bursting them. The more jawbreakers in the block before they are burst, the greater number of points you will receive.

1. To open Jawbreaker, tap  → **Programs** → **Games** → **Jawbreaker**.
2. Tap a jawbreaker that is connected to other similar jawbreakers. Those connected jawbreakers (at least two jawbreakers) will be highlighted, and a new jawbreaker will pop up displaying that block's potential jawbreaker points.
3. Tap on your selection again in order to burst the jawbreakers. All jawbreakers above your burst block will now fall down.
To take back the last move you have made, tap the  icon.
4. To start a new game, tap **Games** → **New Game**.
5. To view the statistics, tap **Info** → **Statistics**.



Setting Jawbreaker Options

To change the setting options, tap **Game** → **Options**.







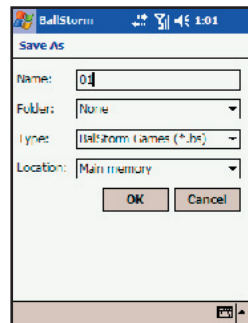
- **Play Sounds** sets whether or not you want Jawbreaker to make sounds.
- **Confirm End Game** sets Jawbreaker to pop up a confirmation dialog when the “End Game” menu item is selected.
- **Display Burst** sets to display the burst of jawbreakers or not.
- **Guest Mode** plays the game without affecting the statistics
- **Game Style** selects one of the following game styles.
 - **Standard** The default mode of play where there is a set number of jawbreaker that will not increase.
 - **Continuous** In this style, whenever a vertical set of jawbreakers has been burst and the remaining jawbreakers have shifted over to the right, a new randomly selected column of jawbreakers will pop up on the left, thereby allowing a game to be played for an extended amount of time.
 - **Shifter** In this style, when a set of jawbreakers has been burst, all remaining jawbreakers to the top and left will shift down and to the right.
 - **MegaShift** This style is a combination of the shifter and continuous styles in that jawbreakers will shift down and to the right while empty columns will fill on the left.
- **Breaker set** changes the color of the jawbreakers.



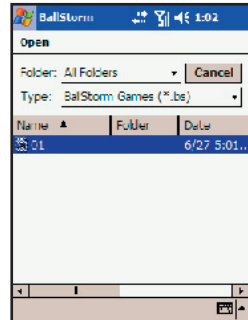
Ballstorm



The goal of Ballstorm is to clear out the bricks by hitting them with one of the space balls.

1. To open Ballstorm, tap  → **Programs** → **Games** → **Ballstorm**.
2. Tap the screen to start the new game. You have three chances for a game. The game level and scores are displayed at the upper-left corner of the screen, and the remaining chances at the upper-right corner.
3. Tap the bat to release the ball to hit the bricks.
 - Tap and drag to move the bat. You can also press the navigation pad to move the bat.
Navigation pad: ok: confirming a new game
 ↑: releasing the bat
 ← and →: moving the bat
 - Hitting the bricks may bring you bonus or bombs.
 - During the game, you can tap the  icon to pause the game; to resume the game, tap **Game** → **Resume** or tap the  icon.
 - During the game, you can tap **Game** → **Save** or tap the  icon to save the progress of the game.



To resume the game, tap **Game** → **Open** or tap the  icon to open the game that you saved previously.

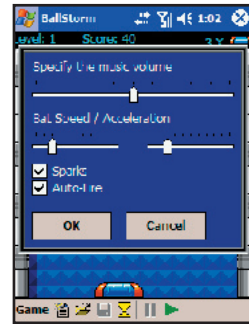


4. When all bricks are cleared, tap the screen to enter the next level.
5. To start a new game, tap **Game** → **New** or tap the  icon.
6. To view the high scores, tap **Game** → **Top Ranking** or tap the  icon.

Setting Ballstorm Options


To change the setting options, tap **Game** → **Options**.

- **Specify the music volume** adjusts the music volume.
- **Bat speed / Acceleration** adjusts the speed and acceleration of the bat's movement.
- **Sparks** selects to show sparks on the screen when the ball hits the brick.
- **Auto-Fire** selects to enable auto firing when you acquire firing weapon.



Snails


Snails is a fun action-strategy game. You need to install this game using the supplied CD.

1. To open Snails, tap  → **Programs** → **Games** → **Snails**.
2. Tap **Deathmatch** on the main menu to select a game mode and play against an opposing team.
3. Tap **Missions** to select a mission. Each mission contains two to four levels.
4. Tap **Move** to move your position.
5. Tap **Aim** to select a weapon for attack.



Flux

Flux is a 3D space flying racing game. You need to install this game by using the supplied CD.

1. To open Flux, tap  → **Programs** → **Games** → **Flux**.
2. On the login screen, enter your login name and tap **OK**.
3. On the main menu, select a game mode, such as **Practice**.
4. On the next screen, select a racing track, such as **Serpent**.
5. On the next screen, select a flying craft, such as **Mosquito**.
6. After the loading, tap the screen to start the game.



Chapter 13

Getting Connected

- 13.1 Setting up Connections
- 13.2 GPRS/MMS Connections
- 13.3 Transferring Items Using Infrared
- 13.4 Bluetooth

13.1 Setting up Connections


You can set up connections to the Internet and corporate network at work in order to do such activities as browse the Internet or intranet, send/receive email and instant messages, and synchronize information using ActiveSync.

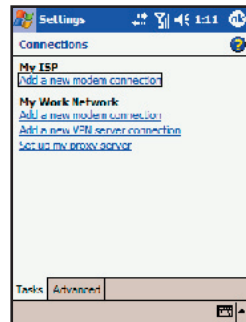
Connections can be made using a modem, wireless network, or network (Ethernet) card. A modem connection can be used to set up connections with an external modem, or through your mobile phone network using a cellular line or GPRS.

Your device has two groups of connection settings:

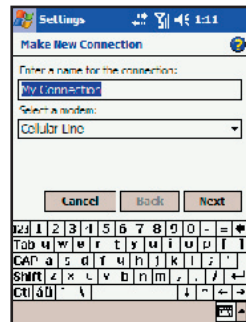
- **My ISP settings** are used to connect to the Internet
- **My Work Network settings** can be used to connect to any private network, such as a corporate network you use at work.


Connecting to the Internet

1. Obtain the following information from your ISP: ISP server phone number, user name, and password.
2. Tap  → **Settings** → **Connections** → **Connections**.
3. In **My ISP**, tap **Add a new modem connection**.




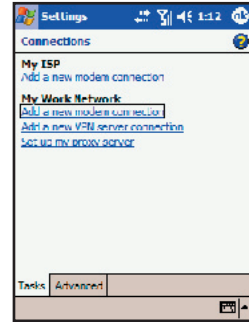
4. Enter a name for the connection, such as your company's name. In the **Select a modem** list, tap your modem type. Tap **Next**.
5. Enter the phone number. Tap **Next**.
6. Enter your user name, password, and domain name as provided by your ISP. If a domain name was not provided, try the connection without entering a domain name. You need not to change any advanced settings. Tap **Finish**.
7. To start a connection, insert any necessary equipment, such as a modem card, into the device, and begin using a desired program. For example, switch to Pocket Internet Explorer and browse to a Web page. Your device will automatically get connected.



-  If you are using any type of external modem, in the Select a modem list, select the modem by name. If a listing does not exist for your external modem, tap **Hayes Compatible on COM1**.
- To set up a network card or wireless network connection for your ISP, create a new connection in **My Work Network**.

Connecting to Work

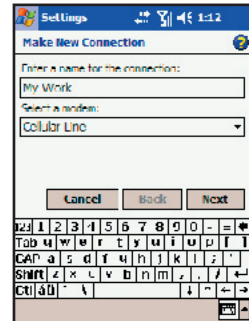
1. Obtain the following information from your network administrator: server phone number, user name, and password.
2. Tap  → **Settings** → **Connections** → **Connections**.
3. In **My Work Network**, tap **Add a new modem connection**.



4. Enter a name for the connection, such as your company's name. In the **Select a modem** list, tap your modem type.

Tap **Next**.

5. Enter the phone number. Tap **Next**.
6. Enter your user name, password, and domain name as provided by your network administrator. If a domain name was not provided, try the connection without entering a domain name. You need not to change any advanced settings. Tap **Finish**.
7. To start a connection, insert any necessary equipment, such as a modem card, into the device, and begin using a desired program. For example, switch to Pocket Internet Explorer and browse to a Web page. Your device will automatically get connected.

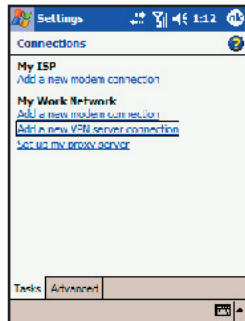


- If you are using any type of external modem, in the **Select a modem** list, select the modem by name. If a listing does not exist for your external modem, tap **Hayes Compatible on COM1**.

Setting up VPN Server Connections

A VPN connection helps you to securely connect to servers, such as a corporate network, via the Internet. Ask your network administrator for your user name, password, domain name, TCP/IP settings, and host name or IP address of the VPN server.

1. Tap  → **Settings** → **Connections** → **Connections**.
2. In **My Work Network**, tap **Add a new VPN server connection**.



3. In **Name**, enter a name for the connection, such as your company name.

In **Host name/IP**, enter the name and IP address of the VPN server.

Next to **VPN type**, select the type of authentication to use with your device: **IPSec/L2TP** or **PPTP**. If you aren't sure which option to choose, ask your network administrator.

Tap **Next**.

4. Select the type of authentication. If you select **A pre-shared key**, enter the key provided by your network administrator.


Tap **Next**.

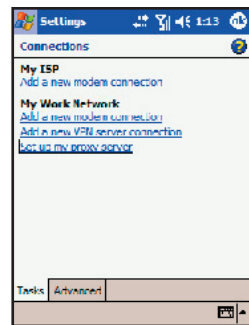
5. Enter your user name, password, and domain name as provided by your network administrator. If a domain name was not provided, try the connection without entering a domain name. You should not need to change any advanced settings. Tap **Finish**.
6. To start a connection, insert any necessary equipment, such as a network (Ethernet) card, into the device, and begin using a desired program. For example, switch to Pocket Internet Explorer and browse to a Web page. Your device will automatically get connected.



Setting up Proxy Server Settings


If you are connected to your ISP or private network during synchronization, your mobile device should download proper proxy settings during synchronization from your desktop computer. If these settings are not on your desktop computer or need to be changed, ask your ISP or network administrator for the proxy server name, server type, port, type of Socks protocol used, and your user name and password.

1. Tap  → **Settings** → **Connections** → **Connections**.
2. In **My Work Network**, tap **Add a new proxy server**.
3. Select **This network connects to the Internet and This network uses a proxy server to connect to the Internet**. In the **Proxy server** box, enter the proxy server name.
4. To change such settings as port number or proxy server type, tap **Advanced** and change desired settings.
5. When you are finished, tap **OK**.



Setting up a Network Card

Use a network (Ethernet) card to connect directly to a network. Once the network is connected, you can view the Internet or intranet, or download email. You do not need to create a new connection on your device.

1. Obtain the following information from your network administrator: user name, password, and domain name.
2. Insert the network card into your device.
3. The first time you insert the card, Network Settings will appear automatically so that you can configure the network card. If it does not appear, or to change settings later, tap  → **Settings** → **Connections** → **Network Cards**.
4. If you need to enter specific server information, tap the appropriate adapter, and then tap Name Servers. Most networks use DHCP, so you should not have to change these settings unless your network administrator instructs you to do so.
5. If necessary, connect the network card to the network by using a network cable. For information, see the documentation that came with your network card.
6. To start a connection, insert the network card, and begin using a desired program. For example, switch to Pocket Internet Explorer and browse to a Web page. Your device will automatically get connected.



If you use your network card with two networks, such as a private network at work and one at home for the Internet, you will need to change the network to which the network card connects.

13.2 GPRS/MMS Connections

GPRS is a high-speed transmission through the mobile phone network, which provides permanent on-line connection.


When you apply for the GPRS service, your service provider may have already set up a GPRS connection for you. You can also perform automatic or manual GPRS configuration on your Pocket PC Phone.

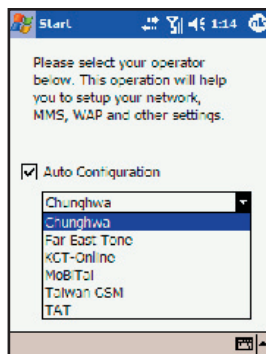


If you have subscribed to the GPRS and MMS services from your mobile phone service provider, GPRS connection is active, and so is MMS connection.

Automatic Configuration


Your Pocket PC Phone can perform automatic GPRS configuration.

Tap  → **Settings** → **Connections** → **GPRS Auto Configuration**. Select **Auto Configuration**, select your mobile phone service provider, and then tap **OK**.



Manual Configuration

If you need to set up the GPRS connection manually, follow this procedure:

1. Tap  → **Settings** → **Connections** → **Connections**.
2. Tap **Manage existing connections**.
3. The Pocket PC Phone has several existing connections for your selection. Tap the desired connection and tap **Edit**. Or, tap **New** to create a new connection.
4. Enter a name for the connection.
In **Select a modem**, select **Cellular Line (GPRS)**.
Tap **Next**.
5. Enter the access point name provided by your mobile phone service provider. Tap **Next**.
6. Enter your user name, password, and domain name as provided by your ISP. If a domain name was not provided, try the connection without entering a domain name. You should not need to change any advanced settings. Tap **Finish**.
7. The new connection is now on the connection list. Make sure you select the proper connection and tap **OK**.



- To remove a GPRS connection from the list, tap and hold the connection, and tap **Delete**.

13.3 Transferring Items Using Infrared

Use beaming software and hardware, such as infrared (IR), to send and receive information and files between mobile devices. If an IR port is installed on your desktop computer, you can send and receive information and files between your device and desktop computer.

When data transmission is not available, please note:

- Transfer only one file, or no more than 25 contact cards, at a time.
- When using IR, make sure nothing is between the two IR ports.
- Adjust the room lighting or move to another location (some types of light interfere with beaming).

Sending Information

1. Switch to the program where you created the item you want to send and locate the item in the list.
2. Tap and hold the item and tap **Beam File** on the pop-up menu.
 - In Tasks, tap **Beam Task**.
 - In Contacts, tap **Beam Contact**.
 - In Calendar, tap **Beam Appointment**.
3. Align the IR ports so that they are unobstructed and within a close range.

