

 **KINYO | ARTDio**  
www.kinyo.com

# ARTDio®

---

## **BT-328**

**2.1 BLUETOOTH® STEREO SPEAKER with  
Built-in Microphone**

**User's Guide**

**Guide De L'utilisateur**

**Guía De Uso**



Please read and understand all safety instruction before use.  
The Bluetooth® word mark and logos are owned by the Bluetooth SIG, Inc. and  
any use of such marks by Kinyo Company is under license.

## LIMITED WARRANTY

Kinyo Company Inc. (KINYO) warrants this product to the original purchaser against defects in material and workmanship for a period of one (1) year from the date of purchase. Kinyo will, at its option, repair or replace the defective product at no cost to you during the warranty period.

The warranty will not apply if the unit has been subject to accident, misuse, abuse, disassembly, altered or operated contrary to the instructions contained in the accompanying manual.

To obtain warranty service, proof of purchase, in the form of retail receipt, bill of sale or invoice must be presented as evidence that the unit is within the warranty period. The product must be packaged either in its original package or in such a way as to reasonably protect it from shipping damage. Properly fill out the warranty card with description of problem. Send the product freight prepaid or deliver to:

**ATTN: SERVICE DEPT. KINYO COMPANY INC.  
14235 LOMITAS AVE. LA PUENTE, CA 91746**

### ONE YEAR LIMITED WARRANTY CERTIFICATE

NAME		
ADDRESS		
CITY	STATE	ZIP
PHONE	EMAIL	
DATE OF PURCHASE	WHERE PURCHASED	
PROBLEM		
SIGNATURE		

*\*This warranty is only valid in the United States of America.*



14235 LOMITAS AVE, LA PUENTE, CA 91746

WWW.KINYO.COM

## IMPORTANT SAFETY INSTRUCTIONS

*Please read and understand all safety instructions before use.*

- Read these instructions.
- Keep these instructions.
- Heed all warnings.
- Do not use this apparatus near water.
- Clean only with dry cloth.
- Do not block any ventilation openings. Install in accordance with the manufacturer's instructions.
- Do not push objects into apparatus vents or slots because fire or electric shock hazards could result.
- Maintain a minimum distance of at least 6 inches around apparatus for sufficient ventilation
- Ventilation should not be impeded by covering the ventilation openings with items such as newspapers, table cloth, curtains, etc.
- No naked (open) flame sources, such as lighted candles, should be placed on or near apparatus.
- Place apparatus in a stable location so it will not fall causing product damage or bodily harm.
- Do not install near any heat sources such as radiators, heat registers, stoves, or other apparatus (including amplifiers) that produce heat.
- Do not defeat the safety purpose of the polarized plug. A polarized plug has two blades with one wider than the other. The wide blade is provided for your safety. If the provided plug does not fit into your outlet, consult an electrician for replacement of the obsolete outlet.
- Operate the apparatus only from the low level audio line output jack of the computer or of an audio device.
- Protect the power cord from being walked on or pinched particularly at plugs, convenience receptacles, and the point where they exit from the apparatus.
- Only use attachments/ accessories specified by the manufacturer.
- Unplug this apparatus during lightning storms or when unused for long periods of time.
- Refer all servicing to qualified service personnel. Servicing is required when the apparatus has been damaged in any way, such as power-supply cord or plug is damaged liquid has been spilled or objects have fallen into the apparatus, the apparatus has been exposed to rain or moisture, does not operate normally, or has been dropped.
- The apparatus shall be disconnected from the mains by placing the power/standby switch in the standby position and unplugging the power cord of the apparatus from the AC mains receptacle.
- The socket-outlet shall be installed near the equipment and shall be easily accessible.

**CAUTION**  
RISK OF ELECTRIC SHOCK  
DO NOT OPEN

**CAUTION: TO REDUCE THE RISK OF ELECTRIC SHOCK, DO NOT REMOVE COVER OR BACK. NO USER-SERVICEABLE PARTS INSIDE. REFER SERVICING TO QUALIFIED SERVICE PERSONNEL.**

**WARNING TO REDUCE THE RISK OF FIRE OR ELECTRIC SHOCK, DO NOT EXPOSE THIS APPLIANCE TO RAIN OR MOISTURE. CAUTION PILOT LAMP SOLDERED IN PLACE. TO REDUCE THE RISK OF ELECTRIC SHOCK, REFER TO QUALIFIED SERVICE PERSONNEL.**

**ENVIRONMENTAL PROTECTION RECOMMENDATION**  
At the end of its working life, this product should not be disposed of with standard household waste, but rather dropped off at a collection point for the disposal of Waste Electrical and Electronic Equipment (WEEE) for recycling. This is confirmed by the symbol found on the product, user manual or packaging.



The exclamation point within an equilateral triangle is intended to alert the user to the presence of important operating and maintenance (servicing) instructions in the literature accompanying the appliance.



The lightning flash with arrowhead symbol is intended to alert the user to the presence of uninsulated dangerous voltage within the product's enclosure that may be of sufficient magnitude to constitute a risk of electric shock to persons.

**NOTE:** This equipment has been tested and found to comply with the limits for a Class B digital device, pursuant to Part 15 of the FCC Rules. These limits are designed to provide reasonable protection against harmful interference in a residential installation. This equipment generates, uses and can radiate radio frequency energy and, if not installed and used in accordance with the instructions, may cause harmful interference to radio communications. However, there is no guarantee that interference will not occur in a particular installation. If this equipment does cause harmful interference to radio or television reception, which can be determined by turning the equipment off and on, the user is encouraged to try to correct the interference by one or more of the following measures:

- Reorient or relocate the receiving antenna.
- Increase the separation between the equipment and receiver.
- Connect the equipment into an outlet on a circuit different from that to which the receiver is connected.
- Consult the dealer or an experienced radio/TV technician for help.

#### RF Exposure Information:

To comply with FCC RF exposure compliance requirement, this grant is applicable to only mobile configurations. The antenna used for this transmitter must be installed to provide a separation distance of at least 20cm from all persons and must not be co-located or operating in conjunction with any other antenna or transmitter.

Changes or modifications not expressly approved by the party responsible for compliance could void the user's authority to operate the equipment.

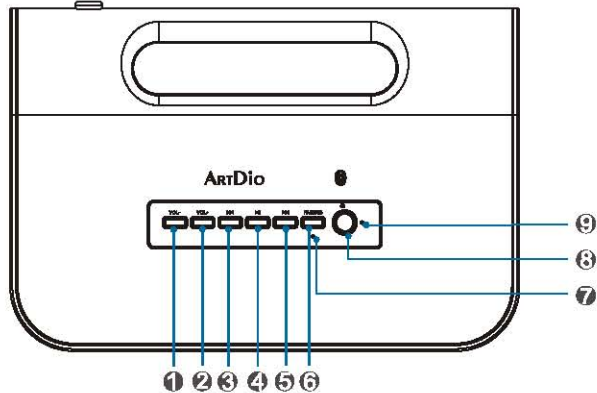
## INTRODUCTION

ArtDio's BT-328, is a 2.1 *Bluetooth* Stereo Speaker, compliant with *Bluetooth* version 1.2 class 2. The BT-328 supports *Bluetooth* A2DP<sup>1</sup>, AVRCP<sup>2</sup>, Headset and Hands-free profiles. The system is capable of streaming music from mobile phones, MP3 players, portable media players, PDA's, computers and other audio devices with *Bluetooth* A2DP enabled. This system operates wirelessly from audio sources up to 33 feet (10 meters) away open space. The built-in microphone, enables to easily answer phone calls hands-free through the system. The system also comes with an auxiliary input that will connect all line in audio sources (cables included).

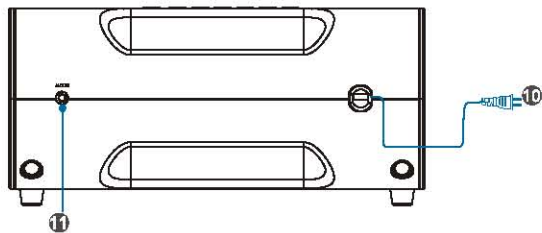
- 1 The playback and its plug-in *Bluetooth* adapter/transmitter/device needs to support A2DP (Audio Distribution Profile).
- 2 The playback and its plug-in *Bluetooth* adapter/transmitter/device needs support AVRCP (Audio/video Remote Control Profile).

## PRODUCT OVERVIEW

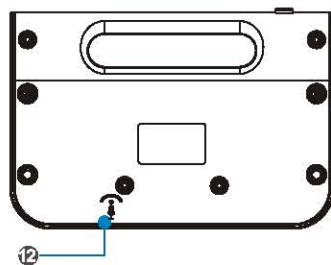
Top



Rear



Bottom



- 1 VOL- : Press to decrease the volume.
- 2 VOL+ : Press to increase the volume.
- 3 ◀◀ : Press to play the previous selection.
- 4 ▶▶ : Press to play the selection, press again to pause the selection.
- 5 ▶▶ : Press to play the next selection.
- 6 PAIRING Button:

- a) PAIRING: Initiate the pairing mode from the speaker to the *Bluetooth* enabled device by pressing and holding the Pairing button for three seconds. The blue LED will flash three times. Release the button and the blue and red LEDs will flash alternately to indicate that the speaker is in the pairing mode. Please see detailed pairing instructions on PAGE 5.

Note: If the pairing process cannot be completed within 90 seconds, the blue and red *Bluetooth* LED will stop flashing and the *Bluetooth* pairing process will automatically terminate. Please repeat the pairing instructions to pair up the *Bluetooth* speaker with the *Bluetooth* device.

- b) DISCONNECTING BLUETOOTH CONNECTION: To disconnect the *Bluetooth* wireless connection, press and hold the button again for three seconds. The blue LED will flash three times to indicate the *Bluetooth* signal is disconnected.
- c) ANSWERING/ENDING CALLS: To answer the phone on your *Bluetooth* device (when connected to the *Bluetooth* speaker) press the button to pick up the call. Press again to end the call.

### 7 PAIRING LED Indicator:

The blue and red LED will flash alternately to indicate that the *Bluetooth* speaker enters the pairing mode. The blue LED will flash constantly when the *Bluetooth* device is successfully connected with the *Bluetooth* speaker through *Bluetooth* wireless technology. If the *Bluetooth* connection is disconnected, the blue LED will flash three times to indicate the *Bluetooth* signal is disconnected.

- 8 Power Button: Press to turn speaker on, press again to turn speaker off.
- 9 Power LED Indicator: Green LED will light up when power is on.
- 10 AC Plug: Plug the AC power plug into a wall outlet.
- 11 AUX IN: Insert the 3.5mm stereo input cable (included) to the "AUX IN" jack. Connect the other end to the audio output of an audio source.
- 12 📍 : The Built-in Microphone is located on the bottom of the system.

Note: Make sure your *Bluetooth* device is connected with the *Bluetooth* speaker. When the phone rings on your *Bluetooth* device press the Pairing button to answer the call. You will be able to talk hands-free through the microphone. Press the Pairing button again to end the call.

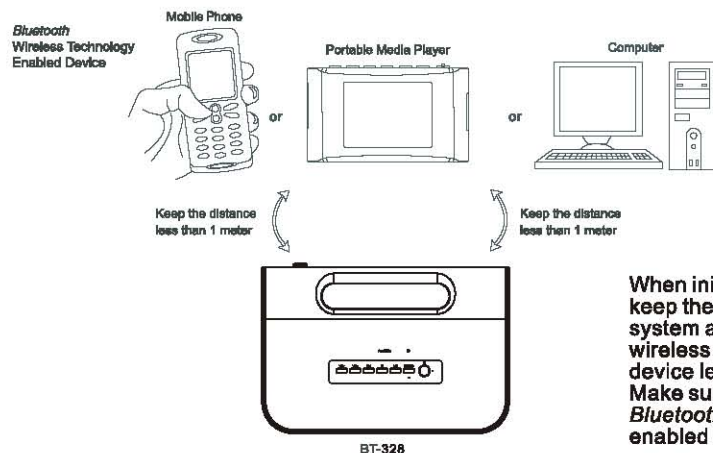
## POWER SOURCE

### AC Power (Wall Outlet)

1. Plug the AC plug into a wall outlet.
2. Press the POWER button to turn on the system.

## PAIRING WITH *BLUETOOTH* ENABLED DEVICES

You need to pair the system with your *Bluetooth* device before using. Make sure the system is on before pairing.



When initiating the pairing, keep the distance between the system and the *Bluetooth* wireless technology enabled device less than 3 Feet (1 meter). Make sure there is no other *Bluetooth* wireless technology enabled device nearby.

Pairing is the process of associating your speaker with *Bluetooth* devices. Pairing establishes a permanent security link between all devices using *Bluetooth* wireless technology. You will be prompted to enter a PIN (personal identification number) to establish the initial pairing. After the pairing is successful, you will not have to re-enter it again. The device remembers the PIN and will automatically connect to the speaker.

The following pairing instructions describe the pairing process between the speaker and a typical *Bluetooth* audio source. The pairing process may be different for your *Bluetooth* devices. If you have problems pairing, please refer to the user's guide of your specific device for detailed pairing instructions.

## PAIRING WITH ANY *BLUETOOTH* A2DP ENABLED DEVICES

1. Turn your speaker on. Press and hold PAIRING button for three seconds, until the PAIRING LED flashes blue light three times.
2. Release the button. The PAIRING LED will flash blue and red light alternately, indicating that the *Bluetooth* speaker and the *Bluetooth* device are in the pairing mode.
3. Turn on the *Bluetooth* settings on your *Bluetooth* device. Then perform a search for *Bluetooth* devices in range.
4. Your *Bluetooth* device will display a new device named "ARTDIO" on the *Bluetooth* Device List.
5. Select "ARTDIO" from the *Bluetooth* Device List.
6. You are prompted to enter a PIN. Enter the default PIN of "0000."
7. When the *Bluetooth* LED flashes blue light constantly, it indicates that the pairing process has been completed successfully. Your computer and the *Bluetooth* speaker are now connected through *Bluetooth* wireless technology.
8. The LCD screen on your *Bluetooth* device should display a *Bluetooth* (📶) or audio icon (🔊) to indicate *Bluetooth* connection.

**NOTE:** If the pairing process cannot be completed within 90 seconds, the blue and red *Bluetooth* LED stops flashing and the *Bluetooth* pairing process will automatically terminated. Please repeat the pairing instructions to pair up the speaker with the *Bluetooth* device.

9. Select music on your *Bluetooth* device to play wirelessly through your BT-328 speaker system. Refer to the user's guide of your *Bluetooth* device for more detailed instructions.

## PAIRING WITH *BLUETOOTH*-ENABLED COMPUTER

1. Start the *Bluetooth* application on your computer, then perform a search for *Bluetooth* devices in range.
2. Turn your speaker on. Press and hold PAIRING button for three seconds until the PAIRING LED flashes blue light three times.
3. Release the button. The PAIRING LED will flash blue and red light alternately indicating the *Bluetooth* speaker and *Bluetooth* device are in the pairing mode.
4. Your computer should now display a new device named "ARTDIO" on the *Bluetooth* Device List.
5. Select "ARTDIO" from the *Bluetooth* Device List.
6. You are prompted to enter a PIN. Enter the default PIN of "0000."
7. When the PAIRING LED flashes blue light constantly, it indicates that the pairing process has been completed successfully. Your computer and the *Bluetooth* speaker are now connected through *Bluetooth* wireless technology.

**NOTE:** If the pairing process cannot be completed within 90 seconds, the blue and red *Bluetooth* LED stops flashing and the *Bluetooth* pairing process will automatically terminated. Please repeat the pairing instructions to pair up the speaker with the *Bluetooth* device.

8. Select music on your computer to play wirelessly through your BT-328 speaker system. Refer to the user's guide of your *Bluetooth* application for more detailed instructions.

## PAIRING WITH A COMPUTER WITH A *BLUETOOTH* USB ADAPTER

1. For all computers that are not *Bluetooth*-enabled, plug in the *Bluetooth* USB Adapter into a USB port on your computer. Install the software if required (refer to the user's guide for detailed instructions for software installation)
2. Start the *Bluetooth* application on your computer. Perform a search for *Bluetooth* devices in range.
3. Turn on your speaker, then press and hold the PAIRING button for three seconds, until the PAIRING LED flashes blue light three times.
4. Release the button. The PAIRING LED will flash blue and red light alternately, indicating that the *Bluetooth* speaker and the *Bluetooth* device are in pairing mode.
5. Your computer should now display a new device named "ARTDIO" on the *Bluetooth* Device List.
6. Select "ARTDIO" from the *Bluetooth* Device List.
7. You are prompted to enter a PIN. Enter the default PIN of "0000."
8. When the PAIRING LED flashes blue light constantly, it indicates that the pairing process has been completed successfully. Your computer and the *Bluetooth* speaker are now connected through *Bluetooth* wireless technology.

**NOTE:** If the pairing process cannot be completed within 90 seconds, the blue and red *Bluetooth* LED stops flashing and the *Bluetooth* pairing process will automatically terminated. Please repeat the pairing instructions to pair up the speaker with the *Bluetooth* device.

9. Select music on your computer to play wirelessly through your BT-328 speaker system. Refer to the user's guide of your *Bluetooth* USB adapter for more detailed instructions.

## USING YOUR *BLUETOOTH* SPEAKER

### Using Your *Bluetooth* Speaker for Wireless Music

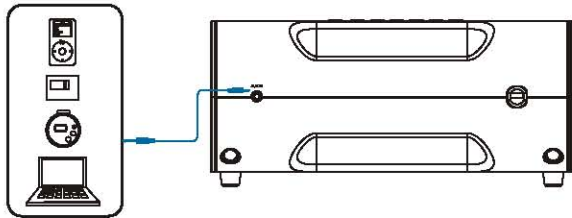
1. Select music from your *Bluetooth* device and play wirelessly through the speaker.
2. Press VOL + or VOL - to adjust the volume.
3. Press ⏮ or ⏭ to play previous or next selection.

### Using Your *Bluetooth* Speaker for Hands-free Call

1. If the phone rings from your *Bluetooth* device, press the PAIRING button to answer the phone. Enjoy your conversation hands-free through built-in microphone.
2. End the call by pressing the PAIRING button again.
3. Music will resume after the call.

### CONNECTING TO OTHER AUDIO SOURCES

Connect other audio sources such as iPod, MP3 players, portable CD players, portable game consoles and computer to the speaker through an auxiliary input.



1. Disconnect the *Bluetooth* wireless connection to any *Bluetooth* enabled device. Press and hold the PAIRING button for 3 seconds. The Pairing LED will flash blue light three times to indicate the *Bluetooth* wireless is disconnected.
2. Insert one end of the 3.5mm stereo input cable (included) into the "AUX IN" jack on the back of the system. Then insert the other end into the line output jack of your audio source.
3. Turn on the audio source and play music.
4. Press VOL+ or VOL- to adjust the volume.

### SPECIFICATIONS

- 18 Watts Total Power Output
- Pre-Amplified & Magnetically Shielded

#### Satellites:

- 3 Watts per Channel
- 2 x 2" Full Range Drivers
- Frequency Response: 160Hz ~ 20KHz

#### Subwoofer:

- 12 Watts with 3" Woofer Driver
- Frequency Response: 80Hz ~ 300Hz
- Built-In *Bluetooth*® Receiver
- Built-in Microphone
- Signal Input: *Bluetooth*® Wireless, 3.5mm Stereo Input
- Functions: Power On/Off, Volume Controls, Talk/Pairing, Play/Pause, Previous, Next
- Power Source: AC 12V 2A
- Dimensions: W9.45" H3.94" x D6.3"

#### Specifications for *Bluetooth*®:

- *Bluetooth*® v1.2 Compliant
- *Bluetooth* Radio Class 2
- 2.4GHz-2.4835GHz ISM Bandwidth
- Supports *Bluetooth*® A2DP, AVRCP, Headset and Hands-free Profiles
- Up to 33 Feet Operating Range (open space)
- Security Supports Pairing, Encryption, Authentication
- No software Installation is Needed

### BOX CONTENTS



1 x 3.5mm Stereo Input Cable