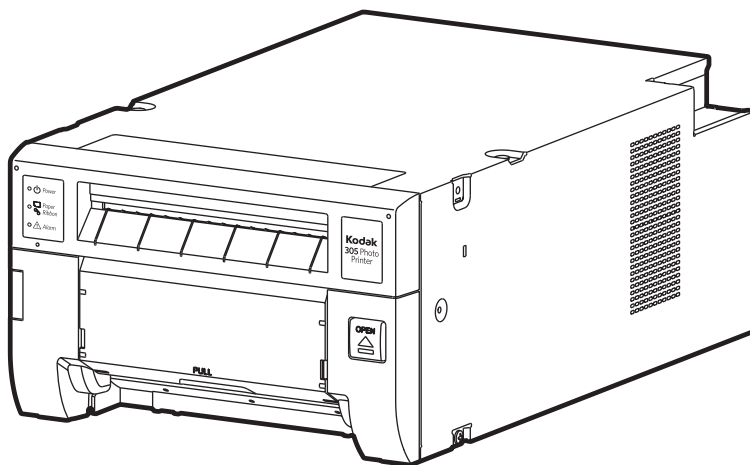


Kodak

305 Photo Printer

User's Guide



CE


Hereby, Kodak Alaris Inc., declares that this Digital Photo Printer is in compliance with the essential requirements and other relevant provisions of Directive 1999/5/EC.

INFORMATION

This Class A digital apparatus complies with Canadian ICES-003.

WARNING :

TO PREVENT FIRE OR SHOCK HAZARD, DO NOT EXPOSE THIS APPLIANCE TO RAIN OR MOISTURE.

	CAUTION RISK OF ELECTRIC SHOCK DO NOT OPEN	
CAUTION : TO REDUCE THE RISK OF ELECTRIC SHOCK, DO NOT REMOVE COVER (OR BACK) NO USER-SERVICEABLE PARTS INSIDE REFER SERVICING TO QUALIFIED SERVICE PERSONNEL.		



The lightning flash with arrowhead symbol, within an equilateral triangle, is intended to alert the user to the presence of uninsulated “dangerous voltage” within the product’s enclosure that may be of sufficient magnitude to constitute the risk of electric shock.



The exclamation point within an equilateral triangle is intended to alert the user to the presence of important operating and maintenance (servicing) instructions in the literature accompanying the appliance.



The “Caution, hot surface” symbol indicates that the marked item may be hot and should not be touched.



The “Electro Static Discharge (ESD) warning” symbol indicates that trouble (including equipment malfunction) due to static electricity may occur in certain conditions.



The “OFF/ON” symbol indicates connection to or disconnection from the mains, at least for mains switches.



The “Alternating current” symbol indicates that the equipment is suitable for alternating current only.

PRECAUTIONS

FEATURES

PREPARATION

TROUBLE-
SHOOTING

OTHERS

CONTENTS

CAUTION:

Changes or modifications not expressly approved by the party responsible for compliance could void the user's authority to operate the equipment.

NOTE:

This equipment has been tested and found to comply with the limits for a Class A digital device, pursuant to Part 15 of the FCC Rules. These limits are designed to provide reasonable protection against harmful interference when the equipment is operated in a commercial environment. This equipment generates, uses, and can radiate radio frequency energy and, if not installed and used in accordance with the instruction manual, may cause harmful interference to radio communications. Operation of this equipment in a residential area is likely to cause harmful interference in which case the user will be required to correct the interference at his or her own expense.

This device complies with Industry Canada licence-exempt RSS standard(s). Operation is subject to the following two conditions:

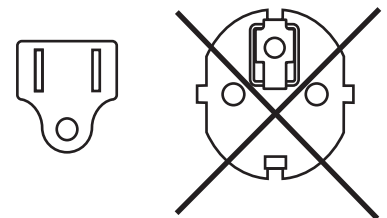
- (1) **this device may not cause interference, and**
- (2) **this device must accept any interference, including interference that may cause undesired operation of the device.**

WARNING:

In the USA or Canada, use the AC power cord according to the recommendations as below, in order to comply with UL60950-1 and CAN/CSA C22.2 No. 60950-1-03. Connect to the 120 V receptacle of the room or the host equipment.

The AC power cord should be UL or CSA approved and consist of type SVT, size 16 or 18AWG, length 2 m or shorter cord with IEC60320-1/C13 type, 125 V 10 A or higher rating connector and NEMA 5-15 type, 125 V 10 A or higher rating plug. Use the AC power cord as specified above, so as not to interfere with radio and television reception.

If you use other cables, it may cause interference with radio and television reception.

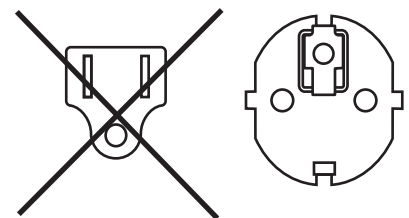


WARNING:

In Europe, use the AC power cord according to the recommendations as below, in order to comply with EN60950-1. Connect to the 230 V receptacle of the room or the host equipment.

The AC power cord should be VDE approved and consist of core size 0.75 mm² or bigger, length 2 m or shorter cord with IEC60320-1/C13 type, 250 V 10 A or higher rating connector and CEE(7)VII type, 250 V 10 A or higher rating plug. Use the AC power cord as specified above, so as not to interfere with radio and television reception.

If you use other cables, it may cause interference with radio and television reception.



WARNING:

The socket outlet shall be installed near the equipment and shall be easily accessible.

Note: This symbol mark is for EU countries only.

This symbol mark is according to the directive 2002/96/EC Article 10 Information for users and Annex IV, and/or to the directive 2006/66/EC Article 20 Information for end-users and Annex II.



Your Kodak Alaris Inc. product is designed and manufactured with high quality materials and components which can be recycled and/or reused.

This symbol means that electrical and electronic equipment, batteries and accumulators, at their end-of-life, should be disposed of separately from your household waste.

If a chemical symbol is printed beneath the symbol shown above, this chemical symbol means that the battery or accumulator contains a heavy metal at a certain concentration. This will be indicated as follows:

Hg: mercury (0,0005%), Cd: cadmium (0,002%), Pb: lead (0,004%)

In the European Union there are separate collection systems for used electrical and electronic products, batteries and accumulators.

Please, dispose of this equipment, batteries and accumulators correctly at your local community waste collection/recycling centre.

Please, help us to conserve the environment we live in!

CONTENTS

CONTENTS

Contents	1
Safety precautions	2-4
Special features	5
Unpacking	6
Features and functions	7-8
Front panel	7
Rear panel	8
Before operation	9-15
Printer setup procedure	9
Print paper installation	10-11
Ribbon installation	12-13
Handling of paper / ribbon kit	14
Connection with USB data signal equipment	15
Printer driver installation	15
Error messages and countermeasures	16-19
Indications on the front panel and countermeasures	16
Overcoming paper jams	17
Repairing a torn ribbon	18
Before calling for service	19
Instructions for transportation	19
Cleaning	20-21
Specifications	22

PRECAUTIONS

FEATURES

PREPARATION

TROUBLE-
SHOOTING

OTHERS

CONTENTS

SAFETY PRECAUTIONS

In the interest of safety, please observe the following precautions:

POWER REQUIREMENT

The Kodak 305 Photo Printer is designed to operate on 120 V AC 50/60 Hz in the U.S.A. and Canada, and 220 V - 240 V AC 50/60 Hz in Europe. Never connect to any outlet or power supply having a different voltage or frequency.

WARNING : THIS APPARATUS MUST BE EARTHED.

PROTECTIVE MEASURES

IF ABNORMALITIES ARISE,

Use of the printer during emission of smoke or abnormal sounds (without adopting countermeasures) is dangerous. In such a case, unplug the power cord from the source outlet immediately, and request maintenance service from the sales dealer.

NEVER INSERT ANY OBJECT INTO THE PRINTER

Foreign objects of any kind inserted into this printer constitute a safety hazard and can cause extensive damage.

DO NOT PLACE ANYTHING ON THE KODAK 305 PHOTO PRINTER

Heavy objects placed on the Kodak 305 Photo Printer can cause damage or obstruct proper ventilation.

PROTECT THE POWER CORD

Damage to the power cord may cause fire or shock hazard. When unplugging, hold by the plug only and remove carefully.

DO NOT PLACE WATER CONTAINERS ON THE PRINTER

Do not place flower vases, and other water-holding containers on the printer. If, for some reason, water seeps to the inside of the printer, unplug the power cord from the source outlet, and contact the sales dealer. If used without corrective measures, the printer may be damaged.

"In the interest of safety, avoid handling of liquids near the printer."

DO NOT REMOVE THE CABINET

Touching internal parts is dangerous, besides, it may lead to malfunction. Contact the sales dealer to carry out internal checks and adjustments. Before opening the cover for eliminating a jammed paper, etc., be sure to disconnect the power cord plug.

UNPLUG THE POWER CORD DURING A LONG ABSENCE

Turn off the main power switch and unplug the power cord during a long absence.

WHEN TRANSPORTING THE PRINTER

When transporting the printer, remove the ribbon and print paper from the printer. See "INSTRUCTIONS FOR TRANSPORTATION" on page 19.

WHEN MOVING THE PRINTER

Check that the printing unit is closed firmly. And pay attention not to press the OPEN button accidentally. When the printing unit is not closed firmly or you press the OPEN button accidentally, the printing unit may open. It can cause injury or damage.

BE CAREFUL AROUND PRINT PAPER EXIT SLOT

Don't insert your hand or any material into the paper exit slot during printing.

Do not touch the cutter blade inside the paper exit slot.

Otherwise, your finger will be injured.

DO NOT TOUCH THE THERMAL HEAD EXCEPT WHEN CLEANING

Do not touch the thermal head (located inside the printer) except when cleaning.

They are heated to high temperature and may cause burns or injury when touched.

Also, malfunction caused by static electricity may occur.

WHEN PLACING THE PRINT PAPER, KEEP THE PRINT PAPER UPRIGHT

When you put the print paper sideways on a table, etc., it may roll and fall. This may cause injury.

REMOVE THE TRIM TRAY WHEN OPENING OR CLOSING THE DOOR

When you open or close the door with the trim tray installed, the tray may be removed and fall. This may cause injury or damage. Also, the chips generated by margin cut may jam at the paper exit slot.

PRECAUTIONS

FEATURES

PREPARATION

TROUBLE-
SHOOTING

OTHERS

CONTENTS

SAFETY PRECAUTIONS

DO NOT LEAVE THE PRINTING UNIT OPEN

When the printer is moved with the printing unit open, it may cause injury or damage.

CLOSE THE PRINTING UNIT FIRMLY

Take care not to pinch your hand when closing the printing unit. When the printing unit is not closed firmly, it may open during transportation and it may cause injury or damage.

DO NOT PUSH DOWN ON THE PRINTING UNIT OR THE DOOR

If you push down on the printing unit or the door when they are open, this printer may fall and it can cause damage or injury.

INSTALLATION LOCATIONS

MAINTAIN GOOD VENTILATION

Ventilation slots and holes are provided on the rear and both sides of this printer. Place the printer on a hard and level surface and keep a space between the printer and the walls to ensure proper ventilation. When putting the printer on the system rack, take a space between the printer and the back and sides of the rack.

SUITABLE LOCATIONS

Avoid shaky places or hot-springs areas where hydrogen sulfide and acidic ions are likely to be generated.

AVOID PLACES WITH HIGH HUMIDITY AND DUST

Do not place the printer at a high humidity and dusty locations. They can cause extensive damage to this printer. Avoid places where the printer is likely to be exposed to oily fumes and vapors.

AVOID PLACES LIKELY TO BE EXTREMELY HOT

Places exposed to direct sunlight, or near heating appliances can attain extremely high temperatures, which may deform the cabinet, or can become a prime cause of damage.

PLACE THE PRINTER ON A HORIZONTAL LEVEL

The printer is likely to be affected if it is placed in slanted conditions or in an unstable places.

PROTECT AGAINST DEW FORMATION

In extremely cold regions, if the printer is moved quickly from an extremely cold place to warmer one, dew is likely to be formed. If dew is formed, printing is not possible.

OPERATING AMBIENT TEMPERATURE RANGE

The operating ambient temperature range is 15°C - 30°C (59°F - 86°F) and the humidity of 30% - 80% RH. When using the printer on the system rack, be sure to keep this ambient temperature inside the rack. Depending on the internal temperature, it may take some time to start printing.

FOR LONG OPERATING LIFE

UNSUITABLE MATERIALS FOR THE KODAK 305 PHOTO PRINTER

Coat flaking and deformation are likely to occur if the printer is wiped with chemical dusters, benzene, thinner or any other solvent, if rubber or PVC items are left in contact with the printer for extended duration, or if the printer is sprayed with insecticide.

CARE OF THE CABINET

Unplug and clean with a soft cloth slightly moistened with a mild soap and water solution. Allow to dry completely before operating. Never use petroleum base solutions or abrasive cleaners.

HEAD ABRASION

The thermal head, like the video head, wears out. When it is abraded, it becomes hard to print out fine details of the picture. In such a case, it is necessary to replace the thermal head. Consult with the sales dealer for replacing the head.

CONNECTING DEVICES

Read thoroughly "Operating Precautions" of the instruction booklets for the devices connected with the Kodak 305 Photo Printer. The power cord must be disconnected after printing is over.

CAUTION ON RELOCATING

When transporting this printer, make sure it is not likely to be subjected to impacts. They can be a prime cause for damage. Further, make sure to disconnect the power cord from the power outlet, and the cables from the connected devices.

PRECAUTIONS

FEATURES

PREPARATION

TROUBLE-
SHOOTING

OTHERS

CONTENTS

SAFETY PRECAUTIONS

OTHER CAUTIONS

- Do not pull out nor touch the print paper until printing is completed. It may degrade the print quality or cause an error.
- Dust or other foreign matter adhering to the print paper or the ribbon cassette, or deformation resulting from exposure to extremely low or high temperatures could cause loss of color, uneven color or lines, or wrinkles in the print images.
- Clean the thermal head and platen roller to keep good print quality whenever you replace the print paper and ribbon.
- Depending on the internal temperature, the printer may stop printing temporarily during printing. (The POWER indicator blinks green.) Please wait for the printer to resume printing.
Do not touch the print paper.
- Each time printing is completed, remove the prints. If the prints are not removed, a paper jam may occur.
- Empty the trim tray frequently to prevent jamming the strips at the print outlet.
- The paper tray is used for storing the cut print paper temporarily. The print paper may fall from the tray or may not be stored in the printed order.

NOTE:
YOUR UNDERSTANDING IS REQUESTED FOR THE LOSS OF IMAGES IN MEMORY DUE TO THE SUDDEN OCCURRENCE OF A MALFUNCTION.

PRECAUTIONS

FEATURES

PREPARATION

TROUBLE-
SHOOTING

OTHERS

CONTENTS

SPECIAL FEATURES

SPECIAL FEATURES

AVAILABLE 2 PRINT SIZES

2 printing sizes, 10x15 (4x6") (max. 102 x 152 mm) and 15x20 (6x8") (max. 152 x 203 mm) are selectable.

300 DPI HIGH RESOLUTION

The Kodak 305 Photo Printer has a high resolution of 300 dpi for precise illustrations and sharp photographic images.

LARGE CAPACITY PRINTING

Maximum of 320 prints per roll for 10x15 (4x6") is offered. Large economical print capacity per roll reduces frequency of exchanging paper and ribbon.

HIGH QUALITY PRINTS

The Kodak 305 Photo Printer is a dye sublimation thermal transfer color printer, which produces superior high quality images. It also produces a continuous tone at 256 gradient for each of Y, M, and C.

HIGH SPEED PRINTING

HI-SPEED USB (VER. 2.0) INTERFACE SUPPORTING

MATTE PRINTING OPTION

Note: Matte is only recommended for an even number of 10x15 prints.

Printing an uneven number of prints may lead to lower number of prints produced per ribbon kit.

PRECAUTIONS

FEATURES

PREPARATION

TROUBLE-
SHOOTING

OTHERS

CONTENTS

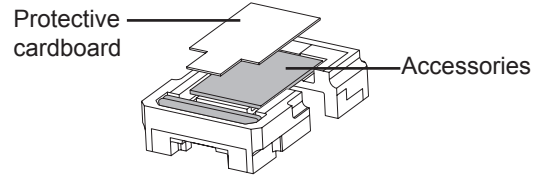
UNPACKING

UNPACKING

Take the printer out of the box by the following procedures. Make sure to check the accessories.

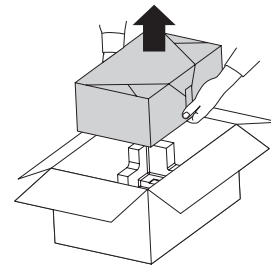
- 1 Open the printer box from the top and remove the top cushion containing the accessories out of the box.**

Remove the protective cardboard and then take the accessories out of the cushion.



- 2 Carefully pull the printer up and out of the box.**

Pull the printer straight up as shown in the figure.



NOTE

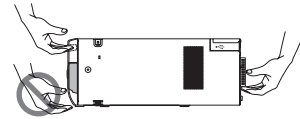
Printer weighs about 12 kg. Handle it with care.

- 3 Unwrap the packing.**

Remove the protective materials for transportation such as protective sheet.

Remove the trim tray before carrying the printer.

Hold the printer by the front and rear handle as illustrated in the drawing.

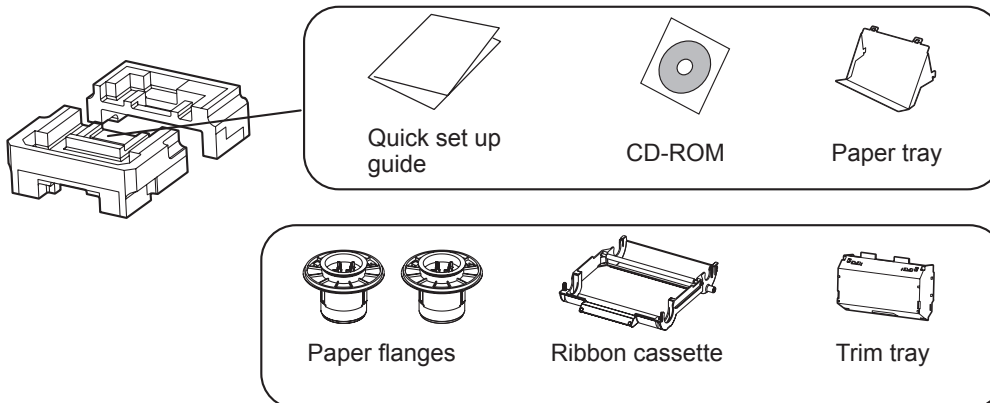


CAUTION

- Do not carry the printer with the trim tray attached and by holding the part under the trim tray. The trim tray may be removed and fall. It may cause injury or damage.
- When the printing unit is not closed firmly or you press the OPEN button accidentally, the printing unit may open. It can cause injury or damage.

CONTENTS

The accessories items are placed in the top cushion. Check all items are included.



These are contained in the printing unit.

Make sure to remove the protective materials from the ribbon cassette and paper flanges.

PRECAUTIONS

FEATURES

PREPARATION

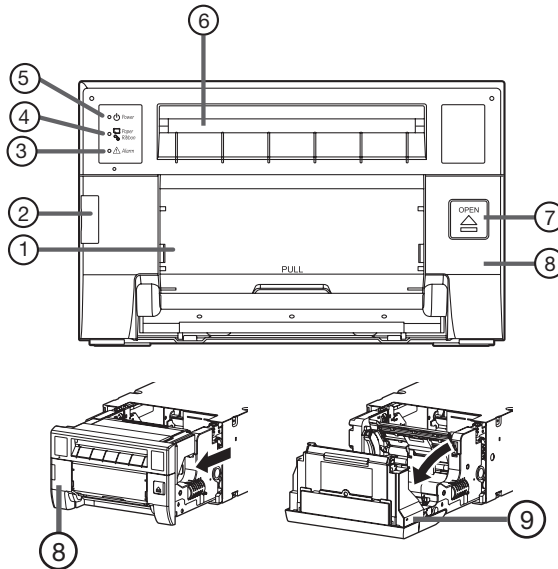
TROUBLE-SHOOTING

OTHERS

CONTENTS

FEATURES AND FUNCTIONS

FRONT PANEL



① TRIM TRAY

Holds the paper strips generated by margin cut. Empty the tray frequently to prevent jamming the strips at the print outlet.

NOTE

Remove the tray before opening the door. If the door is opened with this tray attached, the printer or this tray may be damaged. Do not remove the tray during printing. It may cause a malfunction.

② CONNECTOR COVER

Do not open the cover during normal use.

③ ALARM INDICATOR (▲)

This indicator illuminates or blinks when a paper jam occurs or the door is open. See page 16.

④ PAPER RIBBON INDICATOR (□/∞)

When an error concerning the ribbon or print paper occurs, this indicator illuminates or blinks. See page 16.

⑤ POWER INDICATOR (Ⓛ)

When the power is turned on, the indicator illuminates. It normally illuminates green, however, blinks or illuminates orange depending on the printer status. See page 16.

⑥ PRINT OUTLET

The printed paper comes out here.

⑦ OPEN BUTTON (≡)

Press to release the printing unit out.

⑧ PRINTING UNIT

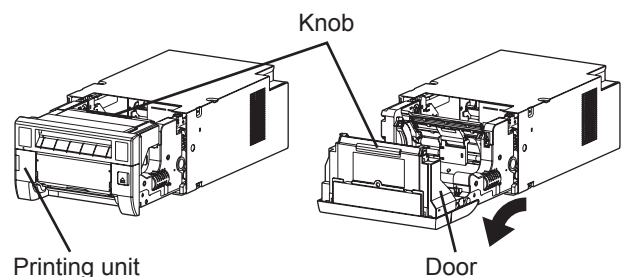
Open to load print paper or ribbon. Press the ⑦ OPEN button to release the printing unit.

⑨ DOOR

Open the door to mount print paper.

OPENING THE DOOR

Pull out the printing unit by pressing the OPEN button and then pull the knob to open the door.



PRECAUTIONS

FEATURES

PREPARATION

TROUBLE-
SHOOTING

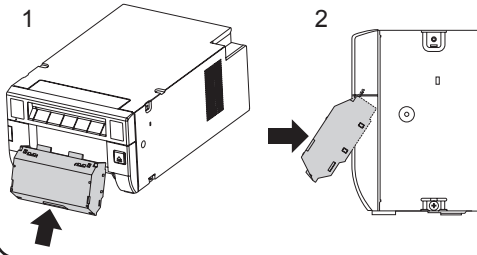
OTHERS

CONTENTS

FEATURES AND FUNCTIONS

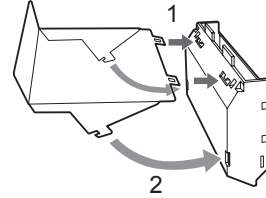
TRIM TRAY

Hook and pull up the trim tray to attach it firmly. Hold and pull the handle on the lower part of trim tray to remove.

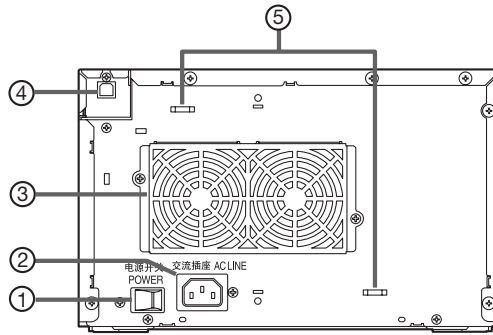


PAPER TRAY

Engage the upper hooks of the tray on the protrusions on the top of the margin cut box (1). Then, secure the tray by engaging the lower hooks in the holes on both sides of the box (2).



REAR PANEL



① POWER SWITCH

Use to switch the power ON and OFF.

② POWER SOCKET (AC LINE)

Use to connect the provided power cord. Insert the cord firmly.

③ FAN COVER / HANDLE FOR TRANSPORTING

When carrying the printer, hold this handle and the front upper part of the printer.

④ USB TERMINAL

Use to connect the USB cable.

[See page 15.](#)

⑤ SECURING HOLES FOR THE CABLE TIE

Use to secure the power cord or USB cable by using the cable ties.

PRECAUTIONS

FEATURES

PREPARATION

TROUBLE-
SHOOTING

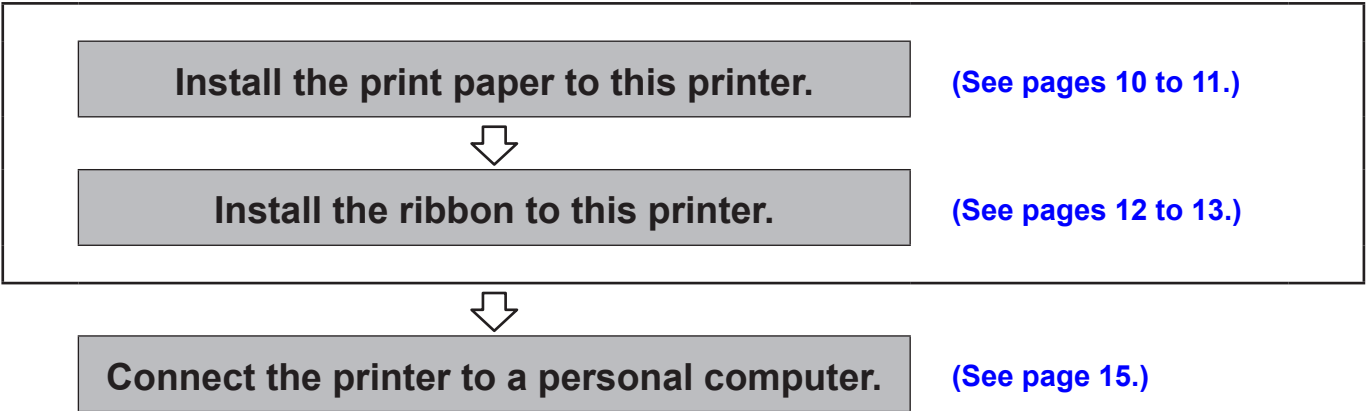
OTHERS

CONTENTS

BEFORE OPERATION

PRINTER SETUP PROCEDURE

Before printing, follow the printer setup listed below.



Make sure to close the printing unit when the setup procedure is completed.

PRECAUTIONS
FEATURES
PREPARATION
TROUBLE-SHOOTING
OTHERS
CONTENTS

PRINT PAPER INSTALLATION

1 Attach the supplied paper flanges to both sides of the print paper.

When you pinch the latches on the paper flange, the stoppers retract into the shaft. Attach the flanges to the print paper with the stoppers retracted. Make sure that the flanges are attached to the print paper securely, and release the latches.

- NOTE**
- Take care not to pinch your fingers.
 - Do not remove the sticker on the print paper roll yet.
 - Do not loosen the paper roll. Any slack in the print paper may degrade the print quality.

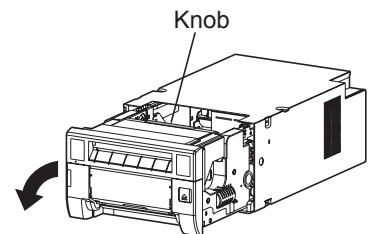
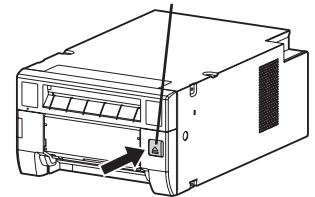
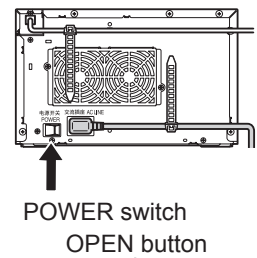
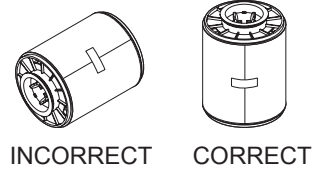
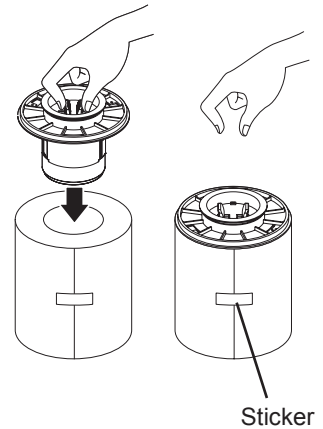
- CAUTION**
- When placing the print paper, keep the print paper upright.
 - When you put the print paper sideways, it may roll and fall. This may cause injury.

- NOTE**
- Fingerprints or dust on the paper's surface may degrade print quality and cause paper jams.

2 Press the POWER switch on the rear panel to turn on the power.

3 After the POWER indicator's color has changed from orange to green, press the OPEN button to release the printing unit out.

4 Remove the trim tray and then pull the knob to open the door.



PRECAUTIONS

FEATURES

PREPARATION

TROUBLE-SHOOTING

OTHERS

CONTENTS