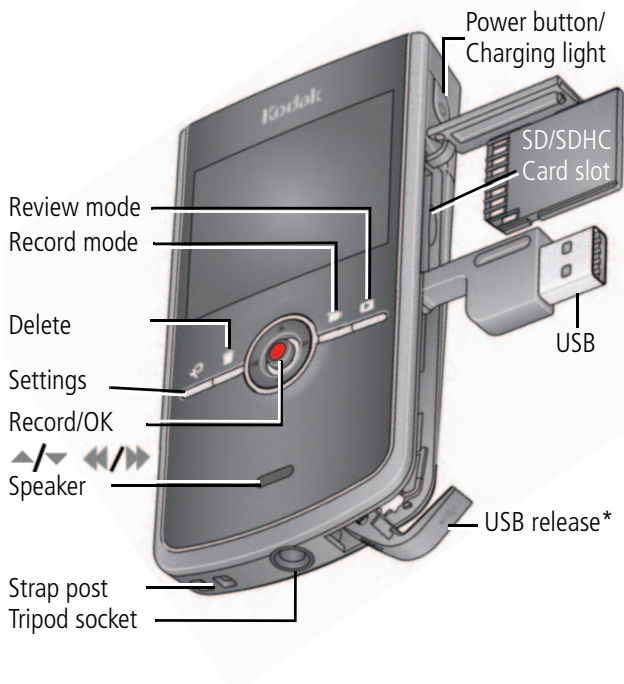

Front view



Get the most from your camera! Download the Extended user guide.

www.kodak.com/go/Zi8support

Back view

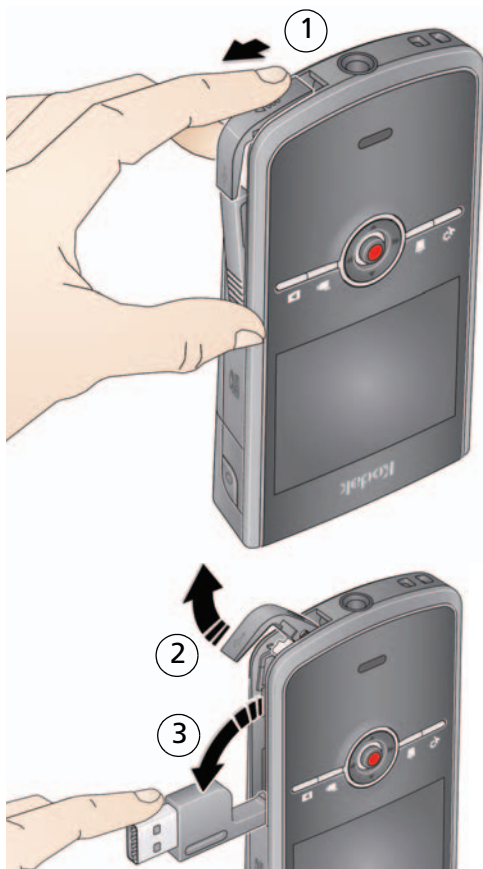


*** Easily access the USB** See page 3

Get the most from your camera! Download the Extended user guide.

www.kodak.com/go/Zi8support

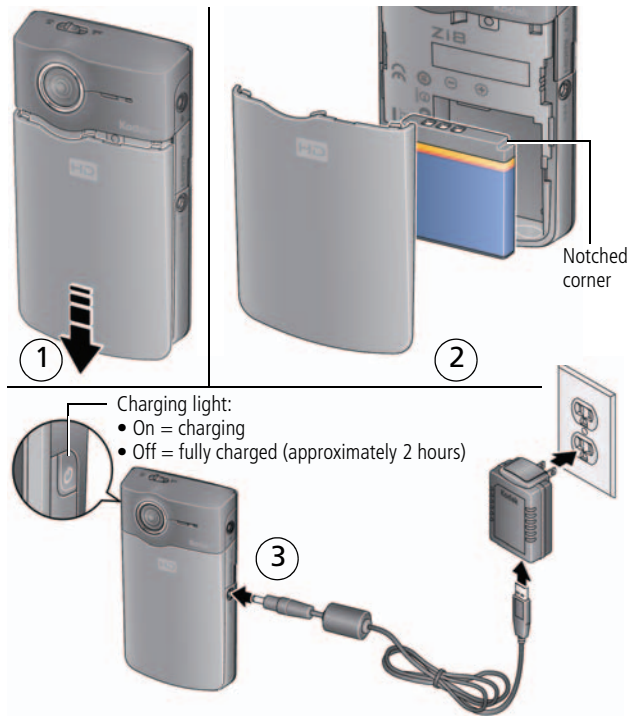
Accessing the USB



1

Using your camera

Charging the battery



More charging options in
the Extended user guide

www.kodak.com/go/Zi8support

Using an (accessory) SD or SDHC Card

Your camera has limited internal memory—perfect for a few practice videos/pictures. We strongly suggest that you purchase an SD or SDHC Card to store more. (Maximum supported card size is 32 GB.)



CAUTION:

A card can only be inserted one way; forcing it may cause damage. Inserting or removing a card when the camera is on may damage the pictures, the card, or the camera.



- 1 Turn off the camera.
- 2 Insert the card.

Purchase accessories

www.kodak.com/go/Zi8accessories

Turning on the camera



Setting the date/time



At the prompt, press OK ●

▲/▼ to change current field

◀/▶ for previous/next field

OK to accept

See the Extended user guide www.kodak.com/go/Zi8support

Recording videos, taking pictures





When you turn on the camera, it's ready to record.

 Start/stop recording

 Zoom in/out

 Enter Recording mode from Review or a menu

 Change recording modes:

1080p	720p/60 fps	720p	WVGA	Still
Best for viewing on an HDTV	Best for sports and action	Best for viewing on a computer, sharing on YouTube™ and Facebook	Best for conserving memory card space; Web-ready	For 5.3 MP pictures
				

See the Extended user guide www.kodak.com/go/Zi8support

Playing videos



Press the Review button for different views:



During playback:

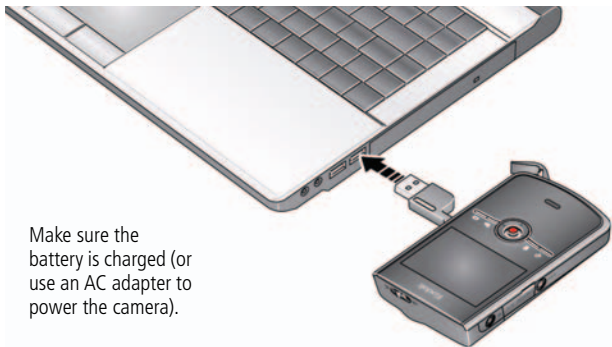
- Press to fast-forward or fast-rewind 2X, 4X, 8X, 16X.
- Press the Review button to play in slow motion.

While paused:

- Press to forward/reverse one frame at a time.

Learn about the optional www.kodak.com/go/Zi8accessories remote control

Transferring, editing, sharing online



Make sure the battery is charged (or use an AC adapter to power the camera).

- 1 Turn off and connect the camera.* (It turns on automatically.)
- 2 If this is the first time you've connected to this WINDOWS OS-based computer, follow the prompts to install ARCSOFT MEDIAIMPRESSION for KODAK Software. You can then transfer and share videos.

Videos and pictures from the Zi8 Camera can be used with the APPLE ILIFE suite of products to edit, personalize, make DVDs, share via YouTube and APPLE Online Sharing Services (IWEB and MOBILEME), or with ITUNES for syncing with IPHONE, IPOD, or APPLE TV.

* Easily access the USB

[See page 3](#)

Get ArcSoft product support

www.arcsoft.com/support

See HD system requirements

www.kodak.com/go/HDsysreq



Deleting videos/pictures

①  Review

②  Locate

③  Delete



④  to highlight a choice,
then press OK 

Previous/
Next



Cancel
(without
deleting)

Delete

Status icons



See important Alert icons

[See page 14](#)

2

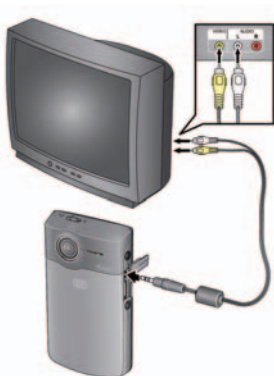
Doing more with your camera

Playing back on a TV

HDMI cable



AV cable



Set TV input to match your connection.
For stereo playback, use the HDMI cable.*

Purchase accessories

www.kodak.com/go/Zi8accessories


Set Video Out (NTSC/PAL)

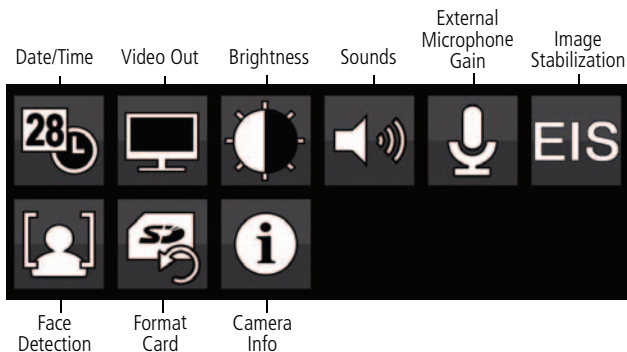
[See page 13](#)

* To record in stereo, use an external stereo mic (see the Extended user guide)

www.kodak.com/go/Zi8support

Accessing the settings menu

Press the Settings  button to access the Settings menu.



Date/Time—Set the date/time.

Video Out—Choose the setting (NTSC, PAL) for your region.

Brightness—Set LCD brightness.

Sounds—Turn sounds On/Off.

External Microphone Gain—Choose sensitivity of an external microphone.

Image Stabilization—Turn on to reduce video blur.








Format Card—Erase, format the card.

Face Detection—Turn face detection on/off.

Camera Info—View firmware, ARCSOFT Software versions.

3

Solving camera problems

Icon	Solution
	<ul style="list-style-type: none"> ■ Low battery. Charge the battery.
 	<ul style="list-style-type: none"> ■ Card or internal memory is nearly full. Transfer videos/pictures to your computer. ■ Corrupt or unusable card. Transfer videos/pictures to your computer, then format (erase) the card in the camera or card reader.
	<ul style="list-style-type: none"> ■ Internal memory is full. Transfer videos/pictures to your computer, or use an SD/SDHC card to take more videos/pictures.
	<ul style="list-style-type: none"> ■ Card is full. Transfer videos/pictures to your computer or use another card.
	<ul style="list-style-type: none"> ■ Unrecognized file. Transfer videos/pictures to your computer.
	<ul style="list-style-type: none"> ■ An error has occurred. Transfer videos/pictures to your computer, then format (erase) the card or internal memory.
Problem	Solution
Videos are choppy or jumpy when played on a computer.	<ul style="list-style-type: none"> ■ Use ARCSOFT MEDIAIMPRESSION Software for video playback. ■ Ensure that your computer meets system requirements. Go to www.arcsoft.com/support.

Problem	Solution
Camera will not turn on.	<ul style="list-style-type: none"> ■ Ensure that the battery is correctly inserted. ■ Charge the battery.
Videos are blurry.	<ul style="list-style-type: none"> ■ Check the Landscape/Macro focus button. ■ Ensure that the lens is clean. ■ Ensure that the subject is at least 1 m (3.3 ft) from camera lens. ■ Turn on Image Stabilization (see page 13).
Videos do not play on a TV.	<ul style="list-style-type: none"> ■ Ensure that an HDMI or AV cable is properly connected directly to the TV input (see page 12). ■ Ensure that the TV menu settings are correct for an HDMI or AV connection. ■ Ensure that Video Out is set correctly (see page 13).
Videos are in low resolution and/or are not saved.	<ul style="list-style-type: none"> ■ If no card is inserted and the camera is powered by the AC adapter, then videos are taken in low resolution and are not saved. (The camera is in Demo mode.) Insert a card or unplug the AC adapter.
ARCISOFT Software issues.	<ul style="list-style-type: none"> ■ Go to www.arcsoft.com/support. (For other applications, go to their support sites.)
Email, write, phone, or chat with Kodak (Chat not available in all languages)	www.kodak.com/go/contact
Get support for your product	www.kodak.com/go/Zi8support
Purchase accessories	www.kodak.com/go/Zi8accessories
Get support for accessories	www.kodak.com/go/support
Download the latest firmware	www.kodak.com/go/Zi8downloads
Register your camera	www.kodak.com/go/register
Get information on ARCISOFT Software	www.arcsoft.com/support

FCC compliance and advisory

This equipment has been tested and found to comply with the limits for a Class B digital device, pursuant to Part 15 of the FCC Rules. These limits are designed to provide reasonable protection against harmful interference in a residential installation.

CE

Hereby, Eastman Kodak Company declares that this KODAK Product is in compliance with the essential requirements and other relevant provisions of Directive 1999/5/E.

MPEG-4

Use of this product in any manner that complies with the MPEG-4 visual standard is prohibited, except for use by a consumer engaging in personal and non-commercial activities.

Canadian DOC statement

DOC Class B Compliance—This Class B digital apparatus complies with Canadian ICES-003.

Observation des normes Classe B—Cet appareil numérique de la classe B est conforme à la norme NMB-003 du Canada.

Australian C-Tick



VCCI Class B ITE

この装置は、情報処理装置等電波障害自主規制協議会（VCCI）の基準に基づくクラスB情報技術装置です。この装置は、家庭環境で使用することを目的としていますが、この装置がラジオやテレビジョン受信機に近接して使用されると、受信障害を引き起こすことがあります。

取扱説明書に従って正しい取り扱いをして下さい。

Korean Class B ITE

8급 기기 (가정용 방송통신기기)	이 기기는 가정용(8급)으로 전자파적합등록을 한 기기로서 주로 가정에서 사용하는 것을 목적으로 하며, 모든 지역에서 사용할 수 있습니다.
-----------------------	--

China RoHS

环保使用期限 (EPUP)

在中国大陆, 该值表示产品中存在的任何危险物质不得释放, 以免危及人身健康、财产或环境的时间期限 (以年计)。该值根据表中所规定的产品正常使用而定。

有毒有害物质或元素名称及含量标识表						
部件名称	有毒有害物质或元素					
	铅	汞	镉	六价铬	多溴联苯	多溴二苯醚
数码摄像机电路板组件	×	○	○	○	○	○
锂电池	×	○	○	○	○	○
交流变压器	×	○	○	○	○	○

○: 表示该有毒有害物质在该部件所有均质材料中的含量均在SJ/T 11363-2006规定的限量要求以下。
 ×: 表示该有毒有害物质至少在该部件的某一均质材料中的含量超出SJ/T 11363-2006规定的限量要求。



HDMI 电缆 (HDMI Cable)



音频/视频电缆 (Audio/Video Cable)

Kodak

Eastman Kodak Company, Rochester, New York 14650

© Kodak, 2009

All screen images are simulated.

Kodak is a trademark of Eastman Kodak Company.

ArcSoft and MediaImpression are trademarks of ArcSoft, Inc.

Apple, iLife, iWeb, MobileMe, iTunes, iPhone, iPod, and Apple TV are trademarks of Apple, Inc.

HDMI, the HDMI Logo, and High-Definition Multimedia Interface are trademarks or registered trademarks of HDMI Licensing LLC.

Facebook and the Facebook logo are trademarks of Facebook, Inc.

YouTube and the YouTube logo are trademarks of YouTube, LLC.

4H6769_en

www.kodak.com/go/zi&support

