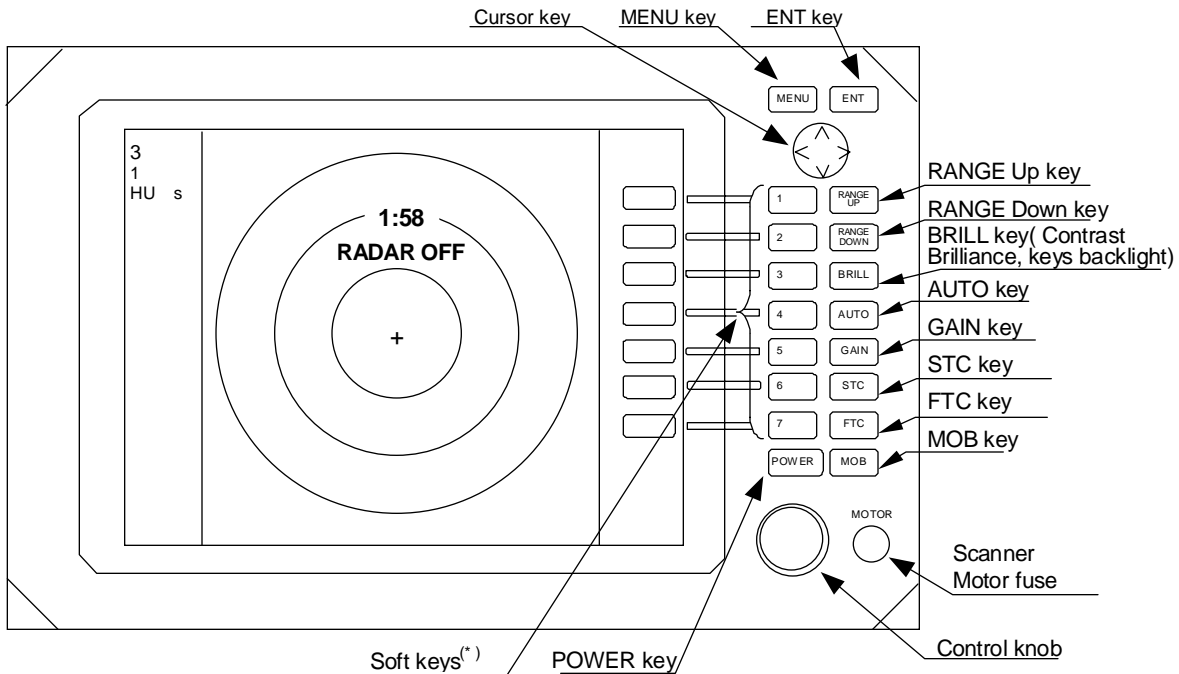


CHAPTER 4. FUNCTIONS AND NAMES

Function and name of each part

The RA40C/41C/42C radar consists of a display unit to display video images on a screen and a scanner unit configured with an antenna to radiate radio waves and other components. The display unit has on its front panel eighteen(18) push-switch keys and one cursor key that lets you move a cursor in any desired direction. A combination of these keys allows you to utilize all functions of your radar, providing a comfortable, easy way to operate.

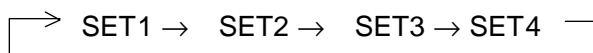
4.1 Key layout



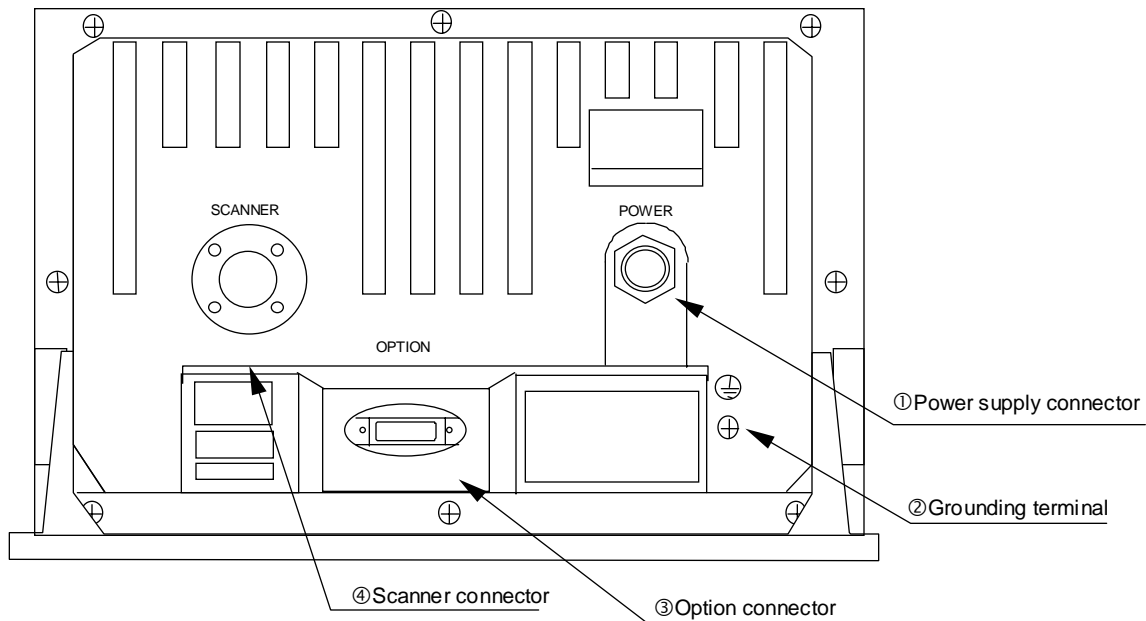
Key No.	SET1	SET2	SET3	SET4
1	EBL1	EBL2	RINGS	PPI
2	VRM1	VRM2	TUNE	PPI/3D
3	VAR RNG	FL EBL2	ST	PPI/PPI
4	TRACK	FL VRM2	ZOOM	PPI/NAV
5	TARGET	GZ	SLEEP	ALL PPI
6	SEL WIN	OFF-C	PICTURE	ALL PPI2
7	NEXT	NEXT	NEXT	NEXT

Tab. 5 Function of soft key (Factory setting)

*Every time Next key is pressed, soft key group switches as follows.



4.2 Rear panel



① Power supply connector

Use this connector to plug in the power supply cable. Standard NMEA interface terminal is included in this connector. Refer to Section 3.7 “Connecting Cables” and Section 3.9 “Connecting External Equipment to Display Unit”.

② Grounding terminal

Use this terminal to connect grounding wire. Refer to Section 3.7 (3) “Grounding wire”.

③ Option connector

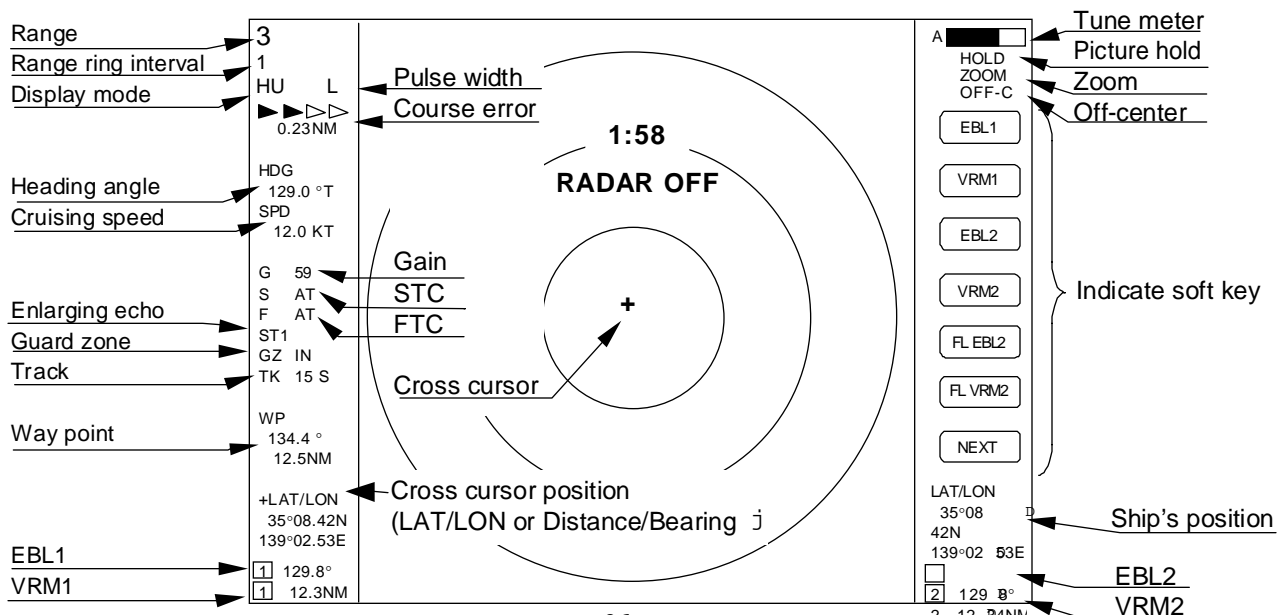
Use this connector to connect NMEA, an external monitor, external buzzer and GYRO I/F. A dedicated cable or dedicated module box is required to connect these pieces of equipment. Refer to Section 3.9 “Connecting External Equipment to Display Unit”.

④ Scanner connector

Use this connector to plug in the inter-connecting cable to connect the scanner unit.

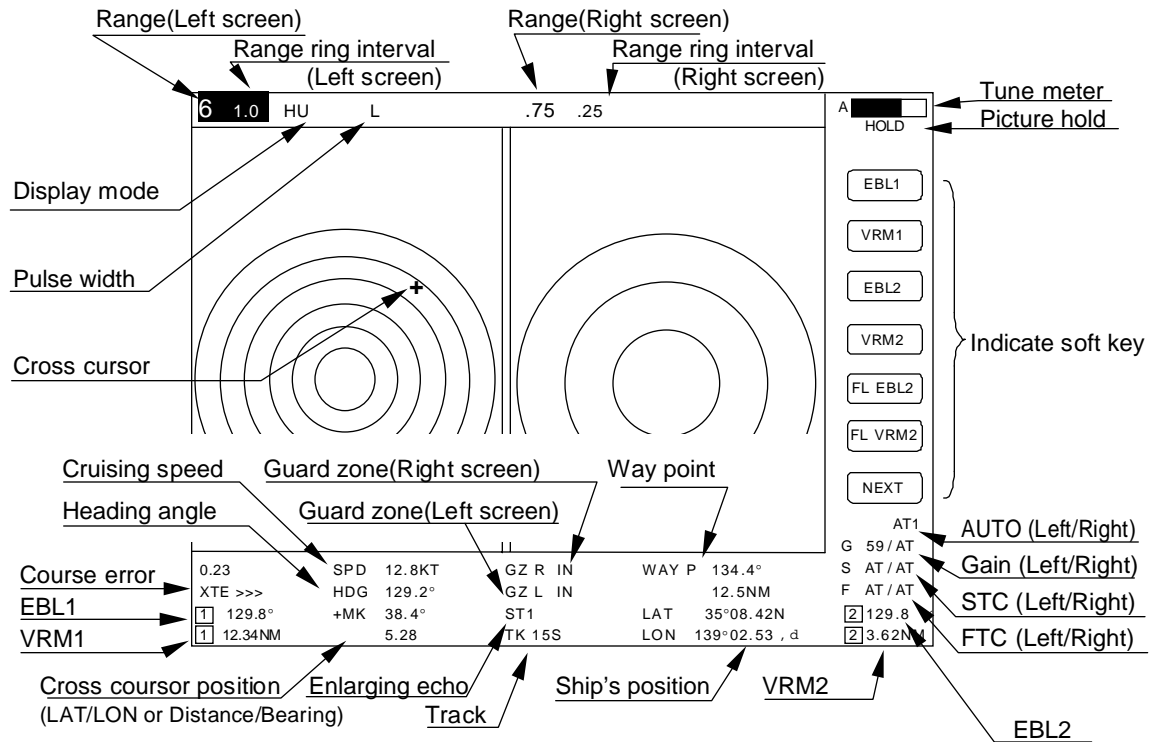
Refer to 3.7 “Connecting cable”.

4.3 Radar screen •Single screen•

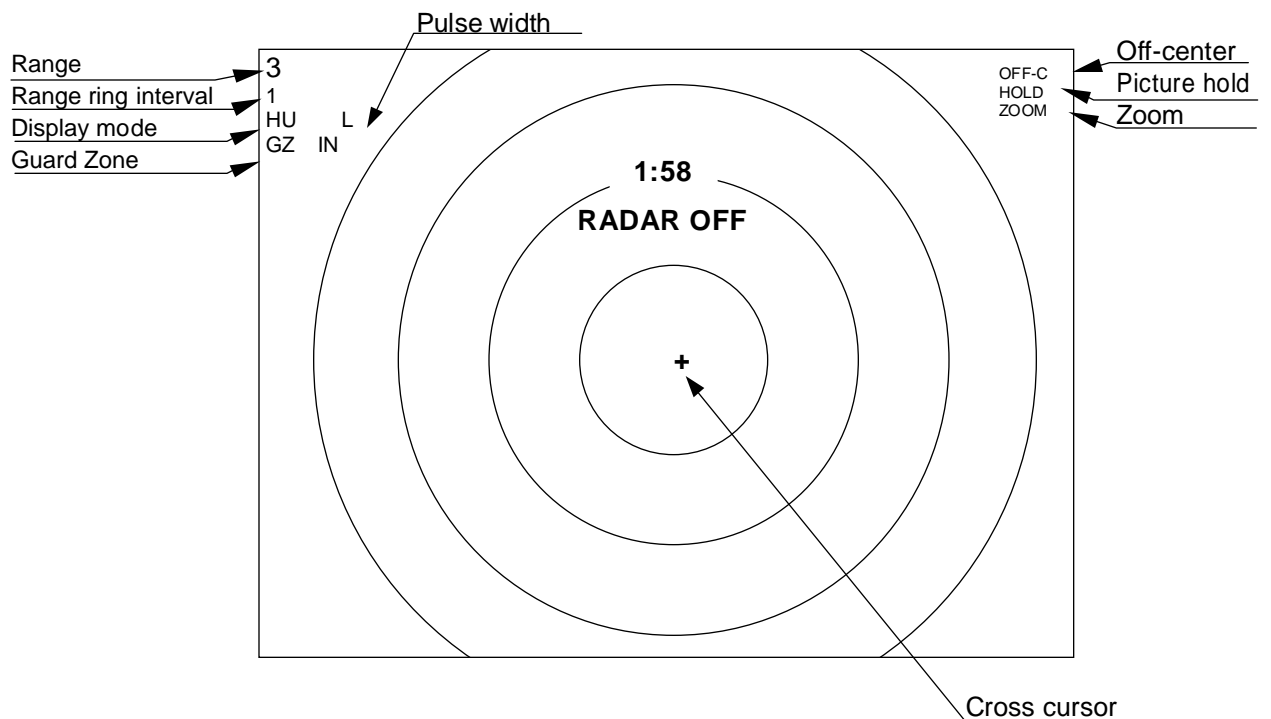


4.4 Radar screen (Dual screen)

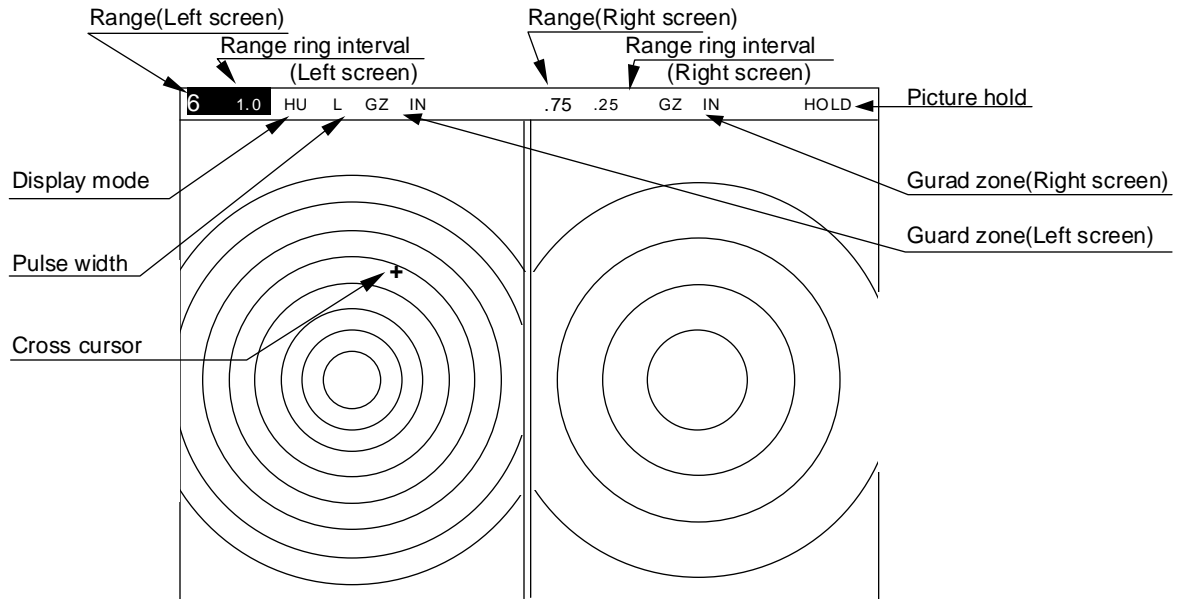
ex) PPI/PPI screen



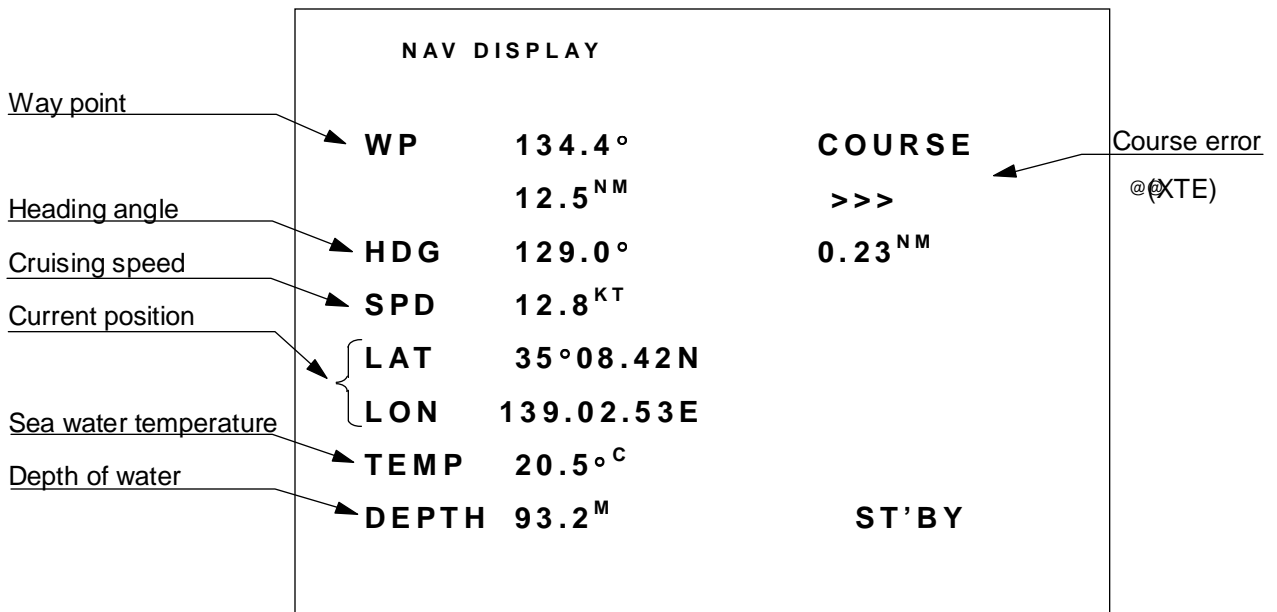
4.5 Radar screen (All PPI screen)



4.6 Radar screen (All PPI /PPI screen)



4.7 Navigation screen



It is necessary that navigation equipment such as a GPS is connected to your radar, this screen displays the position and cruising speed of your ship, seawater temperature, and other navigation information.

Note: Heading angle will be displayed "COG" when Course Over Ground data is used.

Note: Cruising speed will be displayed "SOG" when Speed Over Ground data is used.

Deviation from course	Indication mark
0.00 --	><
0.02 --	> or <
0.04 --	>> or <<
0.08 --	>>> or <<<
0.16 --	>>>> or <<<<

> Indicates starboarding the helm (right)
 < Indicates porting the helm (left)

Tab.6 Indication of deviation from course