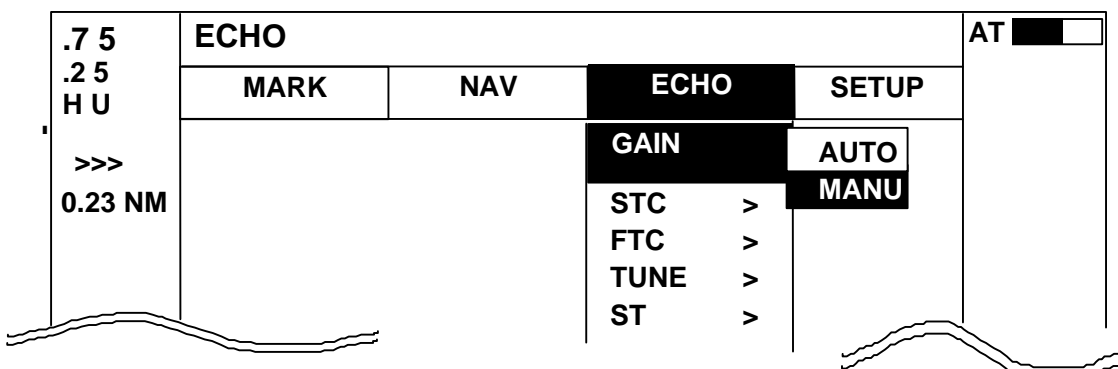
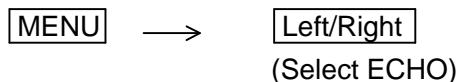


### 5.5.3 Echo Menu

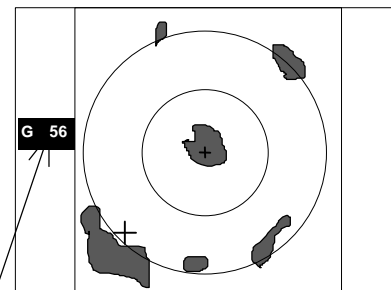
[xxx] = keys to press

Press the "MENU" key and select "ECHO" from the four displayed menus by using the left or right arrows on the cursor pad. The contents of the selected MENU will reveal beneath its name when it's highlighted.

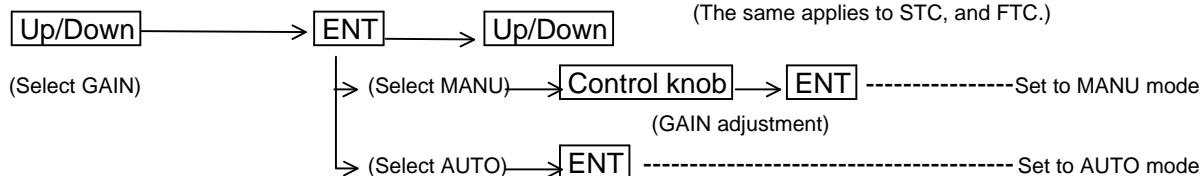


#### 5.5.3.1 Sensitivity adjustment (GAIN)

- (1) Select GAIN from the menu and press "ENT".
- (2) Select MANU from the MANU/AUTO box and press "ENT".
- (3) The current GAIN setting is highlighted in the middle of the left side of the screen. Use the control knob to adjust the gain setting through a range of 0 to 99.
- (4) Press "ENT" to exit the gain setting mode.  
To set the radar to automatic sensitivity adjustment, select AUTO in (2) and press "ENT".

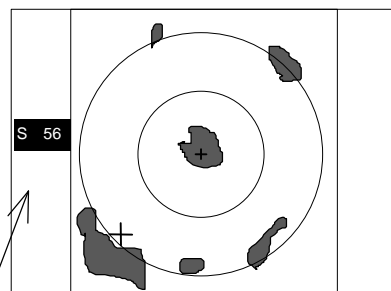


The setting value is displayed during MANUAL operation.  
AT is displayed during AUTO operation.  
(The same applies to STC, and FTC.)

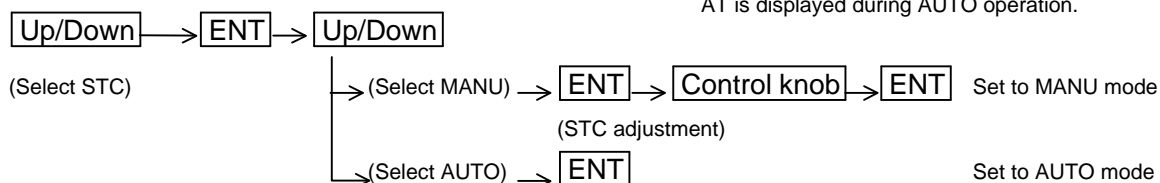


#### 5.5.3.2 Removing sea clutter (STC)

- (1) Select STC from the menu and press "ENT".
- (2) Select MANU from the MANU/AUTO box and press "ENT".
- (3) The current STC setting is highlighted in the middle of the left side of the screen. Use the control knob to adjust the STC setting through a range of 0 to 99.
- (4) Press "ENT" to exit the STC setting mode.



The setting value is displayed during MANUAL operation.  
AT is displayed during AUTO operation.



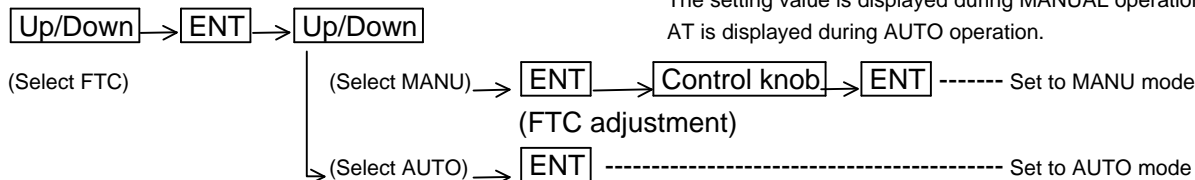
- Note** 1: When you select the MANU mode, GAIN and FTC will be switched to MANU mode, also.  
2: When you select the HARBOR mode, only FTC will be switched to MANU mode

### 5.5.3.3 Removing rain and snow clutter (FTC)

- (1) Select FTC from the menu and press "ENT".
- (2) Select MANU from the MANU/AUTO box and press "ENT".
- (3) The current FTC setting is highlighted in the middle of the left side of the screen. Use the control knob to adjust the FTC setting through a range of 0 to 99.
- (4) Press "ENT" to exit the FTC setting mode.

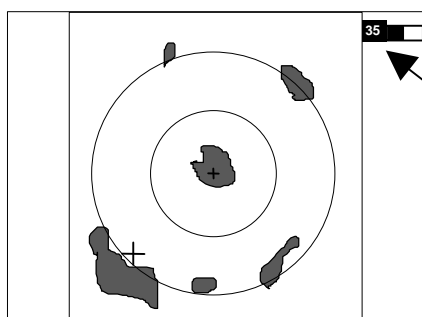
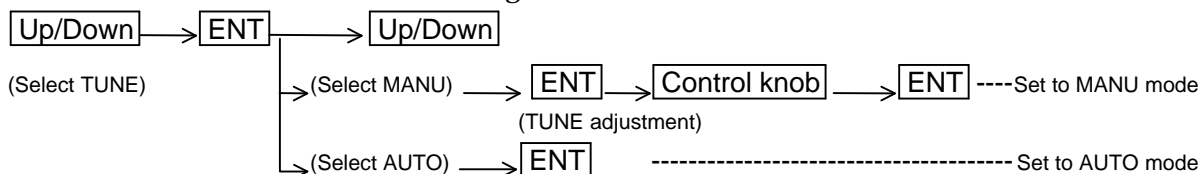


The setting value is displayed during MANUAL operation.  
AT is displayed during AUTO operation.



### 5.5.3.4 Adjusting receiver tuning (TUNE)

- (1) Select TUNE from the menu and press "ENT".
- (2) Select MANU from the MANU/AUTO box and press "ENT".
- (3) The current TUNE setting is highlighted in the upper right corner of the screen. Use the control knob to adjust the setting through a range of 0 to 99.
- (4) Press "ENT" to exit the TUNE setting mode.

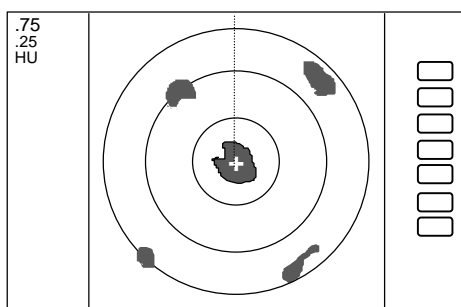
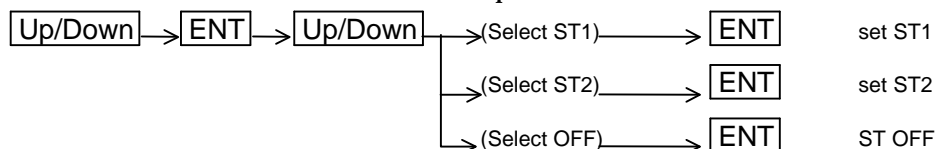


Indicated setting value on manual mode,  
AT on auto mode

### 5.5.3.5 Echo expansion (ST)

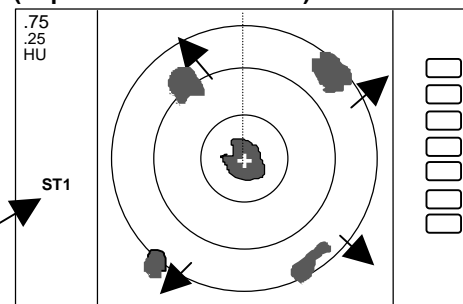
This function expands or stretches the echo in a direction away from your boat. It is used to better define smaller targets. There are two levels of echo expansion, ST1 and ST2.

- (1) Select ST1 from the ECHO menu and press "ENT".
- (2) Select ST1 or ST2 from the box and press "ENT".



ST function is OFF

#### (Expansion rate ST1<ST2)



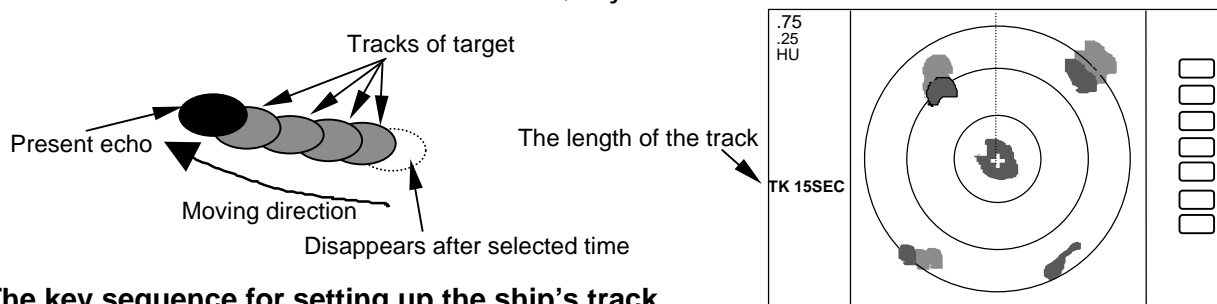
The picture to display echoes expanded  
in the direction of the distance

### 5.5.3.6 Displaying track of targets (TRACK)

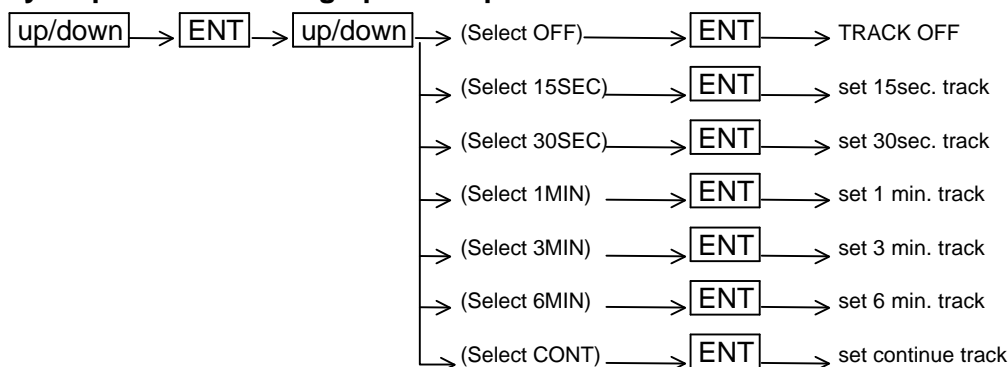
This function allows you to determine the direction a target is traveling relative to your boat by displaying multiple echoes over a pre-determined length of time.

- (1) Select TRACK from the ECHO menu and press "ENT".
- (2) Select 15SEC, 30SEC, 1MIN, 3MIN, 6MIN, or CONT from the box and press "ENT". The selected track time interval will be displayed on the left side of the screen.

Note: When PPI+PPI or ALL PPI+PPI modes are used, only the CONT mode of the TRACK function can be selected.



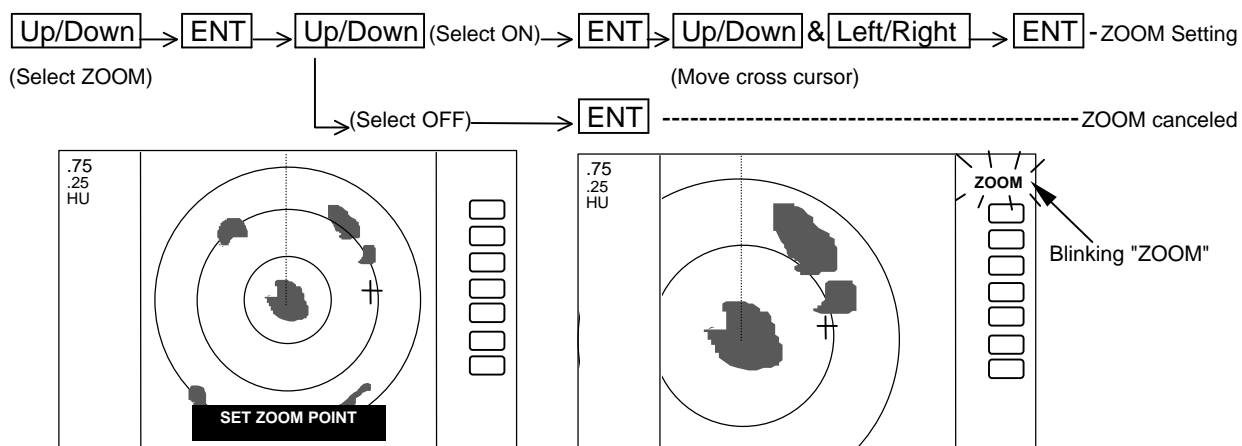
#### The key sequence for setting up the ship's track



### 5.5.3.7 Enlarging a selected area (ZOOM)

The image centered on the cross cursor is doubled in size on the screen.

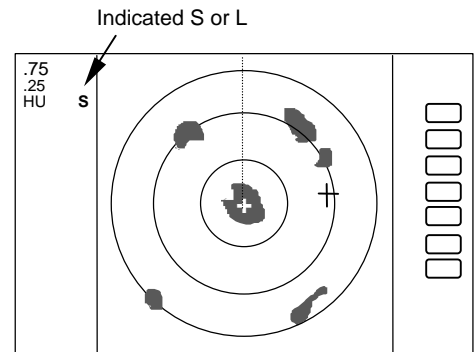
- (1) Select ZOOM from the ECHO menu and press "ENT".
- (2) Select ON and press "ENT".
- (3) A small cross cursor appears in the middle of the screen and "SET ZOOM POINT" are displayed at the bottom. Use cursor pad to move the cross cursor to the point to be magnified and press "ENT". The area around the cross cursor is displayed in 2x magnification. The word ZOOM will blink at the upper right of the screen.  
To cancel the ZOOM function, either select OFF in the menu or press "RANGE UP" or "RANGE DOWN".



- Note
- 1: VRM2 and EBL2 do not follow the ZOOM function during the floating (FL) state.
  - 2: A normal screen returns when you change the range scale.
  - 3: You can only use the ZOOM function on a PPI screen.
  - 4: ZOOM function cannot be used in conjunction with OFF-C.
  - 5: Center of ZOOM can be set anywhere on the screen and in any range.

### 5.5.3.8 Increasing average transmitter power (S/L)

The pulse width is automatically changed as you change the range. However, if you want to increase average transmitter power, you can choose from two pulse widths for each range. The short pulse (SHORT) gives you sharp images with high range resolution. The long pulse (LONG) provides higher average transmit power and shows targets in large size for easy identification although range resolution is reduced.



- (1) Select S/L from the ECHO menu and press "ENT".
- (2) Select either SHORT or LONG from the box and press "ENT".

