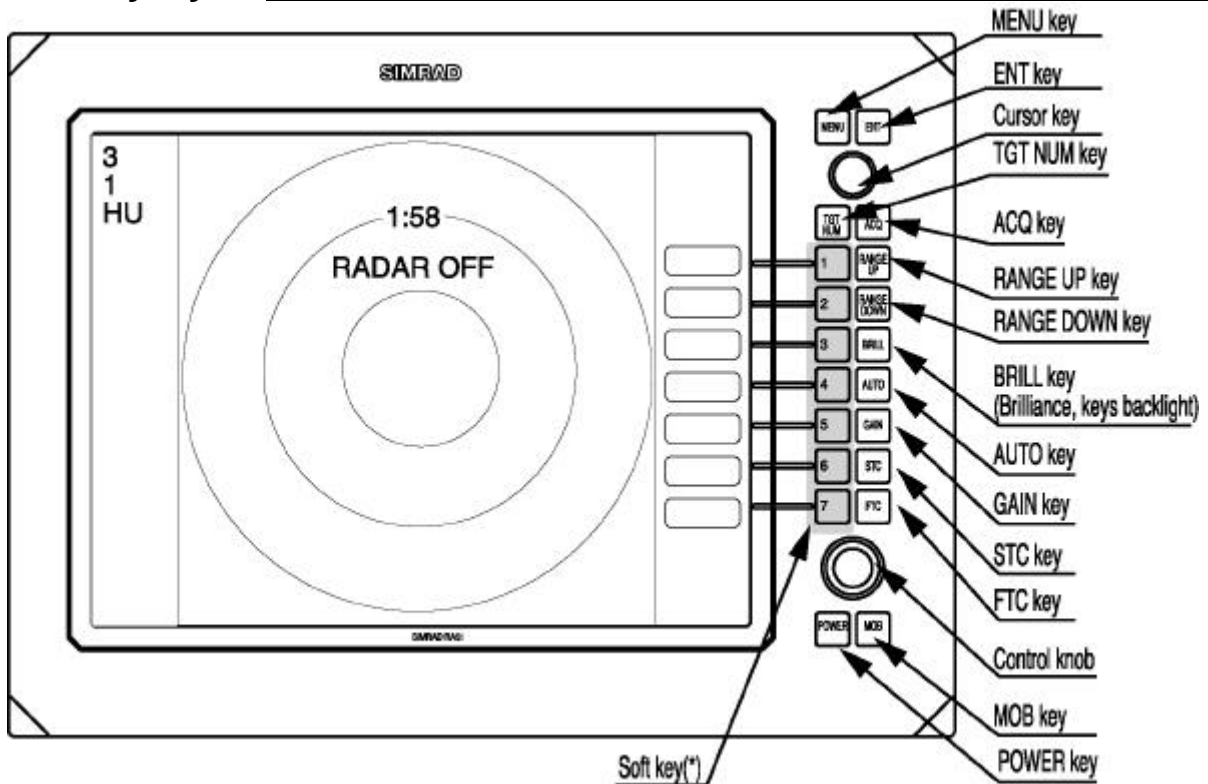


CHAPTER 4. FUNCTIONS AND NAMES

The RA51/52/53/54/55 radar consists of a display and a scanner. The display unit has on its front panel eighteen push-button keys, one rotary control knob and one cursor control touch pad.

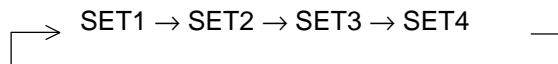
4.1 Key layout



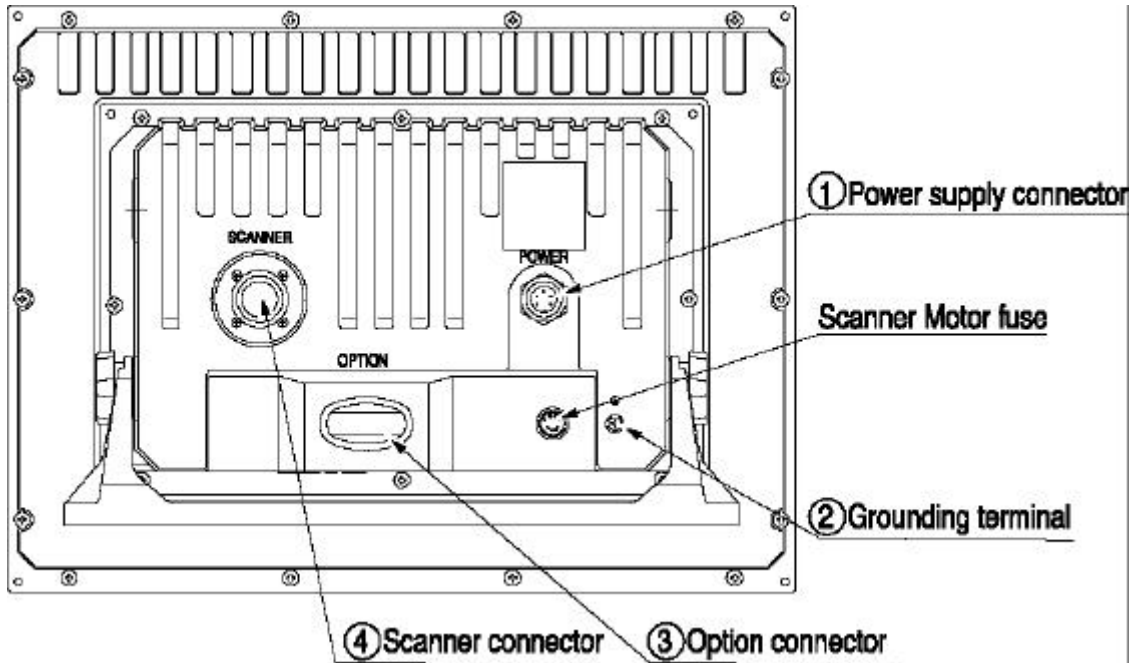
| Key No. | SET1 | SET2 | SET3 | SET4 |
|---------|---------|---------|---------|----------|
| 1 | EBL1 | EBL2 | DATA | PPI |
| 2 | VRM1 | VRM2 | DEL | PPI/3D |
| 3 | VAR RNG | FL EBL2 | ALL DEL | PPI/PPI |
| 4 | TRACK | FL VRM2 | TRACK | PPI/NAV |
| 5 | TARGET | GZ | ZOOM | ALL PPI |
| 6 | SEL WIN | OFF-C | PICTURE | ALL PPI2 |
| 7 | NEXT | NEXT | NEXT | NEXT |

Tab. 5 Function of soft key

*Every time the "NEXT" soft key is pressed, the soft key group changes as follows:



4.2 Rear panel



① Power supply connector

The wires in the cable that attaches to this connector supply both power and NMEA interface data. Refer to Section 3.7.4 "Power Cables" and Section 3.9 "Connecting External Equipment to Display Unit".

② Grounding terminal

Use this terminal to connect grounding wire. Refer to Section 3.7.3 "Grounding wire".

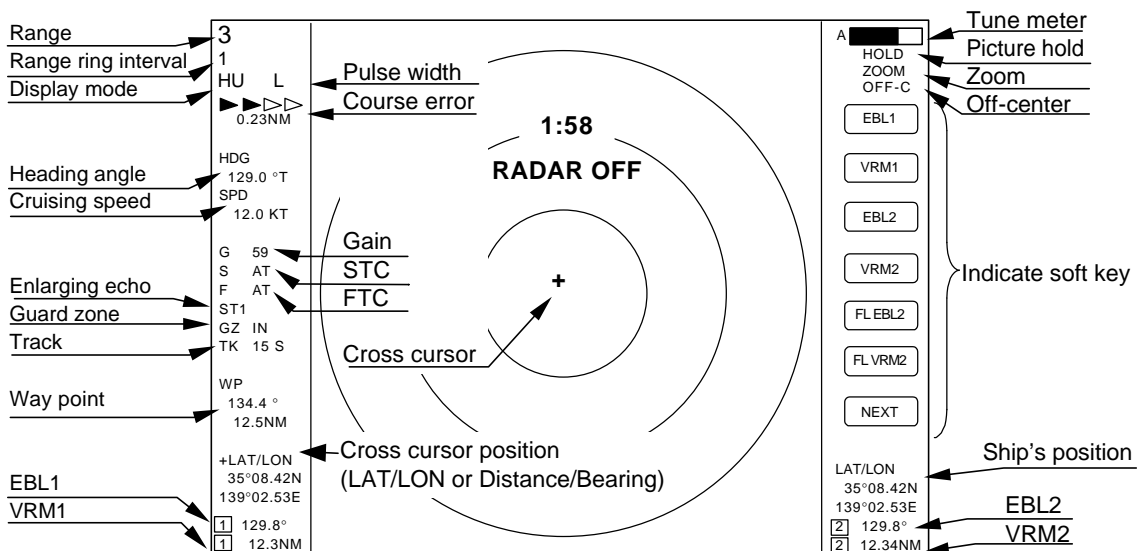
③ Option connector

Connect an NMEA data source, an external monitor, external buzzer or GYRO I/F here through an optional connector or using a junction box. Refer to Section 3.9 "Connecting External Equipment to Display Unit".

④ Scanner connector

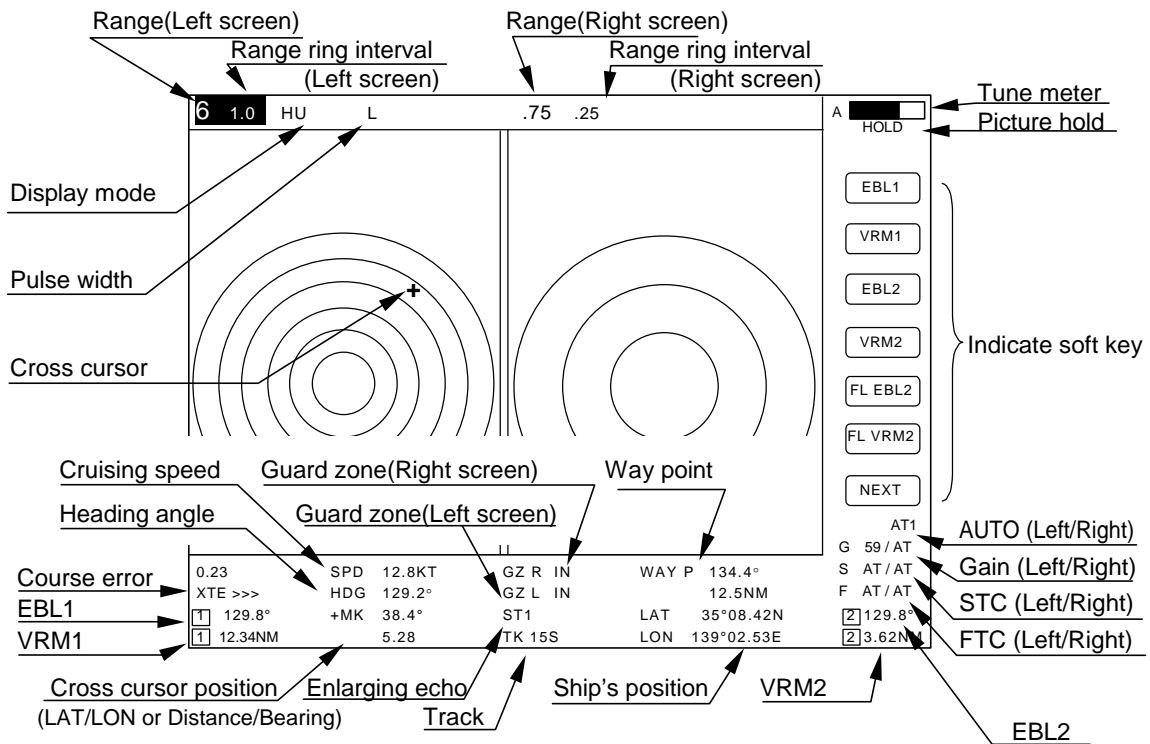
This connector is for the cable that runs between the display and the scanner. Refer to 3.7 "Connecting cable".

4.3 Radar screen (Single screen)

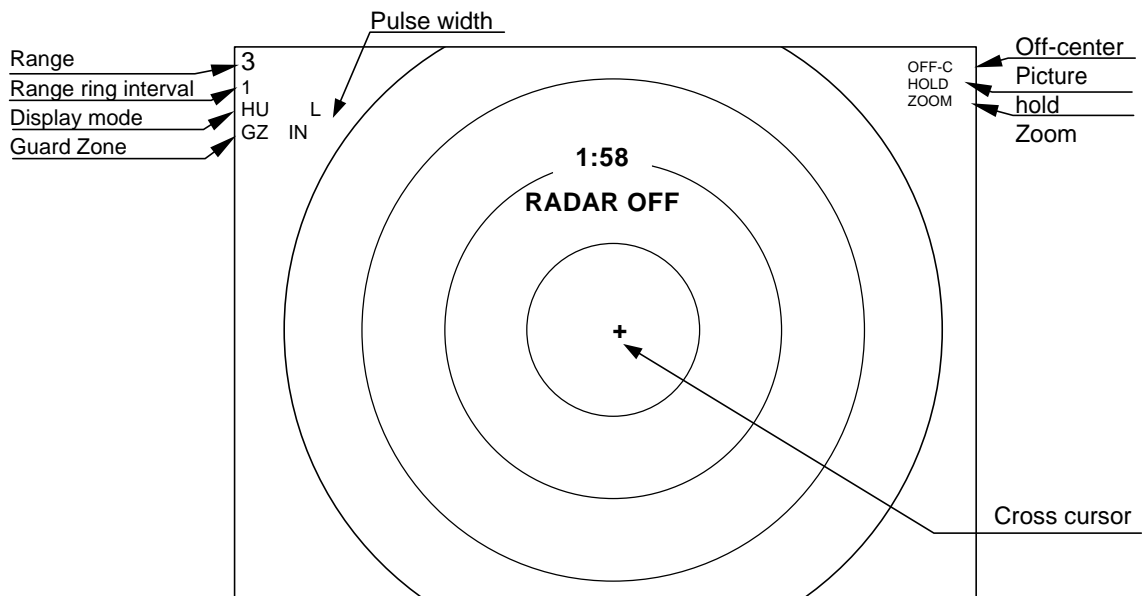


4.4 Radar screen (Dual screen)

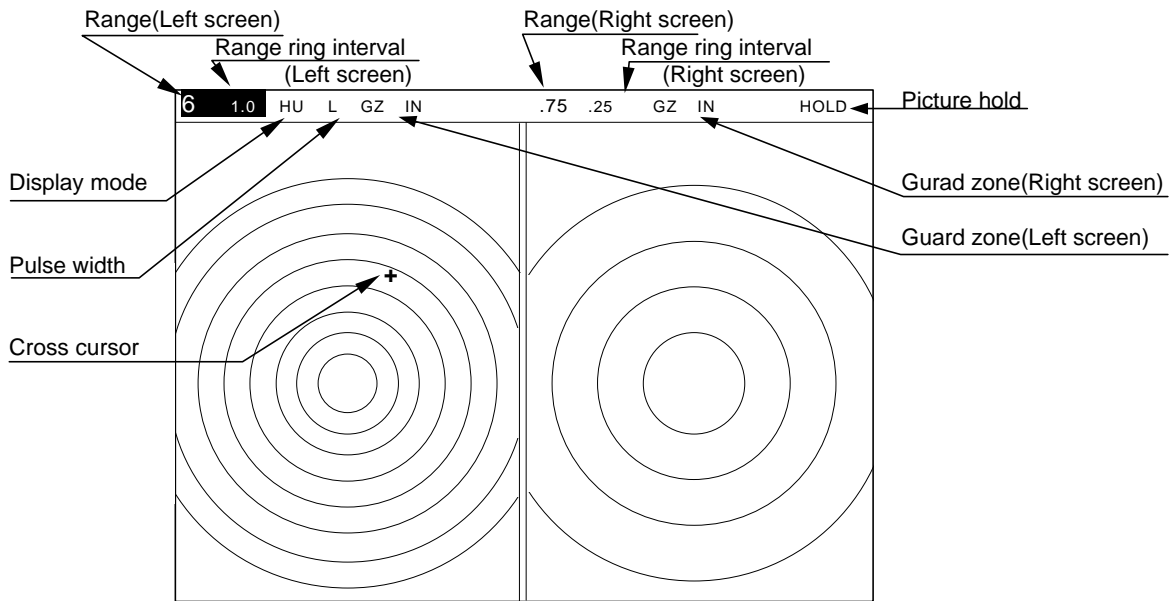
Ex) PPI/PPI screen



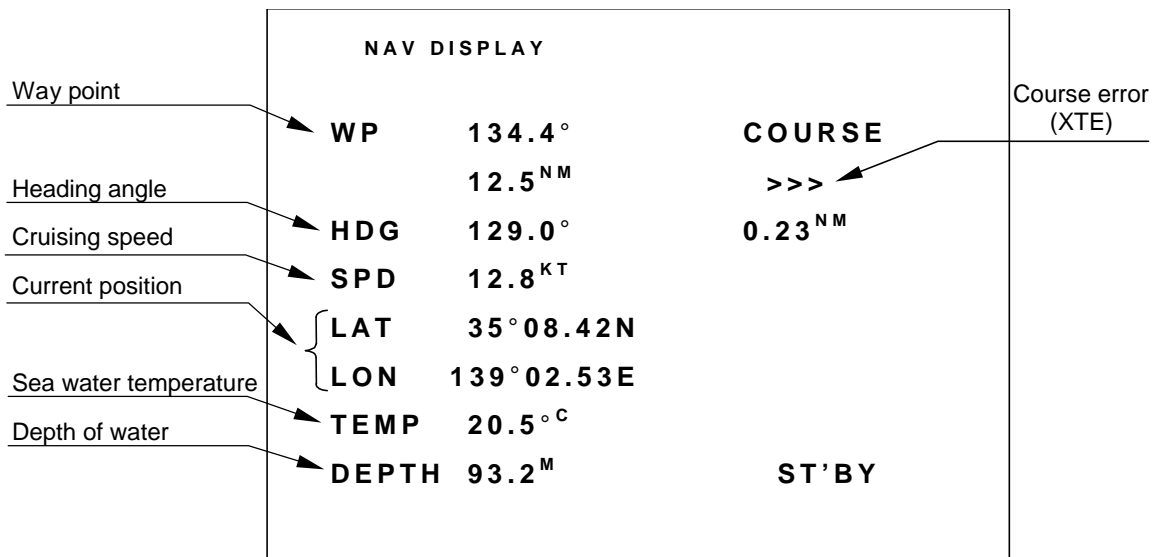
4.5 Radar screen (All PPI screen)



4.6 Radar screen (All PPI /PPI screen)



4.7 Navigation screen



To show the NAV display, you need to connect a GPS receiver to your radar. The NAV display shows the position and cruising speed of your ship, seawater temperature, and other navigation information.

Note: Heading angle will be displayed "COG" when Course Over Ground data is used.

Note: Cruising speed will be displayed "SOG" when Speed Over Ground data is used.

| Deviation from | Indication mark |
|----------------|-----------------|
| 0.00 -- | >< |
| 0.02 -- | > or < |
| 0.04 -- | >> or << |
| 0.08 -- | >>> or <<< |
| 0.16 -- | >>>> or <<<< |

> Indicates course is starboard of helm (steer right)
 < Indicates course is port of helm (steer left)

Tab.6 Indication of deviation from course