

kogan

Kogan 4G Wifi Home Router

KAWN4G680

USER MANUAL



Table of Contents

In the Box.....1
Specifications.....1
Overview.....1
Getting Started.....3
Connection & Configuration.....4
Troubleshooting & FAQ.....7

In the Box

Inspect the product as soon as you receive it and contact Kogan Support immediately if any item is incorrect, missing or damaged.

- 1 x 12 V/1 A Power adapter
- 1 x Ethernet Cable
- 1 x Quick Installation Guide
- 1 x Warranty Card
- 1 x SIM Card

Specifications

Input: 100-240V~50/60Hz 1A

Output: 12V 1000mA

system requirements:

The following operating systems are supported:

- Windows XP, Windows Vista, Windows 7, Windows 8, Mac OS X 10.5, 10.6, 10.7 and 10.8 with latest updates

The following browsers are supported:

- Internet Explorer, Firefox, Google Chrome, Safari, Opera

Overview


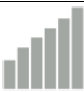







1. SIM Card Slot
2. WPS Button
3. Reset Button
4. DC Jack Socket
5. RJ45 Ports



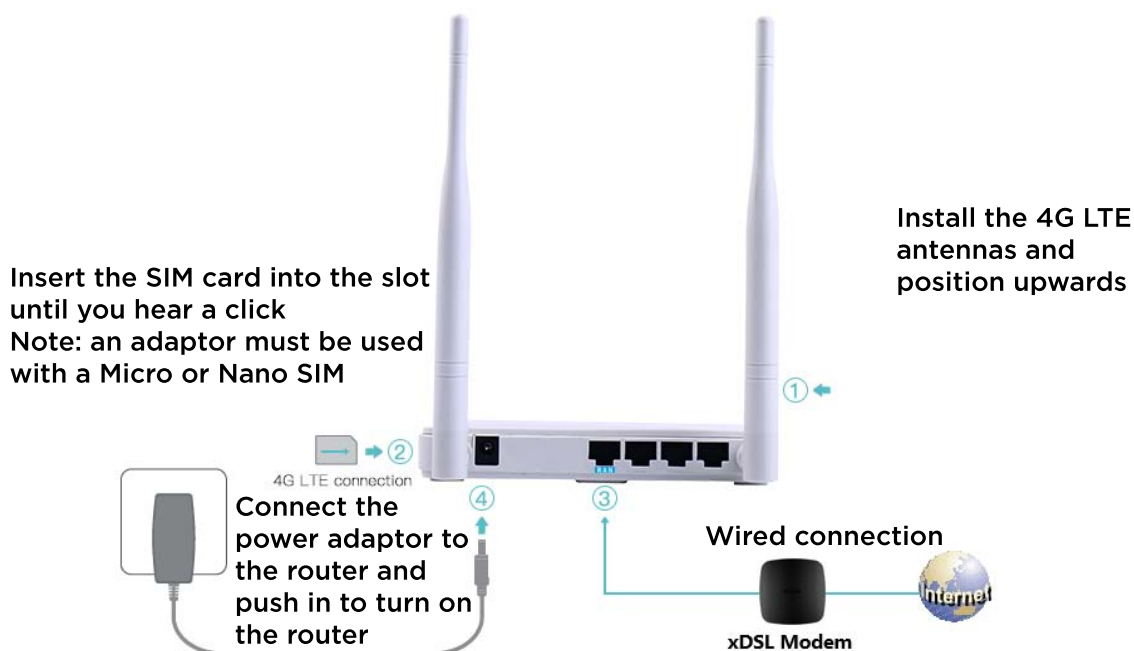
1. WPS Hold down for 5-7 seconds enables the WPS function.
2. SIM card slot Only for 2FF (Standard SIM): please insert SIM card according to the instruction near the SIM card slot. (If you only have Micro or Nano SIM card, please use SIM card adapter.)
3. Reset Hold down with a needle for 15 seconds to reinitialise.
4. DC Jack slot Used to connect to the included power adapter.
5. RJ45 Port Used to connect to wired devices.



LED Indicator	Status / Colour	Description
	Off	The device is turned off or not connected properly
	Solid on / Green	The device is functioning normally
	Off	There is no mobile network connection
	Solid on / Green	LTE signal is good
	Fast Blinking / Green	LTE signal is bad
	Slow Blinking / Green	LTE signal is very poor
	Off	PPP connection is down
	Solid on / Green	PPP connection is up
	Blinking / Green	PPP has been established but is not connected
	Slow Blinking / Green	PPP connection is idle (on demand mode)
	Blinking / Green	The device is transmitting or receiving data
	Off	LAN/Wan port is not connected
	Solid on / Green	LAN/Wan port is not transmitting or receiving data
	Blinking / Green	LAN/Wan port is transmitting or receiving data
	Off	The wireless function is disabled
	Solid on / Green	The wireless function is enabled
	Off	The WPS feature is disabled
	Solid on / Green	The WPS feature is enabled
	Off	No USB device is connected
	Solid on / Green	A USB device is connected properly

Getting Started

Hardware connection



Internet connection

You can access Internet via 4G LTE (SIM card required).

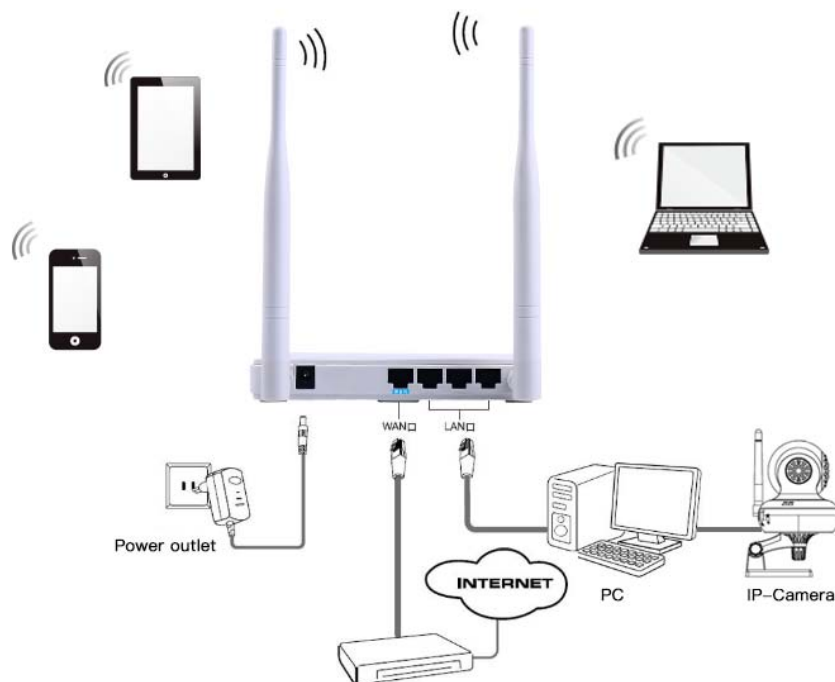
Method 1: Connect the device to the Internet via SIM card.

1. Install the antennas.
2. Insert the SIM card.
3. Connect the included power adaptor.



Method 2: Connect the device to the Internet via Ethernet cable

1. Install the antennas.
2. Insert the Ethernet cable with to the WAN port (must have Internet connection).
3. Connect the included power adaptor.



Verify that the device is connected to the internet.
 Verify the hardware connection by checking the LED status.
 When this LED lights up, Internet access is available.

Tips

1. Do not power up the device before you insert the SIM card.
2. Ensure the device is in a suitable environment: Operation Temperature: 0~35°C, Storage Temperature: -20~60°C.
3. If your carrier supports VOLTE function, you can use voice service by connecting a desk phone to the RJ11 port and a SIM is used for internet access.

Connection & Configuration

Method 1: Wired connection

Simply connect your PC to a router LAN port via the included Ethernet cable.

Method 2:

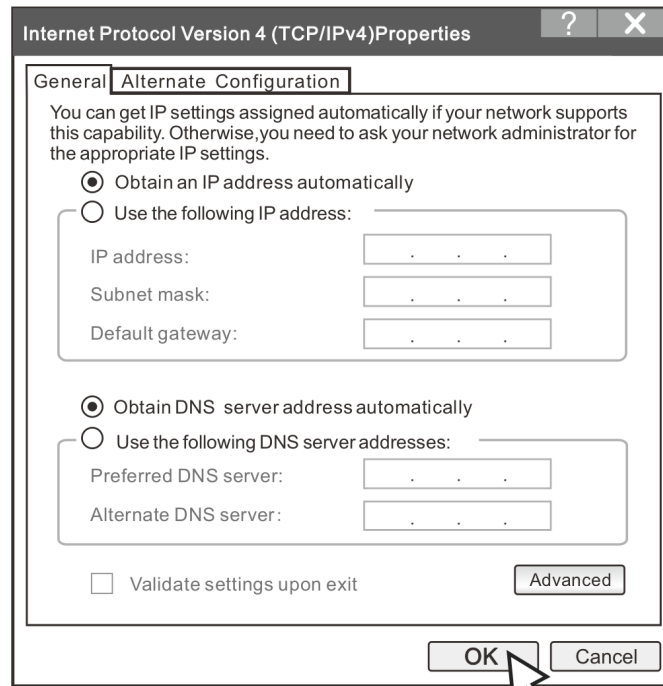
Search for the SSID (Wi-Fi network name) and enter the Wi-Fi key. These are noted on a label on the bottom of the device.



Note: The steps are shown in Windows 7, but will be similar in other operating systems.

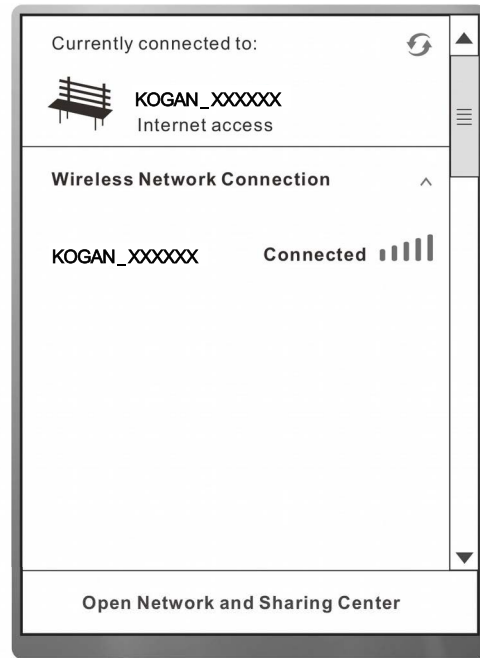
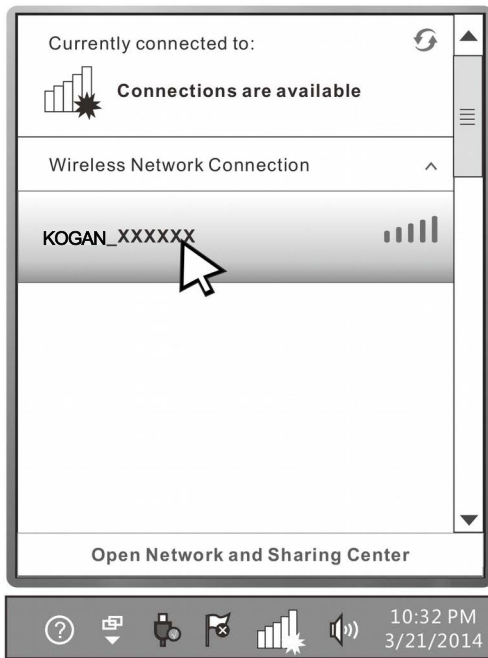
Your computer must have a network adapter installed.

1) Go to Internet settings on your device. e.g.: Network > Properties > Change adapter settings.

Select wireless connection and click Properties > Internet Protocol Version (TCP/IPv4) > Obtain an IP address automatically > Obtain DNS server address automatically.



- 2) Click the network connections icon (e.g.  or  in Windows).
- 3) Double-click your SSID and follow the onscreen steps to add a network.

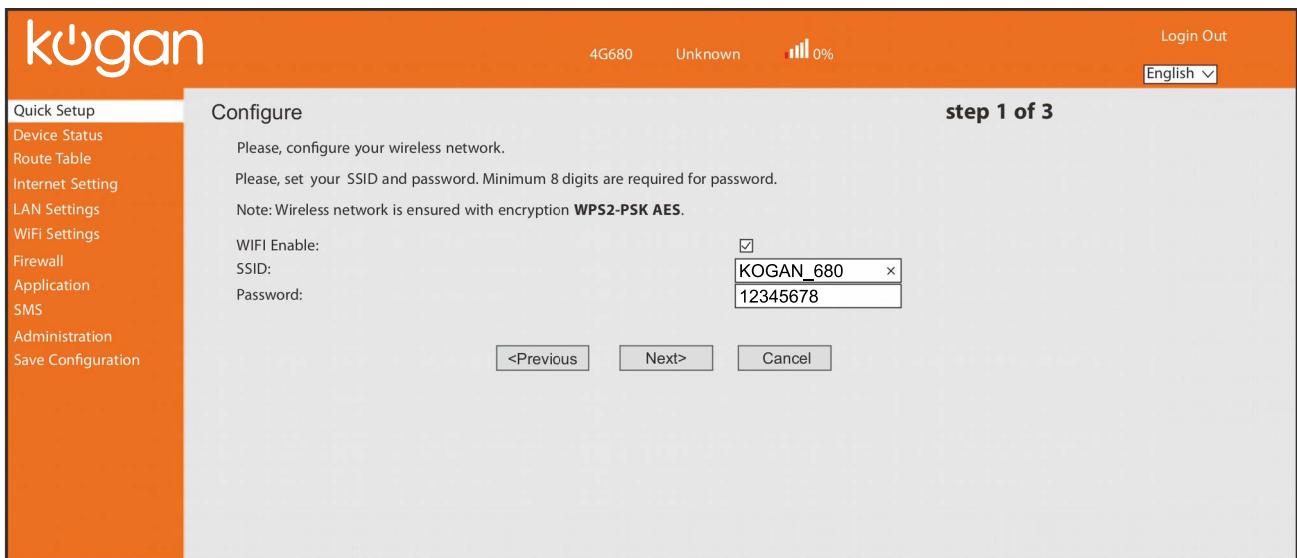


Configuration

- 1) Open a web browser, enter **192.168.1.1** in the address bar and press **Enter**. Enter the default login username and password (**admin** for both).

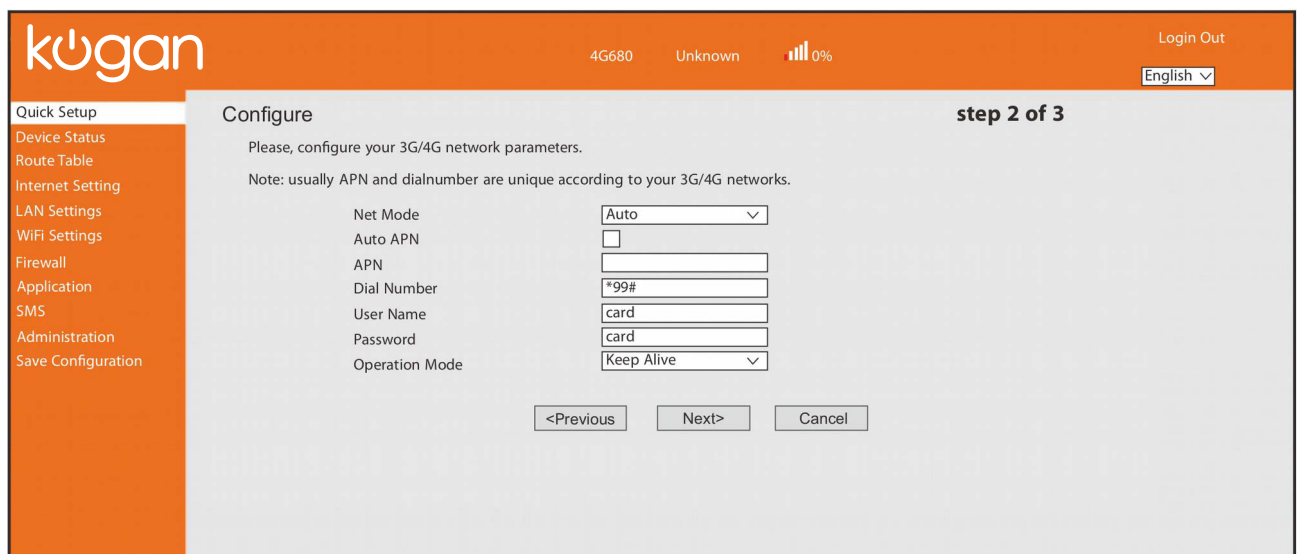


2) Optional: Click Quick Setup to enter the basic Wi-Fi settings configuration page: the Wi-Fi function is enabled, the default SSID is KOGAN_XXXX and Pre-shared key (Wi-Fi password) is on the bottom panel label. You can modify your SSID and Pre-shared key (Wi-Fi password) here.

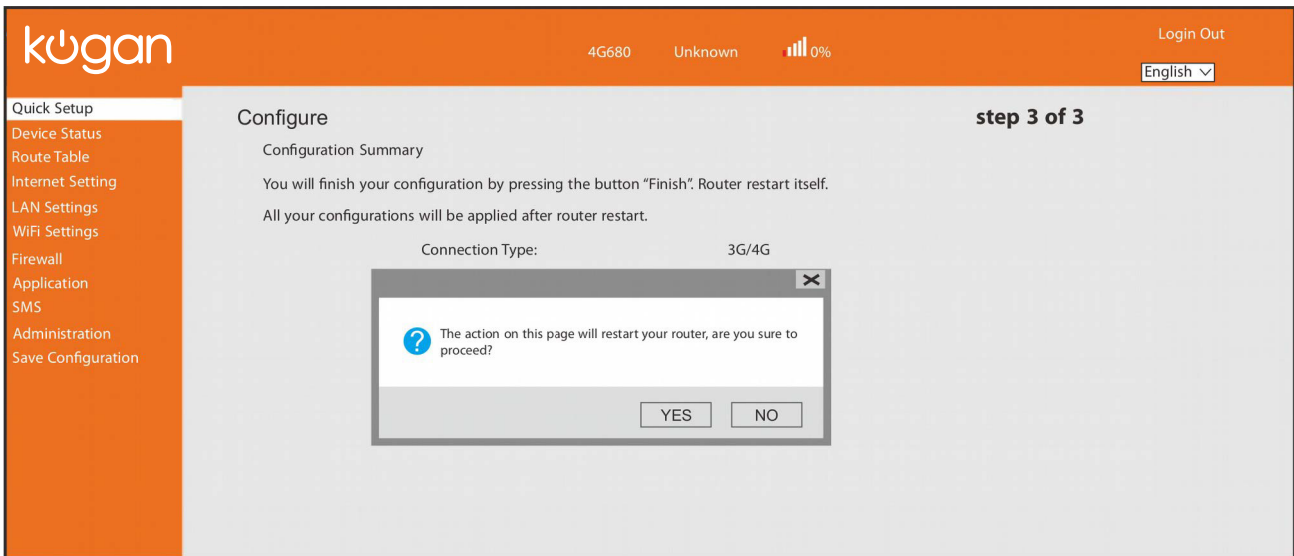


3) The device will usually auto-detect the correct settings for your SIM. If there is no Internet access, follow the steps below:

- Select Quick setup > Next, disable “Auto APN” and enter the APN, Protocol, username and password (contact your service provider if you cannot locate these details). Click OK > Apply.



- Click “Finish” and restart the router as below. You will now be able to access the Internet.



Troubleshooting & FAQ

<p>Forgot settings, SSID, username or password</p>	<p>Hold down Reset button for 15 seconds to restore factory settings. Reconfigure as per “Connection & Configuration” using the default SSID from the label on the bottom of the product and default username/password (both admin).</p>
<p>Cannot access Internet</p>	<ul style="list-style-type: none"> • Verify your USIM/SIM has sufficient balance if prepaid • Verify the APN settings (you can contact your carrier for assistance). • Verify the connection to your router (including range if wireless) • Verify the password is correct. • Forget network and login again. • Verify you enter the default PIN code if your service provider has provided you with a PIN code. • Check settings in firewall or turn off (for troubleshooting only: do not browse without security settings).

User manual is subject to change without notice. For the latest version of your user manual, please visit <https://www.kogan.com/usermanuals/>