



KONICA MINOLTA

magicolor 7450



Technical Guide



Copyright © 2006 KONICA MINOLTA PRINTING SOLUTIONS U.S.A, INC.
KONICA MINOLTA and the KONICA MINOLTA logo are trademarks or registered trademarks of KONICA MINOLTA HOLDINGS, INC. magicolor is a trademark or registered trademark of KONICA MINOLTA PRINTING SOLUTIONS U.S.A., INC. PageScope is a trademark or registered trademark of KONICA MINOLTA BUSINESS TECHNOLOGIES, INC. Simitri is a trademark or registered trademark of KONICA MINOLTA BUSINESS SOLUTIONS, INC. All other trademarks or registered trademarks are the property of their respective owners.

May 2006



magicolor 7450 



Contents

Introduction	1
Specs at a Glance	2
Target Markets	3
Key Features	4
Powerful Performance	4
Excellent, Accurate Color	6
Simple Operation	8
Camera Direct Photo Printing	8
Toll-Free Technical Support	9
Engine	10
Type	10
Duty Cycle	10
Print Speeds by Page Size and Media Type	10
First-Page-Out Time	10
Weights and Dimensions	11
Operating Environment Conditions	11
Controller	12
Type	12
Processor	12
Printer Memory	12
Resolution and PhotoART	14
Compatibility	14
Languages	15
Connectivity	15
Camera Direct Photo Printing	17
USB Host Port with PictBridge Compatibility	17
Media Handling	18
Standard Media Handling	18
Optional Media Handling	18



Print Media	19
Paper Path	19
Imageable Area	20
Supported Media Sizes	20
Advanced Document Processing	22
Special Media Density Adjustment	23
Consumables	24
User-Replaceable Supplies	24
Simitri Polymerized Toner	24
Consumable Yields	25
Supplies Monitoring	26
Printer Management	29
Convenient Printer Management Tools	29
Printer Drivers	29
PageScope Management Suite	31
Status Monitor	33
Print Monitor	34
Download Manager	34
Printer Control Panel	34
Electronic User Documentation	35
Color Control	36
Professional Color Tools	36
Automatic ICC-Based Color Matching	36
Host-Based ICC Color Matching	37
Dynamic Contone Screening	37
Custom Color Controls	38
PANTONE Color Look-Up Tables	38
Enhanced Automatic Image Density Control (eAIDC)	39
Options & Requirements	40
Duplex Option	40
Lower Feeder Unit	40
Banner Feed Tray	40
Caster Base	40
Memory	41
Hard Disk	41
Extended Warranties	41



magicolor 7450



Introduction

The magicolor 7450 produces large-format output with photorealistic quality.

When image is everything and performance counts, rely on the extraordinary image quality and robust processing power of the large-format KONICA MINOLTA magicolor® 7450. Perfect for all design and business printing needs, the magicolor 7450 has a 733 MHz G4 CPU and custom acceleration hardware for fast document processing. It also features exceptional print quality, with 9600 x 600 dpi-class resolution and precise ICC-based color matching for true-to-life color documents.

With its PostScript® 3 and PCL® 6 printer emulations and a high-performance Emperon controller, the magicolor 7450 provides multi-platform compatibility for Windows®, Macintosh®, and Linux® users. And, a Gigabit Ethernet® interface enables this workhorse printer to rapidly process jobs from the fastest network connection available. The magicolor 7450 also boasts a print speed of 24.5 ppm in color and b&w, with a first-page-out time of 11.4 seconds in color and 8.2 seconds in b&w. All with the ease of use and cost-effectiveness built into every KONICA MINOLTA printing solution.

Diverse media handling capabilities let you print on a variety of media types from recycled paper to glossy and thick stock. This robust color laser also handles a wide range of media sizes, from 3.54" x 5.5", to 12.25" x 18" for full-bleed tabloid designs, on up to banner size (12.25" x 47.24").





Specs at a Glance

An overview of the features of the magicolor 7450.



Large-format, photorealistic quality color laser

Print Method	Electrophotographic color laser
Processor	PowerPC, 733 MHz G4
Print Speed	Up to 24.5 ppm color and black & white (letter/A4)
Resolution	Up to 9600 x 600 dpi-class
Duty Cycle	Up to 120,000 letter/A4 prints/month
Memory	256 MB DDR SDRAM std., 1024 MB max.
Standard Interfaces	Gigabit Ethernet (10/100/1000BaseTX), USB 2.0, Parallel, USB 1.1 Host Port (for camera direct photo print)
Media Sizes	Up to banner size (W) 3.55"-12.25" (90 x 311 mm), (L) 5.50" - 47.24" (140 - 1200 mm)
Media Weight	Up to 141 lb. Index (256 g/m ²)
Media Input	250-sheet multipurpose cassette 100-sheet manual feed tray Optional 500-sheet cassette (up to three) Optional automatic duplexer Optional banner feed tray
Media Output	350-sheet face-down tray
Print Media Types	Plain/recycled paper, glossy stock, thick stock, transparencies, postcards, laser-quality labels, postcards, envelopes
Software Utilities	Driver support for Windows Server 2003/ XP/2000/NT4/Me/98SE, Macintosh OS X (v10.2+)/OS 9 (v9.1+), and Linux Red Hat 9/SuSE 8.2; PageScope™ Management Suite; Print Monitor; Status Monitor; Download Manager
Color Control	Enhanced Automatic Image Density Control (eAIDC) built-in calibration; Automatic ICC-based color matching; ICC Device Profiles; Dynamic Contone Screening; SWOP, Commercial, Eurocolor, TOYO, DIC, and SNAP press emulations; PANTONE® Color tables
Language Compatibility	PostScript 3, PCL 6, PDF 1.4, JPEG/TIFF Direct Print
Typefaces	137 PostScript, 93 PCL, 10 line printer
Warranty	One-year onsite



magicolor 7450



Target Markets

A robust performer for business and design applications.

Designed to support the powerful graphics applications used by creative professionals, the magicolor 7450 is also a high-performance printer for large volume applications. It's a perfect fit for:

- ☐ Marketing Departments
- ☐ Print Shops
- ☐ Retail and SMB Businesses
- ☐ Professional Photographers
- ☐ Realtors
- ☐ Engineering Firms
- ☐ Financial Institutions



Use this versatile color laser to create:

- | | |
|------------------------------|------------------------|
| ■ 11" x 17" Newsletters | ■ Color Transparencies |
| ■ Pre-press Proofs | ■ Spreadsheets |
| ■ Email and Web Pages | ■ Sales Sheets |
| ■ Color Banners | ■ Client Proofs |
| ■ Promotional Publishing | ■ Reports |
| ■ Full-bleed Tabloid Designs | ■ Photo Prints |
| ■ Posters | ■ Daily Correspondence |





Key Features

This performance powerhouse has a built-in productivity pack.



Powerful Performance

Emperon Controller Technology

With state-of-the-art Emperon controller technology, the magicolor 7450 is built for productivity. When the printer is installed in a demanding environment, the Emperon controller provides greater document processing efficiency with minimal network impact.

Emperon provides:

- ☐ Compatibility with the most popular printing languages—PostScript and PCL
- ☐ Compatibility with multiple operating environments, including Windows, Macintosh, and Linux
- ☐ Multi-protocol print serving with TCP/IP, EtherTalk, NetWare, and NetBIOS/NetBEUI support
- ☐ Excellent color quality with precise color matching and halftone screening that delivers best-in-class 9600 x 600 dpi-class resolution
- ☐ Easy printer management with the PageScope suite of management utilities
- ☐ Seamless integration of document output management with a consistent user interface and functionalities across all the KONICA MINOLTA new-generation products



24.5 ppm
black-&-white and
full color

Fast, Productive Printing - Why Wait?

There are numerous features packed into the magicolor 7450 that make it a plow-ahead performer. For business-critical situations in which processing performance and fast output are a necessity, the magicolor 7450 stands firm as a true workhorse printer.

- ☐ **Single-pass technology:** Get the same 24.5 page-per-minute speed whether a document is text-only, or text mixed with full-color graphics and images, or graphics-only.
- ☐ **First page out in 11.4 seconds:** Why wait for your first page? When the printer is in an idle, ready state, you can expect the first page of a color document to print in just 11.4 seconds. Subsequent pages follow at up to 24.5 ppm. This translates to sheer business productivity.



magicolor 7450



- ❑ **733 MHz G4 PowerPC processor:** When a file is sent to the magicolor 7450, it's this powerful CPU, working in conjunction with the Emperon-based controller, that processes the document for quick delivery.
- ❑ **Acceleration ASIC chip:** The magicolor 7450 includes an ASIC chip that offers processing acceleration through hardware assistance for complex operations such as contone screening, color transformations, and image processing.
- ❑ **Gigabit Ethernet:** To quickly pull jobs from high-speed, 1000 Mbps business networks, the magicolor 7450 has a built-in 10/100/1000BaseTX Ethernet interface.
- ❑ **DDR SDRAM:** The printer's also equipped with 256 MB DDR SDRAM, that's upgradable to 1024 MB. DDR memory modules effectively double file data throughput and consume less energy.

Compatibility for Multi-User Environments

Adding to the magicolor 7450's "productivity pack" is its ability to support mixed network environments and its versatile software for managing printer operations in these environments.

- ❑ **Windows, Macintosh, and Linux:** The magicolor 7450 has multi-platform support for Windows, Macintosh, and Linux users. This allows simultaneous printing from diverse business workgroups.
- ❑ **PostScript 3 and PCL 6 languages:** For seamless document printing, the magicolor 7450 is multi-lingual. It has PostScript 3 and PCL 6 emulations, and corresponding printer drivers, to efficiently process jobs from popular business and design programs.
- ❑ **Gigabit Ethernet:** To support traditional, Fast Ethernet, and 1000 Mbps Ethernet networks, the magicolor 7450 includes a high-speed Gigabit Ethernet port.
- ❑ **Printer Management Tools:** The magicolor 7450 includes some of the industry's most *comprehensive* and *convenient* printer management tools.

There is software specifically for network administrators to manage and configure KONICA MINOLTA printers remotely, integrate them into corporate Enterprise Management Systems, and even manage these printers using other manufacturer's administration software. And there are tools especially for general printer users, designed to make monitoring and printing documents "stay-at-your-desk" convenient.



Management Tool	Intended User	Function
■ Driver (Windows/Mac/Linux)	General User	Provides a graphical method for selecting general and advanced print options
■ Front Keypad / Control Panel	Network Admin General User	Reveals at-a-glance supply levels; provides an easy-to-follow menu for viewing and changing printer options
■ PageScope Web Connection	Network Admin General User	Supplies real-time printer information from the convenience of your desktop via a web browser
■ PageScope Direct Print	General User	Enables you to print PDF and TIFF files simply by dragging the file to the PageScope Direct Print icon on the user desktop
■ PageScope Net Care	Network Admin	Provides remote installation, management, and configuration of KONICA MINOLTA printers via the web
■ PageScope Network Setup	Network Admin	Manages KONICA MINOLTA printers over TCP/IP or IPX/SPX
■ PageScope Plug and Print	Network Admin	Automatically detects new printers on the network and creates a print object on the Windows print server
■ PageScope Peer-to-Peer Printing	General User	Makes it possible to print directly (without using a print server) to the network printer in Windows Me/98
■ PageScope EMS Plug-ins	Network Admin	Integrates the printer into 3rd-party Enterprise Management software packages
■ Web JetAdmin Plug-in	Network Admin	Allows KONICA MINOLTA printers to be managed from HP Web JetAdmin management software
■ Status Monitor	General User	Resides conveniently on the desktop and provides job status and supply level information
■ Print Monitor	Network Admin	For direct printing from the host, over TCP/IP, to the printer

Excellent, Accurate Color

Excellent performance is just one of the magicolor 7450's strong points. Superb color quality is another trait this printer exhibits. Through a combination of contone print resolution, KONICA MINOLTA's own Simitri™ Polymerized Toner formula, and adjustable color controls, the magicolor 7450 delivers excellent, accurate, consistent color for business reports, sales materials, correspondence, photographs, and more.

9600 x 600 dpi-class PhotoART Contone Quality

The magicolor 7450's high-quality resolution generates photo-quality output with great detail and character in fine lines and halftones by printing 600 x 600 x 4 dpi resolution (600 x 600 dots per inch with 4 bits per pixel). Also known as 9600 x 600 dpi-class PhotoART contone quality, it provides 4 bits (16 levels) of gray or color per pixel rather than only 1 bit (2 levels) per pixel found on many other printers. Contone technology works by varying toner volume and toner density. Instead of producing only one size dot, the magicolor 7450 adjusts dot size, producing more shades of color for best image quality.



magicolor 7450



Simitri Polymerized Toner

The magicolor 7450 features KONICA MINOLTA's Simitri Polymerized Toner technology, which uses tiny, uniform-size particles that are encapsulated in a proprietary compound to improve fusing on most media—even coarse, recycled paper. As a result, prints are more durable, with images and text that don't smear or fade. In fact, the output for KONICA MINOLTA color laser printers has been tested for longevity up to 100 years.

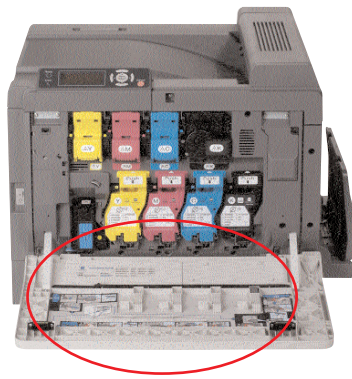
Simple Operation

It's not uncommon for people to classify this level of printer as difficult without ever laying hands on the product. Some high-performance printers do sacrifice ease of use for high production. However, that's not the case with the magicolor 7450. Wrapped around its fast processor and 24.5 ppm speed is a user-friendly package. From setup to everyday operation, this printer's equipped to keep it simple.

- ❑ **Front-access to supplies:** When supplies do run low, replacement is easy. Toner cartridges are accessible from the front of the printer, and the inside of the front panel displays toner replacement guidelines.
- ❑ **Auto-install software:** The Software Utilities CD-ROM features an auto-install interface that guides you, step-by-step, through the installation of drivers and printer management utilities. It even automatically detects the printer on the network.
- ❑ **Graphical keypad with dynamic "help":** The magicolor 7450 features graphical front keypad display with dynamic help built right in. It has a 4-line LCD window that displays the current state of the printer, shows options when navigating the menu system, displays toner supply levels, and offers information when an offline printer condition occurs. Best of all, it helps troubleshoot problems with its dynamic help function should an error occur.



Excellent color quality is another strong point of the magicolor 7450.

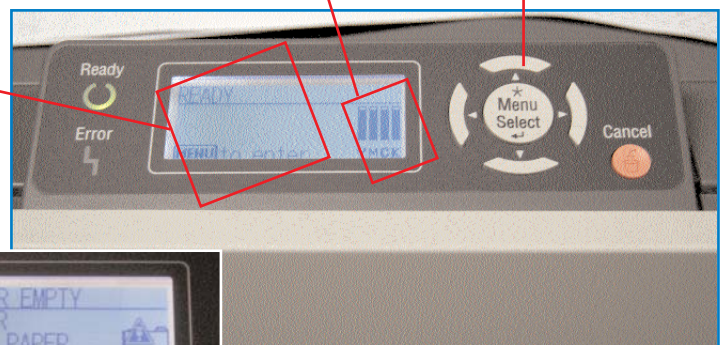


Step-by-step toner replacement instructions are included inside the front panel.

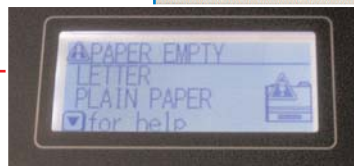
At-a-glance toner gauges

Easy-to-navigate menu system

Large, easy-to-read display



Dynamic help provides assistance when an error occurs





PageScope Web Connection lets you view real-time printer data.

❑ **Printer management with desktop convenience:** Don't leave your desk to check the status of your print job or to see if there's enough supplies to handle a large print run. Rely on PageScope Web Connection to view this information. Simply use your web browser and the printer's IP address to access real-time printer data.

Another desktop management tool included with the magicolor 7450 is the Status Monitor. It resides on your screen for easy accessibility, and shows detailed information about the printer including current status, current consumable levels, and explanations of any errors that may have occurred. It provides this information in a helpful, graphical format.



The desktop Status Monitor provides a graphical means to determine offline printing conditions.

Camera Direct Photo Printing

The Camera Direct Photo Print function allows digital images to be printed directly from a PictBridge-enabled digital camera—no PC or special software required. Photos can be printed on any supported media up to 12.25" x 18". Borderless 4" x 6" prints are also available with special media.

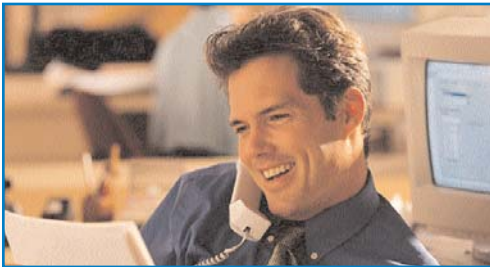
PictBridge provides control over a number of photo printing options, including resolution, media type and size, copy count, n-up, batch, and index printing.



Print images directly from a digital camera—no PC or special software required.



magicolor 7450



"The communication skills, attitude, and demeanor of your Technical Support personnel put me at ease immediately. I knew within the first ten seconds that I was going to get the help that I needed."

*Richard Rothschild, President
TenantBuyer Home Services, Inc.*

Toll-Free Technical Support

With KONICA MINOLTA US-based Technical Support, you never have to wait to have your questions answered. Average response time is less than 1 minute during normal business hours. Technical support is toll-free for 5 years.

Technical support is available in three different ways:



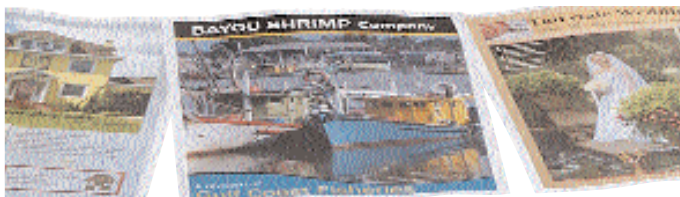
- ❑ **Answer Base:** The Answer Base provides 24-Hour Online Help. Answers to hundreds of common questions and diagnostic advice for all of our printers and all-in-ones are available at printer.konicaminolta.com/support.



- ❑ **Email:** If you can't find the answer you need in the Answer Base, contact one of our Support Engineers via email at <http://printer.konicaminolta.com/support/supportmail/index.html>.



- ❑ **Telephone:** If you would rather talk to a KONICA MINOLTA Technical Support engineer, call (877) 778-2687. Check current business hours at printer.konicaminolta.com/support.



Engine

Production-level performance for non-stop business printing.



The magicolor 7450 offers the power to keep pace with demanding business printing.

Type

The magicolor 7450 is based on a KONICA MINOLTA single-pass laser printer engine that uses a CMYK (cyan, magenta, yellow, black) printing system to produce full-color output—fast!

Duty Cycle

120,000 prints (letter/A4 size) per month maximum.

Print Speeds by Page Size and Media Type

Page Size	Simplex (ppm)	Duplex (ppm)
Letter	24.5	23.1
Legal	14.8	9.0
A4	25.0	23.6
A5	25.0	23.6
B5	25.0	23.6
11 x 17	13.2	8.4

Media Type

Transparency*	5.7	N/A
Thick Stock 1 / 2*	12.1	10.6
Thick Stock 3*	10.0	9.8

*Letter-size page.

First-Page-Out Time*

Simplex	Color (seconds)	Monochrome (seconds)
Letter	11.4	8.2
Legal	12.7	9.4
A4	11.4	8.1
11 x 17	13.4	10.1

Duplex	Color (seconds)	Monochrome (seconds)
Letter	19.2	15.9
Legal	21.7	18.4
A4	19.1	15.8
11 x 17	22.8	19.6

*From an idle, ready state on plain paper



magicolor 7450



Weights and Dimensions

Packaging

Width	Depth	Height
42.05" (1068 mm)	28.35" (720 mm)	30" (762 mm)

Printer

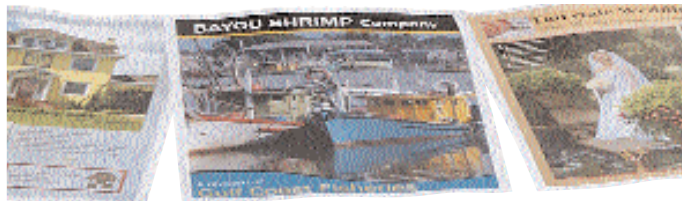
Width	Depth	Height
25.5" (648 mm)	23.6" (606 mm)	18.7" (477 mm)

Weight

Shipping (printer)	190.96 lbs (86.6 kg)
Shipping (lower feeder unit)	46.4 lbs (21.2 kg)
Shipping (duplex option)	10.78 lbs (4.9 kg)
Printer only with consumables	133.4 lbs (60.5 kg)
Printer only without consumables	114.6 lbs (52 kg)

Environmental Conditions

Power Supply	120VAC +/- 10%, 50–60 Hz +/- 3%
Power Consumption	Maximum: 1450 W Average: 700 W Standby: 130 W Energy Saver: 28 W or less
Temperature	Operating: 50°–95° F (10°–35° C) Non-Operating: 32°–95° F (0°–35° C)
Humidity	Operating: 15–85% RH Non-Operating: 10–85% RH
Noise	Operating: 52 dB or less Standby: 40 dB or less



Controller

Emperon is the controller architecture that gives this printer its mighty performance.



Type

The magicolor 7450 uses KONICA MINOLTA's next-generation Emperon controller technology designed for the company's laser printers and MFP product lines. Emperon provides:

- ☐ Compatibility with the most popular printing languages—PostScript and PCL
- ☐ Compatibility with multiple operating environments, including Windows, Macintosh, and Linux
- ☐ Multi-protocol print serving with TCP/IP, EtherTalk, NetWare, and NetBIOS/NetBEUI support
- ☐ Excellent color quality with precise color matching and halftone screening that delivers best-in-class 9600 x 600 dpi-class resolution
- ☐ Easy printer management with the PageScope suite of management utilities
- ☐ Seamless integration of document output management with a consistent user interface and functionalities across all the KONICA MINOLTA next-generation products.

Because of Emperon, magicolor 7450 customers are assured a positive printing experience.

A 733 MHz processor and innovative ASIC chip speed job processing.



The printer's DDR SDRAM processes data faster for quicker page delivery.

Processor

The magicolor 7450 uses a 733 MHz G4 Power PC7447A CPU for document imaging. This high-speed processor works in conjunction with an on-board ASIC chip that offers processing acceleration through hardware assistance for complex operation such as contone screening, color transformations, and image processing.

Printer Memory

- ☐ Standard RAM: 256 MB
- ☐ Maximum RAM: 1024 MB

The magicolor 7450 uses industry-standard 184-pin, unbuffered, dual-data-rate (DDR) SDRAM modules that effectively double data throughput and consume less energy. 256 MB and 512 MB modules are available.



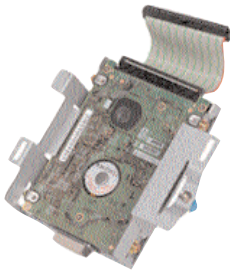
magicolor 7450



The printer has a 256 MB SDRAM DIMM occupying one of two available memory slots on the controller. This memory is sufficient for printing all supported page sizes (simplex and duplex) at its standard 9600 x 600 dpi-class resolution. One slot is available for upgrading printer memory up to 1024 MB. Additional memory can improve the printer's performance, especially in a busy network environment and when printing complex, graphics-filled files.

The magicolor 7450 can be equipped with an internal IDE 40 GB hard disk to support additional memory, security, and convenience functions.

An optional 40 GB hard drive activates a number of printing functions.

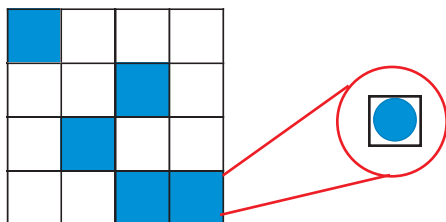


Storage	Store fonts, forms, overlays, macros, and profiles
PDF Print	Print PDF files (via PageScope Web Connection) without accessing the source application
JPEG/TIFF Print	Print JPEG & TIFF files (via PageScope Web Connection) without accessing the source application
Processing	Enhance booklet printing, background printing, and printer-based electronic collation
Job Accounting	Access print job information, including number of jobs printed, file name, and sender
Proof then Print	Review the first copy of a job before the rest of the job is printed. Access PageScope Web Connection or the printer's front panel to release the remainder of the job. Unprinted jobs are deleted on reboot or manually.
Secured Job	Release copies of a secured print job sent to the with a 4-digit PIN via PageScope Web Connection or the front panel. Unprinted jobs are deleted manually or when a "Held Job Timeout" occurs. Selecting a copy count of 0 will also delete a job.
Print & Hold	Print all copies of a job sent to the printer. The file is then held at the printer until a "Held Job Timeout" or reboot occurs, or it's manually deleted.
Stored Job	Store copies of a job sent to the printer without printing them. The job is not deleted upon reboot or printing. Stored jobs can be deleted through the front panel or PageScope Web Connection. They're also deleted when a "Held Job Timeout" occurs.
Stored Job w/ PIN	Same as Stored Job except it requires a 4-digit PIN to access the file.



Traditional Halftone Cell

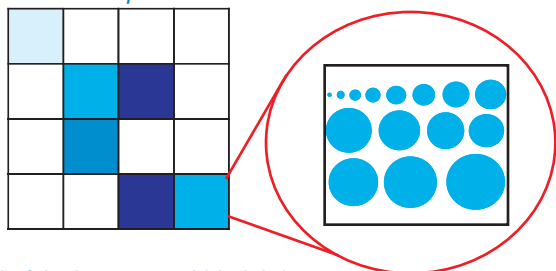
1 bit/pixel



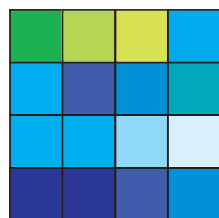
1 bit/pixel means the 600 dpi dot can be only one size and either "on" or "off" for 2 gray or color levels.

Contone Cell

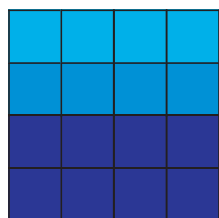
4 bits/pixel



4 bits/pixel means a 600 dpi dot can be 1 of 15 different sizes or "off" for 16 gray or color levels.



PhotoART Screening produces great color detail and results in more gray or color levels.



PhotoART Screening produces smooth gradients

Resolution and PhotoART

❑ 600 dpi (High Quality) (also called 9600 x 600 dpi-class)

The magicolor 7450's high-quality resolution generates photo-quality output with great detail and character in fine lines and halftones by printing 600 x 600 x 4 dpi resolution (600 x 600 dots per inch with 4 bits per pixel). Also known as 9600 x 600 dpi-class PhotoART contone quality, it provides 4 bits (16 levels) of gray or color per pixel rather than only 1 bit (2 levels) per pixel which is traditionally found on many other printers. A contone halftone consists of 4 bits per pixel, with 16 levels per pixel. Combining all three printing colors, PhotoART screening produces an incredible 4096 colors per dot. The result is the type of high-quality output usually produced only by professional print shops.

Instead of producing only one size dot, the magicolor 7450 uses a combination of dithering and dot size control to produce even fill patterns, a wide variety of hues and shades, better detail, and more accurate colors.

The magicolor 7450's print quality is further enhanced by the printer's Simitri Polymerized Toner technology. See "Consumables," later in this guide, for more information.

Compatibility

The magicolor 7450 is compatible with these operating systems:

- ❑ Windows Server 2003 / XP / 2000 / NT 4 (SP 6+) / Me / 98SE
- ❑ Macintosh OSX (v10.2+), OS 9 (v9.1+)
- ❑ Linux Red Hat 9, SuSE 8.2





magicolor 7450



Languages

The magicolor 7450 supports the most popular industry PDLs (Page Description Languages) for seamless, error-free printing:

- ☐ PostScript 3
- ☐ PCL 6 (w/ PjL)
- ☐ PDF v 1.4
- ☐ JPEG / TIFF

For today's common business and graphics applications, the magicolor 7450 includes a standard PostScript 3 emulation, complete with 137 resident fonts.

The printer's PCL 6 emulation includes PCL 5e, 5c, and XL and is designed to emulate the HP LaserJet 4650 (5e, 5c) and 4550 (XL). Included with the PCL 6 emulation are 93 fonts. Also included with the PCL emulation is PjL (Printer Job Language) a document control language that makes the printer highly compatible with mainstream applications that generate these types of commands.

The magicolor 7450 also offers its own PDF emulation, supporting version 1.4 files. This printer-resident emulation allows you to directly print PDF files without first opening them in Adobe Acrobat. A hard disk is required when using this emulation.

The magicolor 7450 has a Gigabit Ethernet interface for today's high-speed networks.

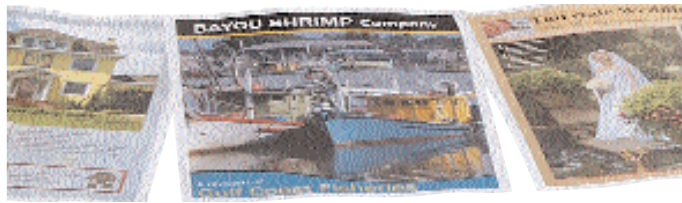


The JPEG / TIFF Direct Print emulation enables you to send JPEG and TIFF files directly to the printer, no source or graphics application required. A hard disk is required when using this emulation.

Connectivity

Three interfaces are integrated into the magicolor 7450's controller:

- ☐ The Gigabit Ethernet (10/100/1000BaseTX) autosensing interface operates on 10 Mbps LAN, 100 Mbps Fast Ethernet, and 1000Mbps Gigabit networks and supports TCP/IP, EtherTalk, IPX/SPX (NetWare 4/5/6), NDS Bindery, NDPS, NetBEUI, UPnP, SMB, UPD, HTTP, HTTPS, IPP1.1, SNMP, LPD, FTP, Telnet, DHCP, BootP, ARP, Auto IP, Ping/ARP, SMTP, SLP, and TCP/IP socket.
- ☐ The USB 2.0 (Hi-speed) compliant interface provides a 4-pin Series B connector and runs at speeds up to 480 Mbps. This "Plug and Play" interface supports Windows Server 2003, XP, 2000, Me, and 98SE; Macintosh OS 9 and OS X 10.2+; and Linux Red Hat 9, and SuSE 8.2 operating systems.



A USB 1.1 Host Port is included for Camera Direct Photo Printing.

- ❑ The parallel interface supports IEEE 1284 communication from Windows Server 2003, XP, 2000, Me, and 98SE; and Linux Red Hat 9, and SuSE 8.2 operating systems. This interface is “Plug and Play” compatible.

The magicolor 7450 also includes a side-access USB 1.1 Host Port that is used for Camera Direct Photo Printing. This feature is explained in detail in the next section.



magicolor 7450



Camera Direct Photo Print

Print directly from a PictBridge-enabled digital camera—no PC or special software required.

USB Host Port with PictBridge Compatibility

Using the USB 1.1 Host Port, conveniently located on the front of the magicolor 7450, you can print photographs directly from many PictBridge-enabled digital cameras with no PC or special software required. Supported functions include the following:

- ☐ Single image print
- ☐ Several selected images print
- ☐ All images index print
- ☐ All images print
- ☐ Multiple copies
- ☐ Date print
- ☐ Fixed size print
- ☐ N-up layout
- ☐ Plain paper or photo media
- ☐ Sizes up to 12.5" x 18", including 4" x 6" borderless prints with special media obtained through your KONICA MINOLTA dealer
- ☐ Varied or duplicate images on the same page



1. Connect the digital camera to the USB 1.1 Host Port.

2. Select the photo(s) to be printed.



3. Click "Print" in the camera user interface.





Media Handling

The magicolor 7450 has hearty media handling to handle heavy print traffic.

250-sheet
Multipurpose
Cassette

100-sheet
Manual Feed
Tray

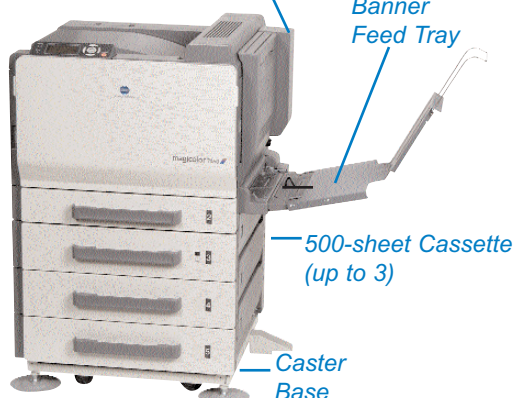


Automatic
Duplexer

Banner
Feed Tray

500-sheet Cassette
(up to 3)

Caster
Base



Standard Media Handling

- ☐ 250-Sheet Multipurpose Cassette
- ☐ 100-Sheet Manual Feed Tray

The magicolor 7450 includes a 250-sheet multipurpose cassette and a 100-sheet manual feed tray for 350 sheets of input out of the box. The printer's multipurpose cassette accommodates all supported page sizes up to 12" x 18". The manual feed tray accommodates the same sizes as the multipurpose cassette, plus banner sizes with a width range of 3.55" - 12.25" and a length range of 5.50" - 47.24". Printed pages are delivered face down into the printer's 350-sheet output tray.

Optional Media Handling

- ☐ 500-Sheet Cassette (add up to three)
- ☐ Automatic Duplexer
- ☐ Banner Feed Tray
- ☐ Caster Base

The printer's input capacity can be increased by adding a 500-sheet cassette. Up to three cassettes can be installed, bringing paper input to its maximum of 1,850 sheets.

Adding an automatic duplexer is a great investment for businesses printing lots of multiple-page documents. This two-sided printing option saves paper and filing space.

For greater input flexibility when printing banner size, a banner feed tray can be added. This option attaches to the manual feed tray. The banner tray ensures the smooth feeding of long media into the magicolor 7450, but is not required to do banner prints.

The optional caster base adds stability and mobility to the magicolor 7450. It can be installed either directly under the printer or under the 500-sheet cassette.



magicolor 7450



Print Media

The magicolor 7450 supports a range of print media to handle a variety of applications. For a complete list of approved media, refer to printer.konicaminolta.com.

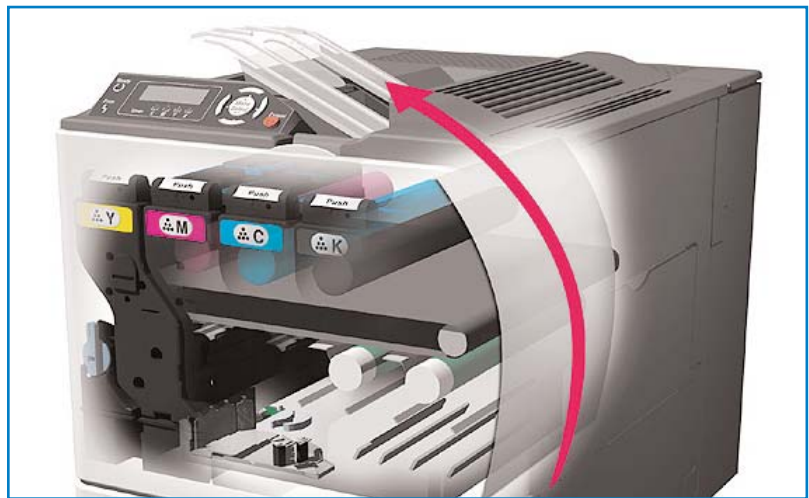
Media Type	Specifications	Driver Setting
Normal Paper	16–24 lb (60–90 g/m ²)	Plain Paper
Recycled Paper	16–24 lb (60–90 g/m ²)	Recycled
Envelopes	Supported*	Envelope
Glossy Stock	16–24 lb (60–90 g/m ²)	Glossy
Letterhead	16–24 lb (60–90 g/m ²)	Letterhead
Labels (sheet)	Supported*	Label
Postcards	16–43 lb (60–163 g/m ²)	Postcard
Thick Stock 1	48 - 80 lb Index (91–150 g/m ²)	Thick Stock 1
Thick Stock 2	80 - 112 lb Index (151 - 210 g/m ²)	Thick Stock 2
Thick Stock 3	112 - 136 lb Index (211 - 256 g/m ²)	Thick Stock 3
Transparencies*	KONICA MINOLTA Q-Media	Transparency

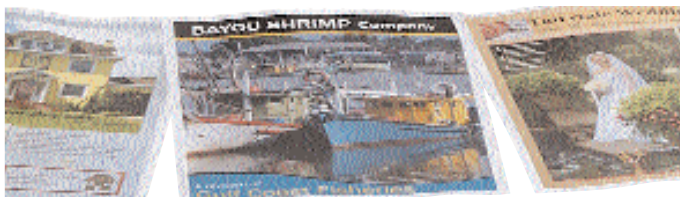
*Must be certified for laser printers and capable of withstanding fusing temperature of 401° F (205° C).

Paper Path

A direct paper path works with the magicolor 7450's single-pass print technology for fast and accurate output.

The magicolor 7450's paper path follows a direct C-shaped paper path that enables quick and accurate printing.



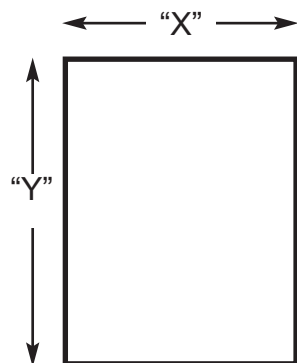


Imageable Area

- ❑ Guaranteed print width—Up to 8.5" (215.9 mm)
- ❑ Guaranteed print length—Up to 13.7" (348 mm)
- ❑ Non-printable area—0.16"/4 mm from all page edges

Supported Media Sizes

250-Sheet Multipurpose Cassette (Standard)



The table at the right refers to X and Y dimensions of the media as diagrammed above.

Media Size	x-Dimension	y-Dimension
Cut-Sheet Paper		
Letter	8.5"	11"
Legal	8.5"	14"
11 x 17	11"	17"
12 x 18	12"	18"
4 x 6	4"	6"
Executive	7.25"	10.5"
Statement	5.5"	8.5"
Folio	210 mm	330 mm
SP Folio	8.5"	12.7"
Foolscap	8"	13"
UK Quarto	8"	10"
Letter Plus	8.5"	12.7"
Government Letter	8.5"	10"
Government Legal	8.5"	13"
A3	11.7"	16.5"
A4	210 mm	297 mm
A5	148 mm	210 mm
B4 (JIS)	257 mm	364 mm
B5 (JIS)	182 mm	257 mm
B5 (ISO)	176 mm	250 mm
B6 (JIS)	128 mm	182 mm
D8K	270 mm	390 mm
16K	195 mm	270 mm
Kai 8		
Kai 16	185 mm	260 mm
Kai 32	130 mm	185 mm
Custom	3.54" (min) 12.25" (max)	5.5" (min) 18" (max)

Postcard

Double Postcard	148 mm	200 mm
Japanese Postcard	100 mm	148 mm



magicolor 7450



Envelopes

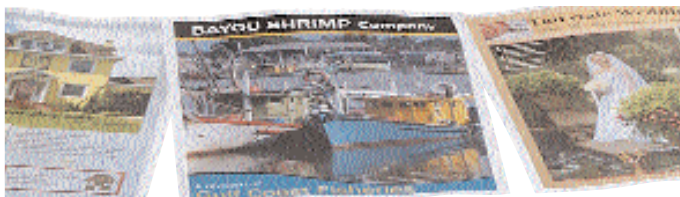
Monarch	3.875"	7.5"
Com 10	4.1"	9.5"
DL	110 mm	220 mm
B5 (ISO)	176 mm	250mm
C5	162 mm	229 mm
C6	114 mm	162 mm
Chou 3	120 mm	235 mm
Chou 4	90 mm	205 mm
You 0	197 mm	136 mm
You 2		
You 4	235 mm	105 mm
You 6	190 mm	98 mm

Manual Feed Tray (Standard)

Media Type	x-Dimension	y-Dimension
Same as Multipurpose Cassette plus:		
Banner	3.55" (min) 12.25" (max)	5.50" (min) 47.24" (max)

500-Sheet Input Cassette (Optional)

Media Type	x-Dimension	y-Dimension
Letter	8.5"	11"
Legal	8.5"	14"
11 x 17	11"	17"
Statement	5.5"	8.5"
Folio	210 mm	330 mm
Government Letter	8.5"	10"
Government Legal	8.5"	13"
A3	11.7"	16.5"
A4	210 mm	297 mm
A5	148 mm	210 mm
B4 (JIS)	257 mm	364 mm
B5 (JIS)	182 mm	257 mm
D8K	270 mm	390 mm
Kai 16	185 mm	260 mm



Automatic Duplexer (Optional)

Media Type	x-Dimension	y-Dimension
Letter	8.5"	11"
Legal	8.5"	14"
11 x 17	11"	17"
12 x 18	12"	18"
Executive	7.25"	10.5"
Statement	5.5"	8.5"
Folio	210 mm	330 mm
SP Folio	8.5"	12.7"
Foolscap	8"	13"
UK Quarto	8"	10"
Letter Plus	8.5"	12.7"
Government Letter	8.5"	10"
Government Legal	8.5"	13"
A3	11.7"	16.5"
A4	210 mm	297 mm
A5	148 mm	210 mm
B4 (JIS)	257 mm	364 mm
B5 (JIS)	182 mm	257 mm
B5 (ISO)	176 mm	250 mm
D8K	270 mm	390 mm
16K	195 mm	270 mm
Kai 16	185 mm	260 mm
Custom	3.54" (min) 12.25" (max)	5.5" (min) 18" (max)

Advanced Document Processing

The magicolor 7450's printer driver provides several advanced document processing functions which are described below:

Printer-based electronic collation

Instead of transmitting a multiple-page print job several times over the network to print the number of copies required, simply tell the printer driver how many copies you want. The job is transmitted once, but the printer outputs the required number of copies. Called printer-based electronic collation, this feature enables the printer to deliver the required number of copies, with the pages in the proper order, without bogging down the transmission line (hard disk required).



magicolor 7450



N-up printing



Watermarks

N-up printing

The printer driver's n-up option allows you to print a 2, 4, 6, 9, or 16 pages of a multi-page document on a single sheet of media. Add a border line and select the flow of the pages across the sheet using easy-to-understand settings.

Form overlays

A form overlay is an image that is printed either on the first page or on all pages of a document.

Watermarks

A watermark is a word or phrase that is repeated on each printed page. You can add common text watermarks such as "CONFIDENTIAL" and "DRAFT" to a document—or create a custom watermark. The printer driver also includes selections for indicating the watermark's font, style, size, color, placement, and angle.

Cover page/Separator page

This function allows you to pull different media from a designated paper tray for use as a Cover page and/or Back page. You can also choose to divide multiple copies of a document with a Separator page.

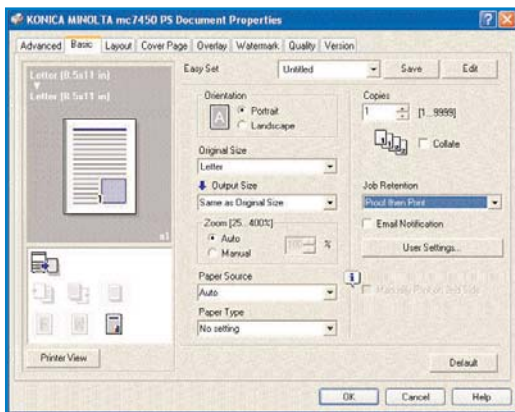
Job retention

Access job retention options, including Stored Job, Print and Hold, Secured Job, and Proof then Print, through the printer driver. A hard disk must be installed to activate these functions, which offer convenience and security. See "Printer Memory" later in this guide for a complete description of each.

Special Media Density Adjustment

The control panel on the magicolor 7450 allows for special adjustment when using thick paper or transparencies. This function is used to make fine adjustment of the image density or to adjust variation in density in each color when using thick paper or transparencies.

To access this feature from the control panel, select "Maintenance Menu" (Administrator password required) on the control panel, then select "Alignment". Scroll through this sub-menu and select "Transfer Power", and then select "Simplex Pass". Select "Thick 1/2/3" or "Transparency" to make the appropriate image adjustment. To make individual color adjustments, go to the "Alignment" menu, select "Transfer Power", then select "Img Adj Thick" and adjust individual colors accordingly.

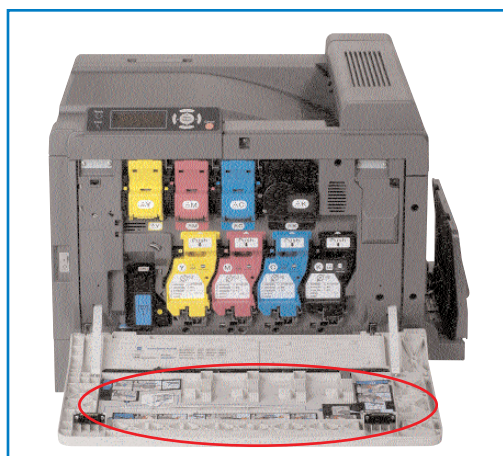


Use the driver to access Job Retention functions, including Proof then Print.



Consumables

magicolor 7450 consumables are intelligent, easy to monitor, and easy to replace.



Consumable supplies are easily accessible. The inside front cover guides you through the replacement process.

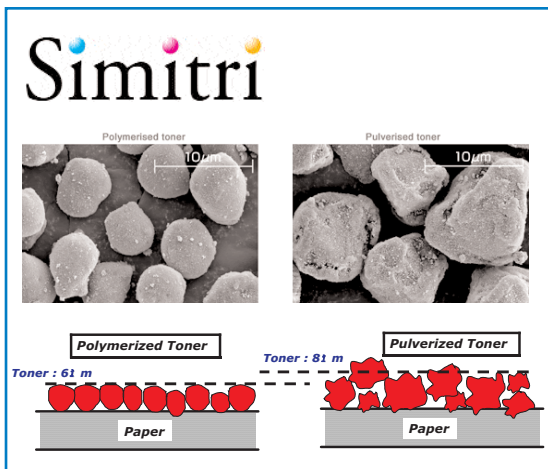
User-Replaceable Supplies

- ☐ Cyan, magenta, yellow, and black (CMYK) toner cartridges
- ☐ Cyan, magenta, yellow, and black (CMYK) imaging units
- ☐ Waste toner box

The magicolor 7450's four (CMYK) self-contained toner cartridges are each color-coded and keyed for error-free installation and replacement, and feature an intelligent chip that stores information on toner levels for accurate supplies monitoring. (See "Supplies Monitoring" later in this guide for further information.). The magicolor 7450 also includes four (CMYK) imaging units (OPC drum cartridges). After the printer's laser diode has imaged toner color onto each drum cartridge, the image is transferred to the transfer belt and then to the media.

The printer's waste toner box captures excess toner from the printing process and prevents engine damage from loose toner particles.

When a toner does require replacement, it's easily accessible via the front cover (which features step-by-step instructions for removing empty and adding new cartridges).



Simitri Polymerized Toner adheres better to the media surface—as a result, prints are more durable, with images and text that don't smear or fade.

Simitri Polymerized Toner

KONICA MINOLTA's Simitri (pronounced "symmetry") Polymerized Toner produces exceptional output. Its particles are smaller and more uniform in size and shape than conventional, pulverized toner, providing finer lines, better halftones, and improved image quality, regardless of media type used.

Simitri Polymerized Toner also has a higher transfer efficiency than regular toner, further contributing to output quality while producing less waste toner in the form of toner dust, which remains on the surfaces of drum cartridges, transfer belts, and rollers after a page has printed. A lubricant encapsulated within the toner particles eliminates the need for fuser oil, meaning that you have one less consumable to buy. Polymerized Toner is also more environmentally friendly, emitting less carbon acid gas (CO₂), nitrogen oxide (NO_x) and sulfur oxide (SO_x) in production process.



magicolor 7450



Consumable Yields

Consumable yields are expressed as an average number of letter/A4 pages at 5% coverage. However, actual consumable life depends on such variables as page coverage, page size, media type, continuous or intermittent printing, number of color planes, ambient temperature, and humidity.

Optimal consumable life is achieved with continuous printing (three or more pages per job). Intermittent printing (one page per job) reduces consumable life.

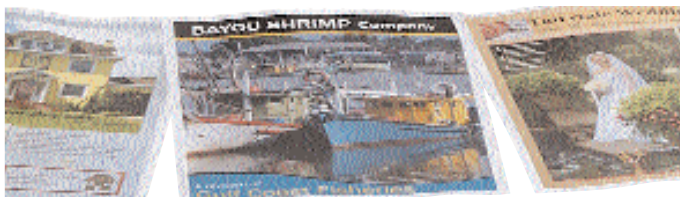
In-box Consumables

The magicolor 7450's standard in-box toner cartridges contain enough toner for an average of 3,000 prints at standard 5% coverage, letter/A4-size paper, continuous printing). Also included in the shipment is a full-capacity waste toner box.

Replacement Consumables

Consumable	Yield*	Notes
Black Toner	15,000 pages	Continuous printing
Cyan Toner	12,000 pages	Continuous printing
Magenta Toner	12,000 pages	Continuous printing
Yellow Toner	12,000 pages	Continuous printing
Black Imaging Unit	50,000 pages	Continuous printing
Cyan Imaging Unit	30,000 pages	Continuous printing
Magenta Imaging Unit	30,000 pages	Continuous printing
Yellow Imaging Unit	30,000 pages	Continuous printing
Waste Toner Box	18,000 pages	Continuous printing

**Based on standard 5% coverage, letter/A4-size paper.*



Supplies Monitoring

You have many options for viewing remaining consumable supply levels:

- ☐ Printer control panel—Message window
- ☐ Printer control panel—Statistics page
- ☐ Status Monitor—Consumables tab
- ☐ Printer driver—Configure tab
- ☐ PageScope Web Connection—System tab

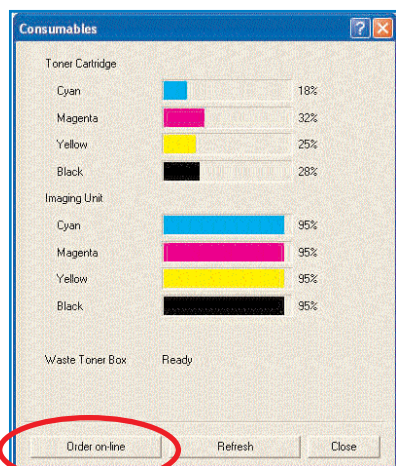
Printer Control Panel

The message window in the printer's control panel clearly shows toner levels with a gas gauge style display.

View the printer's supplies status through the control panel window.



You can also use the control panel to print a Statistics page to review supply levels, by choosing STATISTICS PAGE from the PRINT MENU. This printed page shows the percentage of life remaining for C, M, Y, and K toners and imaging units, as well as for the waste toner box.



Use the Status Monitor to review supplies. Select "Order on-line" to conveniently buy more.

Status Monitor

The Status Monitor is a desktop utility that displays information about the current status of the printer and its consumables and allows you to configure various settings. It's available for computers running Windows and connected to a magicolor 7450 using the Ethernet interface. View supply levels by choosing the Consumables tab from the utility's display. This full-color, gas gauge-style display shows the percentage of each toner cartridge, as well as the transfer belt, transfer roller, and fuser unit remaining.

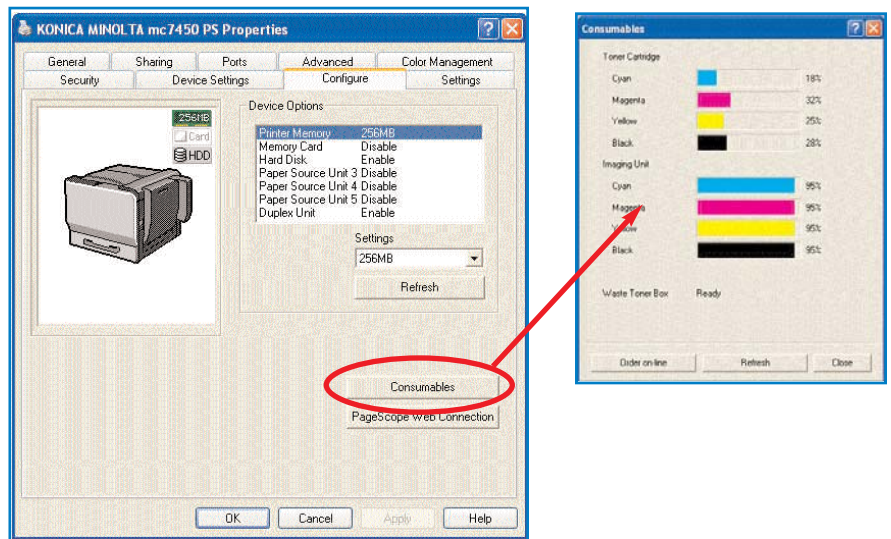


magicolor 7450



Printer Driver

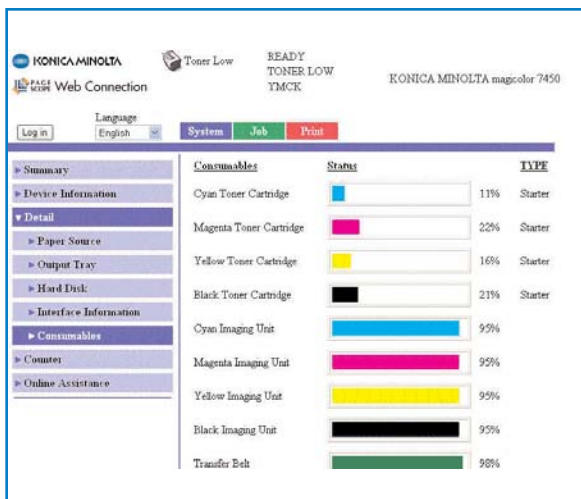
You can view supply levels by viewing the magicolor 7450 printer driver from your computer's Control Panel. Select "Printers and Faxes" from the "Settings" menu. Right-click on the magicolor 7450 and select "Properties". The "Configure" tab has a convenient link to view consumables.



PageScope Web Connection

PageScope Web Connection, a printer-resident web page offers a graphic supplies status view. Type the printer's IP address into the address field of your web browser, select the "System" tab, then select "Details," and then "Consumables" to locate these easy-to-read gas gauges.

PageScope Web Connection—Supplies Status





[PageScope Net Care](#)

PageScope Net Care is the printer management solution for administrators of small and large business networks. It includes a graphical user interface that allows you to view or set the configurations of a printer. By selecting the “System” sub-menu, and clicking on the “Supply” tab, you can view the status of the consumables in your magicolor 7450.



magicolor 7450

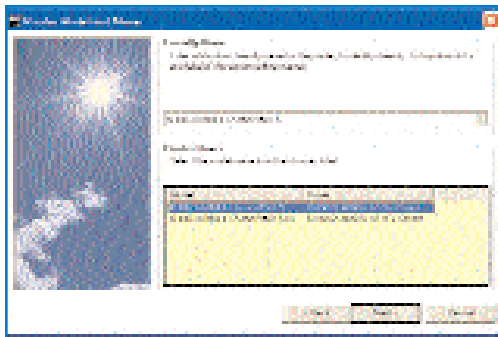


Printer Management

Comprehensive management tools for printer users and network administrators.

Convenient Printer Management Tools

You can manage the printer through the convenient and extensive printer management tools built into the printer and included on the printer's auto-install / auto-network detection *Software Utilities* CD-ROM. Many management functions are also accessible through the printer's control panel.



An auto-install software CD automatically detects the printer on the network and guides you through the installation process.

- ☐ Printer Drivers
- ☐ PageScope Printer Management Suite
- ☐ Status Monitor
- ☐ Print Monitor
- ☐ Download Manager
- ☐ Control Panel
- ☐ Electronic Documentation

Printer Drivers

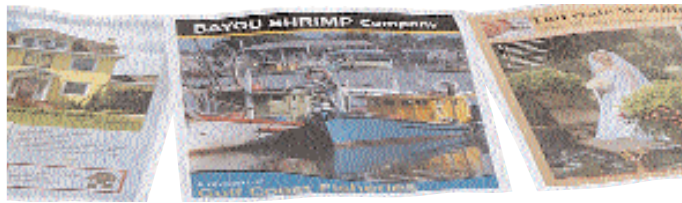
The magicolor 7450 ships with comprehensive printer drivers that provide access to the printer's numerous document handling features:

- ☐ PostScript 3 drivers for Windows Server 2003/XP/2000/NT4
- ☐ PCL drivers for Windows Server 2003/XP/2000/NT4/Me/98SE
- ☐ PPD (Level 3 PostScript Printer Description) files for Windows Server 2003/XP/2000/NT4/Me/98SE
- ☐ PPD (Level 3 PostScript Printer Description) files for Macintosh OS X (v10.2+) and OS 9 (v9.1+)
- ☐ PPD (Level 3 PostScript Printer Description) files for Linux Red Hat 9, SuSE 8.2

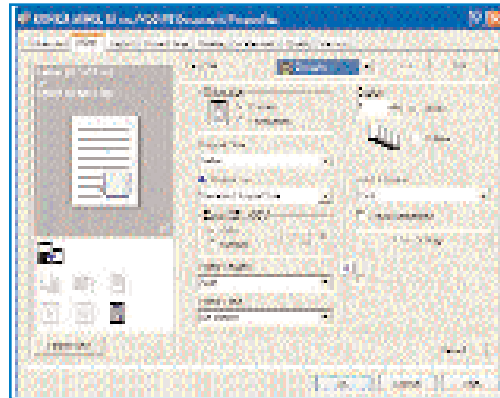


KONICA MINOLTA Windows drivers are Microsoft Server 2003, XP, and 2000 certified. Macintosh PPDs are Apple certified.

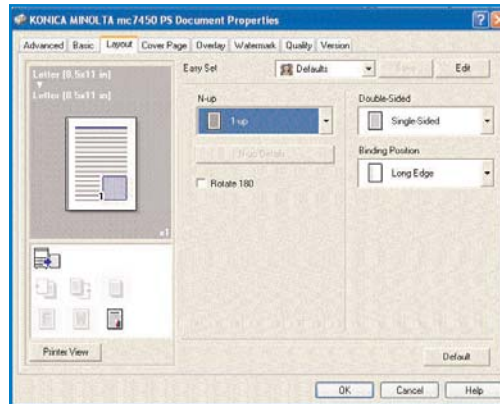
**Windows only*



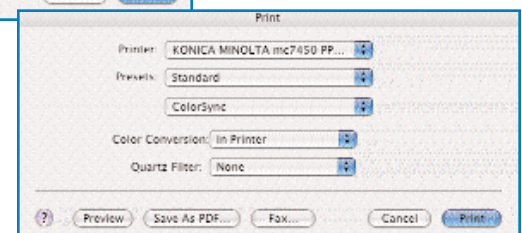
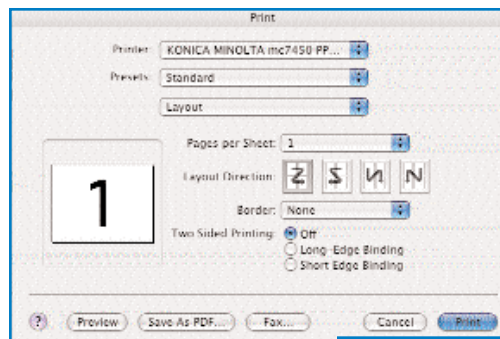
The magicolor 7450 Windows PostScript and PCL drivers features a tabbed layout that conforms to Microsoft standards, making them very simple to use.



The drivers offer a graphical, straight-forward method for making output selections, including n-up, watermark, and separator page features.



PPDs make the printer's extensive document handling and control features available to Macintosh and Linux users.





magicolor 7450



PageScope Printer Management Suite

For robust printer management for system administrators and general users, the magicolor 7450 includes the PageScope Printer Management Suite:

- ☐ PageScope Web Connection
- ☐ PageScope Net Care
- ☐ PageScope Network Setup
- ☐ PageScope Plug and Print
- ☐ PageScope NDPS Gateway
- ☐ PageScope EMS Plug-in
- ☐ HP Web JetAdmin Plug-in

PageScope Web Connection

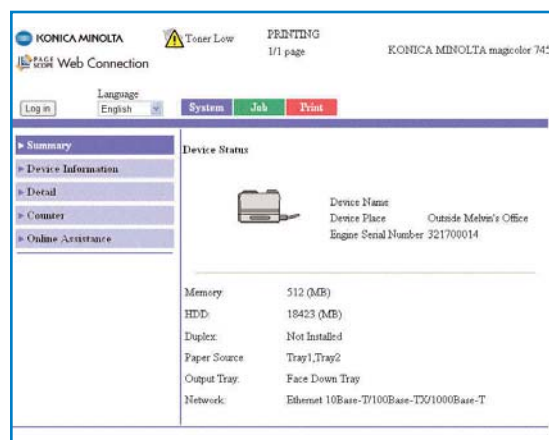
The magicolor 7450 includes an embedded web page, PageScope Web Connection, that allows you to retrieve real-time information about the status of the printer. It requires no additional software on your computer other than your existing Web browser.

PageScope Web Connection provides you with a simple way to find the answers to questions like these about their printer:

- ☐ How much toner is left in the cartridges?
- ☐ Has my document printed yet?
- ☐ What type of media is in each tray?

It also allows Administrators to perform activities such as activating security settings, tray mapping, changing language, downloading fonts, and applying network settings.

With PageScope Web Connection you can check printer and print job status using your web browser.





[PageScope Net Care](#)

PageScope Net Care is the printer management solution for administrators of small and large business networks. This web-based software provides the security, support, and information-gathering capabilities that all administrators look for in device management systems. PageScope Net Care delivers these capabilities in a simple, easy-to-use form that minimizes downtime and improves network productivity.

PageScope Net Care runs on a variety of OS platforms and offers an easy and intuitive way to perform remote installation, management and configuration of KONICA MINOLTA and non-KONICA MINOLTA printers.

[PageScope Network Setup](#)

This software utility is designed to find and communicate with KONICA MINOLTA printers across a network using either TCP/IP or IPX/SPX protocols. It allows administrators to perform these functions:

- ☐ Display a list of devices on the network
- ☐ Verify and change network and print settings for each device
- ☐ Set up Peer-to-Peer printing
- ☐ Access the web settings page in the device

[PageScope Plug and Print](#)

The PageScope Plug and Print utility automatically detects a new printer connected to the network and creates a print object on the Windows print server.

[PageScope NDPS Gateway](#)

This network utility enables KONICA MINOLTA printers to be used in a Novell Distributed Print Services (NDPS) environment. It provides these benefits to the system administrator:

- ☐ Printer management via Novell Standard Console
- ☐ Bi-directional feedback and control
- ☐ Event notification
- ☐ Controlled access under NDS
- ☐ Automatic Device Discovery



magicolor 7450



PageScope EMS Plug-ins

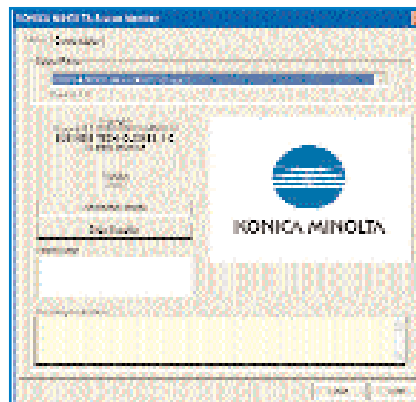
The PageScope EMS Plug-Ins are modules designed to integrate into third party Enterprise Management Software packages and allow KONICA MINOLTA printers to be managed and monitored. KONICA MINOLTA offers plug-ins for the following EMS packages: HP/OpenView, Tivoli/NetView, Microsoft Management Console, and CA UniCenter.

HP Web JetAdmin Plug-in

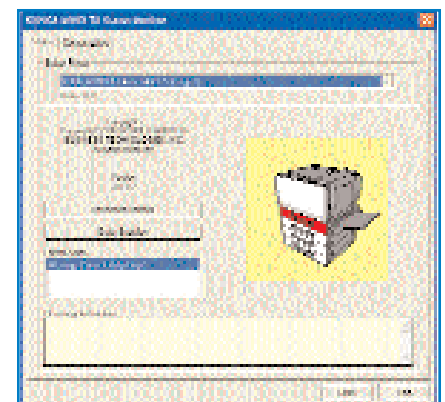
This plug-in allows network administrators to use HP Web JetAdmin to install, manage, and configure KONICA MINOLTA printers on their network.

Status Monitor

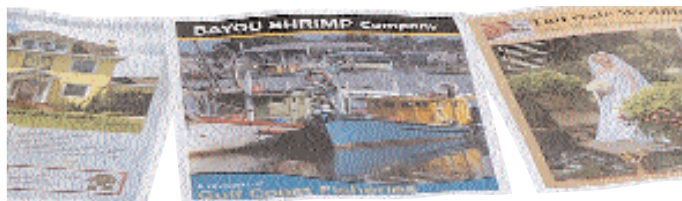
The Status Monitor provides detailed information about the printer including current status, current consumable levels, and explanations of any errors that may have occurred. This helpful utility resides as an icon in the system tray on the Windows taskbar and can be activated simply by double-clicking the icon. It can be used on computers running Windows Server 2003/XP/2000/NT4/Me/98SE connected to the printer using Ethernet.



The Status Monitor automatically establishes communication with the printer whenever the host computer is turned on.



This utility provides a graphical means to determine printer errors.



Print Monitor

The Print Monitor utility routes print jobs directly from a host PC to the magicolor 7450 using TCP/IP over the Ethernet interface, reducing network traffic as data travels over the network once, bypassing a dedicated print server. KONICA MINOLTA provides Print Monitors for Windows Server 2003/XP/2000/NT4 and Windows Me/98SE platforms.



The Download Manager lets you download fonts, forms, and profiles to the printer's hard disk.

To communicate current job status, number of jobs in the queue, errors, and connection interruptions, a Windows graphical printer status screen is used. The Print Monitors include an Auto Discovery function to search for all KONICA MINOLTA printers on the network, then list each by IP address or DNS host name in the printer driver dialog box. This allows you to instantly view and select from all available printers.

Download Manager

To store and delete fonts, forms, overlays, color profiles, and other files onto the magicolor 7450's optional hard disk, KONICA MINOLTA offers a Download Manager utility. The Download Manager uses an easy-to-understand dialog box complete with an online Help option and communicates to the printer using TCP/IP or EtherTalk. (Note: PageScope Web Connection can also be used for download functions).

Printer Control Panel

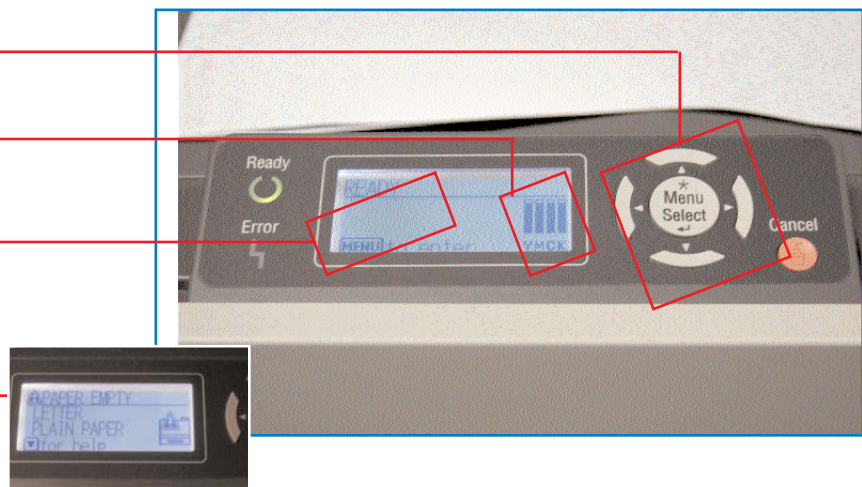
The magicolor 7450 features an easy menu navigation with a graphical display and dynamic help built in. This control panel has a four-line LCD window that displays the current state of the printer, shows options when navigating the menu system, displays toner supply levels, and offers information when an error occurs.

Easy-to-navigate menu system

At-a-glance toner gauges

Large, easy-to-read display

Dynamic help provides assistance when an error occurs





magicolor 7450



The control panel features two LEDs (Ready and Error) that indicate printer status and six selection keys to navigate the printer menu and cancel print jobs.

Menu/Select Button

Press the *Menu/Select* button to enter the configuration menu system, move down within the menu structure, and select the displayed menu choice.

Left and Right Buttons

The *Left* and *Right* buttons allow you to move left and right within the menu structure and also scroll left and right within a list of available menu choices.

Up and Down Button

The *Up* and *Down* buttons allow you to move up and down within the menu structure and scroll upward or downward through the available characters when you are in a menu choice that is changeable character by character.

Cancel Button

Use the *Cancel* button to cancel the currently displayed menu or menu choice. The button also allows you to cancel one or all print jobs that are currently being printed or processed.

Electronic User Documentation

Three manuals that you'll find especially useful are included on the *Documentation* CD-ROM:

- ☐ *magicolor 7450 Installation Guide*
- ☐ *magicolor 7450 User's Guide*
- ☐ *magicolor 7450 Reference Guide*

These manuals are provided in Adobe PDF format. Using the free Adobe Reader, you'll be able to easily display these manuals on your computer screen, enlarge any illustrations you need a close-up view of, easily search for a certain word or phrase, or print part or all of the manual. In addition, these electronic manuals can be easily stored on your computer's hard disk or in a convenient place on your network, so that any information you need is only a click away.

All of the user documentation is also posted on the KONICA MINOLTA PRINTING SOLUTIONS U.S.A. Service & Support website at

printer.konicaminolta.com/support



Color Control

Get great color without great effort.

Professional Color Tools

The magicolor 7450 makes it easy to get excellent, accurate color. Featuring the KONICA MINOLTA Color Management Module, a built-in ICC color matching system that automatically adjusts color for you, the magicolor 7450 faithfully reproduces color documents with no user intervention required.

For more professional users, the printer supports these automatic and hands-on color matching tools:

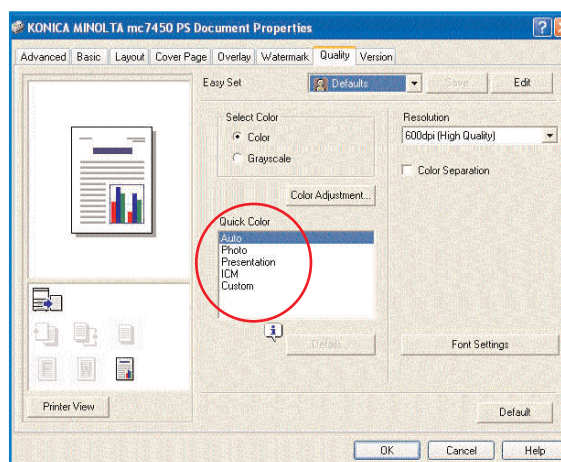
- ☐ Host-based ICC color matching
- ☐ Dynamic Contone Screening
- ☐ Custom Color Controls
- ☐ PANTONE Color Look-Up Tables
- ☐ Enhanced Automatic Image Density Control (eAIDC)

Automatic ICC-Based Color Matching

The magicolor 7450 has a built-in ICC-based color matching system called the KONICA MINOLTA Color Management Module (CMM). Whether a page contains photos, graphics, text, or a combination of these elements, this CMM provides controls for automatic correction of color files. Using built-in ICC profiles and an sRGB color space, this system makes it as easy to get great color from any application.

You can leave the Quick Color selection in the driver set at “Auto” for automatic color matching, or choose “Photo” or “Presentation” to better define the primary content of their document.

The printer-resident ICC color matching system automatically adjusts color based on a page's content—no user intervention needed.





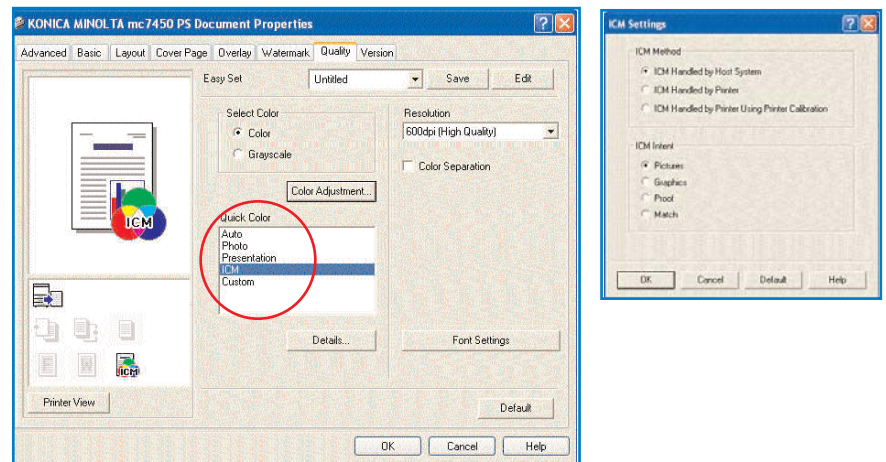
magicolor 7450



Host-Based ICC Color Matching

You may prefer to use the color matching system built into your host software applications such as QuarkXPress, PhotoShop, and Illustrator. To support host-based color matching, KONICA MINOLTA provides a Windows ICM printer profile to define the printer's color space to the software's color matching system. To activate this function, simply select "ICM" from the printer driver then choose the preferred ICM method and rendering intent.

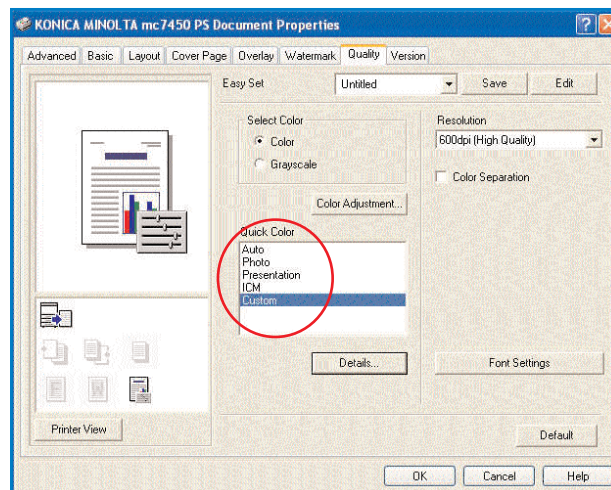
Select ICM from the driver to de-activate the printer's internal CMM and use host-based color matching.

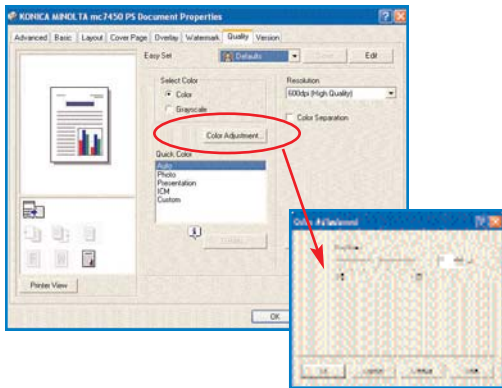
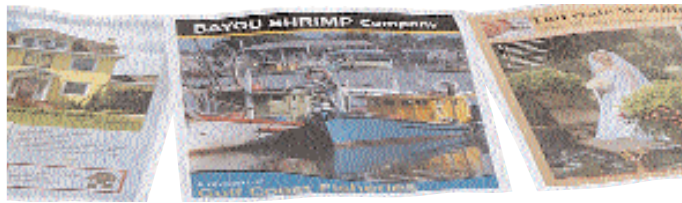


Dynamic Contone Screening

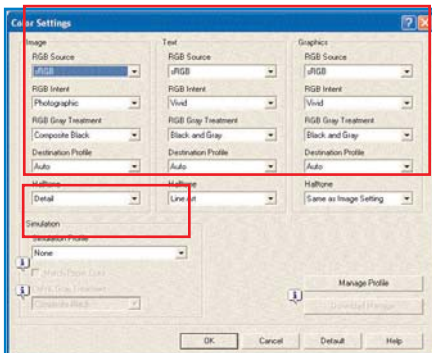
Dynamic Contone Screening is a convenient color tool that optimizes output by analyzing page elements, then *automatically* adjusts color based on these contents. This same function can be performed *manually*, allowing you to adjust color settings for each page object—Images, Text and Graphics. This hands-on method of color matching is performed via the printer driver by choosing the "Custom" setting.

Choose "Custom" to perform Dynamic Contone Screening manually.

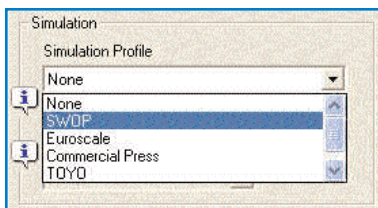




Adjust image density by changing brightness setting.



Intricately define color by page object with the printer's Custom color match setting.



Custom Color Controls

The magicolor 7450 has several options for adjusting color. In the printer driver, image density can be adjusted by changing the setting value of the driver. This feature can be found under the "Quality" tab. On the control panel under the "Quality" menu, by going into the "Calibration" sub-menu and selecting "CMYK Density," the density of highlights, middle colors, and shadow colors can be adjusted.

The driver's "Custom" setting also allows you to manually adjust color based on device profiles, rendering intents, and halftone settings.

- ❑ The device profile, or RGB Source, defines the host input. Select from sRGB (for Windows OS), Apple RGB, Adobe RGB, Color Match RGB, and Blue Adjust RGB.
- ❑ During color transformation from the host to the printer, the rendering intent, or RGB intent, determines the type of color matching that will be used to ensure graphics are bright and images are natural. Select from "Vivid" (ideal for sharp graphics and text), "Photographic" (best for images), Relative or Absolute Color.
- ❑ The halftone setting defines the screening method used. You will find that selecting the "Smooth" setting for images will produce fewer lines per inch (lpi), smoother gradations, and less banding. Selecting the "Detail" setting for text results in a higher lpi, crisp edges, and sharp lines.

The magicolor 7450 also includes built-in profiles for simulating printing press output. Select from SWOP, EuroColor, DIC, Toyo, and Commercial press simulations.

PANTONE Color Look-Up Tables

PANTONE is another form of color matching supported by the magicolor 7450. PANTONE specifies hundreds of spot colors, each specified with a unique number. Each color can be simulated on a printer with the appropriate combination of process (CMYK) colors.

On the magicolor 7450, the desired PANTONE Color number and corresponding CMYK value is accessed from a look-up table for the printer. You can find these tables and related documentation on the KONICA MINOLTA web site.



magicolor 7450



Enhanced Automatic Image Density Control (eAIDC)

From day to day, and from one consumable change to the next, toner density may change, ultimately affecting color consistency. To maintain color consistency and ensure predictable color without user intervention, the magicolor 7450 automatically performs enhanced Automatic Image Density Control at the following times:

- ☐ When the printer is turned on after a temperature or humidity change has occurred
- ☐ When the printer exits from Energy Saver mode after a temperature or humidity change has occurred
- ☐ When the printer is turned on or exits from Energy Saver mode after a predetermined number of pages have been printed (200 pages since the last quick AIDC or 1000 pages since the last full AIDC)
- ☐ After a consumables change
- ☐ Whenever requested by the user through the printer's control panel (Quality >> Calibration >> AIDC Process)



Consistent color is achieved through eAIDC.



Options & Requirements

Build it to your specifications.



Duplex Option

You can perform manual duplexing on the magicolor 7450 by printing on one side of a page, turning it over, and then printing on the other side. For more convenient two-sided printing, an automatic duplex option is available. It installs on the side of the printer and adds very little width to the footprint of the printer.



500-sheet Cassette

Up to three optional 500-sheet cassettes can be added to the magicolor 7450, increasing input to its maximum capacity of 1,850 sheets. The cassette accepts up to ledger-size paper and attaches conveniently underneath the printer. Adding this option not only reduces the frequency of paper refills, but allows you to load more than one type of media in the printer—perfect for printing a mixture of regular documents, letterhead, forms, and preprinted stock.



Banner Feed Tray

An optional banner feed tray provides greater input flexibility when printing banner sizes (W) 3.55" - 12.25", (L) 5.50" - 47.24". This option attaches to the manual feed tray. The banner tray ensures the smooth feeding of long media into the magicolor 7450, but is not required to do banner prints.

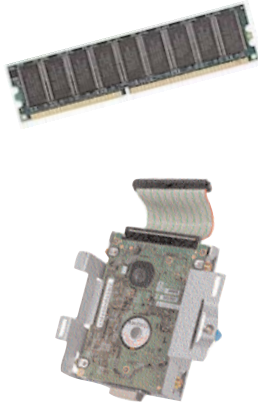


Caster Base

Make the magicolor 7450 mobile with a caster base. It's great for offices that can't afford to relinquish desktop space for the printer. It also provides added stability for the printer. The caster base can be installed either directly under the printer or under the 500-sheet cassette.



magicolor 7450



Memory

The magicolor 7450 has two slots available for memory, with one slot occupied with a 256 MB DDR SDRAM. Memory can be upgraded to 1024 MB using 256 MB, and 512 MB SDRAM. The magicolor 7450 uses industry-standard 184-pin, unbuffered, dual-data-rate (DDR) SDRAM modules. 266 MHz / 333 MHz, PC-2100 / PC-2700 modules can be used.

Hard Disk

The magicolor 7450 can be equipped with a 40 GB internal IDE hard disk to support addition functions such as downloaded fonts, forms, and profiles; electronic collation; Job Accounting; direct PDF, JPEG, & TIFF printing; Proof then Print; Secured Job, Print & Hold, and Stored Job functions.

Extended Warranties

KONICA MINOLTA offers multiple extended warranty options for the magicolor 7450, including 1-, 2-, and 3-year on-site warranties.



KONICA MINOLTA

KONICA MINOLTA PRINTING SOLUTIONS U.S.A., INC.
One Magnum Pass
Mobile, AL 36618
USA

printer.konicaminolta.com/usa