

KONICA MINOLTA



The essentials of imaging

MAXXUM 7D



Konica Minolta is pleased to announce the Konica Minolta Maxxum 7D. This groundbreaking new 6.1-million-pixel resolution, lens-changeable digital camera is the world's first digital SLR boasting a body-integral CCD-shift, "Anti-Shake" technology that combines enhanced picture quality, performance and improved handling characteristics. The Maxxum 7D is compatible with the full range of Maxxum AF lenses.

The key benefit of Anti-Shake being it can support most of Konica Minolta's AF lenses. Anti-Shake technology allows photography with reduced blur due to camera shake, even when shooting dimly lit scenes or when using telephoto lenses and shooting macro subjects without the aid of flash or a tripod.

Another key to the camera's performance are its 6.1-million effective pixels, housed on an APS-C size CCD plus Konica Minolta's proprietary, CxProcess™ III image processing technology that delivers high-definition, natural-looking images.

The camera also boasts a large, easy-to-view, high-definition 2.5-inch color LCD monitor, the large screen handles the tasks of menu navigation and image display, also providing shooting information and camera setting displays. In keeping with its acclaimed Maxxum film SLR counterpart, the Maxxum 7D inherits a similar, simple to use dial and lever operation system. Enhancing handling further, the new model also features a superbly-bright, easy-to-view, high-performance viewfinder designed to be comfortable and easy to use.

In addition, the new digital SLR offers a comprehensive function set, designed to meet a diverse range of photographic challenges and user needs, complemented by a broad range of Maxxum accessories.

MAXXUM 7ED



Main Selling Points:

- ⇒ **Proprietary CCD-Shift technology for fulltime Anti-Shake protection**
 - World's first digital SLR camera with body-integral Anti-Shake technology and CCD Shift Mechanism
 - Exposures can be hand held up to eight times longer (3-stops), than when shooting without Anti-Shake
 - Supports a full-range of Konica Minolta AF lenses including macro, wide-angle, zoom, telephoto, and even mirror lenses.
 - Award winning Anti-Shake technology was selected as "European Photo Innovation of the Year 2004-2005" by EISA (European Imaging & Sound Association)

- ⇒ **APS-C Size 6.1-Megapixel CCD and Advanced Image Processing**
 - APS-C size 6.1-megapixel CCD captures high resolution image data
 - High-speed image processing is provided by a dedicated LSI
 - CxProcess™ III optimizes saturation, edge sharpness, and highlight/shadow contrast for improved color fidelity

- ⇒ **High-Performance AF System**
 - Wide focus area with 9-point AF with central cross hair sensor array providing high-precision auto focusing
 - AF system features both Predictive Focus Control and Omni-Dimensional Subject tracking
 - Four focusing modes ensure optimum performance:
 - ◆ AF-S for single shot AF
 - ◆ AF-C for continuous AF
 - ◆ AF-A automatically switches between AF-S and AF-C when it detects subject movement
 - ◆ Manual focus

 - Direct Manual Focus, which combines the advantages of AF operation with the ability to focus manually

- ⇒ **Extraordinary High-Definition, 2.5-inch Color LCD Display**
 - Large 2.5-inch color LCD with ultra-fine 207,000 pixel resolution
 - Capable of simultaneous image and histogram display
 - Can display images with overexposed and underexposed area highlighted for quick identification
 - Automatic focus-point detection with 10X enlargement makes it easy to check for correct focus
 - Simultaneously display all of the frames in an auto-exposure-bracketing series to facilitate "best shot" selection

MAXXUM 7D

Main Selling Points:

⇒ Menu and Navigation Display

- LCD monitor also works as a navigation system for advanced data display
- Comprehensive shooting information is indicated in large easy-to-read text
- Display automatically switches from horizontal to vertical format with camera position change
- Sensors located below optical viewfinder automatically switches off the display as you bring camera to your eye

⇒ High-Performance, Through-the-Lens Viewfinder

- Spherical acute matte focusing screen for accurate and bright focusing
- Optical glass pentaprism viewfinder features 0.9X magnification
- 95% field-of-view for easy scene evaluation
- Long eye-relief viewfinder of 25mm from eyepiece / 21mm from eyepiece frame
- Adjustable Diopter control of $-3.0 \sim +1.0$
- Super impose LED screen displays the active AF-sensor in red for visible confirmation
- Equipped with Anti-Shake scale and full-information meter index
- Optional factory installed focusing screens: Type L, Type M, or Type ML

⇒ Advanced Metering System

- Versatile metering system incorporating 14-segment honeycomb pattern metering, center-weight average or spot metering
- Six Exposure Modes including P/Pa/Ps/Full Auto/A/S/M
- Exposure Compensation in ± 3 EV in 0.5 increments or ± 2 EV in 0.3 increments

⇒ Powerful, Versatile, and Creative Flash Performance

- ADI, Pre-flash TTL, and Manual flash control available
- Built-in flash with a wide-coverage of 24mm
- Flash Compensation in ± 2 EV in 0.5 increments
- Flash Modes include fill-flash, red-eye, rear sync, wireless/remote off camera, and high-speed sync
- Supports full-featured flash photography with Konica Minolta's D-series flashes as well as Macro flashes using the MFC-1000 control unit

⇒ Quality Materials and Intelligent Control Layout

- Magnesium-alloy front body panel and base plate ensure outstanding reliability and durability that experienced SLR users demand
- MAXXUM SLR series intuitive controls include separate top-mounted dials for exposure mode and exposure/flash compensation settings
- Frequently operated White Balance Control is allocated to an independent lever and positioned on the camera top for quick easy operation

MAXXUM 7D

Main Selling Points:

⇒ Comprehensive Image Adjustment Controls

- Image Correction is a five-step fine control for sharpness, contrast, color saturation, and hue
- Versatile White Balance control: Automatic, Preset (Daylight, Shade, Cloudy, Flash, Tungsten, Fluorescent), and Custom
- Professional level of color control is available with numeric settings of color temperature over a range from 2,500K to 9,900K in 100K increments
- Zone Matching allows the precise reproduction of tonal gradations in highlight and shadow areas

⇒ Pro-Oriented Features for Extended Shooting Capabilities

- 128MB high capacity buffer memory allows fast data transfer for enhanced performance.
- RAW+JPEG simultaneous recording
- Continuous advance of up to 9-consecutive frames at up to 3-fps in both RAW and RAW+JPEG mode (15 frames JPEG, L-FINE)
- Mirror lockup shutter-release delay
- Depth-of-field preview
- Optional Vertical Control Grip provides superior control and comfort for vertically oriented images
- Compatible with our complete line of Maxxum AF lenses

⇒ Software and Connectivity Tools for Easy Image Downloading, Editing, and Library Management

- DiIMAGE Viewer software enables you to view images and EXIF data
- Optional DiIMAGE Master features an advanced algorithm for high-quality RAW data processing
- Hi-Speed USB 2.0 connectivity for fast, efficient file transfer



MAXXUM 7D

Accessories Compatibility:

Maxxum AF Lenses	OK	
V-Lenses	NG	
Flashes 4000AF 2800AF/1800AF Macro 1200AF 5200i 3200i/2000i 5400xi 3500xi/2000xi 5400HS 5600HS (D) 3600HS (D) 2500 (D) Macro Controller MFC-1000 SF-1 X-series Flash Other Manufacturers	NG NG NG NG NG NG NG NG OK OK OK OK NG NG NG	Adapter required, Manual flash available Adapter required, Fill-flash only Adapter required, Fill-flash only Manual flash available Fill-flash only Manual flash available Fill-flash only Manual flash available Fill-flash only Adapter required, Fill-flash only
Flash-related Accessories Close-up Diffuser CD1000 Wireless Flash Remote Controller Off-camera Shoe OS-1100 Off-camera Cable Flash Adapter FS-1100	NG NG OK OK OK	Cannot attach directly because of flash height
Viewfinder-related Accessories Anglefinder Vn Magnifier Vn Eye-piece Cup Diopter Adjustment 1000 Focusing Screen	OK OK OK OK OK	Optional factory installed focusing screens: Type L, Type M, or Type ML
Remote Release Accessories Wireless Controller IR-1 Set Remote Cord RC-1000S Remote Cord RC-1000L Data Receiver DR1000	NG OK OK NG	
Camera Case	OK	New (CS-7D)
Neck Strap Set	OK	New
Cap-related Accessories Body Cap BC-1000 Eye Piece Cap Accessory Shoe Cap	OK OK OK	
LCD Protect Cap	OK	New
Dedicated Vertical Control Grip	OK	New (VC-7D)
External Battery Pack EBP-100	NG	Attachable, but performance not guaranteed
Data Saver DS-100	NG	

MAXXUM 7D

Specifications:

Camera Type: Interchangeable-lens digital SLR camera

Lens Mount: Minolta A-type bayonet mount

Image Capture: Total pixels: 6.3 million, effective pixels: 6.1 million CCD (23.5mm x 15.7mm, Interline primary color, interlace scan)

Sensitivity: Auto and 100, 200, 400, 800, 1600, and 3200 ISO equivalents

Aspect Ratio: 3:2

Recording: Recording Media: Type I and Type II CompactFlash cards, Microdrive, SD Memory Cards, and MultiMedia Cards with optional CompactFlash Adapter SD-SF

File Format: JPEG, RAW, RAW+JPEG (DCF 2.0 compliant, DPOF (supported by printing functions in ver/1.1), Exif 2.2)

Number of Recorded Pixels: L: 3008 x 2000, M: 2256 x 1496, S: 1504 x 1000

Storage Capacity: Approximate storage capacity of a 256MB CompactFlash Card:

	L	M	S
RAW	26 frames	—	—
RAW+JPEG	19 frames	21 frames	23 frames
Extra Fine	41 frames	72 frames	157 frames
Fine	81 frames	141 frames	292 frames
Standard	1138 frames	1235 frames	463 frames

Color Modes: Natural: sRGB, Natural +: sRGB, Adobe RGB

Image Quality Modes: Standard, Fine, Extra Fine, RAW, RAW+JPEG (Fine)

Image Correction: Contrast, Color saturation, Sharpness, Hue (5 levels)

Noise Reduction: Available (at shutter speed longer than 1 sec., ON/OFF selectable)

Delete Function: Single frame, Marked frames, or All frames in a folder in card can be deleted.

White Balance Control: Automatic, Preset (Daylight, Shade, Cloudy, Tungsten, Fluorescent, Flash), Custom, Color temperature setting available

Playback: LCD monitor: 2.5-inch TFT color; Total pixels: 207,000; Navigation system: (Enlarged display, Automatic rotate function); Number of frame displayed: 1, Index (4, 9, 16 selectable); Display mode: Image only, Image + text, Image + text + histogram; Enlarged playback (up to approx. 5x), Luminance limit Display, File browser, Slideshow, Instant bracket playback

Autofocus System: Through-the-lens (TTL) phase-detection system

AF Sensors: CCD line sensors (9 points, 8 lines with center cross-hair sensor)

AF Sensitivity Range: EV -1–EV18 (ISO 100)

Autofocus Area: Wide focus area, any local focus area is selectable from 9 point sensors

Focus Modes: Autofocus/Manual focus can be selected.

Autofocus Modes: Single-shot AF, Continuous AF, Automatic Autofocus (DMF is selectable in menu); Predictive focus control for moving subjects; Auto-tracking focus point display

Focus Lock: By pressing the shutter release button halfway down

AF Illuminator: With built-in flash, 3.3–16.4 ft.

Autoexposure System: TTL metering using 14-segment honeycomb-pattern SPC (14-segment Honeycomb-pattern/Center-weighted/Spot metering)

Metering Range: EV 0–20 (EV 3–20 in spot metering) *at ISO100 with f/1.4 lens

Exposure Modes: P/Full-auto program (Programmed AE with program shift), A (Aperture priority), S (Shutter priority), M (Manual)

Exposure Compensation: +/- 3 EV in 1/2 increments, +/- 2 EV in 1/3 increments

AE Lock: Automatically activated with AF lock, Available with AE lock button

Flash Metering: ADI, Pre-flash TTL, Manual flash control

Guide Number: 12 (in meters at ISO 100), 17 (in meters ISO 200)

Flash Coverage: 24mm

Recycling Time: 3 sec. (approx.)

Flash Control: Manual switchover type. Lift-up for Fill Flash, push down for Flash Cancel

Flash Modes: Fill Flash, Flash Cancel, Red-eye Reduction (pre-flash), Wireless/Remote Off-camera Flash, Rear Flash Sync., High-Speed Sync

Flash Compensation: +/- 2 EV in 1/2 increments

Accessory External Flashes: Program Flash 5600HS(D), 3600HS(D), 2500(D), Macro Twin Flash 2400*, Macro Ring Flash 1200* with flash sync. terminal

*Macro Flash Controller is necessary

Shutter: Electronically-controlled, vertical-traverse, focal-plane shutter

Shutter Speed Range: 30–1/4000 sec., Bulb

Flash Sync Speed: 1/160 sec. (with Anti-shake OFF), 1/125 sec. (with Anti-shake ON)

Drive Modes: Single, Continuous; 10 sec. /2 sec. self-timer; Single bracket, Continuous bracket

Continuous Advance: Approx 3 fps

Approximate number of frames that can be captured at one time:

	L	M	S
RAW	9 frames	-	-
RAW+JPEG	9 frames	9 frames	9 frames
Extra fine	12 frames	14 frames	20 frames
Fine	15 frames	19 frames	30 frames
Standard	19 frames	26 frames	43 frames

L: 3008 x 2000, M: 2256 x 1496, S: 1504 x 1000

Exposure Bracketing: In 0.3/0.5 EV increments, 3/5 frames

Interval Recording: Interval time: 30 sec. / 1–10, 15, 20, 30, 45, 60min., 2–240 frames. Start timer is equipped (Setting: 0.5–24H, in 0.5 increments)

Other Functions: Instant playback, Customizing, Zone matching

Anti-Shake: CCD-Shift Anti-shake system with LED indicator in viewfinder; Anti-shake effect equivalent to 2–3 steps in shutter speed (Actual effect varies depending on shooting conditions and the lens used.)

Viewfinder: Eye-level fixed pentaprism

Focusing Screen: Spherical Acute Matte (G-type standard)

*Interchangeable focusing screens available (type M, L, ML) at service facilities.

Field-of-View: Approx. 95%

Magnification: 0.9X (with 50mm lens focused on infinity)

Diopter Control: -3.0 to +1.0 m-1

Eye Relief: 25mm from the eyepiece, 21mm from the eyepiece frame in -1 m-1; Eyepiece cup is removable.

Video Output: NTSC / PAL

Audio Signal: Yes

Printing Output Control: Exif Print, PRINT Image Matching II, PictBridge

PC Interface: USB 2.0 High-Speed

Remote Function: Remote data storage available (Remote-storage function software DiIMAGE Transfer for Maxxum7D is available for free download. (It will be released in January 2005.)

MAXXUM 7D

Specifications:

Power: One NP-400 lithium-ion battery

Battery Condition Indication: 4-stage indicator appears when camera is turned on

External Power Source: 6V DC (with specified AC adapter AC-11), Vertical Control Grip VC-7D

Battery Performance (with fresh batteries): Number of recording images: Approx. 400 frames (CIPA measurement*1) Conforming to CIPA standard test method with a compact flash card and an NP-400 lithium-ion battery; Approx. 600 frames (Konica Minolta measurement A*2); Approx. 2000 frames (Konica Minolta measurement B*3)

Conditions: Anti-Shake ON, Recording media: 512MB CompactFlash Cards, Battery: lithium-ion Battery NP-400, *1: CIPA: Camera & Imaging Products Association *2: Flash OFF, other conditions are same as CIPA measurement. *3: Drive mode: 5 frames continuous shooting, Flash OFF, Instant Playback: NO

Dimensions (W x H x D): 5.91 x 4.17 x 3.05 inches

Weight: 26.81 ounces (without batteries and recording media)

Operating Temperature: 32–104° F

Included Accessories: DiMAGE Viewer CD-ROM, Lithium-ion Battery NP-400, Lithium-ion Battery Charger BC-400, Wide Strap WS-4, Shoe-Cap SC-1000, Eyepiece Cap II, Eyepiece Cup EC-1400, Body Cap BDC-1000, Remote Cord Clip, LCD Monitor Protect Panel MPP-1000, USB Cable USB-2, Video Cable VC-500

Main Optional Accessories: Vertical Control Grip VC-7D, Camera Case CS-7D, AC Adapter AC-11, SD-CF Card Adapter SD-CF 1, Remote Cord RC-1000S, Remote Cord RC-1000L

Compatible Computers:

IBM PC/AT compatible computers running Windows 98*/Me/2000 (Professional)/XP (Home/Professional)

Macintosh computers running OS9.0–9.2.2/OS X v10.1.3–10.1.5/v10.2.1–10.2.8/v10.3–10.3.5

- The computer and operating system must be guaranteed by their manufacturers to support USB interface.
- Problems may be encountered depending on what other USB devices are being used in parallel with this product.
- Only a built-in USB port is supported. Problems may be encountered when the camera is connected to a USB hub.
- Normal operation may not be possible even when all the system requirements are met.

* Users with Windows 98 and Windows 98 Second Edition operating system must install dedicated driver software included in the DiMAGE viewer CD-ROM.

Specifications, accessories, and system requirements are based on the latest information available at the time of printing and are subject to change without notice.

MAXXUM, DiMAGE, CxProcess are trademarks or registered trademarks of Konica Minolta Camera, Inc.

Windows is either a registered trademark or a trademark of Microsoft Corporation in the United States and/or other countries. Macintosh is a trademark or registered trademark of Apple Computer Inc. Other corporate names and product names are trademarks or registered trademarks of their respective companies.



AF ZOOM 17-35mm f/2.8-4 D

Konica Minolta's AF ZOOM 17-35mm f/2.8-4 D lens offers superior handling characteristics and outstanding image quality, making it ideal for a diverse range of shooting situations.



Lens Highlights:

- ⇒ Built-in distance encoder supporting Konica Minolta's ADI (Advanced Distance Integration) flash metering
- ⇒ Employs one AD (anomalous dispersion) glass element to combat distortion and aberrations
- ⇒ Circular aperture producing naturally defocused backgrounds
- ⇒ 77mm filter diameter

Technical Specifications

Konica Minolta AF ZOOM 17-35mm f/2.8-4 (D)

Type:	35mm-format autofocus lens
Focal length:	17-35mm
Angle of view:	104° (17mm) - 63° (35mm)
Aperture:	Maximum: f/2.8(17mm) – 4(35mm) Minimum: f/22(17mm)-32(35mm) Blades: 7-blade circular
Optics:	Type: 4-component, mechanical compensation zoom Construction: 14 elements in 11 groups Includes one AD (anomalous dispersion) glass elements and three Aspheric elements.
Focusing:	AF motor: Camera body (coupler) Method: Internal focusing Minimum focus distance: 0.98 ft Maximum magnification: 1/5.4
Filter diameter:	77mm
Lens hood:	Petal-type hood with bayonet mount
Dimensions:	3.27(dia.) x 3.33 (length) in.
Weight:	15.17oz.
Lens mount:	Minolta A mount
Standard accessories:	Front cap ,Rear cap, Lens hood
Optional accessory:	Soft case

AF ZOOM 28-75mm f/2.8 D

Konica Minolta's AF ZOOM 28-75mm f/2.8 D lens offers superior handling characteristics and outstanding image quality, making it ideal for a diverse range of shooting situations.



Lens Highlights:

- ⇒ Built-in distance encoder supporting Konica Minolta's ADI (Advanced Distance Integration) flash metering
- ⇒ Employs three AD (anomalous dispersion) glass elements to combat distortion and aberrations
- ⇒ Circular aperture producing naturally defocused backgrounds
- ⇒ 67mm filter diameter

Technical Specifications

Konica Minolta AF ZOOM 28-75mm f/2.8 (D)

Type:	35mm-format autofocus lens
Focal length*:	28-75mm
Angle of view:	75° (28mm) - 32° (75mm)
Aperture:	Maximum: f/2.8 Minimum: f/32 Blades: 7-blade circular
Optics:	Type: 4-component, mechanical compensation zoom Construction: 16 elements in 14 groups Includes three AD (anomalous dispersion) glass elements and four Aspheric elements.
Focusing:	AF motor: Camera body (coupler) Method: Internal focusing Minimum focus distance: 1.08 ft Maximum magnification: 1/3.9
Filter diameter:	67mm
Lens hood:	Petal-type hood with bayonet mount
Dimensions:	2.87(dia.) x 3.7 (length) in.
Weight:	17.99oz.
Lens mount:	Minolta A mount
Standard accessories:	Front cap ,Rear cap, Lens hood,
Optional accessory:	Soft case

Vertical Grip VC-7D

The VC-7D is designed exclusively for use with the Maxxum 7D to provide sure and comfortable handling when taking vertically framed images. It also provides the user with the ability to change between different power sources. The available power sources include NP-400 lithium-ion, AAsize alkaline and AA-size nickel metal hydride batteries.



Available Camera	Maxxum 7D
How to Attach	Fastens on bottom of the camera, by the attaching screw fit to the tripod socket. Remove battery from the camera, open the battery chamber door, insert the contact part of the VC-7D into the battery chamber.
Functions	
Main Switch	Turn on/off function of the VC-7D.
Shutter-release button	The same as the Maxxum 7D specification.
Front Dial	The same as the Maxxum 7D specification. AF area can be selected by simultaneous operation of AF area button.
Rear Dial	The same as the Maxxum 7D specification.
AE-lock button	The same as the Maxxum 7D specification.
AF/MF button	The same as the Maxxum 7D specification.
AF area button	Push-type button. AF area can be selected by simultaneous operation of the Front dial.
Signal terminal	To transmit the control signals of the VC-7D to the camera, 8 pcs. Brush-type terminals are incorporated at the camera insert part.
Battery	
Battery	2 pcs. NP-400 Lithium-ion battery. 6 pcs. AA alkaline or Nickel Metal Hydride.
Battery Contact	Power output to camera body.
Recordable No. of images	TBD
Power detection	Power can be supplied from VC-7D.
Others	
Tripod Screw	JIS tripod screw
Strap holder	2 pcs. One on each side of the VC-7D.
Dimensions (WxDxH)	5.7 x 3.2 x 1.9"
Weight	9.4 oz
Accessories	Optional holding strap HS-1

DiMAGE A200



Konica Minolta is pleased to introduce the new DiMAGE A200 8.0-megapixel SLR-type high-performance digital camera that is perfect for all levels of photographic experience from advanced amateur to creative beginner. Equipped with Konica Minolta's Anti-Shake technology featuring a unique CCD-shift mechanism where the CCD shifts to minimize the effect of camera shake up to 3 shutter speeds. Konica Minolta's Anti-Shake function delivers a highly effective way to take high-quality images with low-ISO hand-held shooting under telephoto and low lighting situations.

In addition, the camera's newly employed vari-angle, TFT color LCD monitor can be rotated up to 270° vertically and 180° horizontally, allowing photographers unrestricted shooting at high and low angles. The included multi-functional wireless remote control makes it easier to take self-portraits and movies whenever and wherever. And, because the LCD provides high-speed, real-time viewing at 60 frames per second, there is minimal lag time between the on-screen display of moving images and the press of the shutter release.

The DiMAGE A200 comes equipped with an 8-megapixel 2/3-type progressive primary-color CCD with 8.0 million effective pixels for super-high-resolution. The Konica Minolta 7X optical GT lens ensures that light gets to the CCD sensor with maximum fidelity. Plus, with its proprietary new advanced LSI engine and CxProcess™ III image-processing technology, the DiMAGE A200 provides high-speed and stress-free image processing with low power consumption. And, its ability to suppress noise and provide exceptionally accurate color reproduction means that users get high-quality images every time.

DiMAGE A200

Main Selling Points:

⇒ Proprietary CCD-Shift technology for fulltime Anti-Shake protection

- Equipped with Konica Minolta's Anti-Shake technology featuring a unique CCD-shift mechanism where the CCD shifts to minimize the effect of camera shake
- Exposures can be hand held up to eight times longer (3-stops), than when shooting without Anti-Shake
- Award winning Anti-Shake technology was selected as "European Photo Innovation of the Year 2004-2005" by EISA (European Imaging & Sound Association)

⇒ Superior Picture Quality

- 8.3 million pixels (8.0 effective), 2/3-type interlaced primary color CCD
- Improved image processing technology "CxProcess™ III"
- Minolta GT lens 28~200mm, F2.8/F3.5, APO
- 12-bit A/D processing
- Extra Fine JPEG compression mode
- Easily set pixel count to photographic situation: 8M/5M/3M/2M/VGA
- Incorporates 3:2 aspect ratio mode (8M only)

⇒ Wide Image Range and Flexibility

- High speed shutter - 1/3200 sec
- 28~200mm high magnification lens
- 7X Optical zoom with 2X Digital (4X Interpolate Digital Zoom Mode)
- Flex Digital Magnifier (FDM)
- Versatile shooting functions commonly found on SLR film based cameras
- Compatible with Maxxum AF-SLR accessories
- Macro capability at Telephoto and Wide angle

⇒ Convenience that is only available on a Digital Camera

- EVF incorporating 235,000 pixels
- 100% field-of-view
- Vari-angle LCD adjustment: 270° Vertical and 180° Horizontal
- Full information display in the Viewfinder/LCD
- Digital Effects Control (Filter, Color Saturation, and Contrast)
- Digital Subject Program Selection (Portrait, Sports Action, Sunset, Night Portrait/Night View)
- Simultaneously records RAW & JPEG files
- Versatile White-balance control (Auto, Daylight, Tungsten, Shade, Cloudy, Flash, Fluorescent White, Fluorescent Neutral White, and 2-Custom)
- Three frame White Balance Bracketing (WB L and WB H)



DiMAGE A200

Main Selling Points:

⇒ **Convenience that is only available on a Digital Camera (Continued)**

- Camera sensitivity: Auto ISO 64, 100, 200, 400, 800
- Creative Color Control (Vivid sRGB, Natural sRGB, Portrait sRGB, Adobe RGB, and B&W)
- ICC profile embedded in output file (except RAW files)
- Real time histogram
- Selectable Grid & Scale screens
- Movie recording with audio at 30fps in 320x240/640x480 size or 800x600 @15fps

⇒ **Superb Operability**

- 11 point Area AF with user selectable zones
- Continuous AF with Predictive Focus Control
- Flex Focus Point (spot metering area can now be linked to FFP)
- DMF (Direct Manual Focus)
- Exposure Compensation +/-2 EV in 0.3 increments
- Flash Compensation +/-2 EV in 0.3 increments
- Three frame Exposure Bracketing in 0.3 or 0.5 EV increments
- Continuous Advance of 2.0fps @ 3264x2448
- High-speed Continuous Advance of 2.3fps @ 3264x2448
- UHS Continuous Advance of 10fps @ 640x480
- All playback functions enabled in QV mode
- Available Program Shift (PA & PS modes)
- Aperture settings can be adjusted in 1/3 stop values up to F11
- Simple and easy-to-understand controls and operation
- Separate buttons for frequently used functions
- Data Imprinting

⇒ **Satisfying Camera Appearance**

- Classy black exterior
- Newly designed grip with enhanced texture for easy handling

DiMAGE A200

Specifications:

Number of Effective Pixels: 8.0 million
CCD: 2/3-type interlaced primary-color CCD
Total Pixels: 8.3 million
A/D Conversion: 12-bit
Camera Sensitivity: Auto, ISO 64, 100, 200, 400, 800 equivalents
Focal Length: 7.2 - 50.8mm (35mm equivalent: 28 - 200 mm)
Lens Construction: 16 elements in 13 groups (includes two AD glass elements and two aspheric elements)
Maximum Aperture: f/2.8 - f/3.5
Minimum Focus Distance: 1.6 ft. (0.5m) from CCD
Macro Focus Range: At 7.2mm: 11.8 - 23.6 in. from CCD; 8.3 - 20 in. from front of lens. At 42.7 - 50.8mm: 9.8 - 23.6 in. from CCD; 5.1 - 19.7 in. from front of lens
Maximum Magnification: 0.177x (1: 5.65) Equivalent to 0.7x (1: 1.43) in 35mm format
Area Covered at Maximum Magnification: 2.05 x 1.54 in.
Optical Zoom Control: Manual zoom ring
Filter Diameter: 49mm
Viewfinder Type: EVF (Electronic viewfinder)
Viewfinder LCD: 0.44 inch TFT liquid-crystal microdisplay;
Total pixels: 235,000 pixels
LCD Monitor: 1.8 inch low-temperature polysilicon TFT color;
Vari-angle: 180° Horizontally, 270° Vertically; Total pixels: 134,000
Automatic Monitor Amplification: Activates in low light.
Field of View: EVF: 100% (approx.); External LCD monitor: 100 % (approx.)
Display Mode Switch: Electronic-viewfinder display, External LCD-monitor display
Diopter Control: -5 ~ +2 m⁻¹
Eye Relief: 22 mm at -1 m⁻¹
Shutter: CCD electronic shutter and mechanical shutter
Shutter Speed Range: 30 - 1/3200 sec. (30 - 1/1600 sec. in S, M - mode); Bulb (max. 30 sec.)
Autofocus System: Video AF
Autofocus Areas: Wide focus area, 11 - point selectable, Spot focus point; (Flex Focus Point control is available with the spot focus point)
Focus Modes: Autofocus: Single-shot AF, Continuous AF, Full-time AF. Manual focus or Flex Digital Magnifier (FDM), Automatic-magnification.
Full-Time AF: With the spot focus point or Flex Focus Point; full-time AF can be disabled.
Subject Tracking AF: With continuous AF.
Focus Lock: By pressing shutter-release button partway down.
Metering: Multi-segment, Center-weighted, Spot (center or with Flex Focus Point)
Multi-Segment Metering: 256 segments
Exposure Control Range: Programmed AE and aperture-priority modes: Wide: Ev -1 - 18, Telephoto: Ev -0.5 - 18; Shutter-priority and manual modes: Wide: Ev -2 - 18, Telephoto: Ev -1.5 - 18
Exposure Modes: Programmed AE (with program shift), Aperture priority, Shutter priority, Manual
Digital Subject Programs: Portrait, Sports action, Sunset, Night portrait/Night View
Exposure Compensation: ± 2 Ev in 1/3 increments
AE Lock: With AE-lock button or by pressing the shutter-release button partway down
Flash Control: Automatic and Manual flash control

Flash Range: Wide: 1.6 - 12.5 ft. (approx.);
Telephoto: 1.6 - 9.8 ft. (approx.) (Camera sensitivity: auto)
Flash Modes: Fill-flash, Red-eye reduction, Rear flash sync, Slow-sync
Flash Recycling Time: 5 sec. (approx.)
Flash Compensation: ± 2 Ev in 1/3 increments
Flash Sync Speed: All shutter speeds
External Flashes: Auto-flash metering with Program/Maxxum Flash 2500 (D), 3600HS (D), 5600HS (D), Macro Twin Flash 2400,* Macro Ring Flash 1200.*
*Macro Flash Controller is necessary.
Continuous Advance: UHS continuous advance: 10 fps (640x480); High-speed continuous advance: 2.3 fps (max.); Standard continuous advance: 2.0 fps (max.) Actual speed may vary depending upon the subject and camera settings.

Approximate number of frames that can be captured at one time:

	3264x2448	2560x1920	2080x1560	1600x1200	640x480
RAW	5 frames	-	-	-	-
Extra fine	5 frames	5 frames	5 frames	5 frames	5 frames
Fine	5 frames	5 frames	5 frames	5 frames	5 frames
Standard	5 frames	5 frames	5 frames	5 frames	5 frames

* Actual number of images may vary depending upon the subject and camera settings.

Exposure Bracketing: Three-frame bracket in 0.5 and 0.3 Ev increments

Digital Enhanced Bracketing: Three-frame White Balance bracket in fixed increments.

Self-Timer: 10 sec., 2 sec. (approx.)

Remote-Control: RC-D1 Wireless Remote Included

Movie: Standard movie mode: 15 min. (max.) at 30 fps with monaural audio; Night movie mode: 15 min. (max.) at 30 fps with monaural audio.

Audio: None with still image

Color Modes: Natural Color (sRGB), Vivid Color (sRGB), Portrait (sRGB), Embedded Adobe RGB, Black & white (neutral and toned)

White Balance Control: Automatic; Preset (Daylight, Tungsten, Shade, Cloudy, Flash, Fluorescent 1, and Fluorescent 2 settings); Custom (two settings)

Sharpness Settings: Three levels (Soft, Normal, Hard)

Digital Effects Control: Color saturation, Contrast compensation, Filter

Noise Reduction: User selectable dark noise reduction

Digital Zoom: 2X with still images; 4X Interpolate mode with still images

Data Imprinting: Year/month/day (Format can be changed.);

Month/day/hour/minute; Imprinting can be disabled.

Image Quality Modes: RAW, RAW+JPEG, Extra fine, Fine, Standard

Number of Recorded Pixels (Still images): 3264 x 2448, 3264 x 2176 (in 3:2 mode), 2560 x 1920, 2080 x 1560, 1600 x 1200, 640 x 480

Number of Recorded Pixels (Movie clips): 320 x 240@ 15 or 30fps in standard and night movie modes; 640 x 480 @15 or 30fps in standard and night movie modes; 800 x 600 @15fps in standard and night movie mode

Storage Capacity: Approximate storage capacity of a 128MB CF card:

	3264x2448	2560x1920	2080x1560	1600x1200	640x480
RAW	10 frames	-	-	-	-
RAW+JPEG	9 frames	9 frames	9 frames	10 frames	10 frames
Extra fine	19 frames	32 frames	49 frames	79 frames	390 frames
Fine	31 frames	50 frames	78 frames	122 frames	558 frames
Standard	62 frames	97 frames	150 frames	229 frames	781 frames
Movie	5 minutes 55 seconds with 320x240 images @15fps				

* Actual number of images may vary depending upon the subject and memory card used.

DiIMAGE A200

Specifications:

File Formats: JPEG, Motion JPEG (MOV), RAW, WAVE; DCF 2.0-compliant, DPOF-compliant (Supported by printing functions in ver. 1.1), Exif 2.21

Printing Output Control: Exif Print, PRINT Image Matching II, PictBridge

Recording Media: Type I and Type II CompactFlash cards; IBM Microdrive (170MB, 340MB, 512MB, 1GB, 4GB)

Computer Interface: USB (*2.0 High speed)

AV Output: NTSC, PAL (selected on the camera)

Batteries: One NP-800 lithium-ion battery

Battery Performance (Playback): Approximate continuous playback time: 330 min. with NP-800 lithium-ion battery, External LCD monitor on, EVF off.

Battery Performance (Recording): Approximate number of recorded images: 260 frames with NP-800 lithium-ion battery, EVF off, External LCD monitor on, Full-size images (3264 x 2448), Fine image quality, No instant playback, Flash used with 50% of the frames.

External Power Source: 6V DC with specified AC adapter (sold separately)

Dimensions: 4.49 (W) x 3.15 (H) x 4.53 (D) in.

Weight: 17.8 oz. without batteries or recording media (approx.)

Operating Temperature: 32 - 104°F

Included Accessories: Neck Strap NS-DG8000, Lens Cap (49mm) LF-1349, Accessory Shoe Cap, AV Cable AVC-500, USB Cable USB-3, Lens Shade DLS-3, Lithium-ion Battery NP-800, Lithium-ion Battery Charger BC-900, Wireless Remote Control RC-D1, DiIMAGE Viewer Software CDRom, ULEAD Video Studio 8 SE

Optional Accessories: Telephoto Converter ACT-100, Wide-angle Converter ACW-100, AC Adapter AC-11, Leather Neck Strap NS-DG3000, CompactFlash Adapter for SD Memory Cards SD-CF1, Step Up Adapter 49mm - 62mm, Accessory Shoe Cap SC-1000, Maxxum Flash 5600HS (D) Flash with case, stand, wide-angle adapter, Maxxum Flash 3600HS (D) Flash with case, stand, wide-angle adapter, Maxxum Flash 2500HS (D) Flash with case, Macro Ring Flash set; contains Macro Flash Controller, Macro Ring Flash 1200, Macro Twin Flash set; contains Macro Flash Controller, Macro Twin Flash 2400, DiIMAGE Master DMA-100

System Requirements:

IBM PC/AT compatible computers with Windows XP Home, Windows XP Professional, Windows Me, Windows 2000 Professional, Windows 98*, or Windows 98 Second Edition* and with a USB port as standard interface

Apple Macintosh computers with Mac OS 9.0 - 9.2.2, Mac OS X v10.1.3 - 10.1.5, or v10.2.1 - 10.2.8, v10.3 - 10.3.4 and with a USB port as standard interface

- The computer and operating system must be guaranteed by their manufacturers to support USB interface.
- Problems may be encountered depending on what other USB devices are being used in parallel with this product.
- Only a built-in USB port is supported. Problems may be encountered when the camera is connected to a USB hub.
- Normal operation may not be possible even when all the system requirements are met.

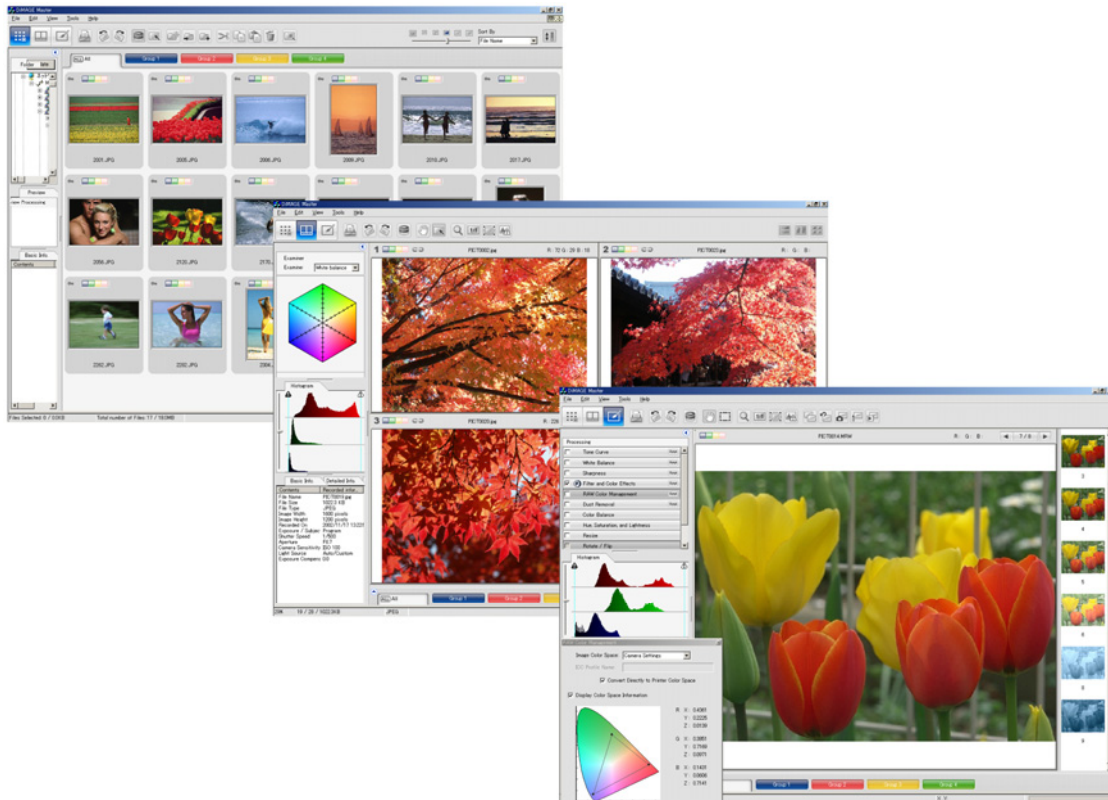
* Users with Windows 98 and Windows 98 Second Edition must install dedicated driver software included in the DiIMAGE A2 package.

Specifications, accessories, and system requirements are based on the latest information available at the time of printing and are subject to change without notice.

DiIMAGE, CxProcess are trademarks or registered trademarks of Konica Minolta Camera, Inc.

Windows is either a registered trademark or a trademark of Microsoft Corporation in the United States and/or other countries. Macintosh is a trademark or registered trademark of Apple Computer Inc. Other corporate names and product names are trademarks or registered trademarks of their respective companies.

DiMAGE Master



Konica Minolta will introduce a new image editing and enhancing application software, the “DiMAGE Master”, to the market with the launching of its world’s first digital SLR with body-integral anti-shake technology, Maxxum 7D, as well as the new digital EVF camera, DiMAGE A200. To satisfy the needs from DSC users for a more practical software with advanced and easy-to-use features, such as filing , editing, processing and printing of images, the DiMAGE Master is an optional software application to improve creative workflow for advanced users. The newly developed 3D Lookup Table (3D-LUT) technology for RAW processing enables more accurate color reproduction, and can process any RAW images taken by a Konica Minolta digital camera. Diversified operations, such as viewing, classifying, correcting, printing and more, can be performed in the three main operating windows.

Boost Work Efficiency:

-Organizer Window

Users can browse images quickly with its instant thumbnail display. Focus checker quickly enlarges a small portion of an image with just a click of the mouse, it’s as simple as checking films on a light box with a magnifier to confirm focusing results. Images can be classified into four customizable categories with just clicking a button.

DiMAGE Master

-Examiner Window

Advanced and unique tools are available for accurate and effective comparison that helps to select the best shot from several images, such as which were taken under the same scene. The selected images can be interactively displayed and examined in detail on the base of quantitative analyses of exposure, histogram, white balance and focus.

-Photofinisher Window

The DiMAGE Master's Photofinisher window provides a sophisticated platform for image retouching with professional and user-friendly functions. Each editing screen for such as white balance adjustment, tone-curve tuning, can be opened from the tool menu in the Photofinisher window. The variation pallet allows an image to be corrected by comparing it to other slightly corrected images that are automatically displayed surrounding the original.

Main features:

-3D-LUT color conversion

It enables more accurate color reproduction by converting RAW image data precisely in individual color with the newly developed algorithm.

-Customizable classification

Image files can be easily organized into four customizable categories just by clicking a button or dragging and dropping.

-Focus checker

It enlarges a pointed portion of an image to confirm focusing results with just a mouse-click.

-Image comparison

The tools are available for comparing images side-by-side and interactively in details on the basis of objective analyses of histogram, white balance and so on.

-Color management

The color management system using ICC profiles is built for color matching, for instance, the ICC profile for QP paper renders the best color reproduction for use with Konica Minolta inkjet paper (QP paper).

-Image correction jobs

It helps to save image correction settings for easy application to other images.

DiMAGE Master

-Advanced sharpness correction

Sharpness can be appropriately enhanced by the precise and flexible adjustment of spatial frequency response.

-Snapshot

Image corrections can be stored temporarily as a thumbnail next to the displayed image.

-Apply processing function

It allows a batch processing of multiple corrected images and saving operations can be executed in a lump.

System requirements:

Item	IBM PC/AT compatible computers	Apple Macintosh series computers
CPU	Pentium II or higher (Pentium III or higher is recommended)	PowerPC G3 or later (G4 or later is recommended)
OS	Windows 2000 Professional, Windows XP Home/Professional	Mac OS X or later v10.1.3~v10.1.5, 10.2.1~10.2.8, v10.3.0~10.3.5
RAM	128MB or more (256MB or more is recommended)	128MB or more (256MB or more is recommended)
HDD	200MB or more of available hard-disk space	200MB or more of available hard-disk space
Monitor	XGA (1024 X 768) or higher	1024 X 768 or higher
Languages	English, Japanese, German, French, Spanish, Chinese (SC), Swedish and Italian	English, Japanese, German, French, Spanish, Chinese (SC), Swedish and Italian

DiIMAGE Master

DiIMAGE Master Workflow:

