

PDP MONITOR



Warning! Important Safety Instructions

CAUTION
RISK OF ELECTRIC SHOCK
DO NOT OPEN

CAUTION: TO REDUCE THE RISK OF ELECTRIC SHOCK, DO NOT REMOVE COVER (OR BACK). NO USER SERVICEABLE PARTS INSIDE. REFER SERVICING TO QUALIFIED SERVICE PERSONNEL.



This symbol indicates high voltage is present inside. It is dangerous to make any kind of contact with any inside part of this product.



This symbol alerts you that important literature concerning operation and maintenance has been included with this product.

Note to CATV system installer: This reminder is provided to call CATV system installer's attention to Article 820-40 of the National Electrical Code (Section 54 of Canadian Electrical Code, Part I), that provides guidelines for proper grounding and, in particular, specifies that the cable ground shall be connected to the grounding system of the building as close to the point of cable entry as practical.

Caution: FCC/CSA regulations state that any unauthorized changes or modifications to this equipment may void the user's authority to operate it.

Caution: To prevent electric shock, match the wide blade of plug to the wide slot, and fully insert the plug.

Caution: Danger of explosion if battery is incorrectly replaced.

Replace only with the same or equivalent type recommended by the manufacturer.
Dispose of used batteries according to the manufacturer's instructions.

Attention: pour éviter les chocs électriques, introduire la lame la plus large de la fiche dans la borne correspondante de la prise et pousser jusqu'au fond.

Important: One Federal Court has held that unauthorized recording of copyrighted PDP Monitor programs is an infringement of U.S. copyright laws.

Certain Canadian programs may also be copyrighted and any unauthorized recording in whole or in part may be in violation of these rights.

TO PREVENT DAMAGE WHICH MAY RESULT IN FIRE OR ELECTRIC SHOCK HAZARD, DO NOT EXPOSE THIS APPLIANCE TO RAIN OR MOISTURE.

Important Safety Information

Always be careful when using your PDP Monitor. To reduce the risk of fire, electrical shock, and other injuries, keep these safety precautions in mind when installing, using, and maintaining your machine.

- Read all safety and operating instructions before operating your PDP Monitor.
- Keep the safety and operating instructions for future reference.
- Heed all warnings on the PDP Monitor and in the operating instructions.
- Follow all operating and use instructions.
- Unplug the PDP Monitor from the wall outlet before cleaning. Use a damp cloth; do not use liquid or aerosol cleaners.
- Never add any attachments and/or equipment without approval of the manufacturer. Such additions can increase the risk of fire, electric shock, or other personal injury.
- Do not use the PDP Monitor where contact with or immersion in water is a possibility, such as near bath tubs, sinks, washing machines, swimming pools, etc.
- Do not place the PDP Monitor on an unstable cart, stand, tripod, floor, bracket, or table where it can fall. A falling PDP Monitor can cause serious injury to a child or adult, and serious damage to the appliance. Use only with a cart, stand, tripod, bracket, or table recommended by the manufacturer or sold with the PDP Monitor. Follow the manufacturer's instructions when mounting the unit, and use a mounting accessory recommended by the manufacturer. Move the PDP Monitor and cart with care. Quick stops, excessive force, and uneven surfaces can make the unit and cart unsteady and likely to overturn.
- Provide ventilation for the PDP Monitor. The unit is designed with slots in the cabinet for ventilation to protect it from overheating. Do not block these openings with any object, and do not place the PDP Monitor on a bed, sofa, rug, or other similar surface. Do not place it near a radiator or heat register. If you place the PDP Monitor on a rack or bookcase, ensure that there is adequate ventilation and that you've followed the manufacturer's instructions for mounting.
- Operate your PDP Monitor only from the type of power source indicated on the marking label. If you are not sure of the type of power supplied to your home, consult your appliance dealer or local power company.
- Use only a grounded or polarized outlet. For your safety, this PDP Monitor is equipped with a polarized alternating current line plug having one blade wider than the other. This plug will fit into the power outlet only one way. If you are unable to insert the plug fully into the outlet, try reversing the plug. If the plug still does not fit, contact your electrician to replace your outlet.
- On setup, please place the PDP Monitor on the table which has at least above 20cm height. (Do not place it in the floor)



FCC Information

- Protect the power cord. Power supply cords should be routed so that they won't be walked on or pinched by objects placed on or against them. Pay particular attention to cords at plugs, convenience receptacles, and the point where they exit from the unit.
- Unplug the PDP Monitor from the wall outlet and disconnect the antenna or cable system during a lightning storm or when left unattended and unused for long periods of time. This will prevent damage to the unit due to lightning and power-line surges.
- Avoid overhead power lines. An outside antenna system should not be placed in the vicinity of overhead power lines or other electric light or power circuits or where it can fall into such power lines or circuits. When installing an outside antenna system, be extremely careful to keep from touching the power lines or circuits. Contact with such lines can be fatal.
- Do not overload the wall outlet or extension cords. Overloading can result in fire or electric shock.
- Do not insert anything through the openings in the unit, where they can touch dangerous voltage points or damage parts. Never spill liquid of any kind on the PDP Monitor.
- Ground outdoor antennas. If an outside antenna or cable system is connected to the TV system with PDP Monitor, be sure the antenna or cable system is grounded so as to provide some protection against voltage surges and built-up static charges. Section 810 of the National Electrical Code, ANSI/NFPA No.70-1984, provides information about proper grounding of the mast and supporting structure, grounding of the lead-in wire to an antenna discharge unit, size of grounding conductors, location of antenna discharge unit, connection to grounding electrodes, and requirements for the grounding electrode.
- Do not attempt to service the PDP Monitor yourself. Refer all servicing to qualified service personnel. Unplug the unit from the wall outlet and refer servicing to qualified service personnel under the following conditions:
 - when the power-supply cord or plug is damaged
 - if liquid has been spilled on the unit or if objects have fallen into the unit
 - if the PDP Monitor has been exposed to rain or water
 - if the PDP Monitor does not operate normally by following the operating instructions
 - if the PDP Monitor has been dropped or the cabinet has been damaged
 - when the PDP Monitor exhibits a distinct change in performance
- If you make adjustments yourself, adjust only those controls that are covered by the operating instructions. Adjusting other controls may result in damage and will often require extensive work by a qualified technician to restore the PDP Monitor to normal.
- When replacement parts are required, be sure the service technician uses replacement parts specified by the manufacturer or those that have the same characteristics as the original part. Unauthorized substitutions may result in additional damage to the unit.
- Upon completion of any service or repairs to this PDP Monitor, ask the service technician to perform safety checks to determine that the PDP Monitor is in a safe operating condition.

This device complies with part 15 of the FCC Rules. Operation is subject to the following two conditions:
 (1) This device may not cause harmful interference, and
 (2) this device must accept any interference received, including interference that may cause undesired operation.

User Instructions

The Federal Communications Commission Radio Frequency Interference Statement includes the following warning:

NOTE: This equipment has been tested and found to comply with the limits for a Class B digital device, pursuant to Part 15 of the FCC Rules. These limits are designed to provide reasonable protection against harmful interference in a residential installation. This equipment generates, uses, and can radiate radio frequency energy and, if not installed and used in accordance with the instructions, may cause harmful interference to radio communications. However, there is no guarantee that interference will not occur in a particular installation.

If this equipment does cause harmful interference to radio or television receptions, which can be determined by turning the equipment off and on, the user is encouraged to try to correct the interference by one or more of the following measures:

- Reorient or relocate the receiving antenna.
- Increase the separation between the equipment and receiver.
- Connect the equipment into an outlet on a circuit different from that to which the receiver is connected.
- Consult the dealer or an experienced radio/TV technician for help.

User Information

Changes or modifications not expressly approved by the party responsible for compliance could void the user's authority to operate the equipment. If necessary, consult your dealer or an experienced radio/television technician for additional suggestions. You may find the booklet called How to Identify and Resolve Radio/TV Interference Problems helpful. This booklet was prepared by the Federal Communications Commission. It is available from the U.S. Government Printing Office, Washington, DC 20402, Stock Number 004-000-00345-4.

Warning

User must use shielded signal interface cables to maintain FCC compliance for the product. Declaration of conformity for products marked with FCC Logo. This device complies with Part 15 of the FCC Rules. Operation is subject to the following two conditions:
 (1) this device may not cause harmful interference, and

(2) this device must accept any interference received, including interference that may cause undesired operation.
 The party responsible for product compliance:

Provided with this monitor is a detachable power supply cord with IEC320 style terminations. It may be suitable for connection to any UL Listed personal computer with similar configuration. Before making the connection, make sure the voltage rating of the computer convenience outlet is the same as the monitor and that the ampere rating of the computer convenience outlet is equal to or exceeds the monitor voltage rating. For 100 Volt applications, use only UL Listed detachable power cord with NEMA configuration 5-15P type (parallel blades) plug cap. For 240 Volt applications use only UL Listed Detachable power supply cord with NEMA configuration 6015P type (tandem blades) plug cap.

IC Compliance Notice

This Class A digital apparatus meets all requirements of the Canadian Interference-Causing Equipment Regulations of ICES-003.

Notice de Conformité IC

Cet appareil numérique de classe A respecte toutes les exigences du Règlement ICES-003 sur les équipements produisant des interférences au Canada.

European Notice

Products with the CE Marking comply with both the EMC Directive (89/336/EEC), (92/31/EEC), (93/68/EEC) and the Low Voltage Directive (73/23/EEC) issued by the Commission of the European Community. Compliance with these directives implies conformity to the following European Norms:

- EN55022 : 1998 Class B
- EN55024 : 1998
- EN61000 - 3 - 2 : 1995
- EN61000 - 3 - 3 : 1995
- EN60950 (IEC60950) - Product Safety.

User Instructions

● **Screen Image retention**

Do not display a still image (such as on a video game or when hooking up a Pc to this Monitor) on the plasma monitor panel for more than 2 hours as it can cause screen image retention. This image retention is also known as “screen burn”. To avoid such image retention, refer to page 37 of this manual to reduce the degree of brightness and contrast of this screen when displaying a still image.

● **Cell Defects**

The Plasma monitor displays images using a group of minute pixels. Therefore, if 99.9% of the pixels indicate normal conditions, the monitor is acceptable and approved. You don't need to be concerned about the light emitted from part of the pixels or any pixels that are kept lit as your panel has been approved.

● **Warranty**

Warranty Period: One year starting from the purchase of your main system.
Warranty does not cover any damage caused by image retention.

Table of Contents

Start up
Your New Plasma Display Monitor 10
Remote Control Buttons 12
Turning the PDP On and Off. 14

Connecting PC and Operation
Connecting to a PC. 18
Adjusting the PC Screen 22
Changing the Position of the Image. 23
Picture Quality Adjustment. 24
Changing the Aspect Ratio 27
Enlarge of the Image (Zoom) 28
Move Expanded Picture (Pan). 29
Power Saver (PC mode only) 30

Connection (Connecting Receiver)
Connecting a VCR/Cable Box 32
Connecting a DTV Set-Top-Box/DVD 33

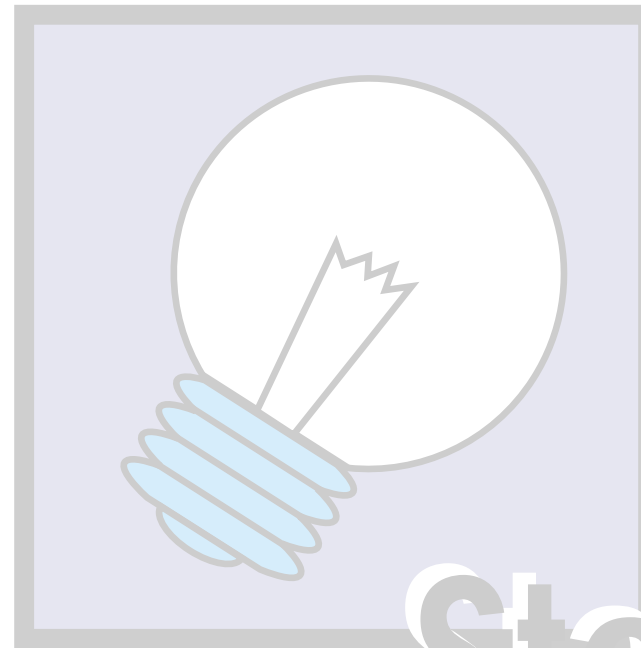
Picture Control
Using Automatic picture setting. 36
Customizing the Picture 37
Changing the Screen Size 38
Freezing the Picture. 39
Auto Pixel Shift 39

Sound Control
Using the Mute. 42
Adjusting the Volume. 43
Customizing the Sound 44

Time
Setting the Clock 46
Setting the Timers 48
Setting the Sleep Timer 50

Function Description
Selection the Menu Language. 52
Setting the Position 53
Setting the Turn Off Time of OSD 54
Setting the Pin 55
Using RS 232C cable (optional) 56

Appendix
Troubleshooting 58
Care and Maintenance 59
Specifications. 60

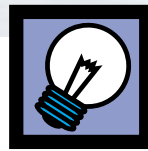


Start up

Start up

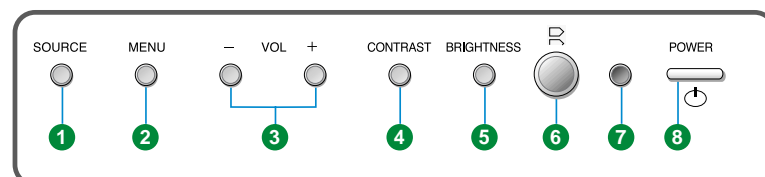


Your New Plasma Display Monitor	10
Remote Control Buttons	12
Turning the PDP On and Off	14



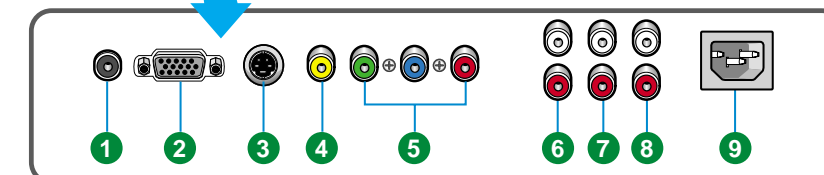
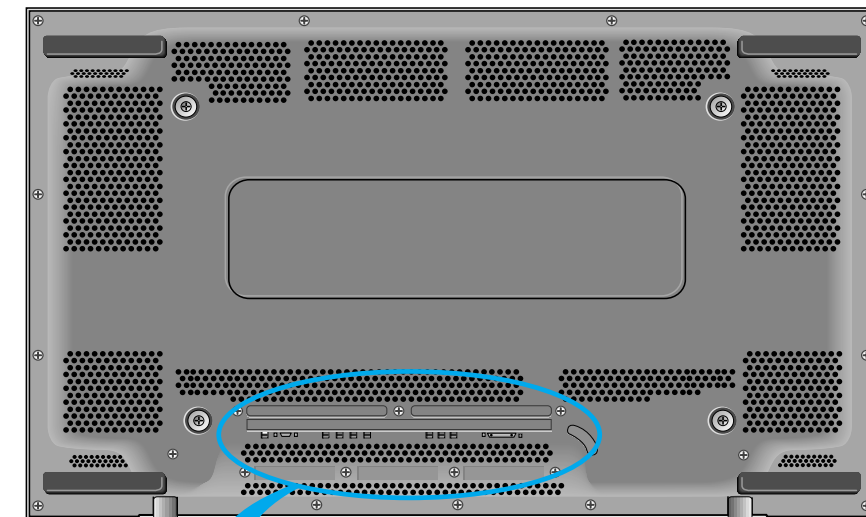
Your New Plasma Display Monitor

Front



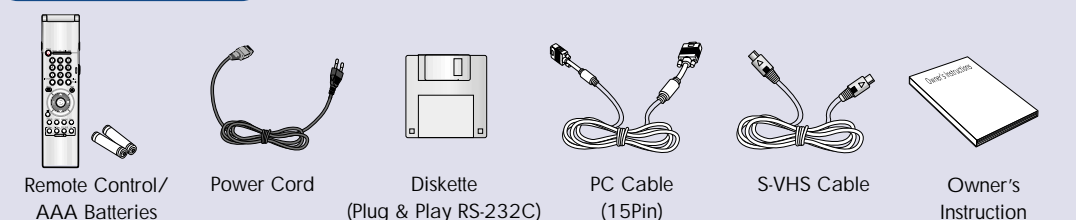
- 1 **Source** Press the display of the available video sources in sequence (i.e. PC, Video, S-Video, DVD, DTV).
- 2 **Menu** Press the see the on-screen menu.
- 3 **- Vol +** Press to lower or raise the Volume.
Press the volume +/- buttons to enter the sub-menu in the menu window.
To change items in the picture mode, press the volume +/- buttons.
- 4 **Contrast** Press to increase or decrease the value of the contrast.
To increase or decrease the value, press the volume +/- buttons.
- 5 **Brightness** Press to increase or decrease the value of the brightness.
To increase or decrease the value, press the volume +/- buttons.
When you select the item in the menu, move to contrast or brightness and then select the item you want.
- 6 **Remote Control Sensor** Aim the remote control towards this spot on the PDP Monitor.
- 7 **LED Lamp**
- 8 **Power Button** Press to turn the PDP on and off.

Rear



- 1 **RS-232C Input jack**
- 2 **PC Input jack (15pin)** Connect to the RGB output jack on your PC.
- 3 **S-video Input jack** Connect a S-Video signal from S-VHS VCRs or DVD players.
- 4 **Video Input jack** Connect a video signal from VCRs or DVD players.
- 5 **DTV/DVD Input (Y, Pb(Cb), Pr(Cr)) jacks** Connect a video signal from a DVD player or DTV receiver.
- 6 **PC** Connect to the Audio output jack on your PC.
- 7 **Video/S-Video** Connect to the Audio output jack on your Video/S-Video.
- 8 **DTV/DVD** Connect to the Audio output jack on your DTV/DVD.
- 9 **Power Input jack**

Checking Parts

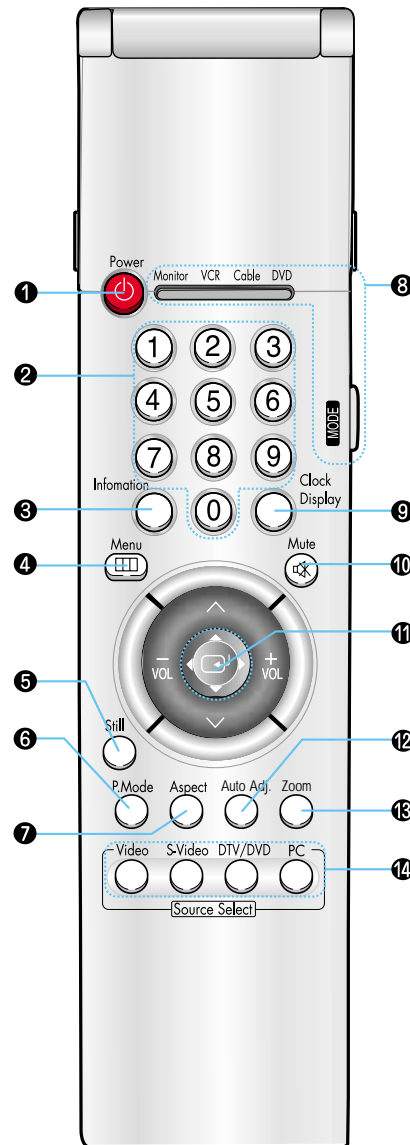




Remote Control Buttons

Remote Control

- 1 Power button**
Turns the PDP on and off.
- 2 Number buttons**
- 3 Information button**
Press to display information on the PDP screen.
- 4 Menu button**
Displays the main on-screen menu.
- 5 Still button**
Press to pause the current screen.
- 6 P.Mode button**
Adjust the PDP picture by selecting on of the preset factory settings (or select your personal, customized picture settings.)
- 7 Aspect button**
Press to change the screen size.
- 8 Mode button**
Selects a target device(Monitor only) to be controlled by the remote control.
- 9 Clock Display button**
Press to display clock on the PDP screen.
- 10 Mute button**
Press to mute the Monitor sound.
- 11 Joystick button**
Use to highlight on-screen menu items and change menu values.
This key is also used as a hot key to adjust Volume up/down, contrast and brightness.
- 12 Auto Adjustment button**
Adjusts PC screen automatically.
- 13 Zoom button**
This key operates only with PC.
- 14 Source selection buttons**
Press to directly select to Video, S-Video, DTV, DVD, PC.



Installing the Batteries in Your Remote Control

- 1** Slide the back cover to open the battery compartment of the remote control
- 2** Install two AAA size batteries. Make sure to match the "+" and "-" ends of the batteries with the diagram inside the compartment.
- 3** Slide the cover back into place.



Remote Control Operation Range.

You can use your remote control within a distance of 7~10m and an angle of 30 degrees from the left and right sides of the remote control receptor of the monitor.

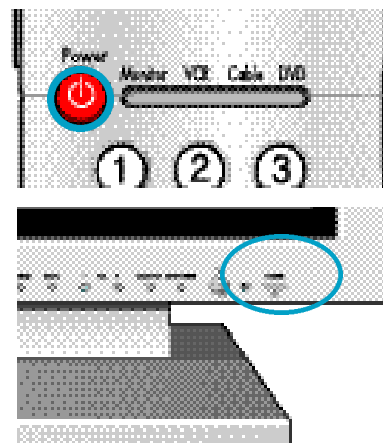


Turning the PDP On and Off

Turning the PDP On and Off

Press the POWER button on the remote control.
The PDP will turn on and you will be ready to use its features.

You can also use the Power button on the front of the PDP.

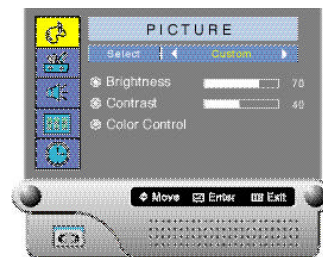


Viewing the Menus and Displays

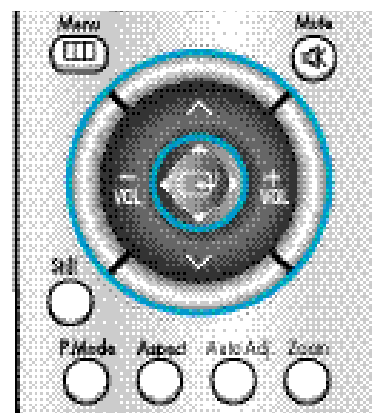
Your PDP has a simple, easy-to-use menu system that appears on the PDP screen. This system makes it convenient and fast to use features on the PDP. Your PDP also lets you display the status of many of your PDP's features.

Viewing the Menus

- 1 With the power on, press the MENU button on the remote control. The main menu appears on the screen.

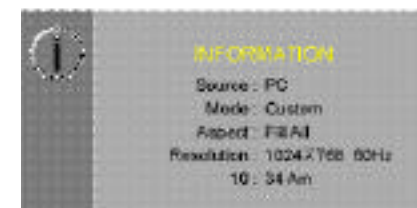


- 2 Use the joystick(up,down) button to the move items in the menu. Use the joystick(left, right) button to display, change, or use the selected items. Use the joystick (center) button to enter items in the menu. On screen menus disappear from the screen automatically after a few seconds, or you can press the MENU button on your remote control to exit the menu.

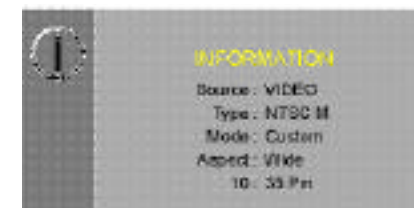


Displaying Status Information

Press the Information button on the remote control.
The PDP will display the Display Information and Time.



(PC/DTV)



(Video/S-Video/DVD)

Signal Auto Detection

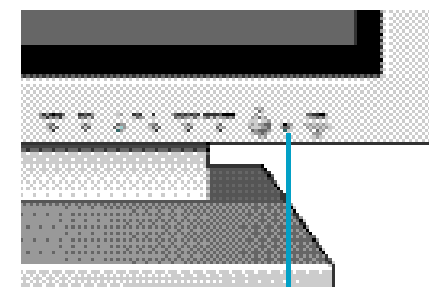
This PDP Monitor allows the signal to be tuned automatically, regardless of its type (PAL or NTSC).
If tuning doesn't work, then re-tune after changing to a different tuning mode (PC mode or Video mode).

Displaying Clock

Press the Clock Display button on the remote control.
The Current time will display on the screen.



Indication Lights



Status Indication Lamp

Status	Status Lamp
Standby Mode	RED
Power On	GREEN
On Timer in Standby Mode	YELLOW



Connection PC and Operation

Connecting PC and Operation

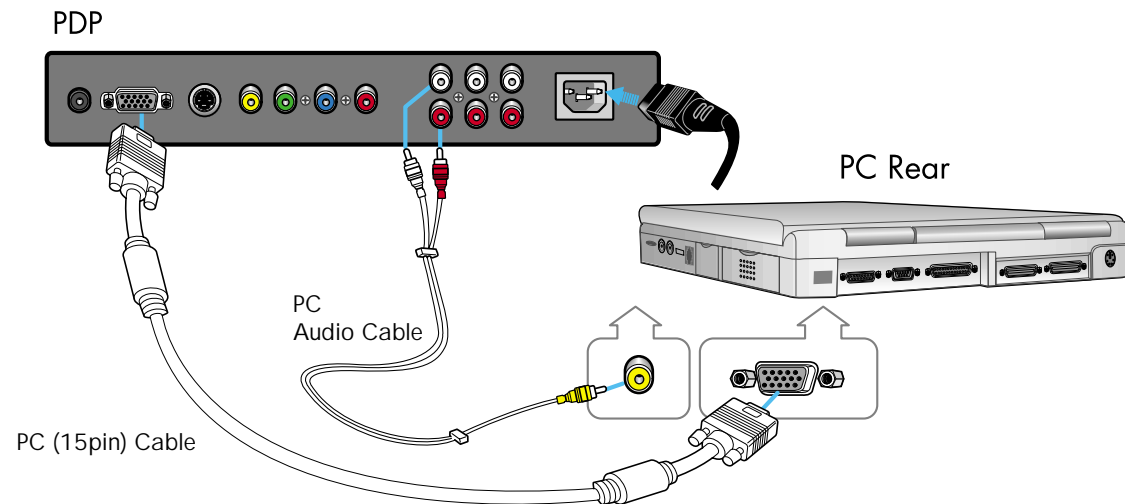


Connecting to a PC	18
Adjusting the PC Screen	22
Changing the Position of the Image	23
Picture Quality Adjustment	24
Changing the Aspect Ratio	27
Enlarge of the Image (Zoom).....	28
Move Expanded Picture (Pan)	29
Power Saver (PC mode only).....	30



Connecting to a PC

This PDP set is not compatible with Macintosh PC.



Connecting a PC to the PDP

Connect a PC (15pin) cable between the Video Output jack on the PC and the RGB in (15p D-SUB) on the PDP.

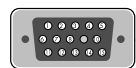
- For an explanation of Component video, see your PC owner's instruction.

To watch the PC screen:

1. Turn on PDP and press the PC button to select the PC mode.
2. Turn on PC and check for PC system requirements.
(Refer to pages 20 and 21 for PC system requirements.)
3. Adjust the PC screen. (Refer to page 22.)

Pin Configuration

- 15Pin Signal Cable (based on protruded pin)



Pin No.	PC IN	PC OUT
1	Red (R)	Red (R)
2	Green (G)	Green (G)
3	Blue (B)	Blue (B)
4	Grounding	Grounding
5	Grounding (DDC)	Grounding (DDC)
6	Red (R) Grounding	Red (R) Grounding
7	Green (G) Grounding	Green (G) Grounding
8	Blue (B) Grounding	Blue (B) Grounding
9	Reserved	Reserved
10	Sync Grounding	Sync Grounding
11	Grounding	Grounding
12	Data (DDC)	Data (DDC)
13	Horizontal sync.	Horizontal sync.
14	Vertical sync.	Vertical sync.
15	Clock (DDC)	Clock (DDC)

Setting up Your Monitor Plug and Play

Our adoption of the new VESA® Plug and Play solution eliminates complicated and time consuming setup. It allows you to install your monitor in a Plug and Play compatible system without the usual hassles and confusion. Your PC system can easily identify and configure itself for use with your display. This monitor automatically tells the PC system its Extended Display Identification Data(EDID) using Display Data Channel (DDC) protocols so the PC system can automatically configure itself to use the flat panel display. If your PC system needs a video driver, following the instructions given below according to the operating system your computer uses.

Installing the Video Driver

When prompted by the operating system for the monitor driver, insert the Driver diskette included with this monitor. Driver installation is slightly different from one operating system to another. Follow the directions as appropriate for the operating system you have.

Windows® 98, Windows® Me and Windows® 2000

1. Windows_ 98, Windows_ Me and Windows_ 2000 will auto-detect your new monitor and start the "Add New Hardware Wizard" if the drivers are not already installed. Click the NEXT button to search for drivers.
 2. Check the diskette drive box to install the drivers off the diskette provided with your monitor and click NEXT.
 3. Confirm that Windows found the driver on the diskette and click NEXT again to install the driver.
- To manually install or update the driver, follow the directions below:
1. Click on START, SETTINGS, CONTROL PANEL, DISPLAY SETTINGS tab, ADVANCED, MONITOR tab, CHANGE, This will start the "Add New Hardware Wizard".
 2. Follow the same directions as given in the steps in the section above.

Version 4.00.950A

1. Click on START, SETTINGS, CONTROL PANEL, DISPLAY SETTINGS tab, CHANGE DISPLAY TYPE, CHANGE, HAVE DISK.
2. Type the diskette drive letter in the box and click OK.

Version 4.00.950B

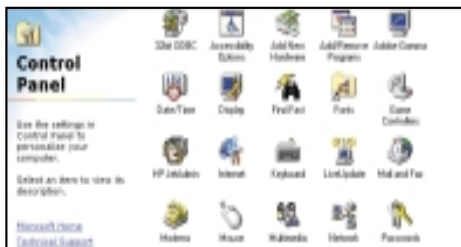
1. Click on START, SETTINGS, CONTROL PANEL, DISPLAY, ADVANCED PROPERTIES, MONITOR tab, HAVE DISK.
2. Type the diskette letter in the box and click OK

How to Set up Your PC Software (Windows only)

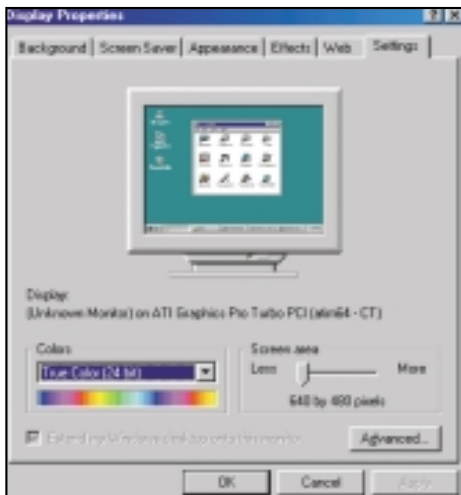
The Windows display-settings for a typical computer are shown below. But the actual screens on your PC will probably be different, depending upon your particular version of Windows and your particular video card. But even if your actual screens look different, the same, basic set-up information will apply in almost all cases. (If not, contact your computer manufacturer.)



On the windows screen, select in the following sequence : Start → Settings → Control Panel.



When the control panel screen appears, click on "Display" and a display dialog-box will appear.



Select the "Settings" tab in the display dialog-box.

The two key variables that apply the PDP-PC interface are "resolution" and "colors." The correct settings for these two variables are:

- Size (sometimes called "resolution"):
640 x 480 pixels.
- Color: "24-bit" color (might also be expressed as "16 million colors") Shown at left is a typical screen for "Display" dialog box.

If a vertical-frequency option exists on your display settings dialog box, the correct value is "60" or "60 Hz." Otherwise, just click "OK" and exit the dialog box.

Continued...

Notes:

Both screen position and size will vary, depending on the type of PC monitor and its resolution. The table below shows all of the display modes that are supported:

Video signal	Dot X Line	Vertical Frequency (Hz)	Horizontal Frequency (Hz)	Vertical polarity	Horizontal polarity
IBM PC / AT Compatibler	640 X 350	70.086	31.469	N	P
		85.080	37.861	N	P
	640 X 400	85.080	37.861	P	N
		70.087	31.469	P	N
	640 X 480	85.039	37.927	P	N
		59.940	31.469	N	N
		70.000	35.000	N	N
		72.809	37.861	N	N
		75.000	37.500	N	N
		85.008	43.269	N	N
	800 X 600	56.250	35.156	N/P	N/P
		60.317	37.879	P	P
		72.188	48.077	P	P
		75.000	46.875	P	P
	1024 X 768	85.061	53.674	P	P
		60.004	48.363	N	N
		70.069	56.476	N	N
		75.029	60.023	P	P
		84.997	68.677	P	P

- The interlace mode is not supported.
- The PDP operates abnormally if a non-standard video format is selected.

Notes:

- When this PDP is used as a PC display, 24-bit color is supported (over 16 million colors).
- Your PC display screen might appear different. Depending on the manufacturer (and depending on your particular version of Windows). Check your PC instruction book for information about connecting your PC to a PDP.
- If a vertical and horizontal frequency-select mode exists, select 60Hz (vertical) and 31.5kHz (horizontal).
- In some cases, abnormal signals (such as stripes) might appear on the screen when the PC power is turned off (or if the PC is disconnected). If so, press the Source button to enter the VIDEO mode. Also, make sure that the PC is connected.
- Connect only a PC monitor to the monitor output port while viewing the PC screen. (Otherwise, random signals might appear).



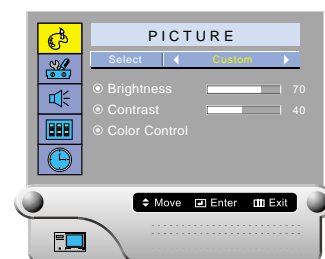
Adjusting the PC Screen

Adjusting the R.G.B

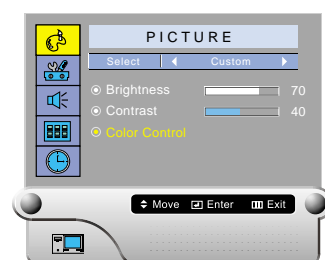
Preset:

- Press the PC button to select the PC mode.

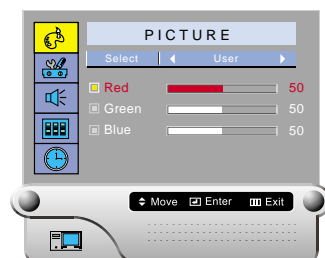
- Press the **Menu** button, then press the **Joystick** to enter the sub-menu. Move the joystick left or right to select "Custom". You will see the items "Brightness", "Contrast" and "Color Control".



- Move the joystick up or down to select the "Color Control", then press the joystick to enter.



- Move the joystick left or right to select the "User", then move the joystick up or down to select the item you want to change.



- Move the joystick left or right to increase or decrease the value of a particular item.



- Press the **Menu** button to exit.



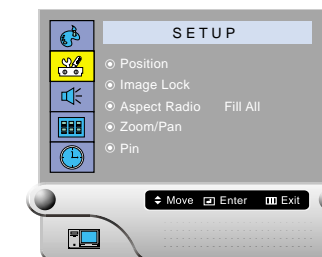
Changing the Position of the Image

After connecting the PDP to your PC, adjust the position of screen if it is not well-aligned.

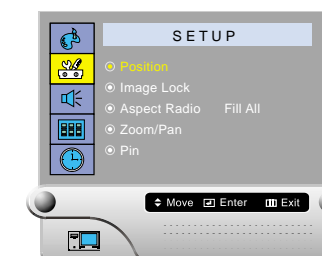
Preset:

- Press the PC button to select the PC mode.

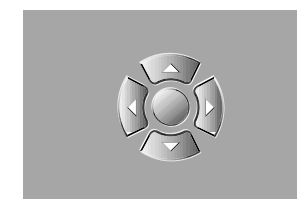
- Press the **Menu** button. Move the joystick up or down to select the "SETUP", then press the joystick to enter the sub-menu.



- Press the joystick to enter the "Position" mode, then adjust the position of screen by using the joystick button.



- Press the **Menu** button to exit.





Picture Quality Adjustment

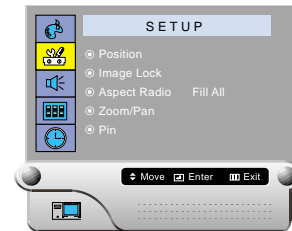
Picture Automatic Adjustment

Preset:

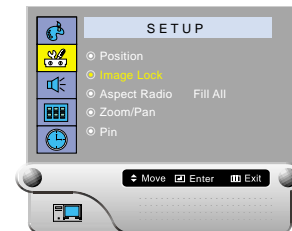
- Press the PC button to select the PC mode.

- 1 Press the **Menu** button. Move the joystick up or down to select the "SETUP", then press the joystick to enter the sub-menu.

Quick way to access the Auto Adjustment : Just press "Auto Adjust." on the remote control.



- 2 Move the joystick up or down to select the "Image Lock", then press the joystick to enter the sub-menu.



- 3 Move the joystick up or down to select "Auto Adjustment", then press the joystick to adjust the PC stable. This is recommended to perform for new PC mode.



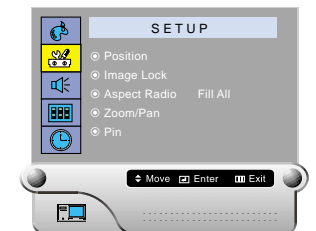
- 4 Press the **Menu** button to exit.

Horizontal Size Adjustment (Pixel Frequency Adjustment)

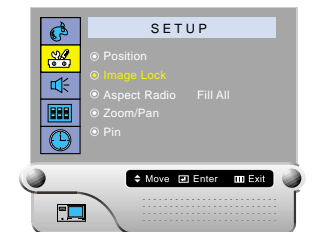
Preset:

- Press the PC button to select the PC mode.

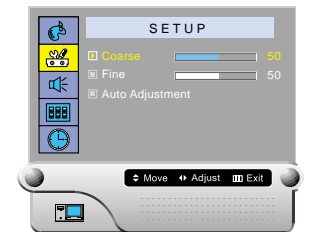
- 1 Press the **Menu** button. Move the joystick up or down to select the "SETUP", then press the joystick to enter the sub-menu.



- 2 Move the joystick up or down to select the "Image Lock", then press the joystick to enter the sub-menu.



- 3 Move the joystick up or down to select "Coarse", then move the joystick left or right to remove picture noise (vertical stripes) on the screen. (If frequency is not set properly, the vertical stripes will appear on the screen.)



- 4 Press the **Menu** button to exit.

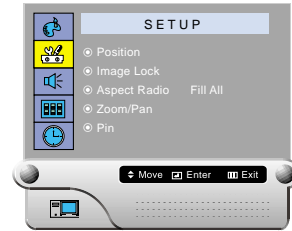


Fine Tuning (Phase)

Preset:

- Press the PC button to select the PC mode.

1 Press the **Menu** button. Move the joystick up or down to select the "SETUP", then press the joystick to enter the sub-menu.



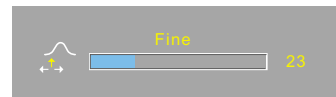
2 Move the joystick up or down to select the "Image Lock", then press the joystick to enter the sub-menu.



3 Move the joystick up or down to select "Fine", then move the joystick left or right to remove picture noise (vertical stripes) on the screen. (If phase is not set properly, the picture may be blurry.)



4 Press the **Menu** button to exit.

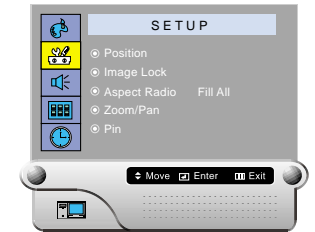


Changing the Aspect Ratio

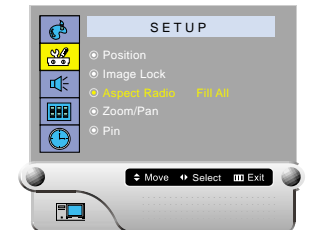
Preset:

- Press the PC button to select the PC mode.

1 Press the **Menu** button. Move the joystick up or down to select the "SETUP", then press the joystick to enter the sub-menu.



2 Move the joystick up or down to select the "Aspect Ratio", then move the joystick left or right to select the "Fill All" or "Normal".



3 Press the **Menu** button to exit.



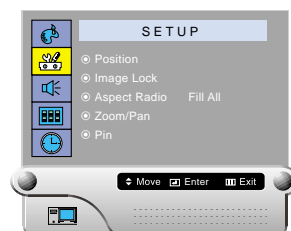
Enlarge of the Image (Zoom)

Preset:

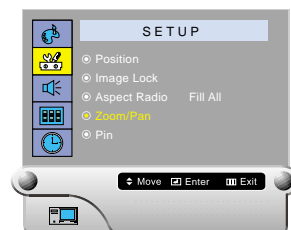
- Press the PC button to select the PC mode.

1 Press the **Menu** button. Move the joystick up or down to select the "SETUP", then press the joystick to enter the sub-menu.

Quick way to access the zoom:
Just press "zoom" on the remote control.

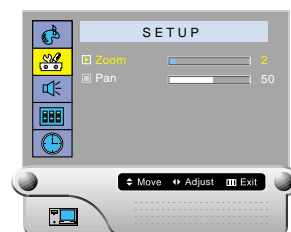


2 Move the joystick up or down to select the "Zoom/Pan", then press the joystick button to enter the sub-menu.

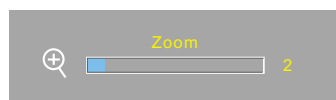


3 Move the joystick left or right to enlarge the image.

- The picture can be enlarged level 2 to level10 in Zoom mode.



4 Press the **Menu** button to exit.

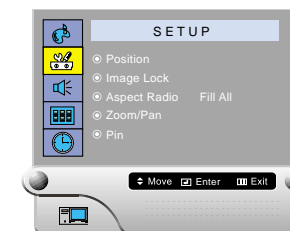


Move Expanded Picture(Pan)

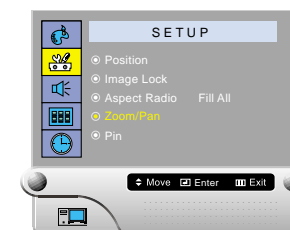
Preset:

- Press the PC button to select the PC mode.

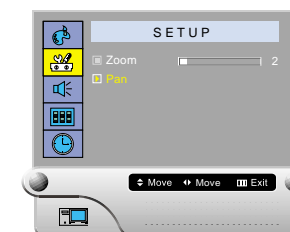
1 Press the **Menu** button. Move the joystick up or down to select the "SETUP", then press the joystick to enter the sub-menu.



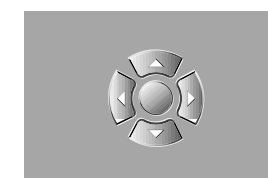
2 Move the joystick up or down to select the "Zoom/Pan", then press the joystick to enter the sub-menu .



3 Move the joystick up or down to select the "Pan", then Move the joystick left or right to expanded the image.
The PAN feature operates only when the picture is expanded more than level 2.



4 Press the **Menu** button to exit.





Power Saver (PC mode only)

This monitor has a built-in power management system called Power Saver. This power management system saves energy by switching your monitor into a low-power mode when it has not been used for a certain amount of time. This power management system operates with a VESA DPMS compliant video card installed in your computer. You use a software utility installed on your computer to set up this feature. See the table below for details.

Table 1. Power-saving modes

State	Normal Operation	Power-saving Function Mode		
		Standby Mode	Suspend Mode Position A1	Power-off Mode Position A2
Horizontal Sync	Active	Inactive	Active	Inactive
Vertical Sync	Active	Active	Inactive	Inactive
Video	Active	Blanked	Blanked	Blanked
Power Indicator	Green	Amber Blinking (0.5 sec Interval)	Amber Blinking (0.5 sec Interval)	Amber Blinking (0.5 sec Interval)

Notes:

- This monitor automatically returns to normal operation when horizontal and vertical sync return.
- This occurs when move the computer's mouse or press a key on the keyboard.
- For energy conservation, turn your monitor OFF when it is not needed, or when leaving it unattended for long periods.



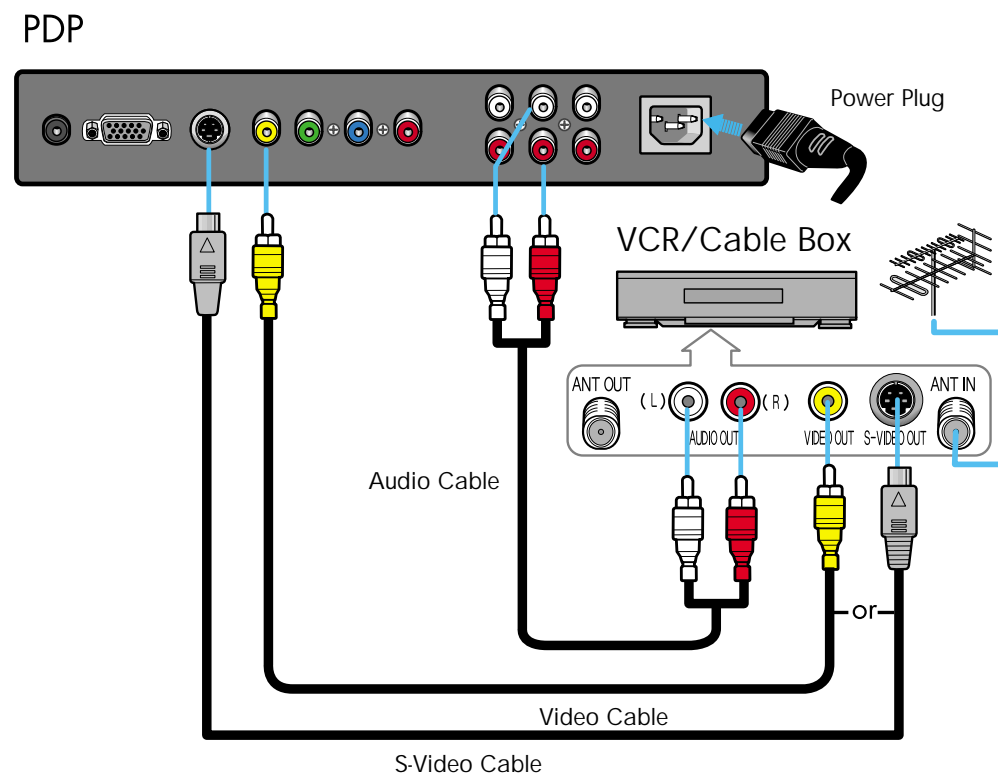
Connection(Connecting Receiver)



Connecting a VCR/Cable Box	32
Connecting a DTV Set-Top-Box/DVD	33



Connecting a VCR/Cable Box



Connecting a Video or S-Video jack/Audio Jack

Connect an Video/S-Video cable between the Video/S-Video Output jack on the VCR/Cable box and the Video Input jack on the PDP.

- Connect an Audio cable.

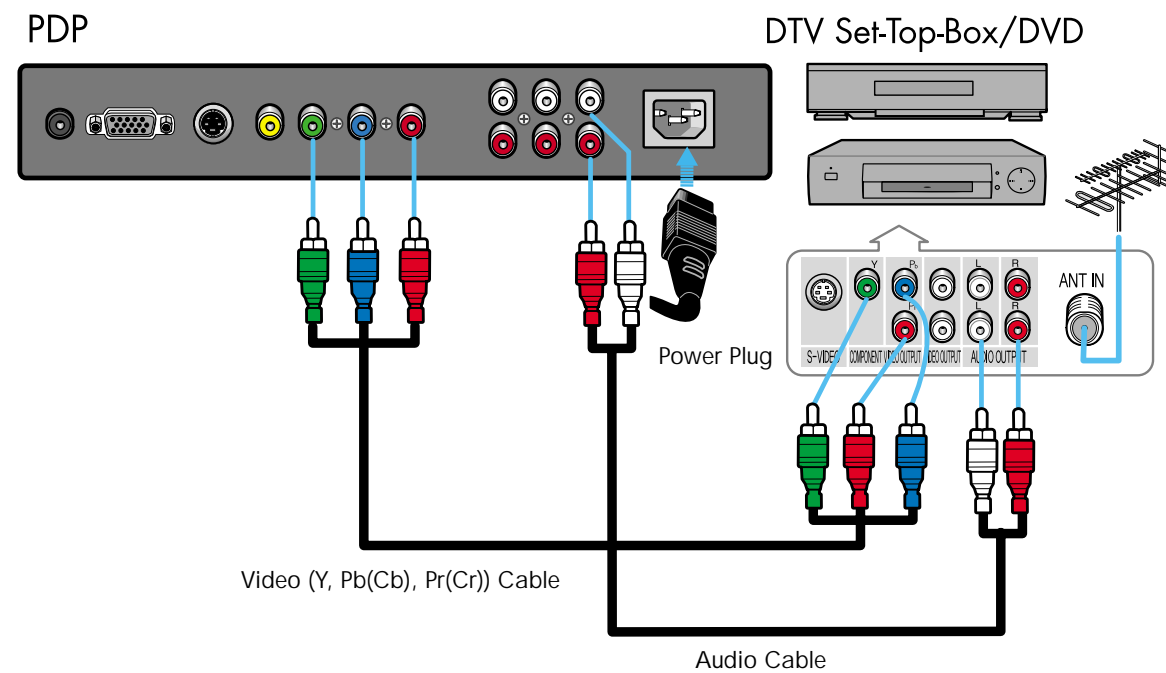
Videotape Playback:

1. Turn on your VCR, insert a videotape and press the Play button on the VCR remote control.
2. Turn on PDP and press the Video or S-Video(if S-Video jack is connected.) button to select the VIDEO or S-VIDEO mode.

* When the Mode is selected in no signal, the Warning Message is displayed.



Connecting a DTV Set-Top-Box/DVD



Connecting a Video jack/Audio Jack

Connect a Video cable between the DTV Set-Top Box/DVD (Y,Pb,Cb),Pr(Cr)) Output jacks on the DVD/DTV Set-Top Box and the Video Component (Y,Pb,Cb),Pr(Cr)) Input jack on the PDP.

- Note: That it is essential to match the color-coded connectors with a compatible DVD or DTV STB.

To Play DVD:

1. Turn on your DVD, insert a disc and press the Play button on the DVD remote control.
2. Turn on PDP and press the DVD button to select the DVD mode.

To Watch DTV:

1. Turn on your DTV receiver.
2. Turn on PDP and press the DTV button to select the DTV mode.

* When the Mode is selected in no signal, the Warning Message is displayed.



Picture Control

Picture Control



Using Automatic picture setting	36
Customizing the Picture	37
Changing the Screen Size	38
Freezing the picture	39
Auto Pixel Shift	39

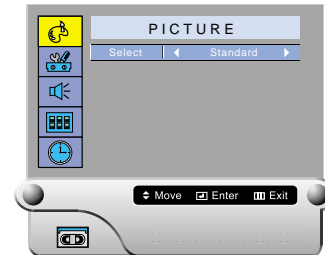


Using Automatic Picture Settings

Your PDP has automatic picture settings that allow you to adjust the video display easily.

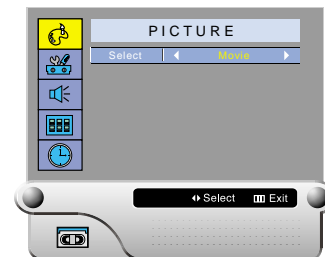
- 1 Press the **Menu** button, then press the joystick to enter.

Quick way to access the picture setting: Just press "P.Mode" on the remote control.



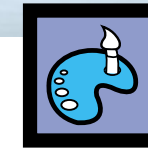
- 2 Move the joystick left or right to select the "Custom", "Standard", "Dynamic", "Movie" or "Mild" picture setting.

Note: The picture setting is available for video, S-Video, DVD and DTV.



- 3 Press the **Menu** button to exit.

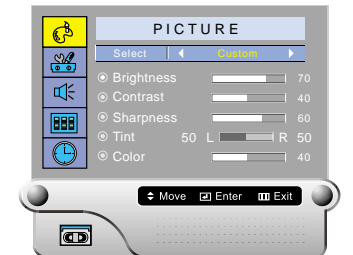
Note: The Automatic picture settings feature doesn't operate in the PC mode. You will see four items in PC mode in the following sequence: Low → Middle → High → Custom.



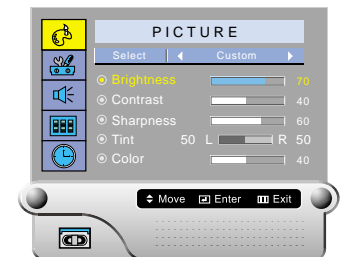
Customizing the Picture

- 1 Press the **Menu** button, then press the joystick to select the "PICTURE". Move the joystick left or right to select "Custom". You will see the items "Brightness", "Contrast", "Sharpness", "Tint" and "Color".

Quick way to access the Brightness and Contrast: Move the joystick up or down to access.



- 2 Move the joystick up or down to select the item you want to change.



- 3 Move the joystick left or right to increase or decrease the value of the item.



- 4 Press the **Menu** button to exit.

Note:

1. Only R, G, B Color control appear in PC mode.
2. In case of the PAL or SECAM system, the tint feature doesn't operate in video mode.



Changing the Screen Size

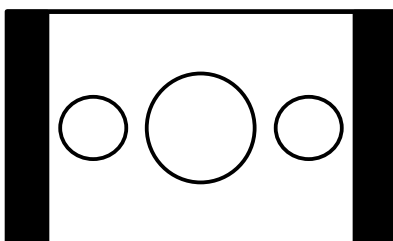
When you press the Aspect button on the remote control, the PDP's screen mode choices appear in sequence. The screen displays in this order: Normal, Wide, Panorama, Zoom1, Zoom2, Stretch.

Note

- If you watch a still image or the normal mode for a long time, image may be burned onto the screen, view the monitor in wide mode or panorama mode as possible.

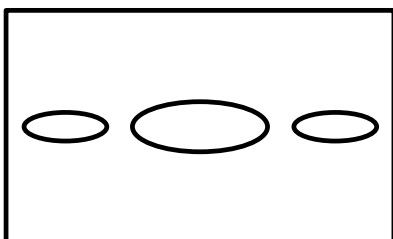
Normal(4:3)

Sets the picture to normal mode. This is a standard PDP screen size.



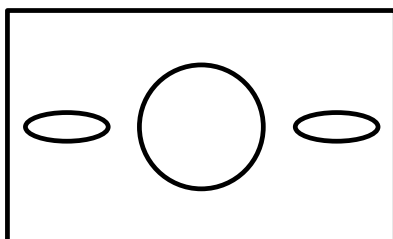
Wide

Sets the picture to 16:9 wide mode.



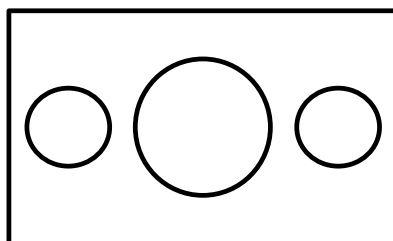
Panorama

Use this mode for the wide aspect ratio of a panoramic picture.



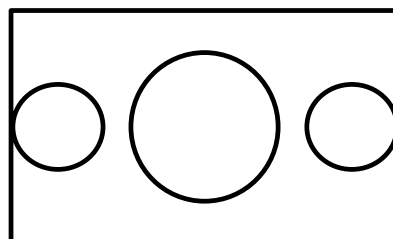
Zoom1

Magnify the size of the picture vertically on screen.



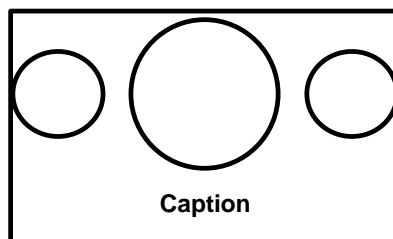
Zoom2

Magnify the size of the picture more than Zoom1.



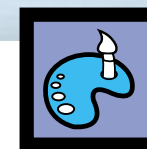
Stretch

Moves the Zoom2 picture up a little to fully show the bottom. Use this picture size. If you want to view Zoom2 picture along with captions when watching movies.



Note:

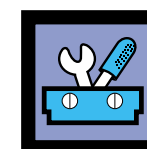
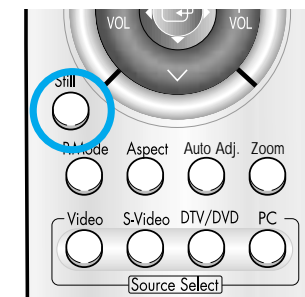
- In VIDEO, S-VIDEO, DVD mode, all screen modes can be selected. (Normal Wide Panorama Zoom1 Zoom2 Stretch Normal...)
- In DTV mode (Wide Zoom1 Zoom2 Wide...)
- In PC mode (Fill All Normal Fill All...)
- You can use the Aspect button on the remote control to change the aspect ratio.



Freezing the Picture

Still

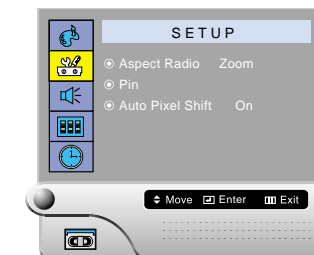
Press the Still button on the remote control to freeze a moving picture into a still one. Press again to cancel.



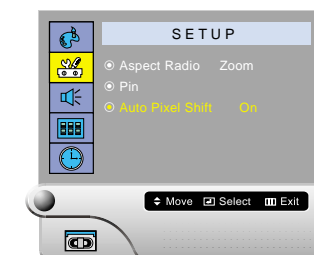
Auto Pixel Shift

To prevent image retention, the screen automatically moves by one pixel.

- Press the Menu button. Move the joystick up or down to select "SETUP", then press the joystick to enter.



- Move the joystick up or down to select "Auto Pixel Shift". Move the joystick left or right to select "On".



- Press the Menu button to exit.

Note:

- Auto pixel shift doesn't operate in the PC mode.