

# PDP TV Monitor

User's Manual

P42SX



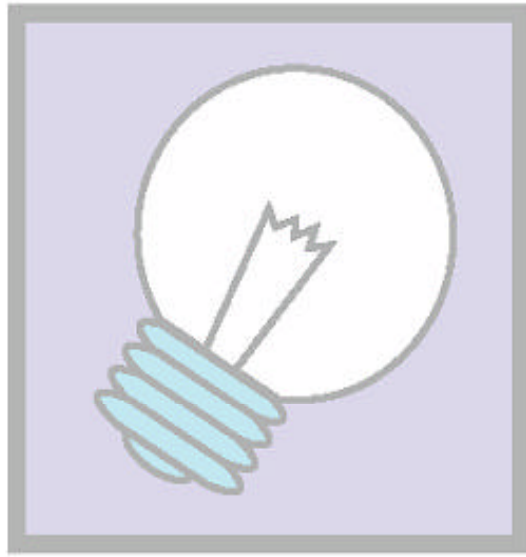
Class B device

NOTE: This equipment has been tested and found to comply with the limits for a Class B digital device, pursuant to part 15 of the FCC Rules. These limits are designed to provide reasonable protection against harmful interference in a residential installation.

This equipment generates, uses and can radiate radio frequency energy and, if not installed and used in accordance with the instructions, may cause harmful interference to radio communications. However, there is no guarantee that interference will not occur in a particular installation. If this equipment does cause harmful interference to radio or television reception, which can be determined by turning the equipment off and on, the user is encouraged to try to correct the interference by one or more of the following measures:

- Reorient or relocate the receiving antenna.
- Increase the separation between the equipment and receiver.
- Connect the equipment into an outlet on a circuit different from that to which the receiver is connected.
- Consult the dealer or an experienced radio/TV technician for help.

CAUTION : Changes or modifications not expressly approved by the manufacturer responsible for compliance could void the user's authority to operate the equipment.



# Table of Contents

|                                  |       |    |
|----------------------------------|-------|----|
| Warning! Safety Instructions     | ..... | 1  |
| User Instructions                | ..... | 4  |
| Panel Specificity                | ..... | 5  |
| PDP TV Monitor                   | ..... | 6  |
| Turning the PDP On and Off       | ..... | 8  |
| Connecting to a PC               | ..... | 9  |
| Connecting a VCR/Cable Box       | ..... | 10 |
| Connecting a DTV Set-Top-Box/DVD | ..... | 11 |
| Powr Saver(PC mode only)         | ..... | 12 |
| Setting up Monitor Plug and Play | ..... | 13 |
| How to Set up PC Software        | ..... | 14 |
| Display Modes                    | ..... | 15 |
| Specification                    | ..... | 16 |

# Warning Important Safety Instructions



## Warning! Important Safety Instructions

### CAUTION

RISK OF ELECTRIC SHOCK  
DO NOT OPEN

**CAUTION : TO REDUCE THE RISK OF ELECTRIC SHOCK, DO NOT REMOVE COVER (OR BACK).  
NO USER SERVICEABLE PARTS INSIDE. REFER SERVICING TO QUALIFIED SERVICE  
PERSONNEL.**



This symbol indicates high voltage is present inside. It is dangerous to make any kind of contact with any inside part of this product.



This symbol alerts you that important literature concerning operation and maintenance has been included with this product.

**Note to CATV system installer :** This reminder is provided to call CATV system installer's attention to Article 820-40 of the National Electrical Code (Section 54 of Canadian Electrical Code, Part I), that provides guidelines for proper grounding and, in particular, specifies that the cable ground shall be connected to the grounding system of the building as close to the point of cable entry as practical.

**Caution :** FCC/CSA regulations state that any unauthorized changes or modifications to this equipment may void the user's authority to operate it.

**Caution :** To prevent electric shock, match the wide blade of plug to the wide slot, and fully insert the plug.

**Caution :** Danger of explosion if battery is incorrectly replaced.

**Replace only with the same or equivalent type  
recommended by the manufacturer.  
Dispose of used batteries according  
to the manufacture's instructions.**

**Attention :** Pour éviter les chocs électriques, introduire la lame la plus large de la fiche dans la borne correspondante de la prise et pousser jusqu'au fond.

**Important:** One Federal Court has held that unauthorized recording of copyrighted PDP Monitor programs is an infringement of U.S. copyright laws. Certain Canadian programs may also be copyrighted and any unauthorized recording in whole or in part may be in violation of these rights.

**To prevent damage which may result in fire or electric shock hazard, do not expose this appliance to rain or moisture.**

# Important Safety Information

## Important Safety Information

**Always be careful when using your PDP Monitor. To reduce the risk of fire, electrical shock, and other injuries, keep these safety precautions in mind when installing, using and maintaining your machine.**

- Read all safety and operating instructions before operating your PDP Monitor.
- Keep the safety and operating instructions for future reference.
- Heed all warnings on the PDP Monitor and in the operating instructions.
- Follow all operating and use instructions.
- Unplug the PDP Monitor from the wall outlet before cleaning. Use a damp cloth; do not use liquid or aerosol cleaners.
- Never add any attachments and/or equipment without approval of the manufacturer. Such additions can increase the risk of fire, electric shock, or other personal injury.
- Do not use the PDP Monitor where contact with or immersion in water is a possibility, such as near bath tubs, sinks, washing machines, swimming pools, etc.
- Do not use the PDP Monitor where contact with or immersion in water is a possibility, such as near bath tubs, sinks, washing machines, swimming pools, etc.
- Do not place the PDP Monitor on an unstable cart, stand, tripod, floor, bracket, or table where it can fall. A falling PDP Monitor can cause serious injury to a child or adult, and serious damage to the appliance. Use only with a cart, stand, tripod, bracket, or table recommended by the manufacturer or sold with the PDP Monitor. Follow the manufacturer's instructions when mounting the unit, and use a mounting accessory recommended by the manufacturer. Move the PDP Monitor and cart with care. Quick stops, excessive force, and uneven surfaces can make the unit and cart unsteady and likely to overturn.
- Provide ventilation for the PDP Monitor. The unit is designed with slots in the cabinet for ventilation to protect it from overheating. Do not block these openings with any object, and do not place the PDP Monitor on a bed, sofa, rug, or other similar surface. Do not place it near a radiator or heat register. If you place the PDP Monitor on a rack or bookcase, ensure that there is adequate ventilation and that you've followed the manufacturer's instructions for mounting.
- Operate your PDP Monitor only from the type of power source indicated on the marking label. If you are not sure of the type of power supplied to your home, consult your appliance dealer or local power company.
- Use only a grounded or polarized outlet. For your safety, this PDP Monitor is equipped with a polarized alternating current line plug having one blade wider than the other. This plug will fit into the power outlet only one way. If you are unable to insert the plug fully into the outlet, try reversing the plug. If the plug still does not fit, contact your electrician to replace your outlet.
- On setup, please place the PDP Monitor on the table which has at least above 20cm height.





# Important Safety Information

- Protect the power cord. Power supply cords should be routed so that they won't be walked on or pinched by objects placed on or against them. Pay particular attention to cords at plugs, convenience receptacles and the point where they exit from the unit.
- Unplug the PDP Monitor from the wall outlet and disconnect the antenna or cable system during a lightning storm or when left unattended and unused for long periods of time. This will prevent damage to the unit due to lightning and power-line surges.
- Avoid overhead power lines. An outside antenna system should not be placed in the vicinity of overhead power lines or other electric light or power circuits or where it can fall into such power lines or circuits. When installing an outside antenna system, be extremely careful to keep from touching the power lines or circuits. Contact with such lines can be fatal.
- Do not overload the wall outlet or extension cords. Overloading can result in fire or electric shock.
- Do not insert anything through the openings in the unit, where they can touch dangerous voltage points or damage parts. Never spill liquid of any kind on the PDP Monitor.
- Ground outdoor antennas. If an outside antenna or cable system is connected to the TV system with PDP Monitor, be sure the antenna or cable system is grounded so as to provide some protection against voltage surges and built-up static charges. Section 810 of the National Electrical Code, ANSI/NFPA No.70-1984, provides information about proper grounding of the mast and supporting structure, grounding of the lead-in wire to an antenna discharge unit, size of grounding conductors, location of antenna discharge unit, connection to grounding electrodes, and requirements for the grounding electrode.
- Do not attempt to service the PDP Monitor yourself. Refer all servicing to qualified service personnel. Unplug the unit from the wall outlet and refer servicing to qualified service personnel under the following conditions:
  - when the power-supply cord or plug is damaged
  - if liquid has been spilled on the unit or if objects have fallen into the unit
  - if the PDP Monitor has been exposed to rain or water
  - if the PDP Monitor does not operate normally by following the operating instructions
  - if the PDP Monitor has been dropped or the cabinet has been damaged
  - when the PDP Monitor exhibits a distinct change in performance
- If you make adjustments yourself, adjust only those controls that are covered by the operating instructions. Adjusting other controls may result in damage and will often require extensive work by a qualified technician to restore the PDP Monitor to normal.
- When replacement parts are required, be sure the service technician uses replacement parts specified by the manufacturer or those that have the same characteristics as the original part. Unauthorized substitutions may result in additional damage to the unit.
- Upon completion of any service or repairs to this PDP Monitor, ask the service technician to perform safety checks to determine that the PDP Monitor is in a safe operating condition.

**This device complies with part 15 of the FCC Rules. Operation is subject to the following two conditions:**

- (1) This device may not cause harmful interference, and
- (2) this device must accept any interference received, including interference that may cause undesired operation.

# User Instructions

## ※ Notice for User

Like other display product using fluorescent substance and plasma display using gaseous discharge, under certain condition, this product may cause burn-in of fluorescent substance. Certain condition means the case that fixed image is embodied in screen for a long time and burn-in of fluorescent substance can happen without proper precaution.

- ▶ To minimize burn-in of product, following recommendations and precautions are required.
  - 1) Establish screen saver function of computer, when you connect this product to computer.
  - 2) Indicate movable image to screen, if possible.
  - 3) Shut off the power when finishing the use of monitor.
- ▶ Please minimize the possibility of burn-in of fluorescent substance through following measures when using monitor continuously or for a long time.
  - 1) Minimize brightness and contrast within the range to read image.
  - 2) Indicate image containing various tone of color and change of color.
  - 3) Minimize the gap between bright part and dark part in image. For example, avoid white letter but use complementary color or pastel color in black background.
  - 4) Avoid the indication of image that its color is monotonous and outline between colors is distinct
  - 5) Burn-in (or Image Sticking) is not included in guarantee.

# Panel Specificity

## Screen Image retention

Do not display a still image (such as on a video game or when hooking up a PC to this Monitor) on the plasma monitor panel for more than 2 hours as it can cause screen image retention. This image retention is also known as "Screen burn". To avoid such image retention, refer to page 37, 39 of this manual to reduce the degree of brightness and contrast of this screen when displaying a still image.

## Cell Defects

The Plasma monitor displays images using a group of minute pixels. Therefore, if 99.9% of the pixels indicate normal conditions, the monitor is acceptable and approved. You don't need to be concerned about the light emitted from part of the pixels or any pixels that are kept lit as your panel has been approved.

## Warranty

Warranty Period: One year starting from the purchase of your main system.  
Warranty does not cover any damage caused by image retention.



# PDP TV Monitor

Front



## Explanation of Functions

### SOURCE

Press the display of the available video sources in sequence

### MENU

Displays the Main On-Screen Menu

- VOLUME +

Press to lower or raise the Volume and to enter the sub-menu in the menu window

### CHANNEL

Use to up or down on Menu and change the channel

### ENTER

Use to select the Menu

### POWER

Use to turn the PDP on and off

## Checking Parts



Remote controls Batteries(AAA)



PC Cable(15p D-sub)



Power Cord User's Manual



AV(RCA) Cable



S-Video Cable

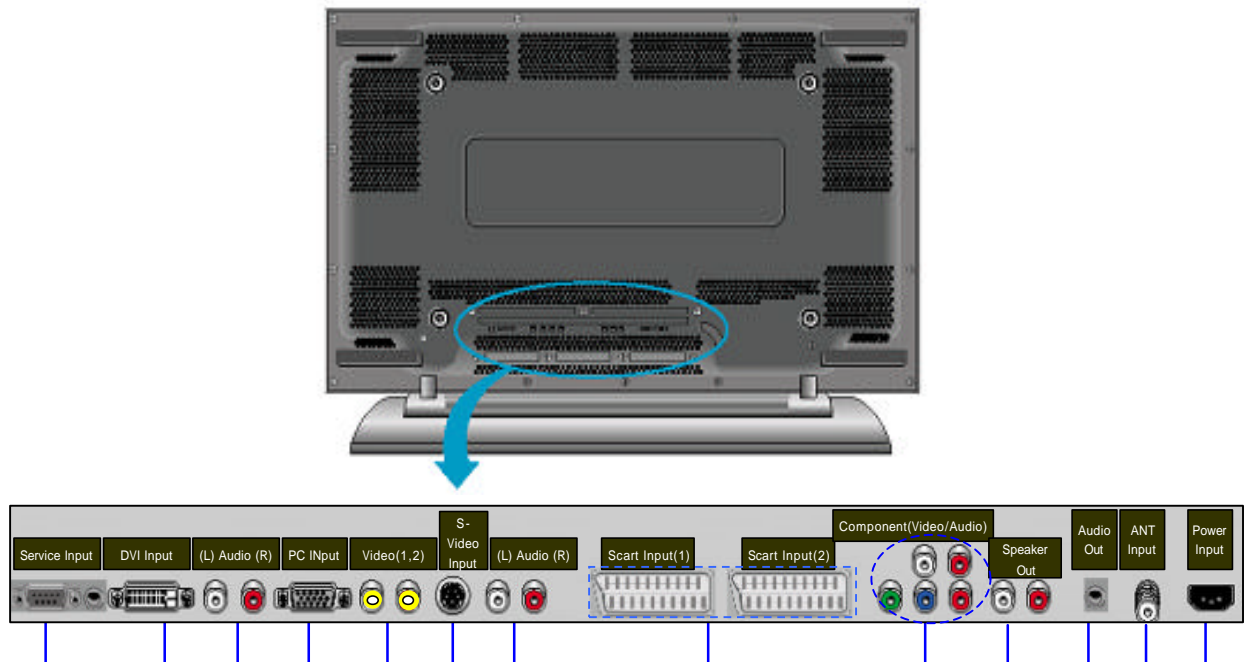


ANT Cable



# PDP TV Monitor

Rear



Service Input jack

Connect the input jack on RS-232C to your PC and another PC

DVI Input jack

It's input terminal to connect for DTV Receiver or PC with DVI output

, Audio Input jack

DVI/PC Audio: , Video(1,2)/S-Video Audio:

PC Input jack

Connect to the Video output jack on your PC

Video Input jack(1,2)

Connect a video signal from external sources like VCRs or DVD players

S-Video Input jack

Connect a S-Video signal from S-VHS VCRs or DVD players

Scart Input jack

Connect a Scart jack from VCRs or DVD players with Scart output

Component Input (480i/480p/720p/1080i) jack (Y,Pb(Cb),Pr(Cr))

Connect a Component-Video Signal from DVD player or DTV receiver

Speaker Out(L,R)

Connect to the external speaker

Audio Out(L,R)

Connect to the external Audio

Antenna Input jack

Connect the Antenna cable

Power Input

Connect the included power cord