

# Turning the PDP On and Off

## Turning the PDP On and Off

Press the **POWER** button on the remote control.  
The PDP will turn on and you will be ready to use its features.




## Viewing the Menus and Displays

Your PDP has a simple, easy-to-use menu system that appears on the PDP screen.  
This system makes it convenient and fast to use features on the PDP.  
Your PDP also lets you display the status of many of your PDP's features.

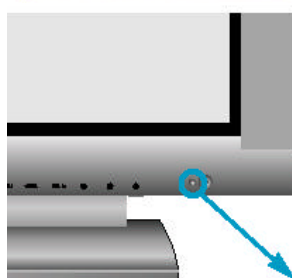
### Viewing the Menus

- 1 With the power on, press the **MENU** button on the remote control.  
The main menu appears on the screen.

- 2 Use the joystick(up,down) button to move items in the menu.  
Use the joystick(left, right) button to display, change, or use the selected items.  
Use the joystick (  ) button to enter items in the menu.  
On screen menus disappear from the screen automatically after a few seconds, or you can press the **MENU** button on your remote control to exit the menu.



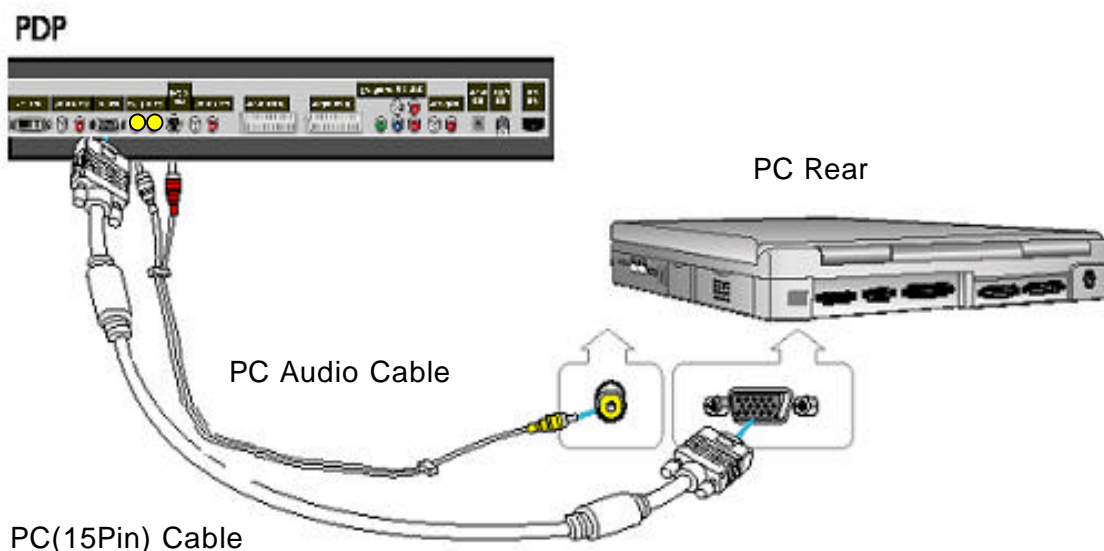
## Indication Lights



(Status Indication Lamp)

Status	Status Lamp
Standby Mode	RED
Power On	GREEN
On Timer in Standby Mode	Amber

# Connecting a PC to the PDP



## Connecting a PC to the PDP

Connect a PC (15pin) cable between the Video Output jack on the PC and the RGB in (15p D-SUB) on the PDP.

- For an explanation of Component video, see your PC owner's instruction.

To watch the PC screen:

1. Turn on PDP and press the PC button to select the PC mode.
2. Turn on PC and check for PC system requirements.  
(Refer to pages 20 and 21 for PC system requirements.)
3. Adjust the PC screen. (Refer to page 22.)

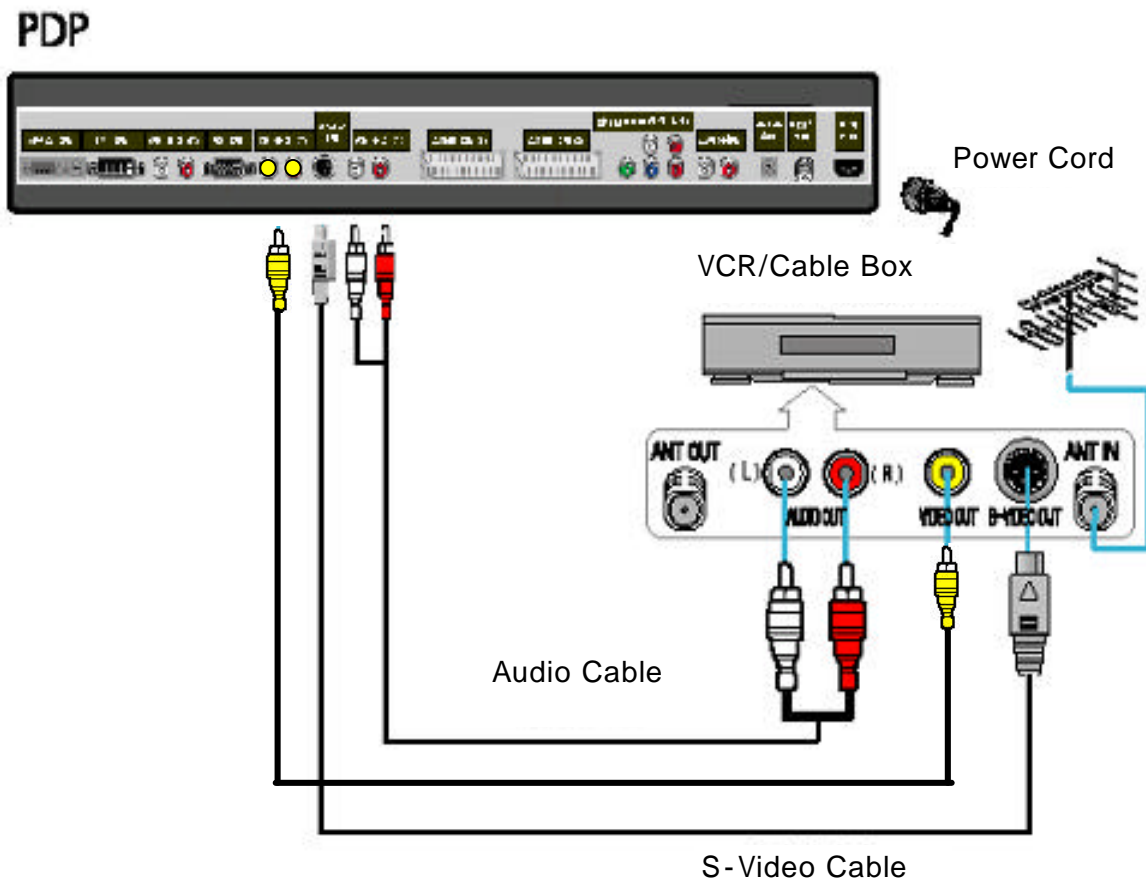
## Pin Configuration

- 15Pin Signal Cable (based on protruded pin)



PinNO.	PC IN	PC OUT
1	Red (R)	Red (R)
2	Green (G)	Green (G)
3	Blue (B)	Blue (B)
4	Grounding	Grounding
5	Grounding (DDC)	Grounding (DDC)
6	Red (R) Grounding	Red (R) Grounding
7	Green (G) Grounding	Green (G) Grounding
8	Blue (B) Grounding	Blue (B) Grounding
9	Reserved	Reserved
10	Sync. Grounding	Sync. Grounding
11	Grounding	Grounding
12	Data (DDC)	Data (DDC)
13	Horizontal sync.	Horizontal sync.
14	Vertical sync.	Vertical sync.
15	Clock (DDC)	Clock (DDC)

# Connecting a VCR/Cable Box



## Connecting a Video or S-Video jack/Audio Jack

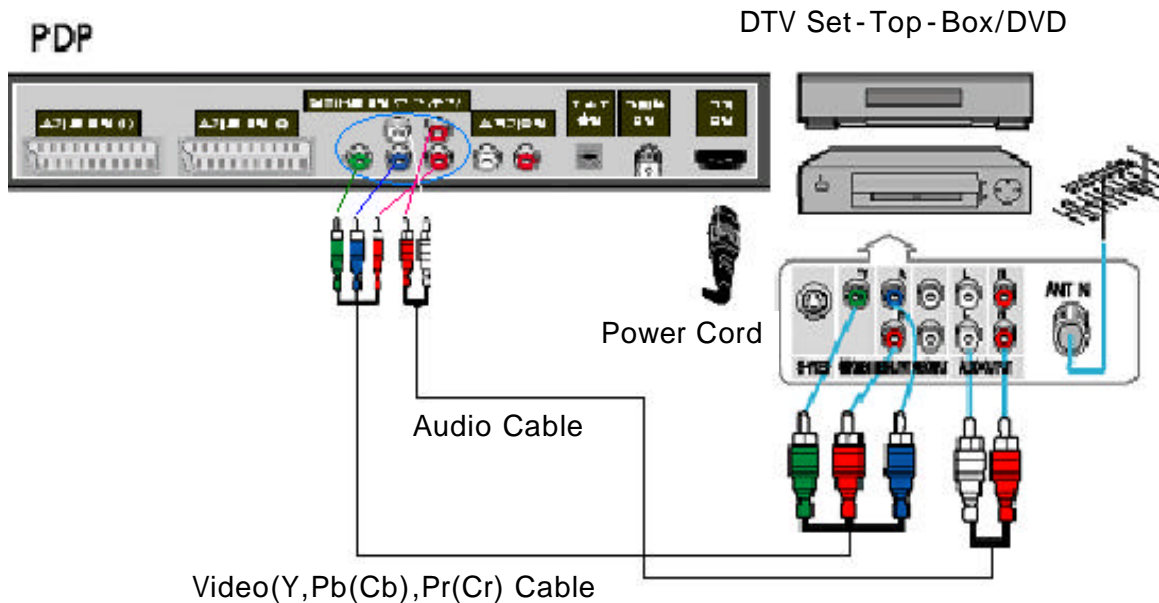
Connect an Video/S-Video cable between the Video/S-Video Output jack on the VCR/Cable box and the Video Input jack on the PDP.

- Connect an Audio cable.

Videotape Playback:

1. Turn on your VCR, insert a videotape and press the Play button on the VCR remote control.
2. Turn on PDP and press the Video or S-Video(if S-Video jack is connected.) button to select the VIDEO or S-VIDEO mode.

# Connecting a DTV Set-Top-Box/DVD



## Connecting a Video jack/Audio Jack

Connect a Video cable between the DTV Set-Top Box/DVD (Y,Pb(Cb),Pr(Cr)) Output jacks on the DVD/DTV Set-Top Box and the Video Component (Y,Pb(Cb),Pr(Cr)) Input jack on the PDP.

**Note:** That it is essential to match the color-coded connectors with a compatible DVD or DTV STB.

To Play DVD:

1. Turn on your DVD, insert a disc and press the Play button on the DVD remote control.
2. Turn on PDP and press the DVD button to select the DVD mode.

To Watch DTV:

1. Turn on your DTV receiver.
2. Turn on PDP and press the DTV button to select the DTV mode.

**Note:** When the Mode is selected in no signal, the Warning Message is displayed.



## Power Saver(PC Mode only)

This monitor has a built-in power management system called Power Saver. This power management system saves energy by switching your monitor into a low-power mode when it has not been used for a certain amount of time. This power management system operates with a VESA DPMS compliant video card installed in your computer. You use a software utility installed on your computer to set up this feature. See the table below for details.

Table 1. Power-saving modes

State	Normal Operation	Power-saving Function Mode		
		Standby Mode	Suspend Mode Position A1	Power-off Mode Position A2
Horizontal Sync	Active	Inactive	Active	Inactive
Vertical Sync	Active	Active	Inactive	Inactive
Video	Active	Blanked	Blanked	Blanked
Power Indicator	Green	Amber Blinking (0.5 sec Interval)	Amber Blinking (0.5 sec Interval)	Amber Blinking (0.5 sec Interval)

**Notes:**

- This monitor automatically returns to normal operation when horizontal and vertical sync return.
- This occurs when move the computer's mouse or press a key on the keyboard.
- For energy conservation, turn your monitor OFF when it is not needed, or when leaving it unattended for long periods.

# Setting up Your Monitor Plug and Play

## Setting up Your Monitor Plug and Play

Our adoption of the new VESA® Plug and Play solution eliminates complicated and time consuming setup. It allows you to install your monitor in a Plug and Play compatible system without the usual hassles and confusion. Your PC system can easily identify and configure itself for use with your display. This monitor automatically tells the PC system its Extended Display Identification Data(EDID) using Display Data Channel (DDC) protocols so the PC system can automatically configure itself to use the flat panel display. If your PC system needs a video driver, following the instructions given below according to the operating system your computer uses.

### Installing the Video Driver

---

When prompted by the operating system for the monitor driver, insert the Driver diskette included with this monitor. Driver installation is slightly different from one operating system to another. Follow the directions as appropriate for the operating system you have.

### Windows® 98, Windows® Me and Windows® 2000

---

1. Windows® 98, Windows® Me and Windows® 2000 will auto-detect your new monitor and start the "Add New Hardware Wizard" if the drivers are not already installed. Click the **NEXT** button to search for drivers.
2. Check the diskette drive box to install the drivers off the diskette provided with your monitor and click **NEXT**.
3. Confirm that Windows found the driver on the diskette and click **NEXT** again to install the driver.

To manually install or update the driver, follow the directions below:

1. Click on **START, SETTINGS, CONTROL PANEL, DISPLAY SETTINGS** tab, **ADVANCED, MONITOR** tab, **CHANGE**, This will start the "Add New Hardware Wizard".
2. Follow the same directions as given in the steps in the section above.

### Version 4.00.950A

---

1. Click on **START, SETTINGS, CONTROL PANEL, DISPLAY SETTINGS** tab, **CHANGE DISPLAY TYPE, CHANGE, HAVE DISK**.
2. Type the diskette drive letter in the box and click **OK**.

### Version 4.00.950B

---

1. Click on **START, SETTINGS, CONTROL PANEL, DISPLAY, ADVANCED PROPERTIES, MONITOR** tab, **HAVE DISK**.
2. Type the diskette letter in the box and click **OK**.

## How to Set up Your PC Software(Windows only)

## How to Set up Your PC Software (Windows only)

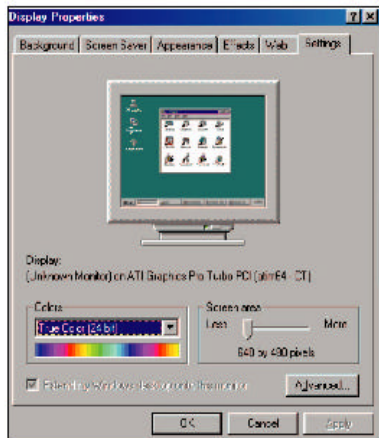
The Windows display-settings for a typical computer are shown below. But the actual screens on your PC will probably be different, depending upon your particular version of Windows and your particular video card. But even if your actual screens look different, the same, basic set-up information will apply in almost all cases. (If not, contact your computer manufacturer.)



On the windows screen, select in the following sequence :  
Start → Settings → Control Panel.



When the control panel screen appears, click on "Display" and a display dialog-box will appear.



Select the "Settings" tab in the display dialog-box.

The two key variables that apply the PDP-PC interface are “Resolution” and “Colors.” The correct settings for these two variables are:

- Size (sometimes called “Resolution”): 640 x 480 pixels.
- Color: “24-bit” color (might also be expressed as “16 million colors”) Shown at left is a typical screen for “Display” dialog box.

If a vertical-frequency option exists on your display settings dialog box, the correct value is “60” or “60 Hz.” Otherwise, just click “OK” and exit the dialog box.

Continued...



# Display Modes

## Display Modes

**Note:** Both screen position and size will vary, depending on the type of PC monitor and its resolution. The table below shows all of the display modes that are supported:

Video signal	Dots X Lines	Vertical Frequency (Hz)	Horizontal Frequency (kHz)	Vertical polarity	Horizontal polarity
IBM PC/AT Compatibler	640 x 350	70.086	31.469	-	+
		85.080	37.861	-	+
	640 x 400	85.080	37.861	+	-
	720 x 400	70.087	31.469	+	-
		85.039	37.927	+	-
	640 x 480	59.940	31.469	-	-
		70.000	35.000	-	-
		72.809	37.861	-	-
		75.000	37.500	-	-
		85.008	43.269	-	-
	800 x 600	56.250	35.156	-/+	-/+
		60.317	37.879	+	+
		72.188	48.077	+	+
		75.000	46.875	+	+
		85.061	53.674	+	+
	1024 x 768	60.004	48.363	-	-
		70.069	56.476	-	-
		75.029	60.023	+	+
		84.997	68.677	+	+

- The PDP operates abnormally if a non-standard video format is selected.

**Notes:**

- When this PDP is used as a PC display, 24-bit color is supported (over 16 million colors).
- Your PC display screen might appear different.  
Depending on the manufacturer (and depending on your particular version of Windows). Check your PC instruction book for information about connecting your PC to a PDP.
- In some cases, abnormal signals (such as stripes) might appear on the screen when the PC power is turned off (or if the PC is disconnected). If so, press the Source button to enter the VIDEO mode. Also, make sure that the PC is connected.
- Connect only a PC monitor to the monitor output port while viewing the PC screen. (Otherwise, random signals might appear).



# Specifications

The information on power consumption and screen size is shown on the rear side of the Product.

Exterior design and product specifications are subject to change without prior notice to improve the performance of this product

Model		P42SX
Screen Size		42inch
Freequency	Horizontal	21.9~68.7 KHz
	Vertical	56~85 Hz
Resolution	Maximum Mode	1024x768/85Hz(PC), 1280x1024(DVI)
Synchronization	Separate	TTL, Positive or Negative
	Composite	TTL, Positive or Negative
	Sync-on-Green	Composite 0.3Vp-p, Negative(Video 0.7Vp-p Positive)
Video Signal		0.7Vp-p, Positive
TV/Video	Color Signal	NTSC
	Sound System	M/N
	Video Format	CVBS, S-VHS
DTV	YPbPr	Composite
	RGB	Separate
	Video	0.7Vp-p
DVI		TMDS
Dimensions	Display	1027(W) x 80(D) x 633(H)mm
	Remote Control	56(W) x 23(D) x 190(H)mm
Weight	Display	30KG
	Remote Control	140g(Battery Included)
Input Voltage		AC100 ~240V 50/60Hz
Power Consumption		Max. 320W