

The Bluetooth Headset Quick Guide

1—Check the package contents

The Bluetooth ships with two package configurations: Package A and Package B. Unpack the contents of the package you purchased and check that the following items are included:



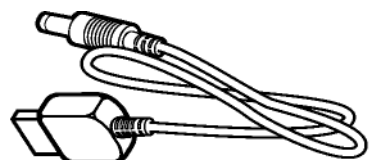
Bluetooth A/V Headset



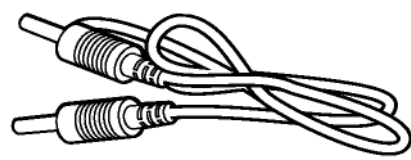
Bluetooth A/V Transmitter (Package A)



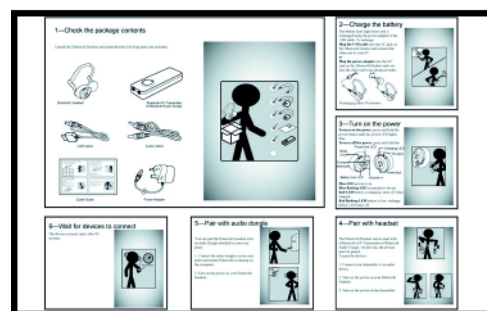
Bluetooth Audio Dongle (Package B)



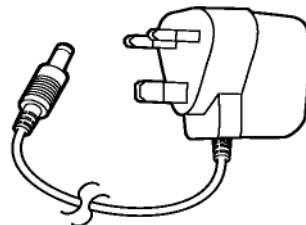
USB Charge Cable



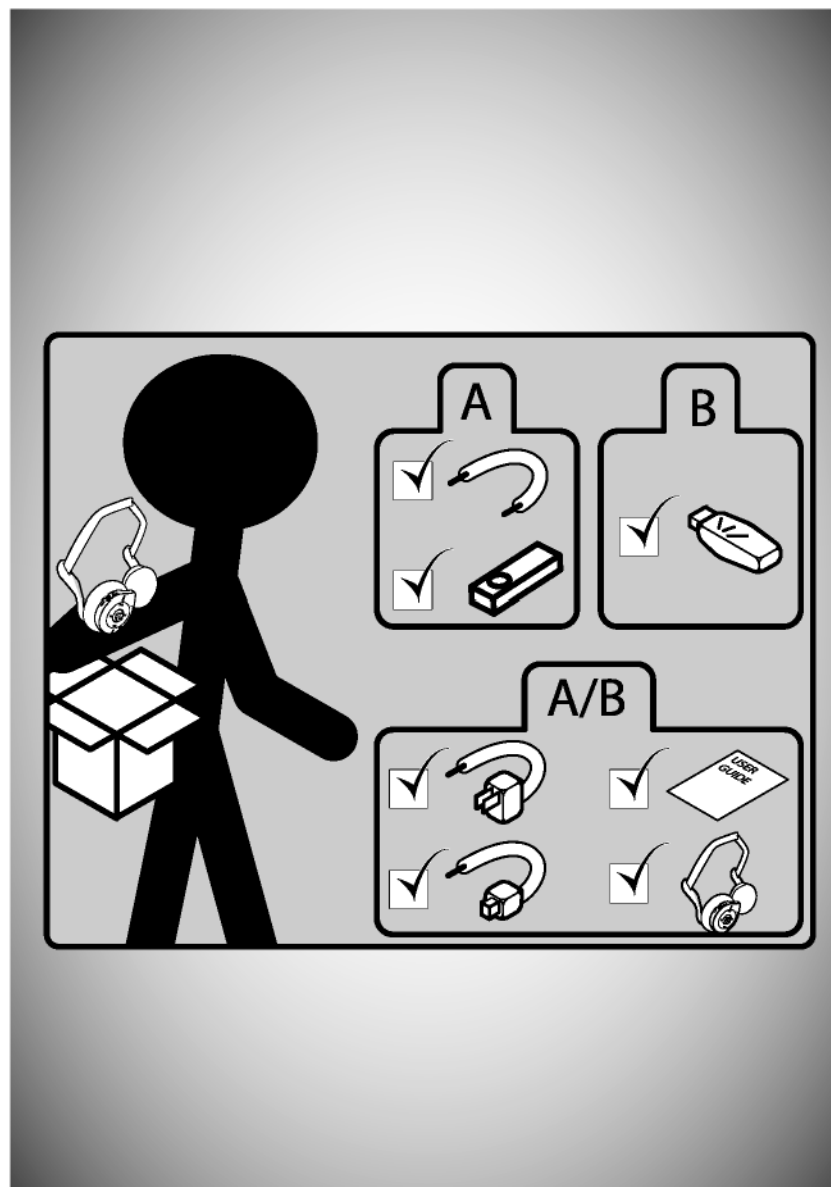
Audio Cable (Package A)



Quick Guide



Power Adapter

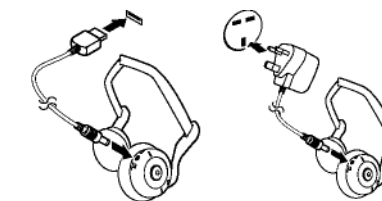


2—Charge the battery

The battery lasts eight hours and is recharged using the power adapter or the USB cable. To recharge:

Plug the USB cable into the DC jack on the Bluetooth Headset and connect the other end to your PC. *[or]*

Plug the power adapter into the DC jack on the Bluetooth Headset and connect the other end to an electrical outlet.



Note: Before first use, charge the battery fully for ten hours. Thereafter, recharging takes 90 minutes.



3—Turn on the power

To turn on the power, press and hold the power button (about 3 seconds) until the power LED lights blue.

To turn off the power, press and hold the power button (about 3 seconds) until the power LED turns off.

Link LED power is on
Link LED flashing connected to device
Charge LED battery is charging, turns off when charged

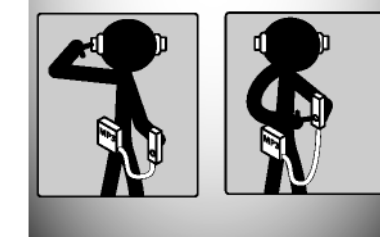
Low Battery LED battery is low, recharge before LED turns off



4—Pair with Bluetooth Headset

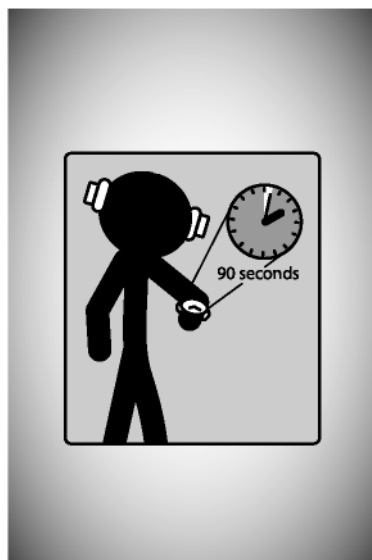
The Bluetooth Headset can be used with a Bluetooth A/V Transmitter or Bluetooth Audio Dongle. On first use, the devices must be paired. To pair the devices:

1. Connect your transmitter to an audio device.
2. Power on your Bluetooth Headset.
3. Power on the transmitter.



6—Wait for devices to connect

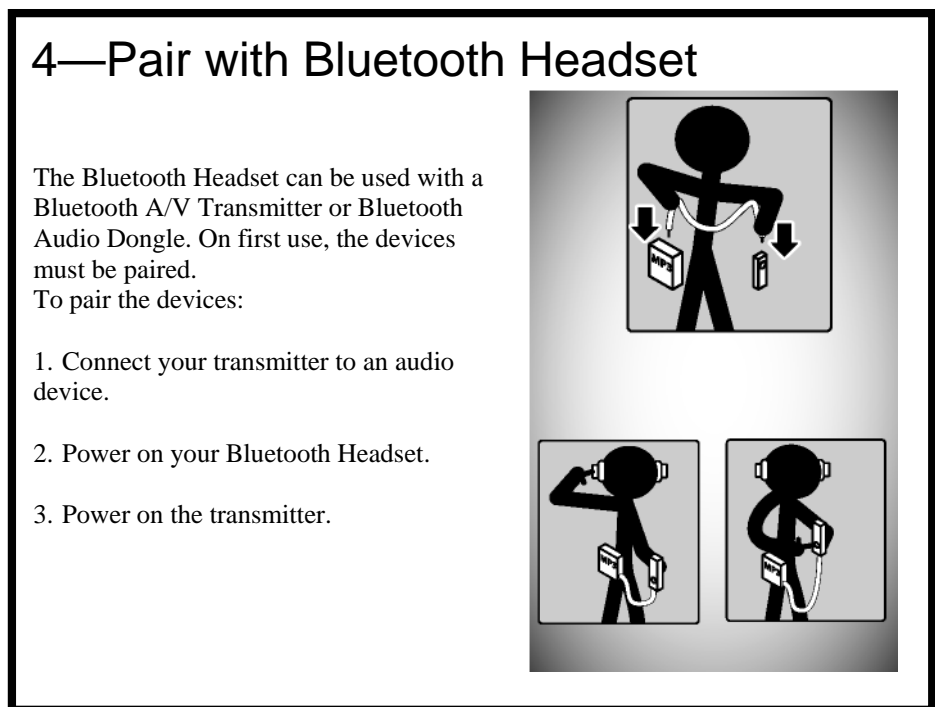
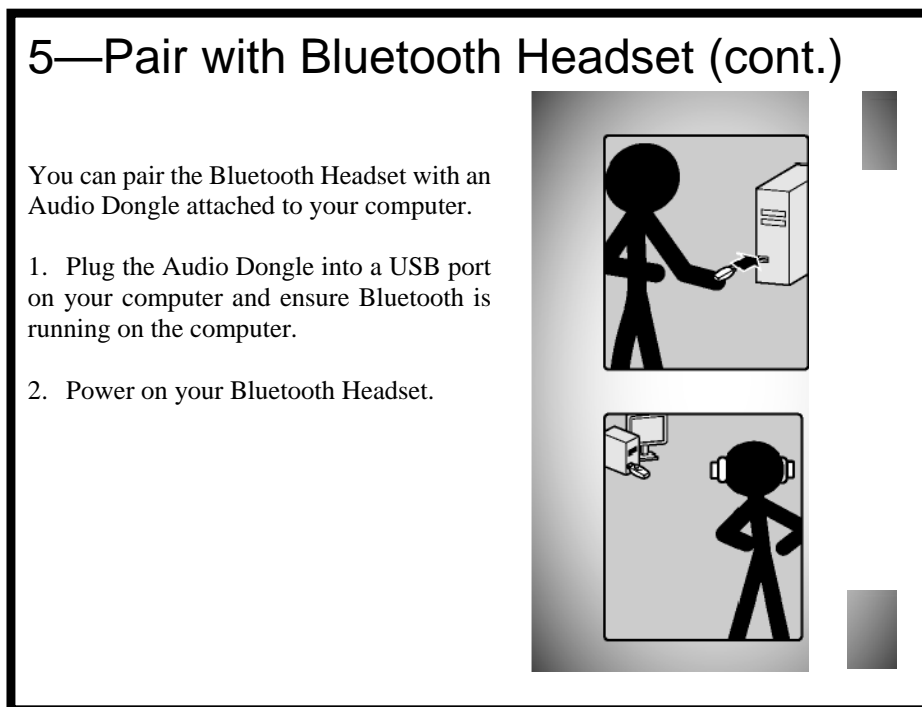
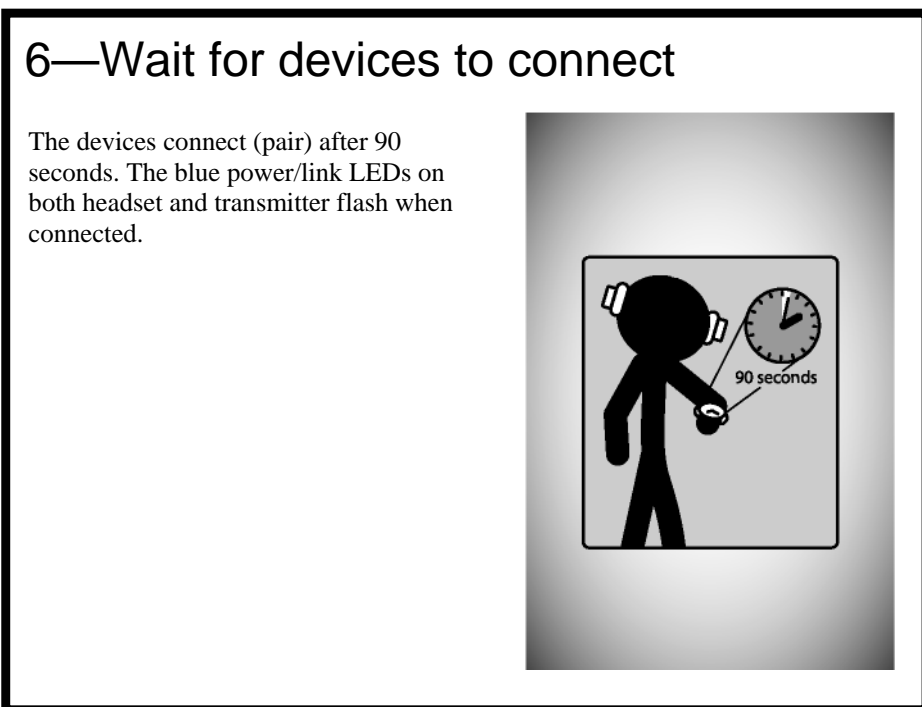
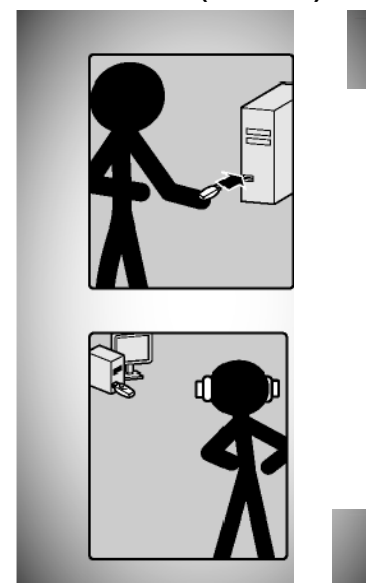
The devices connect (pair) after 90 seconds. The blue power/link LEDs on both headset and transmitter flash when connected.



5—Pair with Bluetooth Headset (cont.)

You can pair the Bluetooth Headset with an Audio Dongle attached to your computer.

1. Plug the Audio Dongle into a USB port on your computer and ensure Bluetooth is running on the computer.
2. Power on your Bluetooth Headset.



7—Using with your mobile phone

The Bluetooth Headset can be used with a Bluetooth-enabled mobile phone.

To pair with your phone

1. Enable Bluetooth on your phone (refer to the phone's user manual).
2. Turn on the headset. Check that no other device connects with the headset by confirming that the power/link LED is not flashing.
3. In the phone's Bluetooth menu, search for devices.
4. Select **KBT1 Headset**.
5. Enter the PIN code "0000".

Answering calls

To **answer a call**, push the play button. To **end a call**, push the power button again.



8—Using IVT BlueSoleil™

To use the IVT BlueSoleil, first you must pair the Bluetooth Headset with your computer.

1. Ensure Bluetooth is running on your computer.
2. Power on your Bluetooth Headset.

Note: The IVT BlueSoleil software is not included with your Bluetooth Headset.

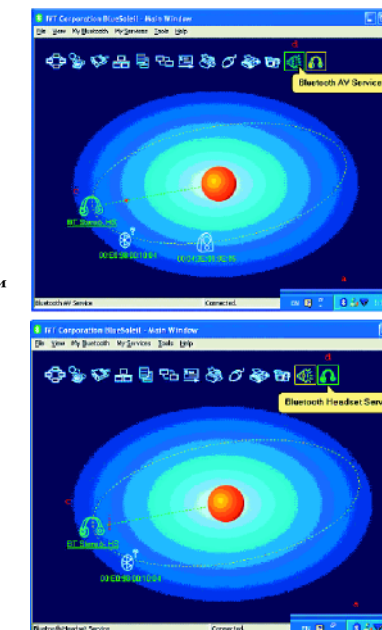
9—Using profiles

Using the AV Profile to play audio

1. Double-click the **BlueSoleil** icon in the task tray.
2. Press **F5** to search for Bluetooth devices.
3. Double click the **KBT1 Headset** icon.
4. Click **Bluetooth AV Service** to create a connection shortcut.

Using the Headset Profile to play Skype™

1. Double-click the **BlueSoleil** icon in the task tray.
2. Press **F5** to search for Bluetooth devices.
3. Double click the **KBT1 Headset** icon.
4. Click **Bluetooth Headset Service** to create a connection shortcut.



10—Configuring BTAUDIO audio output

1. Open **Control Panel** and double-click **Sound and Audio devices**.
2. Select the **Audio** tab.
3. Under **Sound playback**, change the device to **BTAUDIO**.
4. Under **Sound recording**, change the device to **BTAUDIO**.
5. Click **OK**.



11—Using WidComm® Bluetooth software

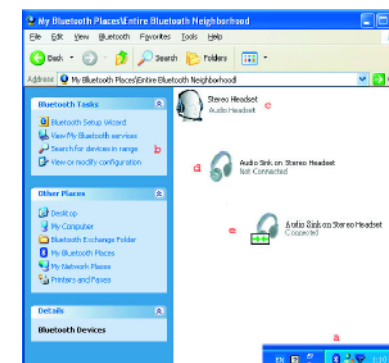
To use the WidComm Bluetooth software, first you must pair the Bluetooth Headset with your

computer.

1. Ensure Bluetooth is running on your computer.
2. Power on your Bluetooth Headset.

Using the AV Profile to play audio

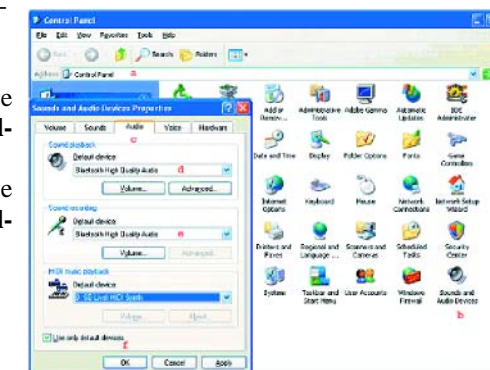
1. Double-click the **WidComm** icon in the task tray.
2. Click **Search for devices in range**.
3. Double-click the **Stereo Headset** icon.
4. Click **Audio Sink on Stereo Headset** to create a connection shortcut.



Note: The WidComm Bluetooth software is not included with your Bluetooth Headset.

12—Configuring Widcomm audio output

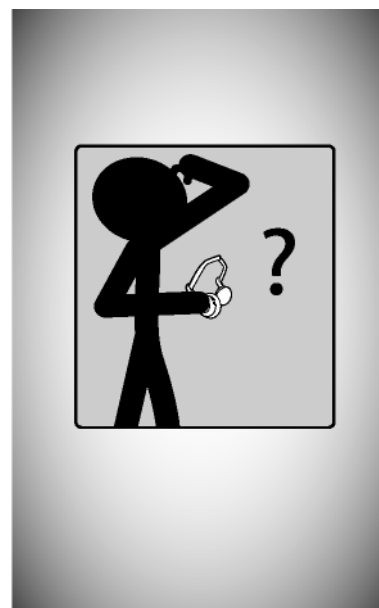
1. Open **Control Panel** and double-click **Sound and Audio devices**.
2. Select the **Audio** tab.
3. Under **Sound playback**, change the device to **Bluetooth High Quality Audio**.
4. Under **Sound recording**, change the device to **Bluetooth High Quality Audio**.
5. Click **OK**.



13—Troubleshooting

If the Bluetooth Headset does not work, try the following:

- Ensure connecting devices are charged
- Turn off all devices and then turn them on in the order shown in this guide
- Ensure devices are within the 10-meter range
- If the Bluetooth Headset cannot be powered off, press the reset button. The transmitter will auto-pairing with the headset when power on. If you want to use another headset, please turn the transmitter off/on again.



	1 4	
Standards	Bluetooth specification V1.2 compliant Bluetooth A2DP profile (AV Profile) Headset and Hand free profile Power save mode (power sleep mode) AVRCP profile	
Frequency Band	2402 ~ 2480 MHz	
Tx Power	0.25 ~ 2.5mW (Bluetooth Power Class II)	
Rx Sensitivity	< -80dBm (BER 0.1%)	
Distance	> 10m (open space)	
Audio Streaming Format	SBC 48.000 kHz	
Audio Frequency Range	20Hz ~ 22 kHz	
Audio S/N	> 85dB	
Audio THD	< -83dB	
Audio Output Power	> 20mWrms	
Power supply	Rechargeable battery	
Physical Specification:	Dimension: TBD (max), TBD (min) Weight: TBD gm	
Environmental Range:	Operating temperature: -10 ~ +50° C Humidity: Relative humidity 0 ~ 95%	

Volume Up Switch	UP: volume up
Volume Down Switch	Down: volume down
Play switch	Play/Pause/Answer
Reset Switch	Hardware reset button
Power Switch	Reject/Reconnect. Press 3 sec for Power on/off
Mute switch	Mute On/Off
Power charge	0.8 DC in connector.
Audio MIC input	Build-in MIC
LINK LED	Power On: Red On 3 seconds after power on delay 3 seconds then led Off. Link Status: Discovery: Blue on Linked: Blue blinking AV Linked: LED flash twice a time in every 2 sec HS/HF Linked: LED flash once a time in every 2 sec
Low battery LED	Low Battery Indicator: Red blinking 0.3 seconds On, 2 seconds Off.
Charge LED	Charge Led: Steady on Red

Federal Communication Commission Interference Statement

This equipment has been tested and found to comply with the limits for a Class B digital device, pursuant to Part 15 of the FCC Rules. These limits are designed to provide reasonable protection against harmful interference in a residential installation. This equipment generates, uses and can radiate radio frequency energy and, if not installed and used in accordance with the instructions, may cause harmful interference to radio communications. However, there is no guarantee that interference will not occur in a particular installation. If this equipment does cause harmful interference to radio or television reception, which can be determined by turning the equipment off and on, the user is encouraged to try to correct the interference by one of the following measures:

- Reorient or relocate the receiving antenna.
- Increase the separation between the equipment and receiver.
- Connect the equipment into an outlet on a circuit different from that to which the receiver is connected.
- Consult the dealer or an experienced radio/TV technician for help.

This device complies with Part 15 of the FCC Rules. Operation is subject to the following two conditions: (1) This device may not cause harmful interference, and (2) this device must accept any interference received, including interference that may cause undesired operation.

FCC Caution: Any changes or modifications not expressly approved by the party responsible for compliance could void the user's authority to operate this equipment.

IMPORTANT NOTE:

FCC Radiation Exposure Statement:

This equipment complies with FCC radiation exposure limits set forth for an uncontrolled environment. End users must follow the specific operating instructions for satisfying RF exposure compliance.

This transmitter must not be co-located or operating in conjunction with any other antenna or transmitter.