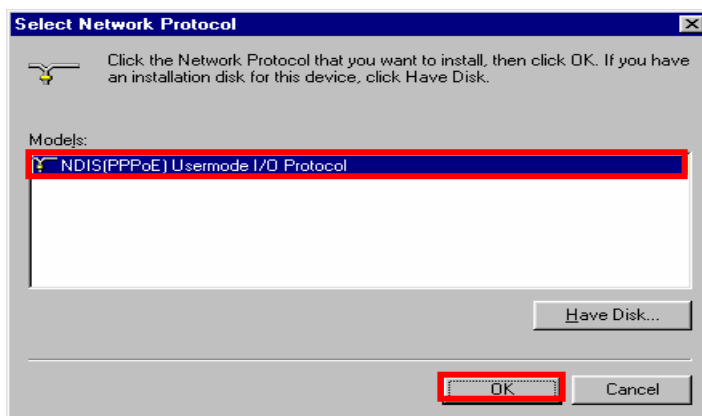


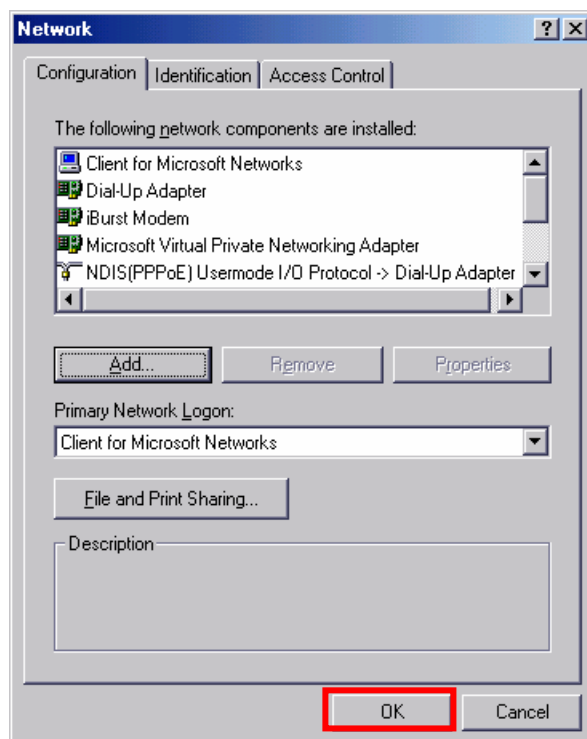
51. Select [NDIS(PPPoE) Usermode I/O Protocol], click the [OK] button.



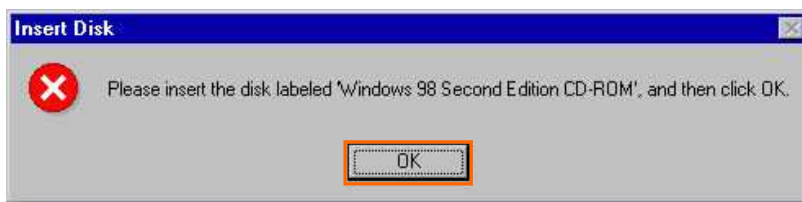
NOTE: If the same dialog at step 47 is popped up again, cancel once and repeat from step 45.

52. Click the [OK] button.

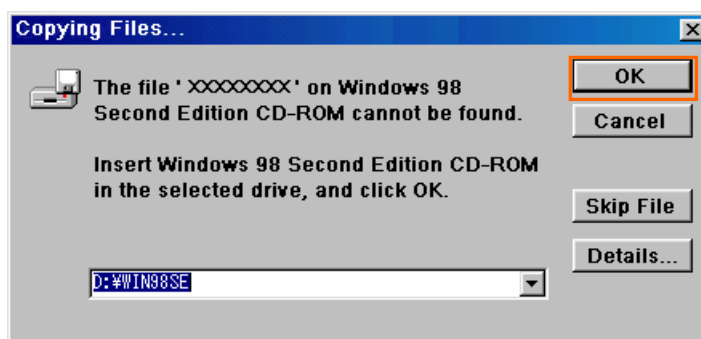
NOTE: One of the protocols added shall be;
“NDIS(PPPoE) User mode I/O Protocol -> iBurst Modem”; or
“NDIS(PPPoE) User mode I/O Protocol -> iBurst Modem Type 02-01”.



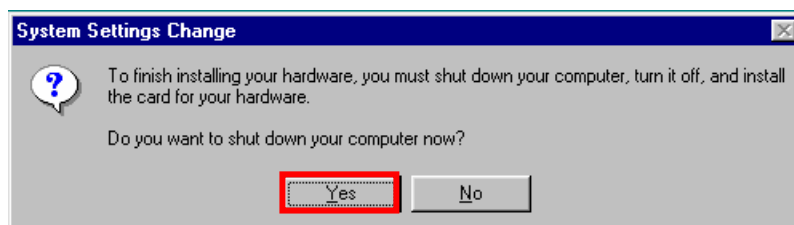
NOTE: If the dialog window as shown below appears, insert [Windows 98SE CD-ROM] into the CD-ROM drive and click the [OK] button.



NOTE: If the dialog window as shown below appears, insert [Windows 98SE CD-ROM] into your PC and enter the directory of your [Windows 98SE CD-ROM], click the [OK] button. "xxxxxxx" in the picture below is a file name that can not be found.



53. The dialog window shown below will appear, click the [Yes] button, and shut down your PC, then turn on your PC again.



NOTE: If the PC doesn't shutdown itself, try to press Alt+Ctrl+Del keys several times.

NOTE: To connect to the Internet, refer to page 64.

Installation for Mac OS X

NOTE:

The installation software are applied to Mac OS X 10.1.5/10.2/10.3/10.4 except Mac Intel models. Make sure OS version on your PC and a corresponding installation software package for the iBurst Modem.

NOTE:

All screen copies in this section are based on Mac OS X 10.4 except in step 3.

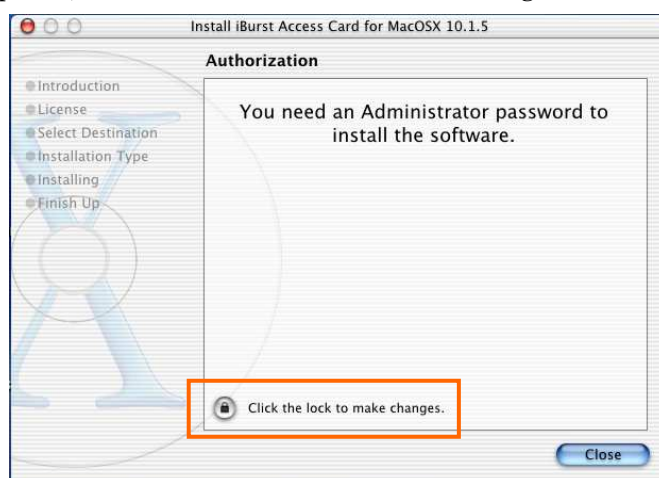
1. Make sure to remove the iBurst Modem out from your PC.

ATTENTION:

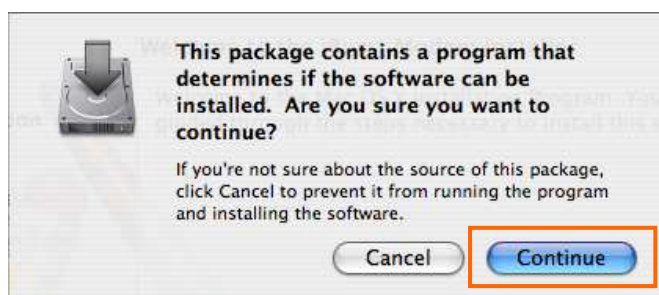
Don't plug the iBurst Modem into your PC until completion of installation.

2. Turn your PC on and login as an administrative user.
3. Insert the Software Utility CD provided by the network operator into your CD-ROM drive; or execute the appropriate installation software.

NOTE: If the window shown below appears, click “Click the lock to make changes”.



4. In case of version 10.3 or later, the confirmation message shown below will appear. Click [Continue] button.



5. In case of version 10.2 or older, “Authenticate” dialog will appear.

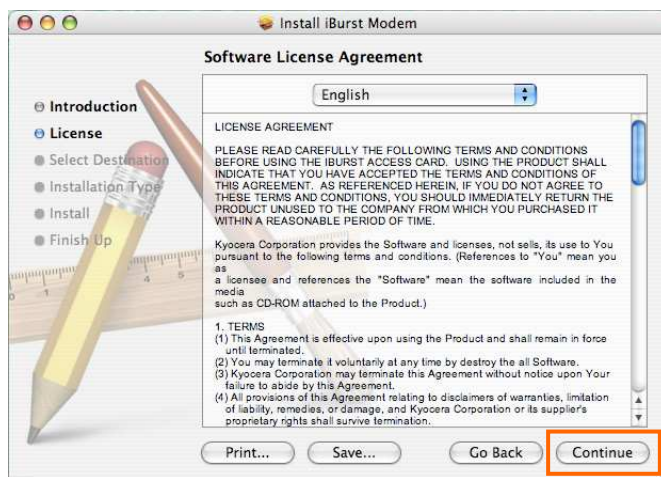
Enter an administrator name and password, and then click the [OK] button.



6. Click the [Continue] button.



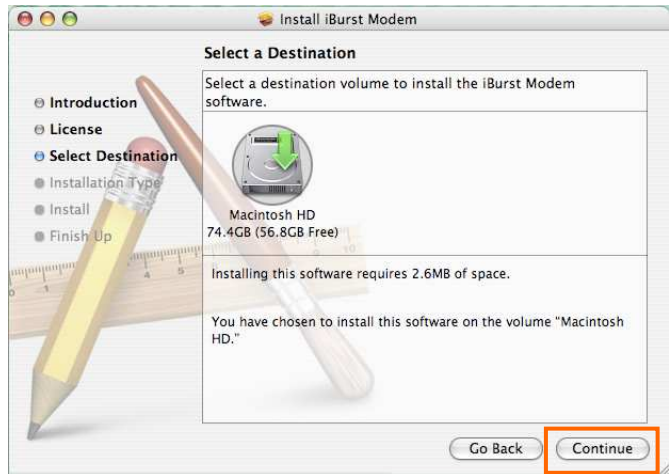
7. Click the [Continue] button.



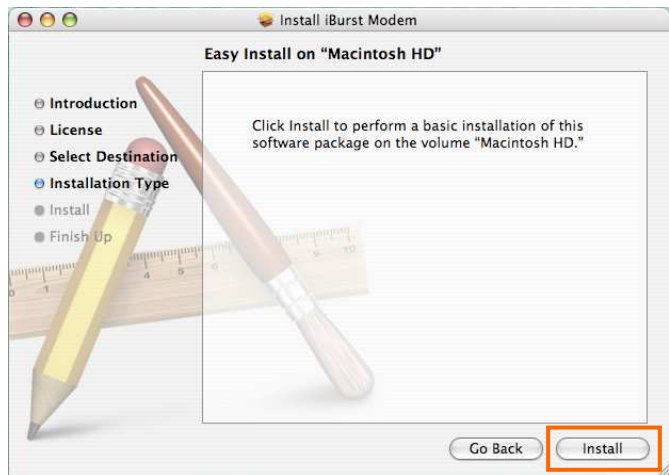
8. The following dialog will appear click the **[Agree]** button.



9. Select a destination disk, and then click the **[Continue]** button.



10. Click the **[Install]** button after appearing dialog window as shown below.



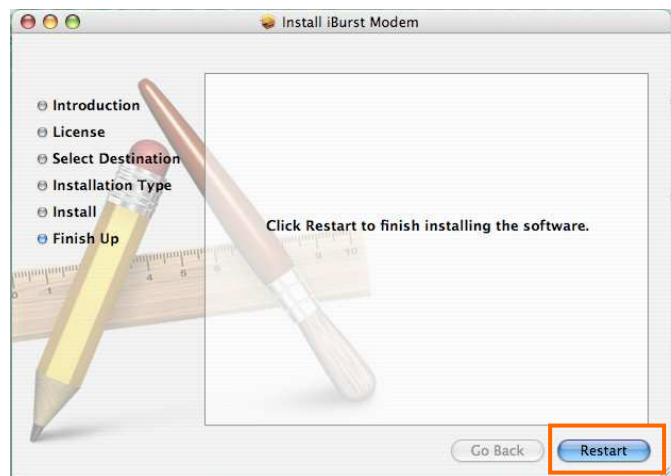
NOTE: In case of version 10.4, "Authenticate" dialog will appear at here.



11. Click the [Continue Installation] button.



12. When finish installing, the dialog shown below will appear. Click the [Restart] button.



NOTE: To connect to the Internet, refer to page 65.

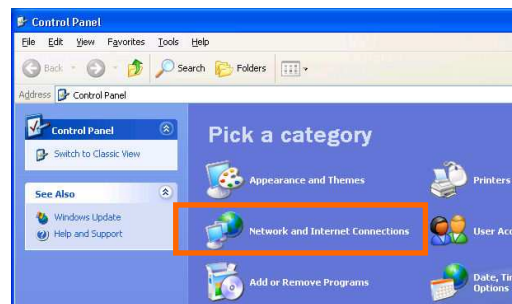
Connection Establishment

Connection Establishment for Windows XP

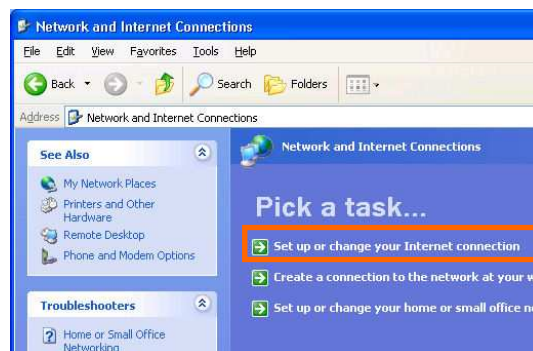
1. Make sure to plug the iBurst Modem into a PC card slot of your PC.
2. Click the [Start] button, followed by selecting [Control Panel] as shown below.



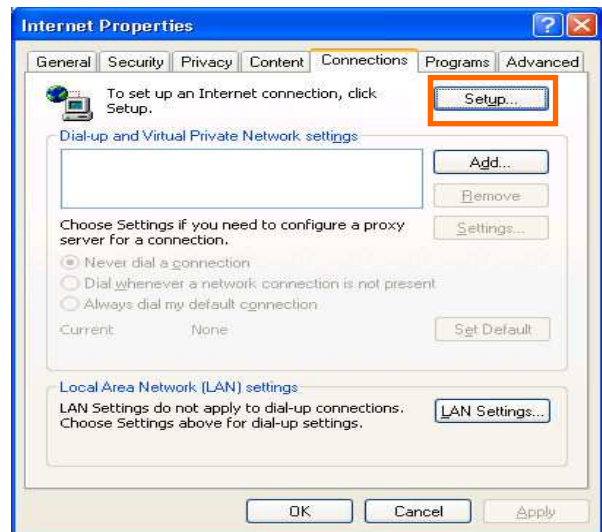
3. Click [Network and Internet Connections] in the [Control Panel] display.



4. Next, click [Set up or Change your Internet connection].



5. When the **[Internet Properties]** dialog window appears, click the **[Setup]** button.



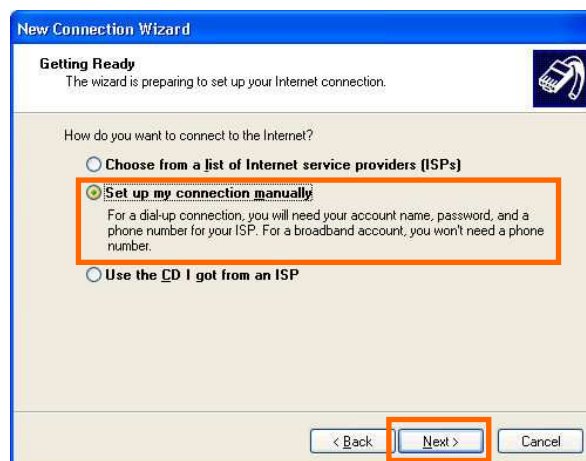
6. **[New Connection Wizard]** will begin and the dialog window as shown below will appear. Click the **[Next >]** button in the dialog window.



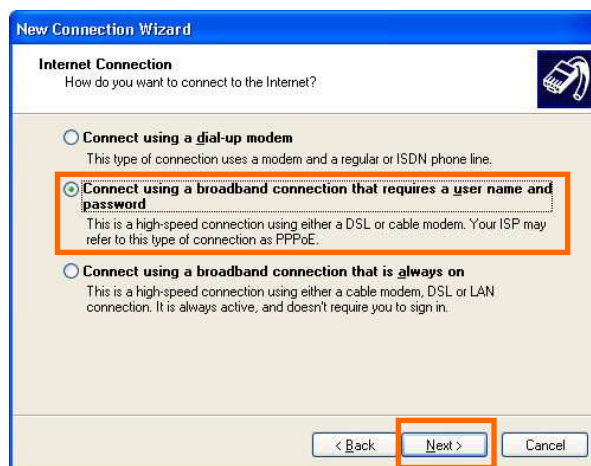
7. Select **[Connect to the Internet]** and click the **[Next >]** button.



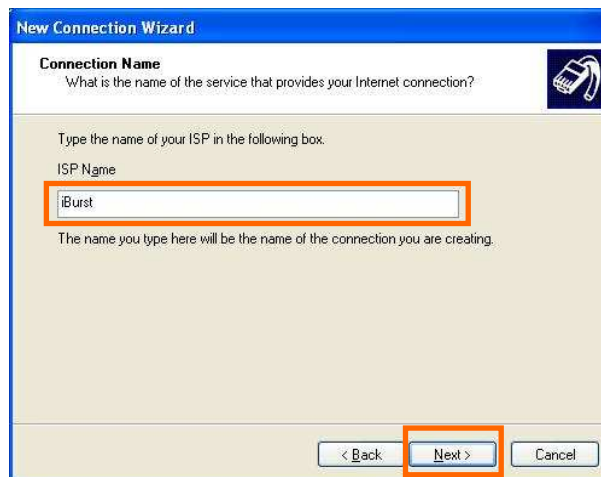
8. Select [Set up my connection manually] and click the [Next >] button.



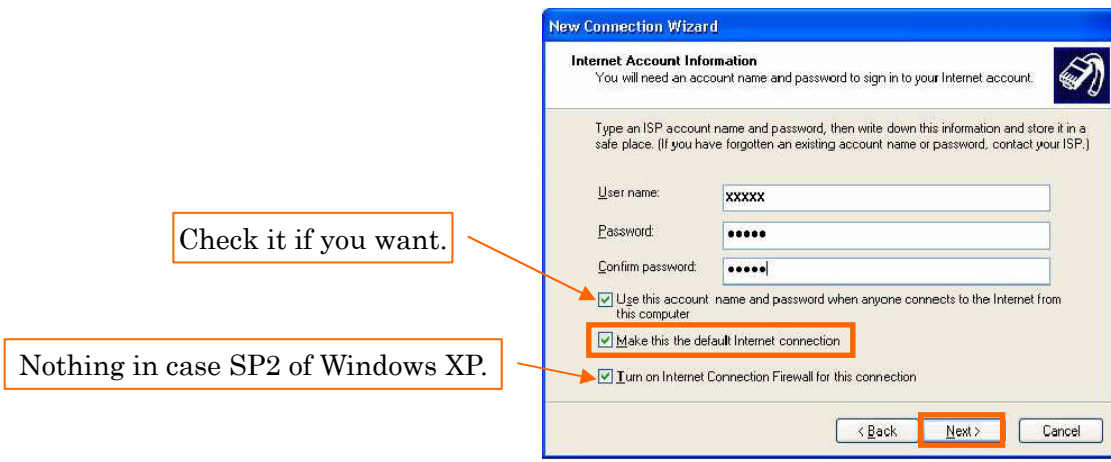
9. Select [Connect using a broadband connection that requires a user name and password] and click the [Next >] button.



10. Fill in [ISP Name] edit box with an ISP Name, followed by clicking the [Next >] button. Note that any ISP name is acceptable. ISP Name is "iBurst" for example.



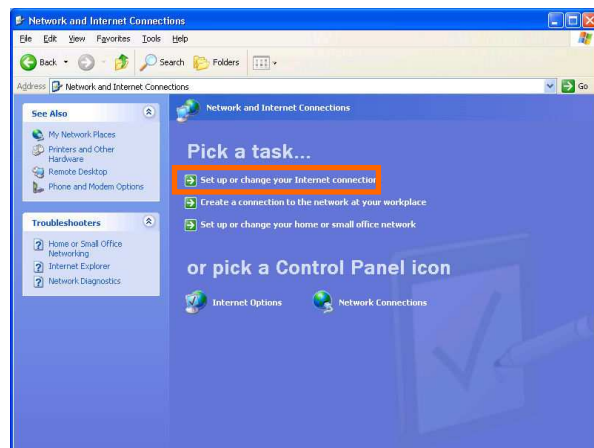
11. Enter user name and password and make sure that the [Make this the default Internet connection] check box is checked. Click the [Next >] button.



12. Click the [Finish] button.



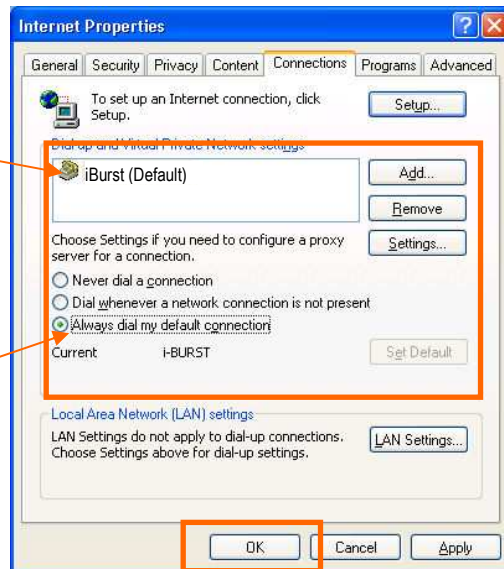
13. When the [Network and Internet Connection] window pane appears again, click [Set up change your Internet Connection].



14. When the [Internet Properties] dialog window appears and the [Connections] pane is displayed, confirm the connection name and make sure that the [Always dial my default connection] radio button is checked, followed by clicking the [Apply] button. Then, click the [OK] button to close the dialog window

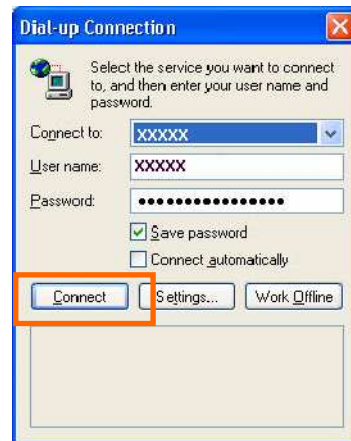
The ISP name specified at step 10 above must be the default connection.

Select "Always dial ...".

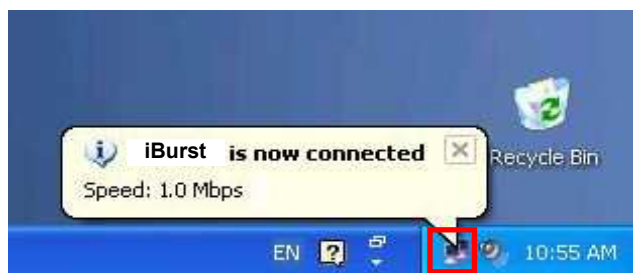


15. At this point, the connection configuration is completed. When you open Internet Explorer, the [Dial-up Connection] dialog window as shown below will appear. Click the [Connect] button to connect to the network.

NOTE:
If you don't choose "Always dial my default connection" at step 14 above, you have to open this dial-up connection dialog manually every when you want to connect to the Internet.



16. When the connection establishment process is complete, a message indicating completion of the connection will appear at the task tray as shown below.



Connection Establishment for Windows 2000/Me/98SE

NOTE: You have to execute the procedure in this section every when you want to connect to the Internet.

1. Make sure to plug the iBurst Modem into a PC card slot of your PC.
2. Double click the shortcut icon on the PC desktop; or click [Start] -> [Programs] -> [iBurst] -> [iBurst_Modem] Connect UTL]



3. Enter user name and password and click the [Connect] button.

Check it if you want.



NOTE: 'Cancel' to close the dialog.
'Property' to open properties of the dial-up connection for iBurst Modem.

4. While connecting to network, the following connection status window is displayed.



5. When logging on successfully, a network connection icon will be displayed at the task tray.

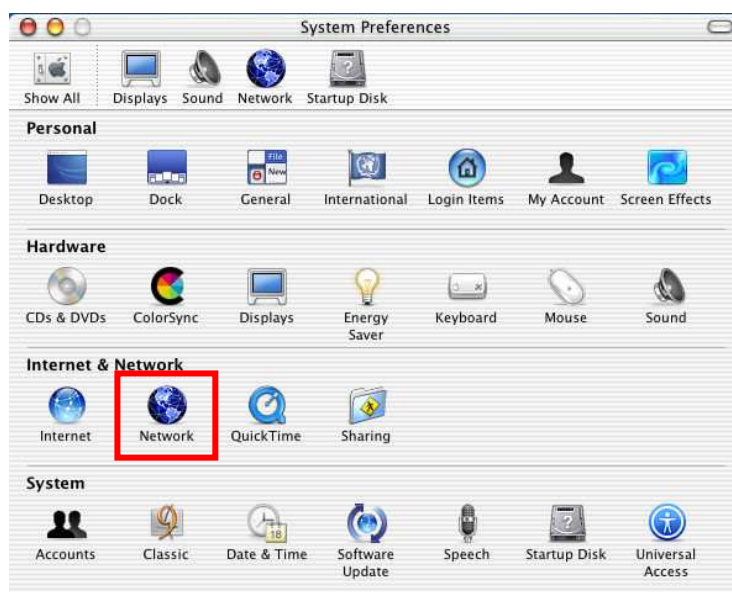


Connection Establishment for Mac OS X

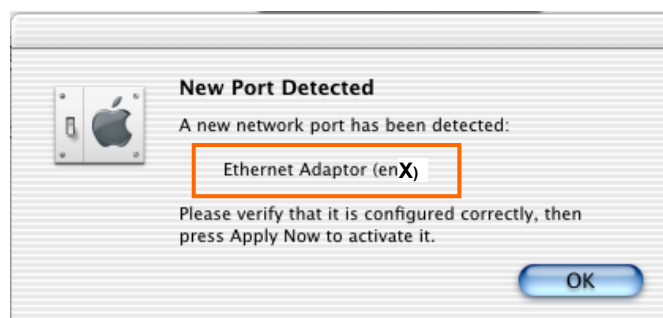
1. Make sure to plug the iBurst Modem into a PC card slot of your PC.
2. Select [System Preferences...] on the Apple menu.



3. Click [Network] in the [System Preferences] window.



4. After the 1st insertion of the iBurst Modem, you will find the pop-up shown below. Take note the name of the new port. Click [OK].



5. Click on the drop down menu of the [Show]; and
Select [Ethernet Adaptor (en X)] indicated in the previous step.

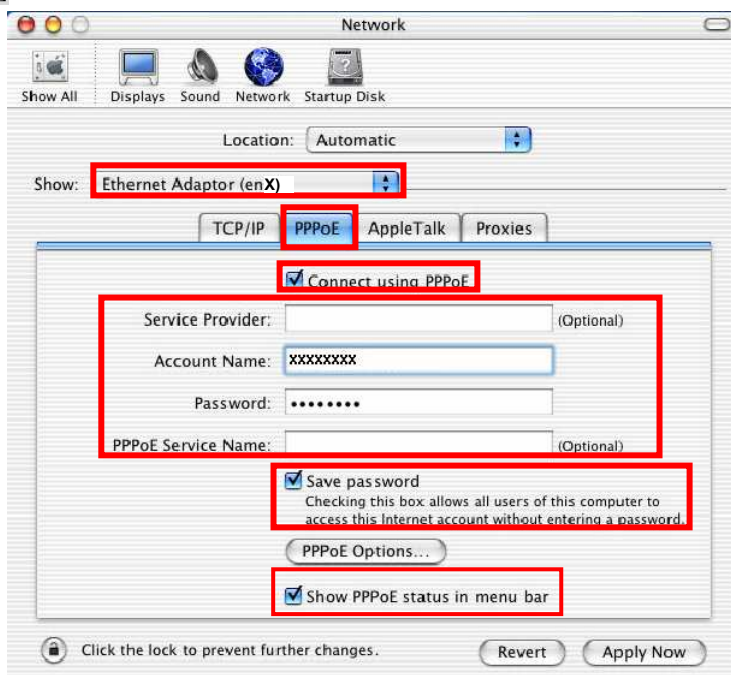
NOTE: The ‘X’ in the “en X” is the port number and it shall be the biggest one among them when 1st connection.

Additionally, set as follows.

- Select the [PPPoE] tab.
- Check [Connect using PPPoE].
- Enter [Account Name] provided by the network operator.
- Enter [Password] provided by the network operator.
- Check [Save password] If you require the computer to remember your password.
- Check [Show PPPoE status in menu bar].

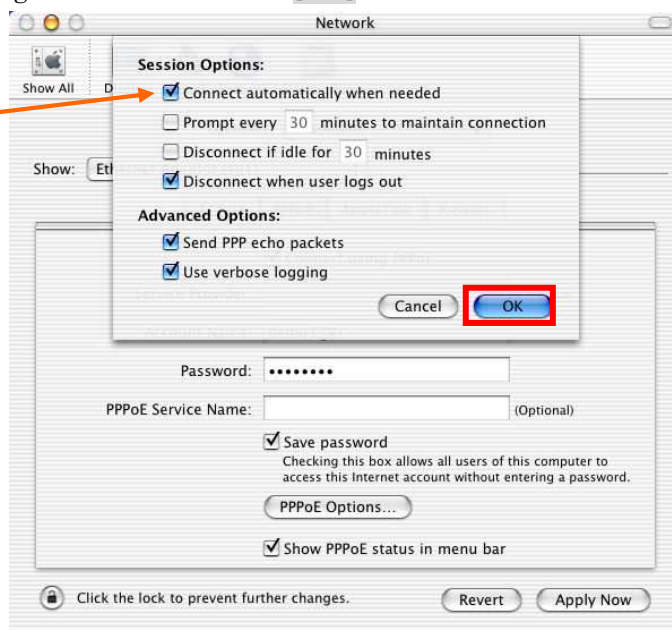
NOTE: If uncheck this option, you cannot see the icon described in the step 9.

- And then, click [PPPoE Options...]

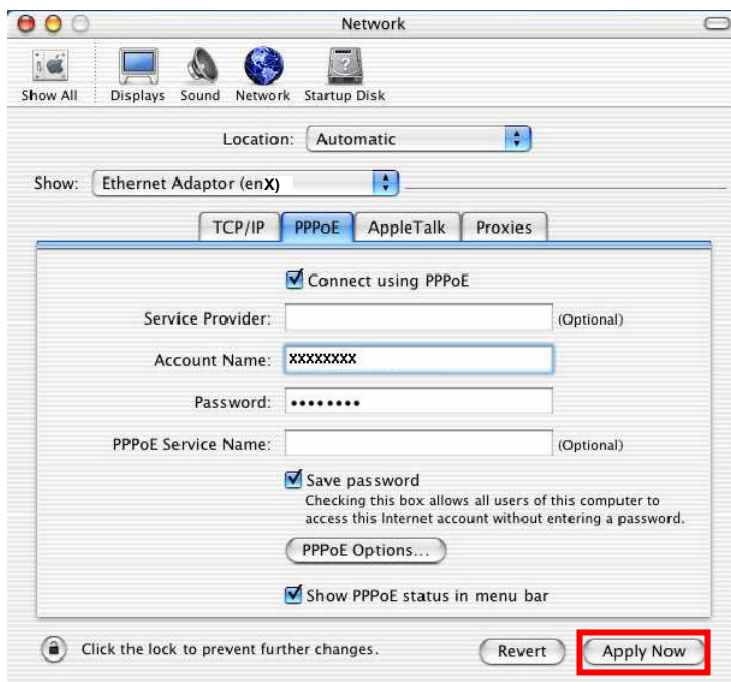


6. On the PPPoE Options dialog, set everything as follows and click [OK].

NOTE:
If you don't enable "Connect automatically when needed", you have to make connection by following from step 9 every when you want to connect to the Internet.



7. Click the [Apply Now] button.

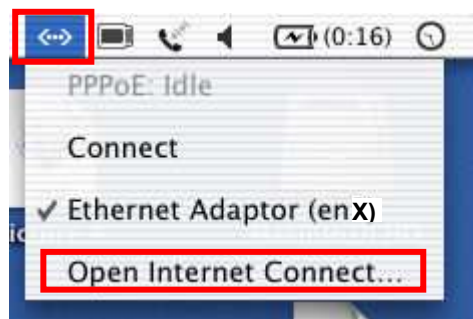


8. At this point, the connection configuration is completed. When you open any internet application software, e.g. a web browser, the internet connectivity will be activated automatically.

NOTE: To check the internet connectivity, follow the steps below.

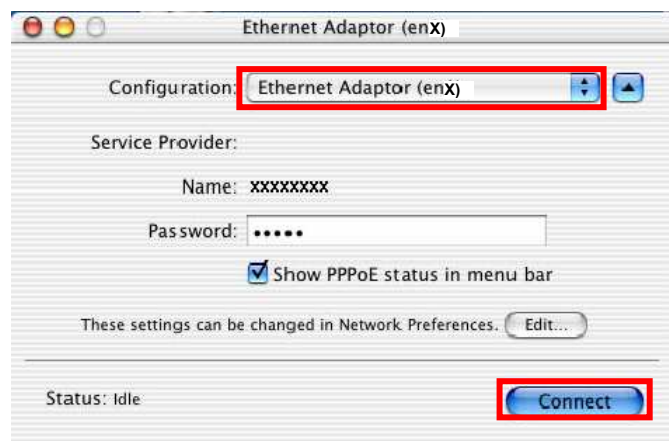
9. Click the <---> icon at the top right of screen, and select the Ethernet Adaptor you choose in step 5.

In addition, click <---> again and choose [Open Internet Connect]



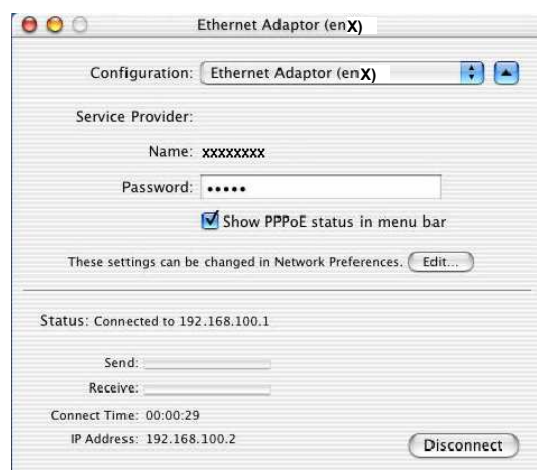
10. Click on drop down menu of [Configuration], and select [Ethernet Adaptor (en X)].

The configuration of [Ethernet Adaptor (en X)] will be displayed, click the [Connect] button.



NOTE: In case of version 10.4, dialog layout is different and you can find the adaptor by expanding icon array, clicking “>>”, at the top of the dialog.

11. When the box [Show PPPoE status in menu bar] is checked, PPPoE Status [Connected] will be displayed after having finished connection. However, Ethernet Adaptor display will little differ by OS Version.



Chapter 3


Utility Software

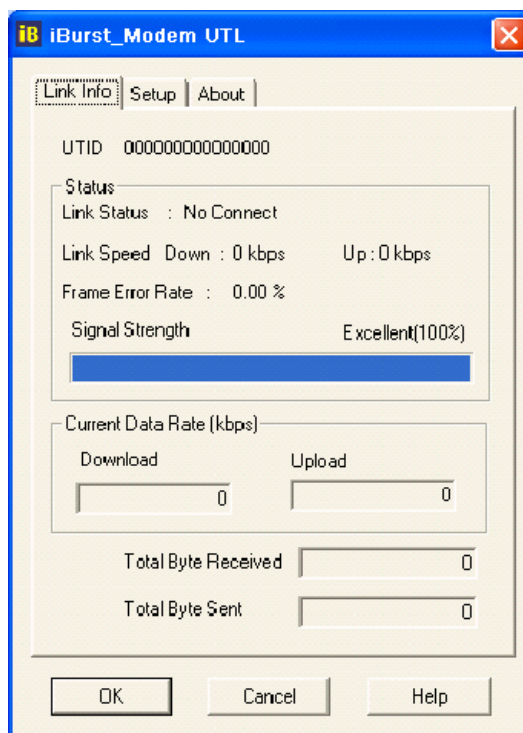
**This chapter describes the features and usage of the
Utility Software for iBurst Modem.**

Using Utility Software

Using Utility Software for Windows

To open the utility dialog.

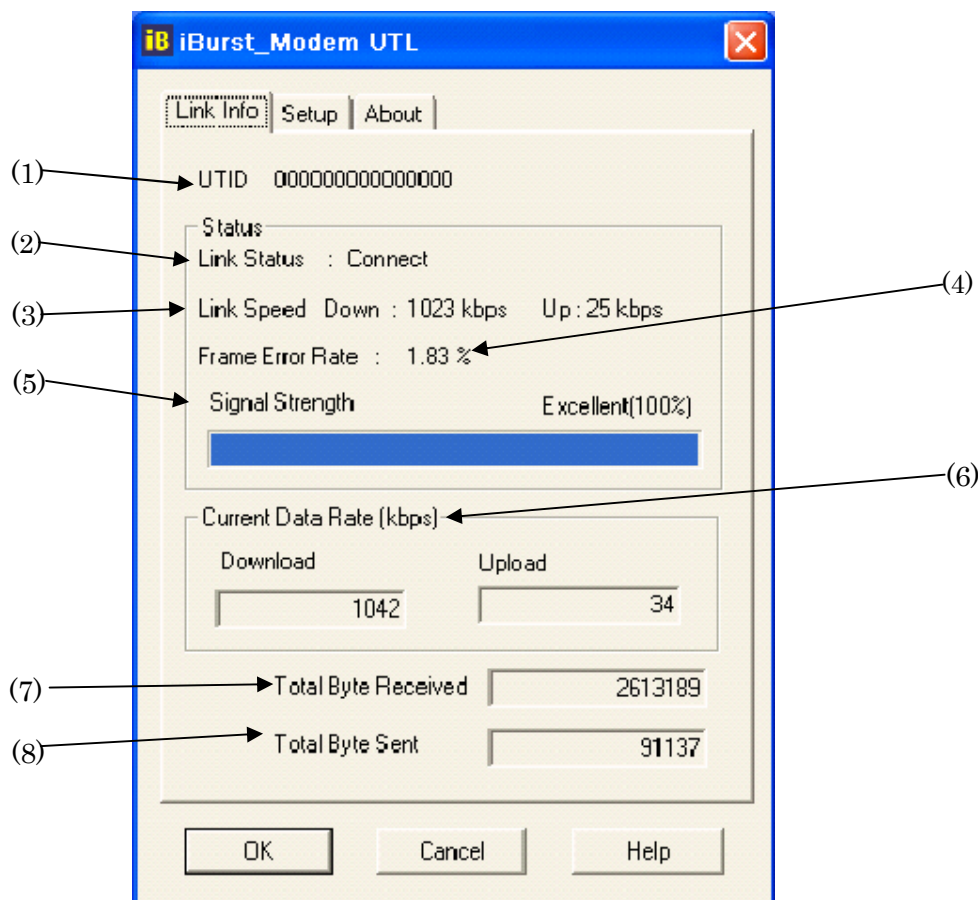
1. To open the utility dialog, click the icon  on the computer's task tray; or click [Start] -> [Programs] -> [iBurst] -> [iBurst_Modem UTL]. When the dialog opens, the [Link Info] pane will be displayed as shown below.



2. To close the utility dialog window, click the [OK] button or the [Cancel] button or the 'X' button at upper-right corner of the dialog window.

Link Info Pane

[Link Info] pane indicates several communication status about iBurst Modem.



The following descriptions are about each item on the pane.

(1) UTID

UTID is an identifier assigned to the iBurst Modem. This will be used for maintenance support.

(2) Link Status

This indicates current link status between the iBurst Modem and the access point.

Connect : The link is connected.

No Connect : The iBurst Modem is connected with your PC but the link is not connected.

No iBurst Modem : There is no iBurst Modem connected with your PC.

(3) Link Speed

This indicates current bandwidth allocated automatically between the iBurst Modem and a radio base station.

(4) Frame Error Rate

This indicates current Frame Error Rate on the downlink air.

(5) Signal Strength

This indicates current signal strength of the received radio signal. The signal bar indicates the level visually in percentage and the status words are categorized according to the percent level as follows.

No Signal :	0%
Poor :	In the range of 1 to 24%
Fair :	In the range of 25 to 49%
Good :	In the range of 50 to 74%
Excellent :	In the range of 75 to 100%

(6) Current Data Rate

This indicates current throughputs on both directions.

(7) Total Byte Received

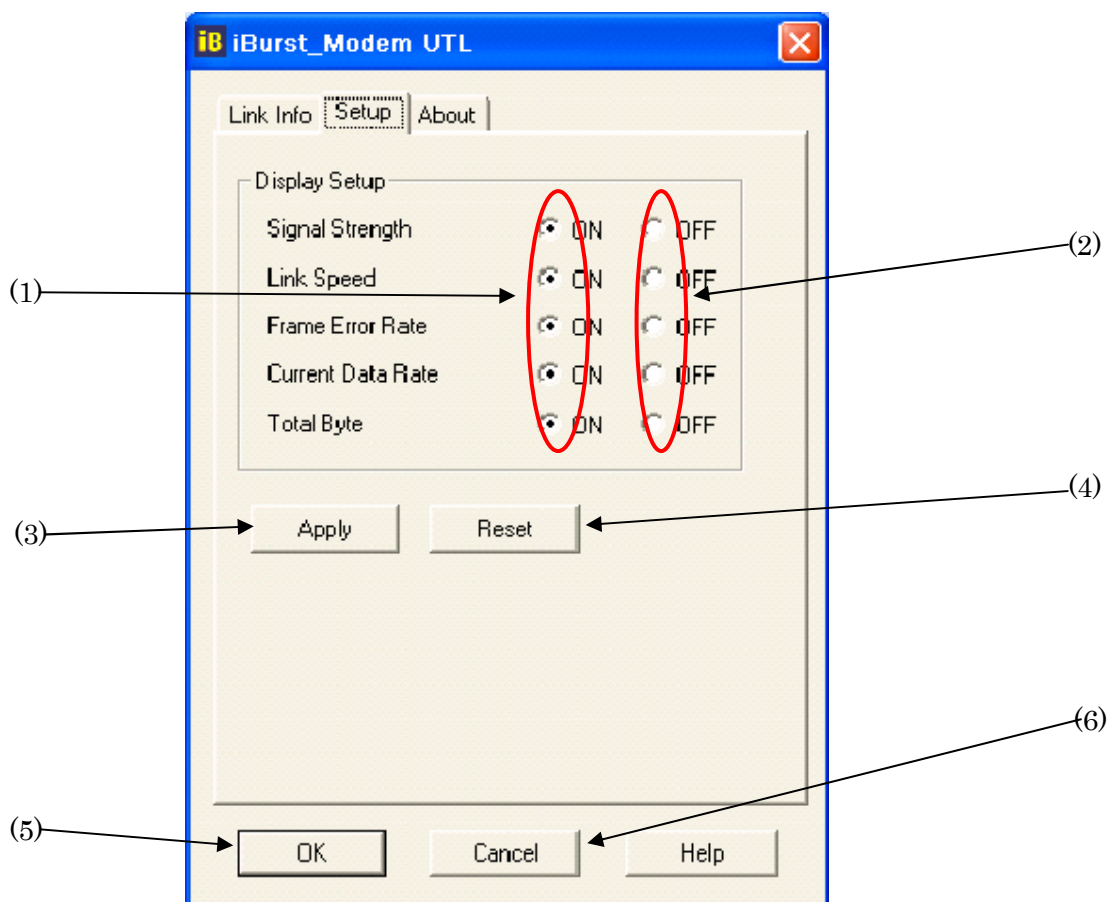
Total Byte Received indicates the total number of bytes received from the access point since the communication link is established.

(8) Total Byte Sent

Total Byte Sent indicates the total number of bytes transmitted to the access point since the communication link is established.

Setup Pane

[Setup] pane can be displayed in the main dialog window by clicking the [Setup] tab. This pane controls enabling/disabling to show each indicator on the [Link Info] pane.

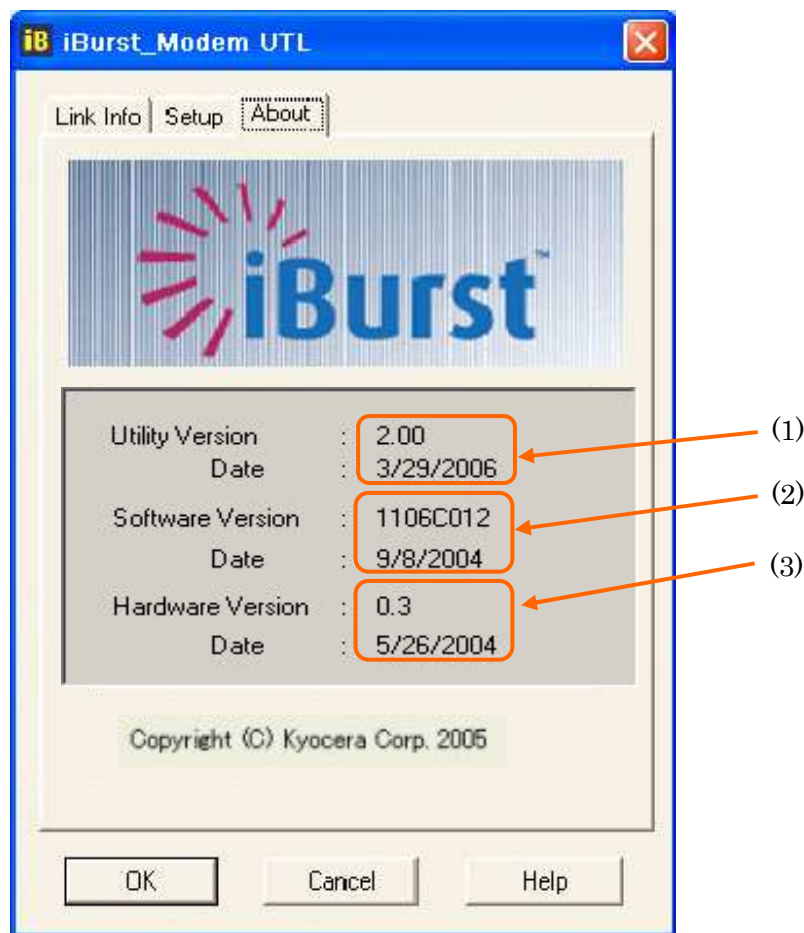


The following descriptions are about each item on the pane.

- (1) Selecting [ON] enables the corresponding indicator on the Link Info pane.
All are [ON] as the default.
- (2) Selecting [OFF] disables the corresponding indicator on the Link Info pane.
- (3) [Apply] button activates every setting above.
- (4) [Reset] button enables and activates all settings above.
- (5) [OK] button activates every setting above and close the dialog.
- (6) [Cancel] button closes the dialog without activation of the settings.

About Pane

[About] pane shows the version information about software, hardware and copyrights.








The following descriptions are about each item on the pane.

- (1) This shows the version number and the build date of this Utility Software.
- (2) This shows the firmware version and the build date of the iBurst Modem.
- (3) This shows the hardware version and the manufactured date of the iBurst Modem.

Icon Display in task tray

When the Utility Software for iBurst Modem is running, an icon of the Utility Software will be displayed in the task tray of the computer monitor according to communication status of the iBurst Modem.

The table below shows icons with status descriptions.

Icon	Status of iBurst Modem
	iBurst Modem is not connected with your PC.
	There is no transmission nor reception on iBurst Modem.
	iBurst Modem is transmitting data.
	iBurst Modem is receiving data.
	iBurst Modem is both transmitting and receiving data.

Pointing on the iBurst icon on the task tray, a balloon indicates **Link Status**, **Total Byte Received**, **Total Byte Sent** and **Signal Strength** as shown below, but depending on the settings on the [Setup] pane.



Using Utility Software for Mac OS X

To open the utility dialog.

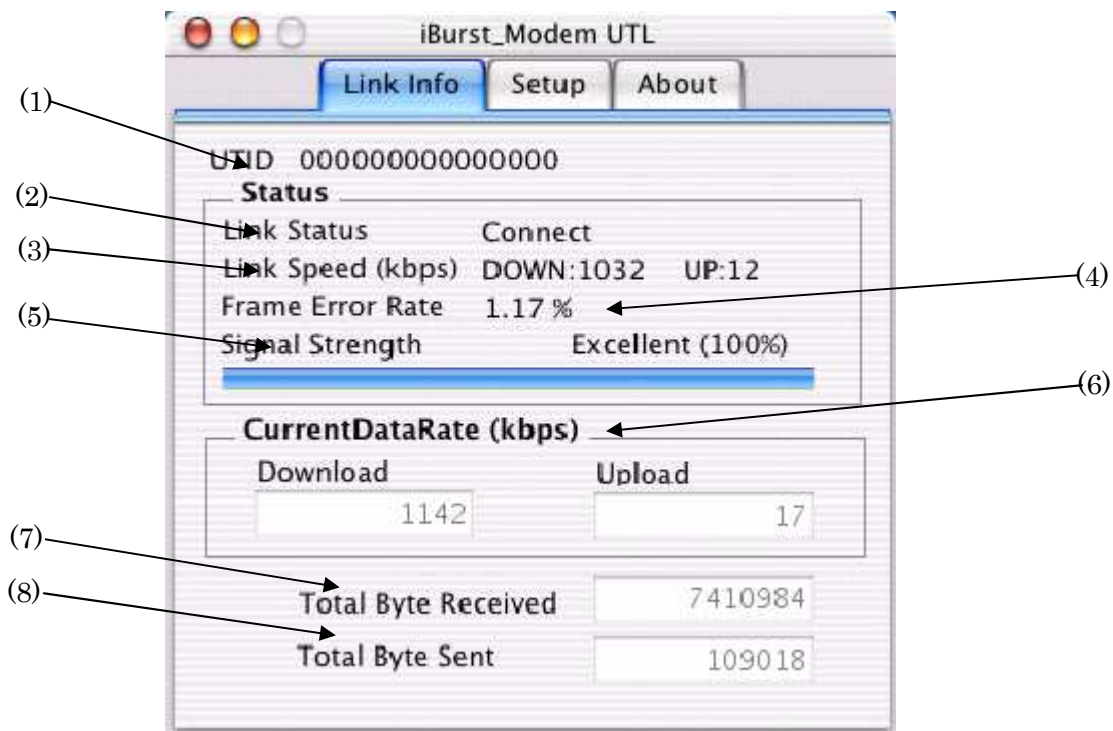
1. Click the iBurst_Modem UTL icon on the Dock.



2. "Link Info" pane of iBurst_Modem UTL dialog appears as shown below.

Link Info Pane

[Link Info] pane indicates several communication statuses about iBurst Modem.



The descriptions in next page are about each item on the pane.

(1) **UTID**

UTID is an identifier assigned to the iBurst Modem. This will be used for maintenance support.

(2) **Link Status**

This indicates current link status between the iBurst Modem and the access point.

Connect : The link is connected.

No Connect : The iBurst Modem is connected with your PC but the link is not connected.

No iBurst_Modem : There is no iBurst Modem connected with your PC.

(3) **Link Speed**

This indicates current bandwidth allocated automatically between the iBurst Modem and a radio base station.

(4) **Frame Error Rate**

This indicates current Frame Error Rate on the downlink air.

(5) **Signal Strength**

This indicates current signal strength of the received radio signal. The signal bar indicates the level visually in percentage and the status words are categorized according to the percent level as follows.

No Signal : 0%

Poor : In the range of 1 to 24%

Fair : In the range of 25 to 49%

Good : In the range of 50 to 74%

Excellent : In the range of 75 to 100%

(6) **Current Data Rate**

This indicates current throughputs on both directions.

(7) **Total Byte Received**

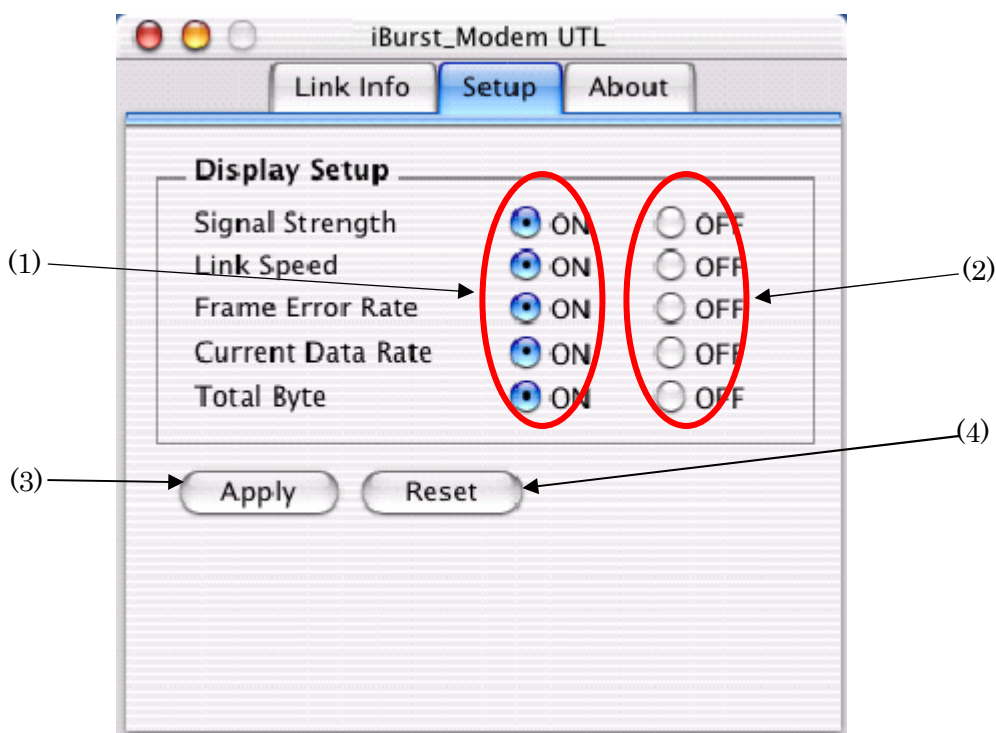
Total Byte Received indicates the total number of bytes received from the access point since the communication link is established.

(8) **Total Byte Sent**

Total Byte Sent indicates the total number of bytes transmitted to the access point since the communication link is established.

Setup Pane

[Setup] pane can be displayed in the main dialog window by clicking the [Setup] tab. This pane controls enabling/disabling to show each indicator on the [Link Info] pane.

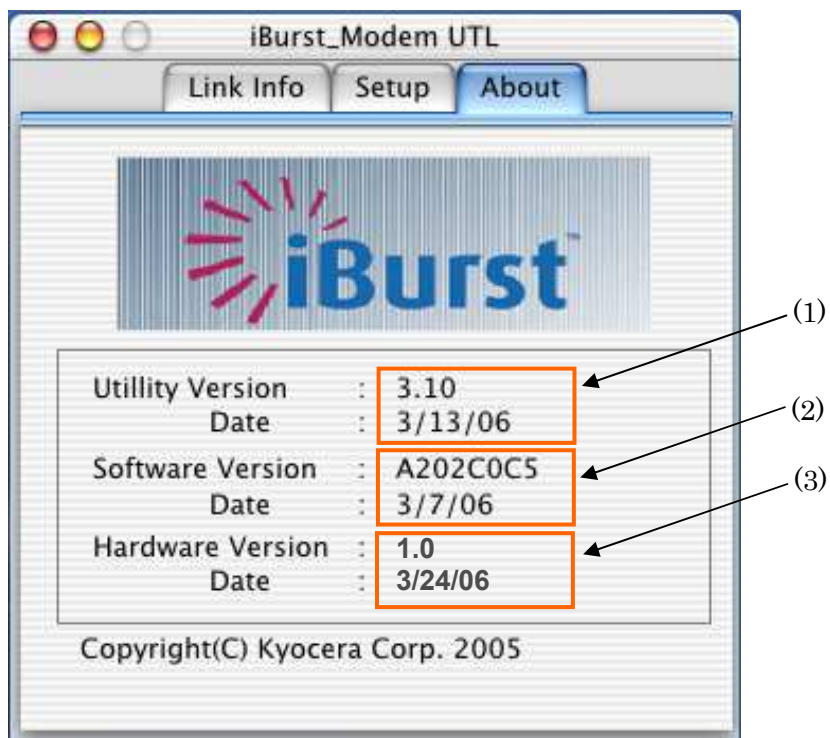


The following descriptions are about each item on the pane.

- (1) Selecting [ON] enables the corresponding indicator on the Link Info pane. All are [ON] as the default.
- (2) Selecting [OFF] disables the corresponding indicator on the Link Info pane.
- (3) [Apply] button activates every setting above.
- (4) [Reset] button enables and activates all settings above.

About Pane

[About] pane shows the version information about software, hardware and copyrights.



The following descriptions are about each item on the pane.

- (1) This shows the version number and the build date of this Utility Software.
- (2) This shows the firmware version and the build date of the iBurst Modem.
- (3) This shows the hardware version and the manufactured date of the iBurst Modem.

Menu Bar

It will be displayed while the iBurst Modem utility is active.



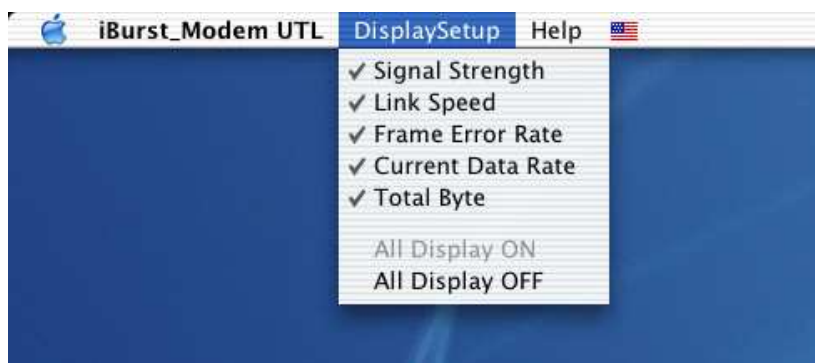
(1) iBurst_Modem UTL menu

The menu is used to quit the iBurst Modem utility or to perform other operations.



(2) DisplaySetup menu

The menu is used to control enabling/disabling to show each indication on the [Link Info] pane. The function is the same as the [Setup] pane of the dialog.



(3) Help menu







The [Help] window will appear when help menu is selected.



Icon Display on the Dock

When the Utility Software for iBurst Modem is running, an icon of the Utility Software will be displayed in the task tray of the computer monitor according to communication status of the iBurst Modem.

The table below shows icons with status descriptions.

Icon	Activities on iBurst Modem
	iBurst Modem is not plugged into the PC Card slot.
	iBurst Modem is plugged ,and Signal Strength is <i>No Signal</i> .
	iBurst Modem is plugged ,and Signal Strength is <i>Poor</i> .
	iBurst Modem is plugged ,and Signal Strength is <i>Fair</i> .
	iBurst Modem is plugged ,and Signal Strength is <i>Good</i> .
	iBurst Modem is plugged ,and Signal Strength is <i>Excellent</i> .

Chapter 4 MTU Optimizer Software & Network Property

This chapter describes the features and usage of the MTU Optimizer Software for iBurst Modem.

MTU Optimizer Software & Network Property

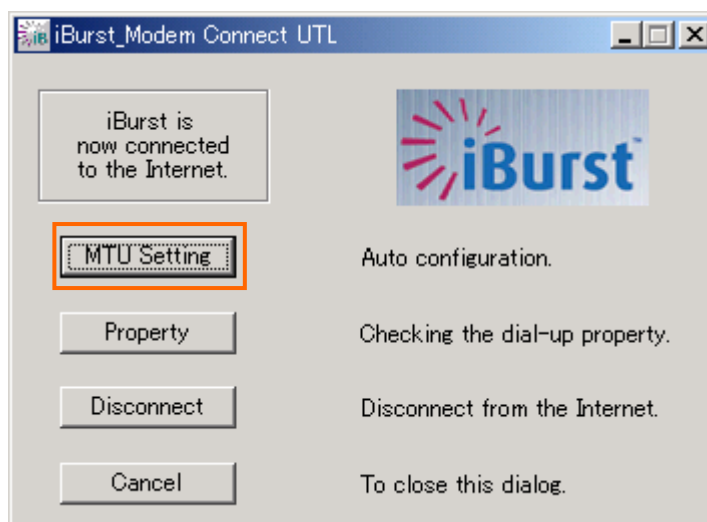
MTU optimizer software measures the optimized packet size between your PC and a HOST. It is recommended to tune MTU size in order to avoid any throughput problem. This function is a part of Kyocera PPPoE dialer and it is available on Windows 98SE, ME and 2000.

NOTE: You need to make a Internet connection through the iBurst Modem prior to start this procedure.

1. While your PC is being connected to the Internet through the iBurst Modem, double click the iBurst connection utility icon.

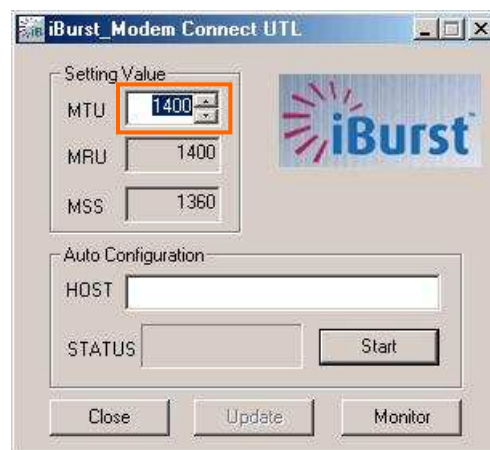


2. When the dialog will appear, click the [MTU Setting] button.



NOTE: 'Property' to open properties of the dial-up connection for iBurst Modem.
'Disconnect' to disconnect from the Internet.
'Cancel' to close the dialog.

3. The [MTU Setting] dialog is as follows.



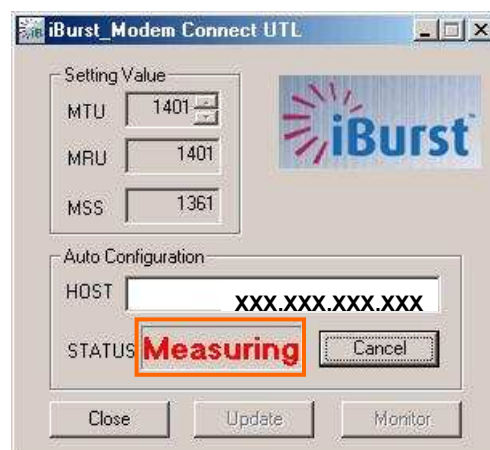
4. There are 2 methods to decide MTU size, i.e. manually or automatically.

5. If you want to change MTU size manually, type a value in the MTU field and click the [Update] button. Your PC may request to restart it.

6. If you want to optimize MTU size automatically,

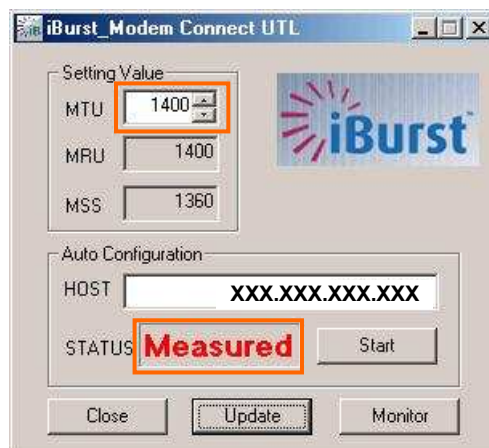
A) type a target URL or an IP address of the HOST, which will be notified by the network operator, and click the [Start] button.

B) The optimizer starts measuring and every value will be varied automatically.

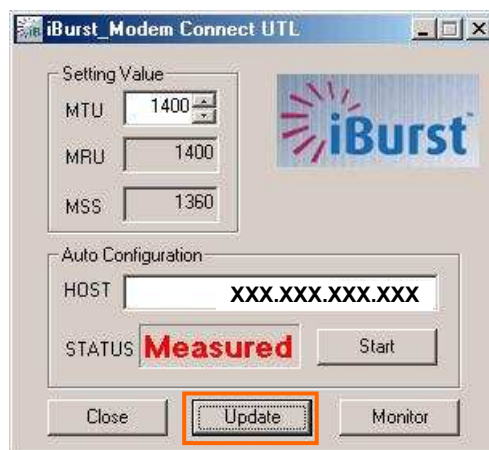


NOTE: 'Cancel' to stop measuring.

- C) The optimizer will finish automatically with a result of the optimized MTU size in the MTU field.



- D) Click the **Update** button to memorize into your PC. Your PC may request to restart it.



NOTE: 'Monitor' to revoke the result and show the current memorized MTU size.

7. Click **Close** to close the dialog.
8. If you updated, you need to restart your PC to take effect.

Chapter 5

Uninstallation

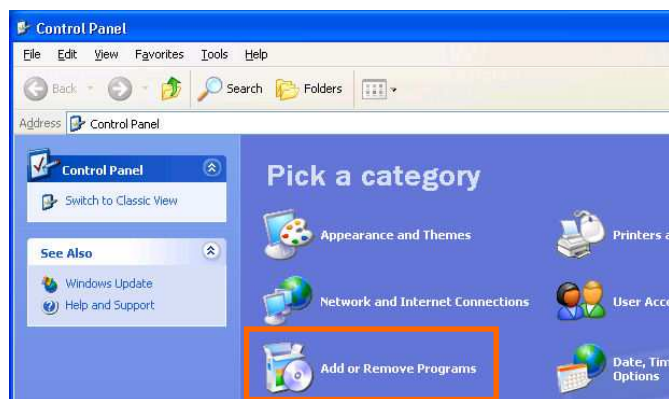
This chapter describes how to uninstall iBurst software.

iBusrt Software Uninstallation

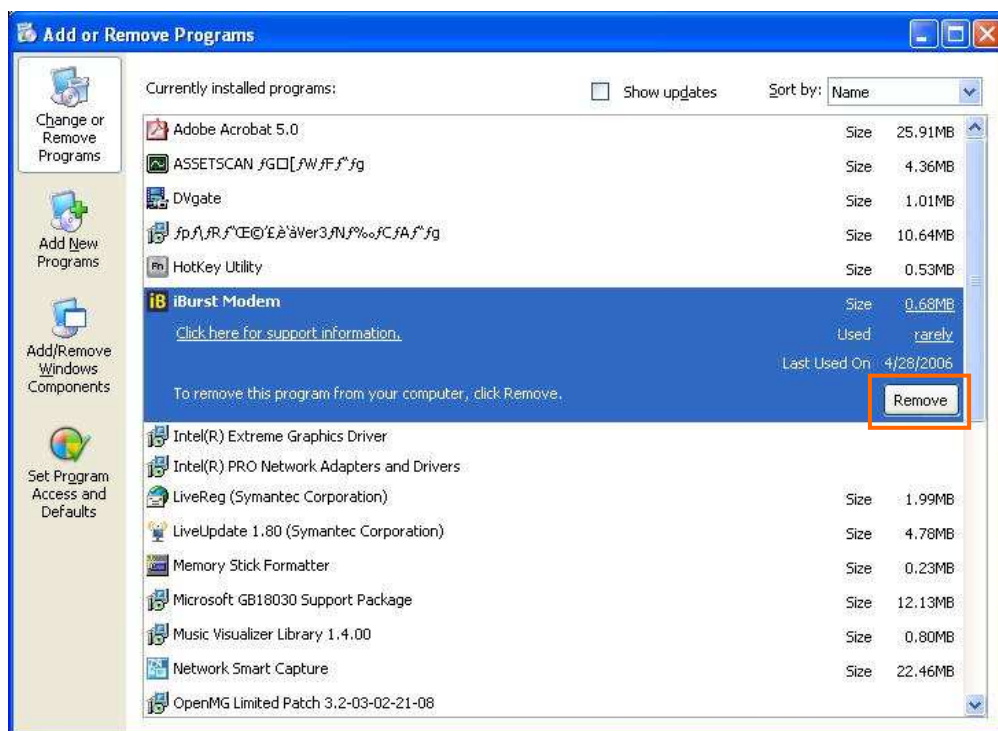
Uninstallation for Windows XP/2000

NOTE: All screen copies in this section are examples on Windows XP.

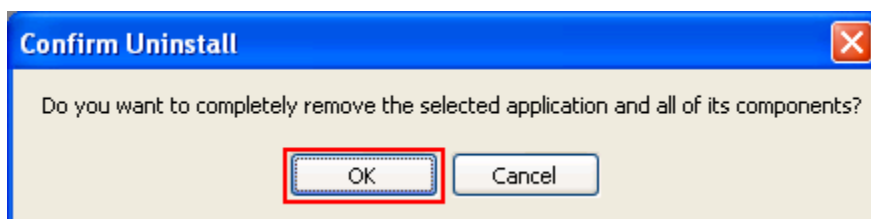
1. Close all programs that are currently running.
2. Remove the iBurst Modem from the computer.
3. Click the [Start] button, followed by selecting [Control Panel] to open Control Panel, and then double click [Add or Remove Programs].



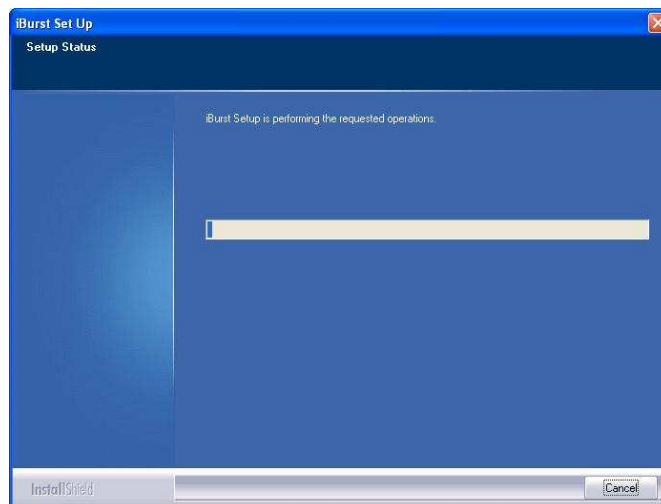
4. Select [iBurst Modem] software, and click the [Remove] button.



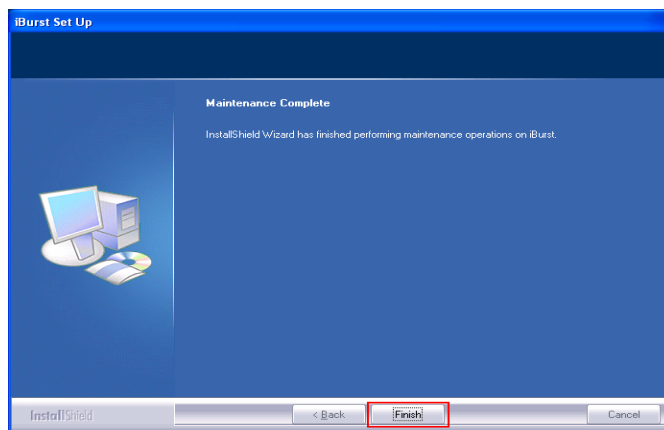
5. Click the **[OK]** button after appearing dialog window as shown below.



6. The following dialog window will appear, and uninstallation of software begins.

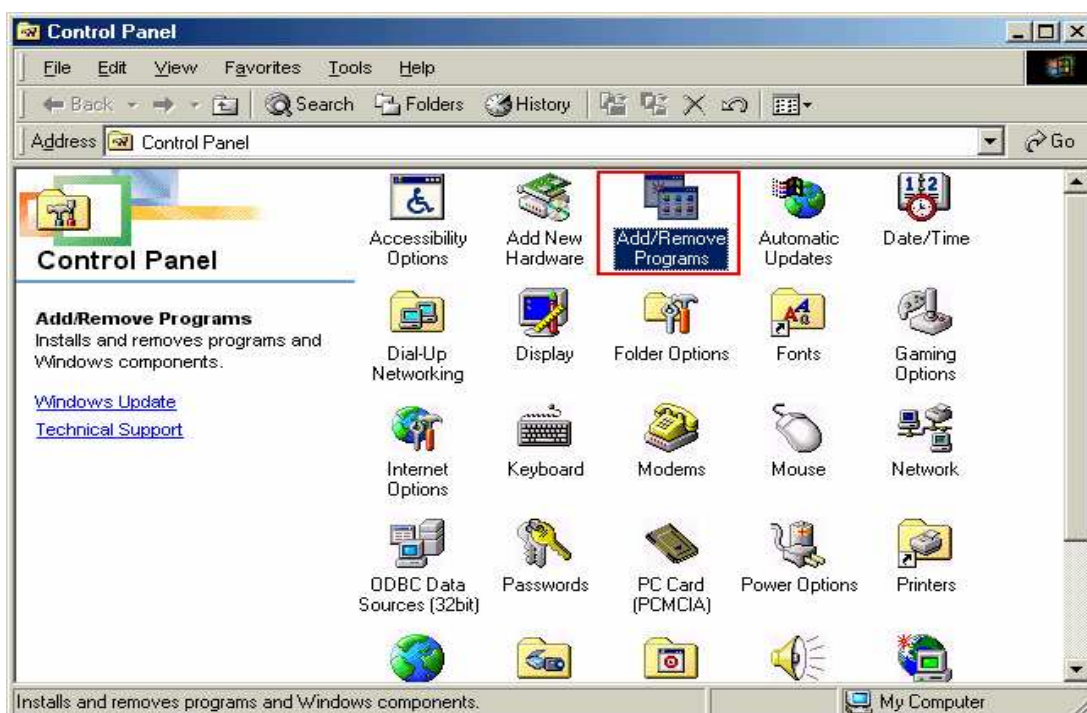


7. Click the **[Finish]** button after appearing dialog window as shown below.

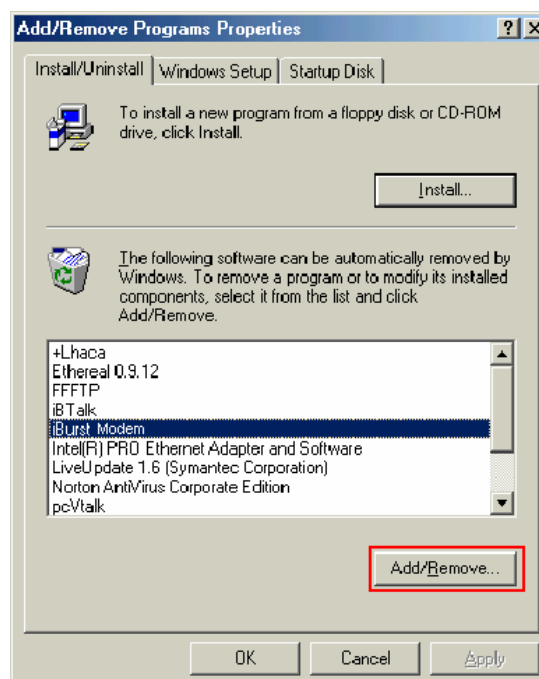


Uninstallation for Windows Me/98SE

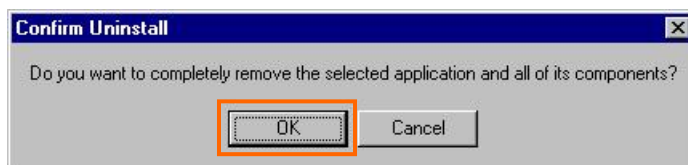
1. Close all programs that are currently running.
2. Remove the iBurst Modem from the computer.
3. Click the [Start] -> [Settings] -> [Control Panel] to open Control Panel as shown below, and then double click [Add/Remove Programs].



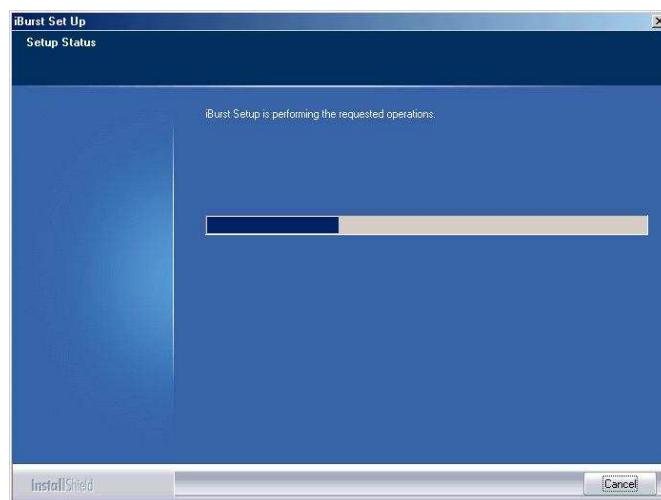
4. Select [iBurst Modem] software, and click the [Add/Remove] button.



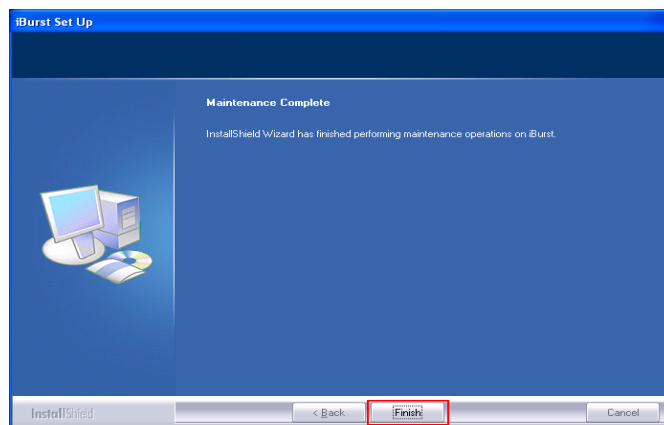
5. Click the **[OK]** button when appearing the message as shown below.



6. The following dialog window will appear, and uninstallation of software begins.

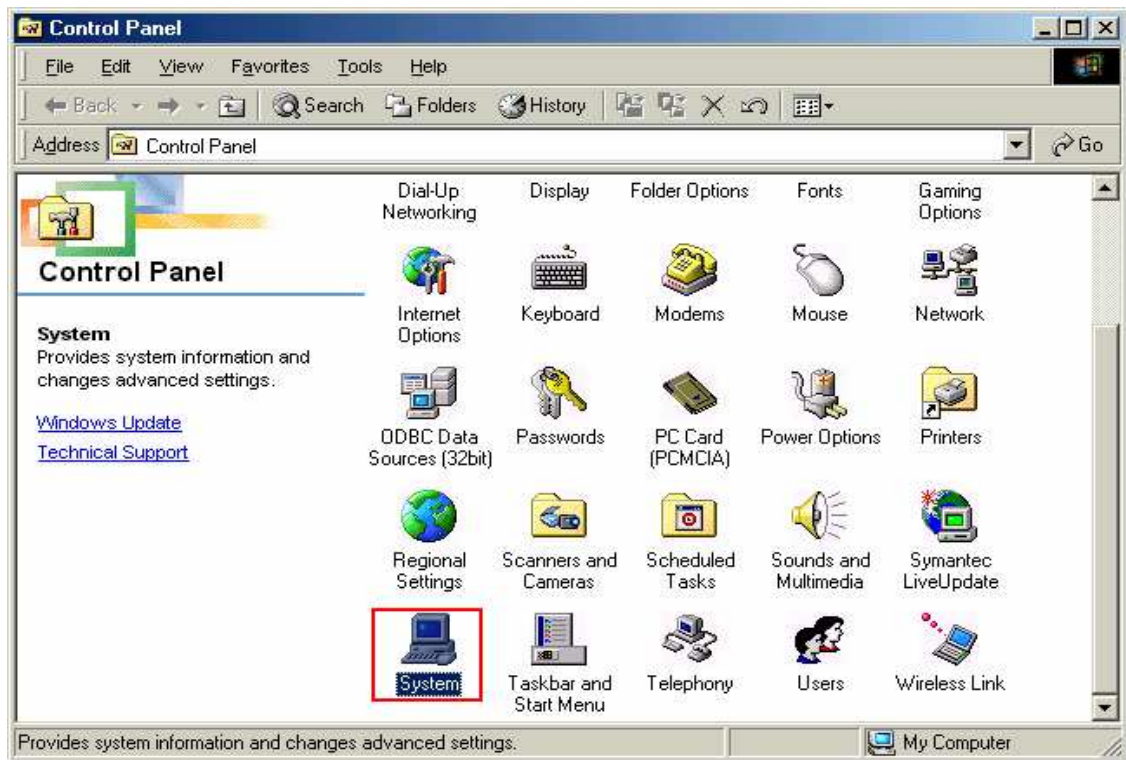


7. Click the **[Finish]** button after appearing dialog window as shown below.

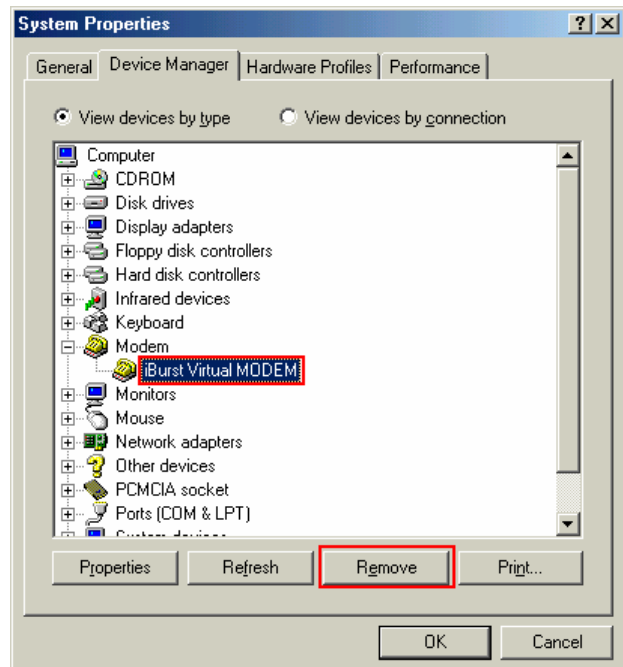


NOTE: In case that the uninstaller shows a selection of restarting your PC, it is recommended to restart it.

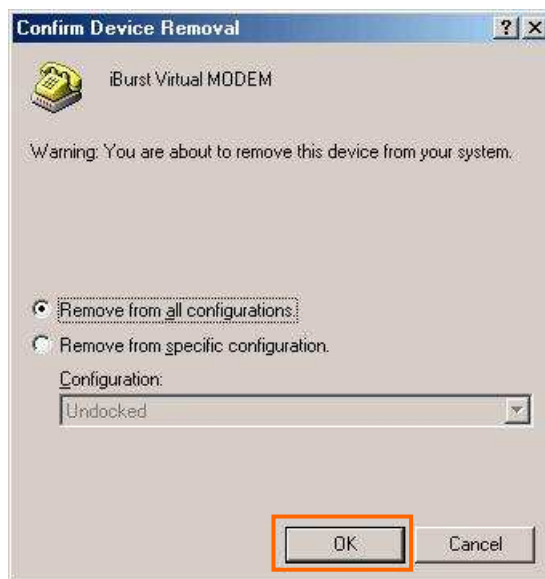
8. Click the [Start] -> [Settings] -> [Control Panel] to open Control Panel as shown below, and then double click [System].



9. Select [iBurst Virtual MODEM] on [Device Manager] tab, then click the [Remove] button.



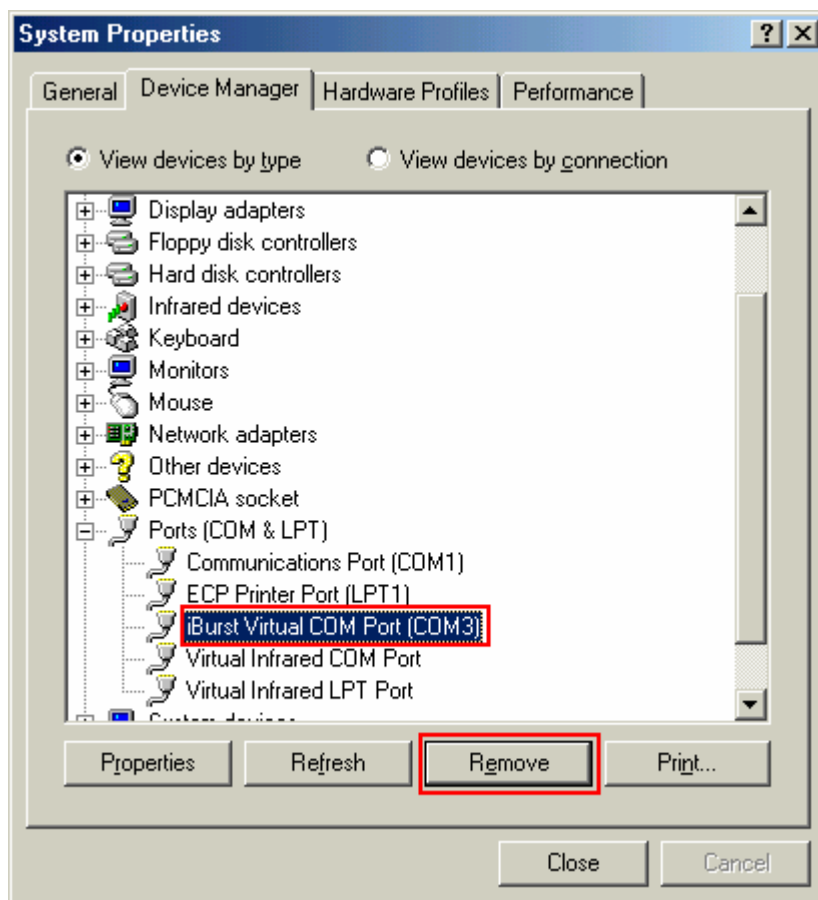
10. Click the **[OK]** button.



NOTE: In case Windows 98SE, no selection is on the dialog.

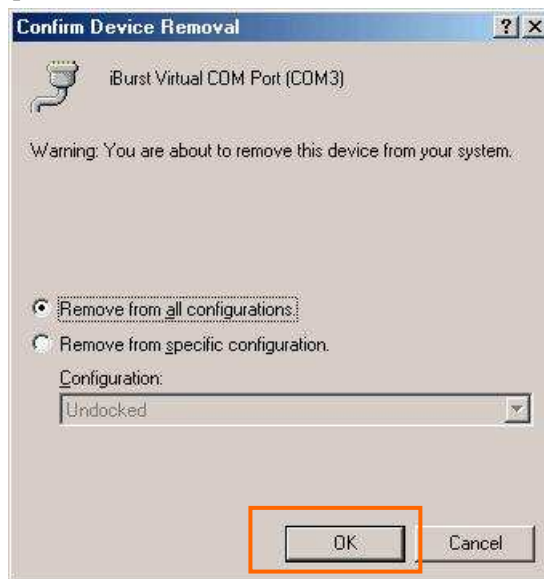
11. Select **[iBurst Virtual COM Port(COMx)]** on **[Device Manager]** tab, then click the **[Remove]** button.

NOTE: The 'X' in "COM x" above is a COM port number assigned automatically. "COM3" in the picture below is an example.



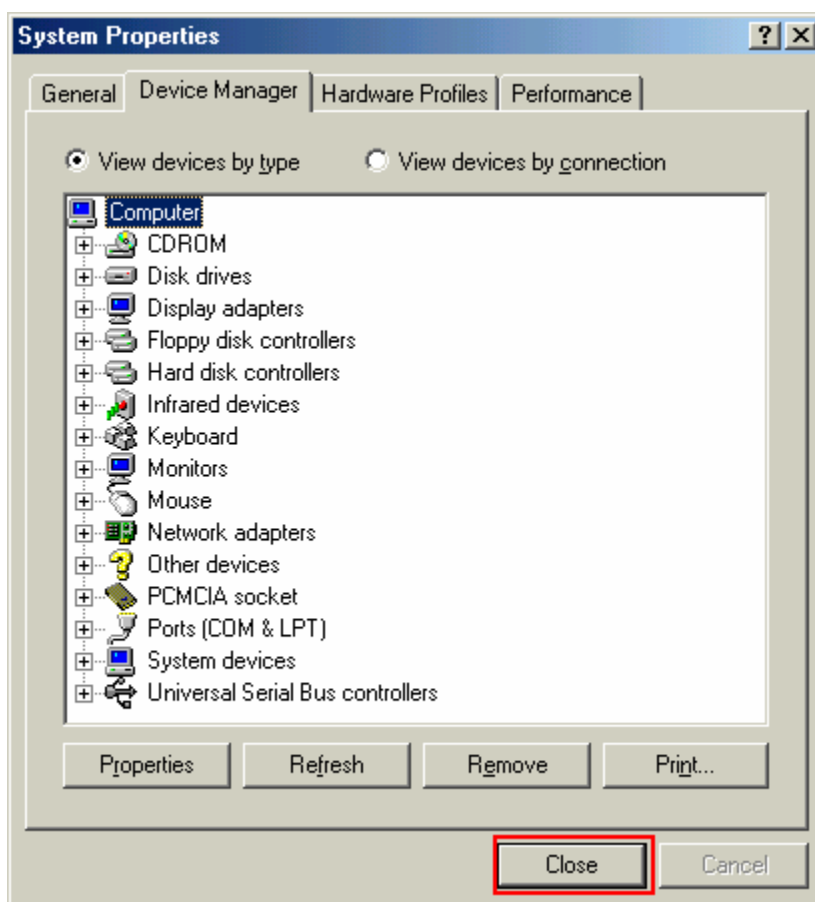
12. Click the **[OK]** button.

NOTE: “COM3” in the picture below is an example.

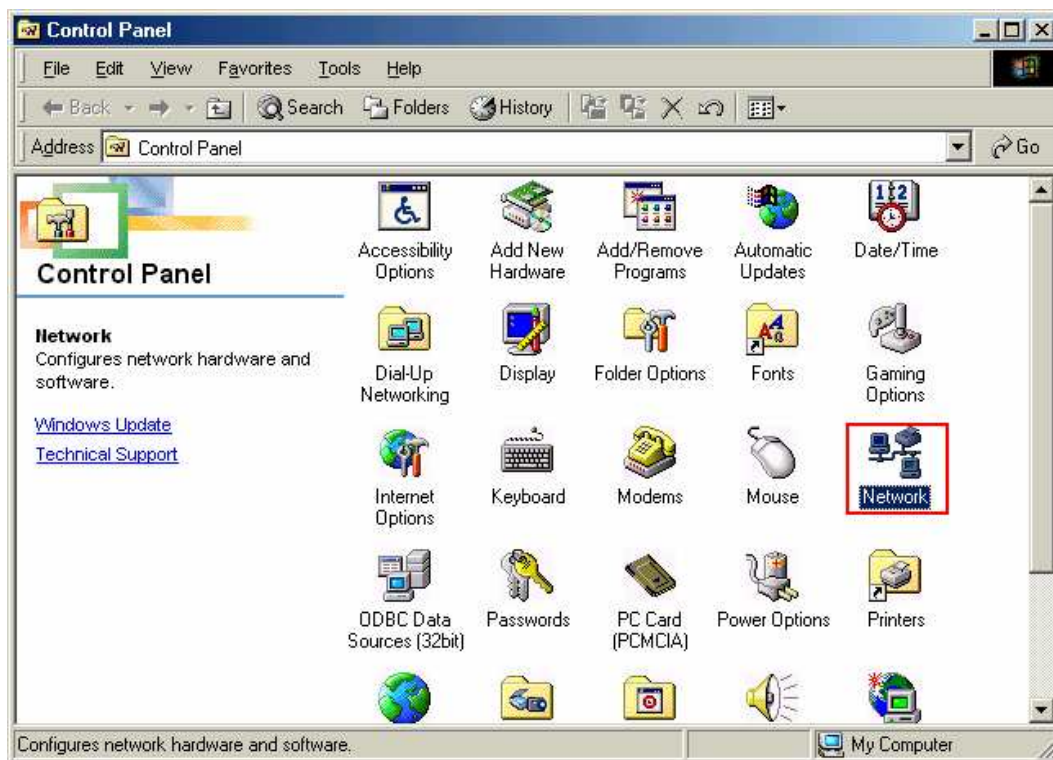


NOTE: In case Windows 98SE, no selection is on the dialog.

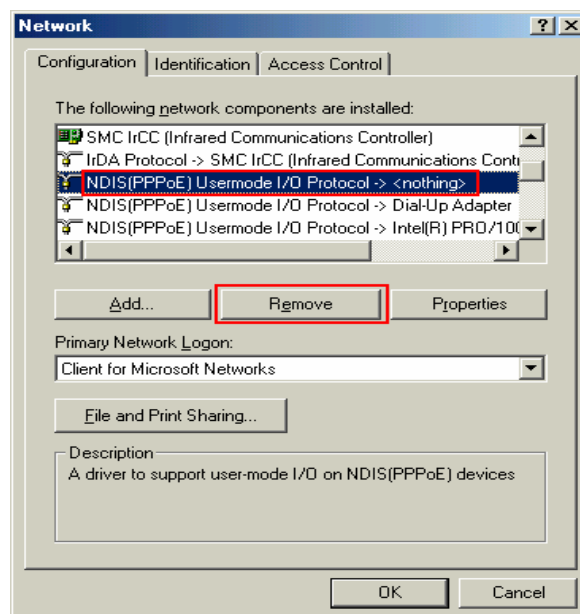
13. Click the **[Close]** button.



14. Click the [Start] -> [Settings] -> [Control Panel] to open Control Panel as shown below, and then double click [Network].

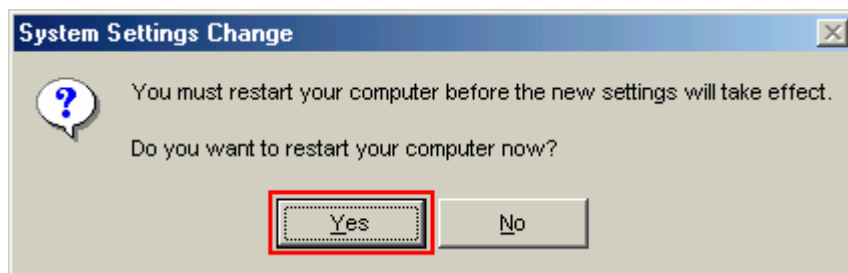


15. Select [NDIS(PPPoE)Usermode I/O Protocol -> xxxxxx] on [Configuration] tab, then click the [Remove] button.(Repeat the above steps if the other [NDIS(PPPoE)Usermode I/O Protocol] components are installed.)



16. Click the [OK] button to close Network dialog.

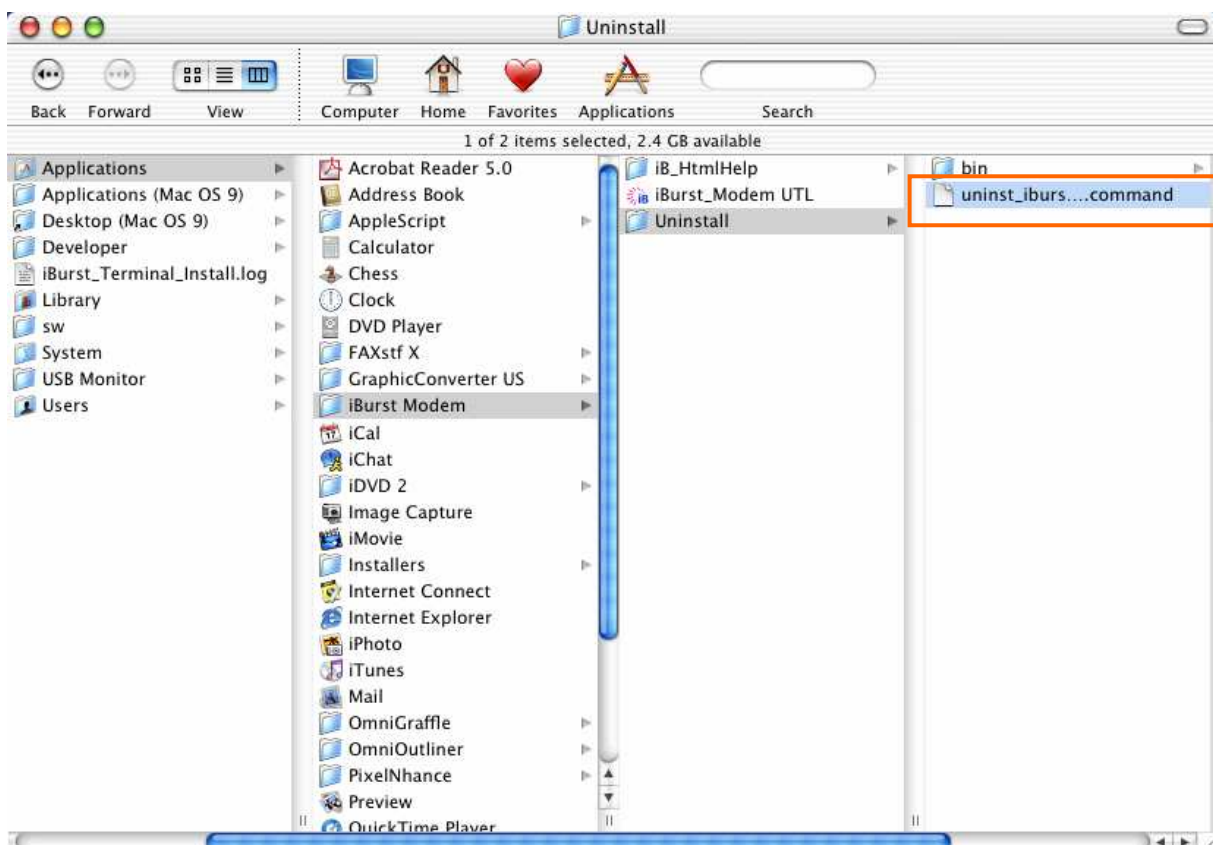
17. The dialog window shown below will appear, click the **[Yes]** button, and restart your PC.



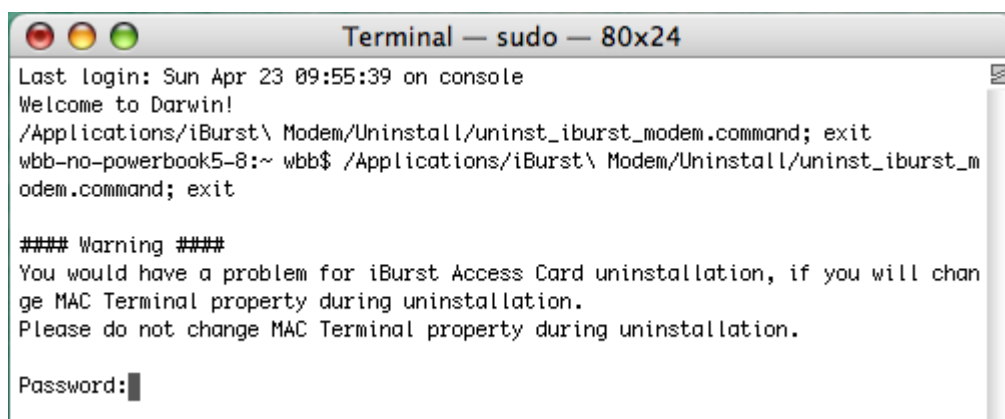
NOTE: If the PC doesn't shutdown itself, try to press Alt+Ctrl+Del keys several times.

Uninstallation for Mac OS X

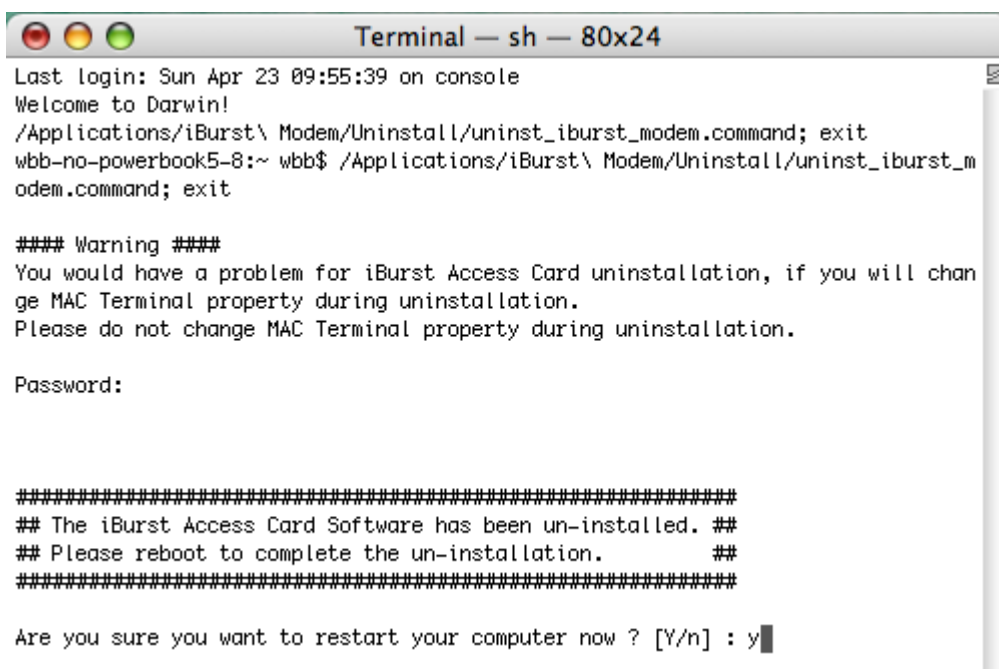
1. Close all programs that are currently running.
2. Remove the iBurst Modem from the computer.
3. Open the folder [Applications\iBurst Modem\Uninstall], then double click the script file [uninst_iburst_modem.command].



4. The terminal window shown below will appear. Type administrator's [password] and press [Enter] key.



5. Press [y] and [Enter] key to restart your computer.



```
Terminal — sh — 80x24
Last login: Sun Apr 23 09:55:39 on console
Welcome to Darwin!
/Applications/iBurst\ Modem/Uninstall/uninst_iburst_modem.command; exit
wbb-no-powerbook5-8:~ wbb$ /Applications/iBurst\ Modem/Uninstall/uninst_iburst_m
odem.command; exit

#### Warning ####
You would have a problem for iBurst Access Card uninstallation, if you will chan
ge MAC Terminal property during uninstallation.
Please do not change MAC Terminal property during uninstallation.

Password:

#####
## The iBurst Access Card Software has been un-installed. ##
## Please reboot to complete the un-installation.      ##
#####

Are you sure you want to restart your computer now ? [Y/n] : y
```

ATTENTION : Don't change any properties of MAC Terminal while uninstallation. Otherwise you would have a problem on uninstalling of iBurst Modem software.

Chapter 6

Trouble shooting

**This chapter describes how to solve the trouble
when you use iBurst.**

Windows

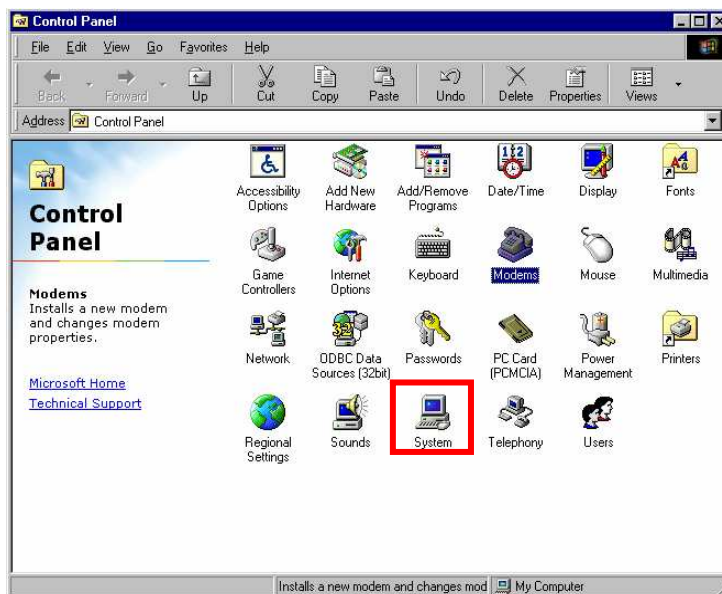
Illegal hang-up when install iBurst Modem.

Windows 98SE may need a couple minutes to shutdown itself, or may hang-up in worst case after iBurst Modem device driver installation.

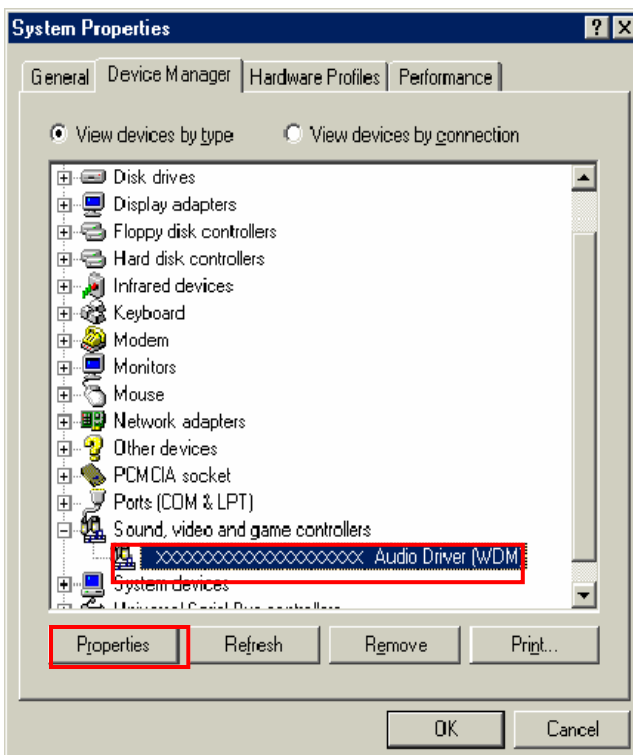
This case is from Windows OS and competition with other devices.

The following gives you the procedure to fix this problem.

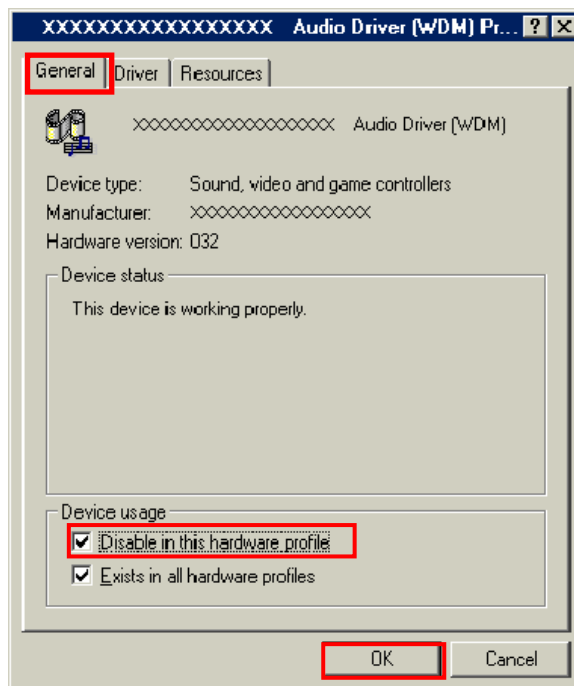
1. Open Network property [Start] -> [Settings] -> [Control Panel] -> [System].



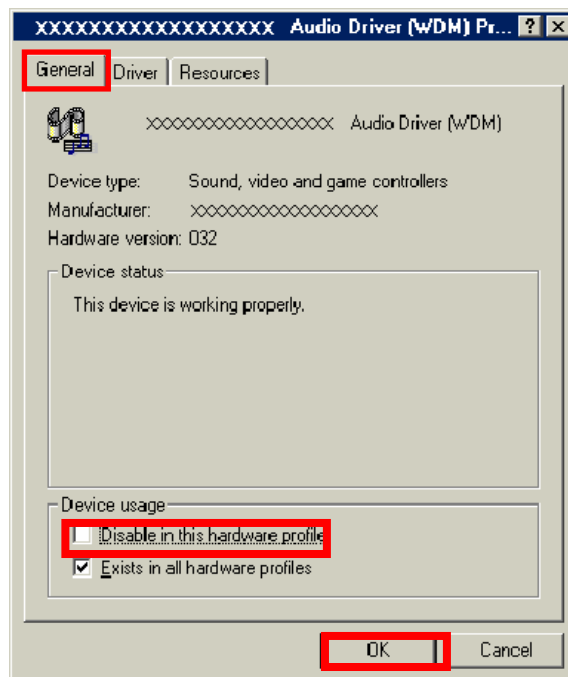
2. Select [Device Manager] tab. Disable sound card device and other which will not effect for Windows performance, i.e. network card and modem.



3. On the [General] tab, check the box labeled the [Disable in this hardware profile], and then click the [OK] button.



4. Plug the iBurst Modem into a PC card slot.
5. On the [General] tab, uncheck the box labeled the [Disable in this hardware profile], and then click the [OK] button.



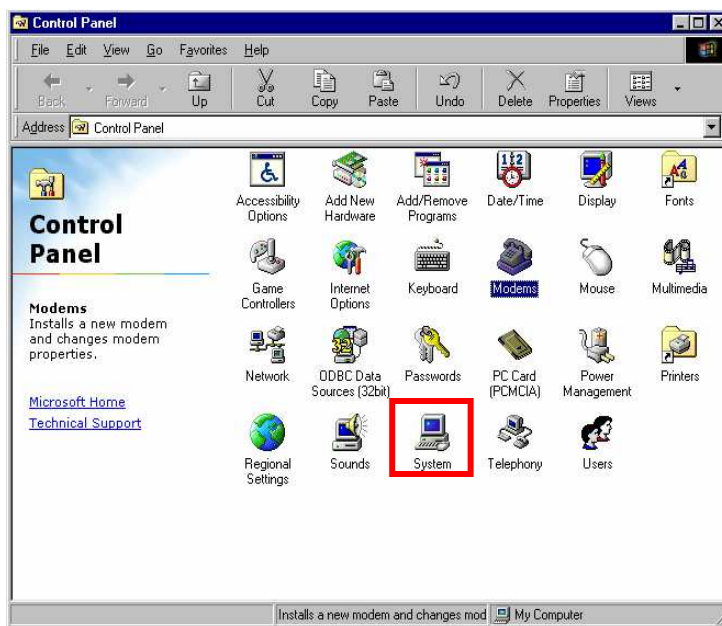
Illegal hang-up when set up dialer

Windows 98SE may need a couple minutes to shutdown itself, or may hang-up in worst case after iBurst Modem Virtual COM Port driver installation.

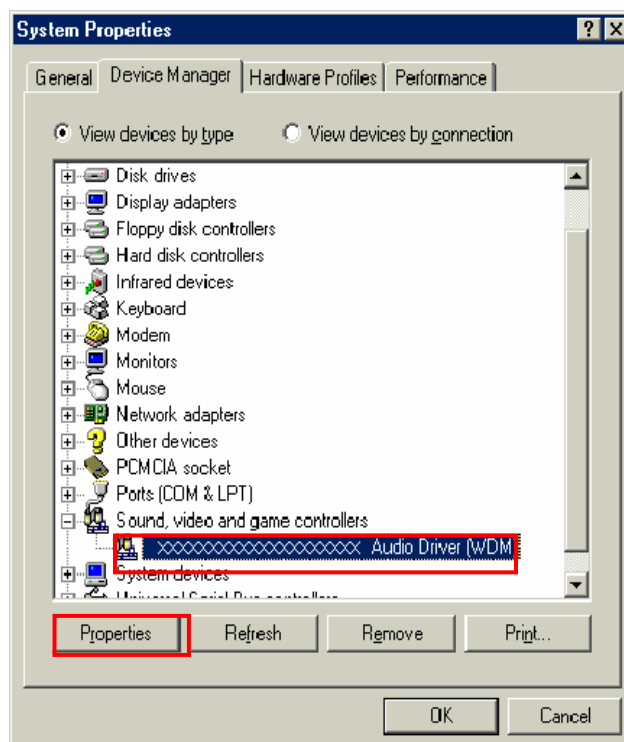
This case is from Windows OS and competition with other devices.

The following gives you the procedure to fix this problem.

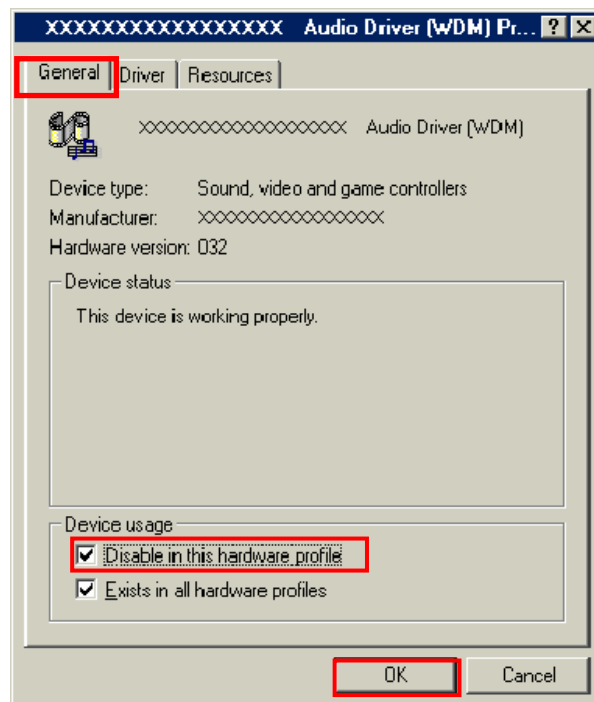
1. Open Device Manager [Start] -> [Settings] -> [Control Panel] -> [System] -> [Device Manager].



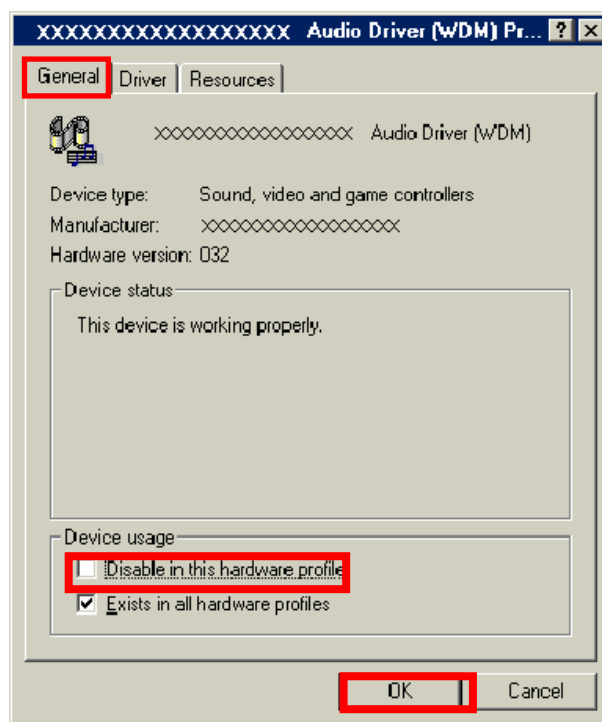
2. Disable sound card device and other which will not effect for Windows performance, ie network card and modem.



3. On the **[General]** tab, check the box labeled the **[Disable in this hardware profile]**, and then click the **[OK]** button.



4. Re-install iBurst Modem Virtual COM Port driver according to installation procedure, chapter 2 "Installation for Windows 98SE" step 19.
5. On the **[General]** tab, uncheck the box labeled the **[Disable in this hardware profile]**, and then click the **[OK]** button.



Mac

Data rate

iBurst Modem would not perform maximum data rate when it connects with Mac PC.

This is obviously caused by Mac OS.

And typical data rate connecting with Mac is 800Kbps at downlink and 240Kbps at uplink.

Chapter 7 Information

FCC Compliance Statement

FCC WARNING

Changes or modifications not expressly approved by the party responsible for compliance could void the user's authority to operate the equipment.

NOTICE

This equipment has been tested and found to comply with the limits for a Class B digital device, pursuant to part 15 of the FCC rules. These limits are designed to provide reasonable protection against harmful interference in a residential installation. This equipment generates, uses and can radiate radio frequency energy and, if not installed and used in accordance with the instructions, may cause harmful interference to radio communications. However, there is no guarantee that interference will not occur in a particular installation. If this equipment does cause harmful interference to radio or television reception, which can be determined by turning the equipment off and on, the user is encouraged to try to correct the interference by one or more of the following measures:

- Reorient or relocate the receiving antenna.
- Increase the separation between the equipment and receiver.
- Connect the equipment into an outlet on a circuit different from that to which the receiver is connected.
- Consult the dealer or an experienced radio/TV technician for help.

FCC RF Radiation Exposure Statement

This transmitter must not be co-located or operated in conjunction with any other antenna or transmitter.

The available scientific evidence does not show that any health problems are associated with using low power wireless devices. There is no proof, however, that these low power wireless devices are absolutely safe. Low power Wireless devices emit low levels of radio frequency energy (RF) in the microwave range while being used. Whereas high levels of RF can produce health effects (by heating tissue), exposure to low-level RF that does not produce heating effects causes no known adverse health effects. Many studies of low-level RF exposures have not found any biological effects. Some studies have suggested that some biological effects might occur, but such findings have not been confirmed by additional research. UTC has been tested and found to comply with FCC radiation exposure limits set forth for an uncontrolled equipment and meets the FCC radio frequency (RF) Exposure Guidelines in Supplement C to OET65. The maximum SAR levels tested

for UTC has been show to be 0.507 W/kg at Body.