

iBurst Terminal User's manual



Approved	Checked	Designed
Koyama	Yamamoto	Hirao

Reference:	Q38T-EE-001
Revision:	1.01
Date:	June.08.2006

iBurst Terminal, Desktop Model (UTD) / USB Model (UTU), Manual

Revision Record

Revision	Author	Date	Detail
1.00	Hirao	May.10.2006	First Release
1.01	Miyasaka	June.08.2006	Correct some writings

CONTENTS

Safety Precautions on iBurst Terminal.....	4
Chapter 1 Introduction	8
Components List	9
Pictures of Accessories	9
Outlook of iBurst Terminal	10
Indicators	11
Requirements on your PC	12
Outlook to use the iBurst Terminal.....	12
Chapter 2 Setup Procedure.....	13
iBurst Software Installation	14
Installation for Windows XP	14
Installation for Windows 2000	17
Installation for Windows Me	20
Installation for Windows 98SE.....	39
Installation for Mac OS X.....	59
Connection Establishment	63
Connection Establishment for Windows XP	63
Connection Establishment for Windows 2000/Me/98SE.....	68
Connection Establishment for Mac OS X	70
Chapter 3 Utility Software	74
Using Utility Software.....	75
Using Utility Software for Windows.....	75
Using Utility Software for Mac OS X	81
Status Indication over Ethernet	88
Chapter 4 MTU Optimizer Software & Network Property.....	93
MTU Optimizer Software & Network Property.....	94
Chapter 5 Uninstallation.....	97
iBurst Software Uninstallation.....	98
Uninstallation for Windows XP/2000	98
Uninstallation for Windows Me/98SE	101
Uninstallation for Mac OS X	108
Chapter 6 Trouble shooting.....	110
Windows	111
USB connection with Windows Me/98SE	111
Illegal hang-up when install iBurst Terminal.	114
Illegal hang-up when set up dialer.....	116
PC hang-up when eject iBurst Terminal from Win98 USB port.	118
Mac	119
Data rate.....	119
Chapter 7 Information	120
FCC Compliance Statement.....	121
FCC RF Radiation Exposure Statement.....	121

Safety Precautions on iBurst Terminal

- Things you must know
 - When using the product, use it correctly according to the safety precautions.
 - The product uses particular radio frequency band tuned for the network operator.
 - The safety precautions, hardware, software, and the design of the product may be changed in the future without any announcement to the customers.

- About use restriction
 - The product is designed as an OA apparatus for home use. Please use it neither in the medical apparatus directly to affect a human life, nor the system of which very high reliability is required.
 - Do not use the product in the zone where the wireless machines are forbidden, such as an airplane and a hospital. An electric device and medical apparatus are affected and it becomes the cause of the accident.

- About Qualification
 - Our company does not take any responsibility about the damage produced by use under the conditions such as natural disasters, earthquake, flood, fires, misuse by intent or carelessness or other than the responsibility of our company.
 - Our company does not take any responsibility about the damage produced by external factor, failure, malfunction, and fault of product, such as loss of enterprise profits, enterprise discontinuation, change and disappearance of the contents of memory etc.
 - Our company takes no responsibility about the damage produced by not keeping the written contents of an owner's manual.
 - Our company takes no responsibility about the damage produced from incorrect operation in combination with the connection apparatus and software in which our company is not participating etc.

-
-
- iBurst™ is a registered trademark of ArrayComm, Inc.
 - Mac OS X is a registered trademark of Apple Computer, Inc.
 - Windows is a registered trademark of Microsoft Corporation.
 - In addition, the name of the software carried in this document and peripheral equipment is each company's trademark, or a registered trademark.

- For your safety

----- **Danger** -----

(If used improperly, may cause death or serious injury.)

- Do not use with an abnormal condition, such as with emission of smoke or odor. It may cause fire or electric shock.
- Do not insert metal or flammable materials into the product interior through the air vents. Pull out power plug from the outlet in case that foreign material into the product interior. It may cause fire or electric shock.
- Do not disassemble or remodel the product. It may cause fire or electrical shock.
- Do not use or place the product at places with high humidity such as in the bath room or near the humidifier. It may cause fire or electric shock. And do not touch the product with wet hands.
- Do not use the product with power supply other than AC100 to 240V. It may cause fire or electric shock.
- Do not plug too many leads into a single socket with extensions such as table taps, divided outlets, and divided sockets. It may cause fire or electric shock. Moreover, make sure that the total current does not exceed the capacity of the power supply. Otherwise, may cause fire or electrical shock.
- Do not damage, break, modify, bend, pull, twist, or bundle the AC cord. In addition, if a heavy material is placed onto the cord or it is heated, the cord may break and cause fire or electric shock.
- Securely insert the plug into the outlet. If a metal object edges the teeth of the plug, it may cause fire or electric shock. When pulling out the plug from the outlet, be sure to hold onto its head. Pulling the cord can damage itself.
- When you change the installation place of the product, pull out the plug from the outlet and confirm that PC is completely separated from it. Otherwise, the cord may be damaged and cause electric shock or fire.
- Before inserting the plug into the outlet, check that there is no dust on its edge and head. As dusts can easily enter between the plug and the outlet, they may cause fire or electric shock. Pull out the plug from the outlet, at least once in a half year or a year, and clean/maintenance.
- Use the AC/DC adapter enclosed with the product. Usage of other AC/DC adapters may cause fire or electric shock.
- Do not place things or put cloth on the top of the plug. It may heat and break the plastic and/or the rubber, causing fire or electric shock.

----- **Warning** -----

(If used improperly, may cause disability or physical damage.)

- Do not give a shock strong against the product, such as dropping and throwing. It becomes the cause of failure. Moreover, do not ride on the product. It may become the cause of an injury.
- Do not put the product under direct sunshine or near equipment with high temperature such as a stove and a heater. It may raise the temperature of the interior and cause fire.
- Do not put the product at places with an extreme fluctuation of temperature, such as near the air conditioner or a heater. The dew condensation may occur in the interior and cause fire, electrical shock, and malfunction.
- Do not put the product at places with oil and steams such as in the kitchen. In addition, do not put it at dusty places and places where metal powder and toxic gas occur. It may cause fire or electric shock.
- Do not place the product on unstable places such as on an unsteady desk or slanted surfaces. In addition, do not put any object on the product. It may loose balance and tumble, or fall and cause injury.
- When the thunder occurs in near, do not use the product and its peripheral equipment. It may become the cause of an electric shock.
- If the air vents are blocked, the interior may be heated and cause malfunction. Please do not use the products in the following manners;
 - Put on carpet or bedclothes.
 - Cover with tablecloths.
 - Put at places with bad ventilation, such as on a book shelf, in the drawer, or in the closet.
- If suspending the use for a long time, pull out the plug from the outlet.
- Do not use the AC cord with an extension cord. It may cause fire.
- For maintenance, pull out the AC plug from the outlet for safety. Do not wipe the product with benzene, thinner, or alcohol. It may cause the product to decolorize or deform. If the product be stained, put some neutral detergent on a dry cloth and wipe gently.
- Do not connect electricity supplied LAN cable to the product. It may cause smoke or fire.
- Do not touch the connector pins directly with your hands. Static electricity may affect the components. As static electricity is created from both the cloth and the human body, before putting or removing the product, release static electricity by touching a metal object such as a small cabinet.
- Do not use it in the intense place of vibration. It becomes the cause of failure.

----- **Caution** -----

(If treated improperly, the equipment may not perform or work properly.)

- Do not put the product at low temperature. The product may not function properly.
- Do not put the product on the top of magnetic objects and places where electromagnetic waves occur. This includes electrical appliances, AV, and OA (microwave oven, speaker, TV, radio, fluorescent light, inverter air conditioner, and electric kitchen appliances). The product will not be able to make communication properly if effected by magnetism or electronic noise. Putting the product near TV or radio may cause RF receive error.
- The product lifetime may shorten if used at places with hydrogen sulfide such as at a hot spring.
- Data communication will be disabled or a data file may corrupt if the PC is turned off or the product is separated from the PC during the communication. Important data must be verified against the original data.
- For fixing the product, use the enclosed fixture.
- When connecting the product onto PC, use the enclosed USB cable or LAN cable.
- Both a USB and an Ethernet interface cannot be used simultaneously in case a UTD model.
- When using UTD model, Please put the antenna at vertical position as shown in the below diagrams so that the unit could acquire proper antenna characteristics.



Chapter 1

Introduction

This chapter describes what should be confirmed before using iBurst Terminal.

Components List

The table below shows the list of components. Please confirm items in the package.

UTD model

Component	Notes	Q'ty
iBurst Terminal	Unit of UTD model Refer to the pictures shown in next page.	1
AC/DC Adapter	Input: 100 - 240V AC/ 50 - 60Hz/ 300mA Output: 9V DC/ 1.2A Cable Length of output side: 2m	1
Power Cable	Length: 2m	1
USB Cable	Type: USB1.1 Length: 1m	1
10-Base-T Ethernet Cable	Type: Straight through/ Category 5 Length: 2m	1

UTU model

Component	Notes	Q'ty
iBurst Terminal	Unit of UTU model Refer to the pictures shown in next page.	1
USB Cable	Type: USB1.1 (Mini B for UTU side) Length: 1m	1

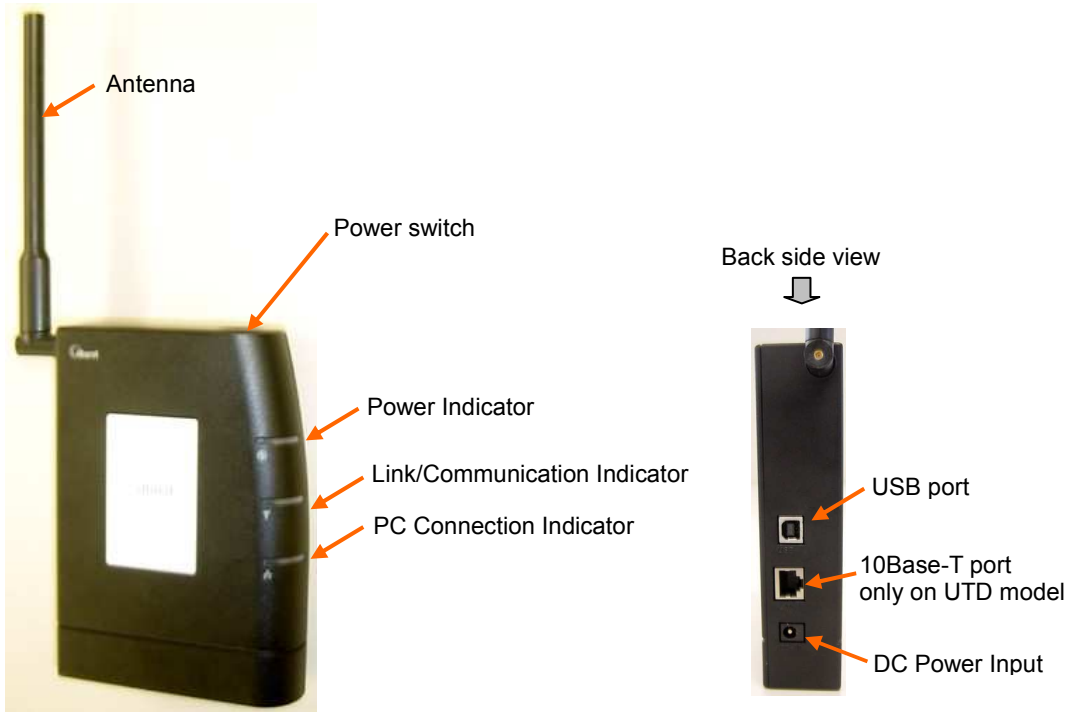
Pictures of Accessories

AC/DC Adapter



Outlook of iBurst Terminal

UTD model



UTU model



Indicators

The table below describes meaning of each indicator.

Indicator	State	Meaning
Power Indicator	OFF	Turned OFF
	Blue	Turned ON
	Blinking	Fault
Link/Communication Indicator	OFF	Turned OFF
	Amber	No signal receiving
	Yellow	Weak signal receiving Blinking when communicating.
	Green	Strong signal receiving Blinking when communicating.
PC Connection Indicator (Only on UTD model)	OFF	Any port not active
	Amber	USB port
	Green	10Base-T port

Requirements on your PC

- PC/AT Compatible PC with WindowsXP/2000/Me/98SE; or version 10.1.5 or later version of Mac OS X except Mac Intel model.

- 1 USB1.1 port or a later version of USB port.

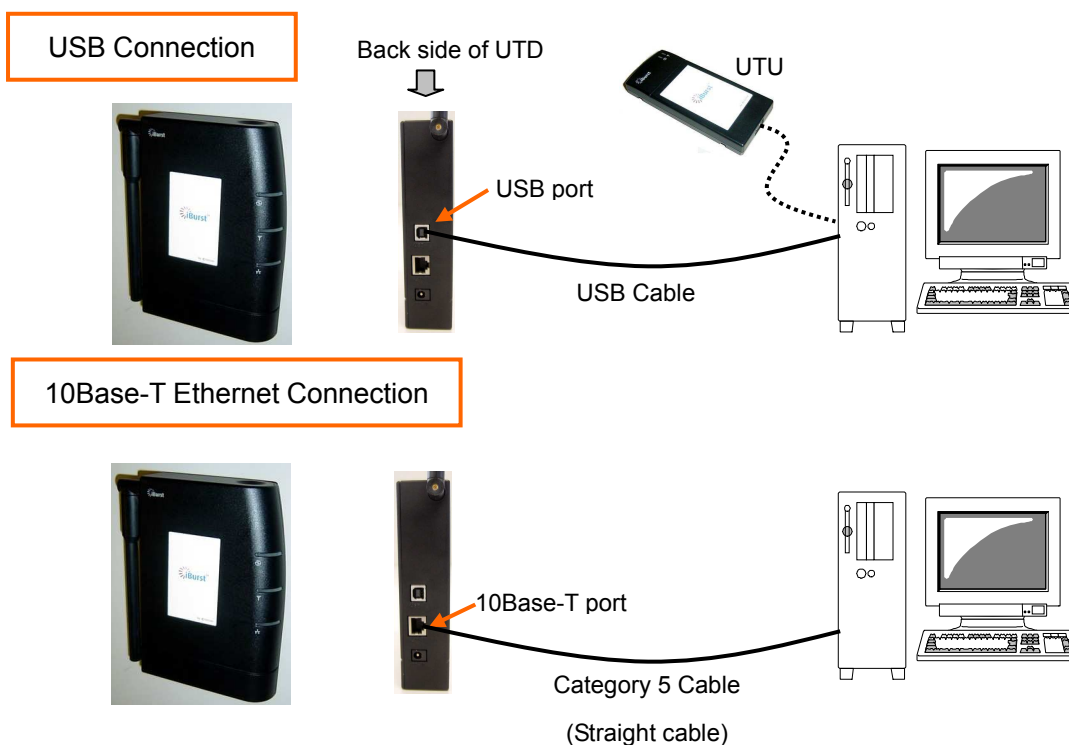
NOTE: In case of using USB connection.

- 1 10Base-T Ethernet port or compatible.

NOTE: In case of using 10Base-T Ethernet connection with a UTD model.

Outlook to use the iBurst Terminal

A UTD model has 1 USB port and 1 10Base-T Ethernet port and a UTU model has only 1 USB port. The USB port, or 10Base-T Ethernet port, shall be connected with your PC. Before connecting the USB interface, you have to install iBurst software which includes device drivers. If you want to utilize 10Base-T connection, you don't have to install the software in case Windows XP or Mac OS X. Please read through every sections related with the operating system for details.



Chapter 2

Setup Procedure

This chapter describes how to install iBurst software, then guides you how to make a network connection so as to use data communication service.

iBurst Software Installation

This section shows the procedure to install iBurst software on your PC for utilizing iBurst Terminal. The procedure shall be done once before using it.

Installation for Windows XP

NOTE:

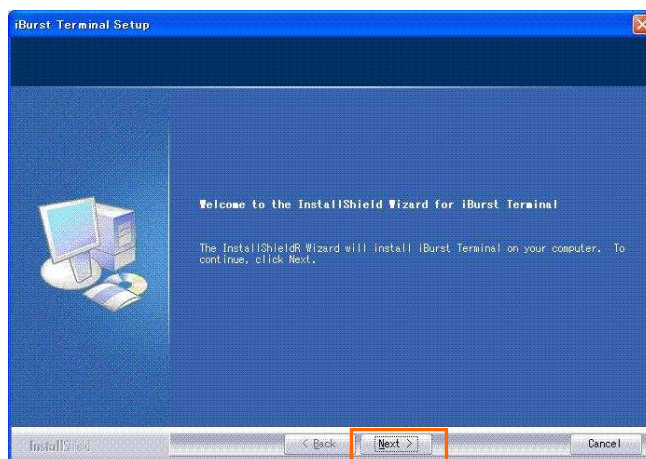
If you are going to connect the iBurst Terminal with your PC only through an Ethernet cable, not through a USB cable, you don't need to install/uninstall any iBurst software. In such case, you can skip this section and you need only to create a dial-up connection setting described at from page 62. You can see indications of the iBurst Terminal over Ethernet. See page 87 for the method.

1. Make sure to disconnect the iBurst Terminal with your PC.

ATTENTION:

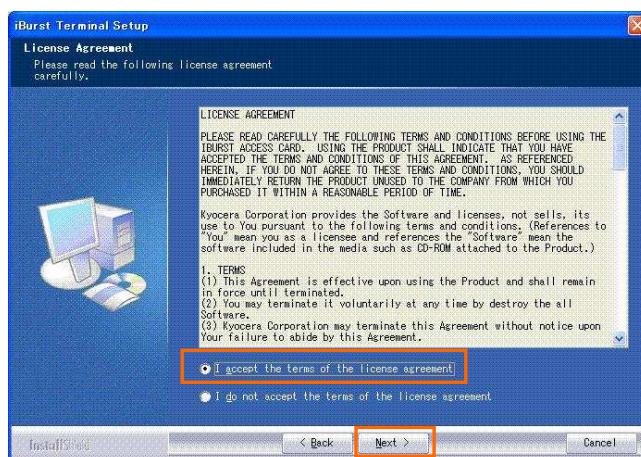
Don't connect the iBurst Terminal with your PC through a USB cable until completion of installation.

2. Turn your PC on.
3. Insert the Software Utility CD provided by the network operator into your CD-ROM drive; or execute the appropriate installation software.
4. iBurst Terminal Setup starts. Click the [Next >] button.



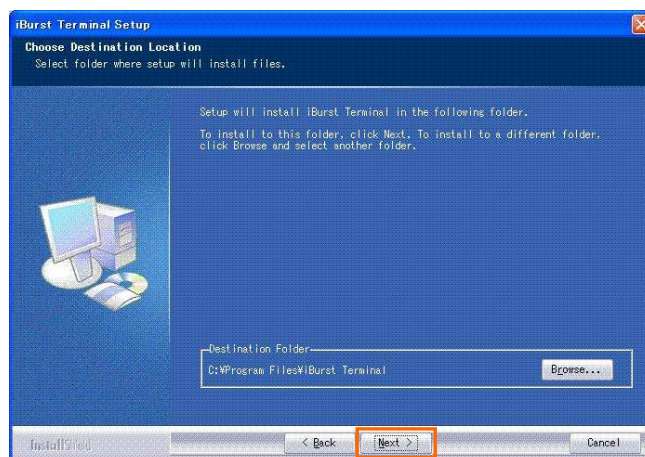
iBurst Terminal, Desktop Model (UTD) / USB Model (UTU), Manual

5. Select [I accept the terms the license agreement], click the [Next >] button.

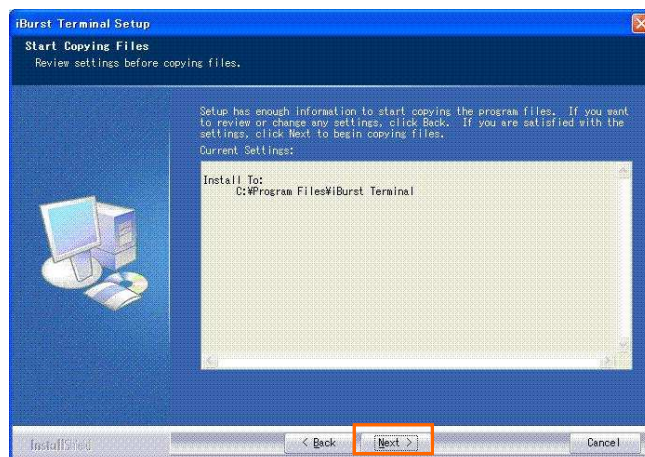


6. Click the [Next >] button after appearing dialog window as shown below.

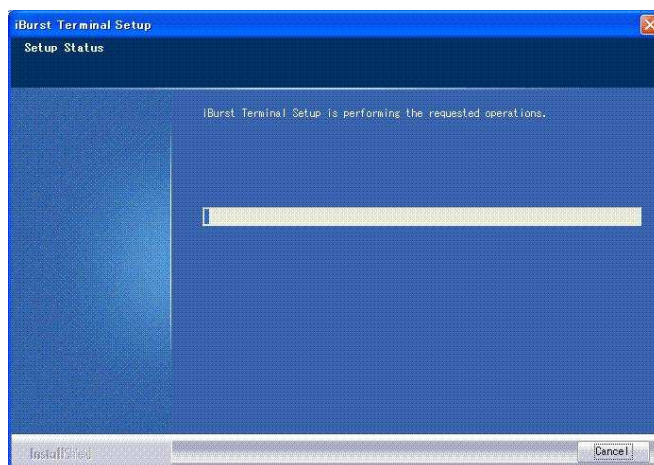
NOTE: To install to a different folder, click [Browse...] and specify another folder.



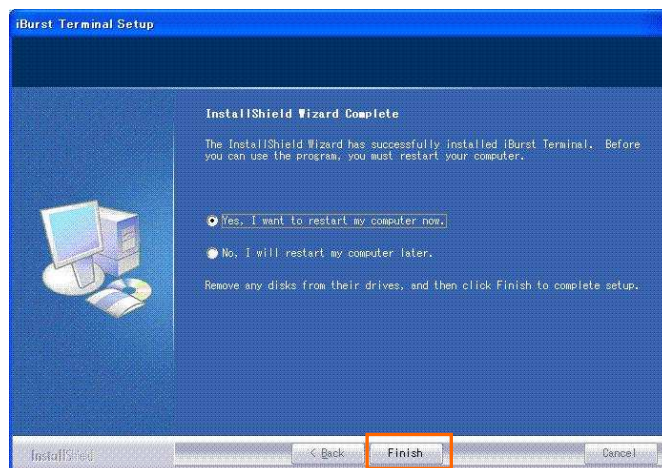
7. Click the [Next >] button.



8. The following dialog window will appear, and installation of software begins.



9. When the installing process finishes, the dialog window shown below will appear. Select “Yes, I want to restart my computer now” and click the [Finish] button in the dialog window.



10. After finish of restarting, connect the iBurst Terminal with your PC's USB port.

The iBurst Terminal will be recognized and will be ready to use automatically.

NOTE: If the PC request to restart again, click [Yes] to restart the PC.

NOTE: To connect to the Internet, refer to page 62.

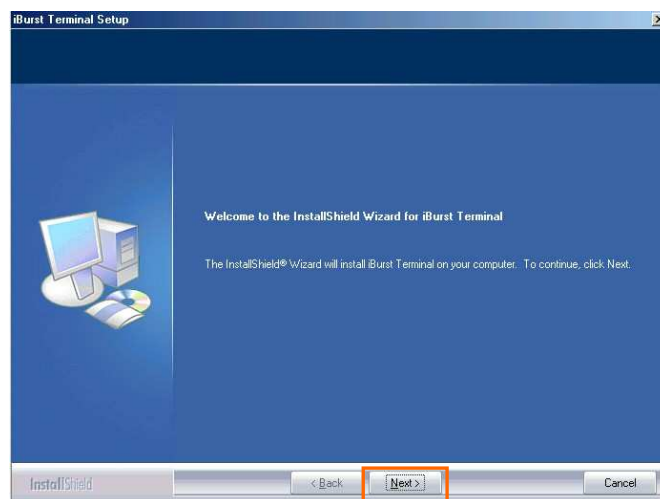
Installation for Windows 2000

1. Make sure to disconnect the iBurst Terminal with your PC.

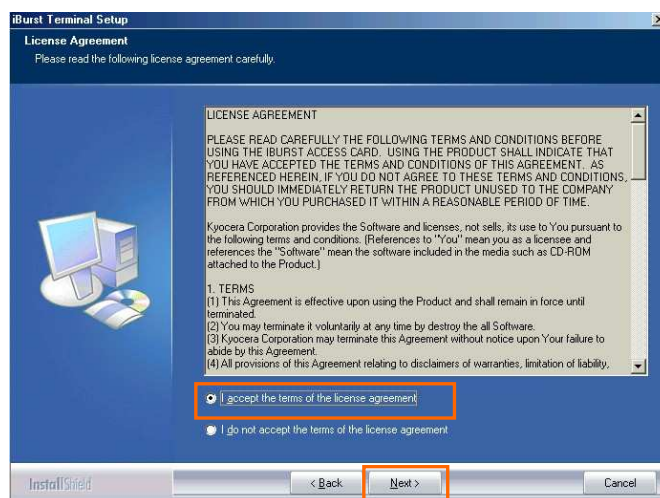
ATTENTION:

Don't connect the iBurst Terminal with your PC through a USB cable until completion of installation.

2. Turn your PC on.
3. Insert the Software Utility CD provided by the network operator into your CD-ROM drive; or execute the appropriate installation software.
4. iBurst Terminal Setup starts. Click the [Next >] button.



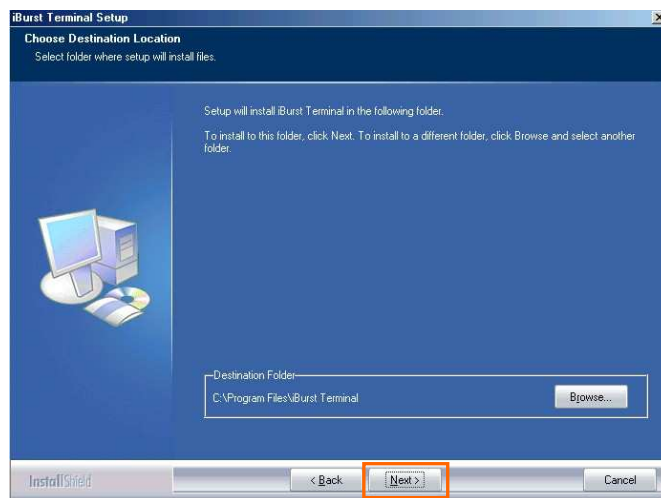
5. Select [I accept the terms the license agreement], click the [Next >] button.



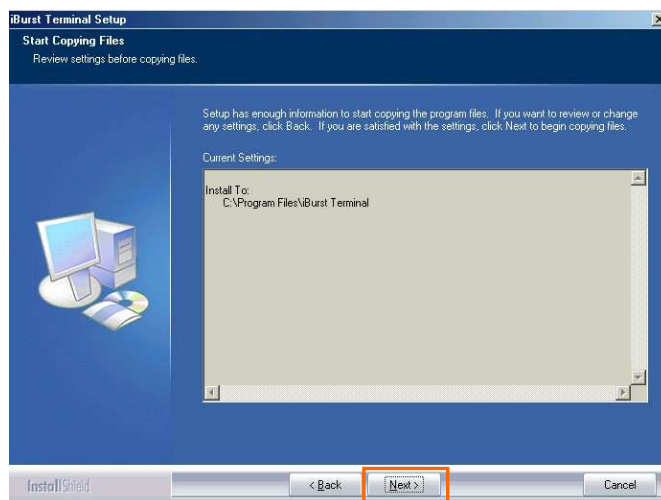
iBurst Terminal, Desktop Model (UTD) / USB Model (UTU), Manual

6. Click the [Next >] button after appearing dialog window as shown below.

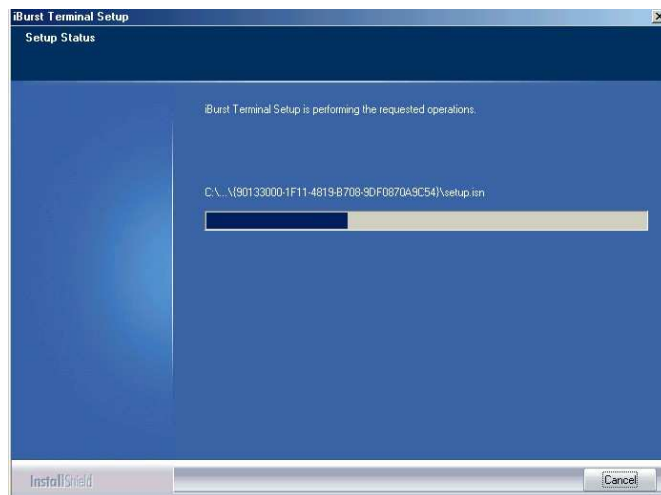
NOTE: To install to a different folder, click [Browse...] and specify another folder.



7. Click the [Next >] button.

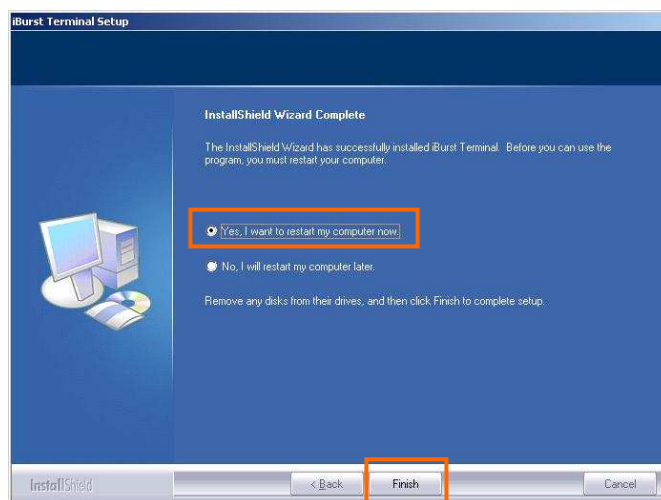


8. The following dialog window will appear, and installation of software begins.



iBurst Terminal, Desktop Model (UTD) / USB Model (UTU), Manual

9. When the installing process finishes, the dialog window shown below will appear. Select **[Yes, I want to restart my computer now]** and click the **[Finish]** button in the dialog window.



10. After finish of restarting, **connect the iBurst Terminal with your PC's USB port.**
The iBurst Terminal will be recognized and will be ready to use automatically.

NOTE: If the PC request to restart again, click **[Yes]** to restart the PC.

NOTE: To connect to the Internet, refer to page 67.

Installation for Windows Me

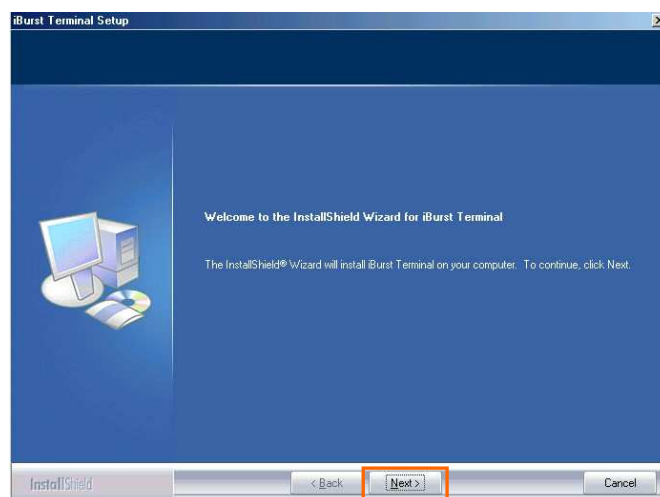
Since the installation disk of Windows Me may be required while driver installation, please prepare the CD or copy the CD into a hard disk in your PC for it.

1. Make sure to disconnect the iBurst Terminal with your PC.

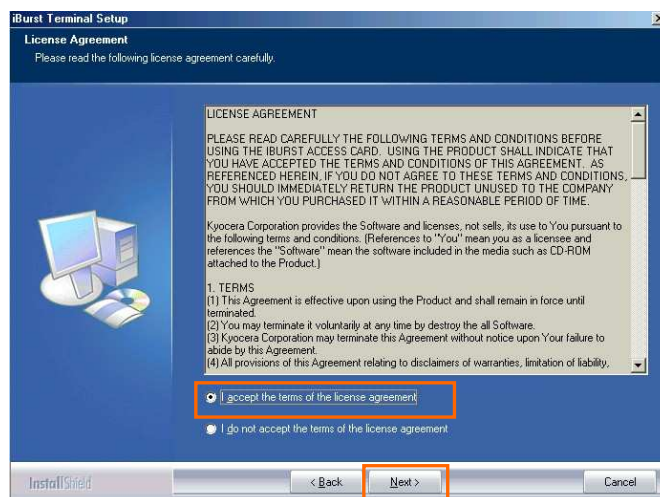
ATTENTION:

Don't connect the iBurst Terminal with your PC through a USB cable until completion of installation.

2. Turn your PC on.
3. Insert the Software Utility CD provided by the network operator into your CD-ROM drive; or execute the appropriate installation software.
4. iBurst Terminal Setup starts. Click the [Next >] button.



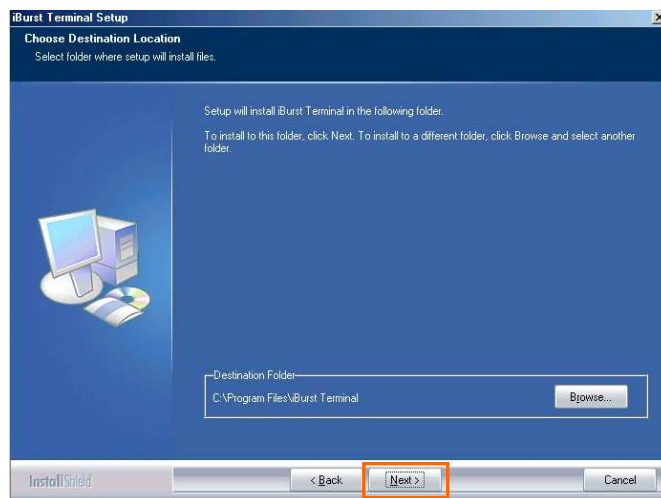
5. Select [I accept the terms the license agreement], click the [Next >] button.



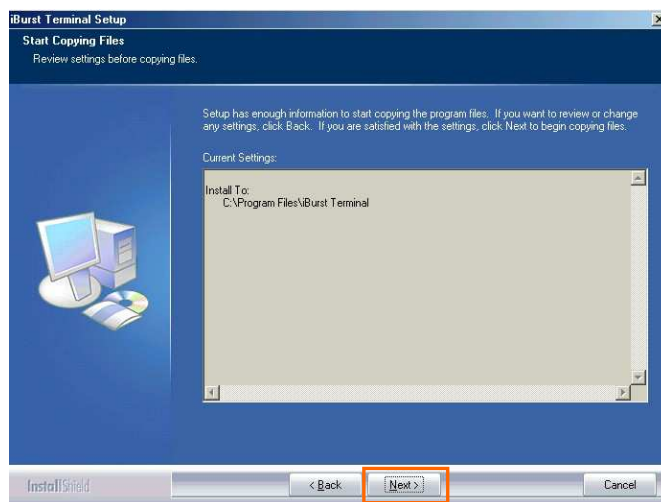
iBurst Terminal, Desktop Model (UTD) / USB Model (UTU), Manual

6. Click the [Next >] button after appearing dialog window as shown below.

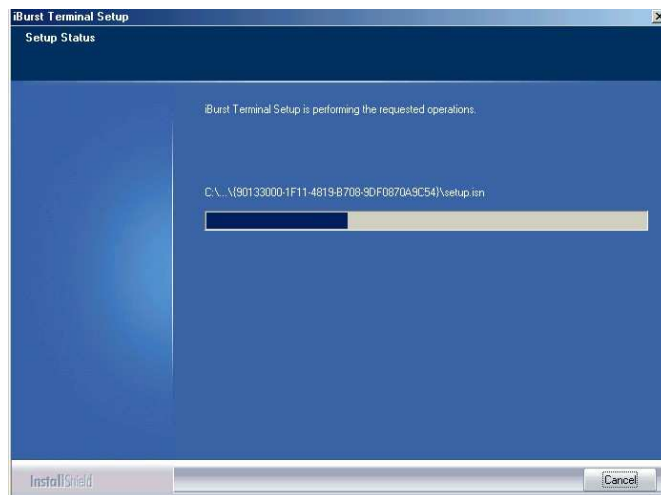
NOTE: To install to a different folder, click [Browse...] and specify another folder.



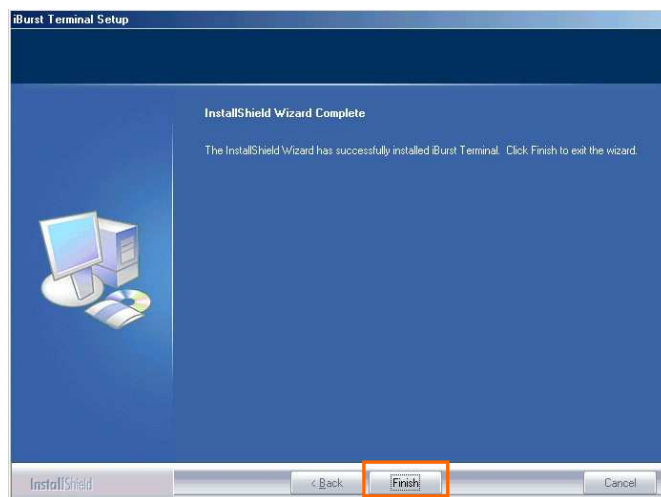
7. Click the [Next >] button.



8. The following dialog window will appear, and installation of software begins.

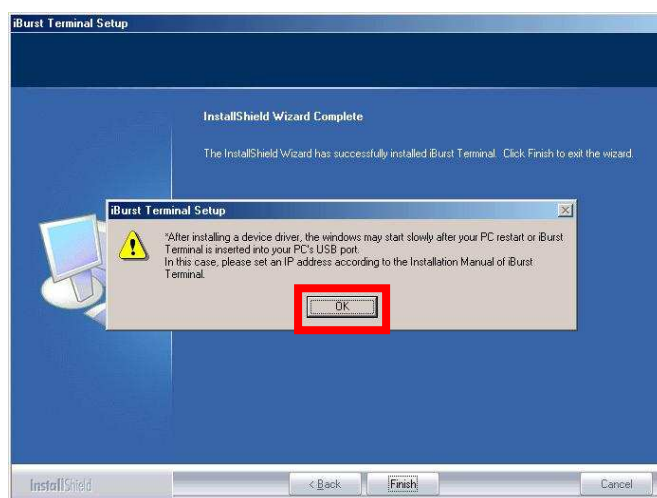


9. Click the **[Finish]** button.



10. Click the **[OK]** button.

NOTE: Refer to the 1st article in chapter 6, if you face such symptom described in the attention message.



NOTE:

If you are going to connect the iBurst Terminal with your PC only through an Ethernet cable, not through a USB cable, you can skip from here to step 18 and continue from step 19 in this section. You can see indications of the iBurst Terminal over Ethernet. See page 87 for the method.

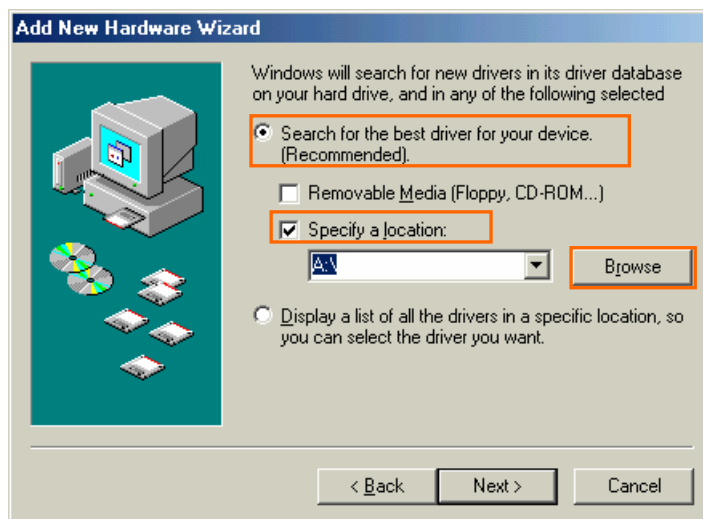
11. Connect the iBurst Terminal with your PC through a USB cable.

Windows will detect the iBurst Terminal as a new hardware so that **[Add New Hardware Wizard]** will begin.

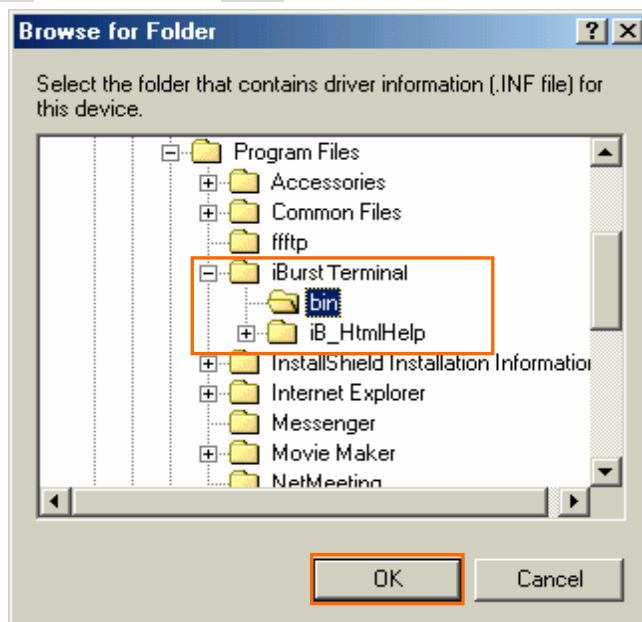
12. Select [Specify the location of the driver (Advanced)] and click the [Next >] button in the dialog window.



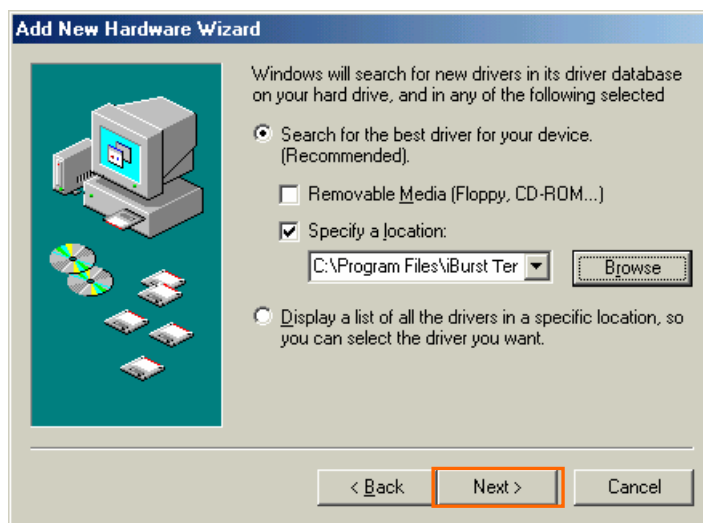
13. Select [Search for the best driver for your device.(Recommended)], then check [Specify a location] and click the [Browse] button.



14. Select [C:\Program Files\iBurst Terminal\bin], and click the [OK] button.



15. Click the **Next >** button.



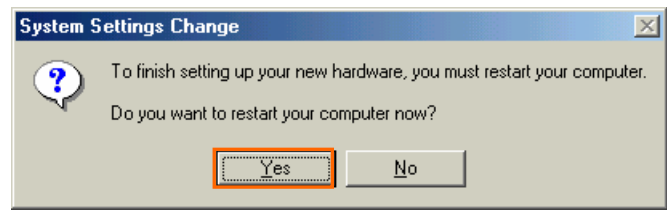
16. Confirm that the device name **iBurst Terminal** is displayed in the dialog window, then click the **Next >** button.



17. Click the **Finish** button.



18. The dialog window shown below will appear, click the **[Yes]** button, and restart your PC.

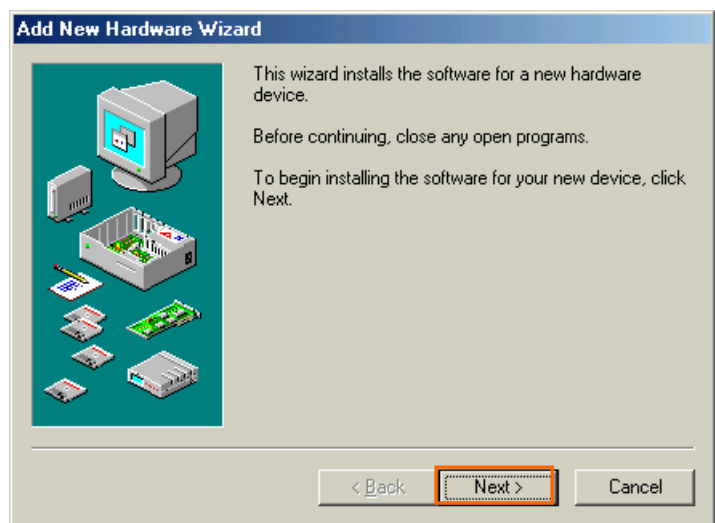


NOTE: If the PC doesn't shutdown itself, try to press Alt+Ctrl+Del keys several times.

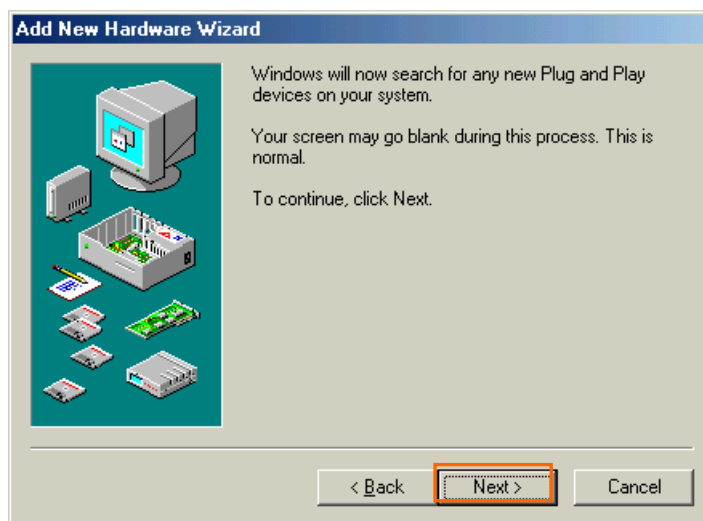
19. Click the **[Start]** -> **[Settings]** -> **[Control Panel]** to open Control Panel as shown below, and then double click **[Add New Hardware]**.



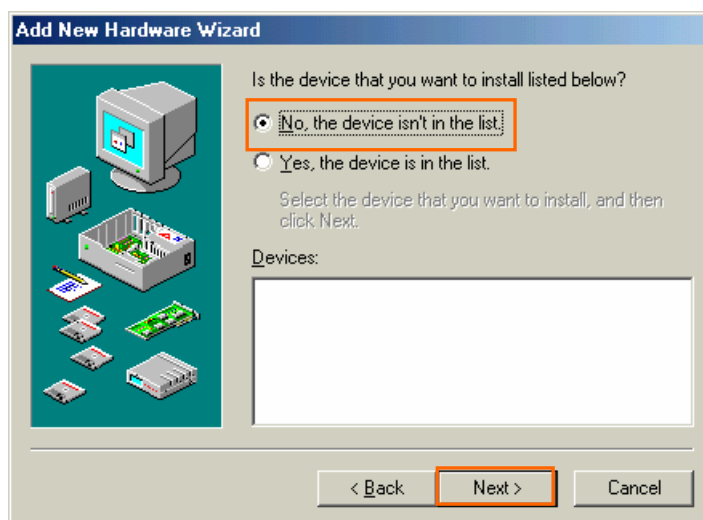
20. Click the **[Next >]** button.



21. Click the [Next >] button.



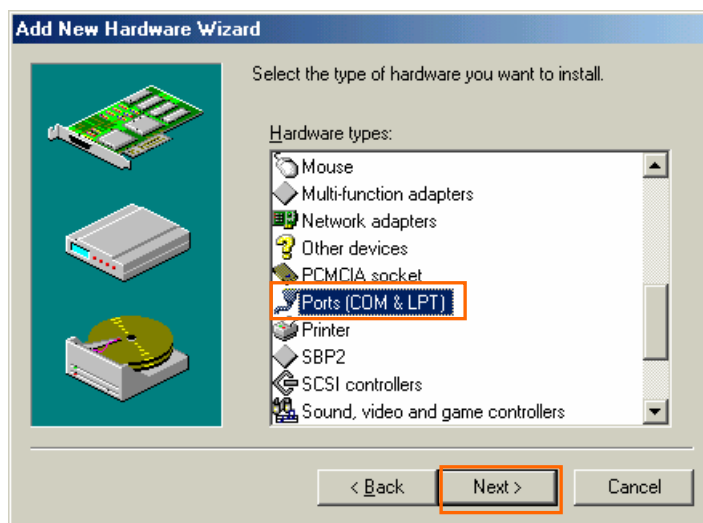
NOTE: If the dialog window shown below appears, select [No, the device isn't in the list] and click the [Next >] button.



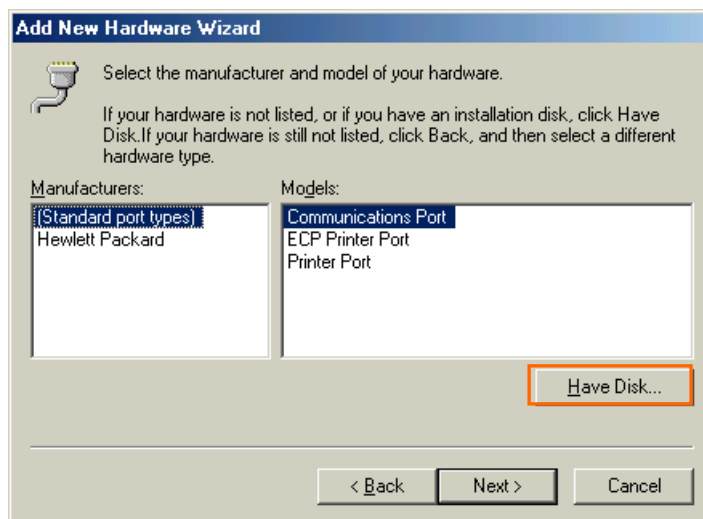
22. Select [No, I want to select the hardware from a list], and click the [Next >] button.



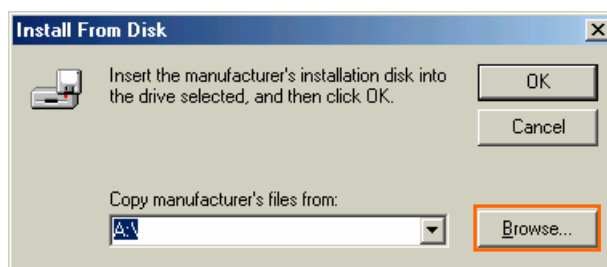
23. Select [Ports (COM & LPT)], and click the [Next >] button.



24. Click the [Have Disk..] button.

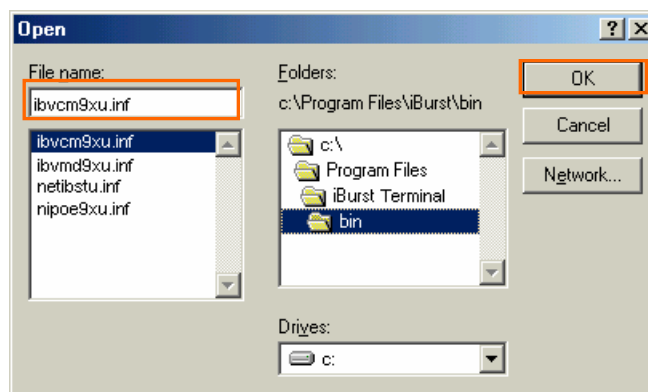


25. Click the [Browse...] button.



26. Select [C:\Program Files\iBurst Terminal\bin], and click the [OK] button.

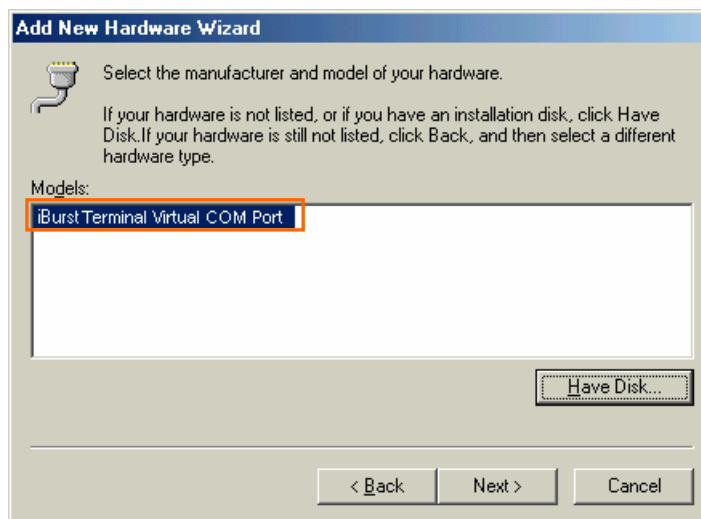
NOTE: You don't have to select a file name. Windows will find an appropriate file automatically.



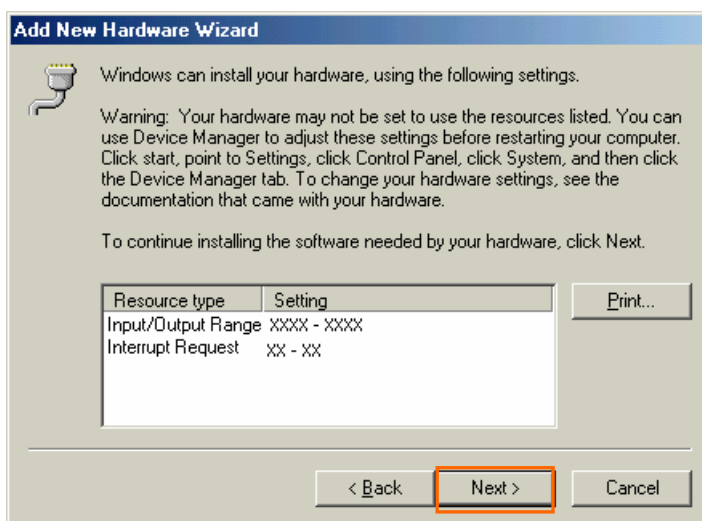
27. Click the [OK] button.



28. Select [iBurst Terminal Virtual COM Port], and click the [Next >] button.



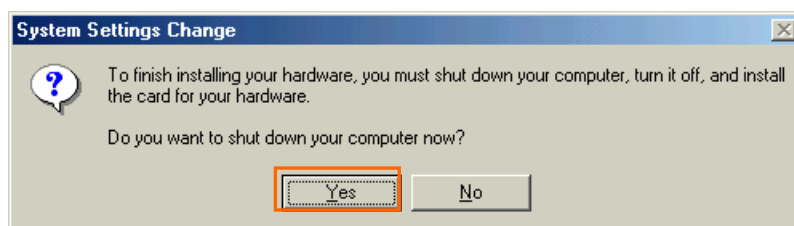
29. Click the [Next >] button.



30. Click the [Finish] button.



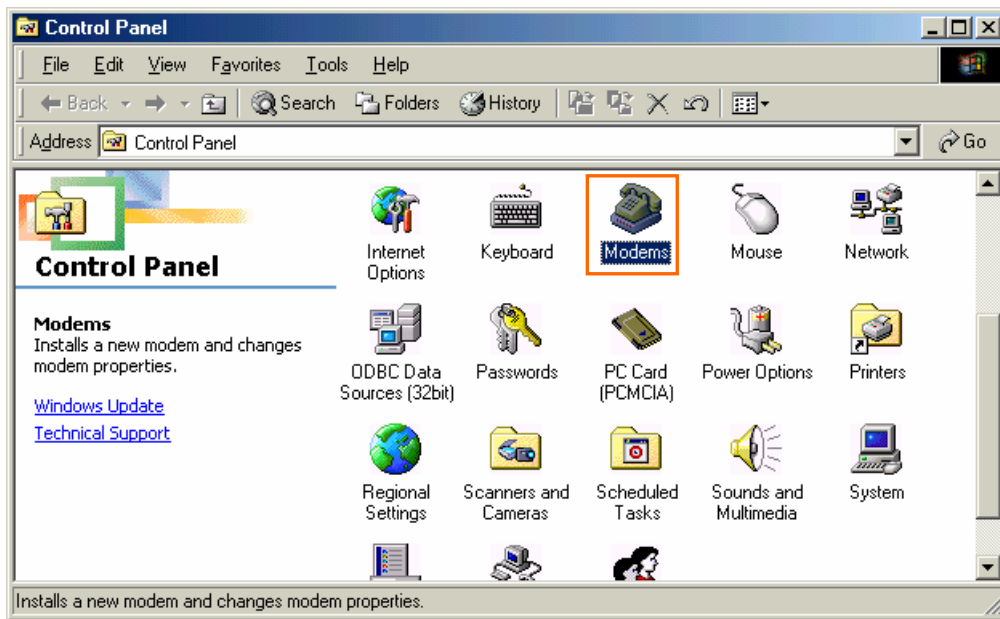
31. The dialog window shown below will appear, click the [Yes] button to **SHUTDOWN** your PC.



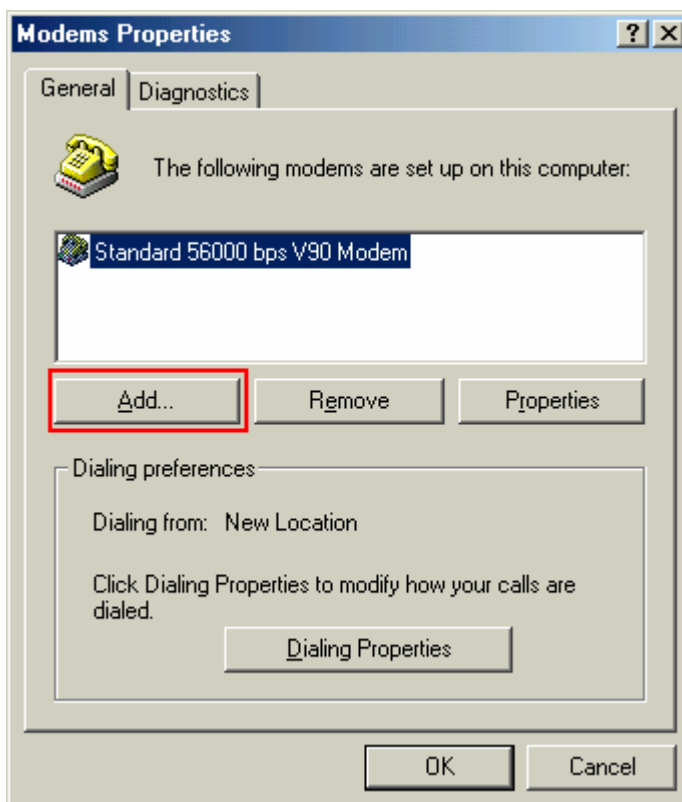
NOTE: If the PC doesn't shutdown itself, try to press Alt+Ctrl+Del keys several times.

32. Turn your PC on again.

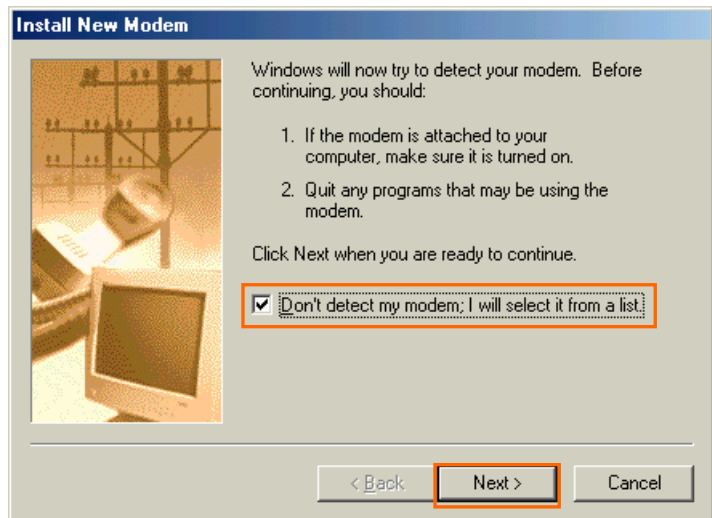
33. Click the [Start] -> [Settings] -> [Control Panel] to open Control Panel as shown below, and then double click [Modems].



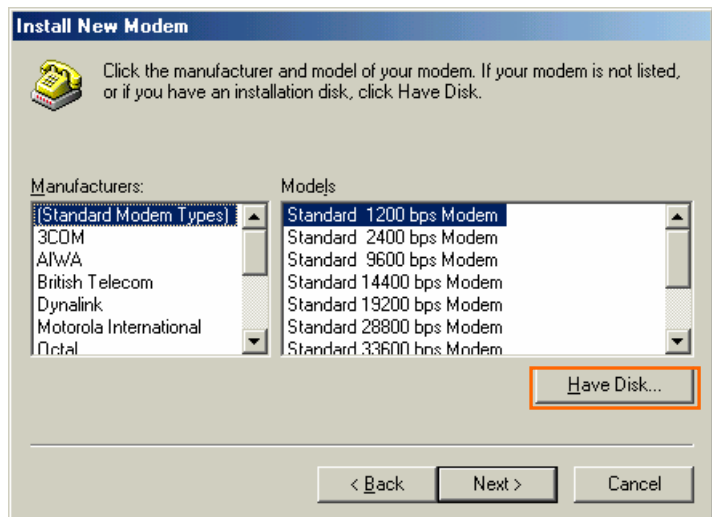
NOTE: If the dialog window as shown below appears, click the [Add] button.



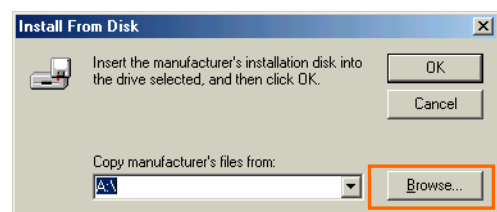
34. Check [Don't detect my modem; I will select it from a list], and click the [Next >] button.



35. Click the [Have Disk..] button.



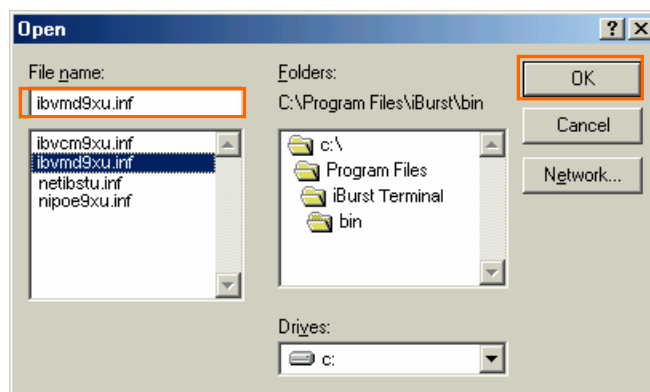
36. Click the [Browse...] button.



iBurst Terminal, Desktop Model (UTD) / USB Model (UTU), Manual

37. Select [C:\Program Files\iBurst Terminal\bin], and click the [OK] button.

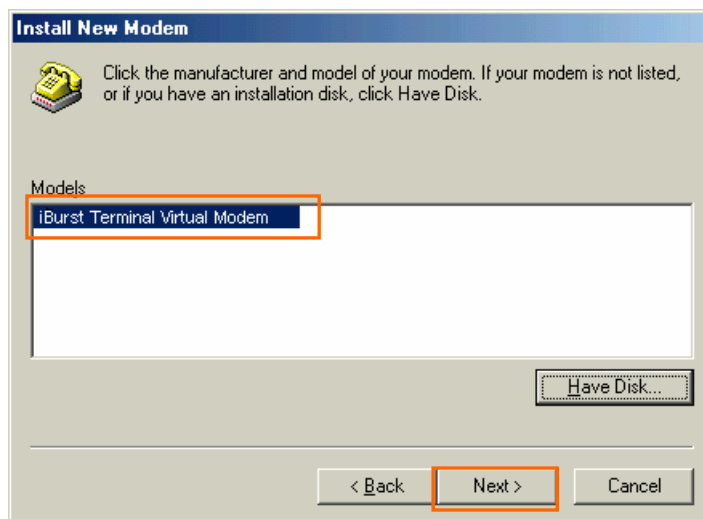
NOTE: You don't have to select a file name. Windows will find an appropriate file automatically.



38. Click the [OK] button.

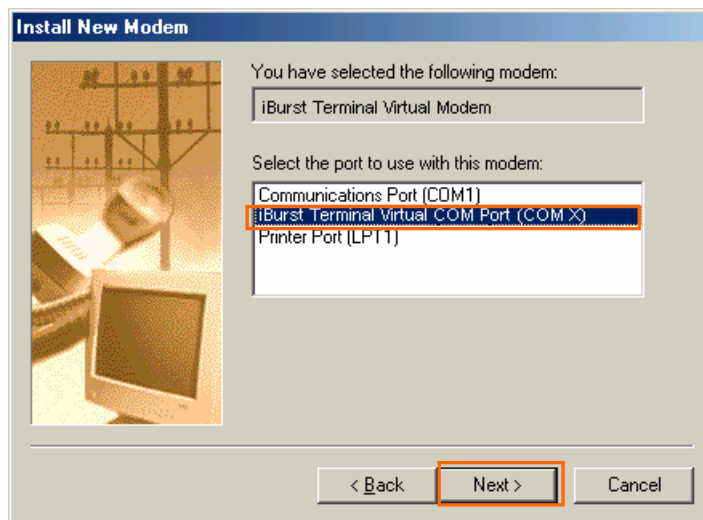


39. Select [iBurst Terminal Virtual MODEM], and click the [Next >] button.

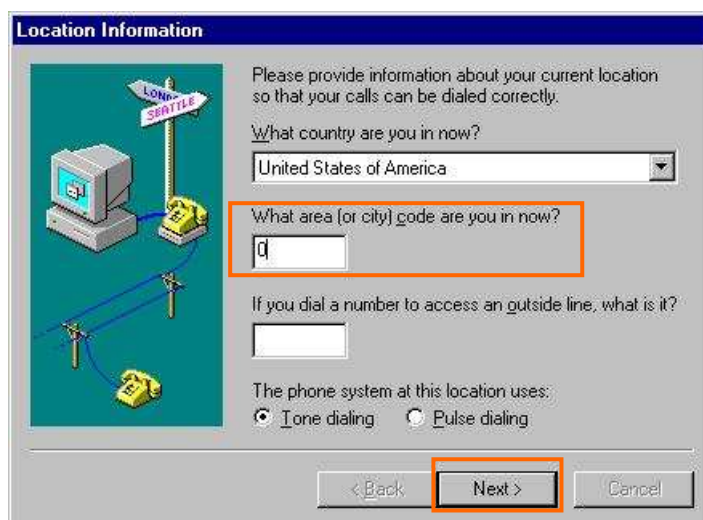


40. Select [iBurst Terminal Virtual COM Port (COM X)], and click the [Next >] button.

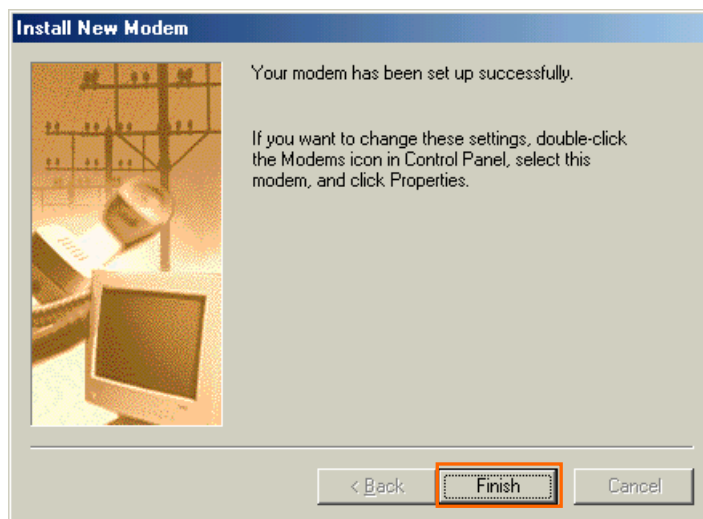
NOTE: The 'X' in "COM X" above is a COM port number assigned automatically.



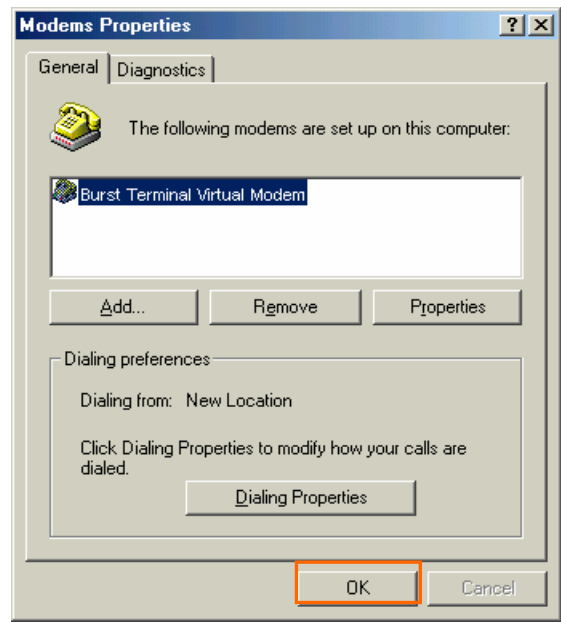
NOTE: If the dialog window as shown below appears, type a dummy number in "What are (or city) code are you in now ?" and then click the [Next >] button.



41. Click the [Finish] button.



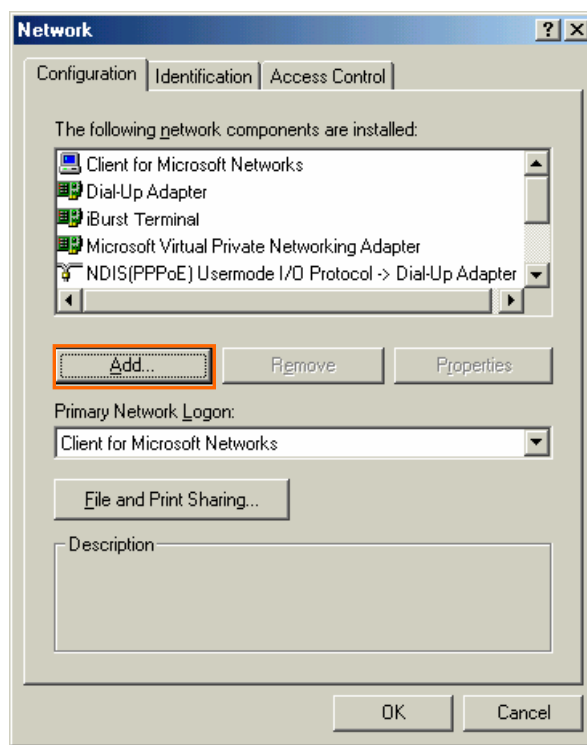
42. Click the [OK] button.



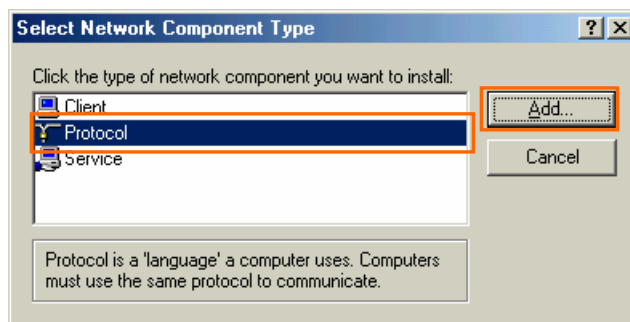
43. Click the [Start] -> [Settings] -> [Control Panel] to open Control Panel as shown below, and then double click [Network].



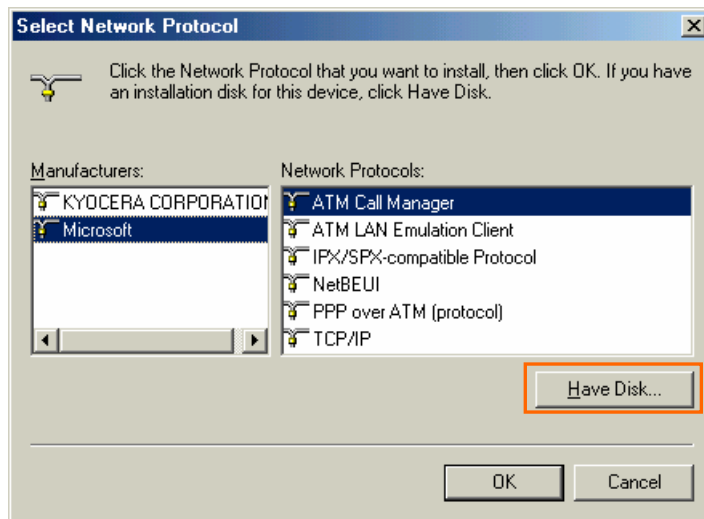
44. Click the [Add...] button on [Configuration] tab.



45. Select [Protocol] and click the [Add...] button.



46. Click the [Have Disk...] button.

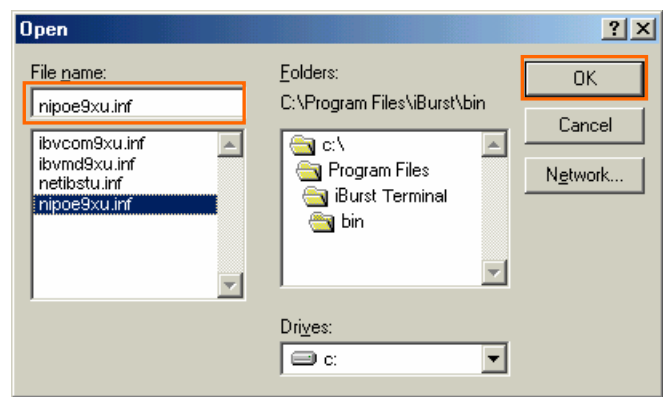


47. Click the [Browse...] button.

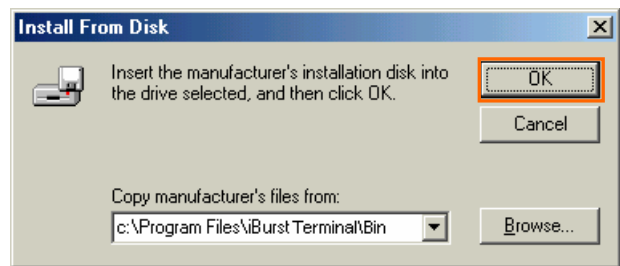


48. Select [C:\Program Files\iBurst Terminal\bin], and click the [OK] button.

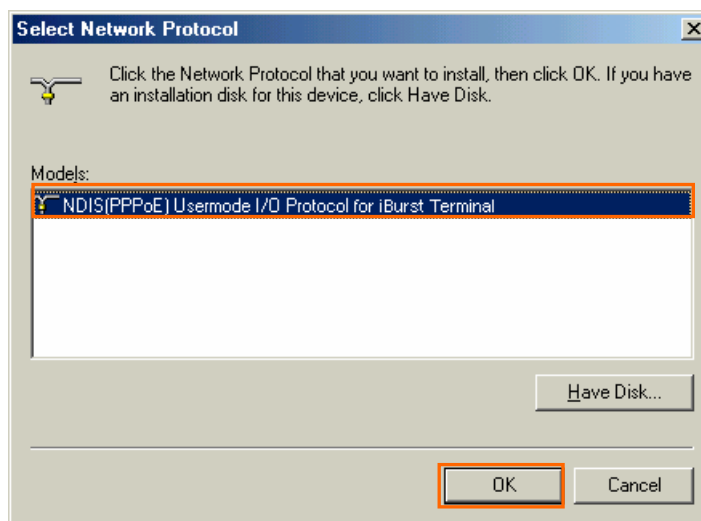
NOTE: You don't have to select a file name. Windows will find an appropriate file automatically.



49. Click the [OK] button.



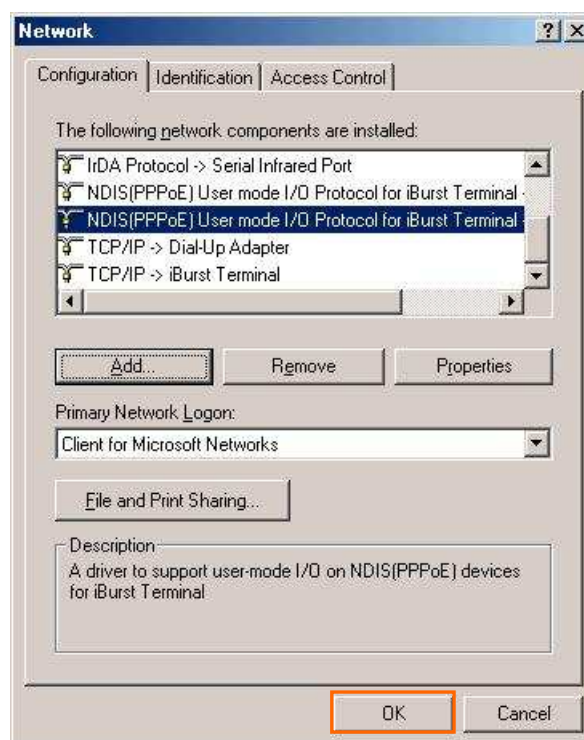
50. Select [NDIS(PPPoE) Usermode I/O Protocol for iBurst Terminal], click the [OK] button.



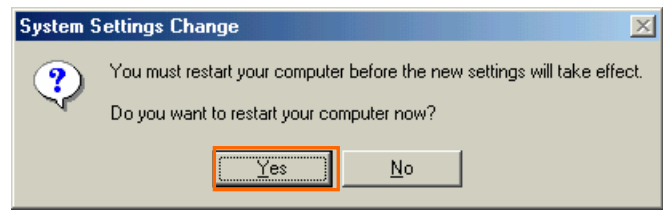
NOTE: If the same dialog at step 46 is popped up again, cancel once and repeat from step 44.

51. Click the [OK] button.

NOTE: For USB connection with iBurst Terminal, “NDIS(PPPoE) User mode I/O Protocol for iBurst Terminal -> iBurst Terminal” must be added automatically.
For Ethernet connection with iBurst Terminal, “NDIS(PPPoE) User mode I/O Protocol for iBurst Terminal -> The name of the Ethernet Network Interface Card or Port” shall be added automatically.



52. The dialog window shown below will appear, click the [Yes] button, and restart your PC.



NOTE: If the PC doesn't shutdown itself, try to press Alt+Ctrl+Del keys several times.

NOTE: To connect to the Internet, refer to page 67.

Installation for Windows 98SE

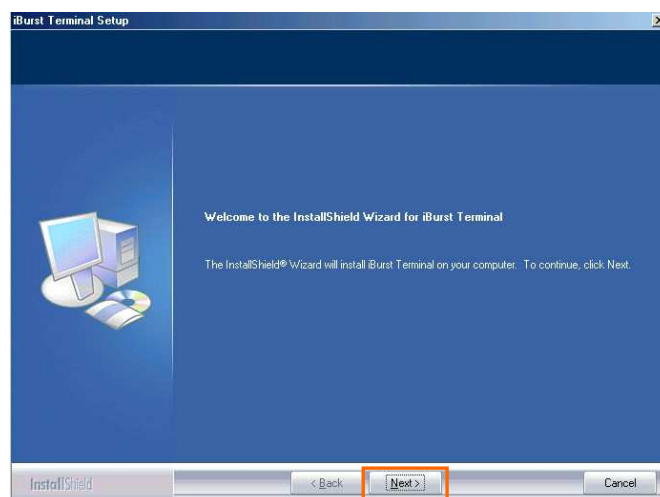
Since the installation disk of WINDOWS 98SE may be required while driver installation, please prepare the CD or copy the CD into a hard disk in your PC for it.

1. Make sure to disconnect the iBurst Terminal with your PC.

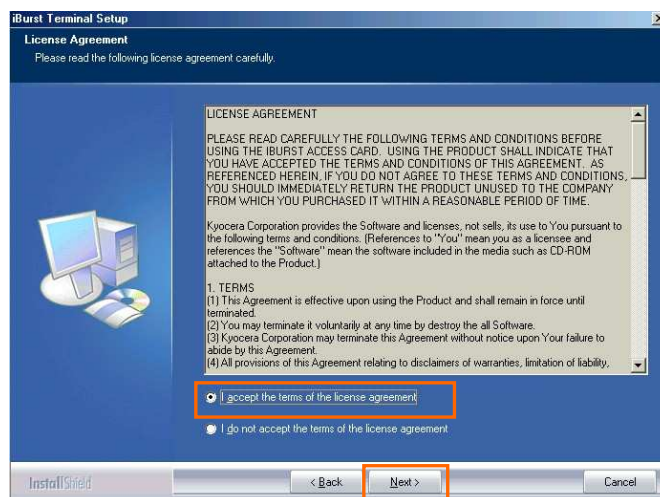
ATTENTION:

Don't connect the iBurst Terminal with your PC through a USB cable until completion of installation.

2. Turn your PC on.
3. Insert the Software Utility CD provided by the network operator into your CD-ROM drive; or execute the appropriate installation software.
4. iBurst Terminal Setup starts. Click the [Next >] button.



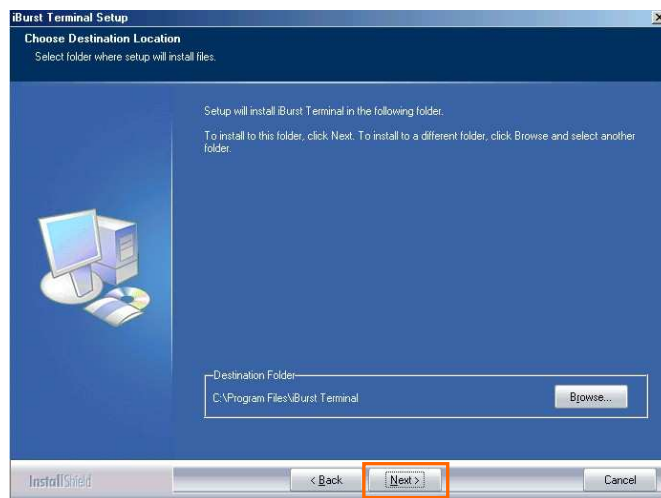
5. Select [I accept the terms the license agreement], click the [Next >] button.



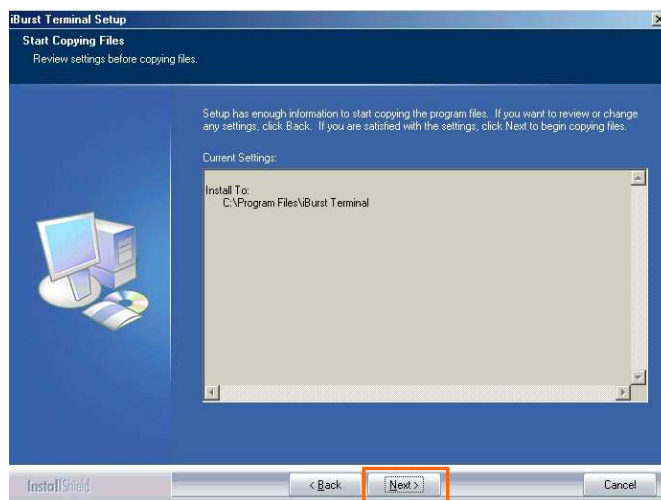
iBurst Terminal, Desktop Model (UTD) / USB Model (UTU), Manual

6. Click the [Next >] button after appearing dialog window as shown below.

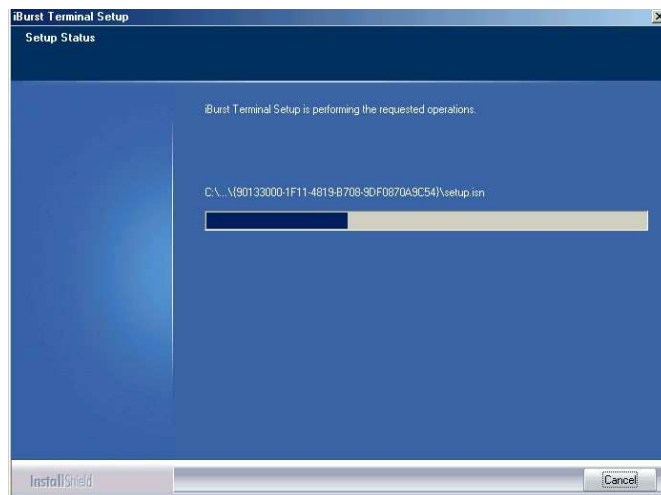
NOTE: To install to a different folder, click [Browse...] and specify another folder.



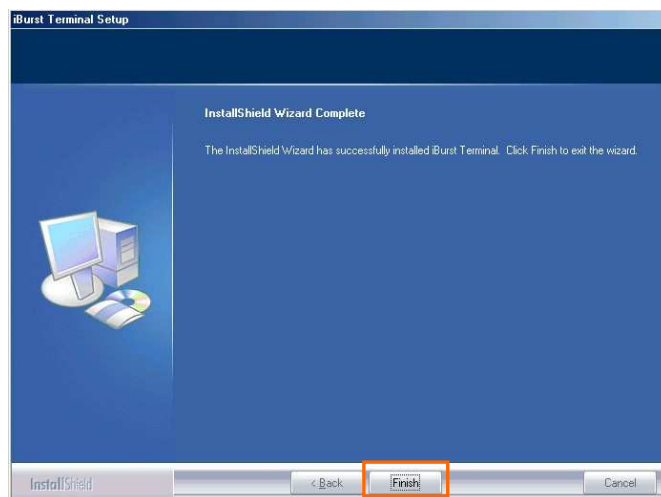
7. Click the [Next >] button.



8. The following dialog window will appear, and installation of software begins.

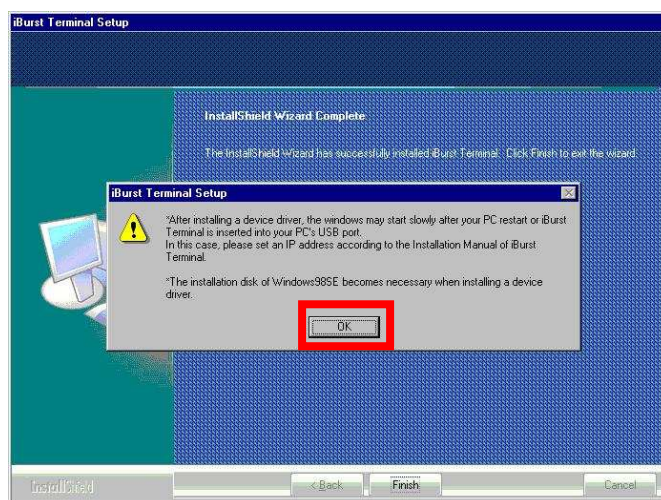


9. Click the **[Finish]** button.



10. Click the **[OK]** button.

NOTE: Refer to the 1st article in chapter 6, if you face such symptom described in the attention message.



NOTE:

If you are going to connect the iBurst Terminal with your PC only through an Ethernet cable, not through a USB cable, you can skip from here to step 19 and continue from step 20 in this section. You can see indications of the iBurst Terminal over Ethernet. See page 87 for the method.

11. Connect the iBurst Terminal with your PC through a USB cable.

Windows will detect the iBurst Terminal as a new hardware so that **[Add New Hardware Wizard]** will begin.

12. Click the **[Next >]** button in the dialog window.



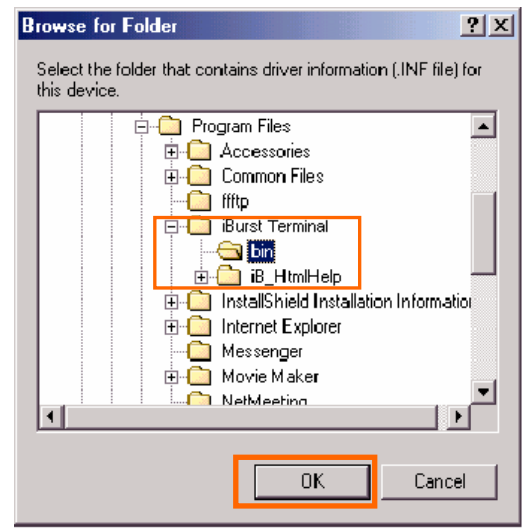
13. Select **[Search for the best driver for your device.(Recommended)]**, and then check the **[Next >]** button.



14. Check **[Specify a location]** and click the **[Browse]** button.



15. Select [C:\Program Files\iBurst Terminal\bin], and click the [OK] button.



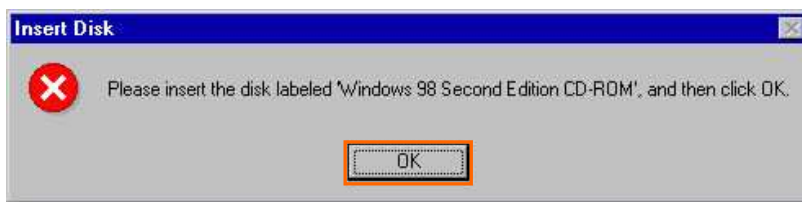
16. Click the [Next >] button.



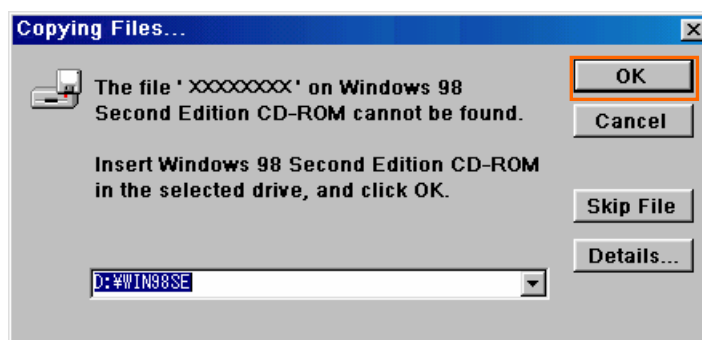
17. Confirm that the device name [iBurst Terminal] is displayed in the dialog window, then click the [Next >] button.



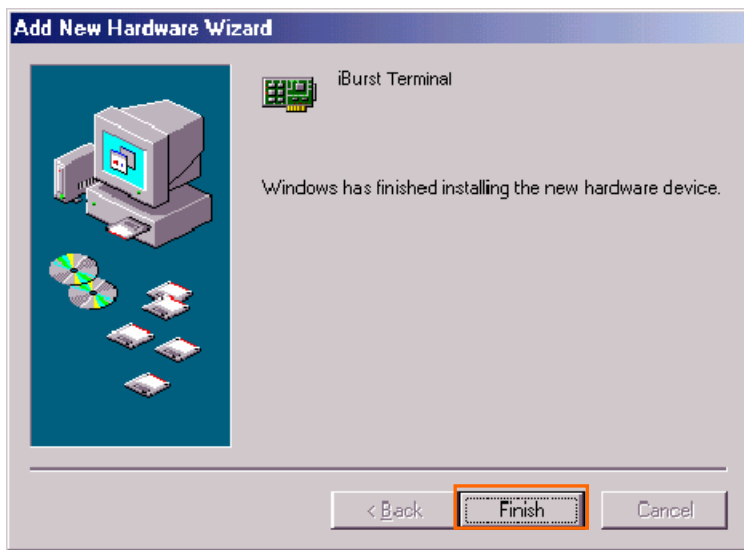
NOTE: If the dialog window as shown below appears, insert [Windows 98SE CD-ROM] into the CD-ROM drive and click the [OK] button.



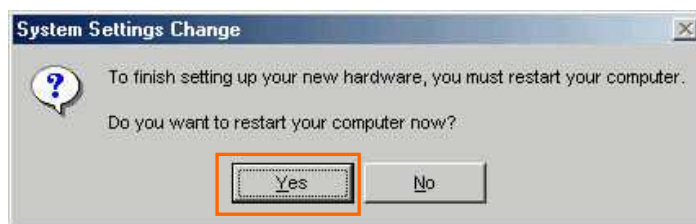
NOTE: If the dialog window as shown below appears, insert [Windows 98SE CD-ROM] into your PC and enter the directory of your [Windows 98SE CD-ROM], click the [OK] button. “xxxxxxx” in the picture below is a file name that can not be found.



18. Click the [Finish] button.

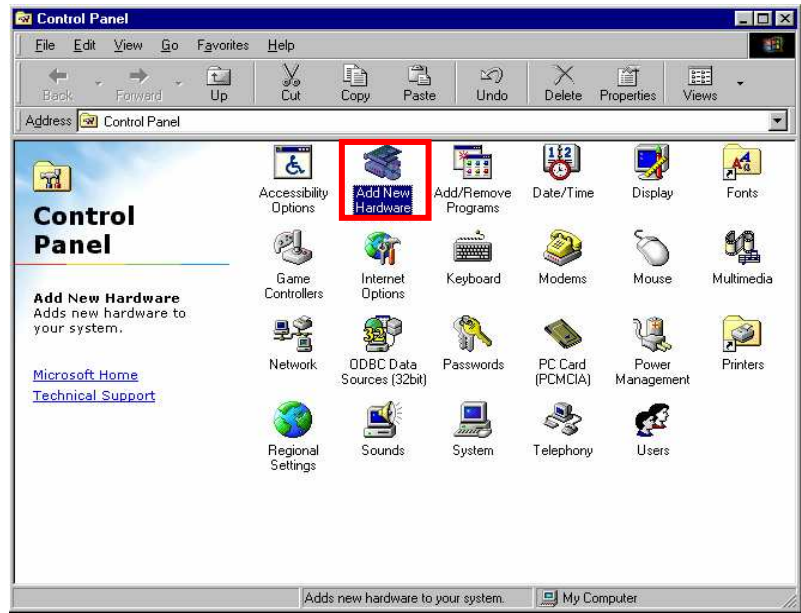


19. The dialog window shown below will appear, click the [Yes] button, and restart your PC.

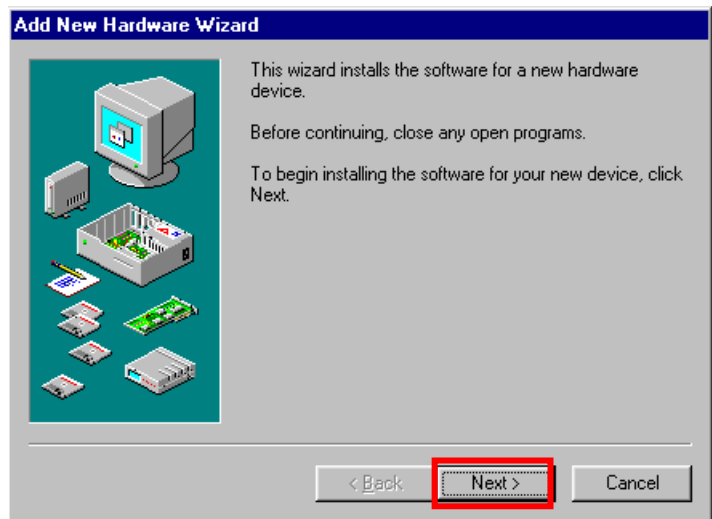


NOTE: If the PC doesn't shutdown itself, try to press Alt+Ctrl+Del keys several times.

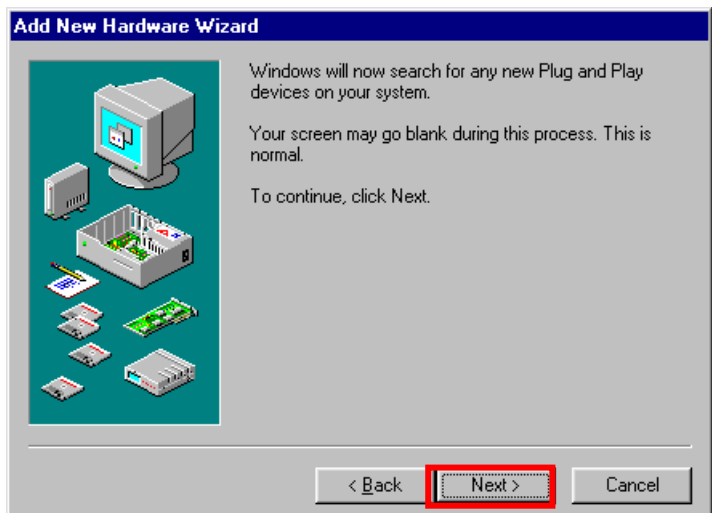
20. Click the [Start] -> [Settings] -> [Control Panel] to open Control Panel as shown below, and then double click [Add New Hardware].



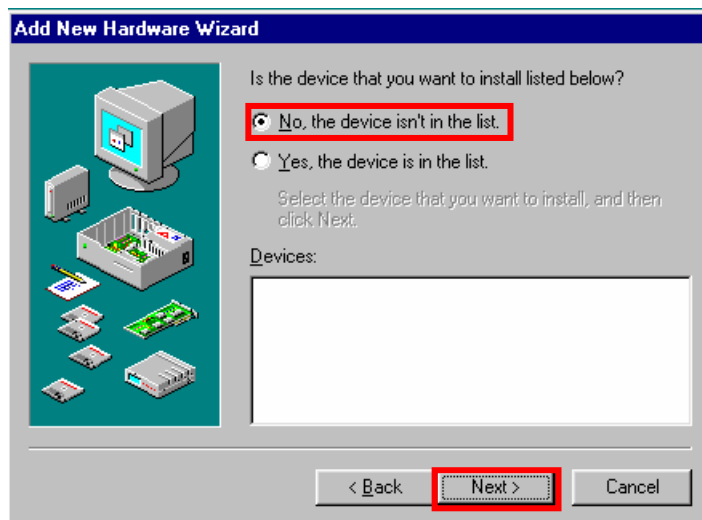
21. Click the [Next >] button.



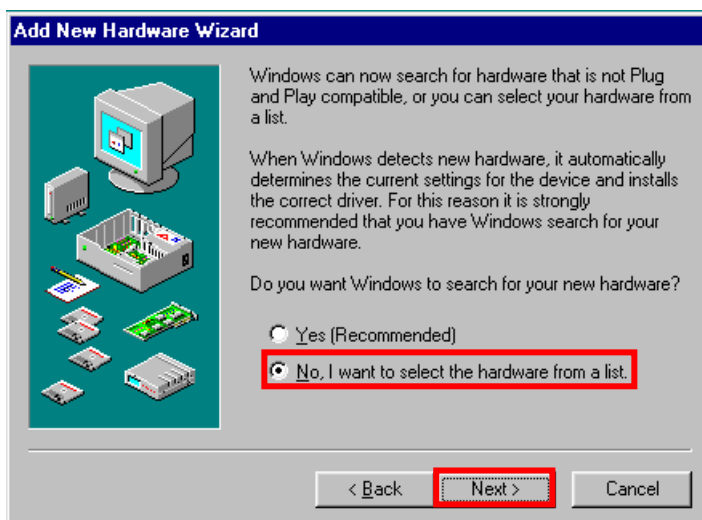
22. Click the [Next >] button.



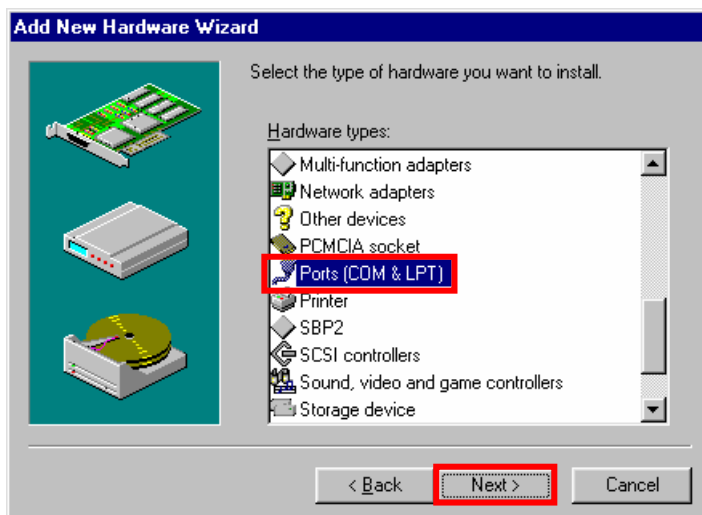
NOTE: If the dialog window as shown below appears, select [No, the device isn't in the list] and click the [Next >] button.



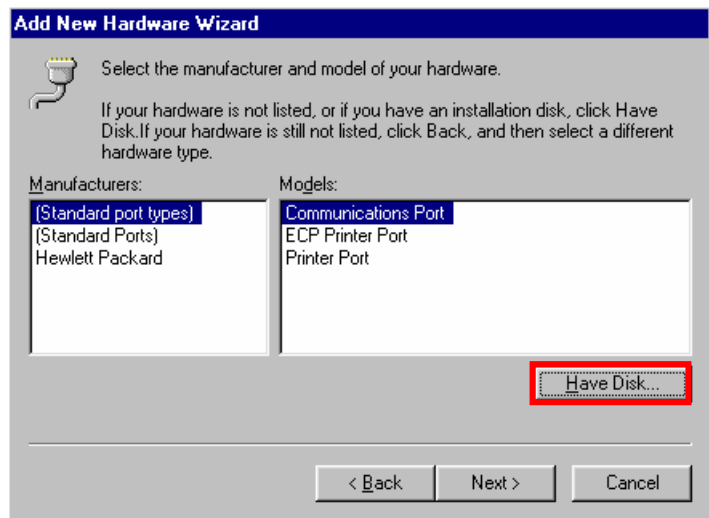
23. Select [No, I want to select the hardware from a list.], and click the [Next >] button.



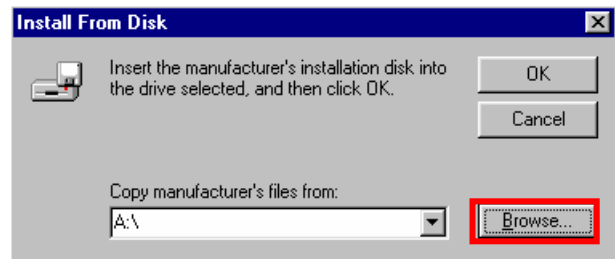
24. Select [Ports (COM & LPT)], and click the [Next >] button.



25. Click the [Have Disk..] button.

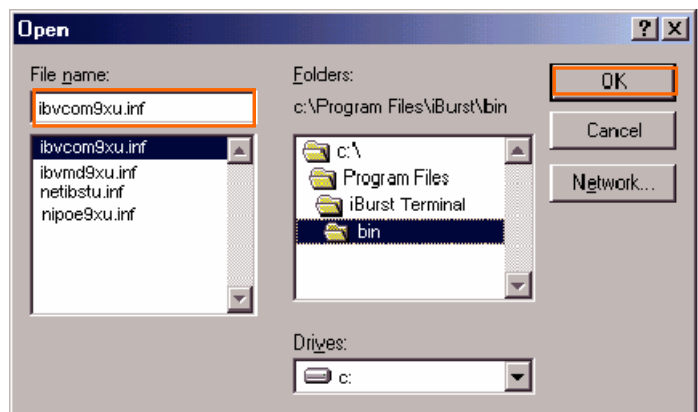


26. Click the [Browse...] button.

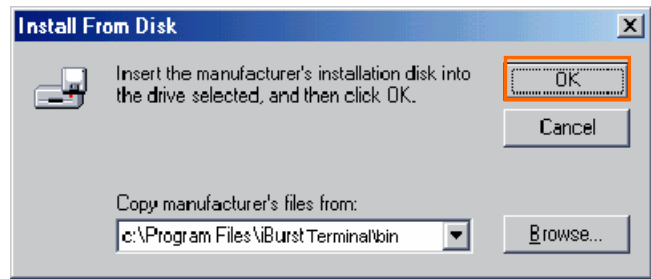


27. Select [C:\Program Files\iBurst Terminal\bin], and click the [OK] button.

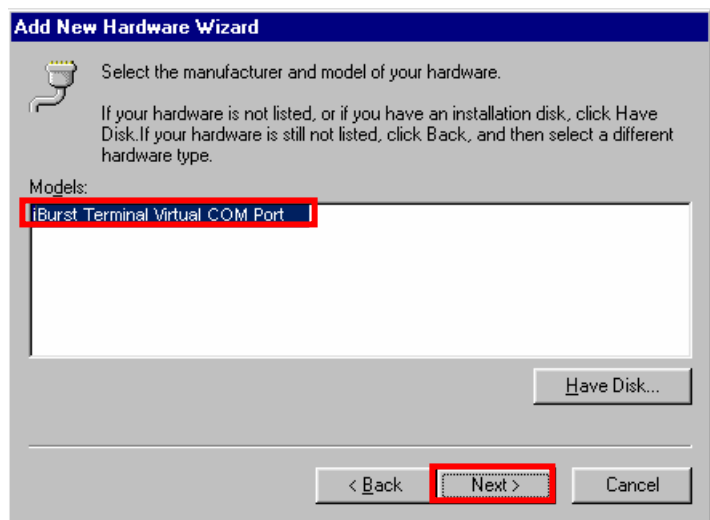
NOTE: You don't have to select a file name. Windows will find an appropriate file automatically.



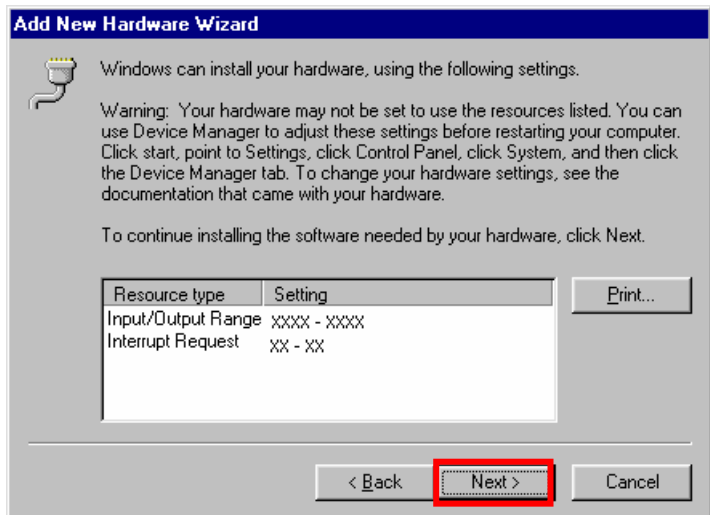
28. Click the [OK] button.



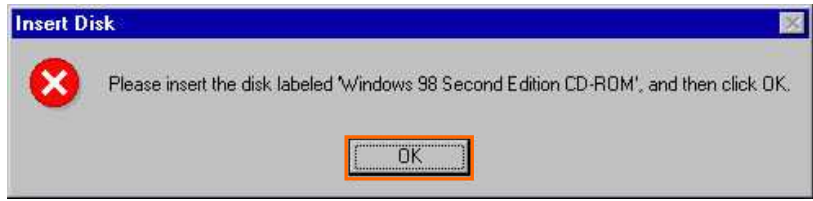
29. Select [iBurst Terminal Virtual COM Port], and click the [Next >] button.



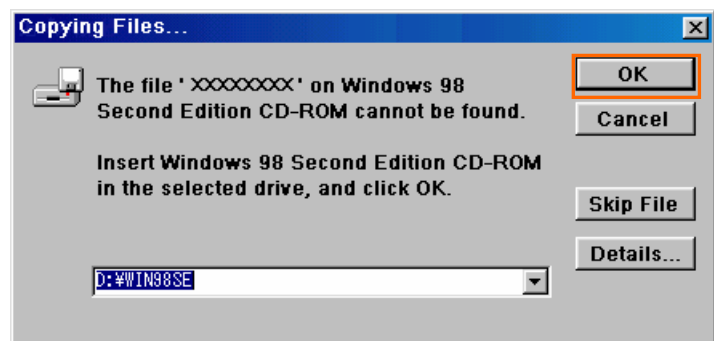
30. Click the [Next >] button.



NOTE: If the dialog window as shown below appears, insert [Windows 98SE CD-ROM] into the CD-ROM drive and click the [OK] button.



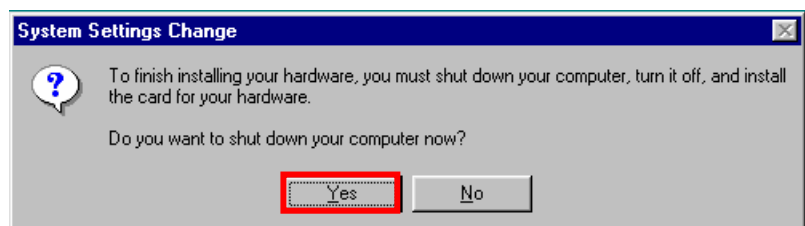
NOTE: If the dialog window as shown below appears, insert [Windows 98SE CD-ROM] into your PC and enter the directory of your [Windows 98SE CD-ROM], click the [OK] button. "xxxxxxx" in the picture below is a file name that can not be found.



31. Click the [Finish] button.



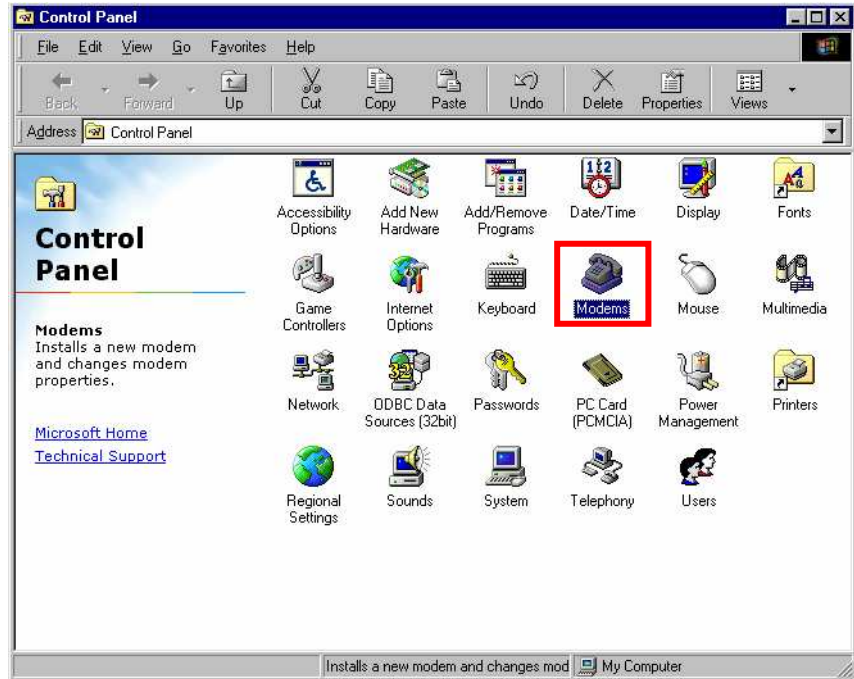
32. The dialog window shown below will appear, click the [Yes] button to **SHUTDOWN** your PC.



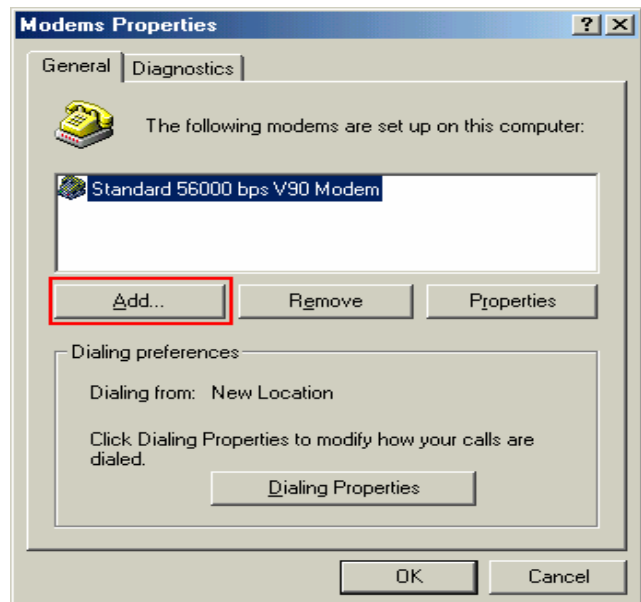
NOTE: If the PC doesn't shutdown itself, try to press Alt+Ctrl+Del keys several times.

33. Turn your PC on again.

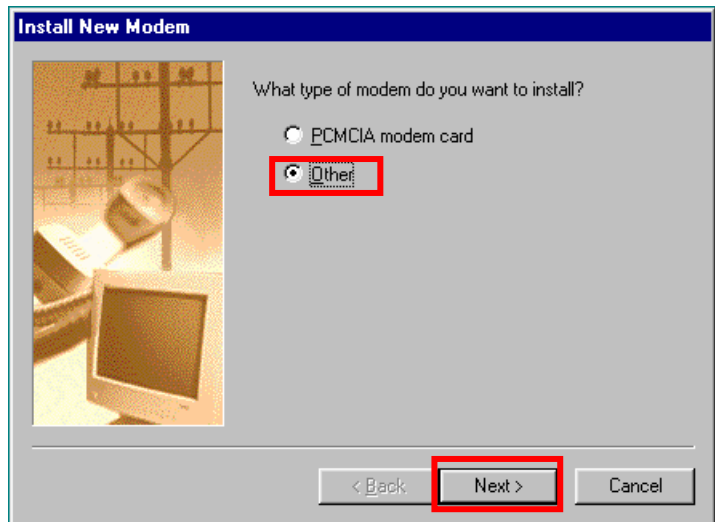
34. Click the [Start] -> [Settings] -> [Control Panel] to open Control Panel as shown below, and then double click [Modems].



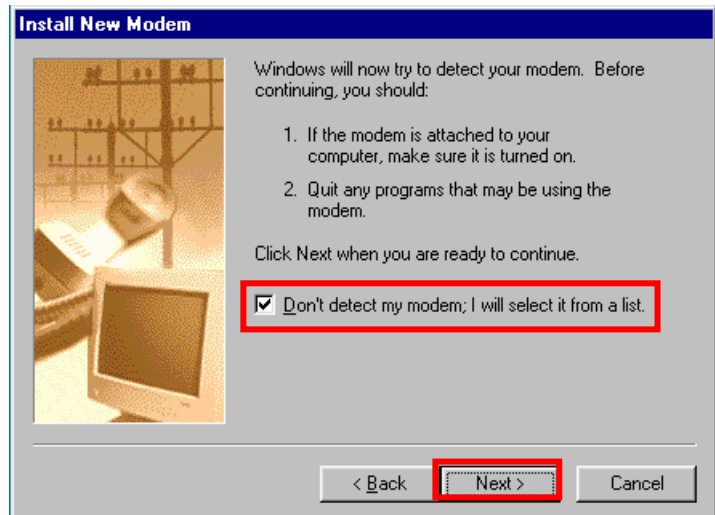
NOTE: If the dialog window as shown below appears, click the [Add] button.



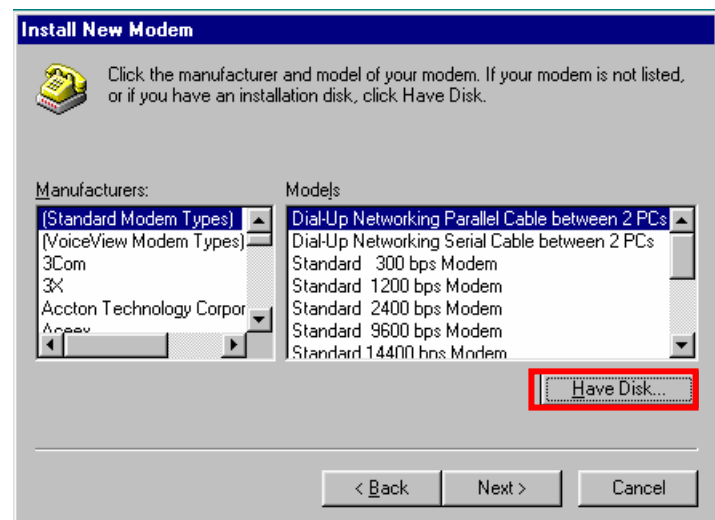
35. Select [Other], and click the [Next >] button.



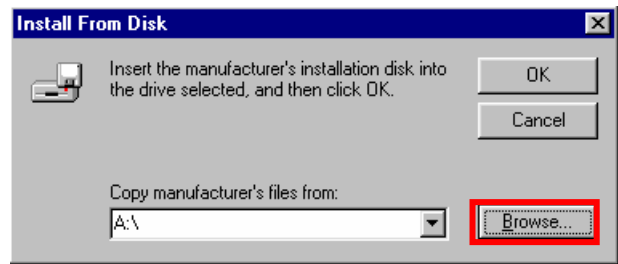
36. Check [Don't detect my modem, I will select it from a list] and click the [Next >] button.



37. Click the [Have Disk...] button.

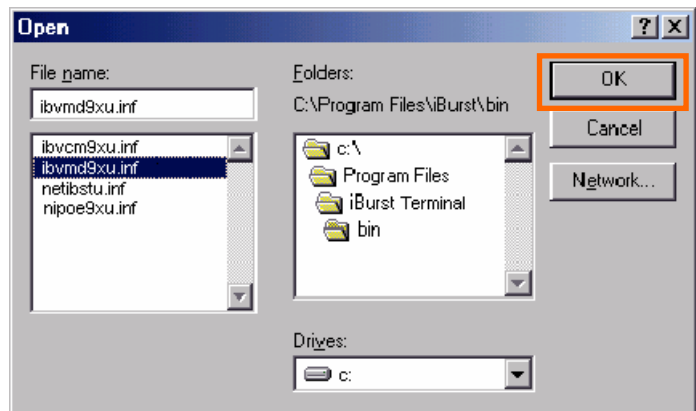


38. Click the [Browse...] button.

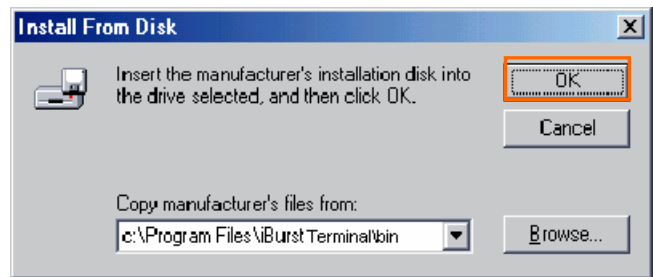


39. Select [C:\Program Files\iBurst Terminal\bin], and click the [OK] button.

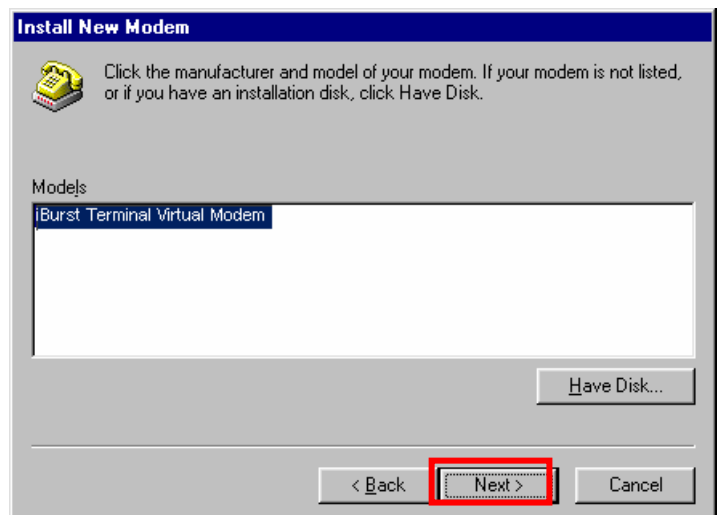
NOTE: You don't have to select a file name. Windows will find an appropriate file automatically.



40. Click the [OK] button.

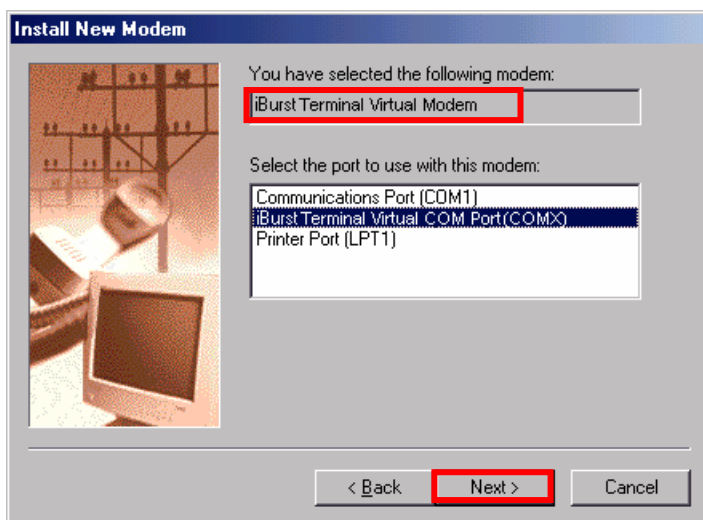


41. Select [iBurst Terminal Virtual MODEM], and click the [Next >] button.

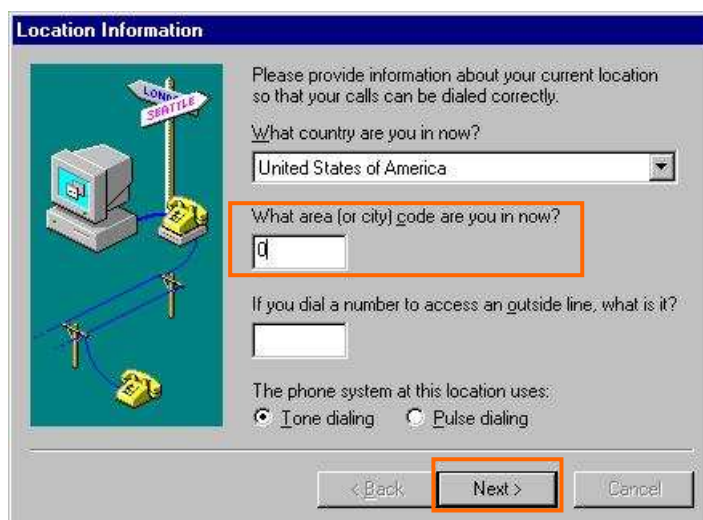


42. Select [iBurst Terminal Virtual COM Port (COM X)], and click the [Next >] button.

NOTE: The 'X' in "COM X" above is a COM port number assigned automatically.



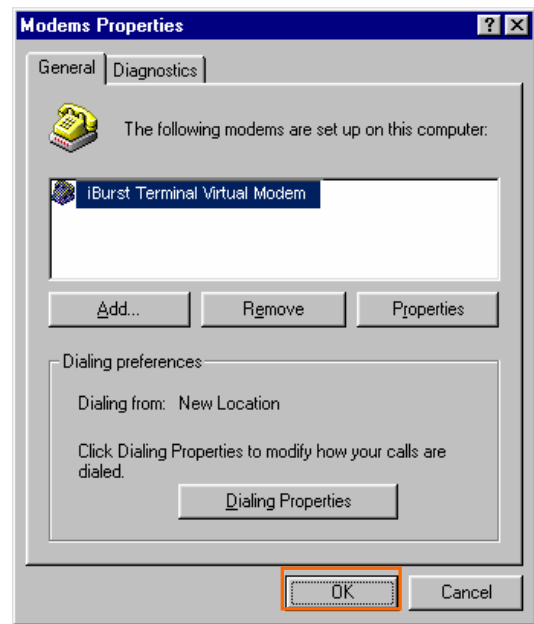
NOTE: If the dialog window as shown below appears, type a dummy number in "What area (or city) code are you in now?" and then click the [Next >] button.



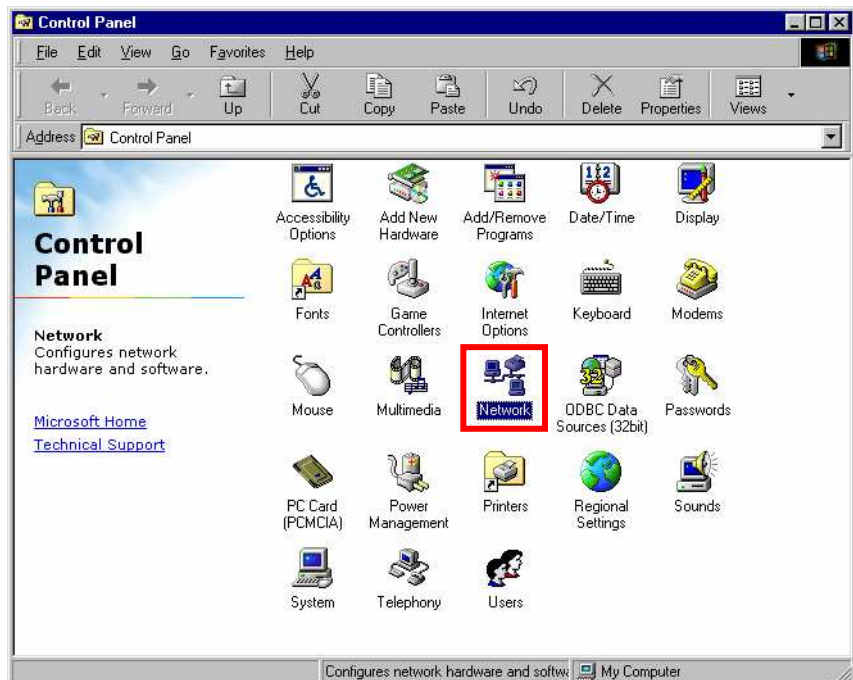
43. Click the [Finish] button.



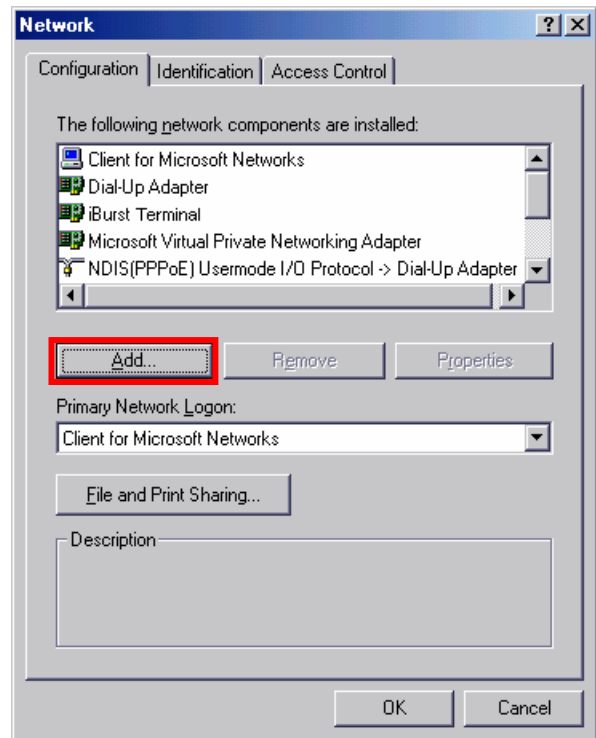
44. Click the [OK] button.



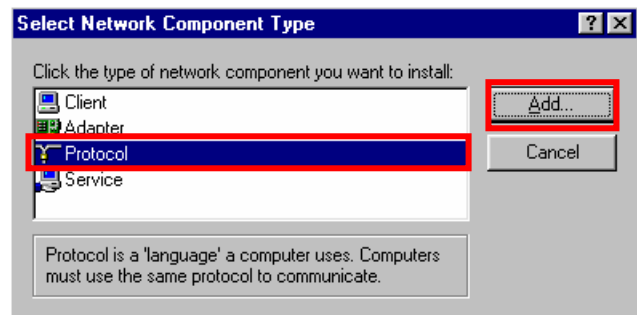
45. Click the [Start] -> [Settings] -> [Control Panel] to open Control Panel as shown below, and then double click [Network].



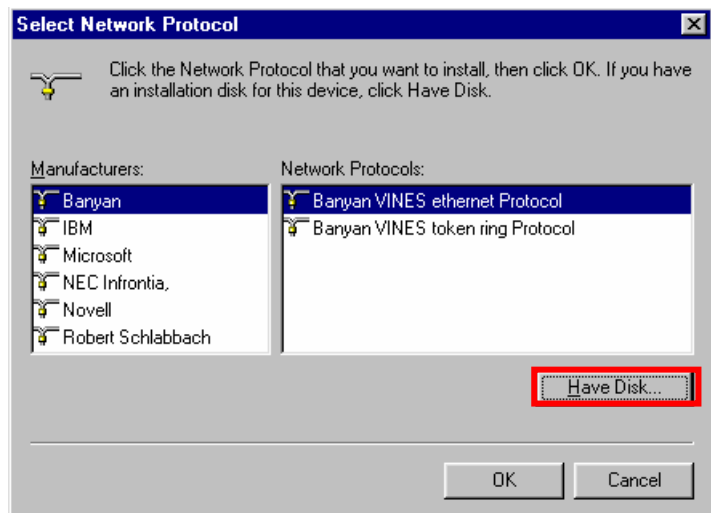
46. Click the **Add** button on **Configuration** tab.



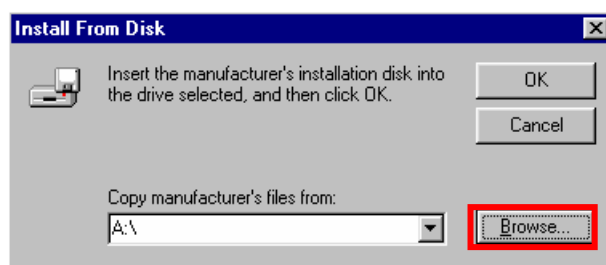
47. Select **Protocol** and click the **Add...** button.



48. Click the **Have Disk...** button.

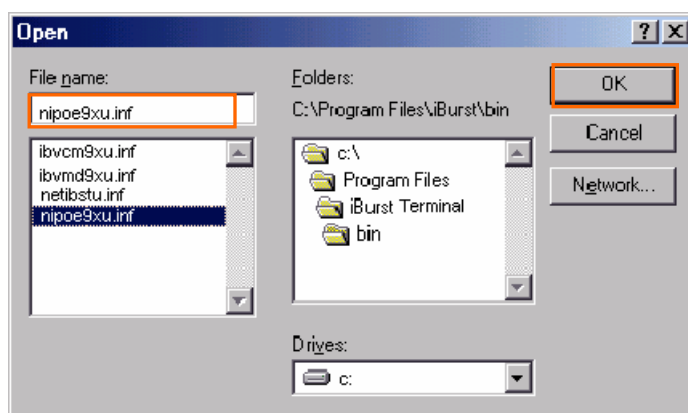


49. Click the [Browse...] button.

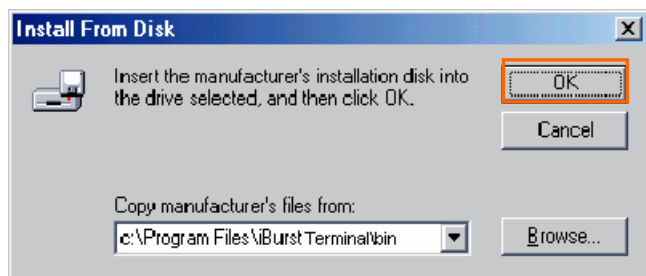


50. Select [C:\Program Files\iBurst Terminal\bin], and click the [OK] button.

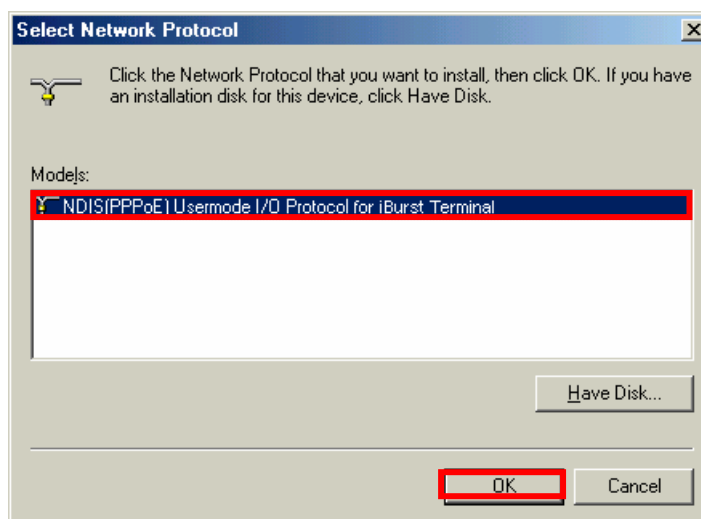
NOTE: You don't have to select a file name. Windows will find an appropriate file automatically.



51. Click the [OK] button.



52. Select [NDIS(PPPoE) Usermode I/O Protocol for iBurst Terminal], click the [OK] button.

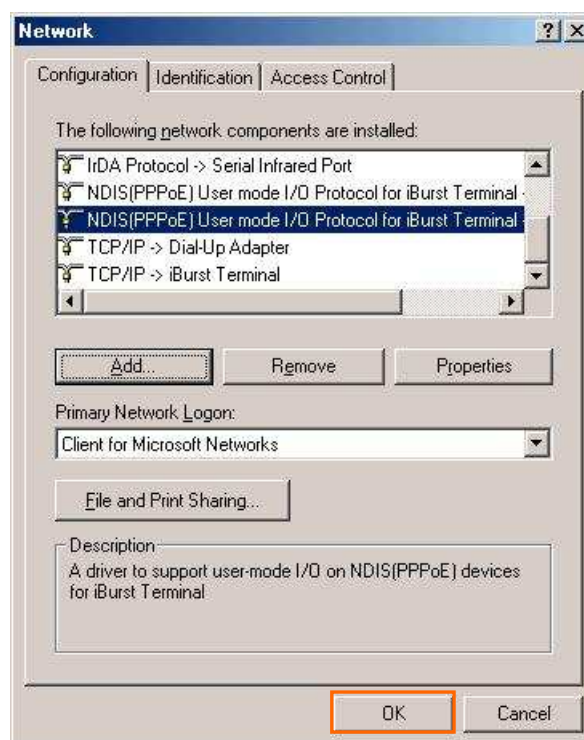


NOTE: If the same dialog at step 47 is popped up again, cancel once and repeat from step 45.

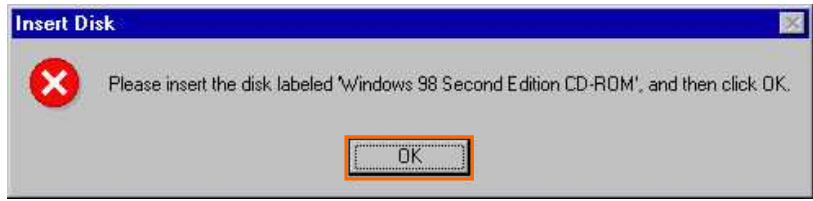
53. Click the [OK] button.

NOTE: For USB connection with iBurst Terminal, “NDIS(PPPoE) User mode I/O Protocol for iBurst Terminal -> iBurst Terminal” must be added in this stage.

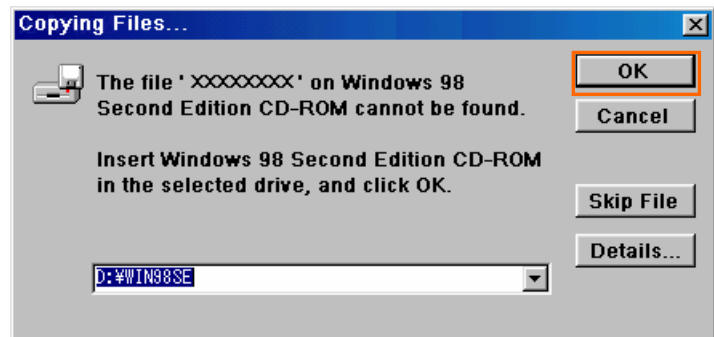
For Ethernet connection with iBurst Terminal, “NDIS(PPPoE) User mode I/O Protocol for iBurst Terminal -> The name of the Ethernet Network Interface Card or Port” shall be added in this stage.



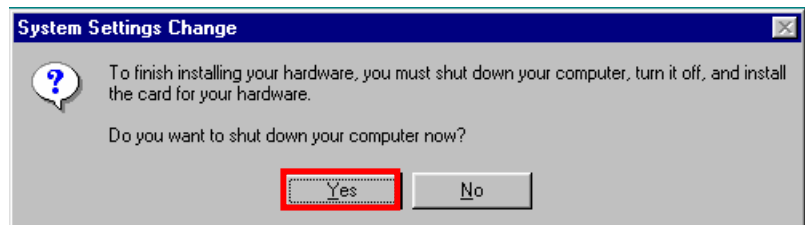
NOTE: If the dialog window as shown below appears, insert [Windows 98SE CD-ROM] into the CD-ROM drive and click the [OK] button.



NOTE: If the dialog window as shown below appears, insert [Windows 98SE CD-ROM] into your PC and enter the directory of your [Windows 98SE CD-ROM], click the [OK] button. “xxxxxxx” in the picture below is a file name that can not be found.



54. The dialog window shown below will appear, click the [Yes] button, and shut down your PC, then turn on your PC again.



NOTE: If the PC doesn't shutdown itself, try to press Alt+Ctrl+Del keys several times.

NOTE: To connect to the Internet, refer to page 67.

Installation for Mac OS X

NOTE:

If you are going to connect the iBurst Terminal with your PC only through an Ethernet cable, not through a USB cable, you don't need to install/uninstall any iBurst software. In such case, you can skip this section and you need only to create a dial-up connection setting described at from page 69. Please note that you cannot utilize the iBurst utility software described in chapter 3.

NOTE:

The installation software are applied to Mac OS X 10.1.5/10.2/10.3/10.4 except Mac Intel models. Make sure OS version on your PC and a corresponding installation software package for iBurst Terminal.

NOTE:

All screen copies in this section are based on Mac OS X 10.1.5.

1. Make sure to disconnect the iBurst Terminal with your PC.

ATTENTION:

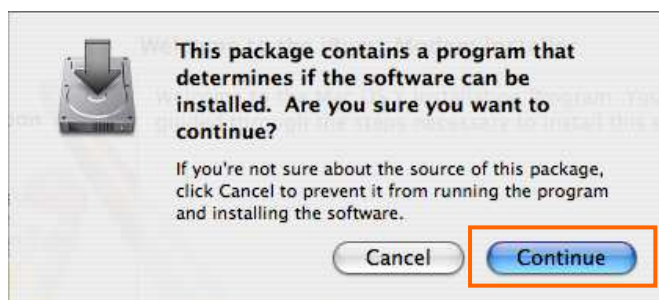
Don't connect the iBurst Terminal with your PC through a USB cable until completion of installation.

2. Turn your PC on and login as an administrative user.
3. Insert the Software Utility CD provided by the network operator into your CD-ROM drive; or execute the appropriate installation software.

NOTE: If the window shown below appears, click "Click the lock to make changes".



4. In case of version 10.3 or later, the confirmation message shown below will appear.
Click **[Continue]** button.



5. In case of version 10.2 or older, "Authenticate" dialog will appear.
Enter an administrator name and password, and then click the **[OK]** button.



6. Click the **[Continue]** button.

