

# ***iBurst Terminal User's manual***

***For Mac OS X 10.4/10.5***



<b>Approved</b>	<b>Checked</b>	<b>Designed</b>
<b>Koyama</b>	<b>Yamamoto</b>	<b>Uetani</b>

<b>Reference:</b>	<b>S40T-EE-006</b>
<b>Revision:</b>	<b>1.00</b>
<b>Date:</b>	<b>October 28, 2008</b>

Revision History

Revision	Author	Date	Detail
1.00	Uetani	Oct. 28, 2008	First Edition

Copyright © Kyocera Corporation 2006 - 2008

# CONTENTS

---

<b>Safety Precautions on iBurst Terminal .....</b>	<b>4</b>
<b>Chapter 1 Introduction .....</b>	<b>6</b>
<b>Components List.....</b>	<b>7</b>
<b>Requirements on your PC .....</b>	<b>7</b>
<b>Outlook of iBurst Terminal .....</b>	<b>7</b>
<b>Indicators.....</b>	<b>8</b>
<b>Outlook to use the iBurst Terminal.....</b>	<b>8</b>
<b>Chapter 2 Setup Procedure.....</b>	<b>9</b>
<b>Installation for Mac OS X.....</b>	<b>10</b>
<b>Connection Settings for Mac OS X 10.4.....</b>	<b>14</b>
<b>Connection Settings for Mac OS X 10.5.....</b>	<b>18</b>
<b>Chapter 3 Utility Software .....</b>	<b>24</b>
<b>Utility Software on Mac OS X.....</b>	<b>25</b>
<b>Chapter 4 Uninstallation.....</b>	<b>32</b>
<b>Uninstallation for Mac OS X.....</b>	<b>33</b>
<b>Appendix .....</b>	<b>35</b>
<b>Maximum data rate on Mac .....</b>	<b>36</b>
<b>FCC Compliance Statement.....</b>	<b>36</b>
<b>FCC RF Radiation Exposure Statement.....</b>	<b>37</b>

## Safety Precautions on iBurst Terminal

- Things you must know
  - When using the product, use it correctly according to the safety precautions.
  - The product uses particular radio frequency band tuned for the network operator.
  - The safety precautions, hardware, software, and the design of the product may be changed in the future without any announcement to the customers.
  
- About use restriction
  - The product is designed as an OA apparatus for home use. Please use it neither in the medical apparatus directly to affect a human life, nor the system of which very high reliability is required.
  - Do not use the product in the zone where the wireless machines are forbidden, such as an airplane and a hospital. An electric device and medical apparatus are affected and it becomes the cause of the accident.
  
- About Qualification
  - Our company does not take any responsibility about the damage produced by use under the conditions such as natural disasters, earthquake, flood, fires, misuse by intent or carelessness or other than the responsibility of our company.
  - Our company does not take any responsibility about the damage produced by external factor, failure, malfunction, and fault of product, such as loss of enterprise profits, enterprise discontinuation, change and disappearance of the contents of memory etc.
  - Our company takes no responsibility about the damage produced by not keeping the written contents of an owner's manual.
  - Our company takes no responsibility about the damage produced from incorrect operation in combination with the connection apparatus and software in which our company is not participating etc.

- 
- 
- iBurst™ is a registered trademark of ArrayComm, Inc.
  - Windows and Windows Vista are registered trademarks of Microsoft Corporation.
  - Mac OS X is a registered trademark of Apple Inc.
  - In addition, the name of the software carried in this document and peripheral equipment is each company's trademark, or a registered trademark.

- For your safety

----- **Danger** -----

( If used improperly, may cause death or serious injury. )

- Do not use with an abnormal condition, such as with emission of smoke or odor. It may cause fire or electric shock.
- Do not disassemble or remodel the product. It may cause fire or electrical shock.
- Do not use or place the product at places with high humidity such as in the bath room or near the humidifier. It may cause fire or electric shock. And do not touch the product with wet hands.

----- **Warning** -----

( If used improperly, may cause disability or physical damage. )

- Do not give a shock strong against the product, such as dropping and throwing. It becomes the cause of failure. Moreover, do not ride on the product. It may become the cause of an injury.
- Do not put the product under direct sunshine or near equipment with high temperature such as a stove and a heater. It may raise the temperature of the interior and cause fire.
- Do not put the product at places with an extreme fluctuation of temperature, such as near the air conditioner or a heater. The dew condensation may occur in the interior and cause fire, electrical shock, and malfunction.
- Do not put the product at places with oil and steams such as in the kitchen. In addition, do not put it at dusty places and places where metal powder and toxic gas occur. It may cause fire or electric shock.
- Do not place the product on unstable places such as on an unsteady desk or slanted surfaces. In addition, do not put any object on the product. It may lose balance and tumble, or fall and cause injury.
- When the thunder occurs in near, do not use the product and its peripheral equipment. It may become the cause of an electric shock.
- Do not touch the connector pins directly with your hands. Static electricity may affect the components. As static electricity is created from both the cloth and the human body, before putting or removing the product, release static electricity by touching a metal object such as a small cabinet.
- Do not use it in the intense place of vibration. It becomes the cause of failure.

----- **Caution** -----

( If treated improperly, the equipment may not perform or work properly. )

- Do not put the product at low temperature. The product may not function properly.
- Do not put the product on the top of magnetic objects and places where electromagnetic waves occur. This includes electrical appliances, AV, and OA (microwave oven, speaker, TV, radio, fluorescent light, inverter air conditioner, and electric kitchen appliances). The product will not be able to make communication properly if effected by magnetism or electronic noise. Putting the product near TV or radio may cause RF receive error.
- The product lifetime may shorten if used at places with hydrogen sulfide such as at a hot spring.
- Data communication will be disabled or a data file may corrupt if the PC is turned off or the product is separated from the PC during the communication. Important data must be verified against the original data.
- When connecting the product onto PC via USB cable, use the enclosed USB cable.

# Chapter 1

## Introduction

**This chapter describes what should be confirmed before using iBurst Terminal.**

### Components List

The table below shows the list of components. Please confirm items in the package.

USB model

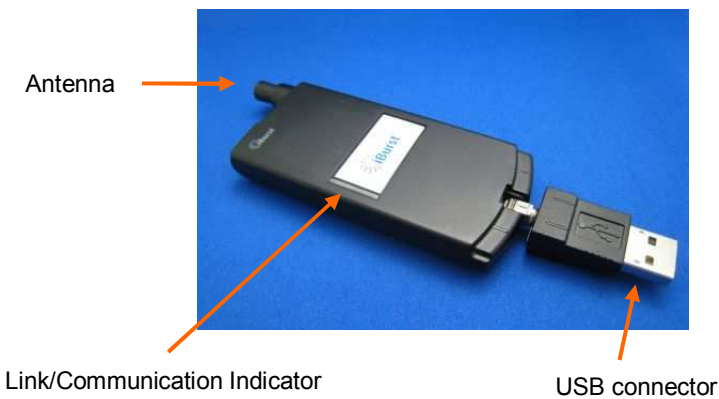
Component	Notes	Q'ty
iBurst Terminal	Unit of USB model *Refer to the picture shown below.	1
USB Extension Cable	Type: USB1.1 Length: 1m	1
Holder	*Refer to the picture shown below.	1

### Requirements on your PC

- version 10.4/10.5 of Mac OS X; or  
PC/AT Compatible PC with Windows Vista/XP (x86 based).  
(Refer to the manual for Windows.)
- 1 USB1.1 port or a later version of USB port.

### Outlook of iBurst Terminal

USB model



Holder

## Indicators

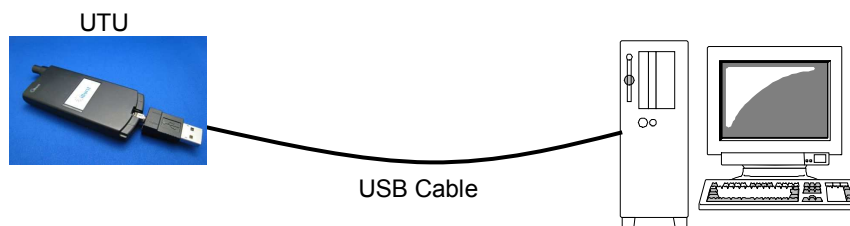
The table below describes meaning of each indicator.

Indicator	State	Meaning
Link/Communication Indicator	OFF	Turned OFF
	Amber	No signal receiving
	Yellow	Weak signal receiving Flashing when communicating.
	Green	Strong signal receiving Flashing when communicating.
	Amber/Yellow	Fault (Flashing)

## Outlook to use the iBurst Terminal

A USB model shall be connected to a USB port of your PC directly or via USB cable. Before connecting the USB interface, you have to install iBurst software which includes device drivers. Please read through every sections related with the operating system for details.

### USB Connection





# Chapter 2

## Setup Procedure

**This chapter describes how to install iBurst software, then guides you how to make a network connection so as to use data communication service.**

## Installation for Mac OS X

---

### NOTE:

Package lineup of the installation software are for Mac OS X 10.4 and 10.5. Please choose an appropriate package according to OS version and processor type on your PC. If you attempt to install a wrong package, installation will be rejected.

### NOTE:

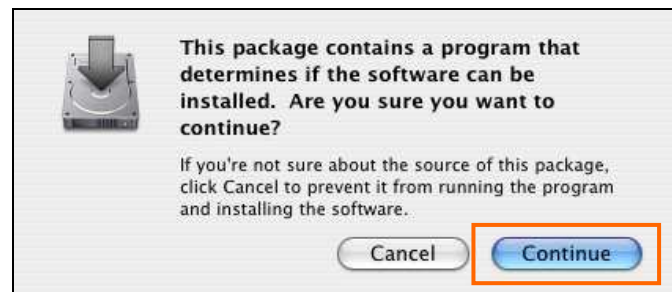
All screen copies in this section are captured on Mac OS X 10.4 if not mentioned.

1. Make sure to disconnect the iBurst Terminal with your PC.

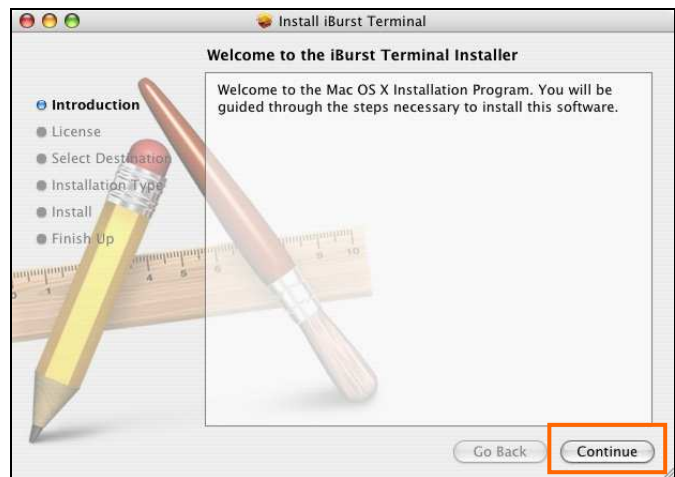
### ATTENTION:

**Don't connect the iBurst Terminal with your PC until completion of installation.**

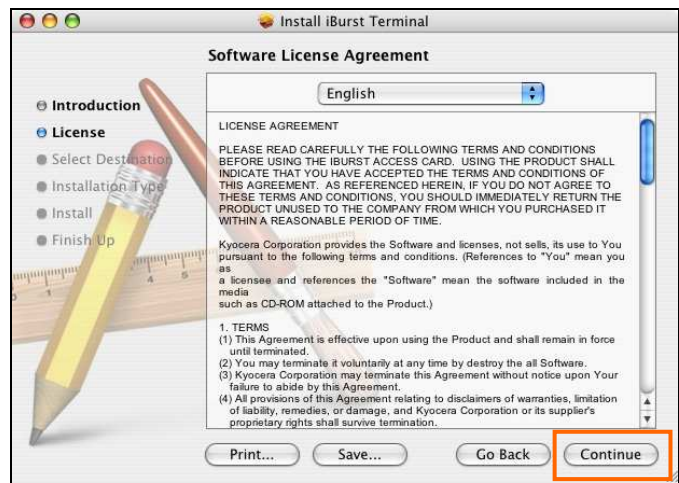
2. Turn your PC on and login as an administrative user.
3. Insert the Software Utility CD provided by the network operator into your CD-ROM drive; or execute the appropriate installation software.
4. If the confirmation message shown below appears, click [Continue] button.



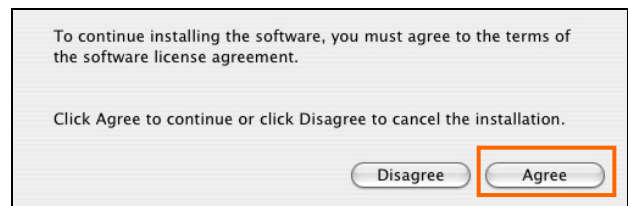
5. Click the **[Continue]** button.



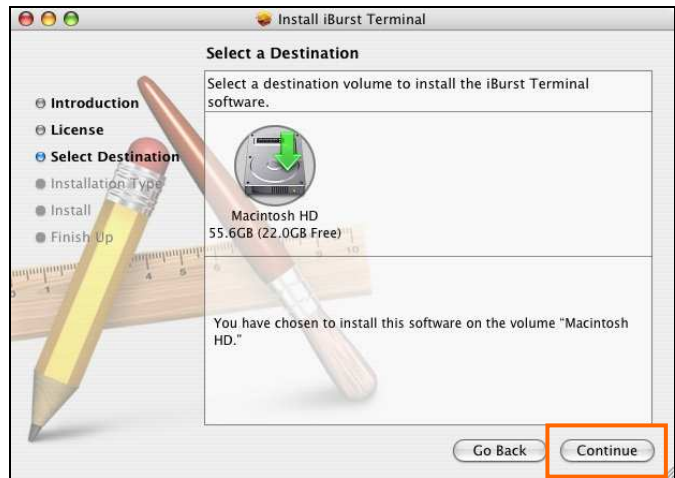
6. Click the **[Continue]** button.



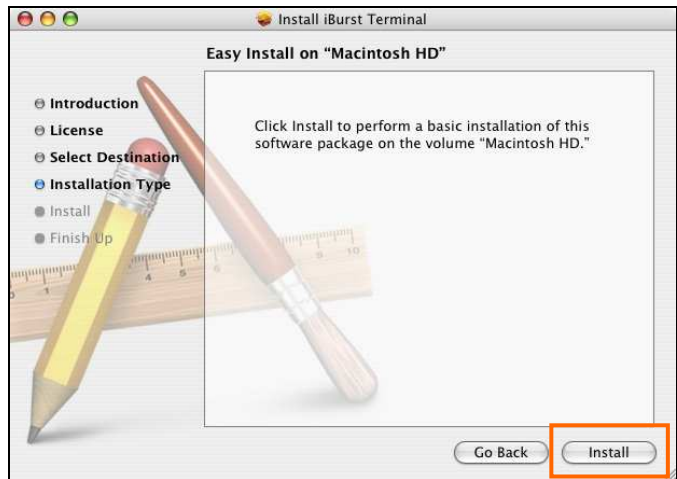
7. The following dialog will appear, click the **[Agree]** button.



8. Select a destination disk, and then click the [Continue] button. In case of 10.5, this window may be skipped.



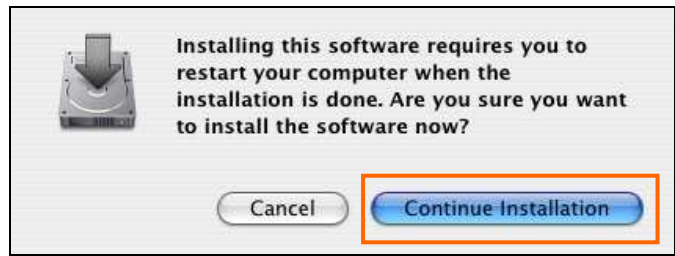
9. Click the [Install], or [Upgrade], button after appearing dialog window as shown below.



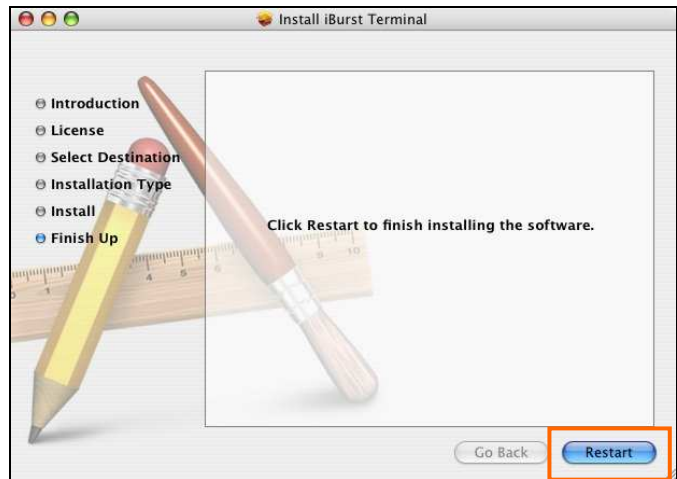
**NOTE:** Authentication dialog will appear at here. Fill an administrator name and password, and then click the [OK] button.



10. Click the [Continue installation] button.



11. When finish installing, the dialog shown below will appear. Click the [Restart] button.



12. To connect to the Internet, jump to the page listed below depending on Mac OS X version.

Mac OS X 10.4 → page 14

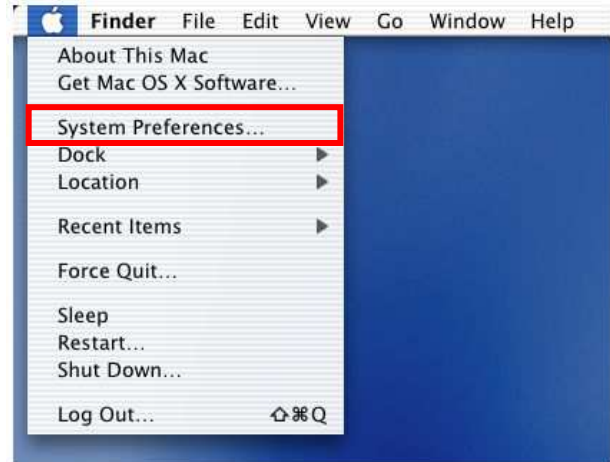
Mac OS X 10.5 → page 18

## Connection Settings for Mac OS X 10.4

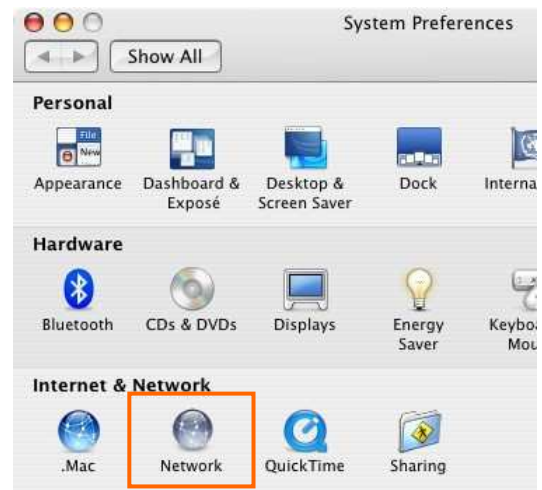
1. Make sure to connect the iBurst Terminal with your PC.

**NOTE:** The iBurst icon on the dock will be varied when a UT recognized via USB. See page 31.

2. Select [System Preferences...] on the Apple menu.



3. Click [Network] in the [System Preferences] window.



4. After the 1st connection with the iBurst Terminal, you will find the pop-up shown below. Take note the name of the new port. Click [OK].



5. Click on the drop down menu of the [Show]; and  
Select [Ethernet Adaptor (en XX)] indicated in the previous step.

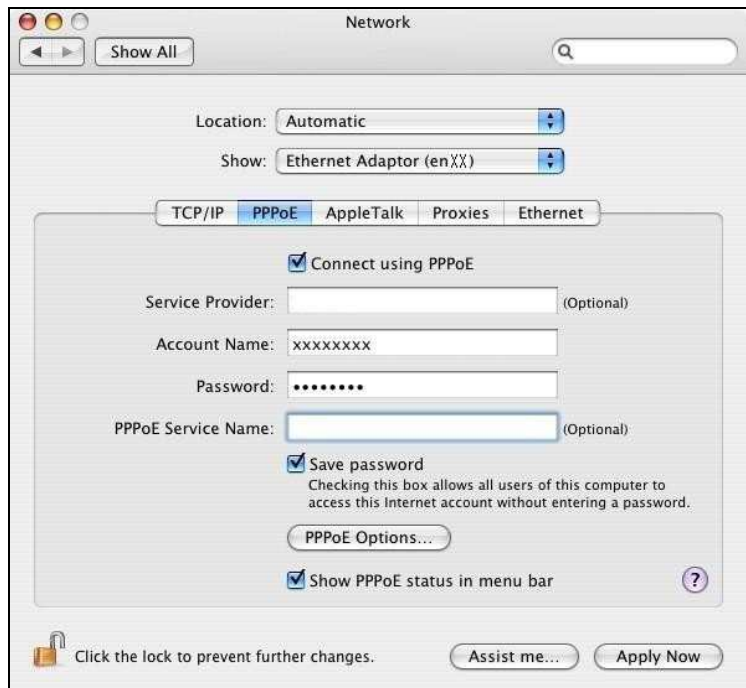
**NOTE:** The 'XX' in the "en XX" is the port number and it may be the biggest one among them when 1st connection.

Additionally, set as follows.

- Select the [PPPoE] tab.
- Check [Connect using PPPoE].
- Enter [Account Name] provided by the network operator.
- Enter [Password] provided by the network operator.
- Check [Save password] If you require the computer to remember your password.
- Check [Show PPPoE status in menu bar].

**NOTE:** If uncheck this option, you cannot see the icon described in the step 9 and 10.

- And then, click [PPPoE Options...]



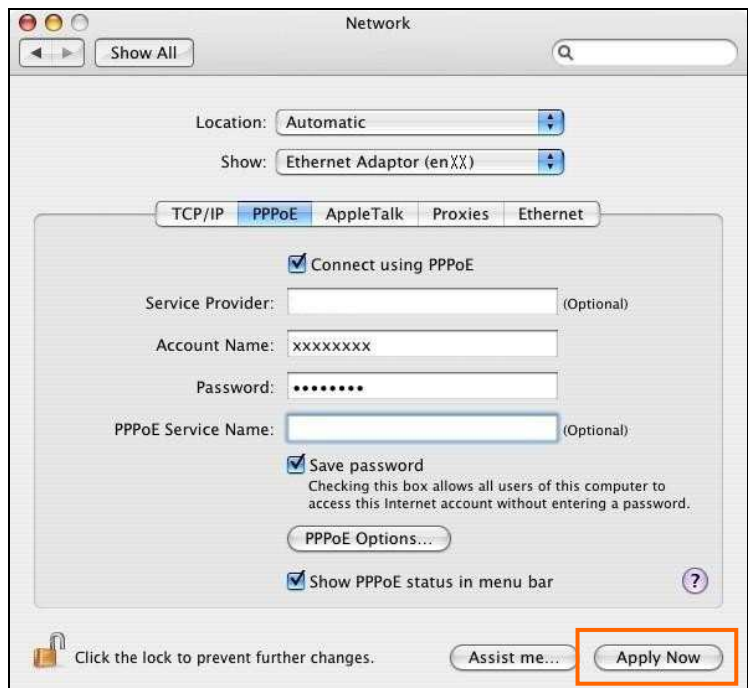
- On the PPPoE Options dialog, set any if required and click [OK].

**NOTE:**

If you don't enable "Connect automatically when needed", you have to make a PPPoE connection following the procedure described in the next page every when you want to connect to the Internet.



- Click the [Apply Now] button.

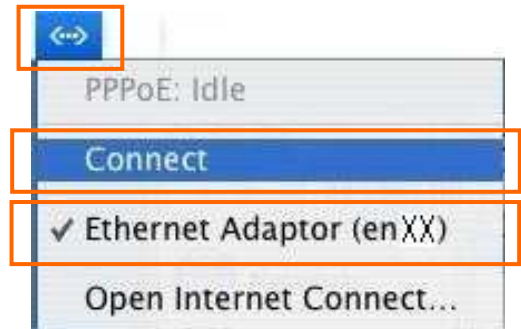


- At this point, the connection configuration is completed. When you open any internet application software, e.g. a web browser, the internet connectivity will be activated automatically.



**NOTE:** The step below is for easy connection/disconnection of PPPoE session manually.

- Click the <---> icon at the top right of screen, and select the Ethernet Adaptor you chose in step 5 as the default network adaptor. And then, click <---> again and click [Connect] to start connecting or click [Disconnect] to clear connection.

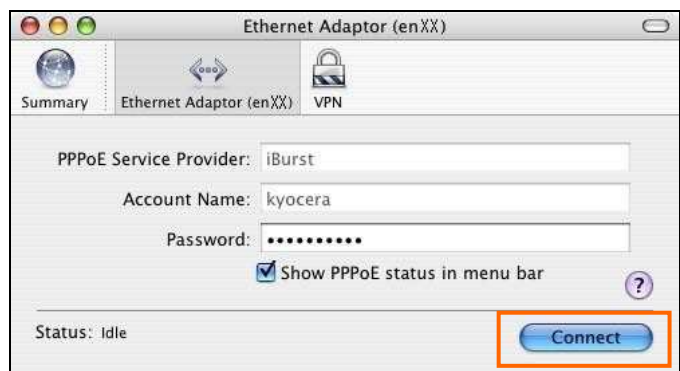


**NOTE:** The steps below is to connect/disconnect PPPoE session manually on “Internet Connect” dialog.

- Click the <---> icon at the top right of screen, and choose [Open Internet Connect]



- Select [Ethernet Adaptor (en XX)] you chose in step 5 and click the [Connect] or [Disconnect].



**NOTE:** In case that there are many network adaptors, you can find the adapter by expanding icon array, by clicking “>>”, at the top of the dialog.

## Connection Settings for Mac OS X 10.5

---

1. Make sure to connect the iBurst Terminal with your PC.

**NOTE:** The iBurst icon on the dock will be varied when a UT recognized via USB. See page 31.

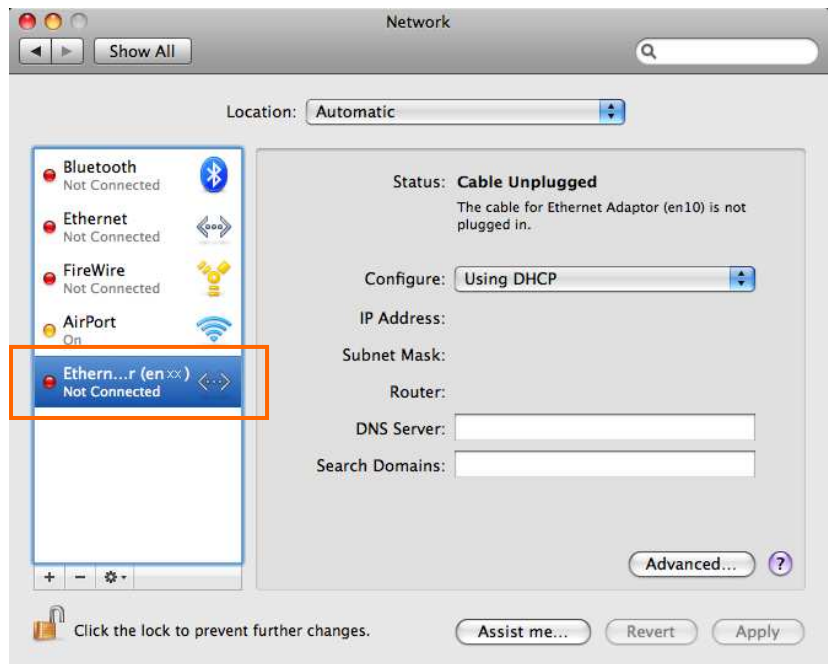
2. Select [System Preferences...] on the Apple menu.



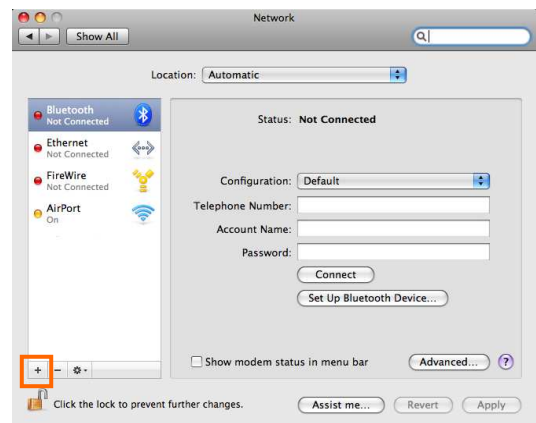
3. Click [Network] in the [System Preferences] window.



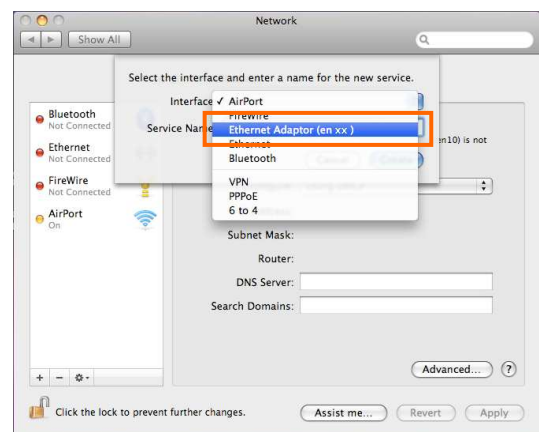
4. You will find a new “Ethernet Adaptor (enXX)” in the left side of the window. Select it.



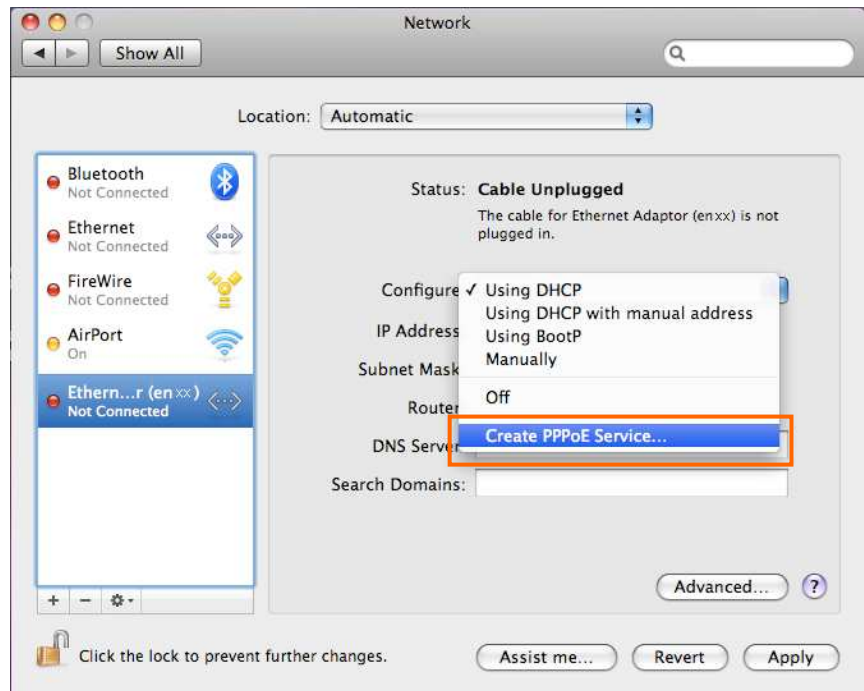
**NOTE:** If you cannot find any “Ethernet Adaptor (enXX)” on the window, Click “+” button; and...



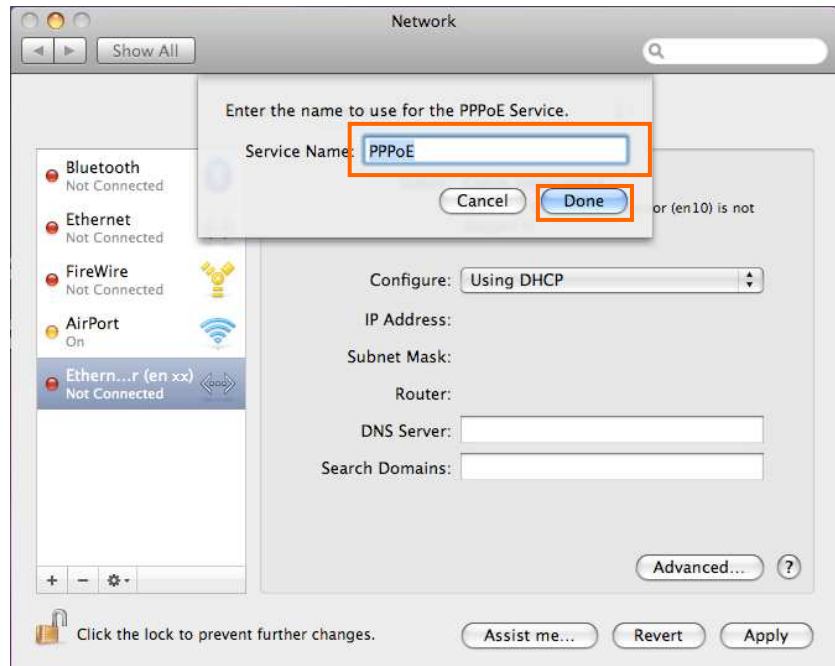
Click on the drop down menu of the [Interface]. You will find “Ethernet Adaptor (en XX)”. And then, select it and click [Create].



5. Click on the drop down menu of the [Configure], and select [Create PPPoE Service...].



6. Specify a [Service Name]. “PPPoE” is the default name but you can change it. And then, click [Done].



7. The service name specified above will be listed in the left side of the window. Select it and configure parameters as follows.

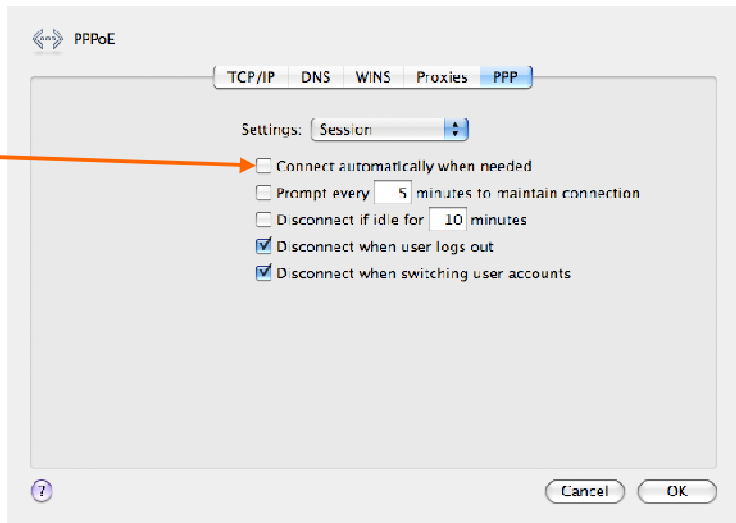


- Enter [Account Name] provided by the network operator.
  - Enter [Password] provided by the network operator.
  - Check [Remember this password] if you require the computer to remember your password.
  - Check [Show PPPoE status in menu bar].
- NOTE:** If uncheck this option, you cannot see the icon described in the step 11 and 12.
- And then, click [Advanced...]

8. Click [PPP] tab. Set any if required and click [OK].

**NOTE:**

If you don't enable "Connect automatically when needed", you have to make a PPPoE connection following the procedure described in the next page every when you want to connect to the Internet.



9. Click the [Apply] button.



10. At this point, the connection configuration is completed. When you open any internet application software, e.g. a web browser, the internet connectivity will be activated automatically.

**NOTE:** The step below is for easy connection/disconnection of PPPoE session manually.

- Click the <---> icon at the top right of screen, and select [Connect “PPPoE”] to start connecting or click [Disconnect “PPPoE”] to clear connection. Above-mentioned “PPPoE” must be the name specified in step 6.

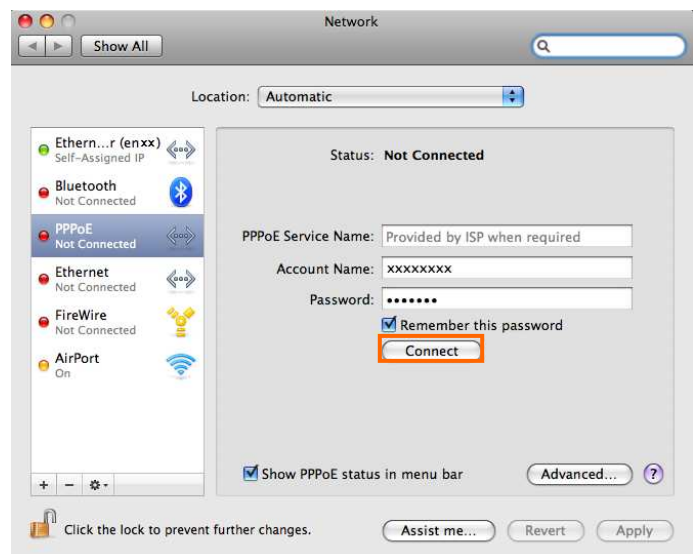


**NOTE:** The steps below is to connect/disconnect PPPoE session manually on “Network” dialog.

- Click the <---> icon at the top right of screen, and choose [Open Network Preferences]



- Select “PPPoE”, which must be the name specified in step 6, in the left side of the window and click the [Connect] or [Disconnect].



# Chapter 3

## Utility Software

**This chapter describes the features and usage of the Utility Software for iBurst Terminal.**



## Utility Software on Mac OS X

---

To open the utility dialog.

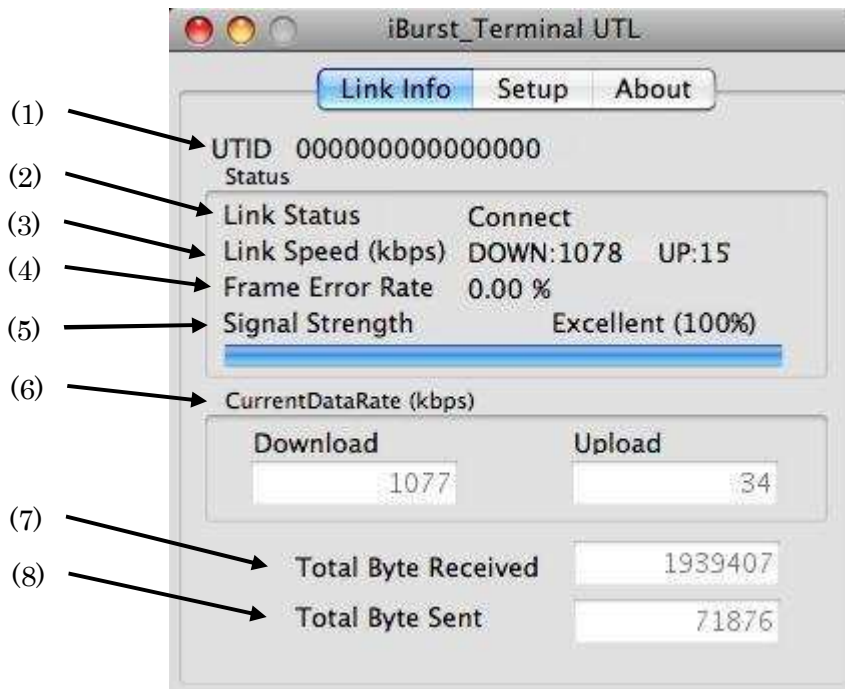
1. Click the iBurst Terminal UTL icon on the Dock.



2. The iBurst\_Terminal UTL dialog appears as shown in next page.

**Link Info Pane**

[Link Info] pane indicates several communication statuses about iBurst Terminal.



The following descriptions are about each item on the pane.

**(1) UTID**

UTID is an identifier assigned to the iBurst Terminal. This will be used for maintenance support.

**(2) Link Status**

This indicates current link status between the iBurst Terminal and the access point.

**Connect :** The link is connected.

**No Connect :** The iBurst Terminal is connected with your PC but the link is not connected.

**No iBurst Terminal :** There is no iBurst Terminal connected with your PC.

**(3) Link Speed**

This indicates current bandwidth allocated automatically between the iBurst Terminal and a radio base station.

**(4) Frame Error Rate**

This indicates current Frame Error Rate on the downlink air.

**(5) Signal Strength**

This indicates current signal strength of the received radio signal. The signal bar indicates the level visually in percentage and the status words are categorized according to the percent level as follows.

<b>No Signal :</b>	0%
<b>Poor :</b>	In the range of 1 to 24%
<b>Fair :</b>	In the range of 25 to 49%
<b>Good :</b>	In the range of 50 to 74%
<b>Excellent :</b>	In the range of 75 to 100%

**(6) Current Data Rate**

This indicates current throughputs on both directions.

**(7) Total Byte Received**

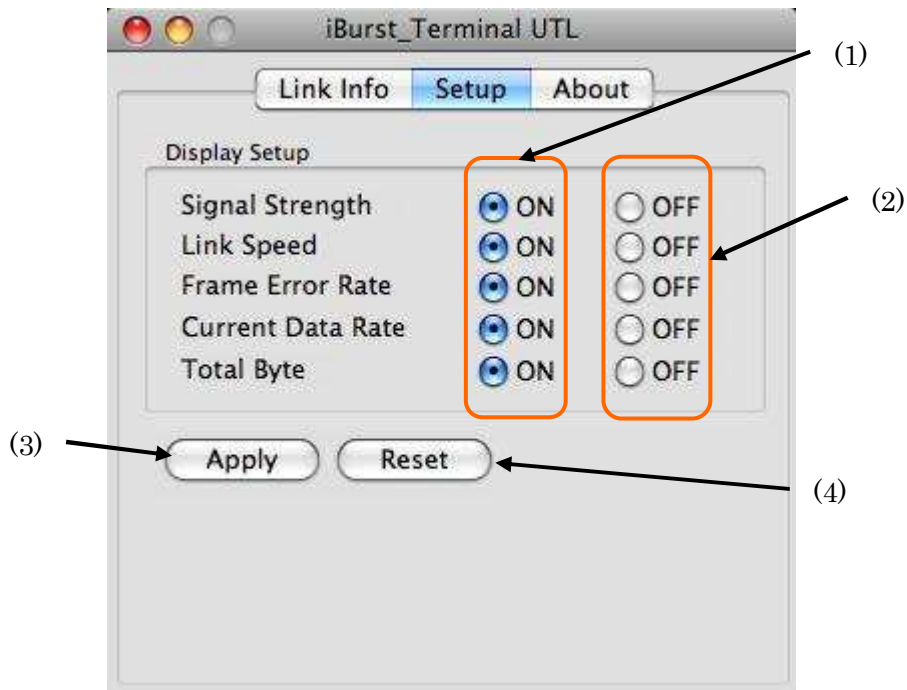
Total Byte Received indicates the total number of bytes received from the access point since the communication link is established.

**(8) Total Byte Sent**

Total Byte Sent indicates the total number of bytes transmitted to the access point since the communication link is established.

## Setup Pane

[Setup] pane can be displayed in the main dialog window by clicking the [Setup] tab. This pane controls enabling/disabling to show each indicator on the [Link Info] pane.

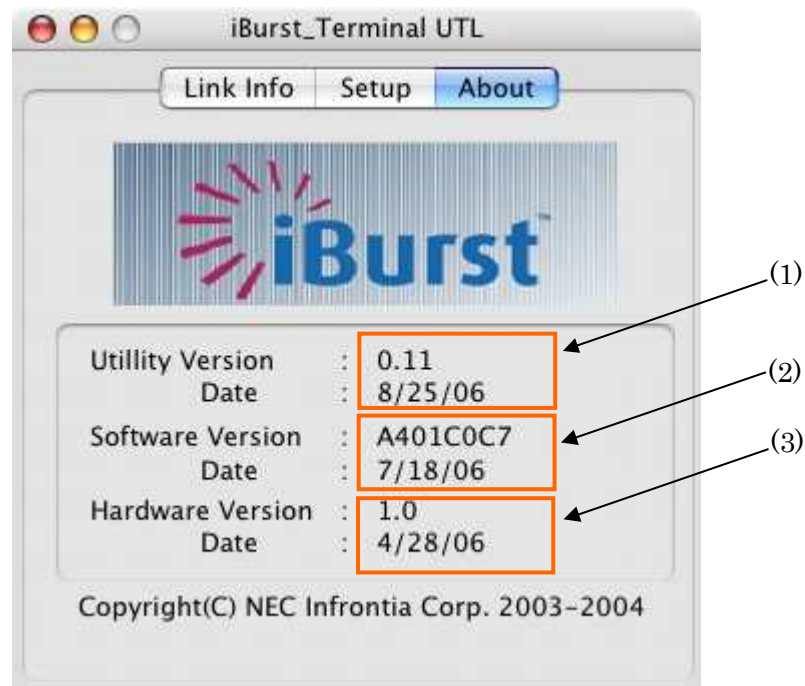


The following descriptions are about each item on the pane.

- (1) Selecting [ON] enables the corresponding indicator on the Link Info pane. All are [ON] as the default.
- (2) Selecting [OFF] disables the corresponding indicator on the Link Info pane.
- (3) [Apply] button activates every setting above.
- (4) [Reset] button enables and activates all settings above.

## About Pane

[About] pane shows the version information about software, hardware and copyrights.

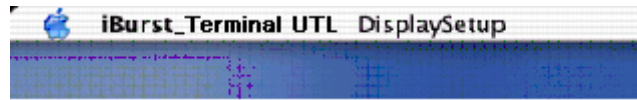


The following descriptions are about each item on the pane.

- (1) This shows the version number and the build date of this Utility Software.
- (2) This shows the firmware version and the build date of the iBurst Terminal.
- (3) This shows the hardware version and the manufactured date of the iBurst Terminal.

## Menu Bar

It will be displayed while the iBurst Terminal utility is active.



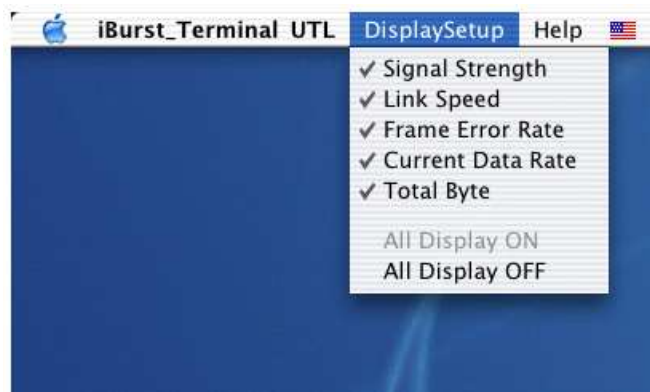
### (1) iBurst\_Terminal UTL menu

The menu is used to quit the iBurst Terminal utility or to perform other operations.



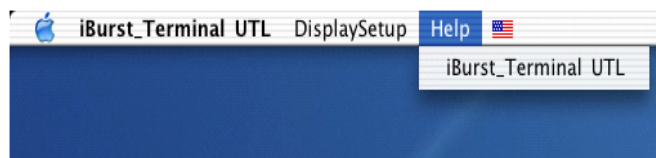
### (2) DisplaySetup menu

The menu is used to control enabling/disabling to show each indication on the [Link Info] pane. The function is the same as the [Setup] pane of the dialog.



### (3) Help menu







The [Help] window will appear when help menu is selected.



### Icon Display on the Dock

When the Utility Software for iBurst Terminal is running, an icon of the Utility Software will be displayed in the task tray of the computer monitor according to communication status of the iBurst Terminal.

The table below shows icons with status descriptions.

Icon	Activities on iBurst Terminal
	iBurst Terminal is not connected with your PC.
	iBurst Terminal is connected with your PC, but No Signal received.
	iBurst Terminal is connected with your PC, and Signal Strength is Poor.
	iBurst Terminal is connected with your PC, and Signal Strength is Fair.
	iBurst Terminal is connected with your PC, and Signal Strength is Good.
	iBurst Terminal is connected with your PC, and Signal Strength is Excellent.

# Chapter 4

# Uninstallation

**This chapter describes how to uninstall iBurst software.**



## Uninstallation for Mac OS X

**NOTE:** All screen copies in this section are captured on Mac OS X 10.4.

1. Close all programs that are currently running.
2. Disconnect the iBurst Terminal with your PC.
3. Open the folder [Applications/iBurst Terminal/Uninstall], then double click the script file [uninst\_iburst\_terminal.command].



4. The terminal window shown below will appear. Type administrator's [password] and press [Enter] key.

```

Terminal — sh — 80x24
/Applications/iBurst\ Terminal/Uninstall/uninst_iburst_terminal.command; exit
Welcome to Darwin!
-bash: export: `=:0.0`: not a valid identifier
waiyaresuburodobandos-computer:~ WBB$ /Applications/iBurst\ Terminal/Uninstall/u
ninst_iburst_terminal.command; exit

#### Warning ####
You would have a problem for iBurst Terminal uninstallation, if you will change
MAC Terminal property during uninstallation.
Please do not change MAC Terminal property during uninstallation.

Password: 

```

5. Press [y] or [n] key, and Press [Enter] key.

```

Terminal — sh — 80x24
/Applications/iBurst\ Terminal/Uninstall/uninst_iburst_terminal.command; exit
Welcome to Darwin!
-bash: export: `=:0.0': not a valid identifier
waiyaresuburodobandos-computer:~ WBB$ /Applications/iBurst\ Terminal/Uninstall/u
ninst_iburst_terminal.command; exit

#### Warning ####
You would have a problem for iBurst Terminal uninstallation, if you will change
MAC Terminal property during uninstallation.
Please do not change MAC Terminal property during uninstallation.

Password:

Do you remove the install-logging file? [Y/n] : y

```

6. Press [y] and [Enter] key to restart your computer.

```

Terminal — sh — 80x24
/Applications/iBurst\ Terminal/Uninstall/uninst_iburst_terminal.command; exit
Welcome to Darwin!
-bash: export: `=:0.0': not a valid identifier
waiyaresuburodobandos-computer:~ WBB$ /Applications/iBurst\ Terminal/Uninstall/u
ninst_iburst_terminal.command; exit

#### Warning ####
You would have a problem for iBurst Terminal uninstallation, if you will change
MAC Terminal property during uninstallation.
Please do not change MAC Terminal property during uninstallation.

Password:

Do you remove the install-logging file? [Y/n] : y

#####
## The iBurst Terminal Software has been un-installed. ##
## Please reboot to complete the un-installation.      ##
#####

Are you sure you want to restart your computer now ? [Y/n] : y

```

**ATTENTION :** Don't change any properties of MAC Terminal while uninstallation. Otherwise you would have a problem on uninstalling of iBurst Terminal software.

# Appendix

## Maximum data rate on Mac

---

iBurst Terminal would not perform maximum data rate when it connects with Mac PC.

This is obviously caused by Mac OS.

And typical data rate connecting with Mac is 800Kbps at downlink and 240Kbps at uplink.

## FCC Compliance Statement

---

**This device complies with Part 15 of the FCC Rules. Operation is subject to the following two conditions: (1) this device may not cause harmful interference, and (2) this device must accept any interference received, including interference that may cause undesired operation.**

### FCC WARNING

Changes or modifications not expressly approved by the party responsible for compliance could void the user's authority to operate the equipment.

### NOTICE

This equipment has been tested and found to comply with the limits for a Class B digital device, pursuant to part 15 of the FCC rules. These limits are designed to provide reasonable protection against harmful interference in a residential installation. This equipment generates, uses and can radiate radio frequency energy and, if not installed and used in accordance with the instructions, may cause harmful interference to radio communications. However, there is no guarantee that interference will not occur in a particular installation. If this equipment does cause harmful interference to radio or television reception, which can be determined by turning the equipment off and on, the user is encouraged to try to correct the interference by one or more of the following measures:

- Reorient or relocate the receiving antenna.
- Increase the separation between the equipment and receiver.
- Connect the equipment into an outlet on a circuit different from that to which the receiver is connected.
- Consult the dealer or an experienced radio/TV technician for help.

### CAUTION

This equipment has been tested for compliance with FCC RF exposure limits in the laptop computer(s) configurations with a USB port and can be used in laptop computers with substantially similar physical dimensions, construction, and electrical and RF characteristics. And also this equipment has been tested with original antenna.

Note

If this equipment is intended for use in any other portable device, you are responsible for separate approval to satisfy the SAR requirements of Part 2.1093 of FCC rules.

**FCC RF Radiation Exposure Statement**

---

This transmitter must not be co-located or operated in conjunction with any other antenna or transmitter.

The available scientific evidence does not show that any health problems are associated with using low power wireless devices. There is no proof, however, that these low power wireless devices are absolutely safe. Low power Wireless devices emit low levels of radio frequency energy (RF) in the microwave range while being used. Whereas high levels of RF can produce health effects (by heating tissue), exposure to low-level RF that does not produce heating effects causes no known adverse health effects. Many studies of low-level RF exposures have not found any biological effects. Some studies have suggested that some biological effects might occur, but such findings have not been confirmed by additional research. UTU03-1890F-US-A has been tested and found to comply with FCC radiation exposure limits set forth for an uncontrolled equipment and meets the FCC radio frequency (RF) Exposure Guidelines in Supplement C to OET65.

[The end of this manual]