

iBurst Terminal User's manual

For Windows Vista/XP



Approved	Checked	Designed
Koyama	Yamamoto	Uetani

Reference:	S40T-EE-005
Revision:	1.00
Date:	October 28, 2008

Revision History

Revision	Author	Date	Detail
1.00	Uetani	Oct 28, 2008	First Edition

Copyright © Kyocera Corporation 2006 - 2008

CONTENTS

Safety Precautions on iBurst Terminal	4
Chapter 1 Introduction	6
Components List.....	7
Requirements on your PC	7
Outlook of iBurst Terminal	7
Indicators.....	8
Outlook to use the iBurst Terminal.....	8
Chapter 2 Setup Procedure.....	9
Installation for Windows Vista/XP.....	10
Connection Settings for Windows Vista	14
Creating a connection and starting the connection	14
To disconnect	17
To connect again	18
Tips for useful connection settings	20
Connection Settings for Windows XP	22
Creating a connection.....	22
To connect	26
To disconnect	27
Tips for useful connection settings	28
Chapter 3 Utility Software	30
Utility Software on Windows.....	31
Chapter 4 Uninstallation.....	37
Uninstallation for Windows Vista.....	38
Uninstallation for Windows XP.....	41
Appendix	44
Utility software will be not uninstalled when back-to-date on Windows Vista	45
Trouble when disabling a built-in wireless LAN device on Windows PC	45
FCC Compliance Statement.....	45
FCC RF Radiation Exposure Statement.....	46

Safety Precautions on iBurst Terminal

- Things you must know
 - When using the product, use it correctly according to the safety precautions.
 - The product uses particular radio frequency band tuned for the network operator.
 - The safety precautions, hardware, software, and the design of the product may be changed in the future without any announcement to the customers.

- About use restriction
 - The product is designed as an OA apparatus for home use. Please use it neither in the medical apparatus directly to affect a human life, nor the system of which very high reliability is required.
 - Do not use the product in the zone where the wireless machines are forbidden, such as an airplane and a hospital. An electric device and medical apparatus are affected and it becomes the cause of the accident.

- About Qualification
 - Our company does not take any responsibility about the damage produced by use under the conditions such as natural disasters, earthquake, flood, fires, misuse by intent or carelessness or other than the responsibility of our company.
 - Our company does not take any responsibility about the damage produced by external factor, failure, malfunction, and fault of product, such as loss of enterprise profits, enterprise discontinuation, change and disappearance of the contents of memory etc.
 - Our company takes no responsibility about the damage produced by not keeping the written contents of an owner's manual.
 - Our company takes no responsibility about the damage produced from incorrect operation in combination with the connection apparatus and software in which our company is not participating etc.

-
-
- iBurst™ is a registered trademark of ArrayComm, Inc.
 - Windows and Windows Vista are registered trademarks of Microsoft Corporation.
 - Mac OS X is a registered trademark of Apple Inc.
 - In addition, the name of the software carried in this document and peripheral equipment is each company's trademark, or a registered trademark.

- For your safety

----- **Danger** -----

(If used improperly, may cause death or serious injury.)

- Do not use with an abnormal condition, such as with emission of smoke or odor. It may cause fire or electric shock.
- Do not disassemble or remodel the product. It may cause fire or electrical shock.
- Do not use or place the product at places with high humidity such as in the bath room or near the humidifier. It may cause fire or electric shock. And do not touch the product with wet hands.

----- **Warning** -----

(If used improperly, may cause disability or physical damage.)

- Do not give a shock strong against the product, such as dropping and throwing. It becomes the cause of failure. Moreover, do not ride on the product. It may become the cause of an injury.
- Do not put the product under direct sunshine or near equipment with high temperature such as a stove and a heater. It may raise the temperature of the interior and cause fire.
- Do not put the product at places with an extreme fluctuation of temperature, such as near the air conditioner or a heater. The dew condensation may occur in the interior and cause fire, electrical shock, and malfunction.
- Do not put the product at places with oil and steams such as in the kitchen. In addition, do not put it at dusty places and places where metal powder and toxic gas occur. It may cause fire or electric shock.
- Do not place the product on unstable places such as on an unsteady desk or slanted surfaces. In addition, do not put any object on the product. It may lose balance and tumble, or fall and cause injury.
- When the thunder occurs in near, do not use the product and its peripheral equipment. It may become the cause of an electric shock.
- Do not touch the connector pins directly with your hands. Static electricity may affect the components. As static electricity is created from both the cloth and the human body, before putting or removing the product, release static electricity by touching a metal object such as a small cabinet.
- Do not use it in the intense place of vibration. It becomes the cause of failure.

----- **Caution** -----

(If treated improperly, the equipment may not perform or work properly.)

- Do not put the product at low temperature. The product may not function properly.
- Do not put the product on the top of magnetic objects and places where electromagnetic waves occur. This includes electrical appliances, AV, and OA (microwave oven, speaker, TV, radio, fluorescent light, inverter air conditioner, and electric kitchen appliances). The product will not be able to make communication properly if effected by magnetism or electronic noise. Putting the product near TV or radio may cause RF receive error.
- The product lifetime may shorten if used at places with hydrogen sulfide such as at a hot spring.
- Data communication will be disabled or a data file may corrupt if the PC is turned off or the product is separated from the PC during the communication. Important data must be verified against the original data.
- When connecting the product onto PC via USB cable, use the enclosed USB cable.

Chapter 1

Introduction

This chapter describes what should be confirmed before using iBurst Terminal.

Components List

The table below shows the list of components. Please confirm items in the package.

USB model

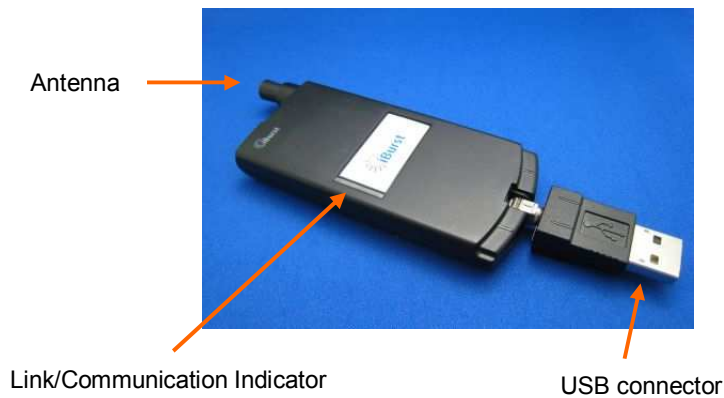
Component	Notes	Q'ty
iBurst Terminal	Unit of USB model *Refer to the picture shown below.	1
USB Extension Cable	Type: USB1.1 Length: 1m	1
Holder	*Refer to the picture shown below	1

Requirements on your PC

- PC/AT Compatible PC with Windows Vista/XP (x86 based); or version 10.4 to 10.5 of Mac OS X. (Refer to the manual for Mac OS X.)
- 1 USB1.1 port or a later version of USB port.

Outlook of iBurst Terminal

USB model



Indicators

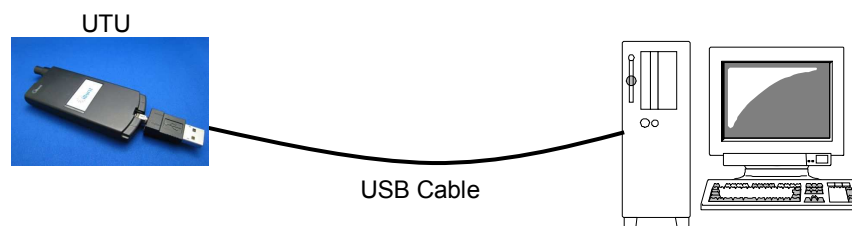
The table below describes meaning of each indicator.

Indicator	State	Meaning
Link/Communication Indicator	OFF	Turned OFF
	Amber	No signal receiving
	Yellow	Weak signal receiving Flashing when communicating.
	Green	Strong signal receiving Flashing when communicating.
	Amber/Yellow	Fault (Flashing)

Outlook to use the iBurst Terminal

A USB model shall be connected to a USB port of your PC directly or via USB cable. Before connecting the USB interface, you have to install iBurst software which includes device drivers. Please read through every sections related with the operating system for details.

USB Connection



Chapter 2

Setup Procedure

This chapter describes how to install iBurst software, then guides you how to make a network connection so as to use data communication service.

Installation for Windows Vista/XP

This section shows the procedure to install iBurst software on your PC for utilizing iBurst Terminal. The procedure shall be done once before using it.

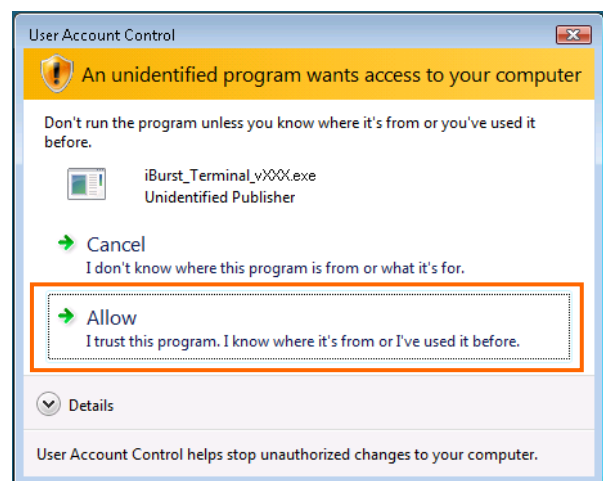
ATTENTION: If you have installed an old version of iBurst software or you updated Windows version, you have to uninstall the existing iBurst software first. Otherwise performance and/or throughput through iBurst Terminal may be restricted.

NOTE: All screen copies in this section are examples on Windows Vista.

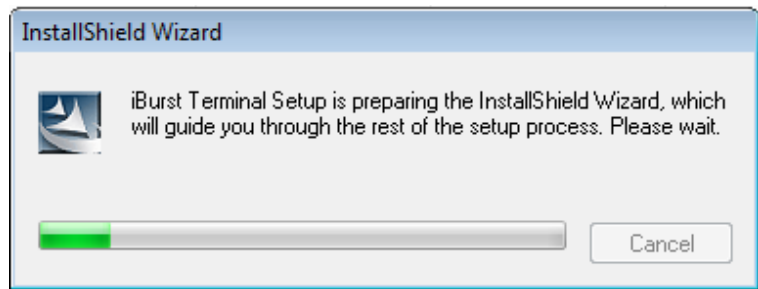
1. Make sure to remove the iBurst Terminal from your PC.

ATTENTION: Don't plug the iBurst Terminal into your PC until completion of installation.

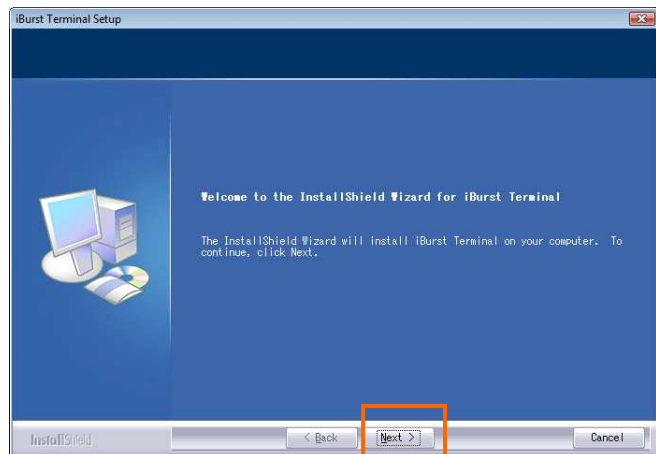
2. Turn your PC on.
3. Insert the Software Utility CD provided by the network operator into your CD-ROM drive; or execute the appropriate installation software.
4. On Windows Vista, click **[Allow]** to proceed installing when Windows prompts [User Account Control].



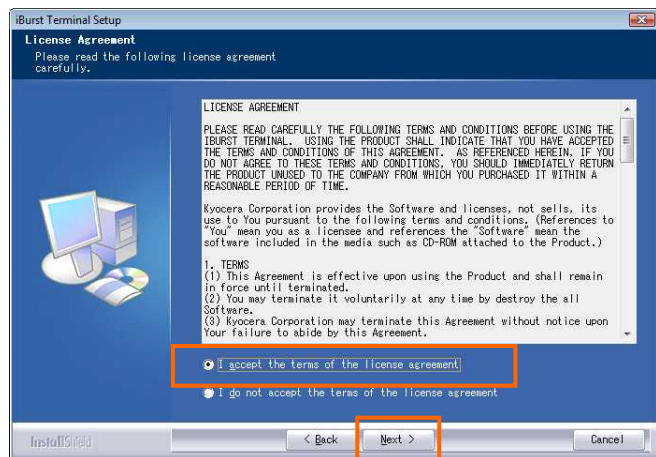
5. The software will show progress of preparation.



6. iBurst Terminal Setup starts. Click the [Next >] button.

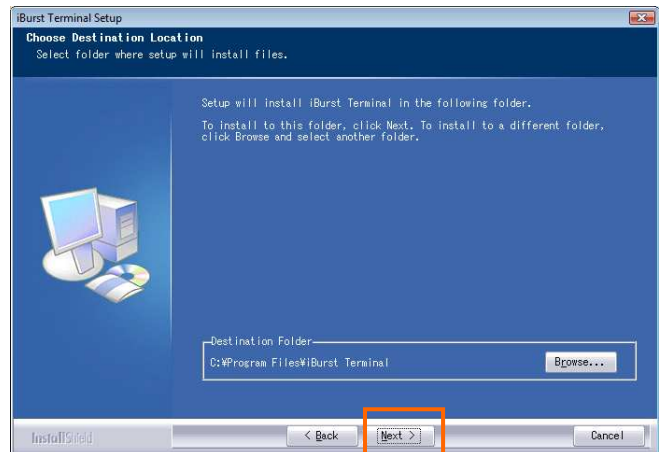


7. Read through the license agreement. If you can agree it, select [I accept the terms the license agreement] and click the [Next >] button.

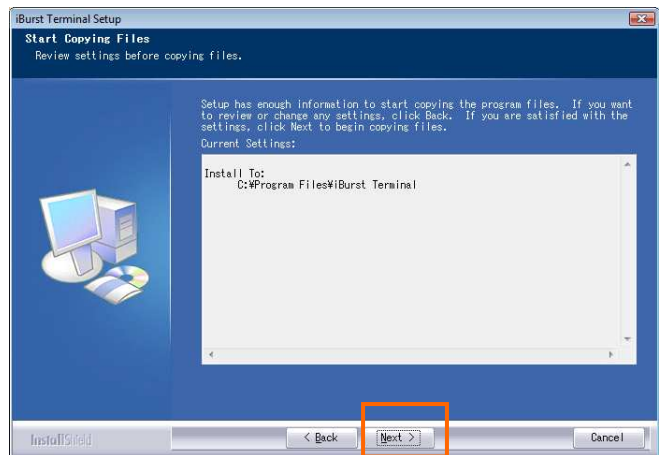


8. Click the [Next >] button after appearing dialog window as shown below.

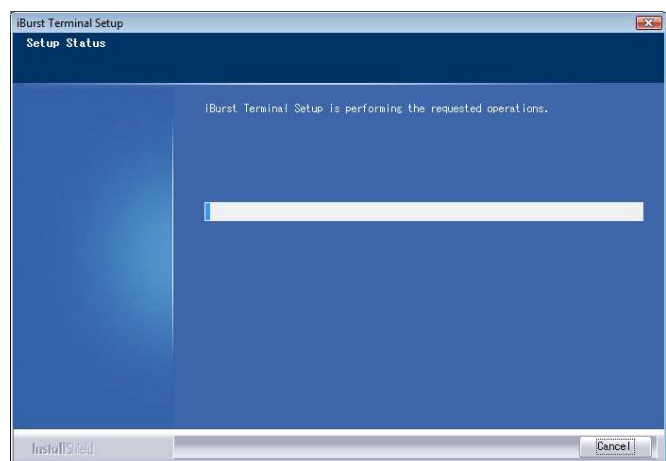
NOTE: To install to a different folder, click [Browse...] and specify another folder.



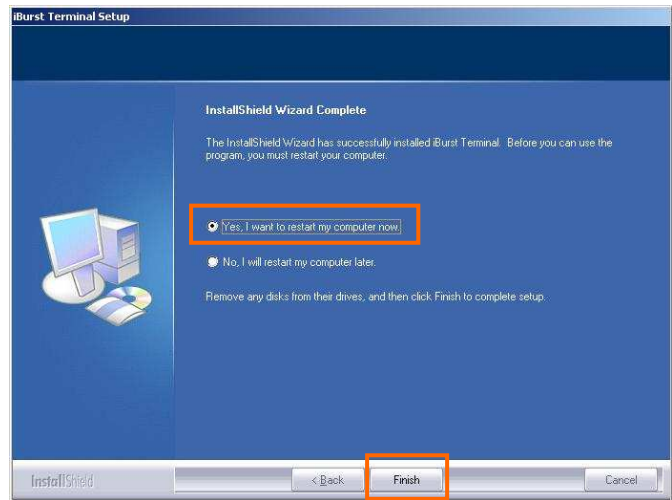
9. Click the [Next >] button.



10. The following dialog window will appear, and installation of software begins.



11. When the installing process finishes, the dialog window shown below will appear. Select **[Yes, I want to restart my computer now]** and click the **[Finish]** button in the dialog window.

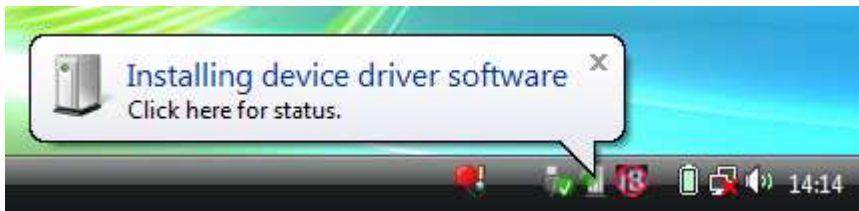


NOTE: Before restarting the PC, you can find an iBurst icon on the task tray.

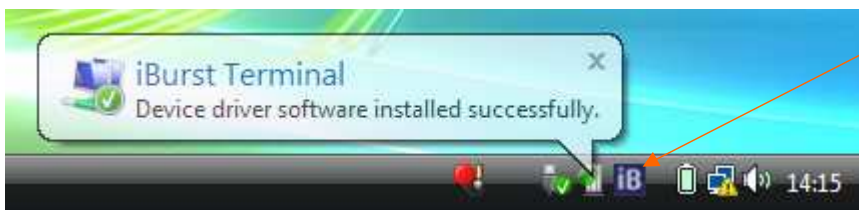
12. After finish of restarting, **plug the iBurst Terminal into an appropriate port.** The iBurst Terminal will be recognized and will be ready to use automatically. Only when the iBurst Terminal is plugged into every port at the first time, you will see installation status on balloon messages as follows.

NOTE: The pictures below are examples on Windows Vista.

A balloon message when Windows detects the iBurst Terminal as a new hardware.



A balloon message when Windows finishes installation of the iBurst Terminal.



The iBurst icon will be varied when a UT recognized

13. To connect to the Internet, jump to the page listed below depending on Windows version.

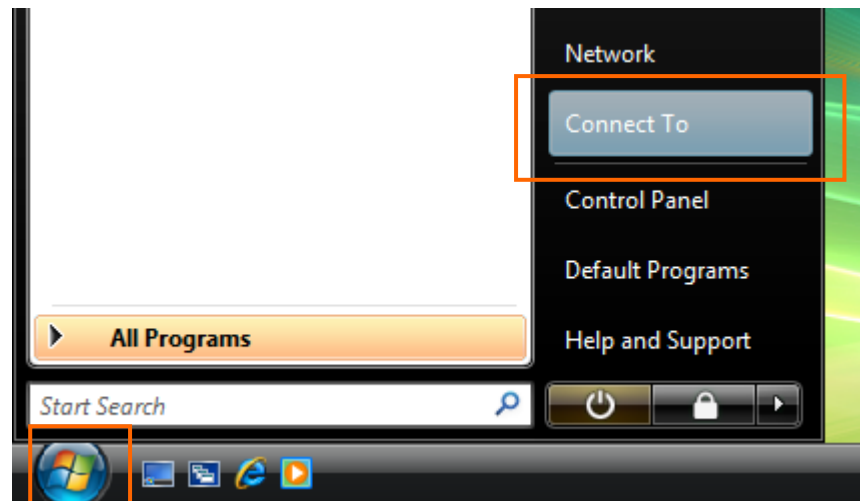
Windows Vista → page 14

Windows XP → page 22

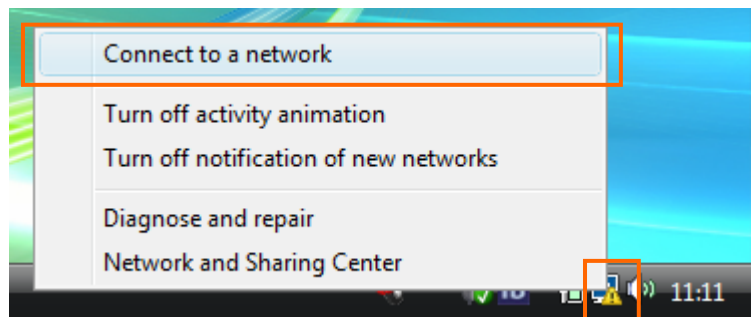
Connection Settings for Windows Vista

Creating a connection and starting the connection

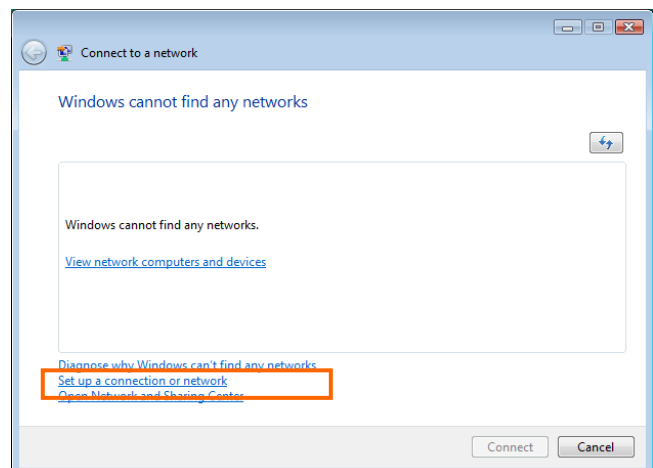
1. Make sure to plug the iBurst Terminal into your PC.
2. Click the [Start] button and click [Connect To] as shown below; **or**



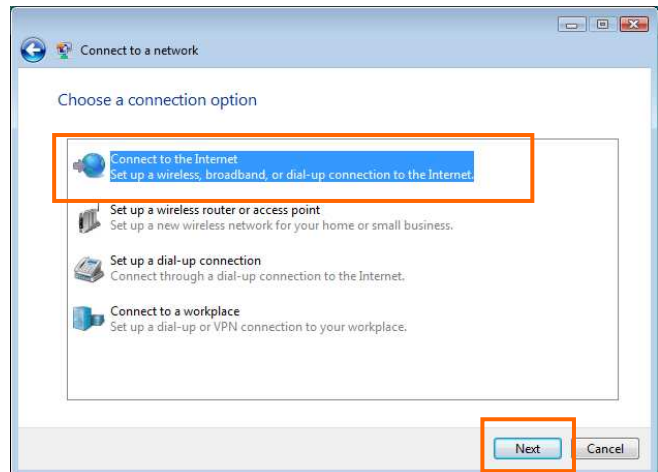
Right click on the network icon at the task tray and select [Connect to a network].



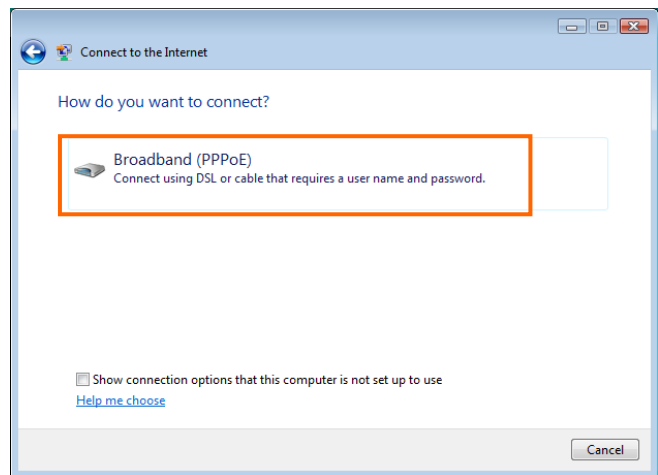
3. Click [Set up a connection or network] in the [Connect to a network] display.



4. Select [Connect to the Internet] and click the [Next] button.

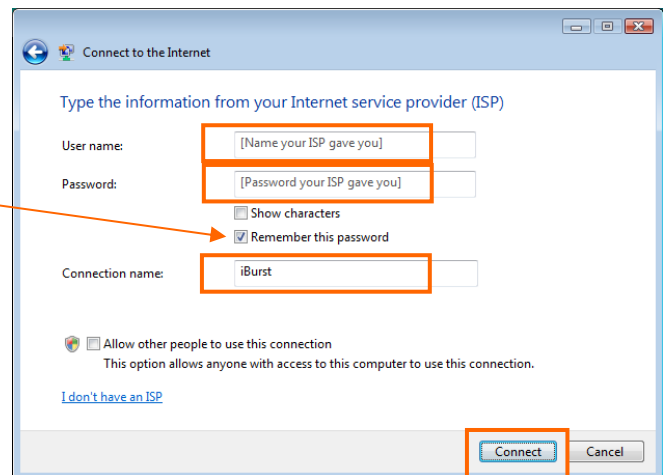


5. Select [Broadband (PPPoE)].

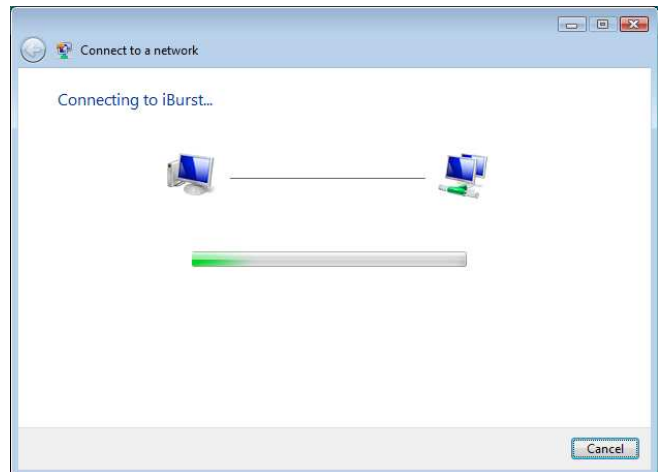


6. Enter user name and password assigned by the internet service provider (ISP) you subscribed. It is recommended to enable [Remember this password]. Any connection name is acceptable but this manual uses [iBurst] as an example of a connection name. It is not recommended to enable [Allow other people to use this connection]. And then, click the [Connect] button.

Enabling it is recommended.



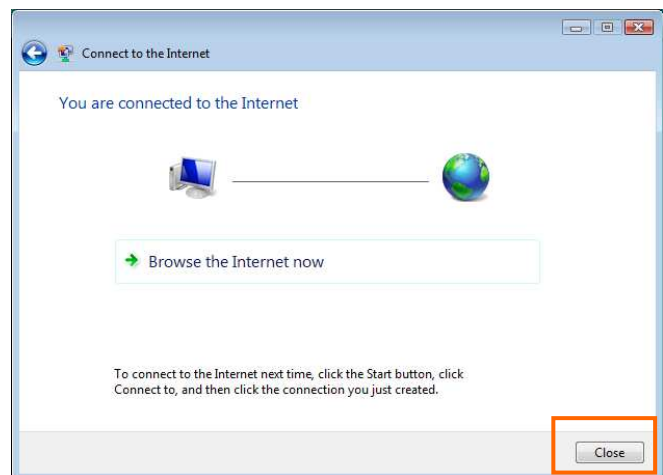
7. The dialog shows [Connecting to <the connection name>...] in several seconds.



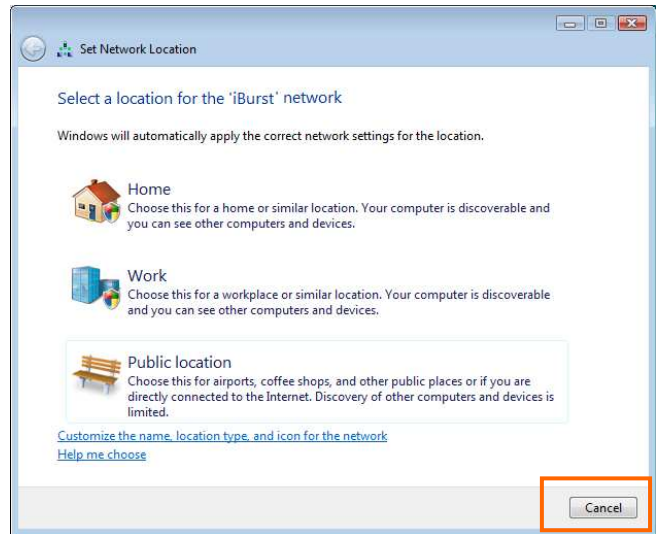
8. After connected, the dialog shows [Testing your Internet connection...] in several seconds.



9. When the dialog shows [You are connected to the Internet], click [Close] button. Of course you may choose [Browsing Internet] to open the Internet Explorer.

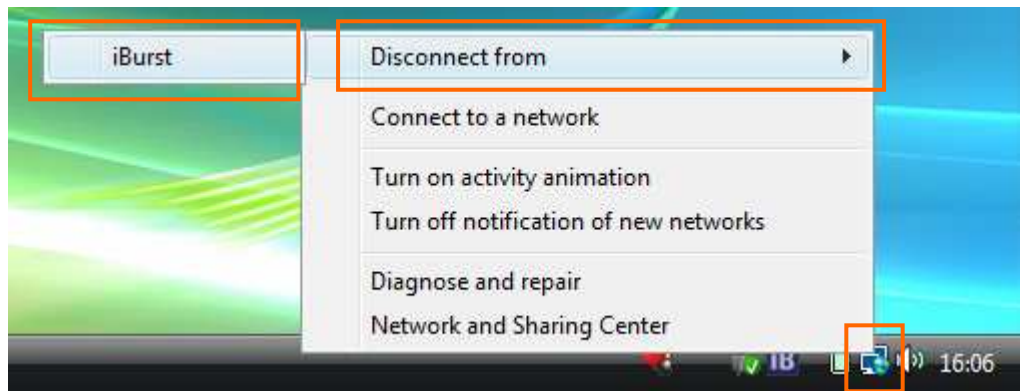


- When the dialog shows [Set a location for the '<the connection name>' network], click [Cancel] button. Of course you may choose a location among them.



To disconnect

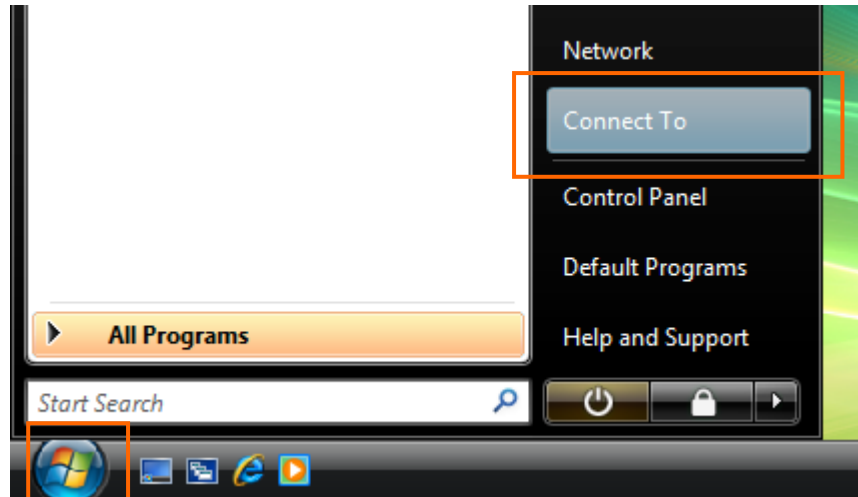
- Right click on the network icon at the task tray, select [Disconnect from] and click the appropriate connection name.



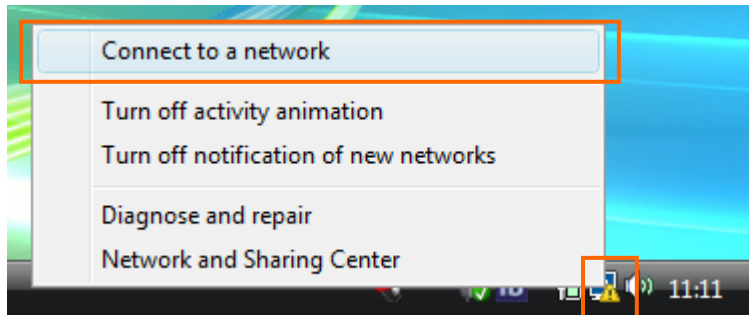
To connect again

This section shows the procedure to connect to the Internet again through iBurst. You have to do this every time before starting Internet accessing.

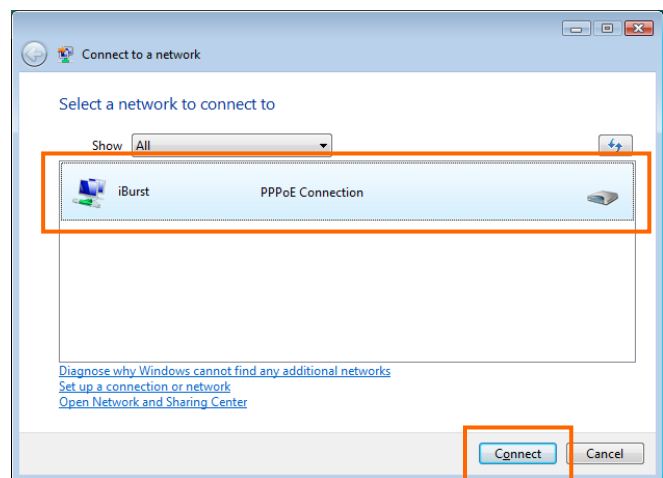
1. Click [Start] button and click [Connect To]; or



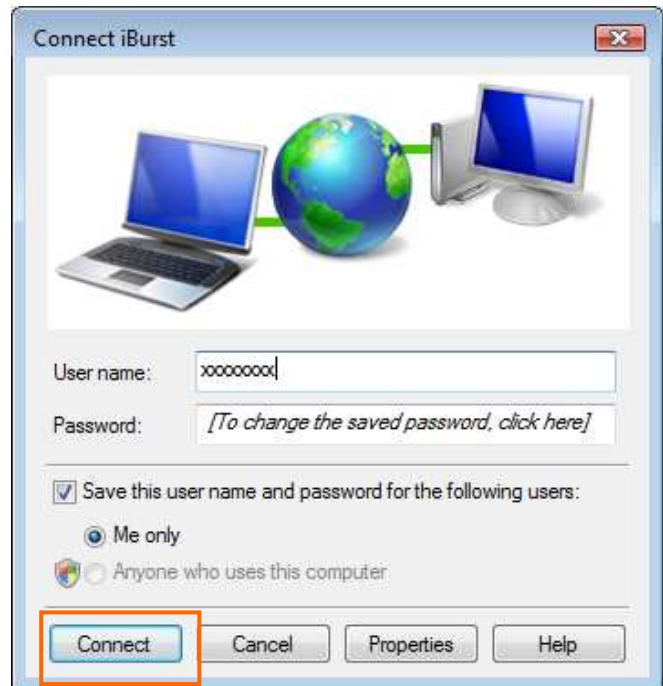
Right click on the network icon at the task tray and select [Connect to a network].



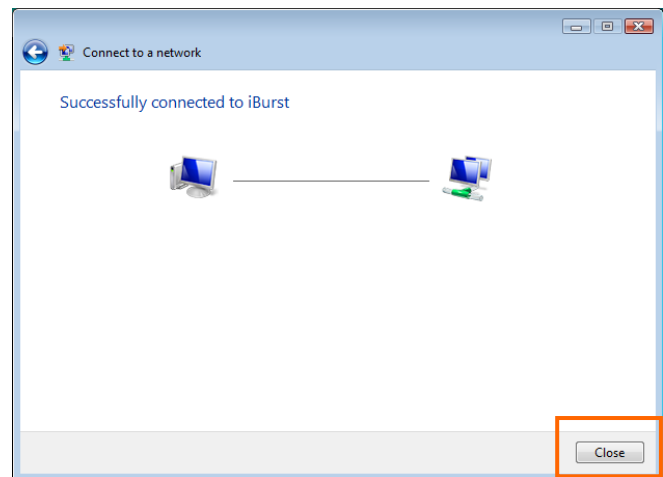
2. Choose the connection name for iBurst service and click [Connect].



3. When a dial-up connection dialog is popped up, fill items and click **[Connect]**.



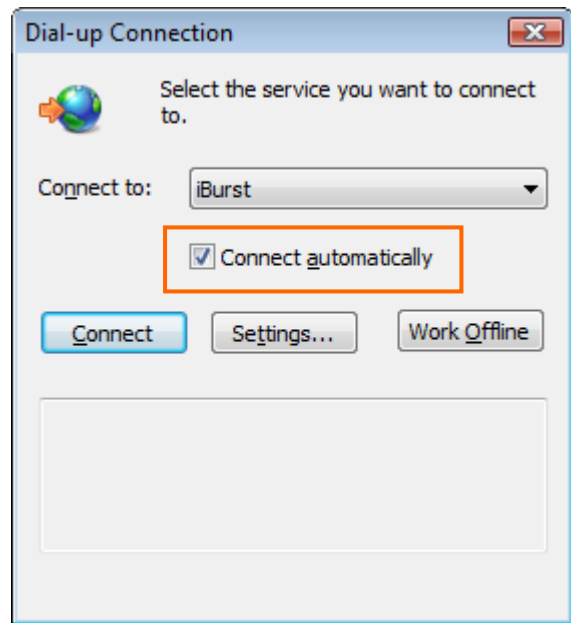
4. When connected successfully, click **[Close]**.



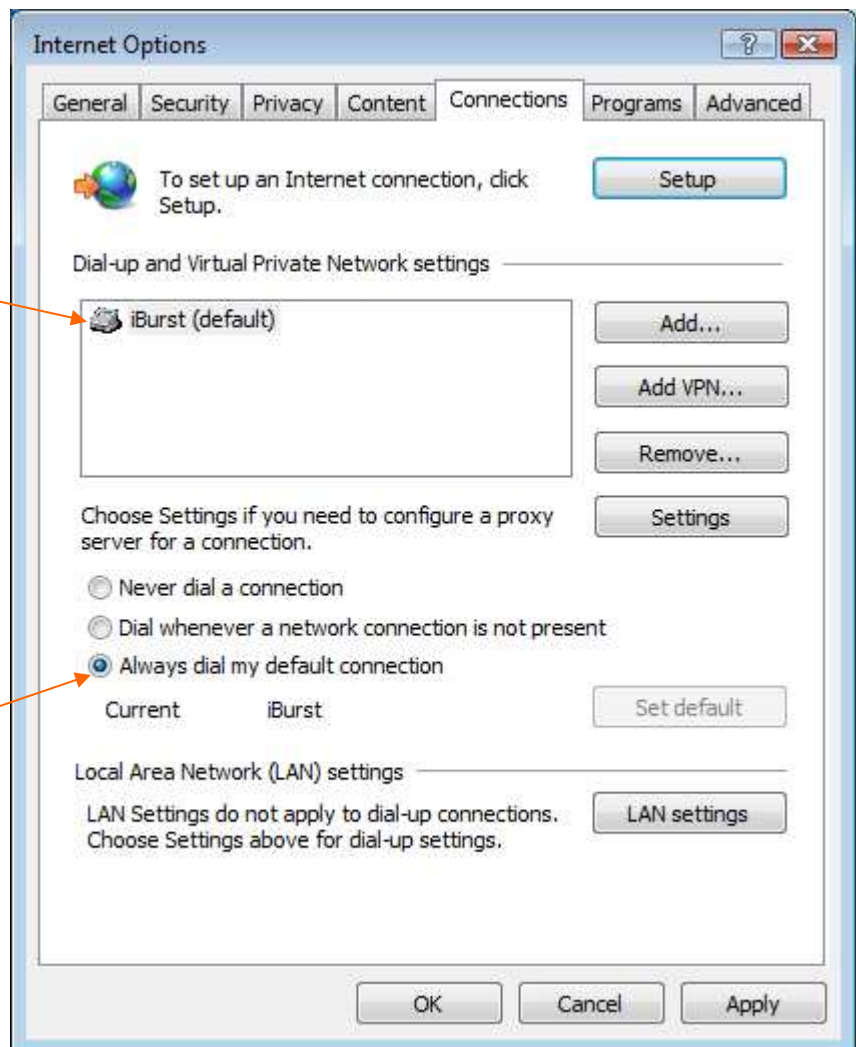
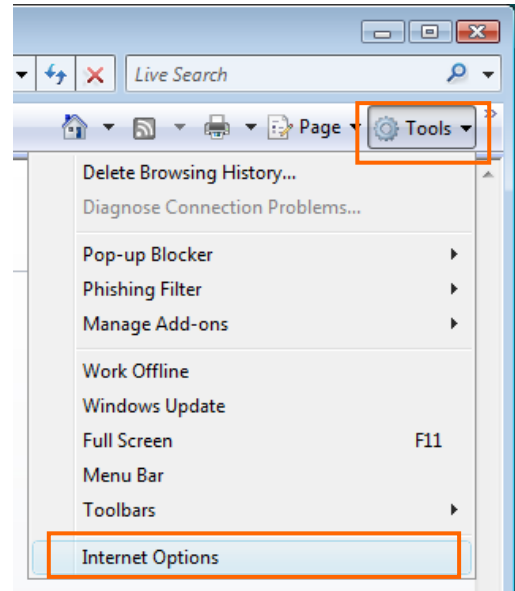
Tips for useful connection settings

When you open Internet Explorer, Windows Vista will attempt to make the Internet connectivity according to a particular setting in the Internet Explorer if not connected. The tips below will give you useful information.

1. When the dial-up connection dialog for iBurst service as shown below appears, it is recommended to enable **Connect automatically**. This will make Windows Vista to connect to the Internet without any your key action when Windows Vista needs the Internet connectivity.



- You can enable always connection on the [Internet Properties] as follows. In order to open the dialog, open the Internet Explorer, select [Tools] -> [Internet Options]. You can find the setting on [Connections] tab of the dialog.



The connection name of iBurst service must be the default connection.

Selecting "Always dial ..." is recommended

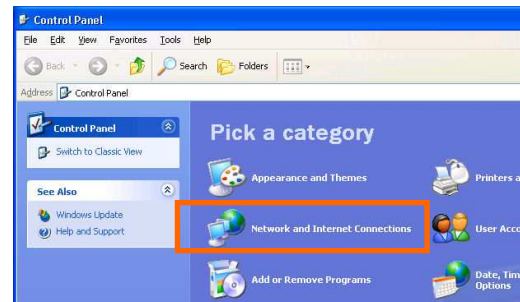
Connection Settings for Windows XP

Creating a connection

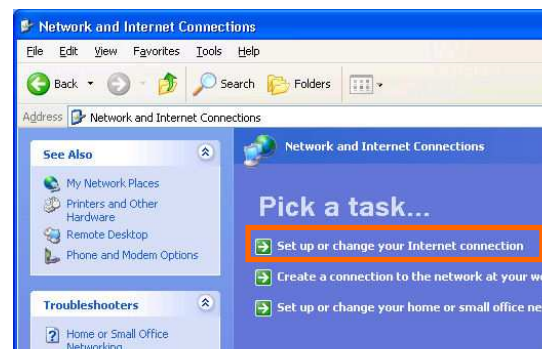
1. Make sure to plug the iBurst Terminal into your PC.
2. Click the [Start] button, and click [Control Panel] as shown below.



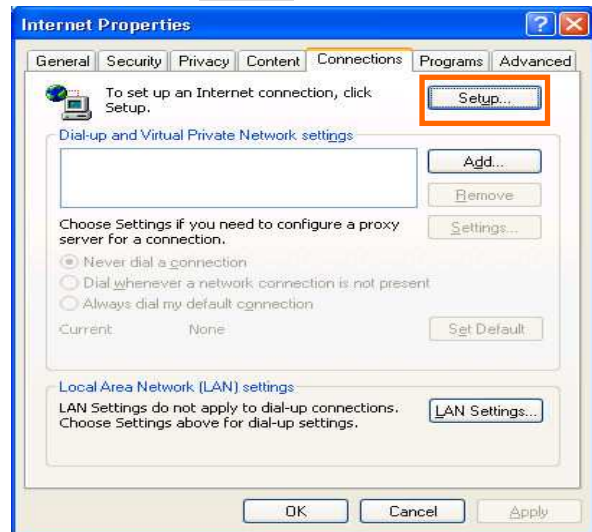
3. Click [Network and Internet Connections] in the [Control Panel] display.



4. Click [Set up or Change your Internet connection].



5. When the [Internet Properties] dialog window appears, click the [Setup] button.



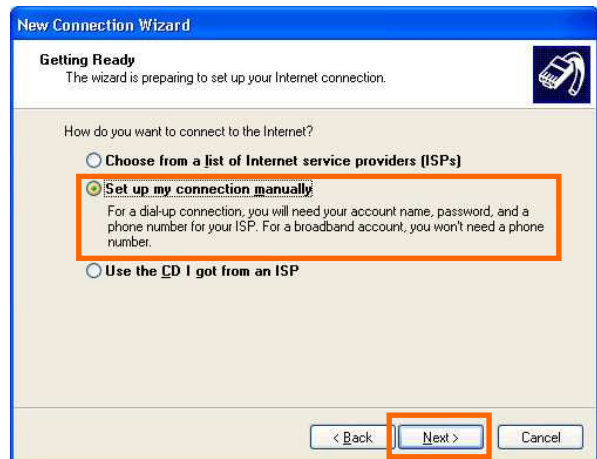
6. [New Connection Wizard] will begin and the dialog window as shown below will appear. Click the [Next >] button in the dialog window.



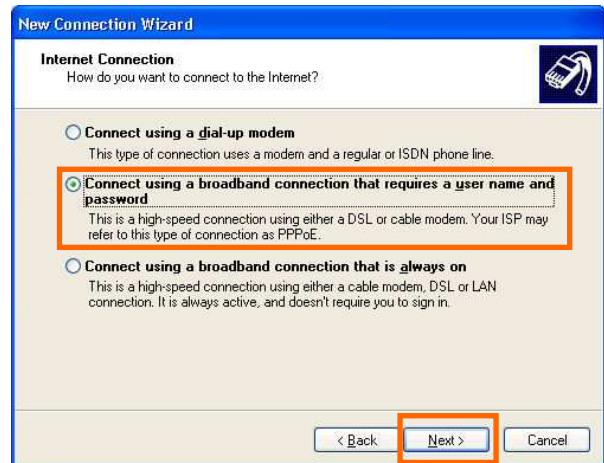
7. Select [Connect to the Internet] and click the [Next >] button.



8. Select [Set up my connection manually] and click the [Next >] button.



9. Select [Connect using a broadband connection that requires a user name and password] and click the [Next >] button.

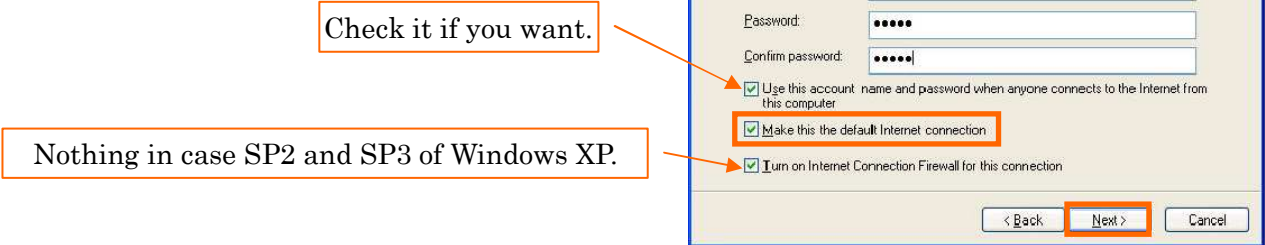


10. Fill in [ISP Name]. Any ISP name is acceptable. And then, click [Next >] button.

NOTE: "iBurst" in the picture below is an example.



- Enter user name and password and make sure that the [Make this the default Internet connection] check box is checked. Click the [Next >] button.



- Click the [Finish] button.



- Close [Network and Internet Connection] window.

To connect

This section shows the procedure to connect to the Internet through iBurst. You have to do this every time before starting Internet accessing.

1. Click [Start] button, [Connect To] and <Connection name you created>.

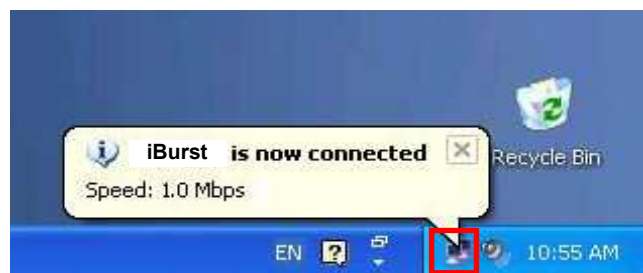
NOTE: The connection name “iBurst” in the picture below is an example.



2. When a dial-up connection dialog is popped up, fill items and click [Connect].



3. When the connection establishment process is complete, a message indicating completion of the connection will appear at the task tray as shown below.



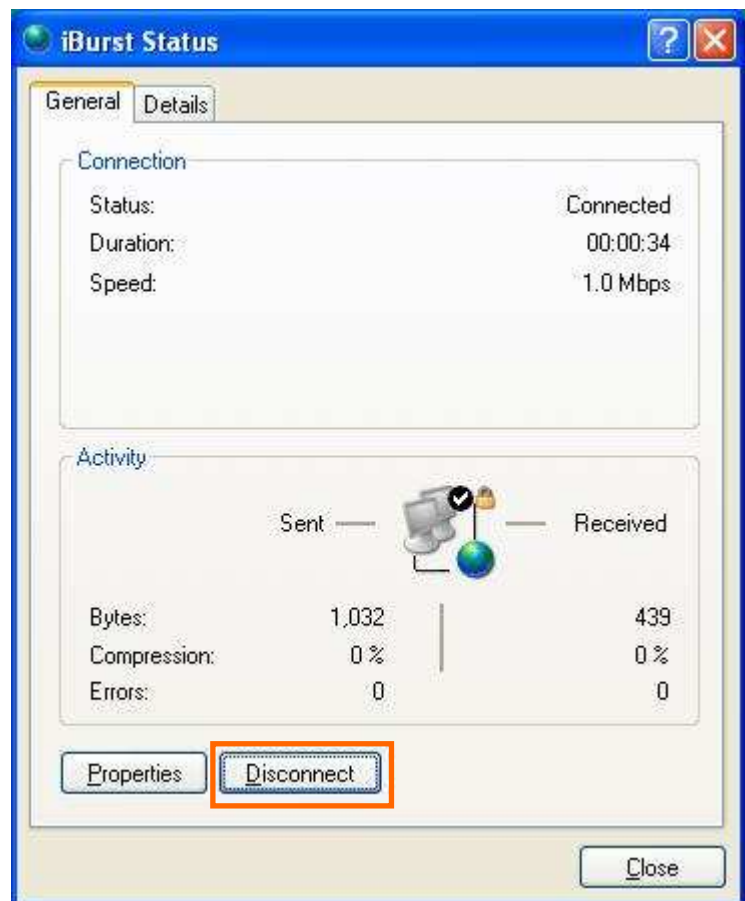
To disconnect

1. Click [Start] button, [Connect To] and <Connection name you created>.

NOTE: The connection name “iBurst” in the picture below is an example.



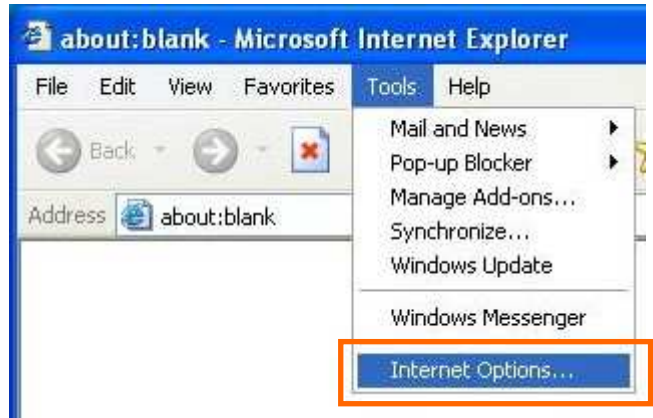
2. When a connection status dialog is popped up, click [Disconnect].



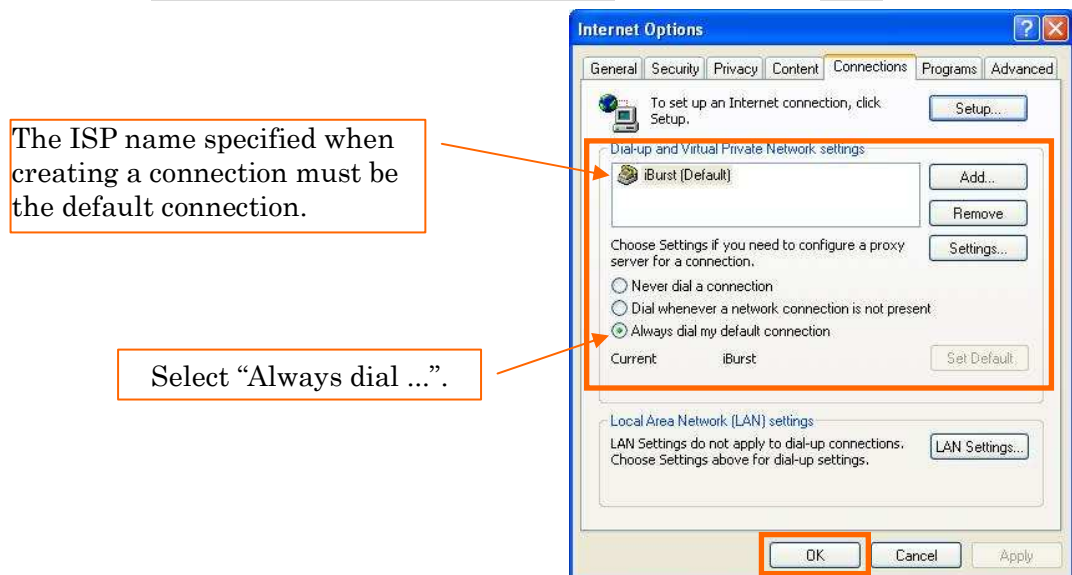
3. It will be disconnected.

Tips for useful connection settings

1. You can enable always connection on the [Internet Properties] as follows. In order to open the dialog, open the Internet Explorer, select [Tools] -> [Internet Options]. You can find the setting on [Connections] tab of the dialog.



2. When the [Internet Options] dialog window appears, select [Connections] tab. Confirm the connection name, select [Always dial my default connection], and then click [OK].



3. When you open Internet Explorer, the **[Dial-up Connection]** dialog as shown below will appear. Click the **[Connect]** button to connect to the network.

NOTE:

If you don't choose "Always dial my default connection" at step 2 above, you have to open this dial-up connection dialog manually every when you want to connect to the Internet.




Chapter 3

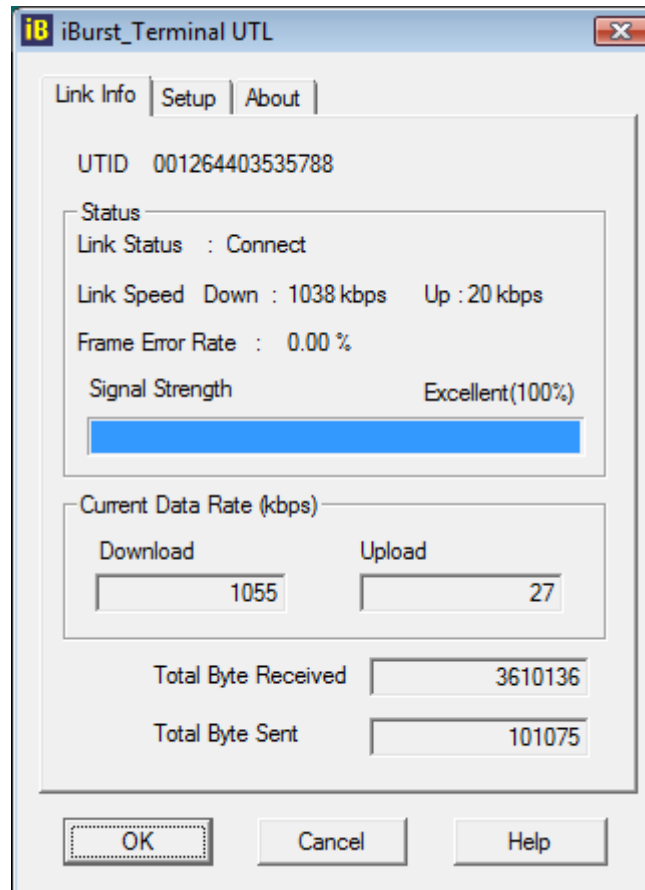
Utility Software

This chapter describes the features and usage of the Utility Software for iBurst Terminal.

Utility Software on Windows

To open the utility dialog.

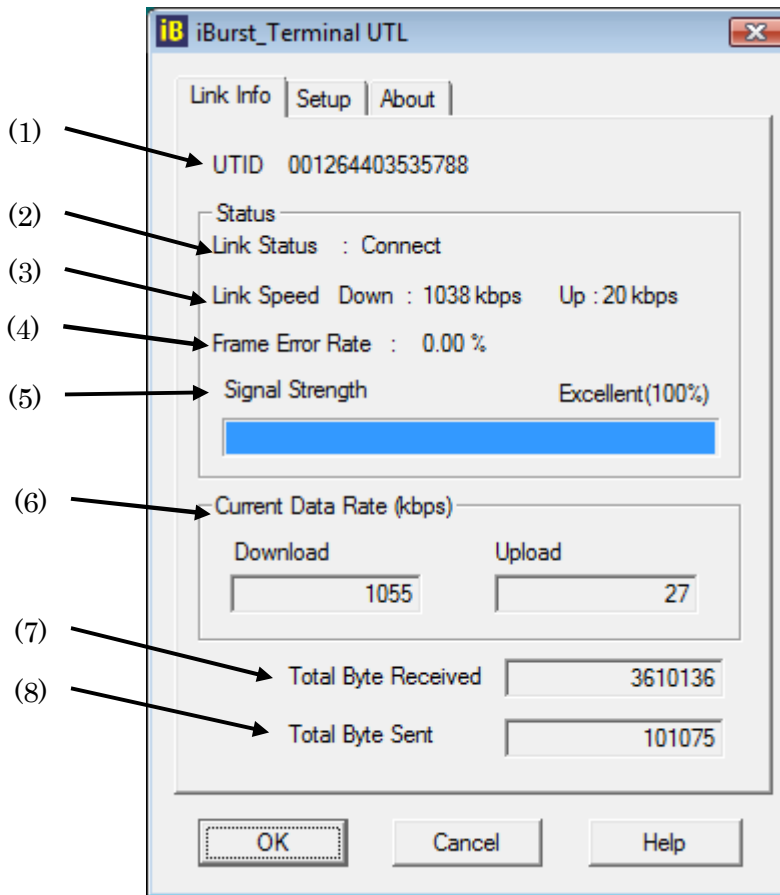
1. To open the utility dialog, double click the  icon on the computer's task tray; or click [Start] -> [All Programs] -> [iBurst Terminal] -> [iBurst_Terminal UTL]. When the dialog opens, the [Link Info] pane will be displayed as shown below.



2. To close the utility dialog window, click the [OK] button, the [Cancel] button or the 'X' button at upper-right corner of the dialog window.

Link Info Pane

[Link Info] pane indicates several communication statuses about iBurst Terminal.



The following descriptions are about each item on the pane.

(1) UTID

UTID is an identifier assigned to the iBurst Terminal. This will be used for maintenance support.

(2) Link Status

This indicates current link status between the iBurst Terminal and the access point.

Connect : The link is connected.

No Connect : The iBurst Terminal is connected with your PC but the link is not connected.

No iBurst_Terminal : There is no iBurst Terminal connected with your PC.

(3) Link Speed

This indicates current bandwidth allocated automatically between the iBurst Terminal and a radio base station.

(4) Frame Error Rate

This indicates current Frame Error Rate on the downlink air.

(5) Signal Strength

This indicates current signal strength of the received radio signal. The signal bar indicates the level visually in percentage and the status words are categorized according to the percent level as follows.

No Signal :	0%
Poor :	In the range of 1 to 24%
Fair :	In the range of 25 to 49%
Good :	In the range of 50 to 74%
Excellent :	In the range of 75 to 100%

(6) Current Data Rate

This indicates current throughputs on both directions.

(7) Total Byte Received

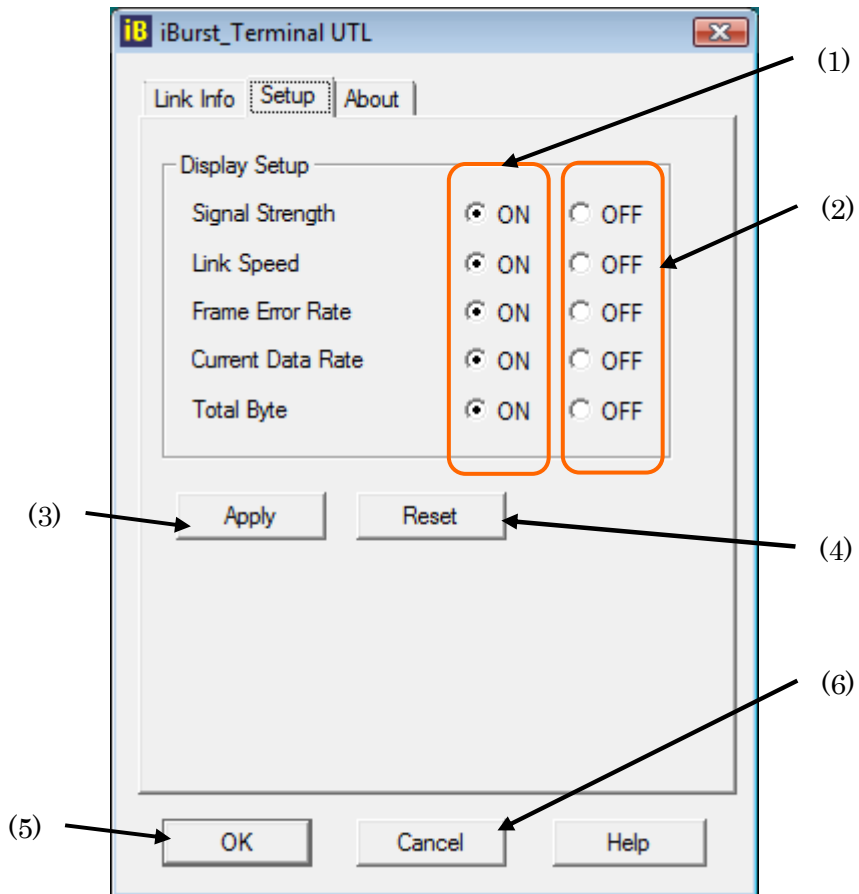
Total Byte Received indicates the total number of bytes received from the access point since the communication link is established.

(8) Total Byte Sent

Total Byte Sent indicates the total number of bytes transmitted to the access point since the communication link is established.

Setup Pane

[Setup] pane can be displayed in the main dialog window by clicking the [Setup] tab. This pane controls enabling/disabling to show each indicator on the [Link Info] pane.

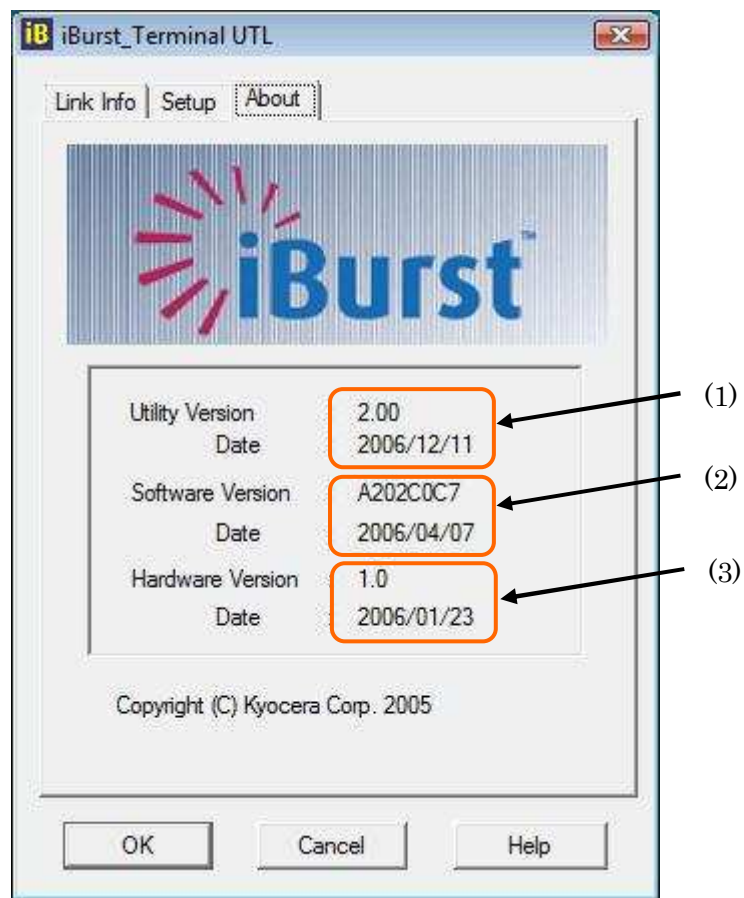


The following descriptions are about each item on the pane.

- (1) Selecting [ON] enables the corresponding indicator on the Link Info pane. All are [ON] as the default.
- (2) Selecting [OFF] disables the corresponding indicator on the Link Info pane.
- (3) [Apply] button activates every setting above.
- (4) [Reset] button enables and activates all settings above.
- (5) [OK] button activates every setting above and close the dialog.
- (6) [Cancel] button closes the dialog without activation of the settings.

About Pane

[About] pane shows the version information about software, hardware and copyrights.








The following descriptions are about each item on the pane.

- (1) This shows the version number and the build date of this Utility Software.
- (2) This shows the firmware version and the build date of it.
- (3) This shows the hardware version and the manufactured date of the iBurst Terminal.

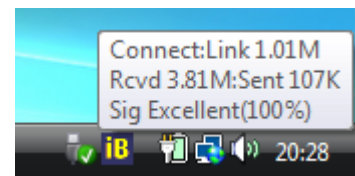
Icon Display in task tray

When the Utility Software for iBurst Terminal is running, an icon of the Utility Software will be displayed in the task tray of the computer monitor according to communication status of the iBurst Terminal.

The table below shows icons with status descriptions.

Icon	Status of iBurst Terminal
	iBurst Terminal is not plugged into your PC.
	There is no transmission nor reception on iBurst Terminal.
	iBurst Terminal is transmitting data.
	iBurst Terminal is receiving data.
	iBurst Terminal is both transmitting and receiving data.

Pointing on the iBurst icon on the task tray, a balloon indicates **Link Status, Total Byte Received, Total Byte Sent** and **Signal Strength** as shown below, but depending on the settings on the [Setup] pane.



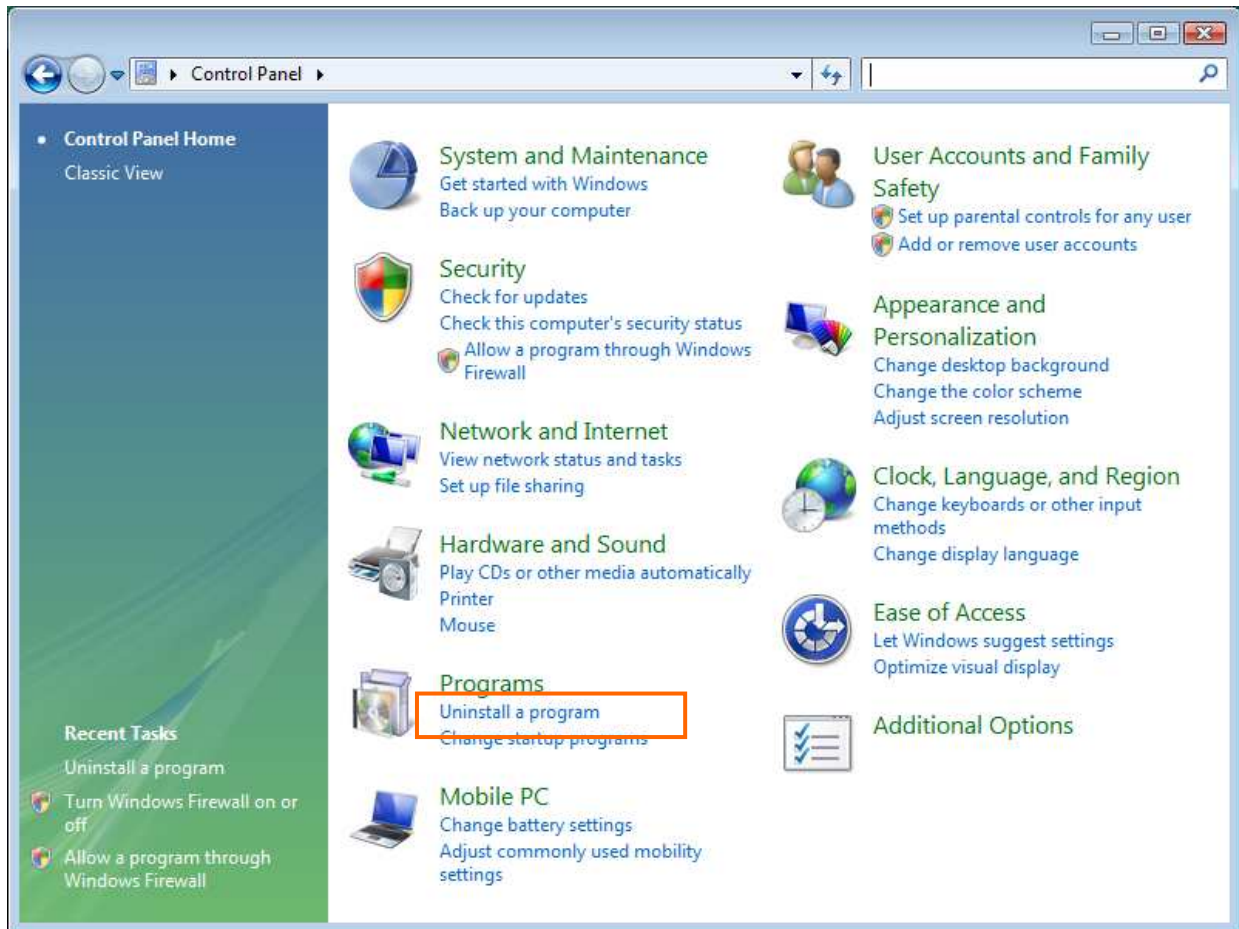
Chapter 4

Uninstallation

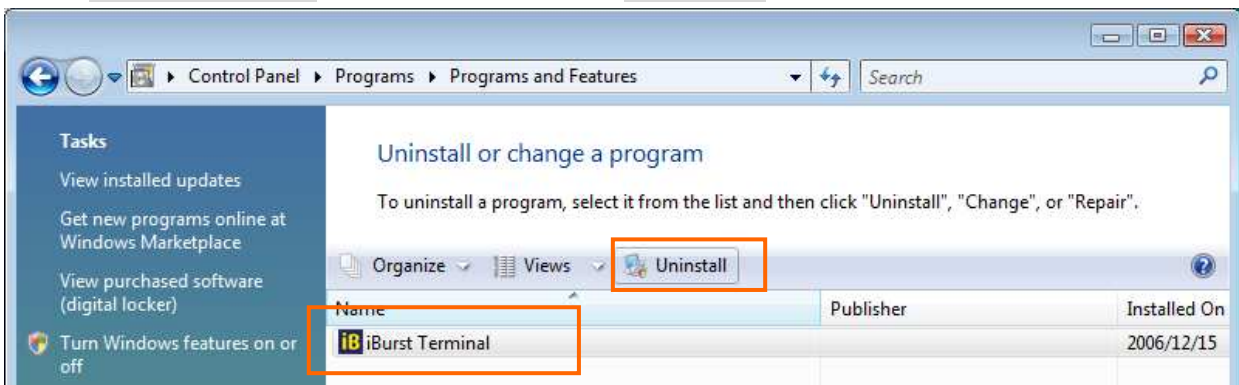
This chapter describes how to uninstall iBurst software.

Uninstallation for Windows Vista

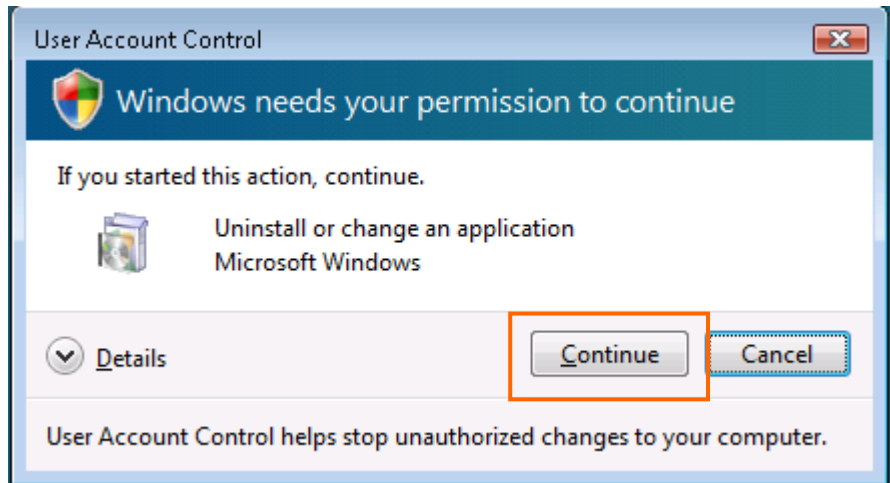
1. Close all programs currently running.
2. Remove the iBurst Terminal from your PC.
3. Click [Start] -> [Control Panel] to open the Control Panel, and then click [Uninstall a program] beside the [Programs] icon.



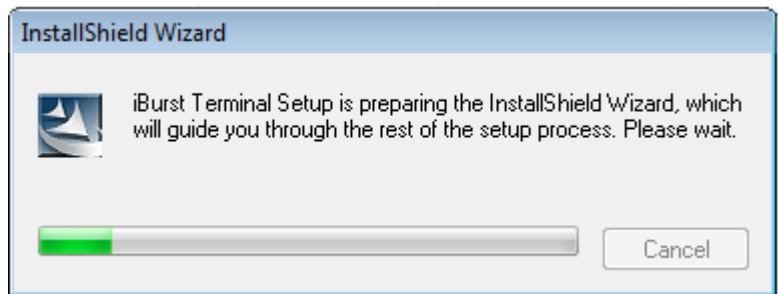
4. Select [iBurst Terminal] software, and click the [Uninstall] button.



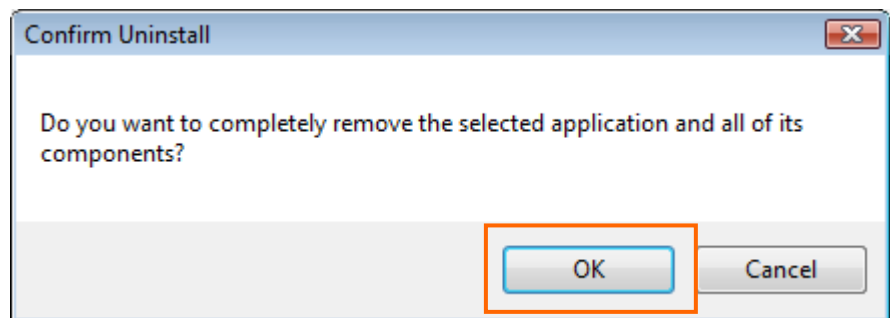
- When Windows prompts [User Account Control], click [Continue] to proceed uninstalling.



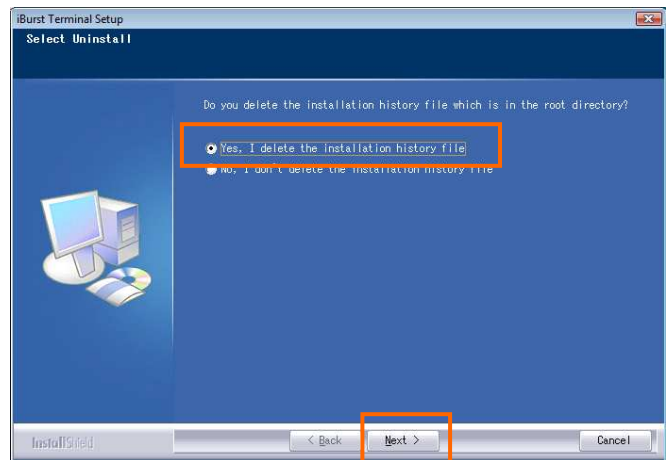
- The software will show progress of preparation.



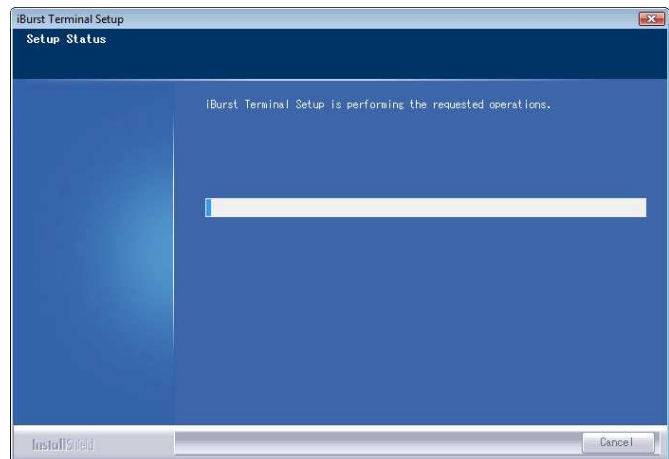
- Click the [OK] button after appearing dialog window as shown below.



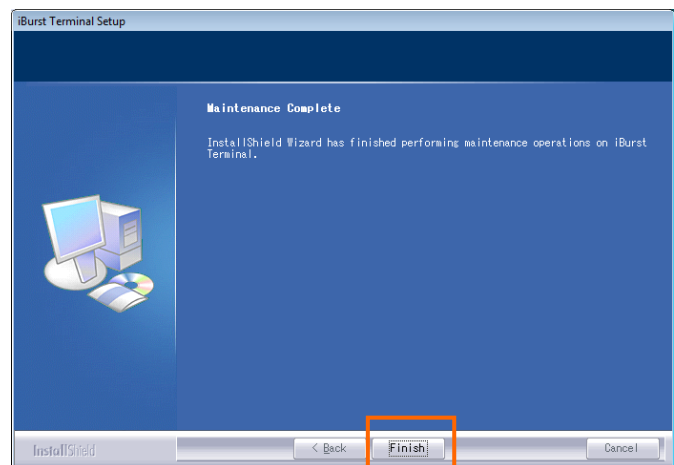
- The following dialog window will appear, and select to delete or not to delete installation history files before uninstallation, then click the [Next >] button. Selecting “Yes” is recommended.



- The following dialog window will appear, and uninstallation of software begins.

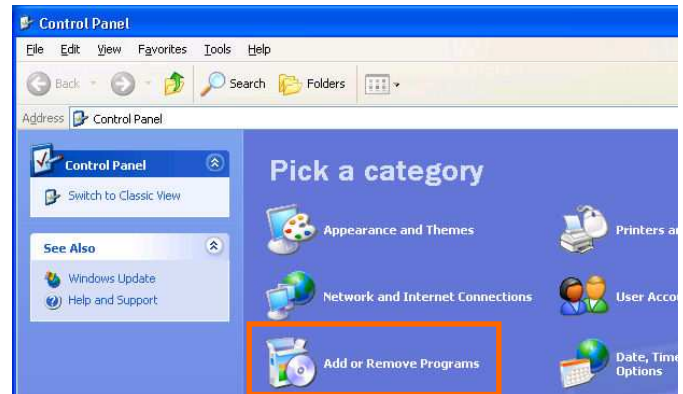


- Click the [Finish] button after appearing dialog window as shown below.

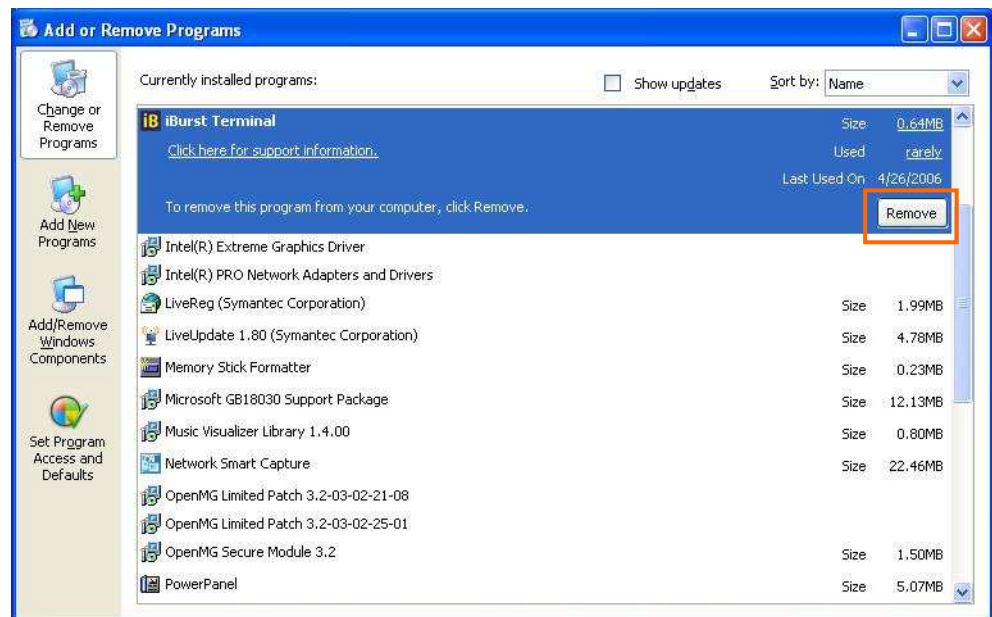


Uninstallation for Windows XP

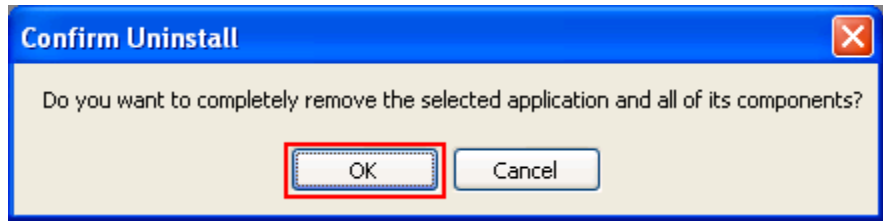
1. Close all programs that are currently running.
2. Disconnect the iBurst Terminal from your PC.
3. Click the [Start] button, and click [Control Panel] to open Control Panel, and then double click [Add or Remove Programs].



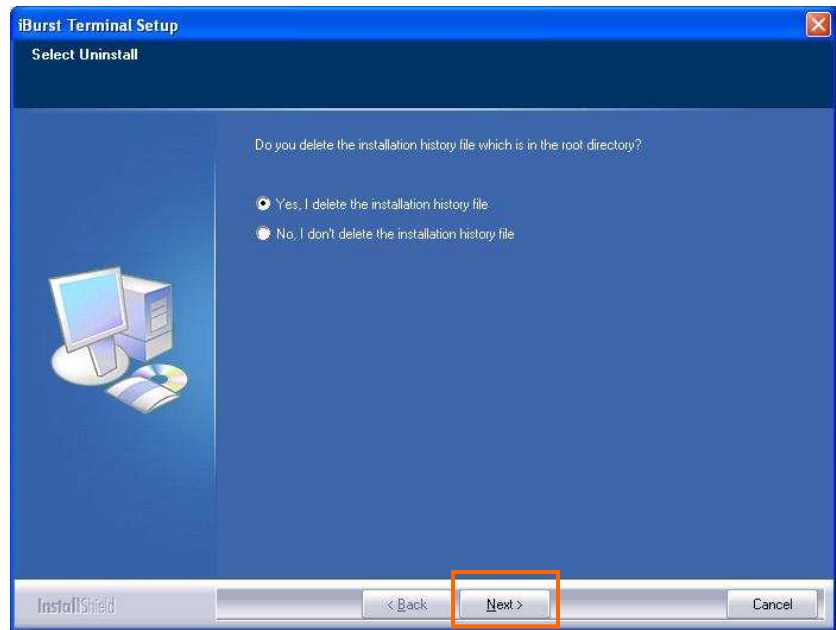
4. Select [iBurst Terminal] software, and click the [Remove] button.



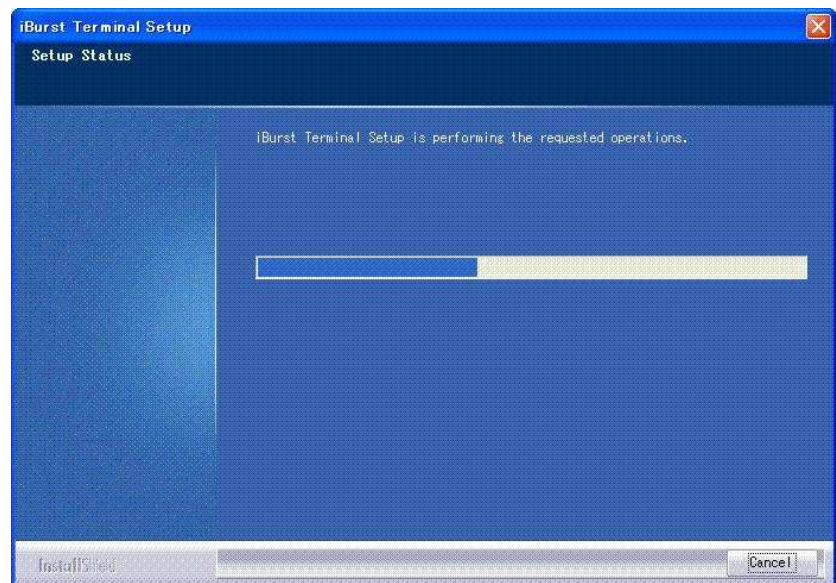
- Click the **[OK]** button after appearing dialog window as shown below.



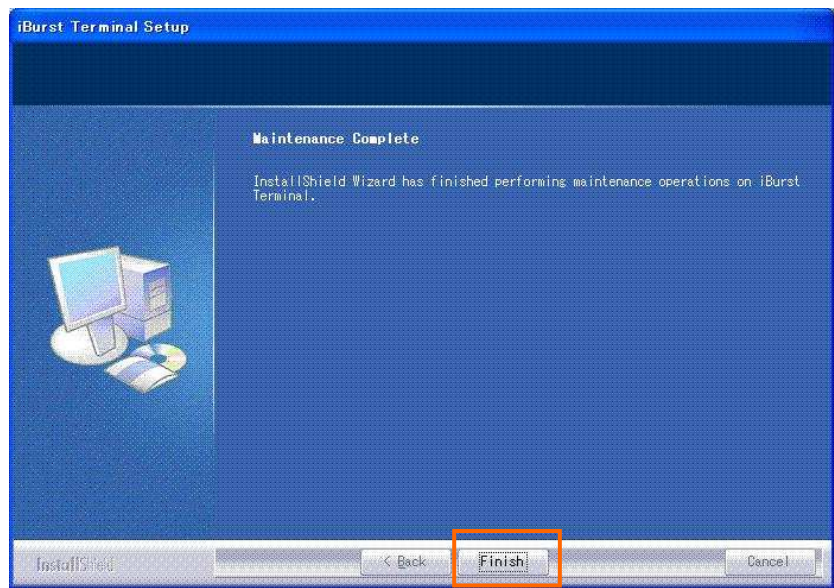
- The following dialog window will appear, and select to delete or not to delete installation history files before uninstallation, then click the **[Next >]** button. Selecting "Yes" is recommended.



- The following dialog window will appear, and uninstallation of software begins.



8. Click the **Finish** button after appearing dialog window as shown below.



Appendix

Utility software will be not uninstalled when back-to-date on Windows Vista

If you uninstall the latest iBurst Terminal software by executing the old software package on Windows Vista and you restart the PC, you will find a warning pop-up message “Help path isn’t found.” and will find the utility software on the task tray against UNINSTALLING.

To clear this situation, please install the latest one again and uninstall it following the standard procedure from “Add/Remove Programs” on “Control Panel” shown in this manual.

Trouble when disabling a built-in wireless LAN device on Windows PC

On some particular models of Windows PC, disabling a built-in wireless LAN device on “Device Manager” will make a trouble that the PC doesn’t recognize iBurst User Terminals, not only iBurst devices, when attaching or removing it. Since such PC shall have a wireless LAN utility to control and monitor wireless LAN devices, please turn the wireless LAN device off by utilizing the utility to avoid such trouble if you want to disable it.

FCC Compliance Statement

This device complies with Part 15 of the FCC Rules. Operation is subject to the following two conditions: (1) this device may not cause harmful interference, and (2) this device must accept any interference received, including interference that may cause undesired operation.

FCC WARNING

Changes or modifications not expressly approved by the party responsible for compliance could void the user’s authority to operate the equipment.

NOTICE

This equipment has been tested and found to comply with the limits for a Class B digital device, pursuant to part 15 of the FCC rules. These limits are designed to provide reasonable protection against harmful interference in a residential installation. This equipment generates, uses and can radiate radio frequency energy and, if not installed and used in accordance with the instructions, may cause harmful interference to radio communications. However, there is no guarantee that interference will not occur in a particular installation. If this equipment does cause harmful interference to radio or television reception, which can be determined by turning the equipment off and on, the user is encouraged to try to correct the interference by one or more of the following measures:

- Reorient or relocate the receiving antenna.
- Increase the separation between the equipment and receiver.
- Connect the equipment into an outlet on a circuit different from that to which the receiver is connected.
- Consult the dealer or an experienced radio/TV technician for help.

CAUTION

This equipment has been tested for compliance with FCC RF exposure limits in the laptop computer(s) configurations with a USB port and can be used in laptop computers with substantially similar physical dimensions, construction, and electrical and RF characteristics. And also this equipment has been tested with original antenna.

Note

If this equipment is intended for use in any other portable device, you are responsible for separate approval to satisfy the SAR requirements of Part 2.1093 of FCC rules.

FCC RF Radiation Exposure Statement

This transmitter must not be co-located or operated in conjunction with any other antenna or transmitter.

The available scientific evidence does not show that any health problems are associated with using low power wireless devices. There is no proof, however, that these low power wireless devices are absolutely safe. Low power Wireless devices emit low levels of radio frequency energy (RF) in the microwave range while being used. Whereas high levels of RF can produce health effects (by heating tissue), exposure to low-level RF that does not produce heating effects causes no known adverse health effects. Many studies of low-level RF exposures have not found any biological effects. Some studies have suggested that some biological effects might occur, but such findings have not been confirmed by additional research. UTU03-1890F-US-A has been tested and found to comply with FCC radiation exposure limits set forth for an uncontrolled equipment and meets the FCC radio frequency (RF) Exposure Guidelines in Supplement C to OET65.

[The end of this manual]